

# OIL FILLED RADIATOR SA 7015

# GLEN

Live Better !



**SAFETY**  
IS:4250



CM/L 9512428622

## MADE IN INDIA

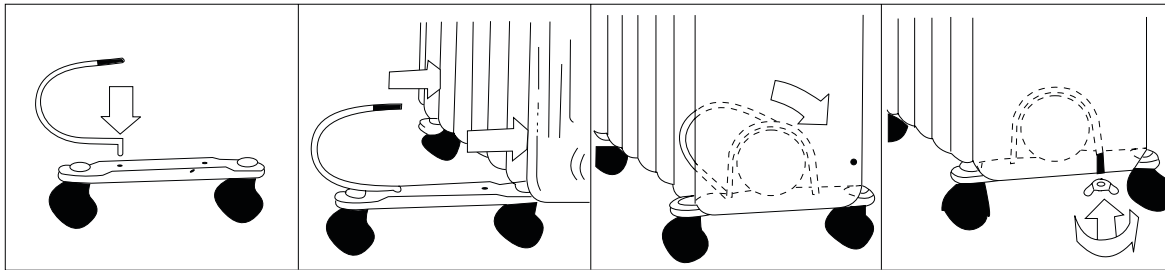
### USER'S GUIDE

## IDENTIFYING YOUR OIL FILLED RADIATOR SA 7015



## USING YOUR OIL FILLED RADIATOR

Remove the heater and all the accessories from the carton. The Oil filled heater is packed with the castor wheels unattached. Attach the wheels before operating as explained below:



### Assembly

- Place the heater body upside-down on a scratch-free location, make sure it is stable and will not fall.
- Screw off the wing nuts from the u-shaped bolt provided. Attach the u-shaped bolt to the flange between first and second fins (near the front cover).
- To attach the castor mounting plate to the heater body, insert the threaded ends of the u bolt in the holes on the castor mounting plate.
- Screw the wing nuts back to the u bolt and fasten the wing nut properly. Do not over tighten, this may damage the radiator flange.
- The rear flange must be mounted between the end two fins.

### Caution:

Do not operate without wheels attached. Operate the Oil Filled radiator only in up right position, (wheels on the bottom, controls on the top), any other position could create a hazardous situation.

## Usage

Place the radiator on the floor at least 90 cm away from the wall and any other objects such as furniture, curtains or plants. (Make sure the power supply used corresponds to the one on the rating label). With the thermostat control switch in the “O” position and the power setting switch in the “OFF” position; plug the radiator into the mains power supply.

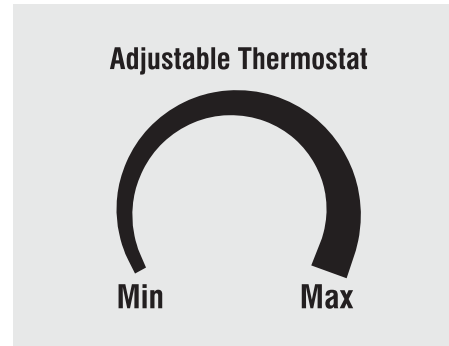
## Power

Switch the radiator to the desired power setting. The power switch lights up when activated.

## Controls

This appliance can be operated by the manual controls located on the side of the radiator:

- “I” ---- Low heating
- “II” ---- Medium heating
- “III”=I+II ---- Maximum heating
- “III ↗” ---- Maximum heating + FAN ↗: ONLY FAN



Thermostat control: Turn the thermostat switch clockwise or anti-clockwise to set the desired temperature you require. The thermostat will attempt to keep the room temperature at the desired level automatically. Turn the thermostat clockwise to the maximum position. Once the desired room temperature is reached, turn the thermostat anti-clockwise until the heater switches off. The heater will switch on and off automatically to maintain the desired temperature.

## Cleaning

Always disconnect the radiator from the mains supply before cleaning. Clean the outside of the heater with a damp cloth. DO NOT use waxes or polishes as these may react with the heater and cause discolouration.

## Storage

Save the box for off season storage. Clean the heater following the cleaning instructions above. Remove the wheel base assemblies. Place the radiator, and wheel assemblies in the original box, and store in a cool and dry place. If you choose to store your heater fully assembled be sure to cover it to protect it from dust.

## SAFETY PRECAUTIONS

- Always disconnect the heater from the mains supply when not in use and when cleaning.
- Do not leave the heater “ON” unattended.
- Never cover the heater as this may lead to risk of fire.
- Keep the radiator at distance of at least 90 cm from any combustible material, such as furniture, curtains, bedding clothes or papers.
- Do not attempt to open any part of the oil fins.
- Keep the radiator clean. Do not allow objects to enter the ventilation, as this may cause electric shock, fire or damage the heater.
- Close supervision is required when any appliance is used near or by children.
- Never allow the cord to touch wet or hot surfaces, become twisted or be within the reach of children.
- Do not use outdoors.
- Do not place on or near a hot gas or electric burner.
- Never use the appliance with a damaged cord or plug or after the appliance has malfunctioned or been damaged in any way.
- Never attempt to open any part or dismantle the controls. Responsibility for failure cannot be accepted if these instructions have been ignored.
- Do not use the appliance for anything other than its intended use.
- This appliance is intended for household use only.
- The appliance is not intended for use by young children or infirm persons without supervision.
- Do not use this radiator in the immediate surroundings of a bath, a shower or a swimming pool.
- This radiator is filled with a precise quantity of special oil. Repairs requiring opening of the oil container are only to be made by the manufacturer or his service agent who should be contacted if there is an oil leakage. Regulations concerning the disposal of the oil when scrapping the appliance has to be followed.

## WARRANTY

This GLEN OIL FILLED RADIATOR SA 7015 is fully warranted against any defect arising out of defective materials or faulty workmanship for a period of two years from the date of purchase. Should any defect develop in this product, the customer should bring the product to the nearest authorised service centre, where the company undertakes to get the product repaired free of charge.

**This warranty is not valid if :**

- The use and care instructions have not been followed.
- Defects are caused by accident, misuse, abuse or commercial use.
- The repair work is carried out by persons not authorised by the company.
- Any modification or alteration of any nature is made in the product.
- Normal wear & tear of the product is not covered under warranty
- The Bill/Cash memo and copy of warranty card is not presented.

Under no circumstances, whether based on limited warranty or otherwise shall the company be liable for incidental, special or consequential damages. Use of product indicates acceptance by you of the aforesaid terms and conditions.

PRODUCT NAME : GLEN OIL FILLED RADIATOR SA 7015  
SERIAL NO. : .....  
DATE OF PURCHASE : .....

**SPECIFICATIONS**

Model	Voltage and Frequency	Power	Class
SA 7015 9 Fins	220-240 V~, 50/60Hz	2000 + 400 (Fan) W	I
SA 7015 11 Fins	220-240 V~, 50/60Hz	2500 + 400 (Fan) W	I
SA 7015 13 Fins	220-240 V~, 50/60Hz	2500 + 400 (Fan) W	I

DEALER'S STAMP & SIGNATURE

Manufactured & Marketed by : **Glen Appliances Pvt. Ltd.**  
Plot No. 919, Sector 68, IMT, Faridabad, Haryana 121004  
**Head Office/In case of customer complaints :Contact Manager - Customer Support**  
I-34, DLF Industrial Area, Phase 1, Faridabad (Haryana), INDIA.  
**Helpline : 9266655555 Email : info@glenindia.com Website : www.glenindia.com**