

Dodge Dart 2013-2016

(sku 3-847DG003)

These installations show the left door (driver side) deflectors being installed. The same procedure applies to installing the right door (passenger side) deflectors. Be careful not to damage the paint finish and glass run channels/weather-strips when installing the deflectors.

Adhesive strength is determined by the adhesive viscosity and resin softness. The lower the atmospheric temperature, the lower the adhesive viscosity and weaker the adhesive strength. For this reason, installation is best when the ambient air temperature is 60F or above.

Important: If dirt, dust, or oil are present on the surface of the window frame for installation, the adhesive strength of the 3M tape will be diminished. For best result, thoroughly clean the surface of the window/door frame where deflector will be attached using cleaning pad and rag. Do not touch the 3M tape surface with hands. This will cause oil from the skin to be transferred to the 3M tape, diminishing the adhesive strength of the tape.



Step 1

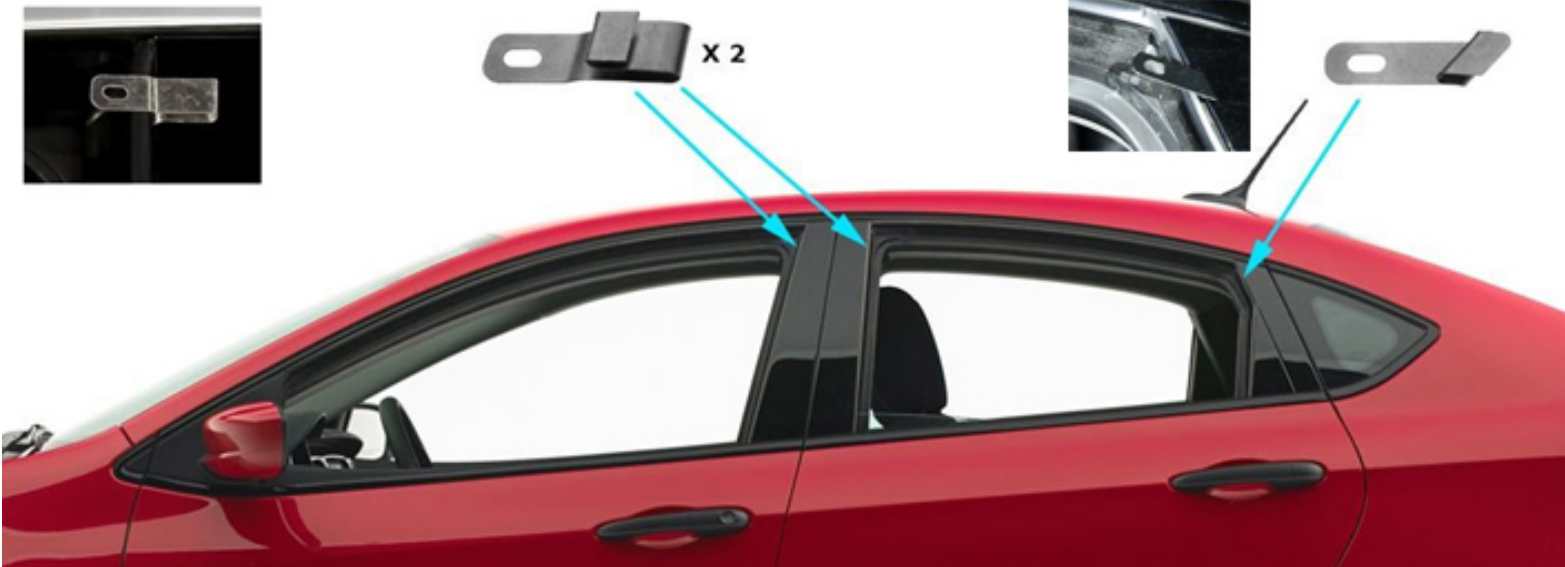
Fully open the front window to allow more space to work around the window frame. Thoroughly clean the surface of the window/door frame where deflector will be attached using cleaning pad and rag.

Step 2

Hold the deflector up the window frame to ensure proper fitment and to get an idea on where to insert the mounting brackets.

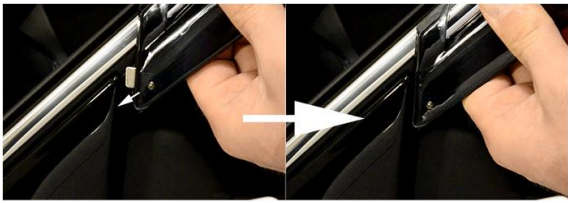
Step 3

Insert the mounting bracket between the door sash and the rubber glass channel run. See image below for bracket locations. After insertion of the brackets, raise and lower the window several times to seat the door glass run channel.



Step 4

Peel off the side adhesive backing, and peel back 1 1/2 to 2 inches of each end of the top adhesive backing.



Step 5

Insert front bracket on the left front door visor behind the door mirror base. (DO NOT insert the bracket into window channel) Several models require the front bracket to hook onto the front edge of the door frame. See left image for examples.



Step 6

LIGHTLY tape front end and rear end of visor onto door frame, and adjust the visor/mounting brackets so the holes are lined up.

Step 7

Use locking pins as illustrated in left image to secure deflector.

Step 8

After all the locking pins are installed, apply light pressure against the front door deflector. Carefully remove the adhesive backings and apply pressure to the adhesive area. While peeling the backings, grab the tape as close to the visor as possible and pull slowly to avoid tearing the tape.



Step 9

Press down evenly on the visor where the double-sided adhesive tapes are attached.

Step 10

Raise and lower the window several times to see if window can be closed properly.

Step 11

Check visor from above and below to make sure adhesive tape is fully contacted with door sash (no gap between adhesive and door sash. **TIPS: check for light leak**). If visor is not fully contacted with door frame, apply pressure on the edge of the visor to ensure adhesive is fully contact with door frame.

Step 12

Use the same procedure to install the rear visor.

Visit our youtube channel for visual installation guide <https://www.youtube.com/user/wellvisors>
Contact us wellvisors@gmail.com | Tel. 1-844-WVISORS (984-7677)