



Model No:  
GM2001

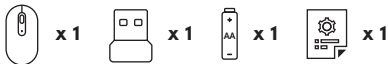
# User Guide

Wireless mouse

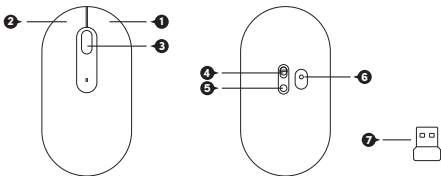


Version 1.00  
(English | Indonesian)

## 1 Package Contents | Isi Kemasan



## 2 Overview | Penjelasan



**EN**

1. Right Button

2. Left Button

3. Scroll Wheel  
(Middle Button)

4. On/Off Button

5. DPI Button

6. Optical LED

7. USB Receiver  
(stored under  
mouse cover)

**ID**

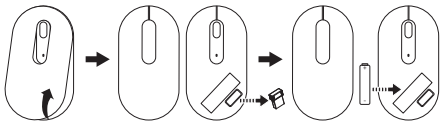
1. Tombol Kanan
2. Tombol Kiri
3. Roda Scroll  
(Tombol Tengah)
4. Tombol On/Off
5. Tombol DPI
6. Optical LED
7. USB Receiver  
(disimpan di bawah penutup mouse)

### 3 Using The Device | Menggunakan Perangkat

**EN**

#### 3.1 Install Battery and Remove USB Receiver

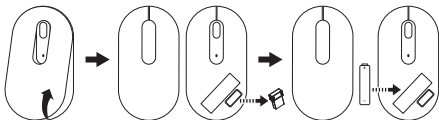
- a. Lift up the mouse cover
- b. Take out the USB receiver
- c. Insert the included AA battery into the battery compartment. Make sure the battery orientation matches the "+" and "-" symbols in the compartment
- d. Place the mouse cover back to its original position

**Tips:**

- i) Store the USB receiver in the mouse when it is not in use
- ii) Plastic cover / paper strip (if any) needs to be removed for completing the circuit

### **ID** 3.1 Memasang Baterai dan Keluarkan USB Receiver

- Angkat penutup mouse
- Keluarkan USB receiver
- Masukkan baterai AA yang disertakan ke dalam kompartemen baterai. Pastikan orientasi baterai cocok dengan simbol "+" dan "-" pada kompartemen
- Tempatkan penutup mouse kembali ke posisi semula



#### **Tips:**

- Simpan USB receiver di dalam mouse jika tidak digunakan
- Penutup plastik / strip kertas (jika ada) harus dilepaskan untuk menyelesaikan sirkuit

### **EN** 3.2 Connect Mouse to Computer

- Plug the USB receiver into a USB port of the computer
- The computer automatically detects the mouse and you can begin using it. If no response, please plug the USB receiver to another USB port of the computer

### **ID** 3.2 Hubungkan Mouse ke Komputer

- Masukkan USB receiver ke port USB komputer
- Komputer secara otomatis mendeteksi mouse dan Anda dapat menggunakannya. Jika tidak ada respons, silakan masukkan USB receiver ke port lain

### **EN** 3.3 DPI Adjustment

- a. 1200 DPI (Default) → 1600 DPI → 800 DPI. Press the DPI button located at the bottom of the mouse
- b. Reset DPI to default by unplugging USB

### **ID** 3.3 Pengaturan DPI

- a. 1200 DPI (Default) → 1600 DPI → 800 DPI. Tekan tombol DPI yang terletak di bagian bawah mouse
- b. Atur ulang DPI ke default dengan mencabut USB

### **EN** 3.4 Sleep Mode

The mouse goes into sleep mode after idling for 15 minutes for battery saving purpose. Wake mouse from sleep mode with a click of any mouse button

### **ID** 3.4 Modus Sleep

Ketika mouse standby selama 15 menit, maka secara otomatis mouse akan masuk ke dalam modus sleep untuk memperpanjang umur baterai. Untuk membangunkan mouse kembali, klik sembarang tombol pada mouse

## 4 Specifications & Functions | Spesifikasi & Fungsi

- EN**
- Plug and play Nano receiver
  - Robust wireless connection with advanced 2.4GHz 2 Way fast digital RF
  - Up to 10 meters operation distance
  - Sleep Mode for maximum battery life
  - Resolution: 800/1200/1600 dpi
  - Input Battery Power: 1.5V AA x 1
  - Weight: 55g (Mouse); 1.6g (Receiver)
  - Dimension: 110.2mm x 58.2mm x 29.5mm (Mouse);  
19.3mm x 14.5mm x 6.5mm (Receiver)

- ID**
- Plug and play Nano receiver
  - Koneksi wireless dengan Advanced 2.4GHz 2 way fast digital RF
  - Sampai dengan 10 meter jarak operasi
  - Modus Sleep untuk memperpanjang umur baterai
  - Resolusi: 800/1200/1600 dpi
  - Input power baterai: 1.5V AA x 1
  - Berat: 55g (Mouse); 1.6g (Receiver)
  - Dimensi: 110.2mm x 29.5mm x 40mm (Mouse);  
19.3mm x 14.5mm x 6.5mm (Receiver)

## 5 User Advice/Maintenance | Saran/Pemeliharaan

- EN** • Try to avoid contact with strong medicated hand creams/ sanitisers whilst using the mouse
- Regularly remove dust and dirt buildup from the underside of your Prolink mouse to ensure a smooth gliding movement
- It is advisable to use your Prolink mouse on a mouse mat or non-reflective surface
- Do not spray liquid on this product or allow excess liquid to drip inside

- ID** • Cobalah untuk menghindari kontak langsung dengan mouse saat menggunakan pembersih tangan atau sanitisers
- Bersihkan secara teratur debu dan kotoran yang menumpuk di bawah mouse Prolink Anda untuk memastikan gerakan mouse bergerak mulus
- Dianjurkan menggunakan mouse Prolink Anda di atas tatakan mouse atau permukaan yang tidak memantulkan cahaya
- Jangan menyemprotkan cairan pada produk ini atau membuat menjadi kelebihan cairan hingga menetes ke dalam

# Worldwide Customer Care Centers

## **INDONESIA Office**

PT PROLiNK INTIDATA NUSANTARA

Walk-In : Jl. Cideng Barat No. 79, Jakarta Pusat 10150, Indonesia.  
Telephone : +62 21 3483 1777  
Email Support : support.id@prolink2u.com

## **MALAYSIA Office**

FIDA SYSTEMS (M) SDN BHD

Walk-In : 29 Jalan USJ 1/31, 47600 Subang Jaya,  
Selangor Darul Ehsan, Malaysia.  
Telephone : +60 3 8024 9151  
Email Support : support.my@prolink2u.com

## **SINGAPORE Office**

FIDA INTERNATIONAL (S) PTE LTD

Walk-In : Block 16 Kallang Place #06-02,  
Kallang Basin Industrial Estate, Singapore 339156.  
Telephone : +65 6357 0668  
Email Support : support@prolink2u.com

## **Technical Support Hotline**

INDONESIA : +62 21 3483 1717  
MALAYSIA : +60 3 8023 9151  
SINGAPORE : +65 6357 0666

**Note:** Closed on Saturdays, Sundays and local/regional Public Holidays.

Prolink is a registered trademark of Fida International (S) Pte Ltd. Other brands and product names are trademarks or registered trademarks of their respective holders. Product images are purely for illustrative purposes and may defer from the actual product. Specifications are subjected to changes without prior notice. Copyright © 2022 Fida International (S) Pte Ltd.