



Model No:
DL-7203E

Quick Installation Guide

4G LTE mobile Wi-Fi

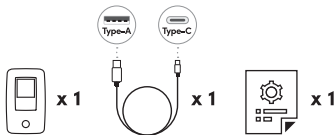


Version 2.00
(English | Indonesian)

Scan me:



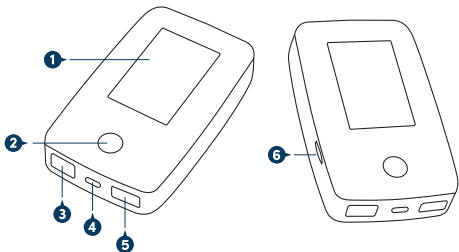
1 Package Contents



Notes:

1. The illustrations in this document may appear differently from your model.
2. If any of above item is not packed in your package upon opening, please consult your seller immediately.

2 Overview



2 Overview

Interface and Buttons

1. LCD display
2. Power button
3. LAN port
4. USB Type-C port (Input)
5. USB Type-A port (Output)
6. Nano SIM slot

3 Hardware Installation

Installing the Nano SIM card

After turning off the device, insert the Nano SIM card into the Nano SIM card slot, and then power on to work normally.

Note:

1. Make sure the size of Nano SIM card is appropriate.
2. Put the Nano SIM card metal piece upward and push it into the card slot gently. When you hear a click, it indicates that the Nano SIM card is installed in place, and ensure that the Nano SIM card is in the correct direction.
3. Push the Nano SIM card in slightly, and then release it completely to eject the Nano SIM card.

Charge the battery

If the unit has not been used for a long time or the battery is completely depleted, the unit may not power up immediately after the charger is plugged in. Please charge the battery for a period of time before trying to turn it on.

Note:

1. Use only chargers that are compatible with this unit and supplied by the specified manufacturer. Using an incompatible charger or a charger from an unknown manufacturer may cause MiFi failure, malfunction, or even fire.
2. Recharge battery: connect the provided USB cable to DL-7203E's USB Type-C port.
3. Power bank: work as a power bank to charge other devices by connecting through DL-7203E's USB Type-A port.

3 Hardware Installation

Power On the device

Press and hold the power button for 5-10 seconds until power is turned on.

Use 4G network

The management parameters of this machine have been preset according to the requirements. It will automatically connect to the Internet.

Note:

You can log in to the web administration page and enable or disable automatic connections.

4 Web-based Configuration

1. Connecting to the device.

A. With Wi-Fi connection.

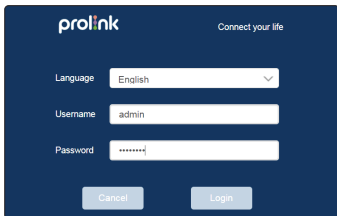
- Use your normal Wi-Fi application on the client to search for the available wireless network
- Select the SSID of your device (default SSID ProLink_XXXX) to connect
- Default password is prolink12345

B. With USB connection.

- Connect the device with USB cable into Computer USB port
- NDIS driver will be installed automatically

4 Web-based Configuration

2. Open the browser and enter `http://192.168.1.1` or `http://m.home`, Enter default Username : **admin** and Password: **password** to login.



prolink Connect your life

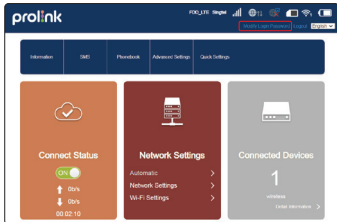
Language English

Username admin

Password *****

Cancel Login

3. Click the upper right corner – Modify Login Password to change the default login password.



prolink FDD LTE Signal

Modify Login Password Login English

Information S/W Phonebook Advanced Settings Quick Settings

Connect Status ON 0b/s 0b/s 00:02:10

Network Settings Automatic Network Settings Wi-Fi Settings

Connected Devices 1 wireless Total Information

4 Web-based Configuration

← Login Password

Current Password *

New Password *

Confirm New Password *

Apply

When you log in wireless router, need to input this password (password is different from your wireless network password)

?

4. Click Wi-Fi Settings to change default SSID and password.

← Wi-Fi Settings

Set up wireless hotspot so that your mobile phone or laptop could access network via it

Main SSID Wi-Fi Switch Enable Disable

Guest SSID Multi SSID Switch Enable Disable

Apply

WPS

Internet Wi-Fi

Advanced Settings

WLAN MAC Filter

Main SSID

Network Name (SSID) *

SSID Broadcast

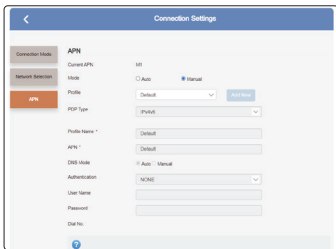
Security Mode

Pass Phrase *

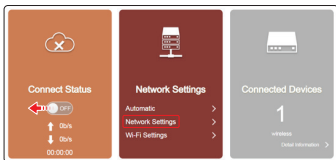
Display Password

4 Web-based Configuration

5. APN settings (If SIM card's APN cannot be found by Auto Mode).
- 1) Click Network Settings
 - 2) Select Mode to Manual
 - 3) Click Add New button to enter the correct APN settings accordingly
 - The APN information should be available in the booklet that comes along with the SIM card or contact the telco to check.

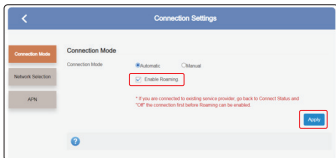


6. Enable Roaming for overseas travel.
- 1) Switch off connection under Connect Status
 - 2) Click Network Settings

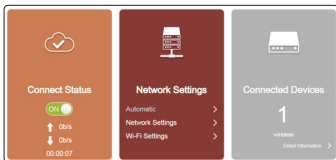


4 Web-based Configuration

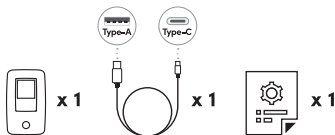
3) Tick "Enable Roaming" and click "Apply" Button.



4) Switch on the connection after Roaming Enable.



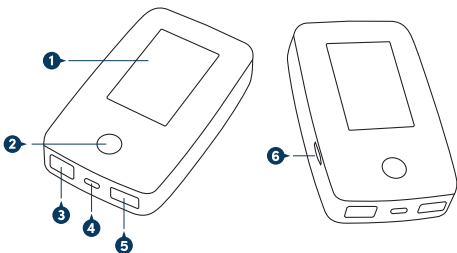
1 Isi Kemasan



Nota:

1. Ilustrasi dalam dokumen ini mungkin tampak berbeda dari model Anda.
2. Jika salah satu item di atas tidak dikemas dalam paket Anda saat dibuka, harap segera berkonsultasi dengan seller Anda.

2 Keterangan Gambar



2 Keterangan Gambar

Antaramuka dan Tombol

1. Layar LCD
2. Tombol Power
3. Port LAN
4. Port USB Tipe-C (Masukan)
5. Port USB Tipe-A (Keluaran)
6. Nano SIM slot

3 Instalasi Perangkat Keras

Memasang kartu SIM Nano

Setelah mematikan perangkat, masukkan kartu SIM Nano ke dalam slot kartu SIM Nano, lalu hidupkan untuk bekerja secara normal.

Nota:

1. Pastikan ukuran kartu SIM Nano sesuai.
2. Letakkan potongan logam kartu SIM Nano ke atas dan dorong ke dalam slot kartu dengan lembut. Saat Anda mendengar bunyi klik, ini menunjukkan bahwa kartu SIM Nano terpasang di tempatnya, dan memastikan bahwa kartu SIM Nano berada di arah yang benar.
3. Dorong kartu SIM Nano sedikit, lalu lepaskan sepenuhnya untuk mengeluarkan kartu Sim Nano.

Isi baterai

Jika unit tidak digunakan untuk waktu yang lama atau baterai benar-benar habis, unit mungkin tidak langsung menyala setelah pengisi daya dicolokkan. Harap isi daya baterai selama beberapa waktu sebelum mencoba menyalakannya.

Nota:

1. Gunakan hanya pengisi daya yang kompatibel dengan unit ini dan dipasok oleh pabrikan yang ditentukan. Menggunakan pengisi daya yang tidak kompatibel atau pengisi daya dari pabrikan yang tidak dikenal dapat menyebabkan kegagalan MiFi, kegagalan fungsi, atau bahkan kebakaran.
2. Isi ulang baterai: sambungkan kabel USB yang disediakan ke port USB Type-C DL-7203E.
3. Bank daya: berfungsi sebagai bank daya untuk mengisi daya perangkat lain dengan menghubungkan melalui port USB Type-A DL-7203E.

3 Instalasi Perangkat

Nyalakan perangkat

Tekan dan tahan tombol daya selama 5-10 detik hingga daya dihidupkan.

Gunakan jaringan 4G

Parameter manajemen mesin ini telah ditetapkan sesuai dengan persyaratan. Secara otomatis akan terhubung ke Internet.

Nota:

Anda dapat masuk ke halaman administrasi web dan mengaktifkan atau menonaktifkan otomatis koneksi.

4 Pengaturan melalui halaman Web

1. Menghubungkan ke perangkat.

A. Dengan koneksi Wi-Fi.

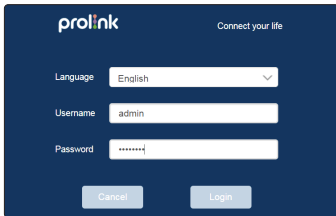
- Gunakan aplikasi Wi-Fi normal Anda di klien untuk mencari jaringan nirkabel yang tersedia
- Pilih SSID perangkat Anda (SSID default Prolink_ xxxx) untuk terhubung
- Kata sandi default adalah prolink12345

B. Dengan koneksi USB.

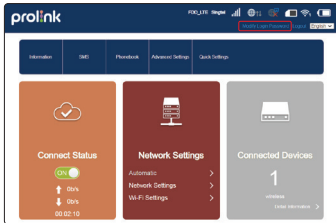
- Hubungkan perangkat dengan kabel USB ke port USB Komputer
- Driver NDIS akan diinstal secara otomatis

4 Pengaturan melalui halaman Web

2. Buka browser dan masukkan `http://192.168.1.1` atau `http://m.home`, Enter default Nama Pengguna: **admin** dan Kata Sandi: **password** untuk masuk.



3. Klik pojok kanan atas – Ubah Kata Sandi Masuk untuk mengubah kata sandi masuk default.



4 Pengaturan melalui halaman Web

The screenshot shows the 'Login Password' configuration page. It features three input fields for 'Current Password', 'New Password', and 'Confirm New Password'. An 'Apply' button is located on the right side. Below the input fields, a light blue box contains the text: 'When you log in wireless router, need to input this password (password is different from your wireless network password)'. A help icon (?) is visible at the bottom left.

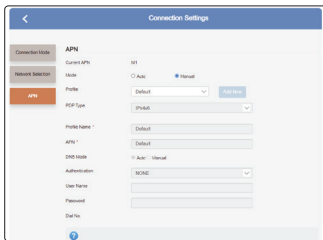
4. Klik Pengaturan Wi-Fi untuk mengubah SSID dan kata sandi default.

The screenshot shows the 'Wi-Fi Settings' configuration page. At the top, it says 'Set up wireless hotspot so that your mobile phone or laptop could access network via it'. There are two sections: 'Main SSID' and 'Guest SSID'. The 'Main SSID' section is active and shows the following settings: 'Wi-Fi Switch' is set to 'Enable'; 'Multi SSID Switch' is set to 'Disable'; 'Network Name (SSID)' is 'Protek_3001'; 'SSID Broadcast' is checked; 'Security Mode' is 'WPA2AES-PSK'; and 'Pass Phrase' is '*****'. There is an 'Apply' button on the right. A sidebar on the left contains menu items: 'Main SSID', 'Guest SSID', 'WPS', 'Internet Wi-Fi', 'Advanced Settings', and 'WLAN MAC Filter'.

4 Pengaturan melalui halaman Web

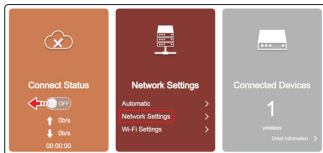
5. Pengaturan APN (Jika APN kartu SIM tidak dapat ditemukan dengan Mode Otomatis).

- 1) Klik Network Settings
- 2) Pilih Mode to Manual
- 3) Klik tombol Add New untuk memasukkan pengaturan APN yang benar sesuai
 - Informasi APN harus tersedia di buklet itu disertakan dengan kartu SIM atau hubungi perusahaan telekomunikasi untuk memeriksanya.



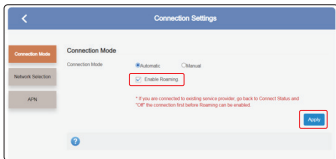
6. Aktifkan Roaming untuk perjalanan ke luar negeri.

- 1) Matikan koneksi di bawah Connect Status
- 2) Klik Pengaturan Jaringan

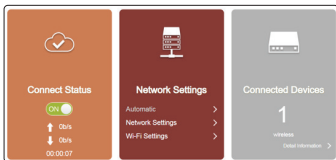


4 Pengaturan melalui halaman Web

3) Ketuk "Enable Roaming" dan ketuk tombol "Apply".



4) Mengaktifkan koneksi setelah Roaming Diaktifkan.



Worldwide Customer Care Centers

INDONESIA Office

PT PROLINK INTIDATA NUSANTARA

Walk-In : Jl. Cideng Barat No. 79, Jakarta Pusat 10150, Indonesia.

Telephone : +62 21 3483 1777

Sale Enquiries : sales.id@prolink2u.com

Technical Support : support.id@prolink2u.com

MALAYSIA Office

FIDA SYSTEMS (M) SDN BHD

Walk-In : 29 Jalan USJ 1/31, 47600 Subang Jaya, Selangor Darul Ehsan, Malaysia.

Telephone : +65 3 8024 9151

Sale Enquiries : sales.my@prolink2u.com

Technical Support : support.my@prolink2u.com

SINGAPORE Office

FIDA INTERNATIONAL (S) PTE LTD

Walk-In : Block 16 Kallang Place #06-02, Kallang Basin Industrial Estate, Singapore 339156.

Telephone : +65 6357 0668

Sale Enquiries : sales@prolink2u.com

Technical Support : support@prolink2u.com

Technical Support Hotline

INDONESIA : +62 21 3483 1717

MALAYSIA : +60 3 8023 9151

SINGAPORE : +65 6357 0666

Note: Closed on Saturdays, Sundays and local/regional Public Holidays.

Register online for your Product Warranty at www.prolink2u.com

Prolink is a registered trademark of Fida International (S) Pte Ltd. Other brands and product names are trademarks or registered trademarks of their respective holders. Product images are purely for illustrative purposes and may differ from the actual product. Specifications are subjected to changes without prior notice. Copyright © 2024 Fida International (S) Pte Ltd.