

Solar Inverter Solutions



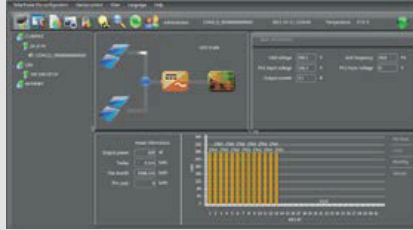
Remote Monitoring & Management

SOLARPOWER



SolarPower is a solar inverter monitoring software. It can monitor multiple devices via USB and Serial port at the same time. The major functions of SolarPower monitoring software include data log for devices, power generation statistics, alarm messages, fault messages and parameter setting for devices.

SOLARPOWER PRO



SolarPower Pro is a solar inverter monitoring software to monitor up to 247 devices via modbus or SNMP interface. It allows web browsing in a networking environment. The major functions of SolarPower Pro monitoring software include data log for devices, power generation statistics, alarm messages, fault messages, and parameter setting for devices.

WATCHPOWER



WatchPower is an off-grid inverter monitoring software which can monitor multiple devices via serial port at the same time. The major functions include data log for devices, alarm and fault recording. Besides, it also can configure advanced parameters such as charger source priority, output source priority, AC input range and battery type based on diverse applications.

Household

HAUS V SERIES [1-5KVA]

- Pure sine wave solar inverter
- Output power factor 1.0
- Selectable high power charging current
- Selectable input voltage range for home appliances and personal computers
- Configurable AC/Solar input priority via LCD setting
- Compatible to AC mains or generator power
- Auto restart while AC is recovering
- Overload and short circuit protection
- Smart battery charger design for optimized battery performance
- Cold start function



HAUS V III SERIES [1.5-6KVA]

- Pure sine wave solar inverter
- Output power factor 1.0
- Removable LCD control module
- Built-in BMS communication for Lithium-ion Batteries
- Built-in Wi-Fi for mobile monitoring
- Configurable AC/PV Output usage timer and prioritization
- Selectable high power charging current
- Compatible to Utility Mains or generator input
- Auto restart while AC is recovering
- Cold start function
- Battery independent design



IPS SERIES POWER INVERTER [1.2-2.2KVA]

- Selectable Voltage Range
- Advanced Protection
- LCD and/or LED panel
(Refer to the specifications)
- Auto restart while AC is recovering
- Auto re-charge while AC is recovering
- Solar input with MPPT charge controller (Optional)



Commercial

HAUS MAX SERIES [3.6-11KVA]

- Pure sine wave solar Inverter
- Output power factor 1.0
- Built-in Wi-Fi for mobile monitoring
- Supports USB On-the-Go function
- Built-in BMS communication for Lithium-ion Batteries
- Battery independent design
- Configurable AC/PV output usage timer and prioritization
- Selectable high power charging current
- Selectable input voltage range for home appliances and personal computers
- Compatible to Utility Mains or generator input
- Optional DC output for DC fan, LED bulb, router and so on
- Parallel operation up to 6 units only available for 8-11KVA



HAUS MAX II [8KVA]

- Pure sine wave solar Inverter
- Output power factor 1.0
- Touchable button with large 5" colored LCD
- Built-in Wi-Fi for mobile monitoring
- Supports USB On-the-Go function
- Data log events stored in the inverter
- Built-in BMS communication for Lithium-ion Batteries
- Battery independent design
- Configurable AC/PV output usage timer and prioritization
- Selectable high power charging current
- Compatible to Utility Mains or generator input
- Built-in DC output for DC fan, LED bulb, router and so on
- Parallel operation with 6 units



HAUS ROYALE SERIES [3-5KVA]

- Pure sine wave solar Inverter
- Output power factor 1.0
- Zero transfer time to protect mission-critical loads such as ATM and servers
- Detachable LCD control module with multiple communications
- Built-in Wi-Fi for mobile monitoring
- Supports USB On-the-Go function
- Built-in BMS communication for Lithium-ion Batteries
- Configuration AC/PV output usage timer and prioritization
- Parallel operation up to 9 units (Optional)



HAUS ROYALE II SERIES [5-6KVA]

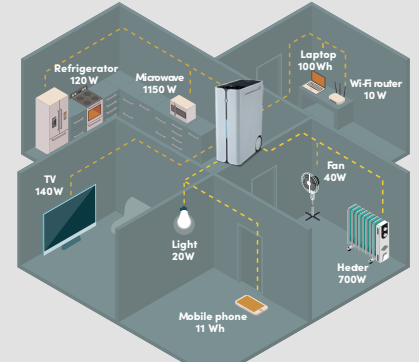
- Pure sine wave solar Inverter
- Output power factor 1.0
- Zero transfer time to protect mission-critical loads such as ATM and servers
- Detachable LCD control module with multiple communications
- Built-in Wi-Fi for mobile monitoring
- Supports USB On-the-Go function
- Built-in BMS communication for Lithium-ion Batteries
- Configuration AC/PV output usage timer and prioritization
- Parallel operation up to 9 units (Optional)
- Battery independent design



Power System with Lithium-ion Batteries

PORTACELL SERIES [1.2-3KVA]

- Scalable output power from 3kW to 6kW
- Expandable battery capacity from 2.5kWh to 7.5kWh (3kW model)
- Dual inputs, grid and solar
- Built-in battery management system (BMS)
- Built-in Wi-Fi for mobile monitoring (iOS/Android App is available)



LUMENION 510A & 810A [5-8KVA]

- 5KW On-grid inverter with 5KWh Lithium-ion battery
- 8KW Off-grid (Hybrid) inverter with 5KWh Lithium-ion battery
- Built-in Wi-Fi for mobile monitoring (iOS/Android App is available)
- Built-in battery management system (BMS)
- Selectable input voltage range for personal computers and home appliances
- Scalable battery expansion up to 10 modules
- Support wall mounted and standalone installation



LUMENION 510 [5.5KVA]

- 5.5KW On-grid inverter with 5KWh Lithium-ion battery
- Pure sine wave output
- Built-in Wi-Fi for mobile monitoring (iOS/Android App is available)
- Supports USB On-the-Go function
- Built-in BMS communication
- Built-in communication ports (USB/RS232/Dry-contact)
- Programmable multiple operation modes (Grid-tie, Off-grid and Grid-tie with backup)
- Battery cycle life 8000 at 25°C, 60% DOD
- Scalable battery expansion up to 10 modules
- Support wall mounted and standalone installation



LIO SERIES

- Lithium Iron Phosphate (LFP) cell guarantees safety and reliability
- Modular design
- Life cycle : 8000 cycles at 25°C, 60% DOD
- 1.5C continuous discharging current
- High surge discharging current up to 2C
- Wide operating voltage range from 34.5 to 52.5Vdc
- Flexible front and Rear installation
- Communication protocols: RS485
- Easy capacity extension by paralleled



LIO II 4810

- Lithium Iron Phosphate (LFP) cell guarantees safety and reliability
- Life cycle: 8000 cycles at 25°C, 60% DOD
- Suitable for wide range of inverters with 48V system
- Compact size and Lightweight
- Modular design for easy scalable

