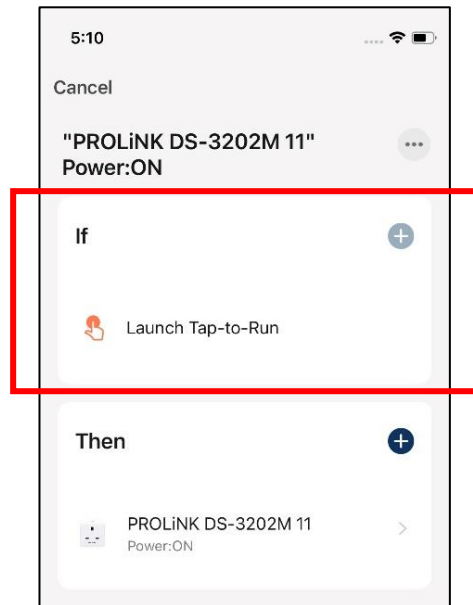


A step-by-step guide to set up Siri Voice Control for Apple Shortcuts

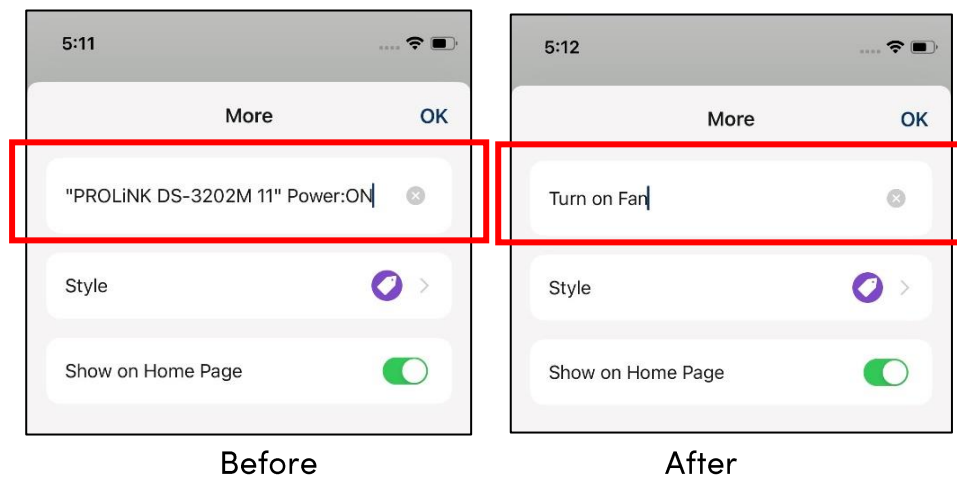
Before You Start:

The ProLink Smart Home Devices must be set up through mEzee App first.

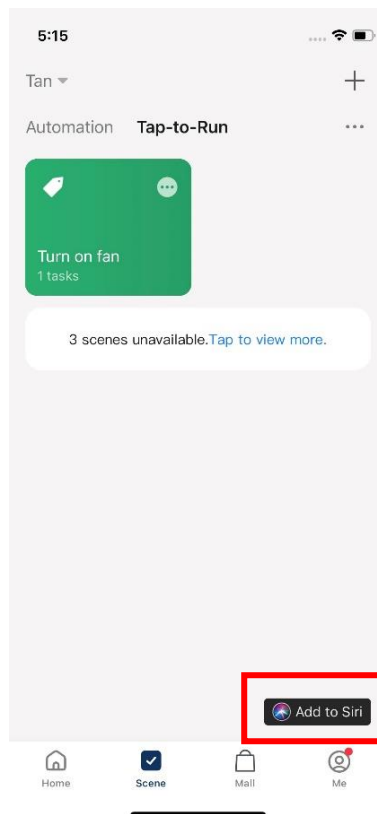
Step 1. Launch mEzee app, tap "Launch Tap-to-Run" found under scene tab.



Step 2. Edit the voice command for Siri's Voice Control as to your personal preference.



Step 3. Tap “Add to Siri” located at the screen’s bottom right corner to save setting.



Step 4. Setup is completed if the below screen is shown.

