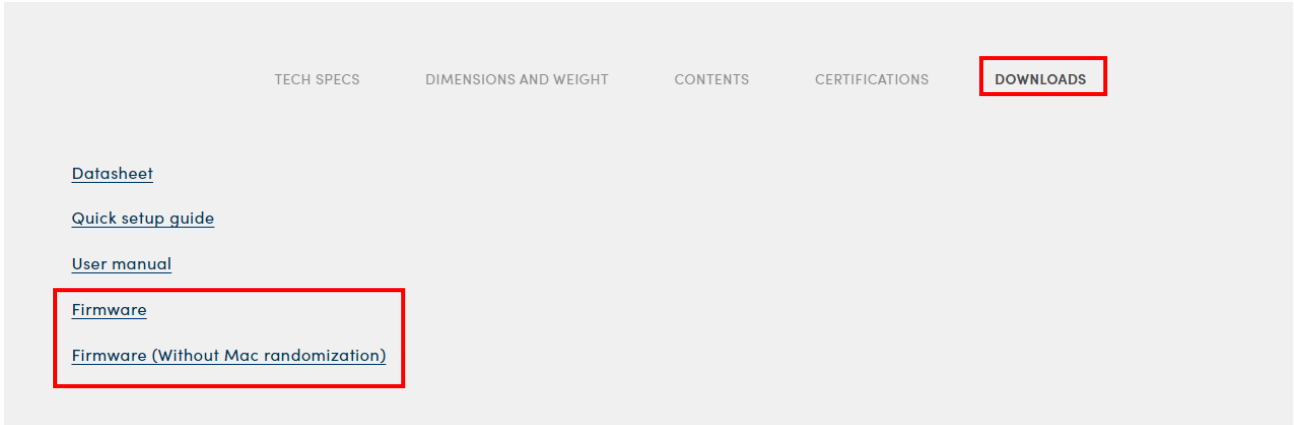


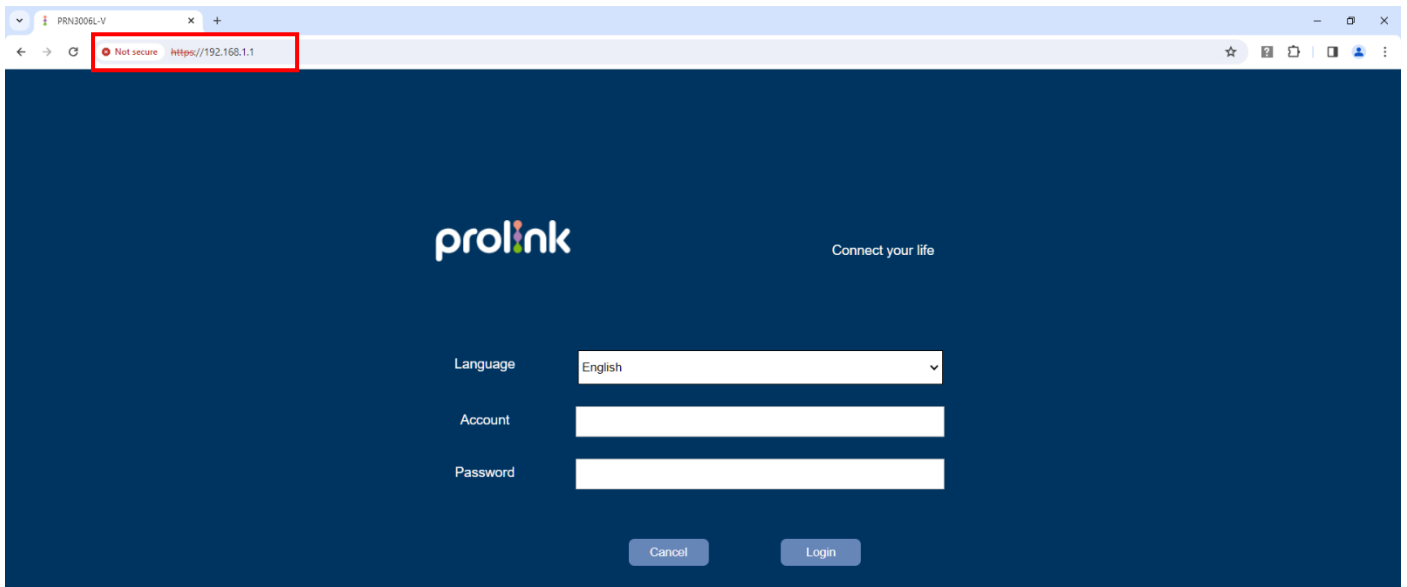
## A step-by-step guide to PRN3006Lv2 firmware update

**Step 1.** Download the latest version of the firmware for your device under the downloads tab, scroll down to the bottom of the webpage.

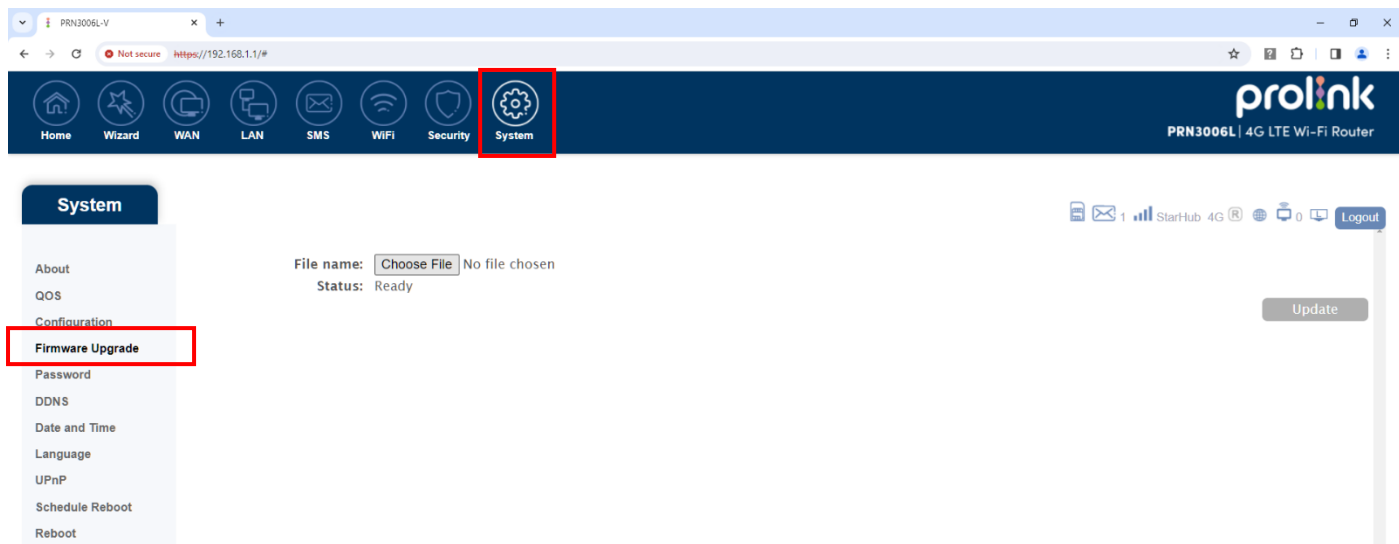


**Step 2.** Enter URL <http://192.168.1.1> (please include <http://>) to the web browser. Enter your login username and password on the login page and then click [Login].

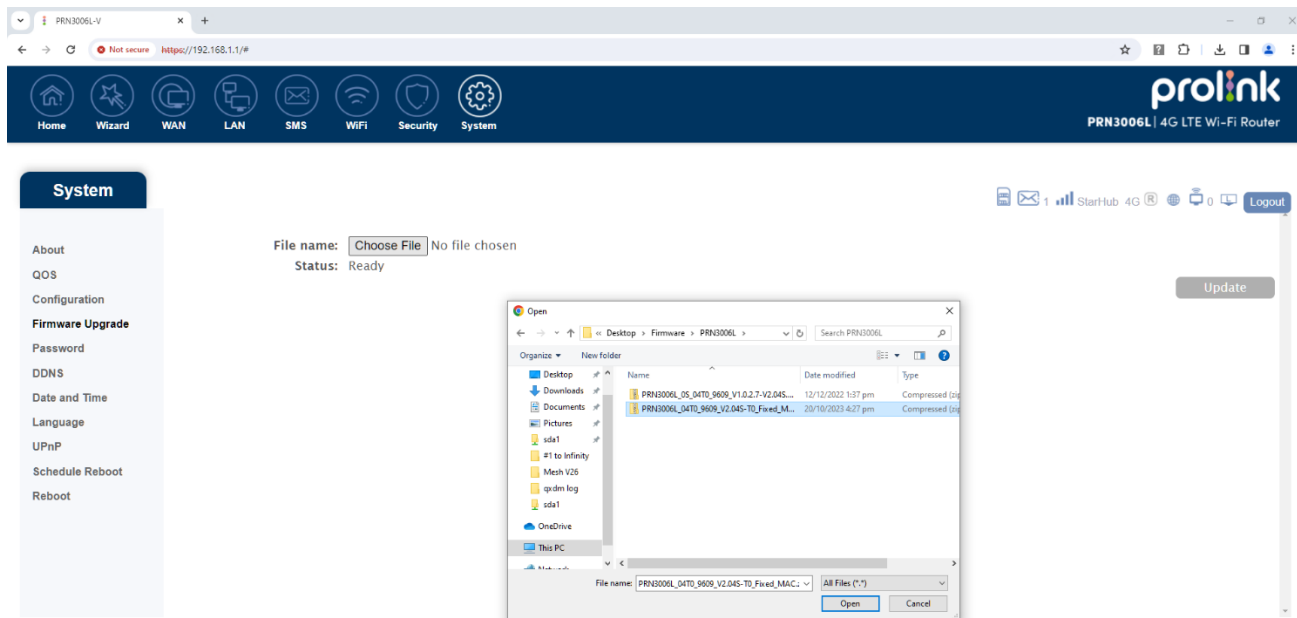
The username and password are printed on the label pasted at the base of the unit.



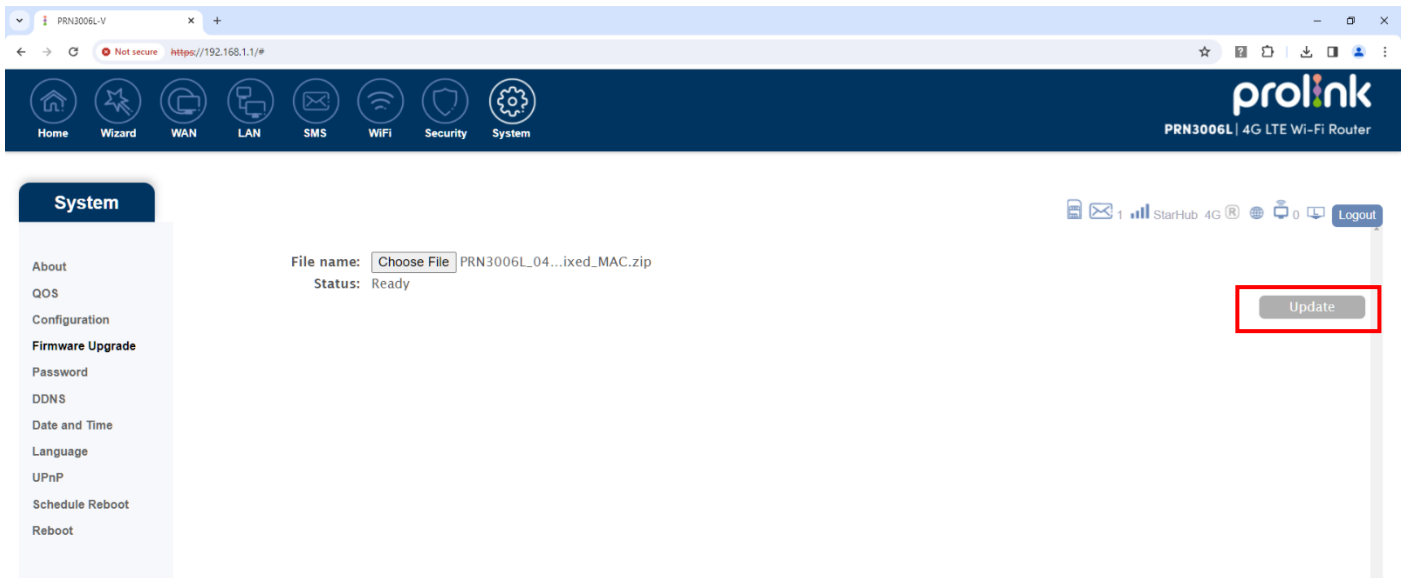
**Step 3.** Find **System** on top panel and click on **Firmware Upgrade** on the sidebar.



**Step 4.** Click on [Choose File] and choose the firmware file you want to upload and click [Open] button to upload firmware.



**Step 5.** Click [Update] to proceed.



*Note: Do not interrupt the update process and it is recommended to use a wired connection from the PC/laptop to do the update.*

**Step 6.** Once the update is completed, reset the unit by using a pin to press and hold the reset button (located at the base of the unit) for 5 to 7 seconds (while the unit is powered on) then release. You can reconfigure the unit (i.e., changing of SSID and wireless password) once the unit restarted.

