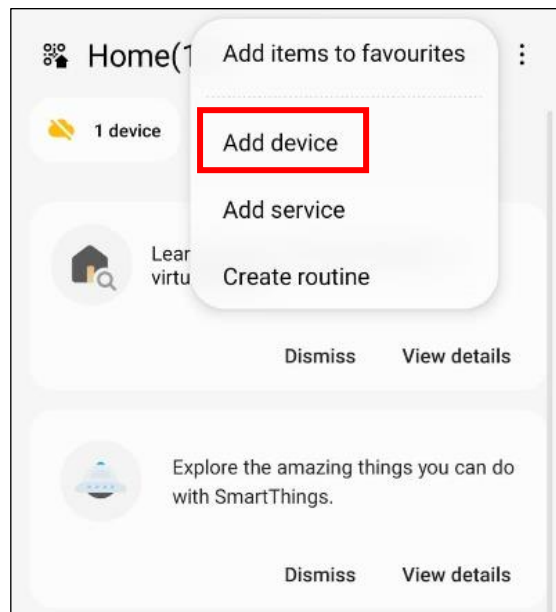


## A step-by-step guide to link mEzee app with Samsung SmartThings app

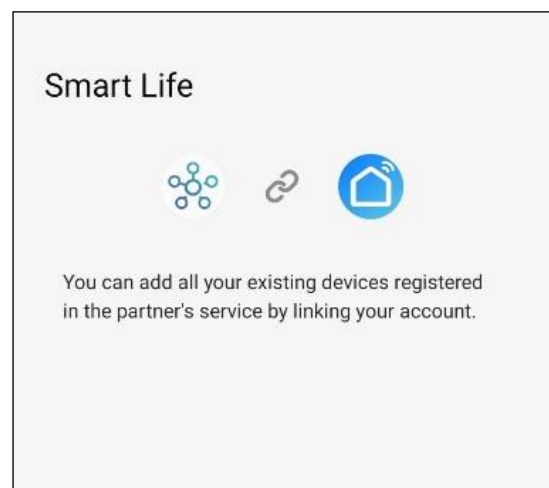
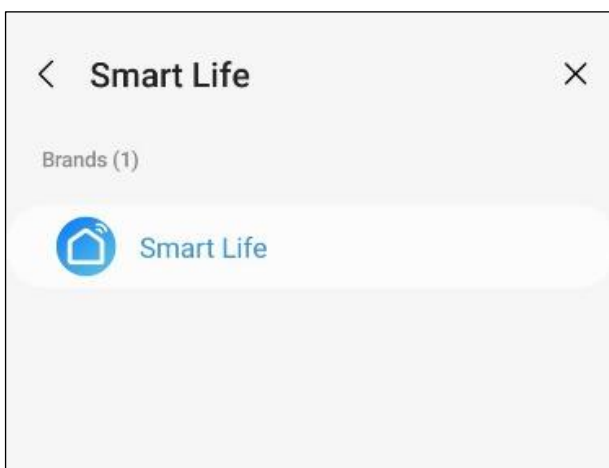
Before You Start:

The Prolink Smart Home Devices must first be set up through mEzee app.

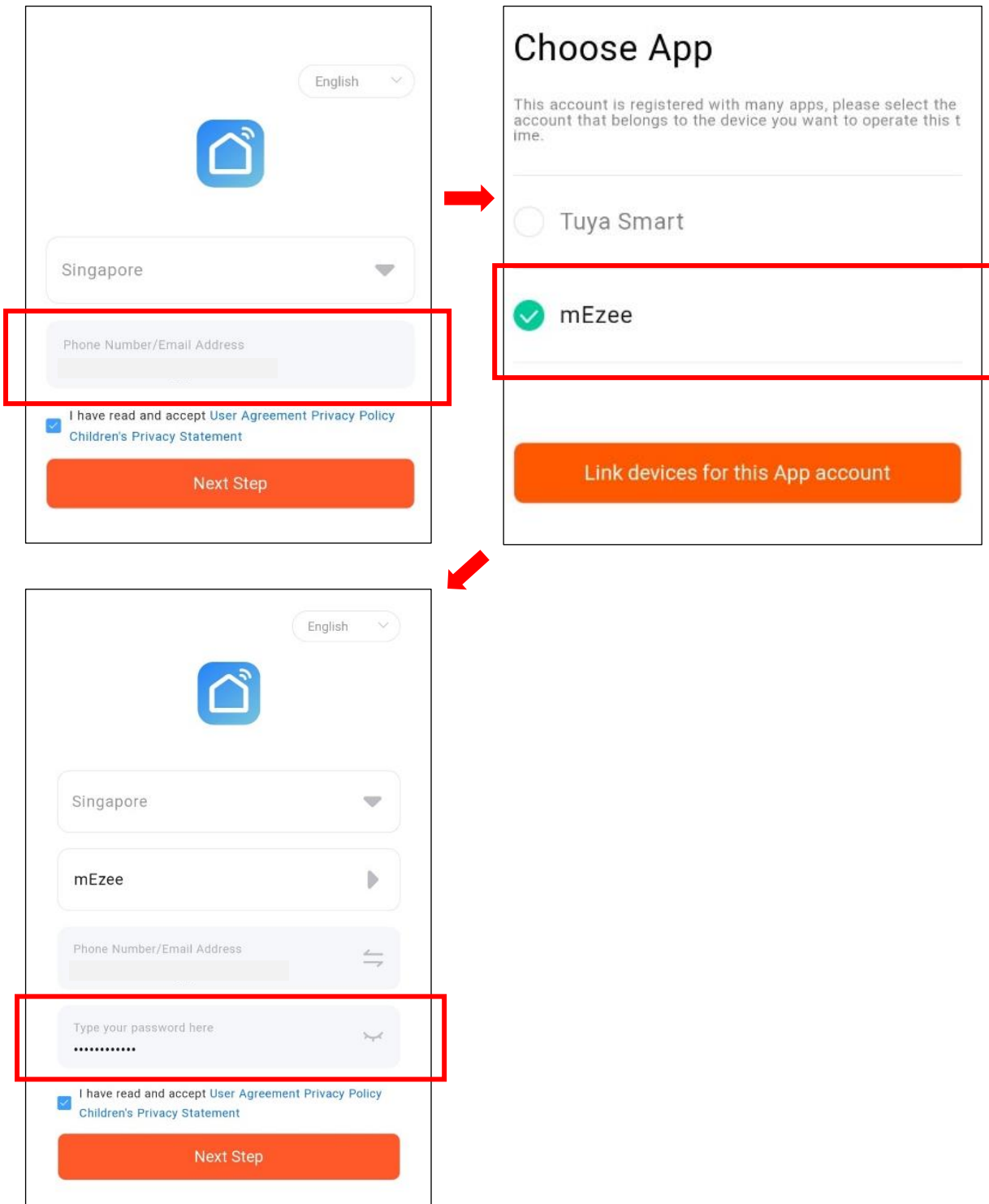
Step 1. Launch Samsung SmartThings app, tap “+” icon at the screen’s top right and tap “Add Device”.



Step 2. Search for “Smart Life” and tap “Next” to proceed.



Step 3. Enter your mEzee app's email account, select "mEzee" in the next screen and lastly, input your mEzee app's password for authorization.



Step 4. Setup is successful if the below screen is shown.

