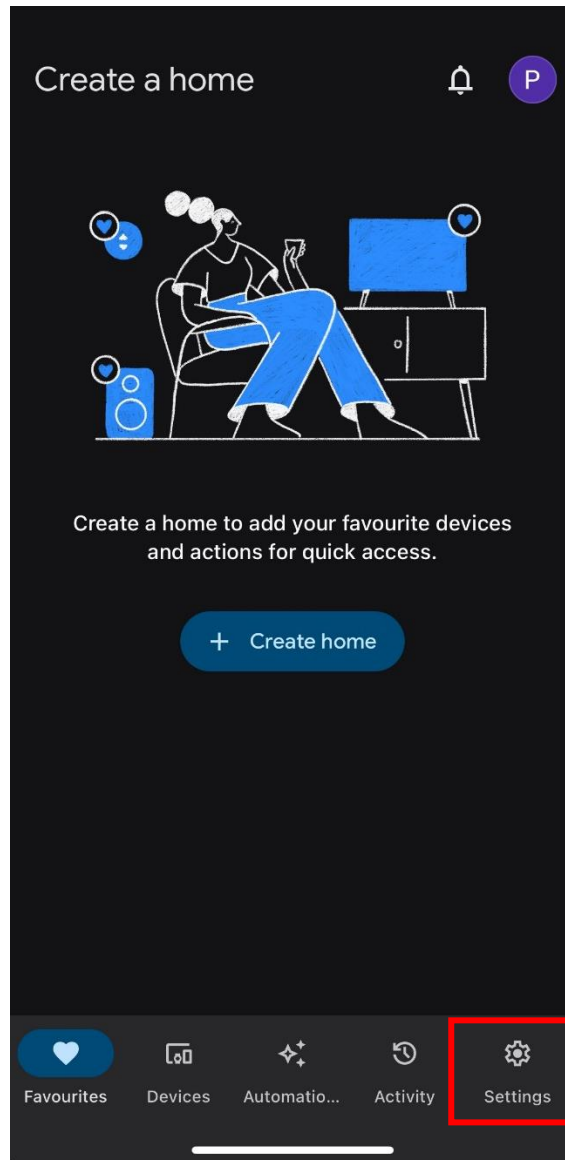


A step-by-step guide to link mEzee app with Google Home app

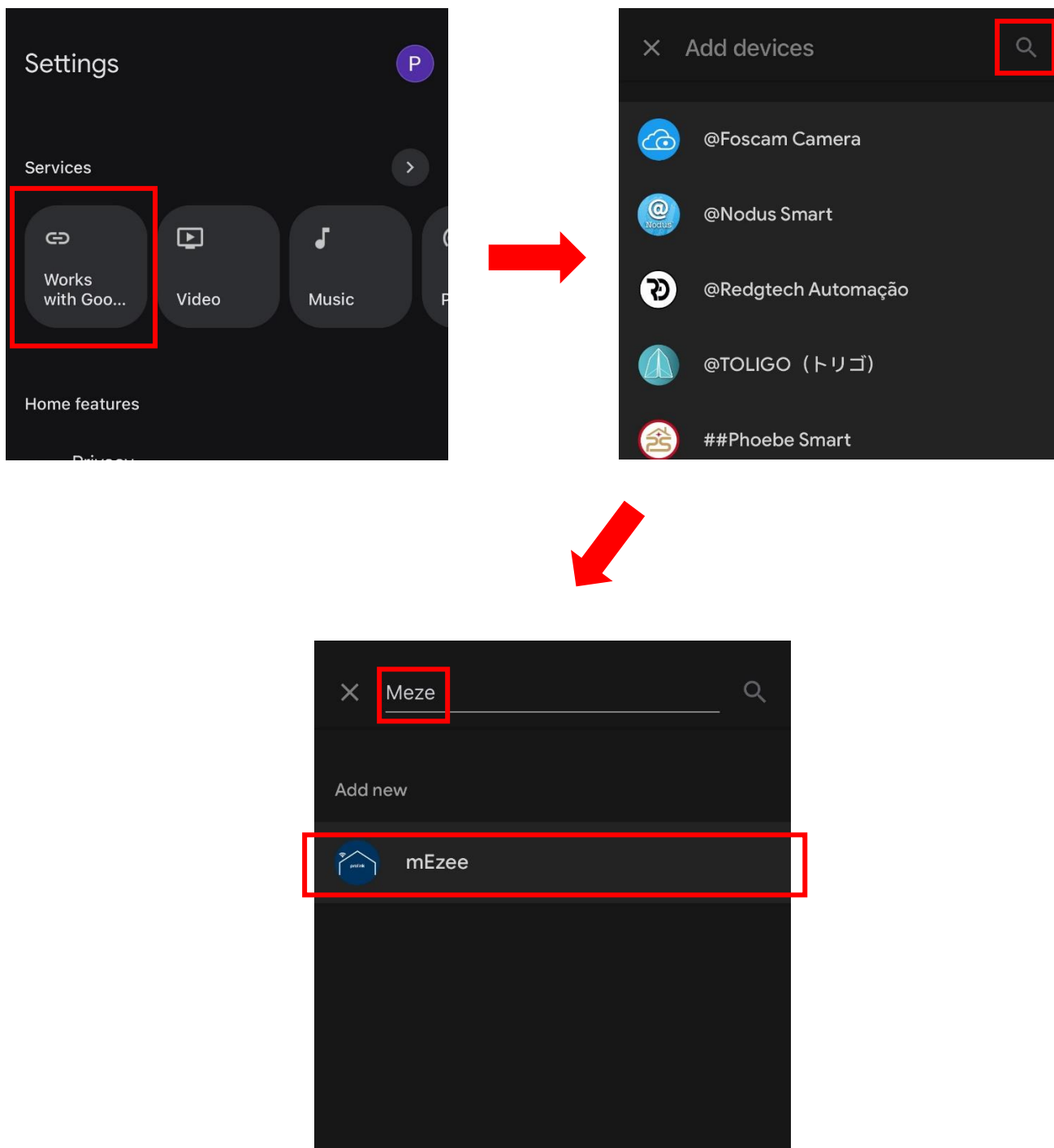
Before You Start:

The Prolink Smart Home Devices must first be set up through mEzee app.

Step 1. Launch and log-in to Google Home app, tap "Settings" located at the bottom right of the screen.



Step 2. Tap “Work with Google” and search for “mEzee”.



Step 3. Enter your mEzee account's credentials to sync the registered smart home devices from mEzee app to Google Home app.

