



# Digital Display USB Type-C to C PD Cable

GCC-100-02



Whether you're charging at the power outlet or at the end of your devices, the **GCC-100-02 Digital Display USB C to C PD Cable** allows you to see the status of your charging at a glance.

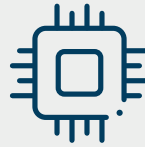
Reinforced with zinc shell, nylon braid and an E-Mark smart chip embedded within, this cable provides a safe universal connection across a wide range of smartphones, tablets, laptops, and more, offering you convenient charging from virtually anywhere with its extended 2 meter length.

## Key Features



### Smart Display

A dual-detection display of PD charging speed to device or from power outlet.



### E-Mark Smart Chip

Recognizes the voltage and current; ensuring safe power delivery to protect your devices.



### Data Transfer Speed of up to 480Mbps

Seamless data transfer speed of up to 480Mbps, ideal for transferring media and files to or from your devices.



### 2m Cable Length

Extra long cable gives user more flexibility.



### Nylon Braided + Zinc Shell

Designed with nylon braiding to withstand bends and zinc shell for added durability & dissipate heat quickly.



### Universal Connection

Highly compatible with a multitude of Type-C devices; smartphones, tablets, laptops and more.

## Specifications

<b>Cable connector</b>	USB™ Type-C to C
<b>Material</b>	Zinc Shell Casing + Nylon Braided Cable
<b>Data Transfer Speed</b>	480Mbps
<b>Output Current/Power</b>	PD 20V/5A/100W
<b>Cable Length</b>	2 Meter
<b>Features</b>	Digital Display (Two-way detectable fast charging display) Power Delivery 3.0 E-Mark Smart Chip

Note: Specifications are subjected to changes without prior notice.

### What is an E-Mark Smart Chip?

The Electronically Marked (E-Mark) Smart Chip is a protocol controller and safe-protection mechanism required when the power adapter's electric current output is greater than 3A, or a 5A wire.

### Interface & Material

**Durable & Flexible**

**Zinc Shell Casing**

**Smart Display**

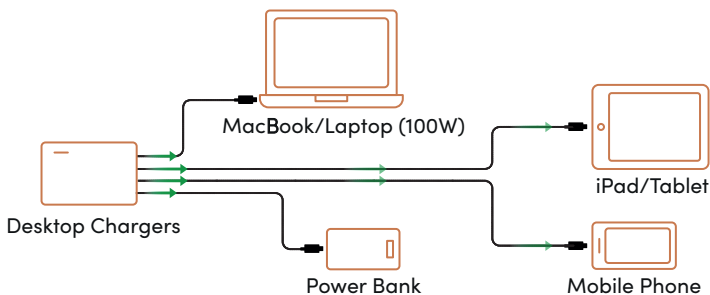
**Power Delivery (PD)**  
Indicates fast-charging mode

**Wattage (W)**  
Real time display of charging power

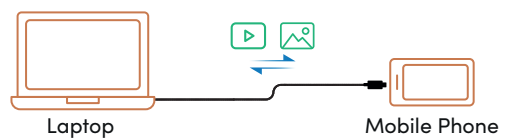
**Nylon-braided**

### Usage Scenarios

#### SCENARIO 1 - HIGH-SPEED CHARGING



#### SCENARIO 2 - DATA TRANSMISSION



Ver1.0\_16.02.2022

Authorised Distributor/ Reseller:



ProLink is a registered trademark of Fida International (S) Pte Ltd. Other brands and product names are trademarks or registered trademarks of their respective holders. Product images are purely for illustrative purposes and may defer from the actual product. Specifications are subjected to changes without prior notice. Copyright © 2022 Fida International (S) Pte Ltd.