



Connectivity & Networking Solutions

Fida International (S) Pte Ltd

Sales enquiries: **M** sales@prolink2u.com | **W** www.prolink2u.com



LTE ROUTERS

CAT 4

Smart 4G LTE Wireless Router with Voice

PRN3006L

- LTE Speed: CAT4, 150Mbps DL, 50Mbps UL
- LTE Bands: B1/3/5/7/8/20/38/40 (Standard)
- 2x External 5dBi LTE Antenna
- Wi-Fi Rate: 2.4G 802.11b/g/n, 2x2, 300Mbps
- Internal Wi-Fi Antenna
- 128MB Flash, 64MB RAM
- 1x GE WAN/LAN, 1x GE LAN
- 1x VoLTE
- 12V/1A Power Adapter
- Support Auto APN, USSD, SMS
- Connect up to 32 Devices



4G LTE Wireless Router

DL-7300

- LTE Speed: CAT4, 150Mbps DL, 50Mbps UL
- LTE Bands: B1/3/5/7/8/20/38/40/41 (Standard)
- Internal LTE Antenna
- External Antenna (Optional): 2x SMA Connectors
- Wi-Fi Rate: 2.4G 802.11b/g/n, 2x2, 300Mbps
- Internal Wi-Fi Antenna
- 128MB Flash, 64MB RAM
- 1x FE WAN/LAN
- 1x VoLTE (Optional)
- 12V/1A Power Adapter
- Support Auto APN, USSD, SMS
- Support Battery LED Status
- Connect up to 32 Devices
- 3000mAh Battery (Optional)



4G LTE Wireless Router with Battery

DL-7306

- LTE Speed: CAT4, 150Mbps DL, 50Mbps UL
- LTE Bands: B1/3/5/7/8/20/38/40/41 (Standard)
- 2x External 5dBi LTE Antenna
- Wi-Fi Rate: 2.4G 802.11b/g/n, 2x2, 300Mbps
- Internal Wi-Fi Antenna
- 128MB Flash, 64MB RAM
- 1x FE WAN, 3x FE LAN
- 1x VoLTE (Optional)
- 12V/1A Power Adapter
- Support Auto APN, USSD, SMS
- Support Battery LED Status
- Connect up to 32 Devices
- 3000mAh Battery (Optional)



LTE ROUTERS

CAT 6

4G+ Fixed Wi-Fi Router

DL-7303

- LTE Speed: CAT6, 300Mbps DL, 50Mbps UL
- LTE Bands: B1/3/5/7/8/20/38/40 (Standard)
- 2x External 5dBi LTE Antenna
- Wi-Fi Rate:
 - 2.4GHz 802.11b/g/n, 2x2, 300Mbps
 - 5GHz 802.11a/n/ac, 2x2, 867Mbps
- Internal Wi-Fi Antenna
- 512MB Flash, 256MB RAM
- 1x GE WAN/LAN, 3x GE LAN
- 12V/1A Power Adapter
- Support Auto APN, USSD, SMS
- Connect up to 64 Devices
- 2FF USIM



LTE Advanced Wireless Router

DL-7305

- LTE Speed: CAT6, 300Mbps DL, 50Mbps UL
- LTE Bands: B1/3/5/7/8/20/38/40/41 (Standard)
- 2x External 5dB LTE Antenna
- Wi-Fi Rate:
 - 2.4G 802.11b/g/n, 2x2, 300Mbps
 - 5G 802.11a/n/ac, 2x2, 866Mbps
- Internal Wi-Fi Antenna
- Modem: 256MB Flash, 256MB RAM
- 1x GE WAN/LAN, 3x GE LAN
- 1x VoLTE (Optional)
- 12V/1A Power Adapter
- Support Auto APN, USSD, SMS
- Connect up to 64 Devices
- 3000mAh Battery (Optional)
- 2FF USIM



5G LTE ROUTERS

5G LTE Wireless Router

DL-7310

- 5G Speed: 3.7Gbps DL, 1.2Gbps UL
- LTE Speed: CAT20, 1.6Gbps DL, 200Mbps UL
- 5G/LTE Bands:
 - N1/3/28/41/78 (Customizable)
 - B1/3/7/8/20/38/40/41 (Standard)
- Internal LTE Antenna
- Wi-Fi Rate:
 - 2.4GHz 802.11b/g/n/ax, 4x4, 1200Mbps
 - 5GHz 802.11 a/n/ac/ax 4x4, 2402Mbps
- Internal Wi-Fi Antenna
- 512MB Flash, 1GB RAM
- 1x GE WAN, 1x GE LAN
- 12V/2A Power Adapter
- Support Auto APN, USSD, SMS
- Connect up to 128 Devices
- 4FF USIM



PORTABLE MOBILE WI-FI

4G LTE Mobile Wi-Fi

DL-7101

- LTE Speed: CAT4, 150Mbps DL, 50Mbps UL
- LTE Bands:
 - B1/3/5/7/8/20/38/40/41 (Standard)
- Built-in Internal LTE Antenna
- Built-in Internal Wi-Fi Antenna
- 2.4GHz 802.11b/g/n, 1x1, 150Mbps
- 128MB Flash, 128MB Ram
- 5V/1A USB2.0
- Support Auto APN, USSD, SMS
- Connect up to 11 Devices
- 2FF USIM



PORTABLE MOBILE WI-FI

CAT 4

Smart 4G LTE Wi-Fi Hotspot / USB Modem

PRT7011L

- LTE Speed: CAT4, 150Mbps DL, 50Mbps UL
- LTE Bands: B1/3/5/7/8/38/40 (Standard)
- Built-in Internal LTE Antenna
- Built-in Internal Wi-Fi Antenna: 2.4GHz 802.11b/g/n, 2x2, 300Mbps
- 256MB Flash, 128MB Ram
- Battery 2300mAh
- 5V/1A USB2.0
- Support Auto APN, USSD, SMS
- Connect up to 16 Devices
- 2FF USIM



4G LTE Mobile Wi-Fi

DL-7203E

- LTE Speed: CAT4, 150Mbps DL, 50Mbps UL
- LTE Bands: B1/3/5/7/8/20/38/40/41 (Standard)
- Built-in Internal LTE Antenna
- Built-in Internal Wi-Fi Antenna: 2.4GHz 802.11b/g/n, 2x2, 300Mbps
- 128MB Flash, 128MB Ram
- Battery 5200mAh
- microSD Slot
- 1 x LAN Port
- 5V/2A Micro-USB Power
- 1.2" LCD
- Support Auto APN, USSD, SMS
- Connect up to 16 Devices
- 3FF USIM



4G LTE Mobile Wi-Fi

DL-7202

- LTE Speed: CAT4, 150Mbps DL, 50Mbps UL
- LTE Bands: B1/3/5/7/8/20/38/40/41 (Standard)
- Built-in Internal LTE Antenna
- Built-in Internal Wi-Fi Antenna: 2.4GHz 802.11b/g/n, 2x2, 300Mbps
- 128MB Flash, 128MB Ram
- Battery 3000mAh
- microSD Slot
- 5V/1A Type-C USB2.0
- 1.44" LCD
- Support Auto APN, USSD, SMS
- Connect up to 16 Devices
- 4FF USIM



PORTABLE MOBILE WI-FI

CAT6/ 5G

LTE Mobile Wi-Fi

PRT-7201

- LTE Speed: CAT6, 300Mbps DL, 50Mbps UL
- LTE Bands: B1/3/5/7/8/20/38/40/41 (Standard)
- Built-in Internal LTE Antenna
- Built-in Internal Wi-Fi Antenna:
 - 2.4GHz 802.11b/g/n, 2x2, 300Mbps
 - 5.8GHz 802.11a/n/ac/ax, 2x2, 866Mbps
- 256MB Flash, 256MB Ram
- Battery 3000mAh
- 5V/2A Type-C USB2.0 Power
- LED / 1.44" LCD (Optional)
- Support Auto APN, USSD, SMS
- Connect up to 16 Devices
- 4FF USIM



5G LTE Mobile Wi-Fi

DL-7211

- 5G Speed: 2.77Gbps DL, 1.25Gbps UL
- LTE Speed: CAT13, 391Mbps DL, 150Mbps UL
- 5G/LTE Bands:
 - B1/3/5/7/8/20/38/40/41 (Standard)
 - N1/3/28/41/78 (Customizable)
- Built-in Internal LTE Antenna
- Built-in Internal Wi-Fi Antenna:
 - 2.4GHz 802.11b/g/n, 1x1, 150Mbps
 - 5GHz 802.11g/n/ac, 1x1, 433Mbps
- 256MB Flash, 1GB Ram
- Battery 5000mAh
- 5V/2A Type-C Power
- 2.4" LCD
- Support Auto APN, USSD, SMS
- Connect up to 16 Devices
- 4FF USIM



5G LTE Mobile Wi-Fi

DL-7212

- 5G Speed: 2.77Gbps DL, 1.25Gbps UL
- LTE Speed: CAT16, 391Mbps DL, 150Mbps UL
- 5G/LTE Bands:
 - B1/3/5/7/8/20/38/40/41 (Standard)
 - N1/3/28/41/78 (Customizable)
- Built-in Internal LTE Antenna
- Built-in Internal Wi-Fi Antenna:
 - 2.4GHz 802.11b/g/n/ax, 2x2, 600Mbps
 - 5GHz 802.11g/n/ac/ax, 2x2, 1200Mbps
- 256MB Flash, 1GB Ram
- Battery 5000mAh
- 5V/2A Type-C Power
- 2.4" LCD
- Support Auto APN, USSD, SMS
- Connect up to 16 Devices
- 4FF USIM



WIRELESS

Wi-Fi Router

Wireless AC2600 Dual-Band Gigabit Router

PRC2401U

- Wireless Standards: IEEE 802.11b/g/n; IEEE 802.11 ac/n/a
- Data Rate:
 - 2.4GHz: Up to 800Mbps
 - 5GHz: Up to 1733Mbps
- Antenna Type: 4 Fixed High Gain External Antenna
- Interface:
 - 1x 10/100/1000Mbps WAN/LAN Port
 - 4x 10/100/1000Mbps LAN Port
 - 1x USB Port
- Coverage: Up to 4000 sq. ft. (Indoor)
- Built-in VPN, Dr WiFi, DLNA



Whole Home Mesh Wi-Fi System

PRC2402M

- Wireless Standards: IEEE 802.11b/g/n/a/ac; IEEE 802.11k; IEEE 802.11r
- Data Rate:
 - 2.4GHz: Up to 300Mbps
 - 5GHz: Up to 1733Mbps
- Built-in Internal Wi-Fi Antenna:
 - 2x 2.4GHz Omni Directional Antenna
 - 4x 5GHz Omni Directional Antenna
- Interface:
 - 1x 10/100/1000Mbps WAN/LAN Port
 - 2x 10/100/1000Mbps LAN Port
 - 1x USB Port
- Coverage: Scalable by Multiple Nodes
- Touch-Link Easy Pairing For Guest Wi-Fi
- Seamless Wi-Fi Roaming
- mXtend Mobile APP



Wi-Fi Extender

Dual-Band Wi-Fi AC1200 Extender

DH-5201

- Wireless Standards: IEEE 802.11a/b/g/n/ac Wave 2
- Data Rate:
 - 2.4GHz: Up to 300Mbps
 - 5GHz: Up to 867Mbps
- Antenna Type: 2x External 3 dBi Antenna
- WAN Connection Type:
 - Repeater Mode
 - AP Mode
- Interface: 1x 10/100Mbps Ethernet Port
- Coverage: Up to 1500 sq. ft. (Indoor)



Wi-Fi Extender

PEN1201

- Wireless Standards: IEEE 802.11b/g/n
- Data Rate: 2.4GHz up to 300Mbps
- Antenna Type: 2x Internal 3 dBi Antenna
- WAN Connection Type:
 - Repeater Mode
 - AP Mode
 - Router Mode
- Interface: 2x 10/100Mbps Ethernet Port
- Coverage: Up to 1000 sq. ft. (Indoor)



WIRELESS

Wi-Fi Adapter

AC1300 Wireless USB Adapter

DH-5101U

- Wireless Standards: IEEE 802.11a/b/g/n/ac Wave 2
- Connection Speed:
 - 2.4GHz: Up to 400Mbps
 - 5GHz: Up to 867Mbps
- Antenna Type: Internal 2dBi Antenna
- Connection Type:
 - Client/ AP Mode
- Connect Type: USB 3.0
- Support OS: Windows, MacOS, Linux



AC650 Wireless USB Adapter

DH-5102U

- Wireless Standards: IEEE 802.11a/b/g/n/ac Wave 2
- Connection Speed:
 - 2.4GHz: Up to 200Mbps
 - 5GHz: Up to 433Mbps
- Antenna Type: Internal Antenna
- Connection Type:
 - Client/ AP Mode
- Connect Type: USB 2.0
- Support OS: Windows, MacOS, Linux



AC650 Wireless USB Adapter 6dBi Antenna

DH-5103U

- Wireless Standards: IEEE 802.11a/b/g/n/ac Wave 2
- Connection Speed:
 - 2.4GHz: Up to 200Mbps
 - 5GHz: Up to 433Mbps
- Antenna Type: 6dBi High-Gain Antenna
- Connection Type:
 - Client/ AP Mode
- Connect Type: USB 2.0
- Support OS: Windows, MacOS, Linux



10X
FASTER DATA
TRANSFER
THAN USB 2.0*

*Applicable to DH-5101U only



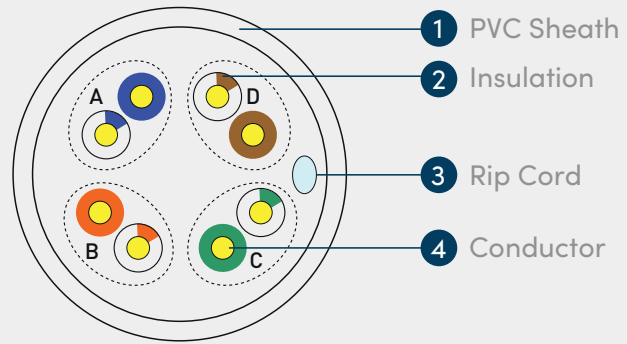
UTP CABLES

HCCA



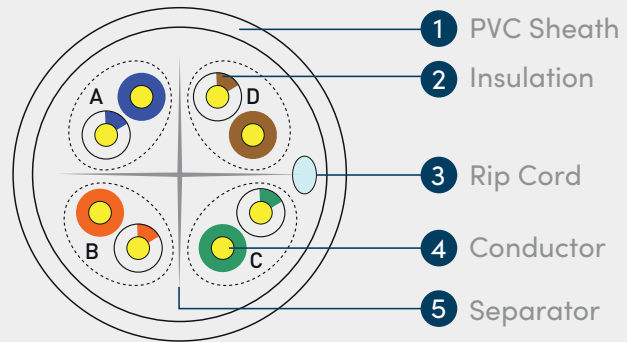
Cat5E 24P Plus Series

- Transmission Bandwidth: 100MHz
- 4 Pairs Unshielded Twisted Pair (UTP) Cable
- Conductor Metal: HCCA
- Conductor Diameter: 0.51mm Nominal, 24 AWG
- Insulation Diameter: 0.93 Nominal
- Fluke Test Passed



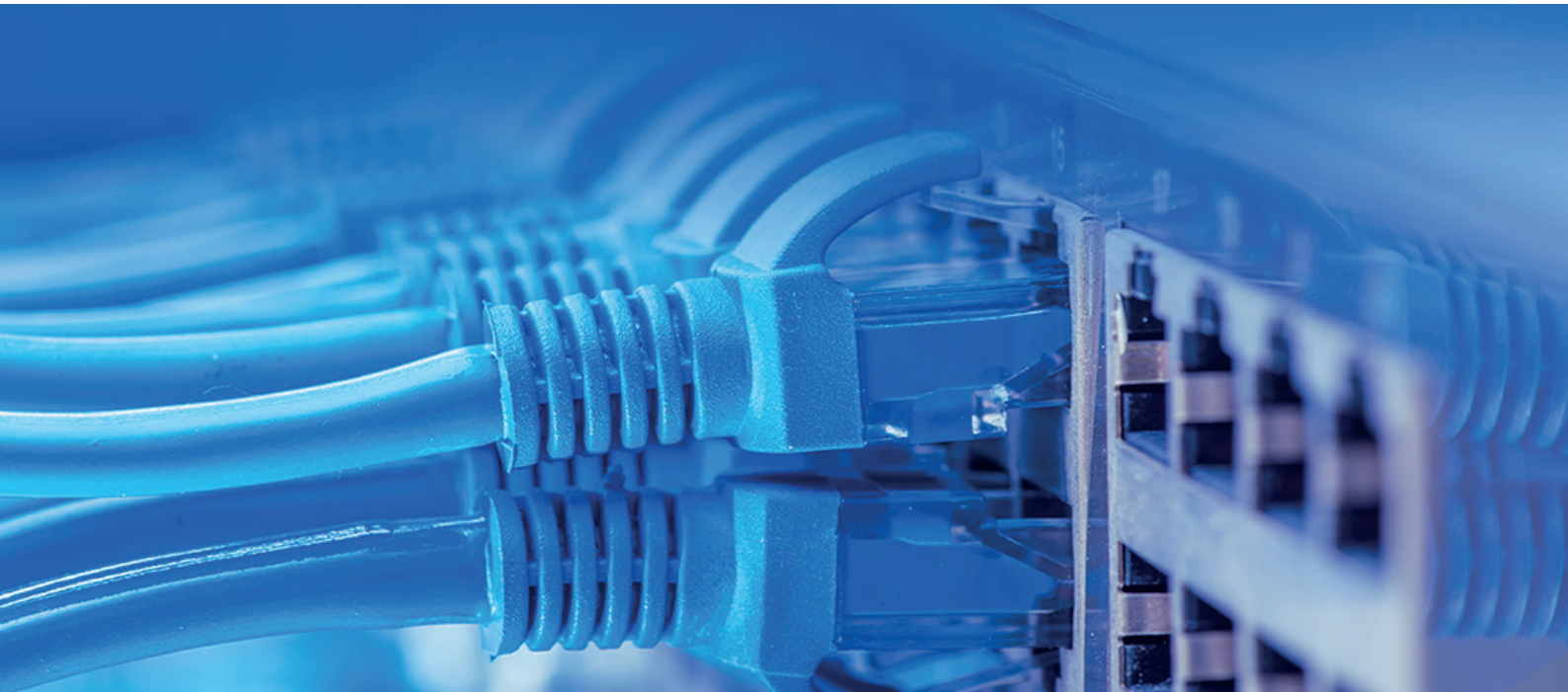
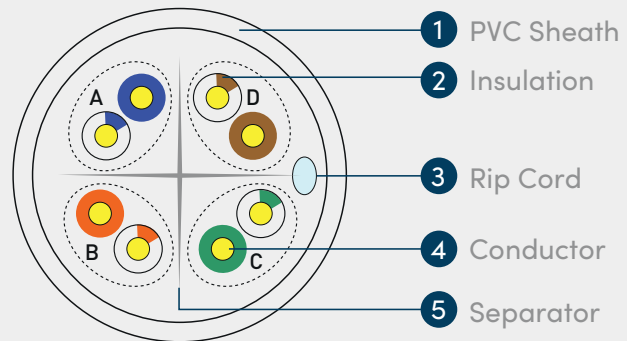
Cat6 23E Essential Series

- Transmission bandwidth: 250MHz
- 4 Pairs Unshielded Twisted Pair (UTP) Cable
- Conductor Metal: HCCA
- Conductor Diameter: 0.57mm Nominal, 23 AWG
- Insulation Diameter: 0.95 Nominal
- Fluke Test Passed



Cat6 23P Plus Series

- Transmission bandwidth: 250MHz
- 4 Pairs Unshielded Twisted Pair (UTP) Cable
- Conductor Metal: HCCA
- Conductor Diameter: 0.56mm Nominal, 23 AWG
- Insulation Diameter: 0.93 Nominal
- Fluke Test Passed



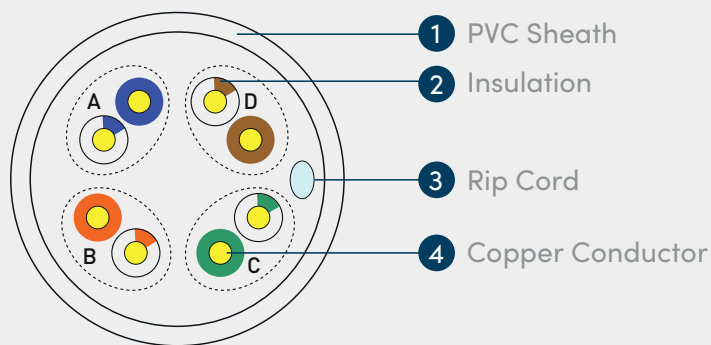
UTP CABLES

Copper



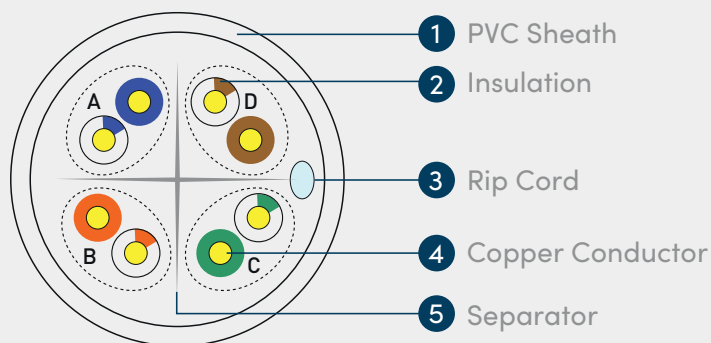
Cat5E 24M Premier Series

- Transmission Bandwidth: 100MHz
- 4 Pairs Unshielded Twisted Pair (UTP) Cable
- Conductor Metal: Solid Bare Copper
- Conductor Diameter: 0.50mm Nominal, 24 AWG
- Insulation Diameter: 0.88 Nominal
- Fluke Test Passed



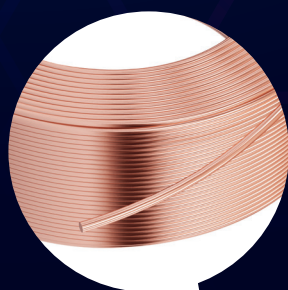
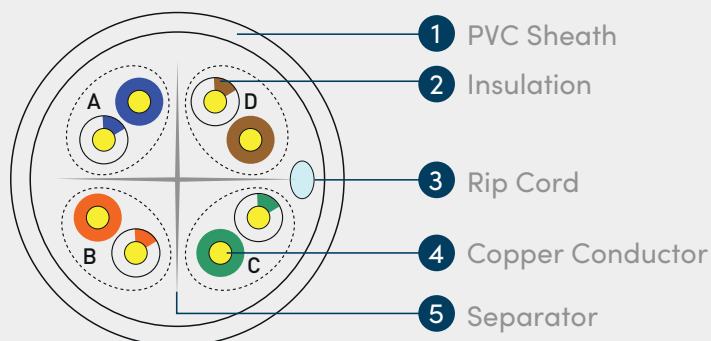
Cat6 24M Premier Series

- Transmission bandwidth: 250MHz
- 4 Pairs Unshielded Twisted Pair (UTP) Cable
- Conductor Metal: Solid Bare Copper
- Conductor Diameter: 0.50mm Nominal, 24 AWG
- Insulation Diameter: 0.88 Nominal
- Fluke Test Passed



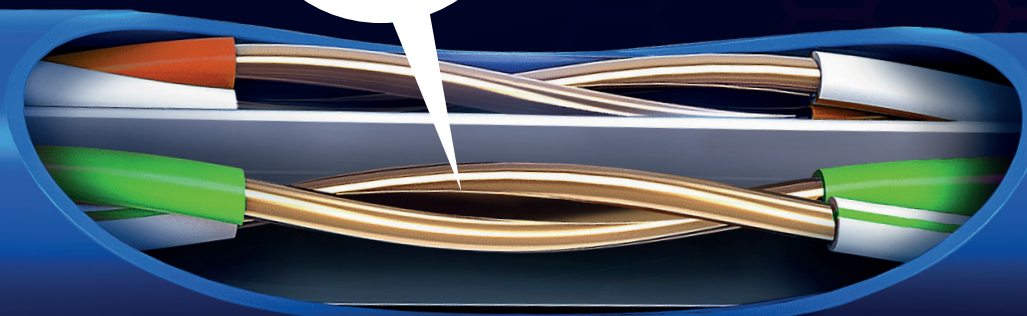
Cat6 23M Premier Series

- Transmission bandwidth: 250MHz
- 4 Pairs Unshielded Twisted Pair (UTP) Cable
- Conductor Metal: Solid Bare Copper
- Conductor Diameter: 0.53mm Nominal, 23 AWG
- Insulation Diameter: 0.94 Nominal
- Fluke Test Passed



OFC oxygen free copper

Solid bare copper conductor make cable have stable transmission signal and stable performance.



About Us

OUR STORY

Looking back...

We were first established in 1991. Since then, we've been providing digital solutions for all aspects of life—from gadgets to uninterrupted power supply to data communication.

Our brand is for everyone and the goal is to continue providing easy plug-and-play solutions for everyday needs, in a simple, enjoyable way. Our customers deserve the best, and we're dedicated to providing that care and personal touch that make their lives just that little bit more effortless.

Looking forward...

Today and for the foreseeable future; the messy, busy and confusing world needs some real thoughtfulness and innovation. Life is too short to fuss. You don't have the time to figure it all out. If you want life to be easier, we, at Prolink, understand this. We make it so you don't have to try so hard. Life should be simple, easy and fun, and this is what drives us to think of better and easier ways to do things. That's why our brand promise to our customers is this: we are here to help you 'connect your life'.



OUR MISSION

Accentuate the best for the e-generation

Prolink aspires to accentuate the best for the e-generation. With technology becoming an essential aspect of modern living, the e-generation concept has gradually become ingrained in our lives and digital literacy is becoming more and more commonplace.

Prolink products are designed to make technology work for the e-generation. Created with the end-user in mind, our products are crafted to enhance performance whether you are at work or play – our products work harder, while you work smarter to achieve your desired results with less effort and better efficiency.

