

STEP
2

Cluster Pole Kit Assembly

3-Balloon & 5-Balloon



Please inflate all balloons within 30 days of purchase to comply with Warranty Guidelines.

WHAT YOU'LL NEED

3 - BALLOON KIT

See Step ①



Inflated Balloon,
Cup & Stem Assembly
(X3 Total)



Cluster Monkey

Cluster Pole
(1 Bracket)



OR



Attach Cluster Brackets

(*If not pre-assembled)

Orient pole with bottom push-button closest to the ground. Slide bracket over top of pole with ports facing upward. Press push-button in slightly and lock bracket into place.

5 - BALLOON KIT

See Step ①



Inflated Balloon,
Cup & Stem Assembly
(X5 Total)



Cluster Monkey
(X2 Total)

Cluster Pole
(2 Brackets)



Attach Cluster Brackets

(*If not pre-assembled)

Orient pole with bottom push-button closest to the ground. Slide top bracket over top of pole with ports facing upward. Press push-button in slightly and lock bracket into place. Repeat with bottom bracket from bottom of pole.

IMPORTANT Complete step 1 on separate card before beginning the hardware assembly steps below.

*5 Balloon Cluster Kit pictured

2.1

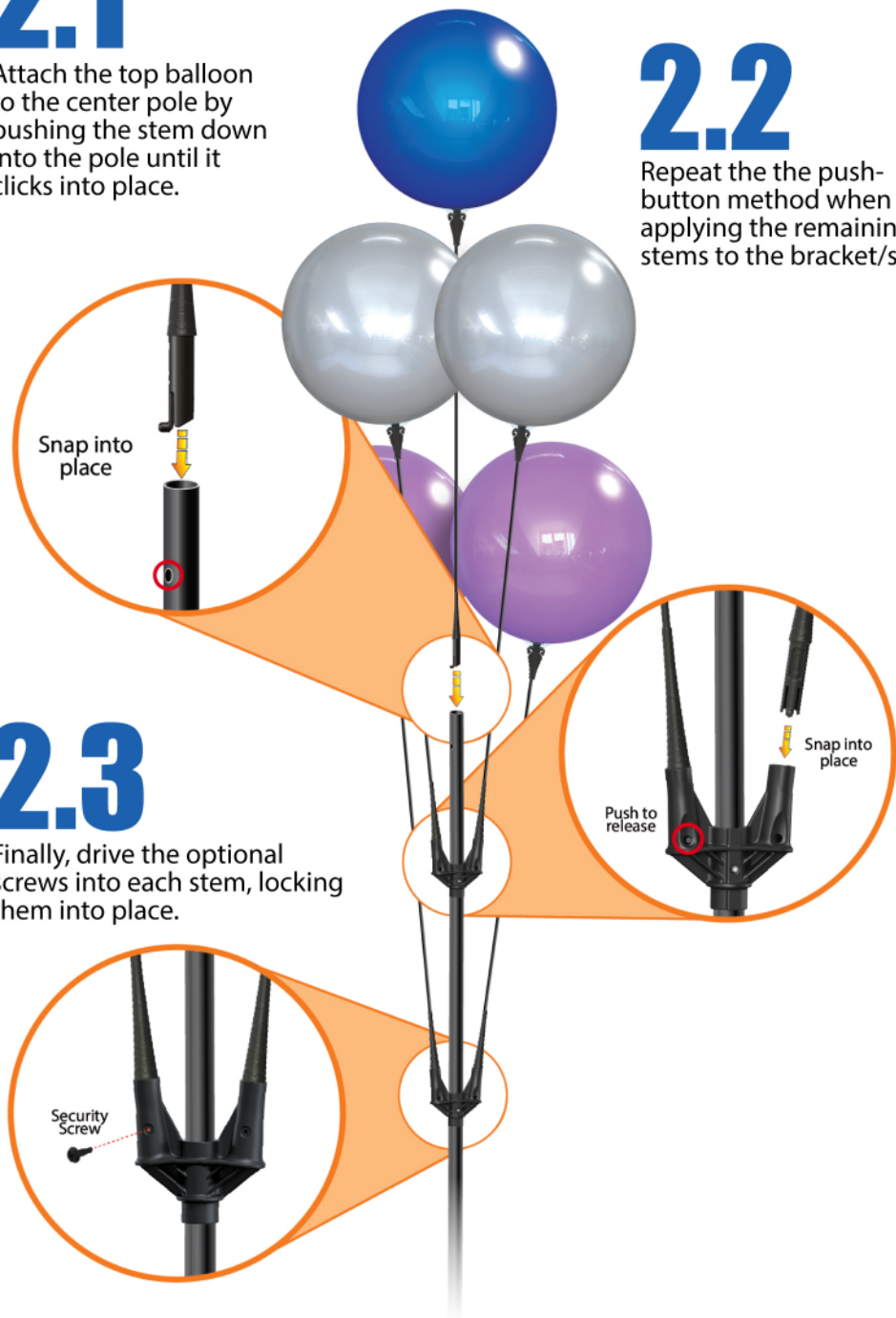
Attach the top balloon to the center pole by pushing the stem down into the pole until it clicks into place.

2.2

Repeat the the push-button method when applying the remaining stems to the bracket/s.

2.3

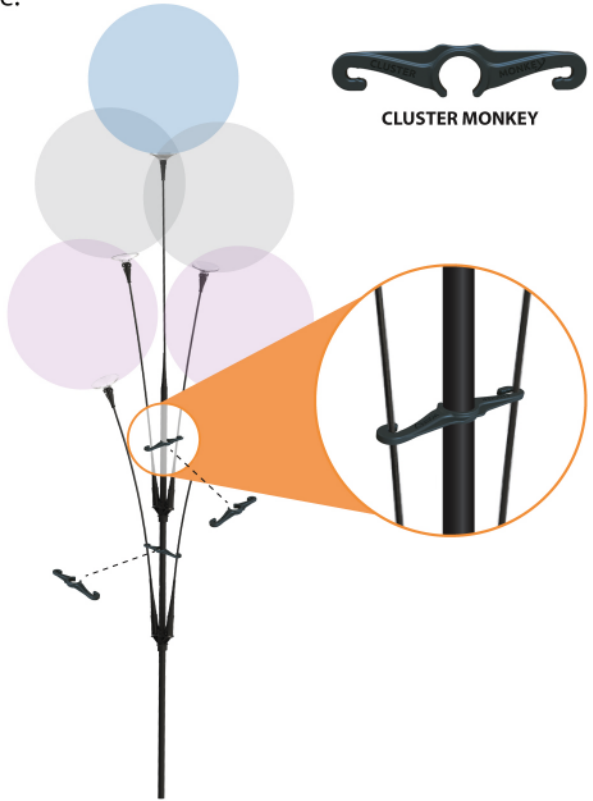
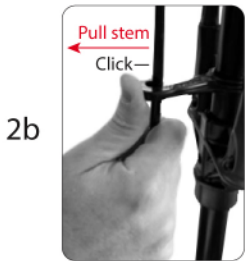
Finally, drive the optional screws into each stem, locking them into place.



2.4

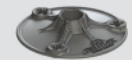
Attach the Cluster Monkey(s) to the pole by bending the arms back so the opening can fit around the pole as shown in image 2a. Push the stems towards the pole and place the stem in the arm opening. Then, pull the stem into the arm opening until it clicks in tightly as shown in image 2b. Repeat with each stem excluding the top stem. This will ensure the tightest cluster possible.

NOTE: Slide Cluster Monkey higher on stems to adjust tightness of balloon cluster and reduce rub marks that may occur over time.



2.5

Assemble your chosen mounting option shown below using Step ③ to complete your Cluster Pole Kit.



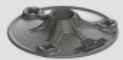
MEGAPLATE KIT WITH STAKE



STAKEMATE KIT



BAND CLAMP or SCREW POLE BRACKETS



MEGAPLATE KIT WITH SPIKE



WEIGHTED BASE



FOLD-OUT BASE