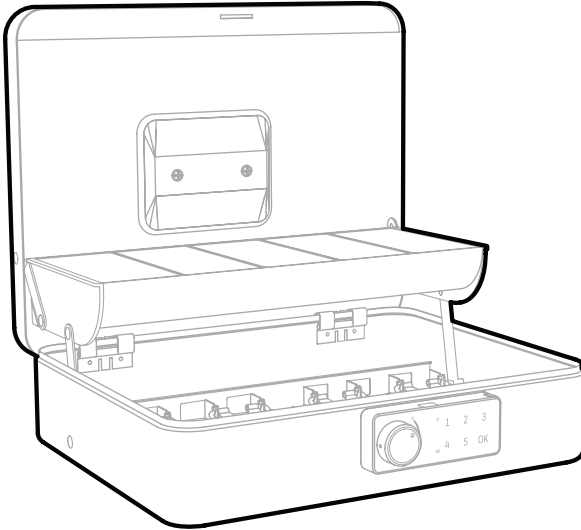


User Guide

Digital Tiered Cash Box



Models 6213DG

Package Includes:



Deluxe Tiered
Digital Cash Box



Operation
Manual



Emergency
Entry Keys



Access Pin

Please carefully check the above list to confirm all items have been received.
If any items are missing, please contact Consumer Assistance (see page 9 for contact information).

Read this manual carefully and never store it inside the safe!

DO NOT RETURN CASH BOX TO STORE

If you are missing parts or have difficulty operating your Digital Tiered Cash Box, please contact our Consumer Assistance Department by telephone. Stores will not accept returned products without prior authorization. You must first contact our Consumer Assistance Department (see page 9 for contact information).

CASH BOX IDENTIFICATION RECORD

Cash Box Model # _____

Cash Box Serial # _____

Override Access Key # _____

Entry Key # _____

User Code _____

PRODUCT REGISTRATION

Please go to the following webpage to register your product:
www.hymaninc.com/product-registration/

INDEX

WELCOME / PROPER CASH BOX USE / CARE AND MAINTENANCE	PAGE 3
SETUP & OPERATION / TEST DIGITAL LOCK / PROGRAM A NEW MANAGEMENT PASSCODE	PAGE 4
PROGRAM A NEW PASSCODE / TURN ON PUBLIC MODE / TURN OFF PUBLIC MODE	PAGE 5
FAKE PIN CODE FUNCTION / TO UNLOCK THE CASH BOX / TO LOCK THE CASH BOX	PAGE 6
OPEN CASH BOX WITH OVERRIDE KEY	PAGE 7
ORDERING ADDITIONAL OVERRIDE ACCESS KEYS / LOCATING CASH BOX IDENTIFICATION NUMBERS	PAGE 8
CONSUMER ASSISTANCE.....	PAGE 9
WARRANTY INFORMATION.....	PAGE 10

WELCOME

Your Honeywell Cash Box will provide years of safe and secure protection for your valuables, important documents and other personal items. All Honeywell safes are designed and built using the highest manufacturing standards to ensure maximum user satisfaction under a variety of conditions. With proper care, your Honeywell cash box will provide peace of mind for many years to come.

Thank you and enjoy!

PROPER CASH BOX USE

Honeywell Digital Steel Security Cash Boxes are designed to protect important documents, funds, digital media files and other valuables from theft and tampering.

CARE AND MAINTENANCE

When properly maintained, your Cash Box will continue to operate for many years. In order to ensure optimum performance of your Cash Box, please follow these simple precautions:

CLEAN HANDS - Never attempt to operate the digital keypad if your hands have excessive dirt, debris or liquids on them.

CLEAN CASH BOX – To clean the surface of your Cash Box, it is recommended that you use a mild cleaner (e.g., window cleaner) to avoid scratching or discoloring the surface. Always wipe dry and NEVER use abrasive cleansers on the cash box or digital keypad.

SETUP AND OPERATION

INSTALL BATTERY

1. Open battery compartment. Using fingernail, remove sliding battery compartment (Figure 1). Requires Lithium battery CR2032 (not included).
2. Insert the battery negative side facing out (Figure 2).
3. Re-insert battery compartment. Both the unlock and battery indicators will flash (Figure 3).

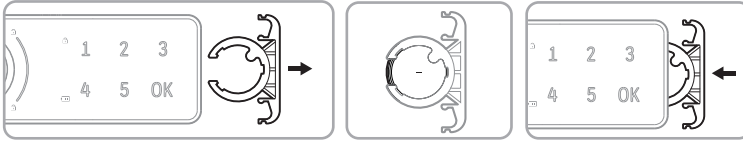


Figure 1

Figure 2

Figure 3

TEST DIGITAL LOCK

1. With lid open, turn knob left to put locking lid latch in lock position (Figure 1).
NEVER STORE KEYS INSIDE CASH BOX!
2. Enter the preset pass code: "1"- "2"- "3"- "4" + OK (Figure 2).
3. Turn knob to right within 2 seconds (Figure 3).
4. Lock should recede into the unlocked position.

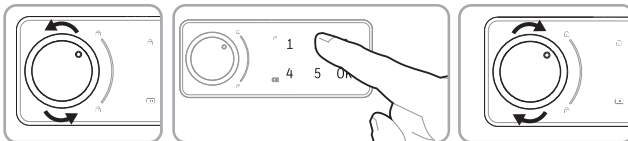


Figure 1

Figure 2

Figure 3

PROGRAM A NEW MANAGEMENT PASSCODE

1. Input current management code "4"- "3"- "2"- "1" + OK. Tone will sound a long beep and a green unlock indicator light will flash quickly and then stay lit (Figure 1).
2. While the unlock button is lit, quickly press the OK button and hold it for at least 2 seconds; the unlock indicator light will flash.
3. Input your desired access code; press OK. When you hear a long beep the management passcode is set.

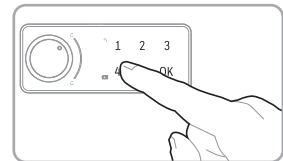


Figure 1

NOTE: Password can be 4-15 digits.

Warning: There is no reset button; please write down your code.

PROGRAM A NEW PASSCODE

1. Input current access code "1"- "2"- "3"- "4" + OK.
Tone will sound a long beep and a green unlock indicator light will flash quickly and then stay lit (Figure 1).
2. While the unlock button is lit, quickly press the OK button and hold it for at least 2 seconds; the unlock indicator light will flash.
3. Input your desired access code; press OK.
When you hear a long beep the access code is set.

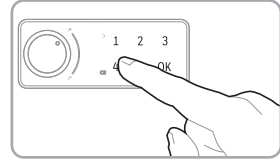


Figure 1

Warning: There is no reset button; please write down your code.

NOTE: Password can be 4-15 digits.

TURN ON PUBLIC MODE

1. Input current management passcode + OK. Tone will sound a long beep and a green unlock indicator light will flash quickly and then stay lit.
2. While the unlock button is lit, quickly press the OK button and hold it for at least 2 seconds. The unlock indicator light will flash.
3. Press the OK button again.
4. Input "4 4"; press OK. When you hear a long beep public mode will be active.

Set a temporary passcode

1. Press the OK button. The unlock indicator light will flash quickly.
2. Input a new passcode.
3. Press OK to unlock. When you hear a long beep the temporary code is set.

NOTE: Temporary passwords can only be used one time.

TURN OFF PUBLIC MODE

1. Input current management passcode + OK. Tone will sound a long beep and a green unlock indicator light will flash quickly and then stay lit.
2. While the unlock button is lit, quickly press the OK button and hold it for at least 2 seconds. The unlock indicator light will flash.
3. Press the OK button again.
4. Input "4 3"; press OK. When you hear a long beep public mode will be deactivated.


FAKE PIN CODE FUNCTION

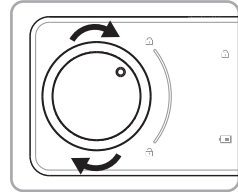
TURN ON/OFF FAKE PIN CODE FUNCTION

1. Input current management passcode + OK. Tone will sound a long beep and a green unlock indicator light will flash quickly and then stay lit.
2. While the unlock button is lit, quickly press the OK button and hold it for at least 2 seconds. The unlock indicator light will flash.
3. Press the OK button again.
4. Input "4 2", press OK. When you hear a long beep fake pin function will be active.
Or Input "4 1"; press OK. When you hear a long beep sound fake pin function will be deactivated.

NOTE: With a fake PIN you can input any code(s) before or after the real passcode to prevent the real passcode from being compromised. Maximum 16 digits.


TO UNLOCK THE CASH BOX

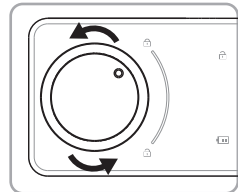
1. Enter your access code XXXX+OK.
2. Tone will sound a long beep and a green unlock indicator light will turn on. 
3. Turn knob 90 degrees clockwise within the 3 second window to open the lock.



TO LOCK THE CASH BOX

1. Turn the knob back 90 degrees counter-clockwise to lock position.

**NOTE: When access code is wrong a tone will sound and beep 3 times.
When lock shows this signal, means low battery. **



OPEN CASH BOX WITH OVERRIDE KEY

1. To use override key, safe must be in the locked position. Remove override key cover with access pin. Locate hole on left side of the knob. Carefully place pin into the hole, and gently push pin back towards cash box to remove cover (Figure 1).
2. Insert override key and turn right to unlock cash box (Figure 2).
3. Re-insert override key and turn back to the left to lock the cash box (Figure 3).
4. Carefully reinstall cap. Align cap dot with the word "Lock" as shown (Figure 4).

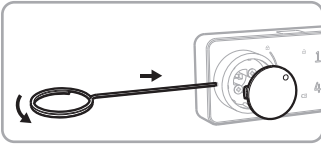


Figure 1

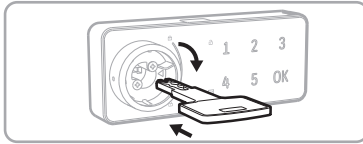


Figure 2

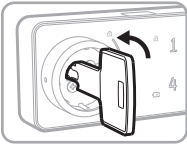


Figure 3

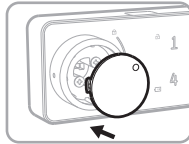


Figure 4

ORDERING ADDITIONAL OVERRIDE ACCESS KEYS

The following information is required to obtain a Key:

1. PROOF OF OWNERSHIP (1 of 2 Options Below):

SALES RECEIPT & IDENTIFICATION - INTERNATIONAL ORDERS ONLY!

- Copy of sales receipt showing Store, Date & Product Description.
- Copy of your picture I.D. (Drivers license, passport, regular I.D.).

PRODUCT OWNERSHIP VERIFICATION FORM

If sales receipt is not available, contact us by email or telephone to request a "Product Ownership Verification Form".

2. CONTACT & PRODUCT INFORMATION

CONTACT INFORMATION

- Name & Mailing Address
- E-mail address (If Available)
- Telephone Number
- Best Time to Contact You

PRODUCT INFORMATION

- Cash Box Model #
- Cash Box Serial #

3. METHOD OF PAYMENT

- Telephone: Visa or MasterCard
- Mail: Check or Money Order

NOTE: For pricing please contact Consumer Assistance. Contact information is located on the back cover of this manual.

Terms subject to change without prior notification.

LOCATING CASH BOX IDENTIFICATION NUMBERS

SERIAL NUMBER

Located on lower right corner on the digital lock (Figure 1)

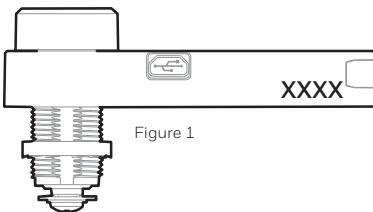


Figure 1

KEY NUMBER

2 Digit Number engraved on the Key (Figure 2).



Figure 2

CONSUMER ASSISTANCE

EMAIL: LHLPCustomerService@LHLPinc.com

WEBSITE: www.honeywellsafes.com

ADDRESS: Consumer Assistance Dept.
LH Licensed Products, Inc.
860 East Sandhill Avenue
Carson, CA 90746 USA

TELEPHONE: US/Canada 1-877-354-5457 (Toll Free)
Mexico 01-800-288-2872 After English voice
recording stops you must then enter 800-860-1677
to complete your call. (Toll Free)Australia
0011-800-5325-7000 (Toll Free)
Germany/New Zealand 00-800-5325-7000 (Toll Free)
Other Countries XX*-310-323-5722 (Toll Charges Apply)
XX*- Dial U.S. Country Code first

CALL CENTER HOURS: US/Canada 7am - 5pm (PST**) Mon - Fri
CALL BACK HOURS: Other Countries 7am -8pm (PST**) Mon - Fri
PST**- Local time in Los Angeles, CA, USA

INTERNATIONAL CALL BACK HOURS:

If you need to speak with a consumer assistant and cannot contact us during the Call Center hours above, please send an email or leave a telephone message, including your Name, Telephone Number and the best time for us to contact you during the Call Back hours above and we will make every effort to contact you and help answer any of your questions or concerns.

* Insert correct Country Code

** Local Time based on Los Angeles California USA

LIMITED WARRANTY

LH Licensed Products, Inc., (“LHLP, Inc.”) warrants that for a period of five (5) years from the date of purchase, this product will be free from structural or mechanical defects resulting from materials or workmanship. LHLP, Inc., at its sole option and as the purchaser’s sole remedy under this warranty, will repair or replace this product or any component of the product found to be defective during the warranty period. Replacement or repair will be made with a new or remanufactured product or component. If the product is no longer available, replacement may be made with a similar product of equal or greater value.

THIS IS YOUR EXCLUSIVE WARRANTY.

Our goods come with guarantees that cannot be excluded under the Australian Consumer Law. You are entitled to a replacement or refund for major failure and for compensation for any other reasonably foreseeable loss or damage. You are also entitled to have the goods repaired or replaced if the goods fail to be of acceptable quality and the failure does not amount to a major failure.

This warranty is only valid for the original retail purchaser from the date of initial retail purchase and is not transferable. You must keep the original sales receipt. Proof of purchase is required to obtain warranty service.

LHLP, Inc. dealers, service centers, or retail stores selling this product do not have the right to alter modify or in anyway change the terms and conditions of this warranty.

This warranty does not apply to the finish on the product. This warranty does not cover normal wear and tear of parts or damage resulting from any of the following: negligent use or misuse of the product, use contrary to the operating instructions, disassembly, repair or alteration by anyone other than LHLP, Inc. Or an authorized service center, improper installation, or exposure to extremes of heat or humidity. Further, the warranty does not cover Acts of God, such as fire, flood, earthquakes, hurricanes and tornadoes.

LHLP, Inc. shall not be liable for any incidental or consequential damages caused by the breach of any express or implied warranty or otherwise relating to the sale of this product. LHLP, Inc. is also not responsible for : costs associated with removing or installing the product; damage or loss of the contents of the product; nor for the unauthorized removal of the contents; or damages incurred during shipment.

THE ABOVE WARRANTY IS IN LIEU OF ALL OTHER WARRANTIES, EXPRESS OR IMPLIED, INCLUDING ANY WARRANTIES OF MERCHANTABILITY OF FITNESS FOR A PARTICULAR PURPOSE, AND LHLP, INC. DISCLAIMS ANY AND ALL OTHER COVENANTS AND WARRANTIES.

Except to the extent prohibited by applicable law, and implied warranty of merchantability or fitness for a particular purpose is limited in duration to the duration of the above warranty period. Some states, provinces or jurisdictions do not allow the exclusion or limitation of incidental or consequential damages or limitations on how long an implied warranty, lasts, so the above limitations or exclusion may not apply to you. This warranty gives you specific legal rights, and you may also have other rights that vary from state to state, or province to province, or jurisdiction to jurisdiction.

LIFETIME AFTER-FIRE REPLACEMENT GUARANTEE

If this Honeywell fire resistant product was purchased from LH Licensed Products, Inc. (“LHLP”) and is damaged by fire at any time while still owned by you (the original owner), LHLP will ship a free replacement if you send the following to Customer Service, LH Licensed Products, Inc., 860 E. Sandhill Ave., Carson, CA 90746 USA:

1. Your name, mailing address, email address, and phone number with area code;
2. A description of the fire, the model number and a photo of the burned unit, and a copy of the report from the fire department, insurance or police.

Freight on the replacement unit is not included in the guarantee and must be paid by the consumer. If an identical product is no longer available, LHLP will provide a similar unit from its current product line. LHLP is not responsible for any loss or damage to the contents of the safe.



Manufactured by:
LH Licensed Products, Inc.
860 East Sandhill Avenue
Carson, CA 90746
M6213DG E V5

The Honeywell Trademark is used under license from Honeywell International Inc. Honeywell International Inc. makes no representations or warranties with respect to this product.

www.honeywellsafes.com