

CERTIFICATE OF ANALYSIS

PRODUCT IDENTIFICATION

CLIENT: Spectrums Europe SAS

PRODUCT NAME: PCR Soft Gels 25mg with 10mg Curcumin

BATCH: SL-20-SG25 C-01

PHYSICO-CHEMICAL ANALYSIS

Quantitative Analysis (HPLC and/or GC/MS) :

HPLC Agilent 1220

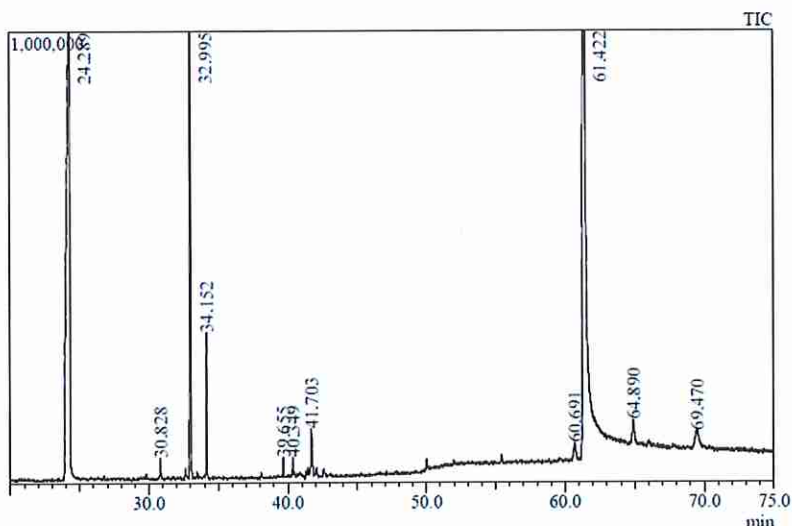
Analyte	Method	LOD %	LOQ %	Mass %	Mass mg
CBD	HPLC-LEAF04	0.0001	0.0004	3.7413	23.8
Δ9-THC	HPLC-LEAF04	0.0025	0.0100	NQ	NQ

ND : not detected – NQ : not quantified

As part of an analysis of plant sample, in HPLC, a preliminary decarboxylation step is necessary during the preparation of the sample in order to transform all the cannabinoids present in acid form into their decarboxylated form.

Composition Analysis (GC/MS) : (analysis of 8th September, 2020)

GC/MS Shimadzu QP 2010 SE



#Peak	Ret.Time min	Area %	Name	Type of compound
2	30.828	0.15	Copaene <alpha->	Terpene
3	32.995	22.01	Caryophyllene	Terpene
4	34.152	1.10	Humulene <alpha->	Terpene
5	39.655	0.13	Bulnesol	Terpene
6	40.349	0.11	Eudesmol <epi-gamma->	Terpene
7	41.703	0.48	Bisabolol <epi-alpha->	Terpene
9	61.422		Cannabidiol (CBD)	Cannabinoid
10	64.890	0.43	Cannabielsoin (CBE)	Cannabinoid

Compounds that are not terpenes, cannabinoids or hormones (15.65%) are not included in the statement of compounds because they are not relevant to the desire analysis.

Written on : 2nd October, 2020

Validated on : 2nd October, 2020

By : Anne-Karine GROSDÉMANGE

By : Elie DOPPELT

QC Manager – Chemical Analysis Engineer

President

S.A.S LEAF
 AU CAPITAL DE 15 000 €
 31/33 RUE DU 8 MAI 1945
 94470 BOISSY SAINT LEGER
 TEL : 01.43.39.15.23
 E-mail : contact@lab-leaf.com
 RCS CRETEIL 818 276 651