

Features

- Mess free
- Super light
- Vibrant colors
- Easy mixing
- Super moldable
- Strong elasticity
- Air dry
- Non toxic
- Gluten free
- Dries overnight
- Instructions inside



www.scentcoinc.com
8640 Argent Street
Santee, CA 92071

Designed in California.
Made in Luohe City, China.
Non-Toxic
AD2014-1973-08/18

Conforms to ASTM D4236
and EN-71 Standards.
DKL Marketing Ltd
NN3 6QD, UK.

Let's Connect @scentco



**OCEAN
WORLD**

**AIR
DOUGH**

The Lightest
**MODELING
DOUGH**
on Earth!

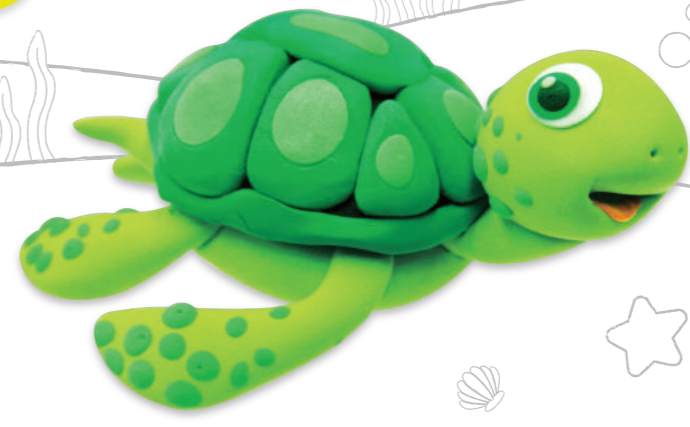
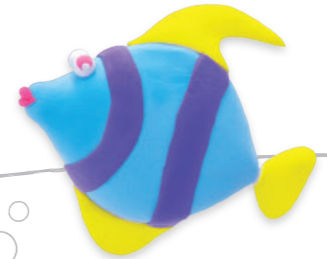
Dries
Over Night

Mess Free

Non-Toxic

Ages 3+

• GLUTEN FREE
• Do NOT Ingest
this product



Instructions



The Lightest **MODELING DOUGH** on Earth!

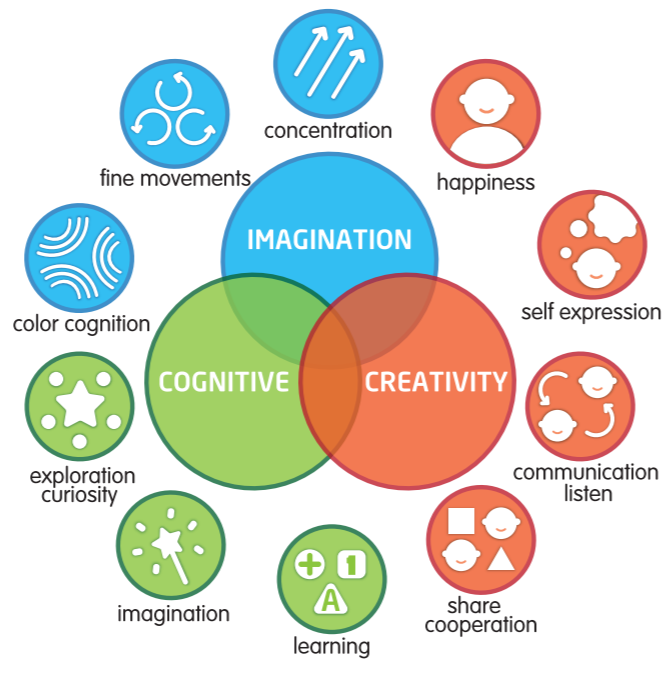


Color Match

- Red + yellow = orange
- Red + black = deep red
- Black + orange = chestnut
- Red + blue = purple
- Yellow + blue = green
- Red + white = pink
- Blue + purple = deep blue
- Yellow + green = pale green

Tips for how to keep the dough from drying

- Use a wet cloth or preservative film to protect the dough from drying.
- If dough surface is left dry for a long period of time, remove the surface layer and knead the dough for a few minutes.
- If the dough loses coloration, add a little water and knead the dough. The color will return back to normal after a few minutes of kneading.



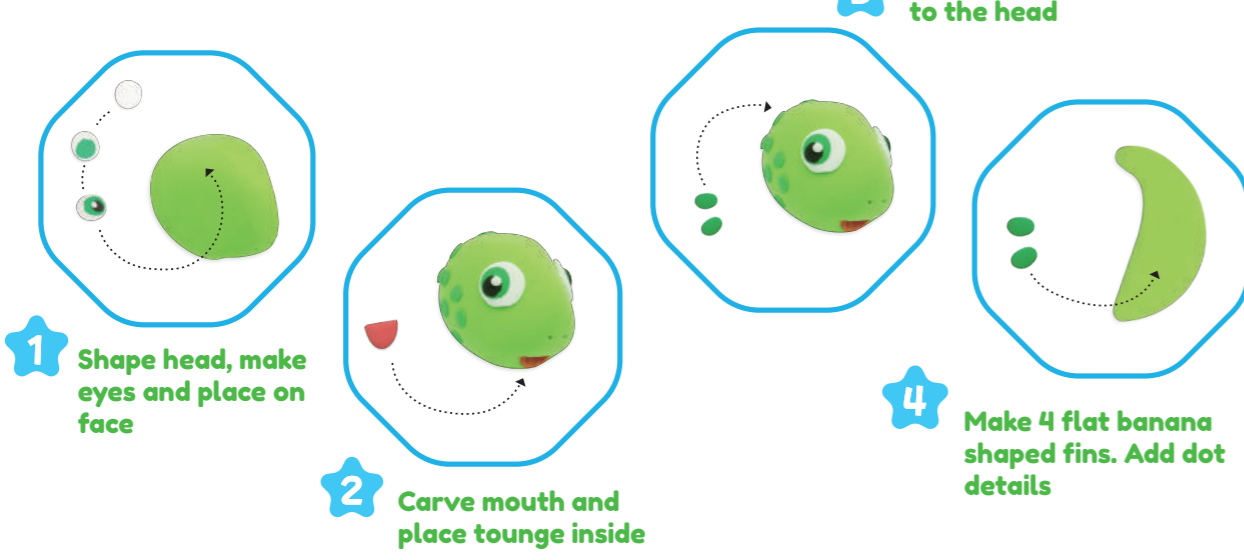
The Lightest **MODELING DOUGH** on Earth!



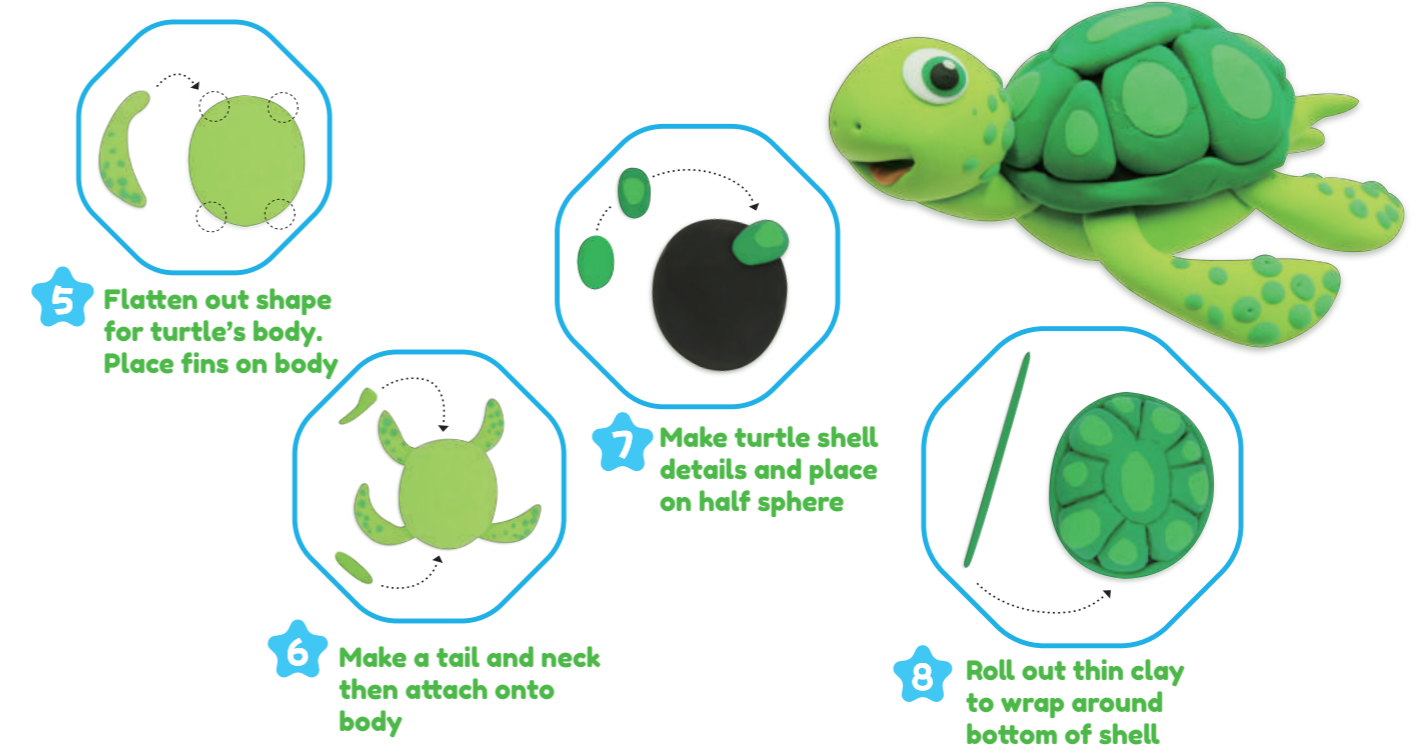
The Lightest **MODELING DOUGH** on Earth!



TURTLE



The Lightest **MODELING DOUGH** on Earth!



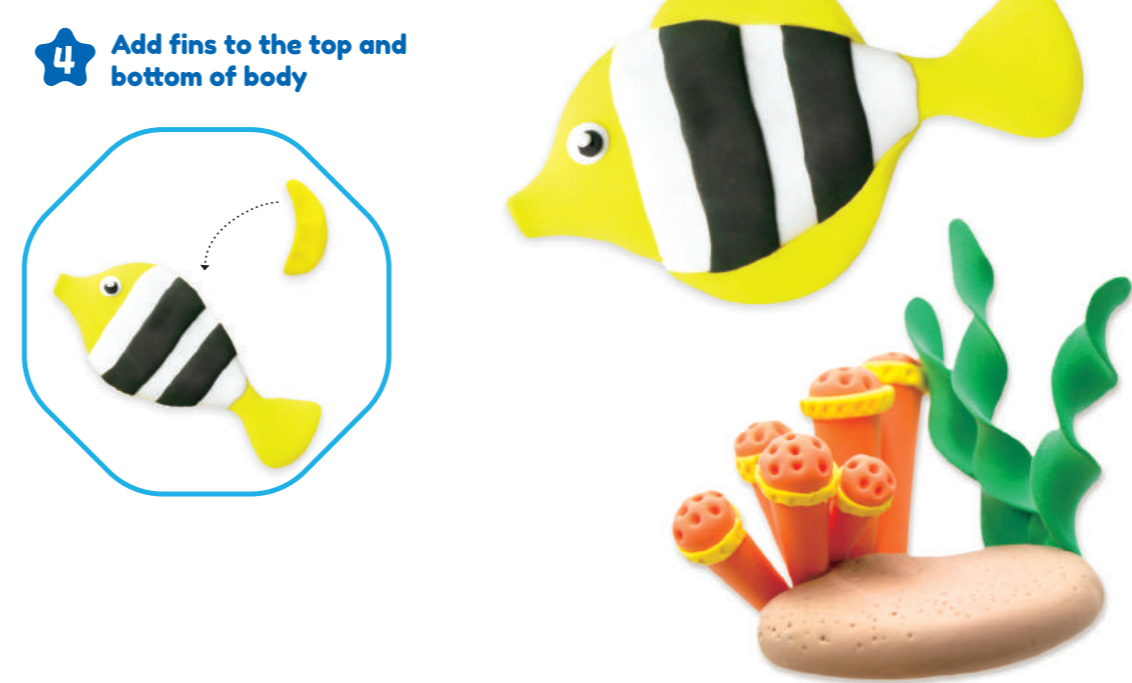
The Lightest **MODELING DOUGH** on Earth!



YELLOW FISH



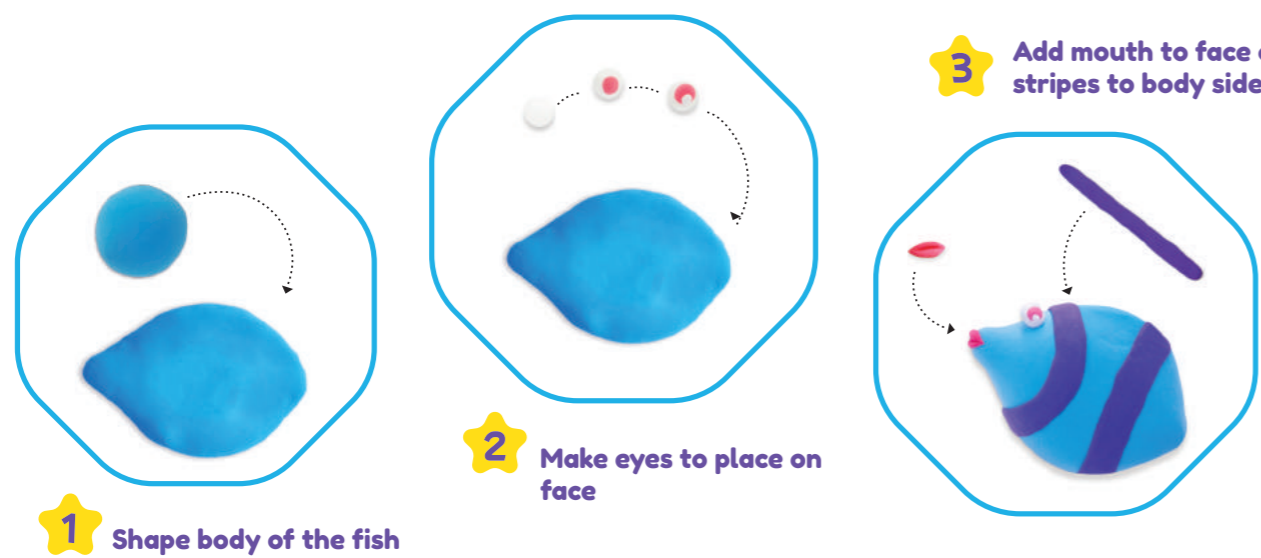
The Lightest **MODELING DOUGH** on Earth!



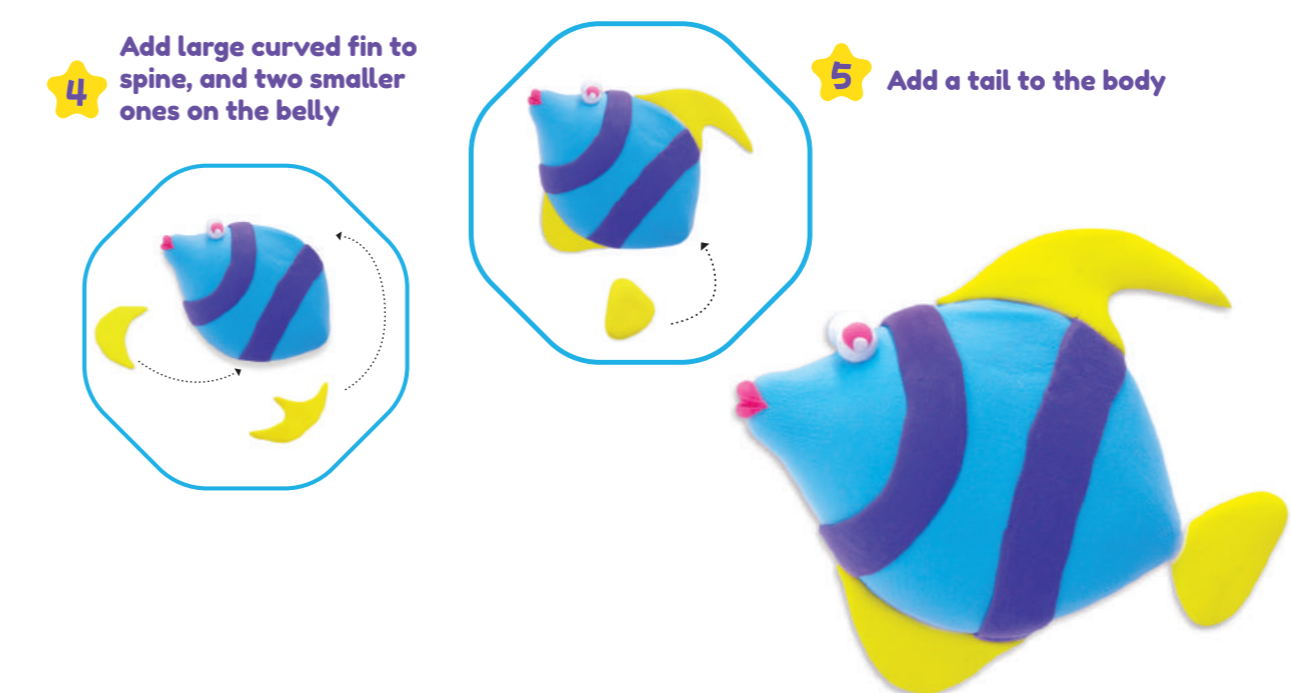
The Lightest **MODELING DOUGH** on Earth!



BLUE FISH



The Lightest **MODELING DOUGH** on Earth!



COLLECT THEM ALL!



COLLECT THEM ALL!

