

# WELCOME.

You just bought a NIXON watch. How about that. Welcome to the NIXON side, a side that's about custom-built product, quality, and durability. We're stoked you selected one of our watches. The fact that you bought a NIXON means you can probably tell time, but you may not be familiar with all the doo-dads and features of our watches. So if you're stuck, read through these instructions. Or get your friends to read them and then they can tell you what's up.



## THE ANALOGS OPERATIONS MANUAL

www.nixon.com

# HOLA.

Acabas de adquirir un reloj NIXON. Bienvenido a NIXON, productos customizados, calidad y durabilidad. Estamos encantado de que hayas escogido uno de nuestros relojes. El hecho de que hayas adquirido un NIXON significa que podras saber la hora pero quizas no estes familiarizado con todas las funciones de nuestros relojes, si es asi lee estas instrucciones. O consuega a un amigo para que se las lea por ti te pueda explicar como va todo.

# WILKOMMEN.

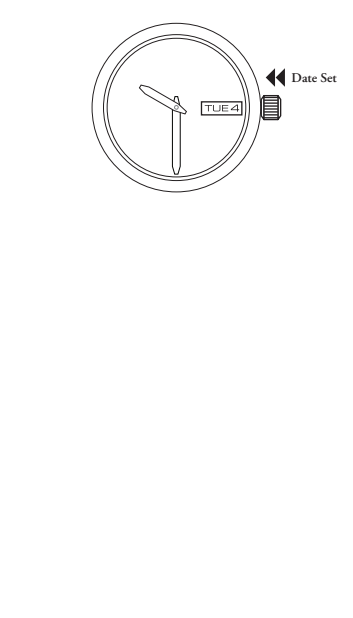
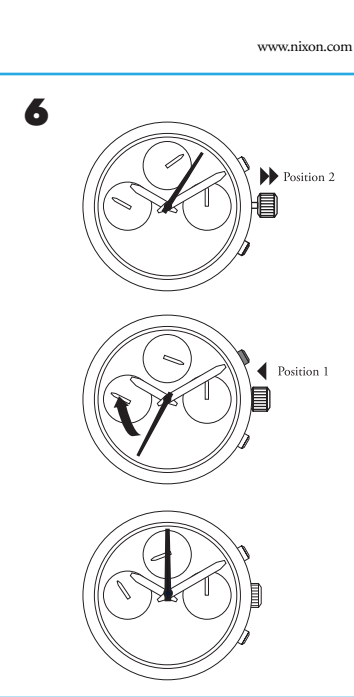
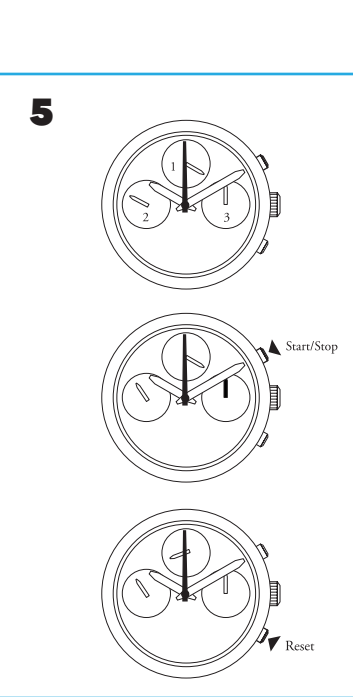
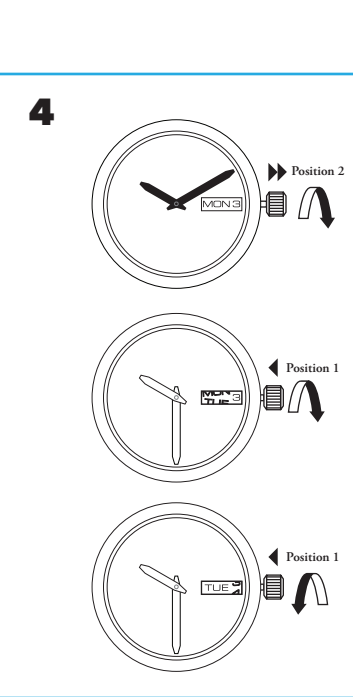
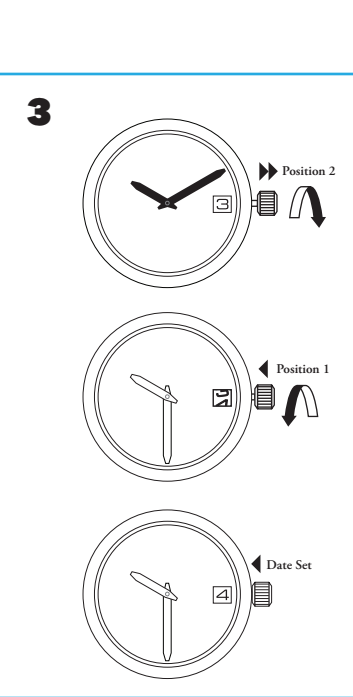
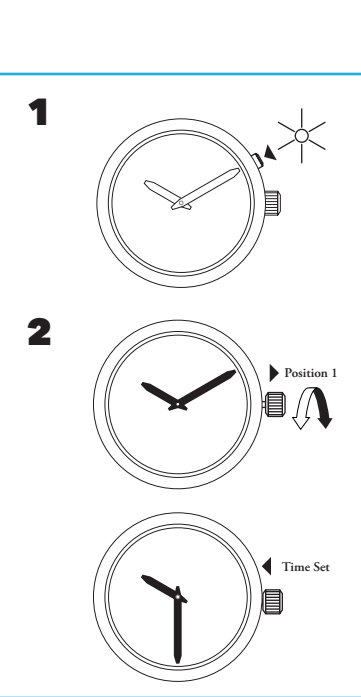
Sie haben sich eben eine NIXON Uhr gekauft. Herzlichen Glückwunsch und willkommen auf der NIXON Seite. Hier dreht sich alles um massgeschneiderte produkte, qualitat und haltbarkeit. Wir freuen uns, dass sie eine unserer uhren ausgewählt haben. Die tatsache, dass sie eine NIXON gekauft haben. Bedeutet, dass sie vermutlich jetzt jemandem die aktuelle uhrezeit sagen koennen. Aber wahrscheinlich sind sie noch nicht mit all den features und funktionen unserer uhren vertraut. Falls sie also mal nicht mehr weiterkommen, lesen sie sich einfach diese anleitung durch. Oder ihre freunde sollen sie lesen. Dann koennen die ihnen sagen wie's funktioniert.

# BIENVENUE.

Vous venez d'acheter une montre NIXON! Alors quoi? Bienvenue chez NIXON, où vous ne trouverez que des montres de longue durée et de qualité, faites sur mesure. Nous sommes très heureux que vous ayez choisi une de nos montres. Si vous avez une NIXON, cela veut probablement dire que vous savez lire l'heure, mais vous ne saurez peut-être pas toutes les petites astuces et caractéristiques de nos montres. Alors, si vous ne savez pas quoi faire, jetez donc un coup d'œil au mode d'emploi, ou demandez un de vos copains de vous le lire afin de vous mettre au jus.

# WELCOME.

このたびはニクソンウォッチをお買い上げいただき、誠にありがとうございます。ニクソンウォッチはカスタマイズにより品質、耐久性を重視しています。恐らく皆様さんにとって時間を視ることはできても、すべての機能や特徴を御理解いただくことは少し困難かもしれません。ご使用前の以下の説明をよくお読みになって、正しくお使い下さい。



## ENGLISH

### 1 OPERATING THE LIGHT

For those watches that have a light, press the light button to use it. Never push a light button or set the watch when it is submerged. Ever. Always make sure the crown is pushed in or screwed down before getting your watch wet.

### 2 SETTING THE TIME

Note: Some watches come equipped with a screw-down crown. The crown must be unscrewed by turning it counter-clockwise before you can pull the crown out.

PULL crown out to position 1. TURN the crown in either direction to adjust the time. PUSH crown all the way back in (make sure it is screwed in if it is a screw crown).

Note: Some watches come equipped with a screw-down crown. The crown must be unscrewed by turning it counter-clockwise before you can pull the crown out.

PULL crown out to position 1. TURN the crown in either direction to adjust the time. PUSH crown all the way back in (make sure it is screwed in if it is a screw crown).

Note: Some watches come equipped with a screw-down crown. The crown must be unscrewed by turning it counter-clockwise before you can pull the crown out.

PULL crown out to position 1. TURN the crown in either direction to adjust the time. PUSH crown all the way back in (make sure it is screwed in if it is a screw crown).

Note: Some watches come equipped with a screw-down crown. The crown must be unscrewed by turning it counter-clockwise before you can pull the crown out.

PULL crown out to position 1. TURN the crown in either direction to adjust the time. PUSH crown all the way back in (make sure it is screwed in if it is a screw crown).

Note: Some watches come equipped with a screw-down crown. The crown must be unscrewed by turning it counter-clockwise before you can pull the crown out.

PULL crown out to position 1. TURN the crown in either direction to adjust the time. PUSH crown all the way back in (make sure it is screwed in if it is a screw crown).

Note: Some watches come equipped with a screw-down crown. The crown must be unscrewed by turning it counter-clockwise before you can pull the crown out.

PULL crown out to position 1. TURN the crown in either direction to adjust the time. PUSH crown all the way back in (make sure it is screwed in if it is a screw crown).

Note: Some watches come equipped with a screw-down crown. The crown must be unscrewed by turning it counter-clockwise before you can pull the crown out.

PULL crown out to position 1. TURN the crown in either direction to adjust the time. PUSH crown all the way back in (make sure it is screwed in if it is a screw crown).

Note: Some watches come equipped with a screw-down crown. The crown must be unscrewed by turning it counter-clockwise before you can pull the crown out.

PULL crown out to position 1. TURN the crown in either direction to adjust the time. PUSH crown all the way back in (make sure it is screwed in if it is a screw crown).

Note: Some watches come equipped with a screw-down crown. The crown must be unscrewed by turning it counter-clockwise before you can pull the crown out.

PULL crown out to position 1. TURN the crown in either direction to adjust the time. PUSH crown all the way back in (make sure it is screwed in if it is a screw crown).

Note: Some watches come equipped with a screw-down crown. The crown must be unscrewed by turning it counter-clockwise before you can pull the crown out.

PULL crown out to position 1. TURN the crown in either direction to adjust the time. PUSH crown all the way back in (make sure it is screwed in if it is a screw crown).

Note: Some watches come equipped with a screw-down crown. The crown must be unscrewed by turning it counter-clockwise before you can pull the crown out.

PULL crown out to position 1. TURN the crown in either direction to adjust the time. PUSH crown all the way back in (make sure it is screwed in if it is a screw crown).

Note: Some watches come equipped with a screw-down crown. The crown must be unscrewed by turning it counter-clockwise before you can pull the crown out.

PULL crown out to position 1. TURN the crown in either direction to adjust the time. PUSH crown all the way back in (make sure it is screwed in if it is a screw crown).

Note: Some watches come equipped with a screw-down crown. The crown must be unscrewed by turning it counter-clockwise before you can pull the crown out.

PULL crown out to position 1. TURN the crown in either direction to adjust the time. PUSH crown all the way back in (make sure it is screwed in if it is a screw crown).

Note: Some watches come equipped with a screw-down crown. The crown must be unscrewed by turning it counter-clockwise before you can pull the crown out.

PULL crown out to position 1. TURN the crown in either direction to adjust the time. PUSH crown all the way back in (make sure it is screwed in if it is a screw crown).

Note: Some watches come equipped with a screw-down crown. The crown must be unscrewed by turning it counter-clockwise before you can pull the crown out.

PULL crown out to position 1. TURN the crown in either direction to adjust the time. PUSH crown all the way back in (make sure it is screwed in if it is a screw crown).

Note: Some watches come equipped with a screw-down crown. The crown must be unscrewed by turning it counter-clockwise before you can pull the crown out.

PULL crown out to position 1. TURN the crown in either direction to adjust the time. PUSH crown all the way back in (make sure it is screwed in if it is a screw crown).

Note: Some watches come equipped with a screw-down crown. The crown must be unscrewed by turning it counter-clockwise before you can pull the crown out.

PULL crown out to position 1. TURN the crown in either direction to adjust the time. PUSH crown all the way back in (make sure it is screwed in if it is a screw crown).

Note: Some watches come equipped with a screw-down crown. The crown must be unscrewed by turning it counter-clockwise before you can pull the crown out.

PULL crown out to position 1. TURN the crown in either direction to adjust the time. PUSH crown all the way back in (make sure it is screwed in if it is a screw crown).

Note: Some watches come equipped with a screw-down crown. The crown must be unscrewed by turning it counter-clockwise before you can pull the crown out.

PULL crown out to position 1. TURN the crown in either direction to adjust the time. PUSH crown all the way back in (make sure it is screwed in if it is a screw crown).

Note: Some watches come equipped with a screw-down crown. The crown must be unscrewed by turning it counter-clockwise before you can pull the crown out.

PULL crown out to position 1. TURN the crown in either direction to adjust the time. PUSH crown all the way back in (make sure it is screwed in if it is a screw crown).

Note: Some watches come equipped with a screw-down crown. The crown must be unscrewed by turning it counter-clockwise before you can pull the crown out.

PULL crown out to position 1. TURN the crown in either direction to adjust the time. PUSH crown all the way back in (make sure it is screwed in if it is a screw crown).

Note: Some watches come equipped with a screw-down crown. The crown must be unscrewed by turning it counter-clockwise before you can pull the crown out.

PULL crown out to position 1. TURN the crown in either direction to adjust the time. PUSH crown all the way back in (make sure it is screwed in if it is a screw crown).

Note: Some watches come equipped with a screw-down crown. The crown must be unscrewed by turning it counter-clockwise before you can pull the crown out.

PULL crown out to position 1. TURN the crown in either direction to adjust the time. PUSH crown all the way back in (make sure it is screwed in if it is a screw crown).

Note: Some watches come equipped with a screw-down crown. The crown must be unscrewed by turning it counter-clockwise before you can pull the crown out.

PULL crown out to position 1. TURN the crown in either direction to adjust the time. PUSH crown all the way back in (make sure it is screwed in if it is a screw crown).

Note: Some watches come equipped with a screw-down crown. The crown must be unscrewed by turning it counter-clockwise before you can pull the crown out.

PULL crown out to position 1. TURN the crown in either direction to adjust the time. PUSH crown all the way back in (make sure it is screwed in if it is a screw crown).

Note: Some watches come equipped with a screw-down crown. The crown must be unscrewed by turning it counter-clockwise before you can pull the crown out.

PULL crown out to position 1. TURN the crown in either direction to adjust the time. PUSH crown all the way back in (make sure it is screwed in if it is a screw crown).

## 3 SETTING A DATE WINDOW

PULL crown out to position 2. This is the furthest position you can pull it out. Then push it to the slightly to position 1.

TURN the crown counter-clockwise to the correct DATE. PUSH crown all the way back in (make sure it is screwed in if it is a screw crown).

Note: The DATE will automatically update every 24 hours. Note: To make sure that the DATE is updated at midnight instead of noon, set the date before noon.

## 4 SETTING A DATE/DATE WINDOW

PULL crown out to position 2. This is the furthest position you can pull it out.

TURN the crown clockwise to advance the time. PUSH crown in slightly to position 1.

TURN the crown clockwise to advance the day. TURN the crown counter-clockwise to advance the date. PUSH crown all the way back in (make sure it is screwed in if it is a screw crown).

Note: The DAY/DATE will automatically update every 24 hours. Note: To make sure that the DATE is updated at midnight instead of noon, set the date before noon.

Note: On the Graduate, the Day can also be set in Spanish. Every other option when you adjust the date in the previous day in English, listed in Spanish.

## 5 OPERATING A CHRONOGRAPH

The Chronograph function tracks time in seconds and minutes. The functionality of each subdial is the following (see corresponding number on drawing):

1. Main time seconds. The hand on this subdial will always be in motion.

2. 24 hour display (this is the main hour shown in the 24 hour display).

3. Minute counter for chrono. The "seconds" hand on the main dial counts in seconds for the chronograph function. This hand does not move when the Chronograph is not being used. When the chrono is started, every time the large second counter makes the 60 second rotation, the minute chrono advances 1 minute.

PRESS Top pusher to start chronograph function (On 51-30 and 42-20 Chrono it is the bottom pusher).

PRESS Top pusher again to stop chronograph function (On 51-30 and 42-20 Chrono it is the bottom pusher).

PRESS Bottom pusher to Reset the chronograph (On 51-30 and 42-20 Chrono it is the top pusher). The minute and the main "seconds" subdial will both be pointing to the 12 o'clock position.

Note: On the 51-30 and the 42-20 models, the Chronograph pushers are also screw-down crowns. The will need to be turned counter-clockwise to loosen and use.

Note: Do not push the pushers or leave the crowns unscrewed when exposing the watch to water.

## 6 RESETTING CHRONOGRAPH HANDS

Sometimes the main "second" hand does not line up with the 12 o'clock position when the Chronograph is reset. This is easy to adjust.

PULL The Crown all the way out to Position 2

PUSH The Crown in slightly to Position 1

PUSH Top pusher to advance the second hand to line up with the 12 o'clock position (on the 51-30 and 42-20 it is the bottom pusher).

PUSH The crown back in (make sure it is screwed in if it is a screw crown).

Note: Do not push the pushers or leave the crowns unscrewed when exposing the watch to water.

## SPANISH

### 1 FUNCIONAMIENTO DE LA LUZ

Para los relojes que tienen una luz, PULSAR el botón de Luz (LIGHT) para activarla.

Importante: NUNCA PULSAR UN BOTÓN DEL RELOJ DEBAJO DEL AGUA. HAY QUE ASEGURARSE ANTES DE USAR EL RELOJ QUE LA CORONA ESTE CERRADA O ENROSCADA DEL TODO.

### 2 AJUSTAR LA HORA

Note: Algunos relojes tienen una corona que se enrosca. Hay que girar la corona en el sentido opuesto de las agujas del reloj para desenroscarla y entonces poder ajustar la hora.

SACAR la corona hasta el primer punto. EMPUJAR la corona hasta el fondo para finalizar la etapa.

Note: El día y la fecha (para los relojes que proponen la opción día/da).

SACAR la corona hasta el primer punto. GIRAR la corona en el sentido de las agujas del reloj para adelantar el día.

GIRAR la corona en el sentido opuesto de las agujas del reloj para adelantar la fecha.

EMPUJAR la corona hasta el fondo para finalizar la etapa.

Note: El día y la fecha se actualizarán automáticamente cada 24 horas.

Note: Para asegurarse que el día, la fecha y la hora estén correctamente sincronizadas (AM/PM), ajustar el día y la fecha al día anterior y acabar el réglage del día y después de la hora.

Note: En el modelo GRADUATE, el día puede estar ajustado en español.

## 3 FIJAR LA FECHA

SACAR la corona hasta el primer punto. GIRAR la corona en el sentido opuesto de las agujas del reloj para adelantar la fecha.

EMPUJAR la corona hasta el fondo para finalizar la etapa.

Note: La fecha se actualizará automáticamente cada 24 horas. Note: Para asegurarse que la fecha y la hora estén correctamente sincronizadas (AM/PM), ajustar la fecha al día anterior y acabar el réglage de la fecha y después de la hora con las agujas.

Ajustar el día y la fecha (para los relojes que proponen la opción día/da).

SACAR la corona hasta el primer punto. GIRAR la corona en el sentido de las agujas del reloj para adelantar el día.

GIRAR la corona en el sentido opuesto de las agujas del reloj para adelantar la fecha.

EMPUJAR la corona hasta el fondo para finalizar la etapa.

Note: El día y la fecha se actualizarán automáticamente cada 24 horas.

Note: Para asegurarse que el día, la fecha y la hora estén correctamente sincronizadas (AM/PM), ajustar el día y la fecha al día anterior y acabar el réglage del día y después de la hora.

Note: En el modelo GRADUATE, el día puede estar ajustado en español.

## 4 FUNCIONAMIENTO DEL CRONÓMETRO

El cronómetro establece el tiempo en segundos y minutos. PULSAR el botón de arriba para arrancar el cronómetro.

Para el modelo 51-30 CHRONO y 42-20 CHRONO, PULSAR el botón de abajo.

PULSAR el mismo botón para parar el cronógrafo.

Para el modelo 51-30 CHRONO y 42-20 CHRONO, PULSAR el botón de arriba.

PULSAR el botón de a bajo para reinicializar el cronómetro.

Para el modelo 51-30 CHRONO y 42-20 CHRONO, PULSAR el botón de arriba.

Note: En el modelo 51-30 CHRONO y 42-20 CHRONO, los botones del cronómetro son también coronas que se enroscan. Note: Nunca pulsar en un botón o desroscarse una corona debajo del agua.

=> Esfera pequeña 1: Indica los segundos. Esta aguja siempre está en movimiento.

=> Esfera pequeña 2: Indica las horas (formato 12/24h). En esta pequeña esfera 24H, la aguja indica el formato AM/PM de la hora.

=> Esfera pequeña 3: Contador de minutos para el cronómetro. En función cronómetro, el segundo de la aguja principal. Esta aguja se mueve únicamente en función cronómetro. Cuando el cronómetro está activado, a cada vuelta de esfera del segundo, la aguja de los minutos del cronómetro avanza de un punto.

## 5 REINICIO DE LA AGUJA DEL CRONOMETRO

Puede que el segundo del cronómetro no este el linea con el 12 en cuanto se re-inicializa el cronómetro. Para ajustarlo correctamente:

SACAR la corona en posición 2. Para el modelo 51-30 CHRONO y 42-20 CHRONO, desroscarse también las otras coronas del reloj.

PULSAR el botón de arriba para ajustar el segundo en linea con el 12. Mantener pulsado el botón para avanzar la aguja más rápidamente.

Para el modelo 51-30 CHRONO y 42-20 CHRONO, PULSAR el botón de abajo.

EMPUJAR la corona hasta el fondo para finalizar la etapa.

Para el modelo 51-30 CHRONO y 42-20 CHRONO, enroscar cada corona una vez los ajustes hechos.

Note: Nunca pulsar un botón o desroscarse una corona de bajo del agua.

## 6 ZURUECKSTELLEN DER CHRONOGRAPHENEINSTELLUNG

Hinweise: Bei den 51-30 und der 42-20 sind die Kнопpe für den Chronographen Schraubkronen, die nur nach dem Uhrzeitgeräten aufgeschraubt werden müssen, damit sie benutzt werden können.

Hinweise: Niemals die Kнопpe drücken oder die Kronen bzw. Schraubkronen offen lassen wenn die Uhr mit Wasser in Kontakt gebracht wird.

## GERMAN

### 1 FUNKTIONEN DES LICHTS

Fuer die Uhren mit Lichtfunktionen, den Lichtknopf druecken um das Licht zu betrieuen. Niemals den Lichtknopf unter Wasser betaeuigen. Immer sicherstellen, dass die Krone hintergedrueckt ist bevor die Uhr nas wird.

### 2 ZEITEINSTELLUNG

Hinweis: Manche Uhren sind mit einer Schraubkrone ausgestattet. Diese Krone muss gegen die Uhrzeitgeraete aufgeschraubt werden, damit Du sie rausziehen kannst.

ZIEHE – die Krone komplett hinaus auf Position 2. DRUECKE – die Krone halb zurueck auf Position 1. Position 1 ist die Position auf halber Strecke zwischen Position 2 und komplett hintergedrueckter Krone.

DRUECKE – die Krone im Uhrzeitgeraet um das Datum einzustellen. DRUECKE – die Krone komplett zurueck wenn Vorgang beendet. (bei Schraubkronen sichergehen, dass die Krone ganz rein geschraubt ist).

Hinweis: Datum/Tag wird automatisch alle 24Stunden geaendert

TOURNER la couronne dans le sens inverse des aiguilles d'une montre pour régler la date.

POUSSER la couronne complètement pour valider les étapes précédentes quand vous avez terminé.

Note: La date se mettra à jour automatiquement toutes les 24 heures.

Note: Pour être certain que la date et l'heure soient bien synchronisés (midi/minuit), régler la date à J 1 puis terminer le réglage de la date puis de l'heure avec les aiguilles.

Note: Sur les Graduate, le jour peut être réglé en espagnol. Toutes les autres options que vous ajoutez les jours sont en premier en anglais puis en espagnol.

réglage du jour et de la date (pour les modèles ayant l'indicateur jour).

TIRER la couronne pour mettre en position 2. C'est la dernière position, le dernier cran lorsque vous tirez la couronne.

POUSSER la couronne en position 1.

TOURNER la couronne dans le sens des aiguilles d'une montre pour régler la date.

POUSSER la couronne complètement pour valider les étapes précédentes quand vous avez terminé.

Note: La date se mettra à jour automatiquement toutes les 24 heures.

Note: Pour être certain que la date et l'heure soient bien synchronisés (midi/minuit), régler la date à J 1 puis terminer le réglage de la date puis de l'heure avec les aiguilles.

Note: Sur les Graduate, le jour peut être réglé en espagnol. Toutes les autres options que vous ajoutez les jours sont en premier en anglais puis en espagnol.

réglage du jour et de la date (pour les modèles ayant l'indicateur jour).

TIRER la couronne pour mettre en position 2. C'est la dernière position, le dernier cran lorsque vous tirez la couronne.

POUSSER la couronne en position 1.

TOURNER la couronne dans le sens inverse des aiguilles d'une montre pour régler la date.

POUSSER la couronne complètement pour valider les étapes précédentes quand vous avez terminé.

Note: La date se mettra à jour automatiquement toutes les 24 heures.

Note: Pour être certain que la date et l'heure soient bien synchronisés (midi/minuit), régler la date à J 1 puis terminer le réglage de la date puis de l'heure avec les aiguilles.

Note: Sur les Graduate, le jour peut être réglé en espagnol. Toutes les autres options que vous ajoutez les jours sont en premier en anglais puis en espagnol.

réglage du jour et de la date (pour les modèles ayant l'indicateur jour).

TIRER la couronne pour mettre en position 2

