

USER MANUAL



Ultrasonic Cool & Warm Mist Humidifier

Model: AroMist-6000



This user manual provides safety and operating instructions.
Please read this user manual thoroughly before using the product.
This user manual will help get your humidifier going in just a few quick minutes.

TABLE OF CONTENTS

Product Specification	4
Important Safety Instructions	5
Introduction	6
Getting to Know Your Humidifier	7
General Tips	8
Operation	10
Using essential oils with AroMist-6000	13
Cleaning & Care	14
Storage, Disposal	16
Troubleshooting	17
Warranty Information	18
Defective Products & Returns	20
Customer Support - Australia	20

PACKAGE CONTENTS

1 x AroMist-6000 Humidifier
1 x Remote Control
1 x Water Filter/Demineralisation Cartridge (Pre-fitted)
1 x Cleaning Brush
5 x Pad for Aroma Box
1 x User Manual
1 x Warranty Card

THANK YOU FOR CHOOSING TO BUY AN AROVEC HUMIDIFIER

We are here to help you with any questions.
Customer Support - AUSTRALIA

🌐 www.arovec.com.au
✉ support@arovec.com.au
📷 @aroveclifestyle

PRODUCT SPECIFICATION

Power Supply	220V - 240V , 50Hz	
Rated Power	55W	
Standby Power	0.37W	
Water Tank Capacity	6.0L (200 oz)	
Mist Volume and Type	Ultrasonic Cool Mist: Level 1: 110ml/H Level 2: 160ml/H Level 3: 215ml/H Level 4: 265ml/H Level 5: 320ml/H	PTC Warm Mist: Level 1: 135ml/H Level 2: 220ml/H Level 3: 270ml/H Level 4: 315ml/H Level 5: 360ml/H
Noise Level	≤38dB	
Coverage Area	10-30m2(110-320ft²)	
Running Time	18-50 hours*	
Night Light	Optional LED Light	
Net Weight	2.1kg	
Product Dimensions	28x16x34cm	
Essential Oil Diffuser	Essential Oil Tray	
Cord Length	1.57cm	
Demineralisation Cartridge (Water Filter)	Ceramic Balls: Filters out heavy metals and activated water using adsorption purification.	
Water Filter Life Time	4-6 months^	
Water Filter Material Composition	Alumina 35.1% Silica 34.81% Boron oxide 11.02% Manganese oxide 4.7% Iron oxide 10.18% Sodium oxide 0.91% Potassium oxide 0.04% Phosphorus pent-oxide 0.22% Titanium dioxide 0.26% Ferrous oxide 1.35% Other elements 1.41%	

* Running time may vary depending on mist level and amount of water in the tank.

^ Depends on water quality or amount of minerals in the water.

IMPORTANT SAFETY INSTRUCTIONS

Please read all instructions before use to prevent the risk of injury, fire, electric shock or damage. Use your humidifier safely by following the instructions in this manual.

- **ALWAYS** turn off and unplug the humidifier before filling or cleaning the water tank.
- **DO NOT** use the humidifier if it has been dropped, damaged, left outside, dropped in water, is defective or not working properly.
- **DO NOT** use the humidifier if the cord or plug looks damaged.
- **DO NOT** use the humidifier near gas appliances, fire places, stoves, candles, or heating devices.
- **DO NOT** use the humidifier in an area with insect repellents, burning incense, toxic fumes, flammable dust or oxygen tanks. Always leave at least 1.5m of clear space from any oxygen being administered.
- **PLACE** the unit in a clear space that allows the mist to flow freely, away from appliances that are sensitive to water.
- **DO NOT** touch any part of the humidifier or plug with wet hands.
- **DO NOT** run the power cord under furniture, other appliances, carpet, cover with rugs, runners or floor coverings.
- **ALWAYS** tuck away the power cord to prevent tripping accidents.
- **DO NOT** use the power plug on wet or damp surfaces.
- **DO NOT** put the humidifier in water or liquids.
- **DO NOT** use the humidifier outdoor.
- **DO NOT** put fingers or any objects into the mist outlet.
- **DO NOT** use a defective humidifier or attempt to repair/adjust any electrical or mechanical functions, this may cause danger and void the warranty.
- **DO NOT** let children or people with reduced physical or mental capabilities, to use or clean the humidifier.
- **DO NOT** let children play with this appliance or packaging including plastic bag. Children must be supervised around the humidifier to help keep them safe.
- **DO NOT** sit on the humidifier or put any objects on top of the unit.
- **DO NOT** block/obscure the air inlet and mist outlet.
- **DO NOT** fit the humidifier with a different power supply unit.
- **DO NOT** use for commercial purposes. This appliance is for household use only.
- It is recommended to NOT use the appliance with an extension cord to avoid electrical shock or spark.
- **TURN OFF** the humidifier when it is not being used. Hold the plug and remove it from the electrical source. Drain the water and clean the water tank.

KEEP THESE INSTRUCTIONS IN A SAFE PLACE.

INTRODUCTION

The AroMist-6000 ultrasonic cool & warm mist humidifier generates a relaxing and scented mist that moisturizes the air with calming aromatherapy.

Product Features:

Humidifier: Cool and warm mist moisturizes and refreshes the air in your home or office. This Arovec humidifier uses advanced ultrasonic and PTC technologies to turn water into a therapeutic cool and warm mist, respectively.

Aromatherapy: Enjoy the ultimate aromatherapy experience using your favorite essential oil (oil not included in the package). This is an additional feature of this humidifier and not required to run the unit.

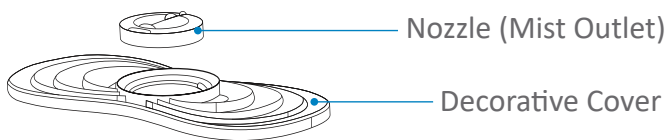
Night Light: Optional night light, creates a calm ambience that supports extra relaxation.

GETTING TO KNOW YOUR HUMIDIFIER

Remote Control

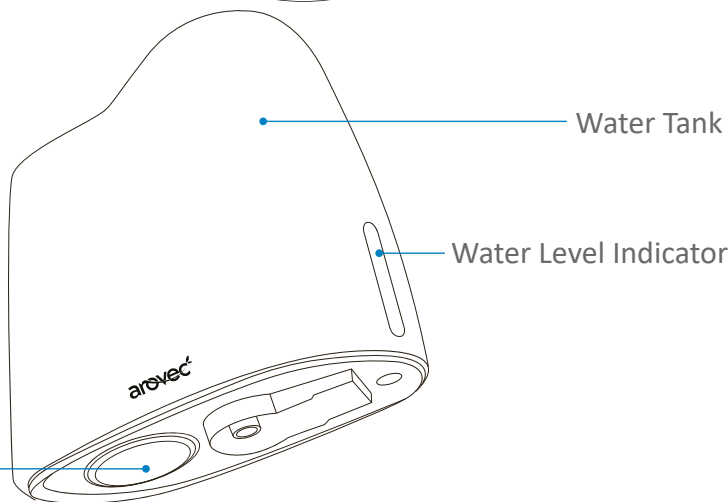


Cleaning Brush



Nozzle (Mist Outlet)

Decorative Cover



Water Tank

Water Level Indicator

Water Tank Inlet

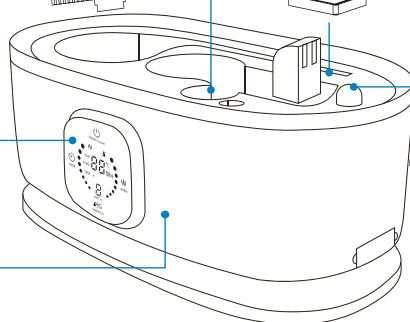
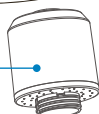
Water Filter

Water Tank Cover

Control Panel

Base

Air Filter Dustproof Sponge



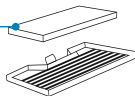
Floater

PTC Heating

Night Light

Power Cord

Essential Oil Tray



GENERAL TIPS

- **DO NOT** place the humidifier on carpet, towel or soft surface, which will block the air inlet and may damage the humidifier. For more efficiency, place the humidifier on a flat surface, 60cm away from the floor and 30cm away from the wall.
- **DO NOT** place the humidifier on wooden furniture as it may damage by water.
- **DO NOT** put the humidifier on an unstable surface e.g. bed or couch. [Figure 1.1]

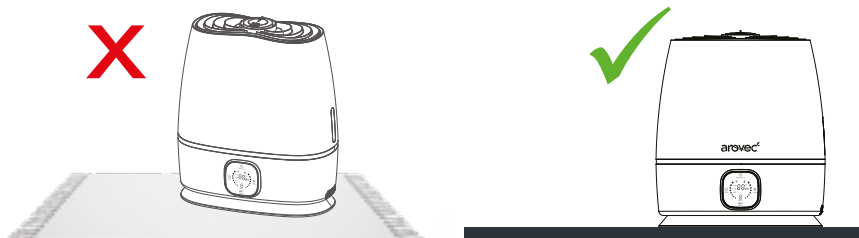


Figure 1.1

- **DO NOT** add water into humidifier through the top opening/mist outlet or base. [Figure 1.2]

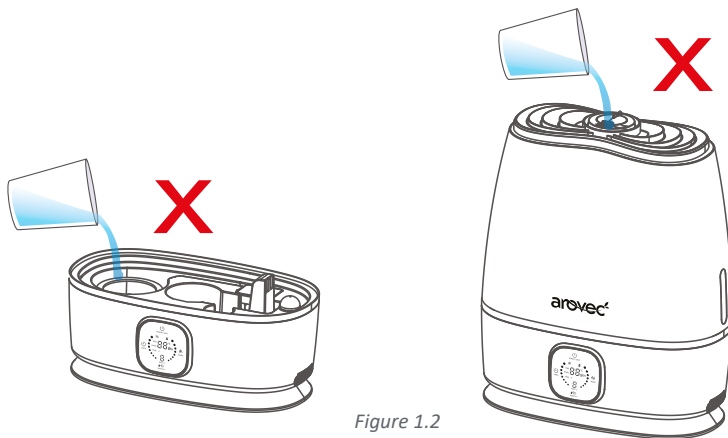


Figure 1.2

- **DO NOT** direct the mist nozzle against the wall or window. [Figure 1.3]



Figure 1.3

- The most comfortable relative humidity is between 40%-60%. Please adjust the mist level as needed. [Figure 1.4]

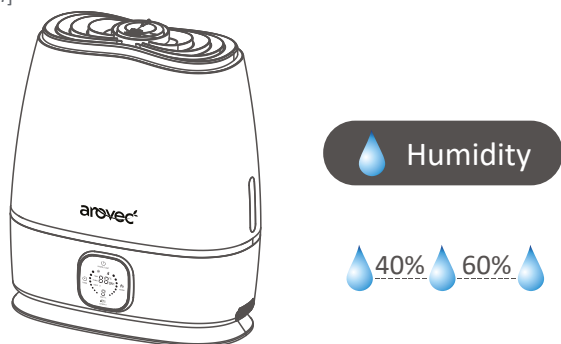


Figure 1.4

- **DO NOT** add essential oil directly into the tank or base. Add recommended drops of essential oil into the oil tray. [Figure 1.5]

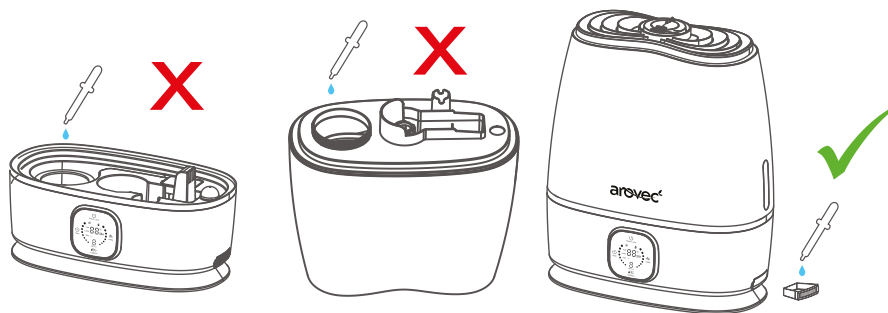
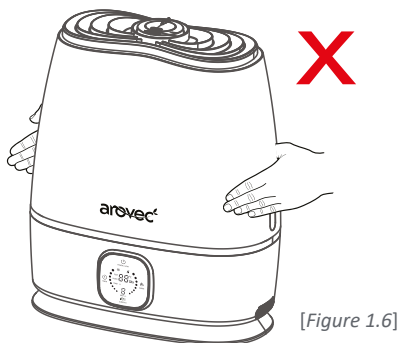


Figure 1.5

- Using tap water with a high mineral content (hard water) in any humidifier can cause a fine white dust to be emitted. To avoid this, use distilled, demineralised or cold boiled water. Room temperature water is recommended, do not fill with hot water.
- **DO NOT** move the humidifier while it is still running and when water tank is full to prevent water spillage. [Figure 1.6]



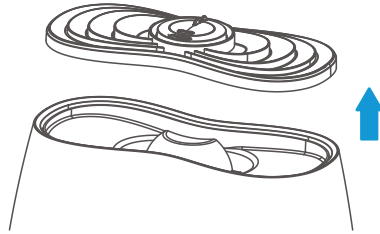
[Figure 1.6]

OPERATION

Follow the bellow steps to easily and effectively use the AroMist-6000 humidifier.

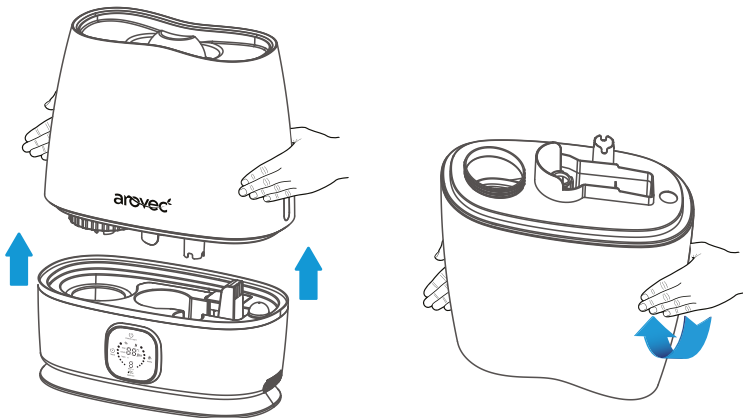
Add Water:

1. Remove the nozzle and decorative cover from humidifier. [Figure 2.1]



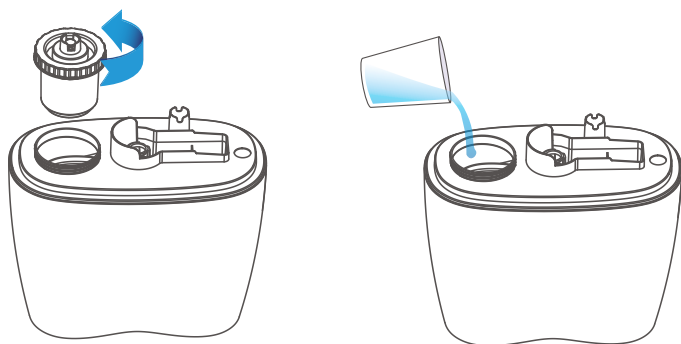
[Figure 2.1]

2. Left up the water tank with both hands and turn it upside down. [Figure 2.2]



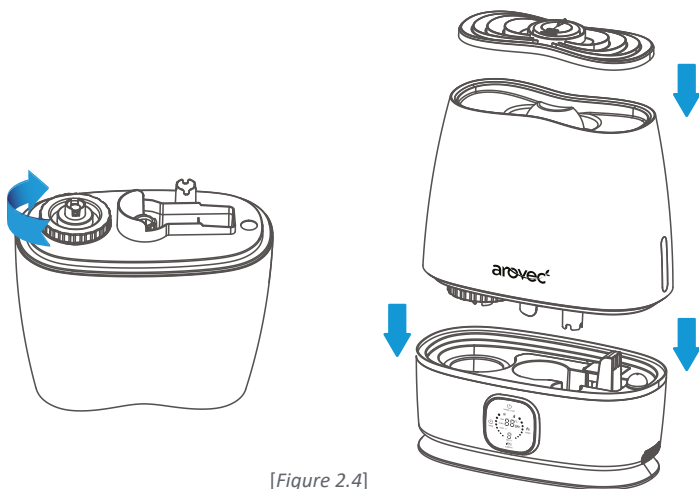
[Figure 2.2]

3. Remove the water tank cap and fill with clean water (Room temperature water). [Figure 2.3]



[Figure 2.3]

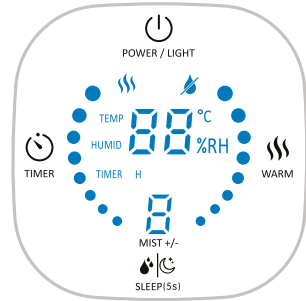
4. Attach the water tank cap and place the water tank back onto the base. Make sure it fits together securely. Put the decorative cover and nozzle back on. [Figure 2.4]



[Figure 2.4]

Control Panel:

Plug the humidifier into an electrical outlet.



POWER & NIGHT LIGHT Button:

- Tap (⏻) once to turn the humidifier ON or OFF.
- Tap and hold (⏻) for 3 seconds to turn the night light ON or OFF.



MIST LEVEL & SLEEP-MODE Button:

- There are 5 mist level options.
- Each tap will toggle to the next mist level option.

Sleep Mode:

- In sleep mode, the humidifier runs quietly on lowest mist level and all indicators turn off including night light.
- Tap and hold (🌙) for 3 seconds to enter sleep mode.
- To end the sleep mode, tap any button except power button.

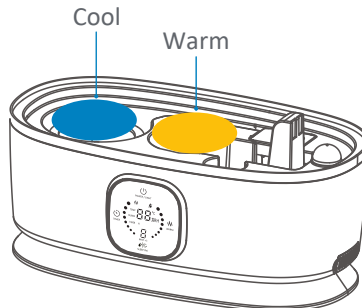


WARM MIST Button:

- Tap (💧) once to active/inactive the warm mist option.

Note: The warm mist temperature setting is between 25 - 33°C to provide a comfortable atmosphere. This standard is mainly set for health and safety reasons. Because a comfortable temperature of the human body is in this range. If the mist temperature is too high, it is easy to burn the skin or create an uncomfortable environment with high temperatures in the room.

[Figure 2.5]



[Figure 2.5]



TIMER Button:

- You can set a timer up to 9 hours.
- Tap (⌚) repeatedly to select a timer.
- The timer display will automatically count down as time passes.
- The humidifier will automatically power off once the timer has finished counting down.
- To cancel the timer, tap (⌚) repeatedly until the timer display disappears.



WATERLESS INDICATOR:

- When the water tank runs out of water, the humidifier will stop misting and (💧) indicator will start flashing on the display to remind you fill the water tank. It is designed for safety to prevent the humidifier from possibly overheating and damaging the atomiser.

USING ESSENTIAL OILS WITH AroMist-6000

Enjoy the ultimate aromatherapy experience using your favorite essential oil (oil not included in the package). This is an additional feature of this humidifier and not required to run the unit. Please follow below recommendations for proper use of essential oils to avoid product malfunction/damage or any harm to the users.

- Use 100% natural essential oil.
- Add 10 to 15 drops of essential oil into the oil traysponge. Do not exceed the suggested amount of oil.
- DO NOT add essential oil directly into the tank or base. Only add recommended drops of essential oil into the oil tray sponge.
- DO NOT spill essential oil on your skin. If you do, wash it off with water immediately.
- DO NOT swallow the essential oil or contact with eyes. If you do, wash your eyes and seek medical help immediately.
- Pregnant women, elderly people, young children or people with chronic diseases may be more sensitive to a particular fragrance. Stop using of any essential oil that makes you feel unwell.
- Keep the essential oil tightly closed and store in a dark, cool place, out of the reach of children and pets.
- Carefully observe the expiration date of the essential oil. The standard expiration date is one year from first opening for most oils. However, citrus oils have a 6-month expiration date.

Arovec's 100% Pure Essential Oils (not included in AroMist-6000 package) are the best way to take advantage of the AroMist-6000 aromatherapy benefits.

Visit arovec.com.au for more details and orders.

CLEANING & CARE

Arovec recommends to perform basic cleaning and deep cleaning of AroMist-6000.

Basic Cleaning:

Arovec recommends basic cleaning the humidifier every 3 days.

1. DO NOT use any harsh cleaning agents e.g., bleach or alcohol to clean any part of the humidifier.
2. Turn off and unplug the humidifier from the power source. Drain water from the tank and base. Pour water from the base carefully as shown in [Figure 3.1]. Flooding the electrical components can damage the device.

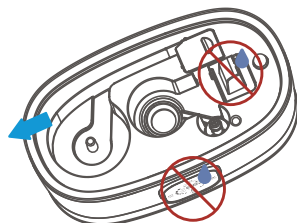


Figure 3.1

3. Wipe down and dry the outside of humidifier regularly with a soft cloth or paper towel.

Deep Cleaning

Arovec recommends deep cleaning the humidifier every 2 weeks and before/after storing it for long periods of time. You should also deep clean if there is any mould or scale build-up inside the water tank or base.

To properly clean your humidifier, Arovec recommends to remove scale/mould, disinfect the humidifier and clean the dustproof sponge

1. Turn off and unplug the humidifier from the power source.
2. Remove the nozzle and decorative cover from the humidifier. Drain water from the tank and base carefully. [Figure 3.2]

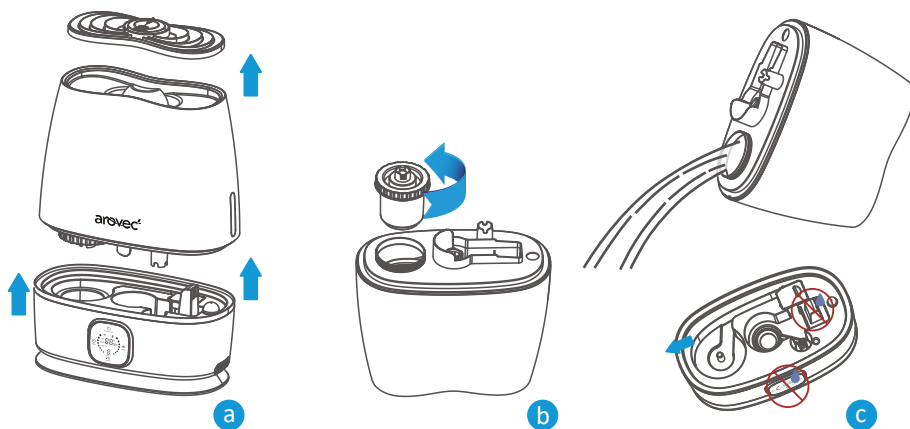


Figure 3.2

3. Fill the water tank about half way. Add in 1 teaspoon of undiluted distilled white vinegar into the water tank. Attach the water tank cap and shake for 30 seconds.[Figure 3.3]

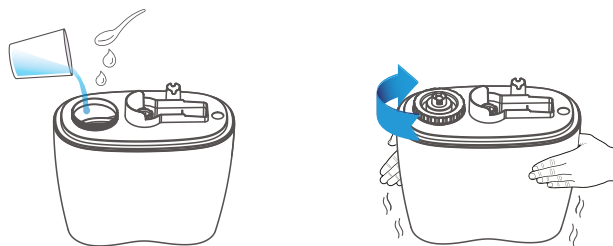


Figure 3.3

4. Place the water tank back onto the base. Let the vinegar and water solution enter the base. This will help to loosen mineral scale/build-up on the atomiser, water floater and base of the water tank. Leave it for 20-30 minutes. [Figure 3.4]

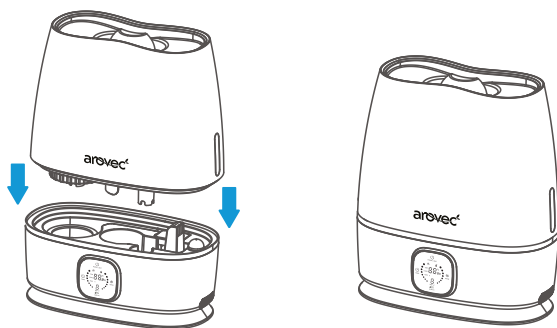


Figure 3.4

5. Remove the water tank cap and drain the solution from the water tank and base. Wipe the atomiser, floater and base with a soft cloth to remove loosened scale.
6. Rinse the water tank and base thoroughly to remove any sediment, dirt and smell of vinegar.
7. Wipe down and dry the humidifier with a soft cloth.
8. For better performance, wash and clean the dustproof sponge (at the bottom of base) and oil sponge in oil tray with water at least once a month. [Figure 3.5]

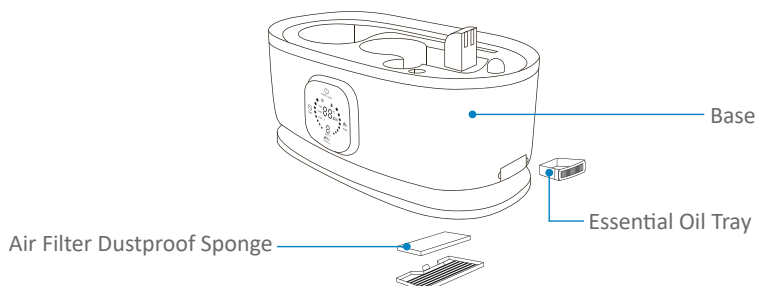


Figure 3.5

STORAGE

- If not using the AroMist-6000 for an extended period of time, it is a good idea to clean and wrap it in plastic packaging and store in a dry place to avoid moisture damage.
- Ensure the AroMist-6000 is turned off by removing the power plug from the power outlet.
- Store the AroMist-6000 in an upright position. Do not store anything on the top of the AroMist-6000.

DISPOSAL



To prevent possible harm to the environment or human health from uncontrolled waste disposal, separate the unneeded humidifier and its related accessories from other types of wastes. Ask your local council where to dispose of your humidifier and its related accessories. You should not throw your humidifier and its related accessories away with the daily normal household waste.

TROUBLESHOOTING

Here are some tips to try if your humidifier isn't working properly.

Problem	Possible Solution
AroMist-6000 won't turn ON or buttons not working	Try plugging the AroMist-6000 into a different outlet. Make sure there is enough water in the water tank.
Air blows but water mist is not produced	Check if there is enough water in the water tank. Make sure the water tank is correctly attached to the base. The base might be overfilled. Remove the water tank, drain the base water and replace the water tank on the empty base. Mineral build-up on atomiser. Clean scale from atomiser.
Waterless indicator is constantly flashing	No water in the water tank. Fill with clean water. Water floater stuck. Adjust the water floater to a horizontal position and make sure it can rise up with water.
Reduced mist level	Do not fill with too cold or hot water, room temperature water is recommended. Mist level is set too low for the room size. Adjust the mist level. Close doors or windows to reduce air ventilation.
Water leakage	Base may be overfilled. Drain the water from the base. Do not fill the base with water, place the water tank on the empty base. Start operating the humidifier. Humidifier may be placed on an unstable surface. Place on a flat surface. Water tank maybe damaged or water tank cap is not tightened securely.
Warm mist temperature is low	The warm mist temperature is around 25 - 33°C that is set based on a comfortable atmosphere for human body. The normal human body temperature (around 37°C) is higher than the warm mist temperature (25 - 33°C), therefore, the warm mist is not easily sensed warm with our body. However, the room will reach a comfortable atmosphere after a long operation of the humidifier in the warm mist option. On the other hand, the cool mist will lower the room temperature in long operations. Additionally, the mist is coming out from the nozzle with the airflow that has a speed (like blowing winds), consequently, the temperature of warm mist will be sensed lower.
The mist has a bad smell	Clean the water tank and base thoroughly and fill the water tank with fresh water. Wash and clean the oil tray and oil sponge for every oil change. unpleasant odour may produce if mixed with another essential oil.
White dust is forming on nearby furniture	Leave the empty water tank open in a cold place for 10 hours make sure the water tank cap is not attached. Hard water may deposit a certain kind of dust with any humidifier. Dust in the air also settles because of added humidity in the room. Use distilled, demineralised or cold boiled water if this becomes a nuisance, or change the demineralisation cartridge (water filter).
Mist height is low. Condensation forms around humidifier on desk, floor, windows or walls	Mist level is set too high for the room size. If the room is too humid, open door and windows and adjust to low mist level. Low indoor temperature causes liquefaction. Air inlet is blocked. Ensure the unit is placed on a hard, flat surface and air inlet is open. Ensure the humidifier is placed 60cm away from the floor and 30cm away from sides.
AroMist-6000 has stopped working	Check if there is enough water in the water tank.
AroMist-6000 is getting too hot	AroMist-6000 is continuously working for too long time. Turn off for 15 minutes.
Water flow sound	While the humidifier is working it may generate water noise as water is going down to the base. This is normal.

If your problem isn't listed in the above table, please contact customer support at support@arovec.com.au for assistance.

WARRANTY INFORMATION

Arovec humidifiers are designed and manufactured to the highest quality standards. Your humidifier is covered for parts and labour for 2 year warranty, which includes 1-year standard warranty and 1-additional year, from the date of original purchase.

Product name	Ultrasonic Cool & Warm Mist Humidifier
Model	AroMist-6000
Standard warranty period	1 Year
Additional warranty	Extend your warranty for 1 - additional year. Simply register on to arovec.com.au/warranty within the first 14 days of your purchase.
Record your order details here. This will help if you have any warranty questions in the future.	
Date of original purchase	
Order number	

TERMS AND CONDITIONS

In addition to your rights under the Arovec warranty, you are also covered by guarantees under Australian Consumer Law. The Arovec warranty is only available in Australia.

In Australia our goods come with guarantees that cannot be excluded under the Australian Consumer Law. You are entitled to a replacement or refund for a major failure and compensation for any other reasonably foreseeable loss or damage. You are also entitled to have the goods repaired or replaced if the goods fail to be of acceptable quality and the failure does not amount to a major failure.

What is Covered:

- The repair or replacement of your Arovec humidifier (at Arovec's discretion) if the product is found to be defective due to faulty manufacture. Arovec reserves the right to determine if the fault requires a replacement or repair.
- Packaging and instructions of a faulty humidifier may also be replaced if damaged.
- This warranty is valid for using your humidifier within Australia.
- This warranty is valid for personal use only.
- Warranties are limited to the 2 year (1-year standard and 1-additional year) from the date of original purchase.

What is Not Covered:

- Using your humidifier for commercial purposes, or anything other than normal domestic use.
- Using your humidifier outside of Australia.
- Accidental damage or faults caused by neglect, misuse, vandalism and abuse.
- Accidental damage or faults caused by not following the instructions or safety warnings contained in this User Manual.
- Unsupervised use by children under the age of 18.
- Repairs or alterations carried out by parties other than Arovec or an authorised agent.
- All other conditions that are not covered by Arovec warranty as listed in the “What is Covered” section.

This warranty is not transferrable.

Arovec is not responsible or liable for any damages, losses or inconveniences caused by product failure or accidental damage or faults caused by not following the instructions or safety warnings contained in this User Manual.

Please email at support@arovec.com.au with any further inquiries about Arovec warranty or to ask about making a warranty claim. You must contact us within your warranty period for your claim to be eligible.

DEFECTIVE PRODUCTS & RETURNS

Once your product proved as a defective within the specified warranty period, stop using it and contact customer support at support@arovec.com.au with your order number.

CUSTOMER SUPPORT - AUSTRALIA

Please contact customer support with any questions regarding your product. Feel free to contact our helpful customer support team. Your satisfaction is our priority.

Customer support:

Yasin Pty Ltd.

PO Box 2, Ermington NSW 1700, Australia

www.arovec.com.au

support@arovec.com.au

Please provide your order number when you contact customer support.

NOTES

[illegible]

NOTES



www.arovec.com.au

Questions or Concerns?

support@arovec.com.au

V2.1020