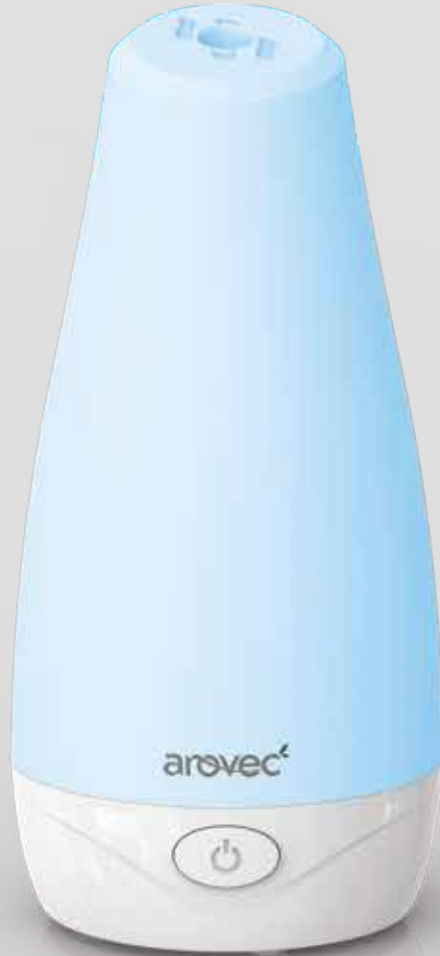


USER MANUAL



Essential Oil Diffuser

Model: AroSpa-100



This manual provides safety and operating instructions.
Please read this manual thoroughly before using the product.
This manual will help get your essential oil diffuser going in just a few quick minutes.

TABLE OF CONTENTS

Important Safety Instructions	4
Introduction	5
Product Features	5
Getting to Know Your AroSpa-100	6
General Tips	7
Operation	8
Using Essential Oils with AroSpa-100	10
Cleaning & Care, Storage, Disposal	11
Troubleshooting	12
Warranty Information	13
Defective Products & Returns	15
Customer Support - Australia	15

WHAT'S IN THE BOX

1 x AroSpa-100 Essential Oil Diffuser
1 x Measuring Cup
1 x Power Adapter
1 x User Manual
1 x Warranty Card

PRODUCT SPECIFICATION

Power Supply	DC 24V, 0.5A
Adapter Power Supply	Input: AC 100-240V , 50/60Hz
	Output: DC 24V
Rated Power	12W
Standby Power	0.23W
Operating Conditions	5°C - 40°C, relative humidity 30% - 80%
Water Capacity	100ml (3.4oz)
Mist Volume	15-30ml/H
Noise Level	≤30dB
Coverage Area	15m ²
Running Time	4-7 hours*
Multi-Colour Changing Lights	Optional LED Light
Net Weight	0.4kg
Dimensions	10x10x21cm

* Running time may vary depending on the amount of water in the tank and room temperature.

THANK YOU FOR CHOOSING TO BUY AN AROVEC ESSENTIAL OIL DIFFUSER

We are here to help you with any questions.
Customer Support - AUSTRALIA

🌐 www.rovec.com.au
✉ support@rovec.com.au
📷 @aroveclifestyle

IMPORTANT SAFETY INSTRUCTIONS

Please read all instructions before use to reduce the risk of injury, fire, electric shock or damage. Use your essential oil diffuser safely by following the instructions in this manual.

- **ALWAYS** turn off and unplug the essential oil diffuser before filling or cleaning the water tank.
- **DO NOT** fill water over the MAX level marked on the water tank. The essential oil diffuser will not work if overfilled.
- **DO NOT** fill with hot water. Room temperature water is recommended.
- **DO NOT** add water to the essential oil diffuser through the top opening/mist outlet.
- **DO NOT** move the essential oil diffuser while it is still running and when water tank is full to prevent water spillage.
- **DO NOT** use the essential oil diffuser if it has been dropped, damaged, left outside, dropped in water, is defective or not working properly.
- **DO NOT** use the essential oil diffuser if the cord or adapter looks damaged.
- **DO NOT** use the essential oil diffuser near gas appliances, fire places, stoves, candles, or heating devices.
- **DO NOT** use the essential oil diffuser in an area with insect repellents, burning incense, toxic fumes, flammable dust or oxygen tanks. Always leave at least 1.5m of clear space from any oxygen being administered.
- **PLACE** the essential oil diffuser in a clear space that allows the mist to flow freely, away from appliances that are sensitive to water.
- **DO NOT** touch any part of the essential oil diffuser or adapter with wet hands.
- **DO NOT** run the power cord under furniture, other appliances, carpet, cover with rugs, runners or floor coverings.
- **ALWAYS** tuck away the power cord to prevent tripping accidents.
- **DO NOT** put the essential oil diffuser on an unstable surface e.g. bed or couch.
- **DO NOT** use the power adapter on wet or damp surfaces.
- **DO NOT** put the essential oil diffuser in water or liquids.
- **DO NOT** use the essential oil diffuser outdoor.
- **DO NOT** add more than the recommended drops of essential oil.
- **DO NOT** put fingers or any objects into the mist outlet.
- **DO NOT** attempt to repair or adjust any electrical or mechanical functions of the essential oil diffuser, as this may cause danger and void the warranty.
- **DO NOT** let children, or people with reduced physical or mental capabilities, to use or clean the essential oil diffuser without supervision.
- **DO NOT** let children play with this appliance or packaging including plastic bag. Children must be supervised around the essential oil diffuser to help keep them safe.
- **DO NOT** sit on the essential oil diffuser, or put any objects on top of the unit.
- **DO NOT** block/obscure the mist outlet.
- **DO NOT** fit the essential oil diffuser with a different power supply unit.
- **DO NOT** clean with the power adapter plugged in.
- **DO NOT** use for commercial purposes. This appliance is for household use only.
- It is recommended to NOT use the appliance with an extension cord to avoid electrical shock or spark.
- **TURN OFF** the essential oil diffuser when it is not being used. Hold the adapter and remove it from the electrical source. Drain the water and wipe the water tank.

KEEP THESE INSTRUCTIONS IN A SAFE PLACE.

INTRODUCTION

The AroSpa-100 ultrasonic essential oil diffuser generates a relaxing and scented mist that moisturizes the air with calming aromatherapy.

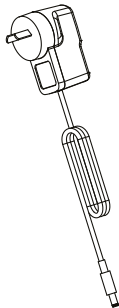
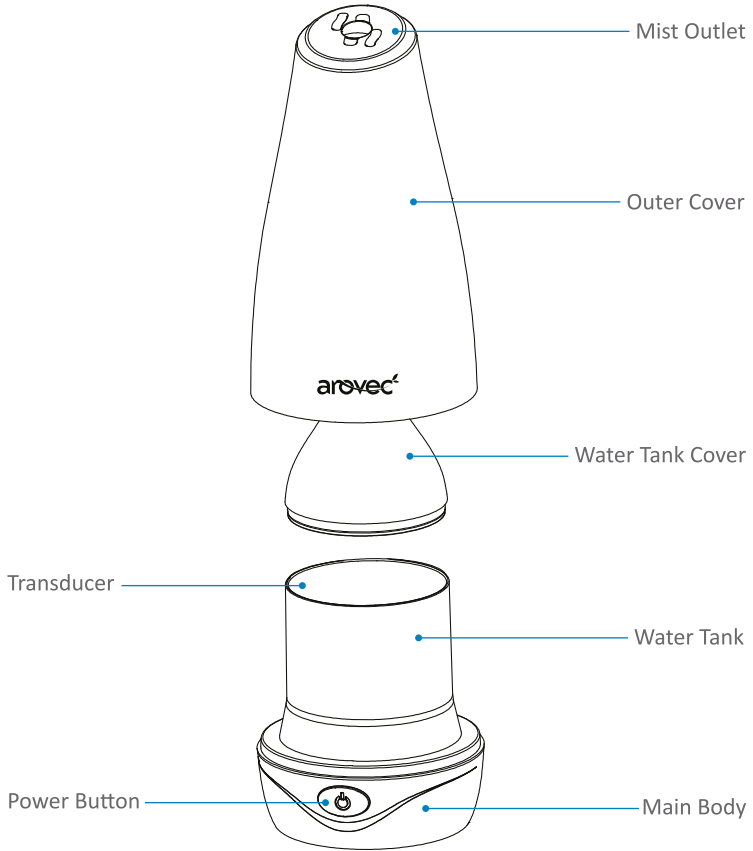
PRODUCT FEATURES

Aromatherapy: The safe, non-heating Arovec essential oil diffuser uses advanced ultrasonic technology that produces high-frequency vibrations to turn water into a therapeutic mist. Enjoy the ultimate aromatherapy experience using your favorite essential oil (oil not included in the package).

Humidifier: Moisturizes and refreshes the air in your home or office.

LED Multi-Colour Night Light: Creates a calm ambience that supports extra relaxation.

GETTING TO KNOW YOUR ESSENTIAL OIL DIFFUSER



Power Adapter



Measuring Cup

GENERAL TIPS

- For more efficiency, place the essential oil diffuser on a flat surface, 60cm away from the floor and 10cm away from the wall. DO NOT place the essential oil diffuser on wooden furniture as it may damage by water. [Figure 1.1]

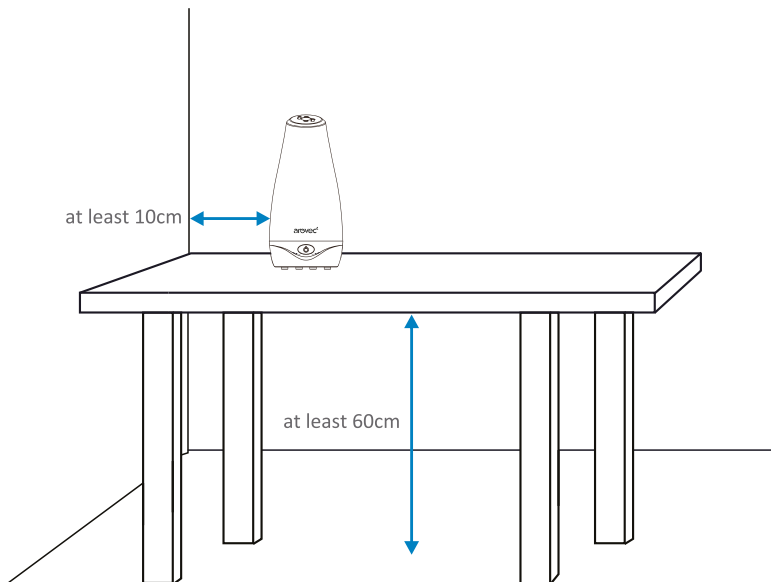


Figure 1.1

- DO NOT** add water to the essential oil diffuser through the top opening/mist outlet. [Figure 1.2]

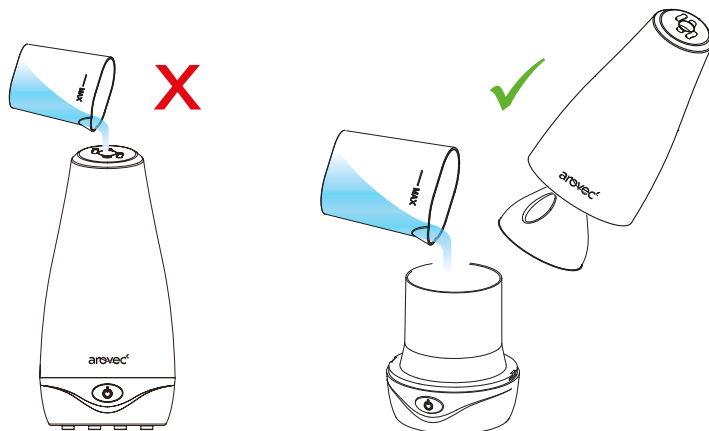


Figure 1.2

OPERATION

Follow the bellow steps to easily and effectively use the AroSpa-100 Essential Oil Diffuser.

1. Take off the outer cover. [Figure 2.1]

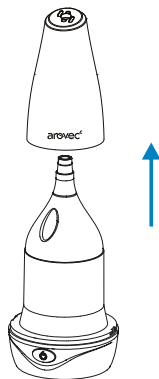


Figure 2.1

2. Take off the water tank cover. [Figure 2.2]

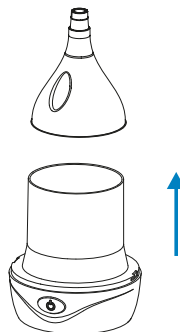


Figure 2.2

3. Fill water into the water tank using the measuring cup. [Figure 2.3]

DO NOT fill water over the MAX level marked on the water tank. The AroSpa-100 will not work if overfilled. Room temperature water is recommended.

DO NOT fill with hot water.



Figure 2.3

4. It is recommended to add 3 to 5 drops of essential oil into the water tank to enhance the aroma of your room. [Figure 2.4]



Figure 2.4

5. Replace the water tank cover. [Figure 2.5]

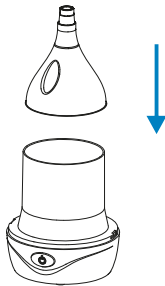


Figure 2.5

6. Replace the outer cover. [Figure 2.6]

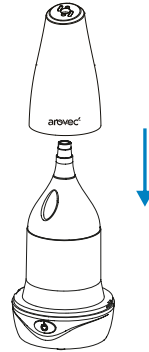


Figure 2.6

7. Connect the power adapter to the AroSpa-100. [Figure 2.7]

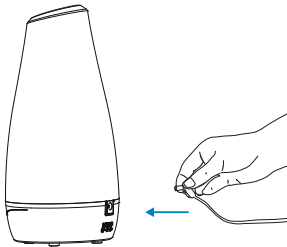



Figure 2.7

8. Press the () to turn the AroSpa-100 on or off. [Figure 2.8]

1st press: AroSpa-100 ON, Night light OFF.

2nd press: AroSpa-100 ON, Night light ON.

3rd press: AroSpa-100 OFF, Night light OFF.

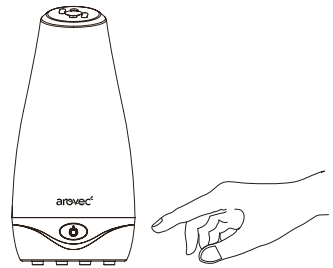


Figure 2.8

USING ESSENTIAL OILS WITH AROSPA-100

Please follow below recommendations for proper use of essential oils to avoid product malfunction/damage or any harm to the users.

- Use 100% natural essential oil.
- Add 3 to 5 drops of essential oil into 100ml of water. Do not exceed the suggested amount of oil.
- DO NOT spill essential oil on your skin. If you do, wash it off with water immediately.
- DO NOT swallow the essential oil or contact with eyes. If you do, wash your eyes and seek medical help immediately.
- The water tank and cover of AroSpa-100 are made of oil-proof materials. Take care not to spill the essential oil on the other parts of AroSpa-100 as some oil ingredients may dissolve those parts.
- Clean the water tank of AroSpa-100 for every oil change. Some essential oils are not completely soluble in water and it may remain in the water tank which cause unpleasant odour if mixed with another essential oil.
- Pregnant women, elderly people, young children or people with chronic diseases may be more sensitive to a particular fragrance. Stop using of any essential oil that makes you feel unwell.
- Keep the essential oil tightly closed and store in a dark, cool place, out of the reach of children and pets.
- Carefully observe the expiration date of the essential oil. The standard expiration date is one year from first opening for most oils. However, citrus oils have a 6-month expiration date.

Arovec's 100% Pure Essential Oils (not included in AroSpa-100 package) are the best way to take advantage of the AroSpa-100 aromatherapy benefits.

Visit arovec.com.au for more details and orders.

CLEANING & CARE

Arovec recommends to clean the AroSpa-100 at least once a week.

- Turn off and unplug the AroSpa-100 before you clean it.
- Take off the outer cover.
- Take off the water tank cover.
- Drain and rinse the water tank thoroughly to remove any sediment and dirt. Do not immerse the main body in water.
- Wipe and dry all parts with a soft cloth or paper towel.

STORAGE

- Ensure the AroSpa-100 is turned off by removing the power adapter from the power outlet.
- If not using the AroSpa-100 for an extended period of time, it is good idea to clean, wrap it in plastic packaging and store in a dry place to avoid moisture damage.
- Store the AroSpa-100 in an upright position. Do not store anything on the top of the AroSpa-100.

DISPOSAL

Ask your local council where to dispose of your essential oil diffuser. You should not throw the AroSpa-100 away with the daily normal household waste.

TROUBLESHOOTING

Here are some tips to try if your essential oil diffuser isn't working properly.

Problem	Possible Solution
AroSpa-100 won't turn on or button not working.	Plug into a powered electrical outlet.
	Try plugging the AroSpa-100 into a different outlet.
	The power adapter is not connected perfectly into the AroSpa-100.
	AroSpa-100 or the adapter might be damaged.
	Make sure the water level isn't beyond the MAX level of water tank.
	Clean the particles settlement or essential oil clogging from the water tank.
Air blows but water mist is not produced.	Try plugging the AroSpa-100 into a different outlet.
	Check if there is enough water in the water tank.
	Make sure the water level isn't beyond the MAX level of water tank.
	Make sure the outer cover is correctly attached.
Reduced mist level.	The water in the unit is too cold, replace with room temperature water.
	Do not fill with hot water, room temperature water is recommended.
The mist has a bad smell.	Clean the water tank thoroughly and fill it with fresh water.
	Clean the water tank of AroSpa-100 for every oil change. Some essential oils are not completely soluble in water and it may remain in the water tank, which cause unpleasant odour if mixed with another essential oil.
White dust is forming on nearby furniture.	Hard water may deposit a certain kind of dust. Dust in the air also settles because of added humidity in the room. Use distilled water if this becomes a nuisance.
AroSpa-100 has stopped working.	Check if there is enough water in the water tank.
Increased noise level.	AroSpa-100 must be placed on a flat, level and hard surface.
	A foreign object might be stuck inside the AroSpa-100.

If your problem isn't listed in the above table, please contact customer support at support@arovec.com.au for assistance.

WARRANTY INFORMATION

Arovec essential oil diffusers are designed and manufactured to the highest quality standards. Your essential oil diffuser is covered for parts and labour for 2 year, which includes 1-year standard warranty and 1-additional year, from the date of original purchase.

Product name	Essential Oil Diffuser
Model	AroSpa-100
Standard warranty period	1 Year
Additional warranty	Extend your warranty for 1 - additional year; Simply register on to arovec.com.au/warranty within the first 14 days of your purchase.
Record your order details here. This will help if you have any warranty questions in the future.	
Date of purchase	
Order number	

TERMS AND CONDITIONS

In addition to your rights under the Arovec warranty, you are also covered by guarantees under Australian Consumer Law. The Arovec warranty is only available in Australia.

In Australia our goods come with guarantees that cannot be excluded under the Australian Consumer Law. You are entitled to a replacement or refund for a major failure and compensation for any other reasonably foreseeable loss or damage. You are also entitled to have the goods repaired or replaced if the goods fail to be of acceptable quality and the failure does not amount to a major failure.

What is Covered:

- The repair or replacement of your Arovec essential oil diffuser (at Arovec's discretion) if the product is found to be defective due to faulty manufacture. Arovec reserves the right to determine if the fault requires a replacement or repair.
- Packaging and instructions of a faulty essential oil diffuser may also be replaced if damaged.
- This warranty is valid for using your essential oil diffuser within Australia.
- This warranty is valid for personal use only.
- Warranties are limited to the 2 year (1 year standard and 1 - additional year) from the date of original purchase.

What is Not Covered:

- Using your essential oil diffuser for commercial purposes, or anything other than normal domestic use.
- Using your essential oil diffuser outside of Australia.
- Accidental damage or faults caused by negligence, misuse, vandalism or neglect.
- Accidental damage or faults caused by not following the instructions or safety warnings contained in this User Manual.
- Unsupervised use by children under the age of 18.
- Repairs or alterations carried out by parties other than Arovec or an authorised agent.
- All other conditions that are not covered by Arovec warranty as listed in the “What is Covered” section.

This warranty is not transferrable.

Arovec is not responsible or liable for any damages, losses or inconveniences caused by product failure or accidental damage or faults caused by not following the instructions or safety warnings contained in this User Manual.

Please email at support@arovec.com.au with any further inquiries about Arovec warranty or to ask about making a warranty claim. You must contact us within your warranty period for your claim to be eligible.

DEFECTIVE PRODUCTS & RETURNS

Once your product proved as a defective within the specified warranty period, stop using it and contact customer support at support@arovec.com.au with your order number.

CUSTOMER SUPPORT - AUSTRALIA

Please contact customer support with any questions regarding your product. Feel free to contact our helpful customer support team. Your satisfaction is our priority.

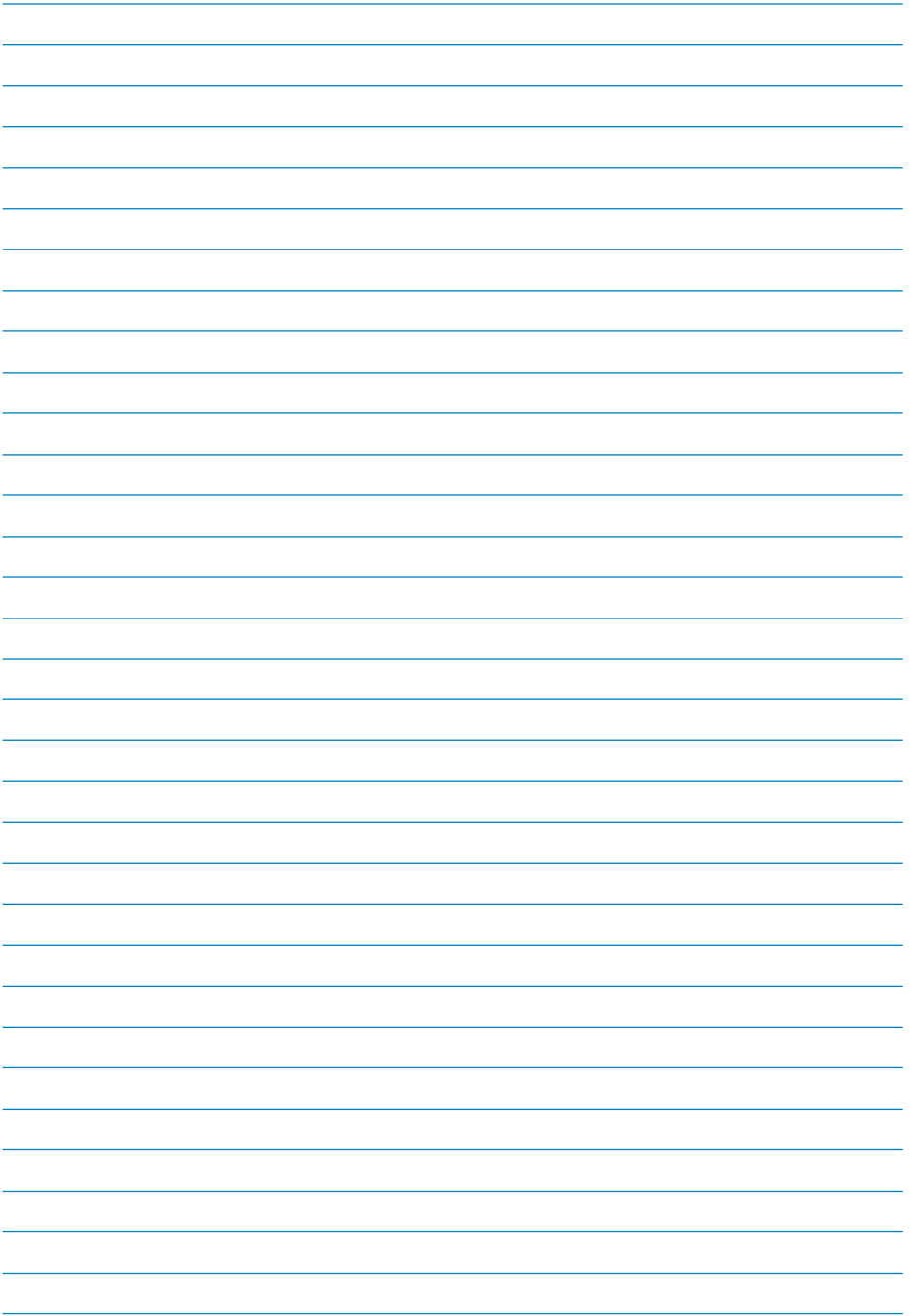
Customer support:

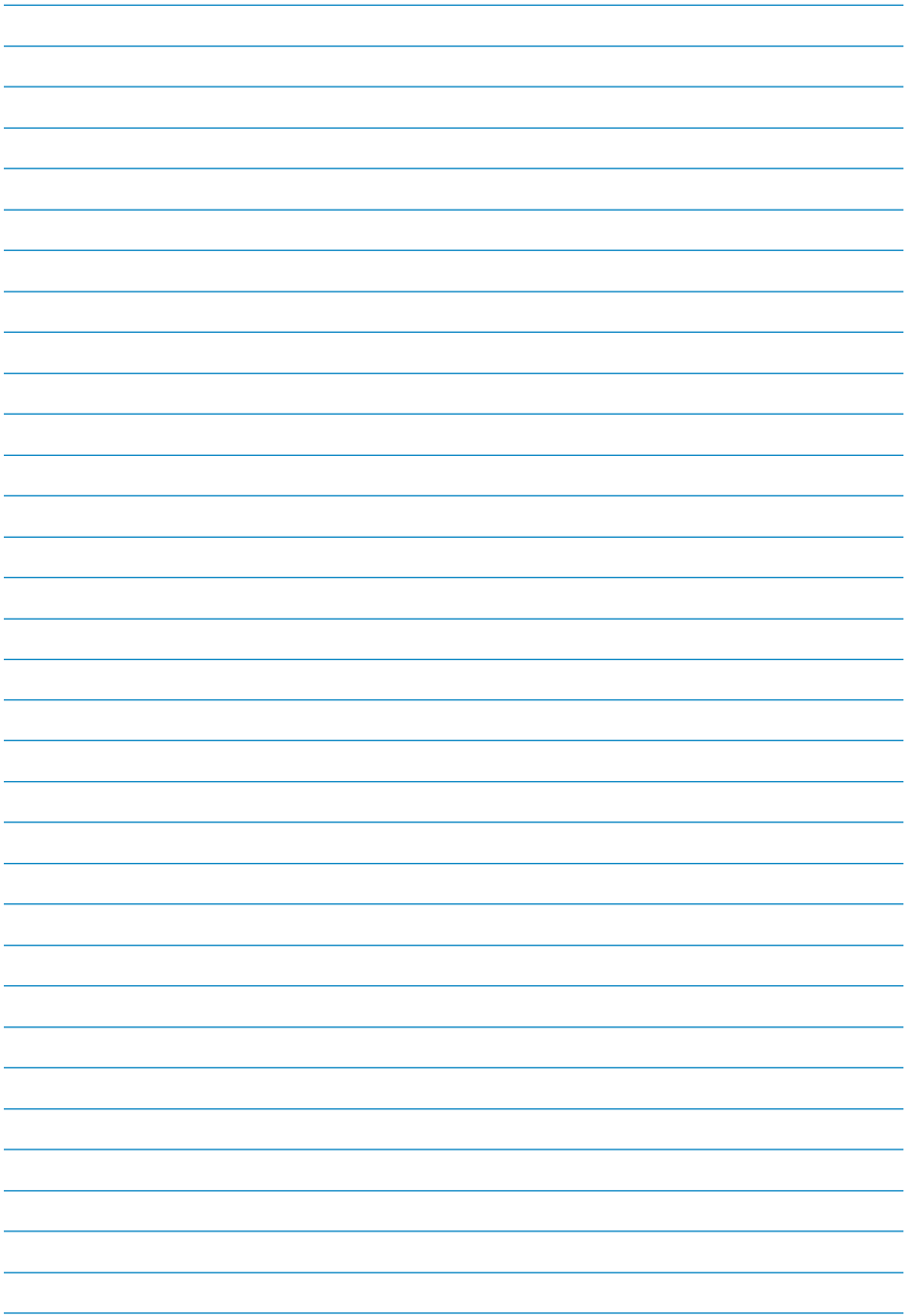
Yasin Pty Ltd. PO Box 2, Ermington NSW 1700, Australia

www.arovec.com.au

support@arovec.com.au

Please provide your order number when you contact customer support.







www.arovec.com.au