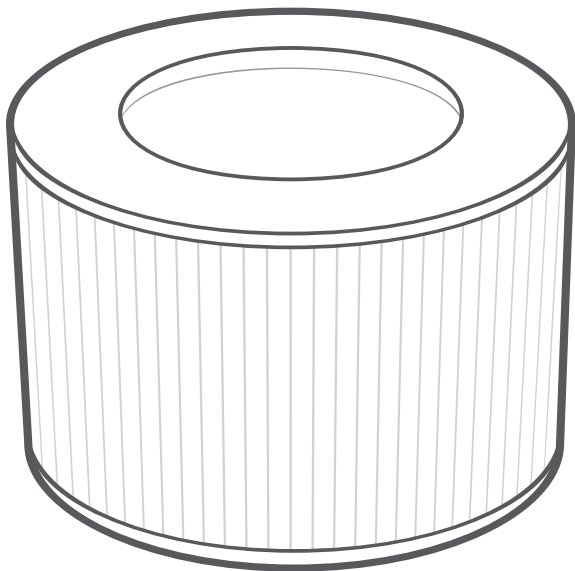


Air Purifier Replacement Filter

Model: AV-P300-RF



Please read this user manual thoroughly before using the product.

**Fit for AV-P300
Black & White**

TABLE OF CONTENTS



Introduction	4
Parts Name	5
Replacing The Filter	6
Cleaning & Care	9
Disposal	9
Customer Support - Australia	10

PACKAGE CONTENTS

- 1 x Replacement Filter AV-P300-RF
- 1 x User Manual

THANK YOU FOR CHOOSING TO BUY AN AROVEC AIR PURIFIER REPLACEMENT FILTER

We are here to help you with any questions.
Customer Support - AUSTRALIA

-  www.arovec.com.au
-  support@arovec.com.au
-  [@aroveclifestyle](https://www.instagram.com/aroveclifestyle)

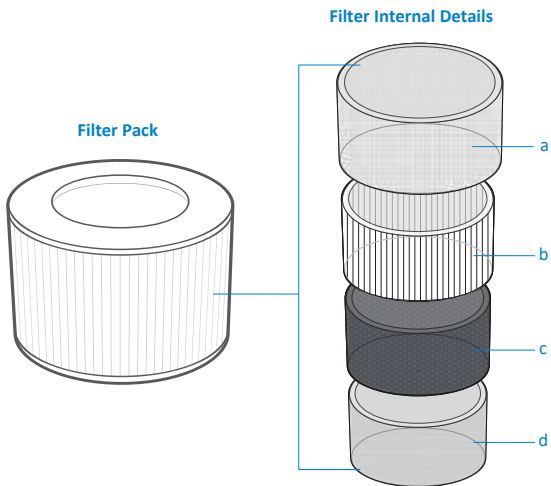
INTRODUCTION

High Efficiency Filtration System: This replacement filter contains multiple stage filtration system, which filters out 99.97% airborne harmful pollutants including particulate matters PM2.5, VOCs, dust, pollen, odour, allergens, cigarette & other smokes, cooking smell, pet dander & smell, mould, bacteria and other airborne contaminants as small as 0.3 μ m with 100% ozone free safe operation.

- 1. Preliminary Filter:** Captures large particles such as dust, pet dander and hair.
- 2. True HEPA Filter:** High grade H13 True HEPA Filter traps fine particles such as PM2.5, dust mites, allergens, airborne bacteria, pollen, mould and other airborne contaminants as small as 0.3 μ m.
- 3. High-Efficiency Activated Carbon Filter:** adsorbs various odours and smokes such as cigarette smoke, fumes, cooking smell, pet odours, hazardous gases and VOCs.
- 4. Polypropylene Net:** Extra protection of Activated Carbon Filter for its enhanced efficiency.

PARTS NAME

1. Filter Pack
 - a. Preliminary Filter
 - b. H13 True HEPA Filter
 - c. Activated Carbon Filter
 - d. Polypropylene Net



REPLACING THE FILTER

The (Filter Reset ●) will light up to remind you to replace the filter.

DO NOT wash or reuse the filter. Only use Arovec AV-P300-RF replacement filter when changing the filter is required. This will help your air purifier to work effectively and last longer.

Replacement filter is available at www.ovec.com.au

When to Replace the Filter:

- It's best to change the filter every 4-5 months (3000 hours used). You may need to change the filter more often or less often, depending on how much you use your air purifier and on how much pollution is in the air.
- You don't need to wait for the (Filter Reset ●) to turn ON for changing the filter. You may need to change the filter if you notice any of the following:
 - Increased noise from the air purifier when it is switched ON.
 - No effective difference in air quality.
 - Decreased airflow.
 - Unusual odours.
 - Clogged filter.

Steps for Replacing the Filter:

Follow these steps to replace the filter:

1. Turn OFF and unplug the air purifier.
2. Turn the air purifier upside down on a soft cloth. [Figure 1.1]
3. Turn the base cover anticlockwise to unlock the cover. [Figure 1.1]
4. Remove the base cover. [Figure 1.2]
5. Remove the used filter from the air purifier. [Figure 1.2]

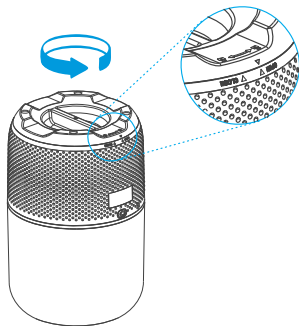


Figure 1.1

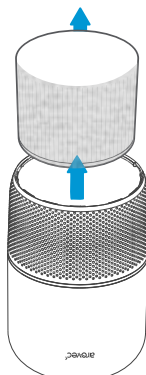


Figure 1.2

6. Clean any remaining dust or hair inside the air purifier with a vacuum cleaner. DO NOT use water or any liquids to clean the air purifier. [Figure 1.3]
7. Remove the new filter from its packaging. [Figure 1.4]

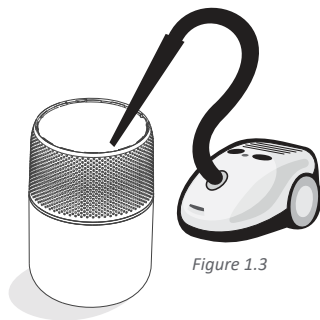


Figure 1.3

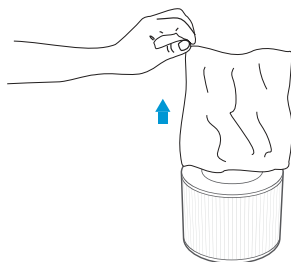


Figure 1.4

8. Place the new filter into the air purifier. [Figure 1.5]

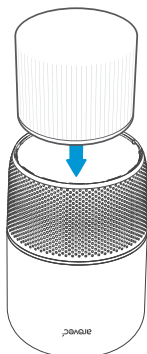


Figure 1.5

9. Put the base cover back on and turn it clockwise to lock the cover. [Figure 1.6]

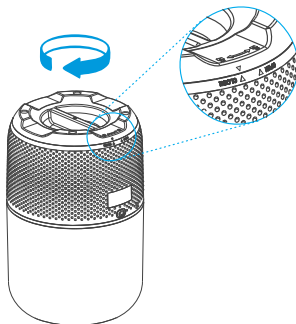


Figure 1.6

Resetting the Air Purifier After Filter Replacement:

You need to reset the air purifier in two conditions.

1. If the filter was replaced after the (Filter Reset ●) light up:
 - Turn ON the air purifier.
 - Press and hold (⏻) for 3-5 seconds.
 - The (Filter Reset ●) light should turn OFF, which indicates that the air purifier has been reset.
 - You can use the air purifier with the new filter.
2. If the filter was replaced before the (Filter Reset ●) light up:
 - Plug in the air purifier after filter replacement, but do not turn ON the air purifier.
 - Press and hold (⏻) for 3-5 seconds to light up the (Filter Reset ●).
 - Press and hold again (⏻) for 3-5 seconds to turn OFF the (Filter Reset ●), the reset is now complete.
 - You can turn on and use the air purifier with the new filter.

CLEANING & CARE

- Turn OFF and unplug the air purifier before you clean it.
- Wipe down the outside of air purifier regularly with a soft and clean cloth.
- **DO NOT** use any harsh cleaning agents e.g., bleach or alcohol to clean any part of the air purifier.

Cleaning the filter

- To increase the efficiency and life of the filter, clean it at least once a month using a soft brush or vacuum cleaner to remove large particles, hair and dust. Do not clean the filter with water or any other liquids. [Figure 2.1]

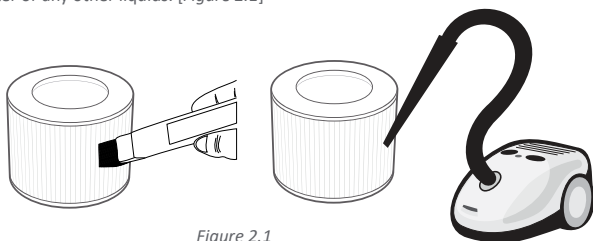


Figure 2.1

STORAGE

- If not using the air purifier for an extended period of time, it is a good idea to wrap the air purifier in plastic packaging and store in a dry place to avoid moisture damage.
- It is not recommended to store the used filter for long period of time.
- Store the air purifier in an upright position. Do not store anything on the top of air purifier.

DISPOSAL



To prevent possible harm to the environment or human health from uncontrolled waste disposal, separate the unneeded air purifier and its related accessories from other types of wastes. Ask your local council where to dispose of your air purifier and its related accessories. You should not throw your air purifier and its related accessories away with the daily normal household waste.

CUSTOMER SUPPORT - AUSTRALIA

Feel free to contact our helpful customer support team with any questions or inquiries regarding your product.

Your satisfaction is our priority.

Contact:

Ausbrilliant Brands

PO Box2, Ermington NSW 1700, Australia

www.rovec.com.au

support@rovec.com.au

Please provide your order number when you contact customer support.

Alternatively, you may contact us using the contact us form on the website.



www.arovec.com.au

Questions or Concerns?

support@arovec.com.au

V4.1121