



INSTALLATION GUIDE



HONDA / ACURA
ADJUSTABLE SHIFT KNOB

PRL INSTALLATION OVERVIEW

PRODUCT: PRL-KNOB-KIT PRL Motorsports Adjustable Shift Knob & Collar

FITMENT: All M10 x 1.5 Shifters (Honda / Acura Factory Shifter Spec)

INSTALLATION TIME: 20 Minutes

NOTE: THIS ITEM DOES NOT REQUIRE AN ECU RE-CALIBRATION.

Please check that all components that are listed in the parts list have been supplied to you, and are correct. If you require any assistance or are missing components please email: support@prlmotorsports.com. Please verify with a customer service representative before installation or returning the product.

PRODUCT DISCLAIMER:

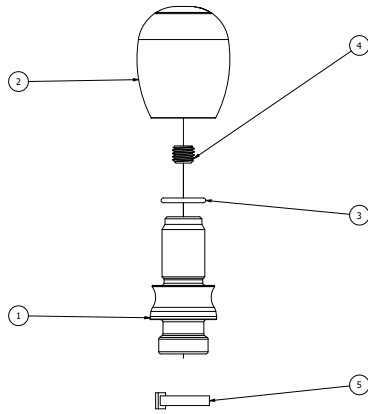
PRL Motorsports is not responsible for any vehicle damage or personal injury that may occur due to an installation error, product misuse, or removal of PRL Motorsports products.

PRL Motorsports highly suggests that a trained professional conduct the installation on all products. PRL Motorsports is not responsible for damaged products due to incorrect installation.

REQUIRED TOOLS:

Flathead Screwdriver
Trim Removal Tool (Optional)
Snips
8mm Hex/Allen Wrench
14mm Wrench





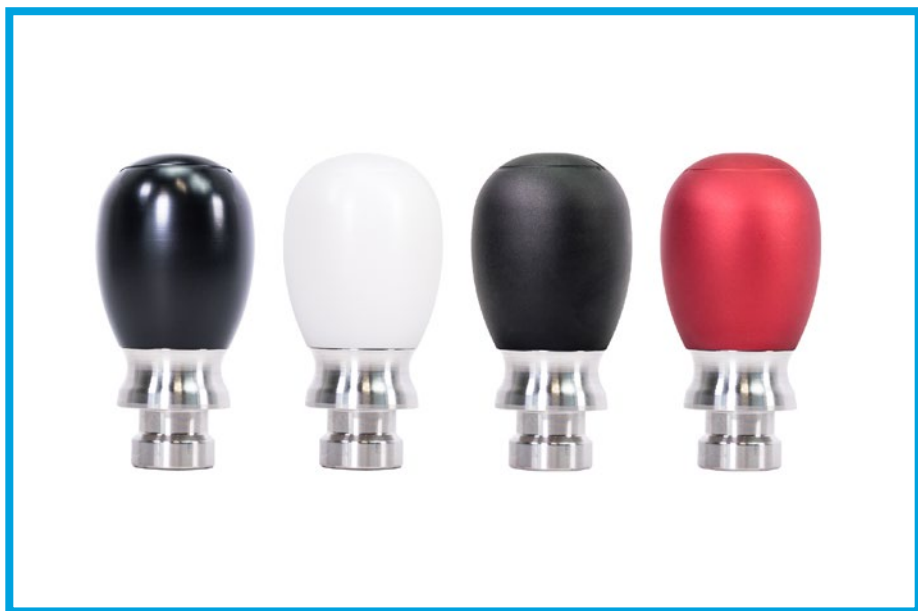
COMPONENT LIST

#	PART #	QTY	DESCRIPTION
1	RAW-SHIFT-BASE	1	PRL Motorsports Adjustable Collar Shifter Base
2	RAW-SHIFT-KNOB	1	PRL Motorsports Shift Knob
3	MCM-9751K118 / MCM-9751K119	1	908 OR 909 Buna-N O-Ring
4	MCM-93245A658	1	M10x1.5x8mm Set Screw
5	COBRA-L8SOC	1	Low Profile Zip Tie

Before Beginning Your Installation:

1. Turn off the ignition. Ensure that the vehicle is in park, with the parking brake engaged. Place the vehicle into neutral. It is not necessary to remove the battery cables for this installation.

NOTE: Disconnection of the negative battery cable erases pre-programmed electronic memory. We recommend saving any memory settings before disconnecting the negative terminal. Some radios will require an anti-theft code to be entered after the negative battery cable is reconnected.



Preparing Your Adjustable Shift Knob & Collar

2. Reference the parts list and ensure all components are enclosed. If something is missing, please contact PRL Customer Support.

3. Place the PRL Adjustable Shift Knob & Collar on a soft surface as to not scratch the surface of the shift knob itself. You will have to remove interior trim pieces to access the shift knob assembly. Please take care to not handle the trim pieces too roughly. The installation process doesn't vary for the delrin versus aluminum material. Your trim/center console removal process will vary depending on the model of vehicle. Adjustment will be identical.

4. There are three components to the shift knob assembly. There is the knob itself (finish of your choice), adjustable collar, and the set screw that locks the collar.



5. To begin the installation, you will push down on the shift boot to separate the plastic trim collar from the base of the factory shift knob.



6. Take your 14mm wrench, turn the nut at the base of the shifter right, while rotating the shift knob left to loosen them.



7. Once the factory shift knob is removed, unthread the nut from the shifter itself. This will not be re-used with the PRL Shift Knob.



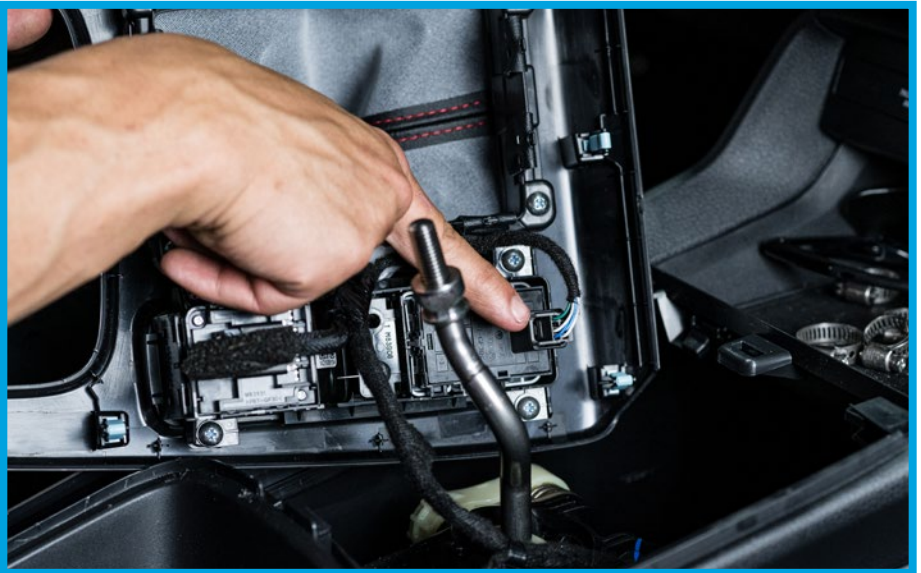
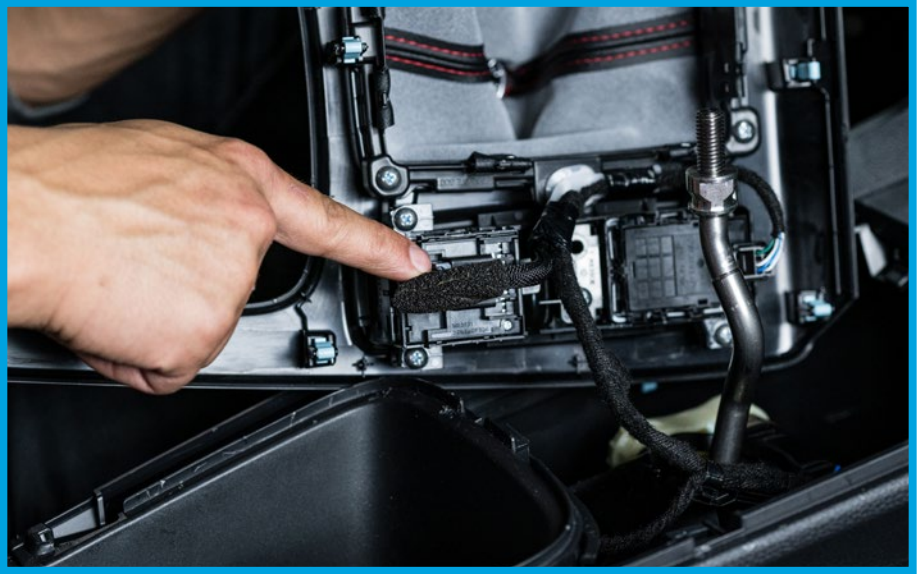
8. To remove the trim, lightly grip the edges or use a trim removal tool. Slowly wiggle the trim surround till it loosens. Each side should simply pop loose with light force.



9. All three sides should pop free of their mounting points, but do not pull the trim fully upwards/to the side yet. (2022 Civic/2023+ Integra trim pictured)



10. Remove any sensors that are clipped into the center console/trim piece. This will vary depending upon your vehicle. The 11th Gen Civic has (2) sensors. Simply press and unclip the harness from their mounted locations.



11. Cut the zip tie holding the factory plastic collar inside of the shift boot. This plastic collar will not be re-used with the PRL Shift Knob.



12. Place the PRL Adjustable Collar onto the factory shifter assembly. Place it with the threaded end and o-ring facing upwards.



13. Test the knob by threading it onto the collar. This allows you to ensure that the logo will be facing towards you properly. Rotate the collar to ensure that is straight.



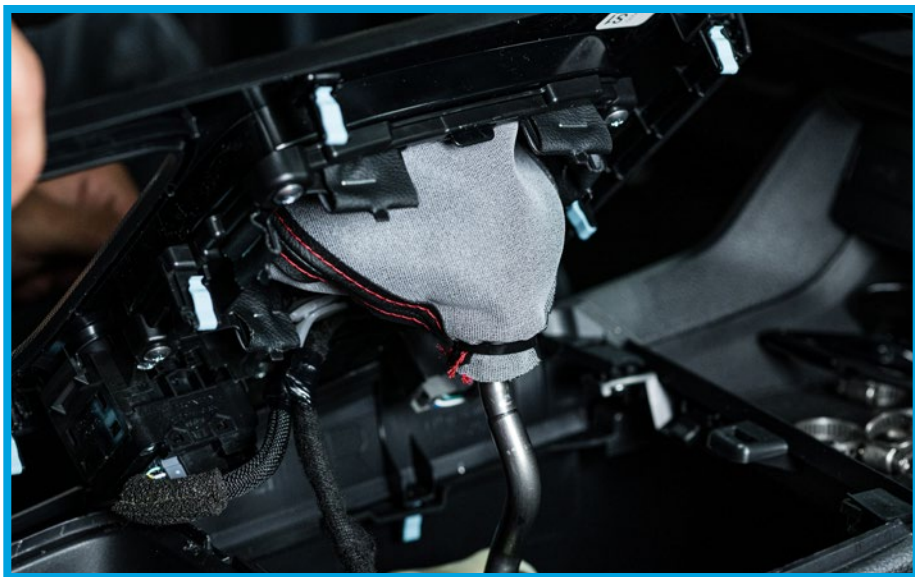
14. Once aligned, hold the collar tightly as you remove the knob. Place the set screw down the collar and tighten it into place.



15. Remove the shift knob, thread the shifter through the hole in the mouth of the shift boot. Align it at the base of the PRL Adjustable Collar.



16. Flip the boot inside out, line up the shift boot and affix the provided low profile zip tie tightly around the shift boot. Snip off the excess.



17. Once the boot is situated, flip it back to normal, and re-install the knob. Verify that the knob is still facing the correct orientation. Adjust it as needed.



18. If everything is correct and tightened securely, then carefully reinstall your trim / center console. Now it's time to drive!



Road Testing Your PRL Shift Knob & Collar

1. Start the vehicle with the transmission in neutral and the emergency brake engaged. Assess to make sure of any possible issue(s) and then make any subsequent adjustments as they are needed.
 2. Test drive the vehicle to ensure everything is in working order.
 3. If after the road testing, everything is good to go, enjoy your PRL Shift Knob
- Thank you for being a part of the #PRLARMY.

If you have any questions/concerns please reach out to us at:
support@PRLMotorsports.com

Please provide a full description of your issue, ideally with any pertinent images or video clips that can help our team address the issue.

Please note: All support tickets are addressed during business hours and in order of received.

As stated at the beginning of this guide, the PRL Shift Knob (or any shift knob assembly) do not require tuning to benefit from the advertised gains and performance.

Required Maintenance

PRL Motorsports thoroughly recommends visually inspecting your products during any routine maintenance like oil changes, tire rotations, and filter changes or cleanings. Please make sure to check your connections on all mounted parts periodically to ensure that they have not come loose over time. When it comes to cleaning and maintaining that great finish, please utilize something a simple cleaner/quick detailer spray and a soft cloth. Please do not use any type of abrasive cleaning tool on the shift knob to clean/polish it.



1400 RANDALL COURT - UNIT 104
EXPORT, PENNSYLVANIA 15632

www.PRLMotorsports.com

Follow Us!
PRLMotorsports

