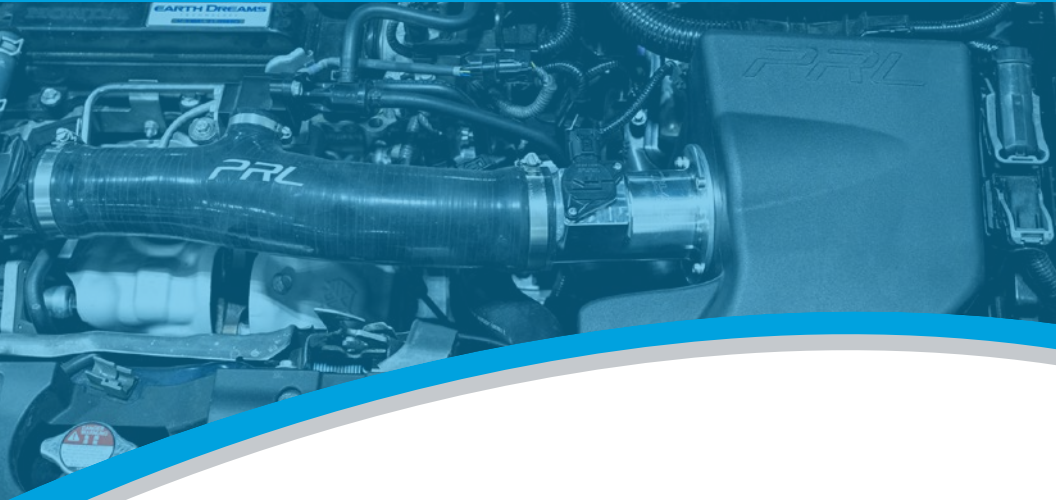




## INSTALLATION GUIDE



HONDA ACCORD 1.5T (2018+)  
HIGH VOLUME INTAKE

# PRL INSTALLATION OVERVIEW

PRODUCT: PRL-HA10-15T-INT-HVI PRL MOTORSPORTS HIGH VOLUME INTAKE

FITMENT: 2018+ Honda Accord 1.5L Turbo

INSTALLATION TIME: Approximately 30 - 45 minutes

NOTE: THIS ITEM DOES NOT REQUIRE AN ECU RE-CALIBRATION.

Please check that all components that are listed in the parts list have been supplied to you, and are correct. If you require any assistance or are missing components please email: [support@prlmotorsports.com](mailto:support@prlmotorsports.com). Please verify with a customer service representative before installation or returning the product.

## PRODUCT DISCLAIMER:

United States 48 State Compliant:

California/New York Residents please see Prop 65.

This is a Race Only product that is to be used solely for competition, it cannot be used on vehicles that are operated on public streets, roads or highways. Its use is limited to closed-course and open-course racing that is formally sanctioned by a recognized racing organization. Any other use including recreational use could be in violation of local, state and federal laws.

PRL Motorsports is not responsible for any vehicle damage or personal injury that may occur due to an installation error, product misuse, or removal of PRL Motorsports products.

PRL Motorsports highly suggests that a trained professional conduct the installation on all products. PRL Motorsports is not responsible for damaged products due to incorrect installation.

## REQUIRED TOOLS:

Ratchet

Extension (3" & 12" Length)

10mm Socket

Phillips Head Screw Driver

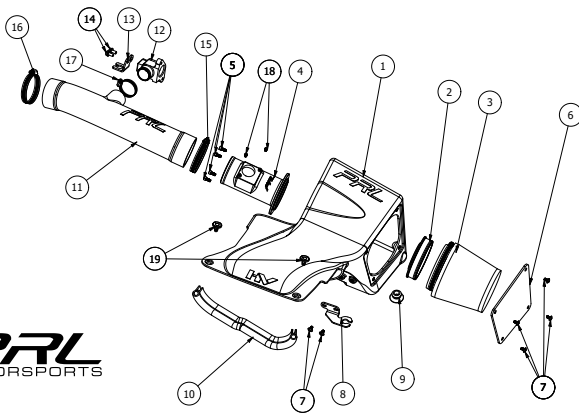
Flat Head Screw Driver

Magnetic Pickup Tool (Recommended)

Clip Removal Tool (Optional)

Pliers (Optional)





## COMPONENT LIST

#	PART #	QTY	DESCRIPTION
1	RAW-HA10-INT-ROTOBOX	1	2018+ Accord 1.5T High Volume Airbox
2	RAW-HA10-15T-INT-RING-HVI	1	Accord 1.5T Filter Adapter
3	PRL-AF-4258	1	PRL 4" Inlet Air Filter Assembly
4	RAW-HA10-15T-MAF-HVI	1	2018+ Accord 1.5T MAF Housing
5	MCM-91292A125	4	M5 x 12mm Socket Head Cap Screw
6	RAW-HA10-ROTOCOVER	1	2018+ Accord High Volume Side Panel
7	MCM-90909A722	6	M5 x 10mm Flanged Button Head Cap Screw
8	RAW-HA10-INT-BKT-HVI-V2	1	2018+ Accord High Volume Mounting Bracket
9	PRL-RABG	1	PRL Rubber Mounting Grommet
10	MCM-1120A322	1	Rubber Seal (1-Foot)
11	SIL-HA10-15T-INT-HVI-HOSE	1	2018+ Accord 1.5T High Volume Silicone Hose
12	HA10-15T-INT-EVAP	1	EVAP Fitting Assembly
13	RAW-HA10-15T-INT-S1-BKT	1	EVAP Fitting Assembly Mounting Bracket
14	BOLT-M6x1x12-FB	2	M6 x 12mm Flange Bolt
15	IFE-60-80-12	1	IFE 60-80-12 Hose Clamp
16	IFE-50-70-12	1	IFE 50-70-12 Hose Clamp
17	IFE-30-45-9	1	IFE 30-45-9 Hose Clamp
18	MCM-91292A107	2	M4 x 6mm Socket Head Cap Screw
19	DISCO-13091	2	Plastic Rivet

## Before Beginning Your Installation:

1. Turn off the ignition. Loosen battery terminal and disconnect the negative battery terminal cable. Allow the vehicle to sit for a minimum of 5 minutes to drain any remaining charge from the charging system.

**NOTE:** Disconnection of the negative battery cable erases pre-programmed electronic memory. We recommend saving any memory settings before disconnecting the negative terminal. Some radios will require an anti-theft code to be entered after the negative battery cable is reconnected.



## Preparing Your High Volume Intake

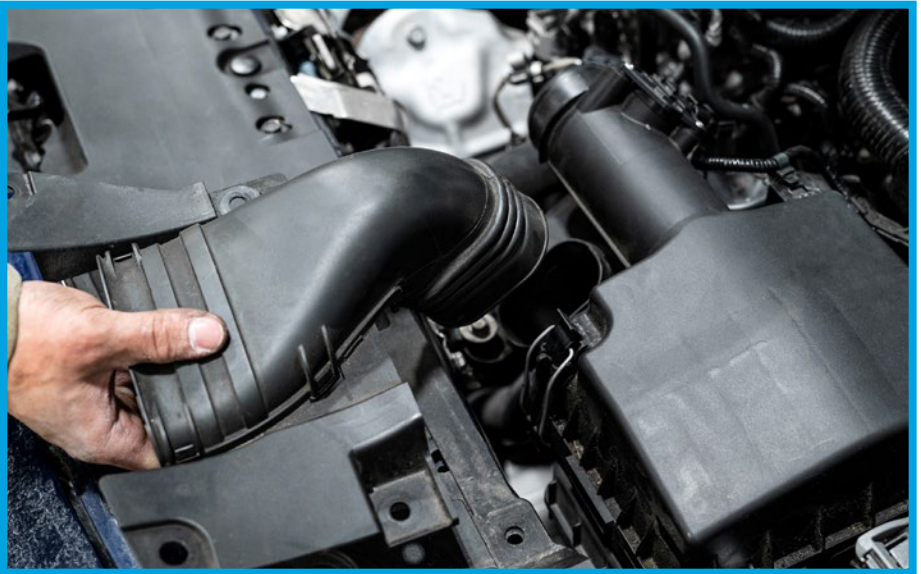
2. Before beginning any OEM component removal, please reference the parts list and ensure all components are enclosed. If something is missing, please contact PRL Customer Support.

3. The factory airbox will need to be removed to install the High Volume Intake. This design utilizes the hood style scoop duct that directs the coolest air into your intake.

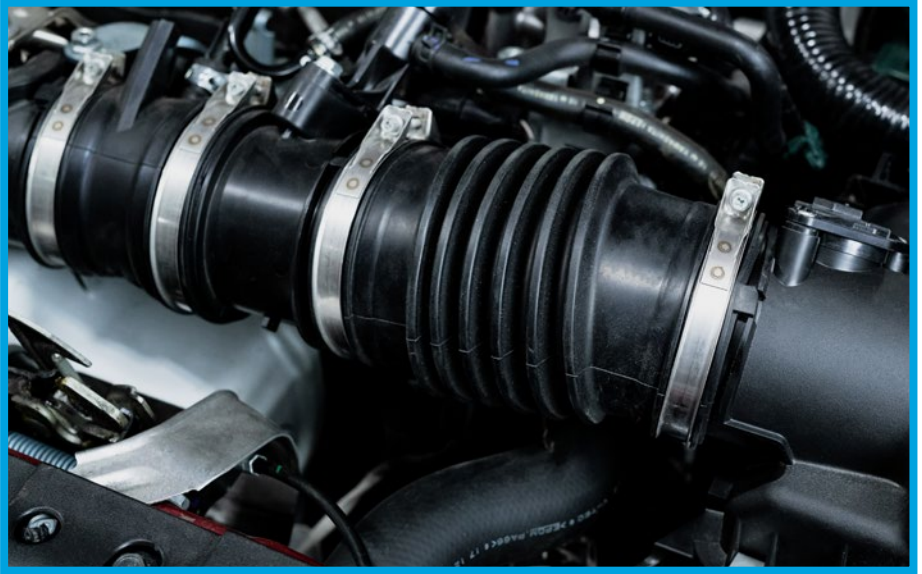
4. You will need to remove the factory air duct that is mounted into the top of the core support. Remove the (4) factory plastic clips



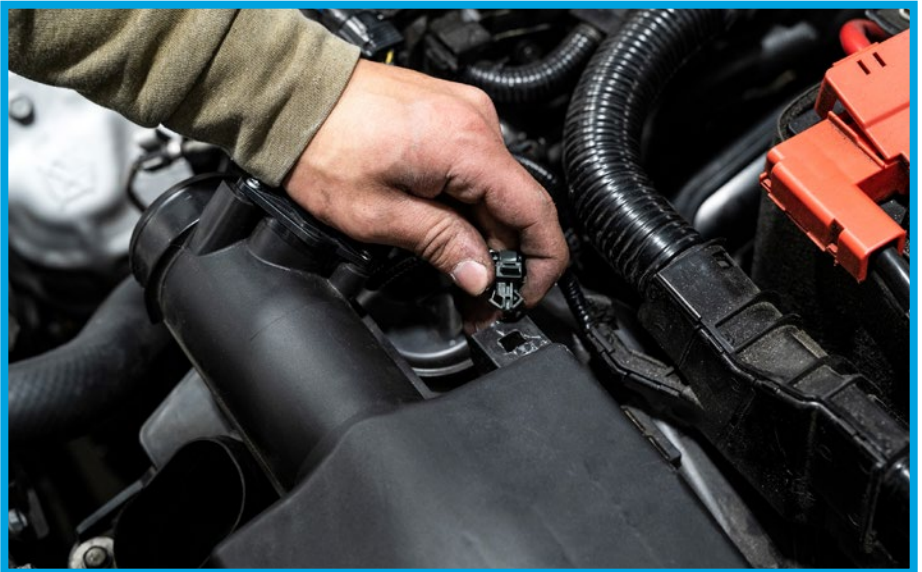
5. Once the clips are removed, you can remove the factory air intake duct entirely. These clips will not be re-used.



6. The factory corrugated intake hose will need to be removed. Loosen the (2) factory clamps to remove it from the factory airbox.



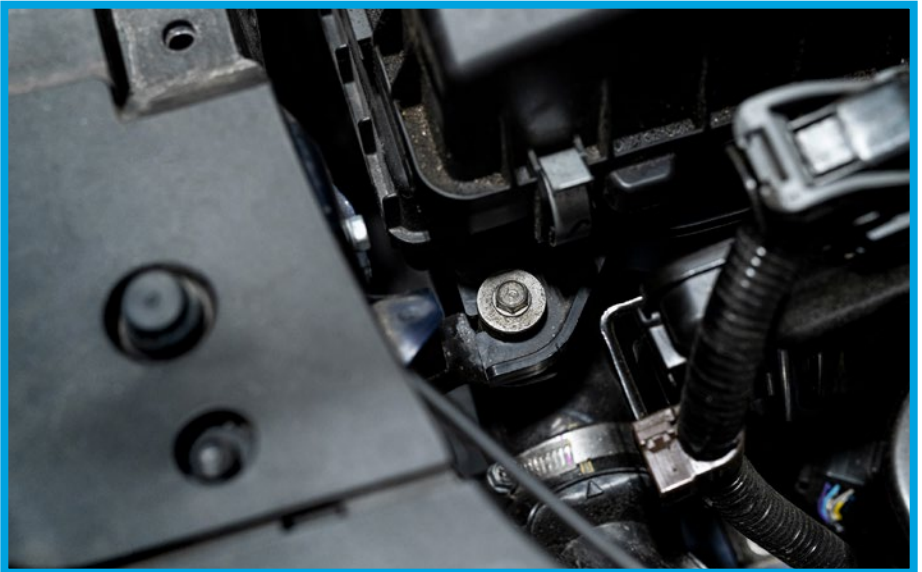
7. Unclip the MAF Sensor harness from the tab holding it into place and the MAF sensor itself. Remove the MAF sensor from the factory airbox.



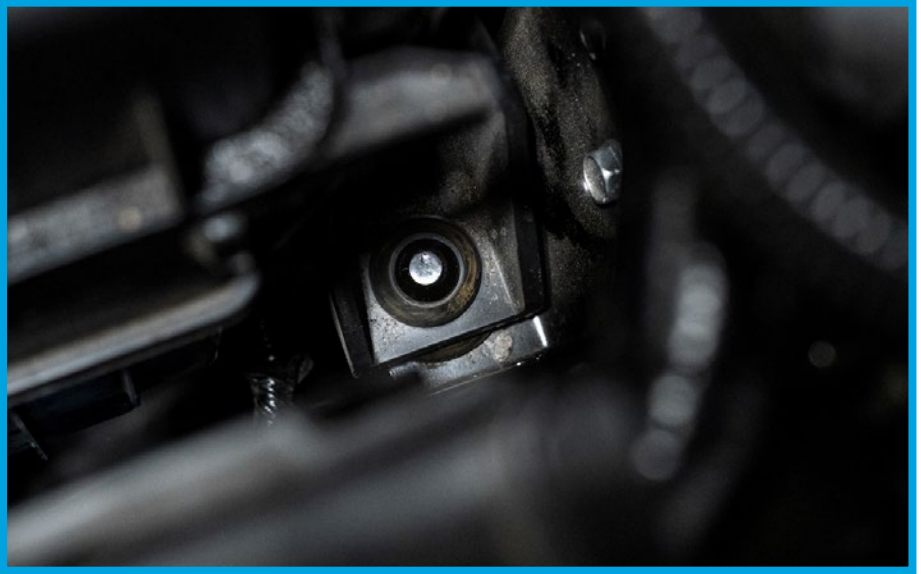
8. Remove the (1) factory 10mm bolt mounting the factory airbox to the core support. The bracket may be removed as well, as it is not utilized.



9. Remove the (1) factory 10mm bolt on the front right side of the factory airbox. This bolt will be reused in the PRL mounting bracket.



10. Wiggle the airbox free, pulling the airbox from the factory mounting post that is located on the back right side of the airbox.



11. Attach the PRL MAF to the airbox with the provided M5x12mm screws, and seat the PRL cone filter onto the inner MAF ring. Tighten and place the lid on.





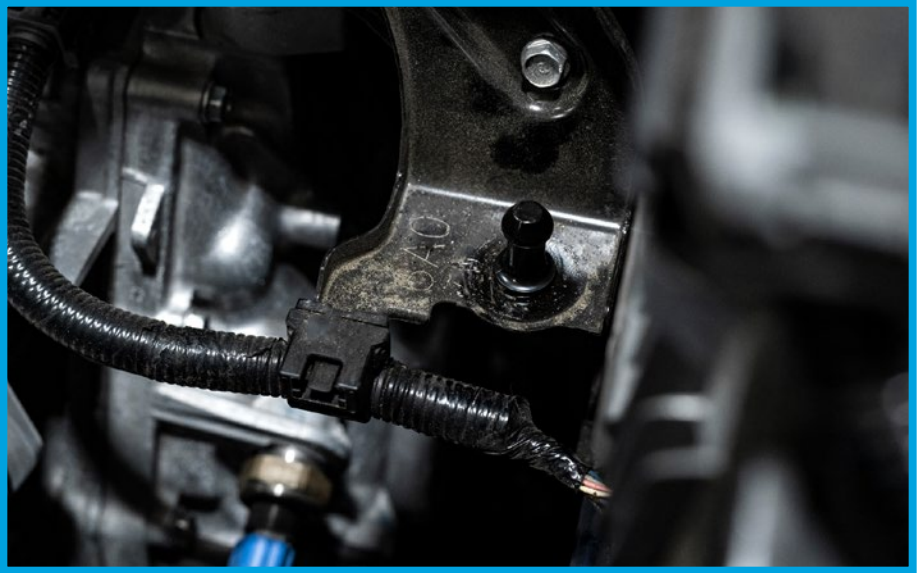
12. Attach the provided mounting bracket and place the factory rubber grommet into the mounting bracket. Place the provided rubber grommet in the bracket.



13. Align and then press the provided rubber seal along the rim of the duct of the airbox. This ensures a perfect seal for the airflow into the intake.



14. Put the provided rubber grommet into the bottom of the airbox. Seat the airbox onto the factory mounting post.



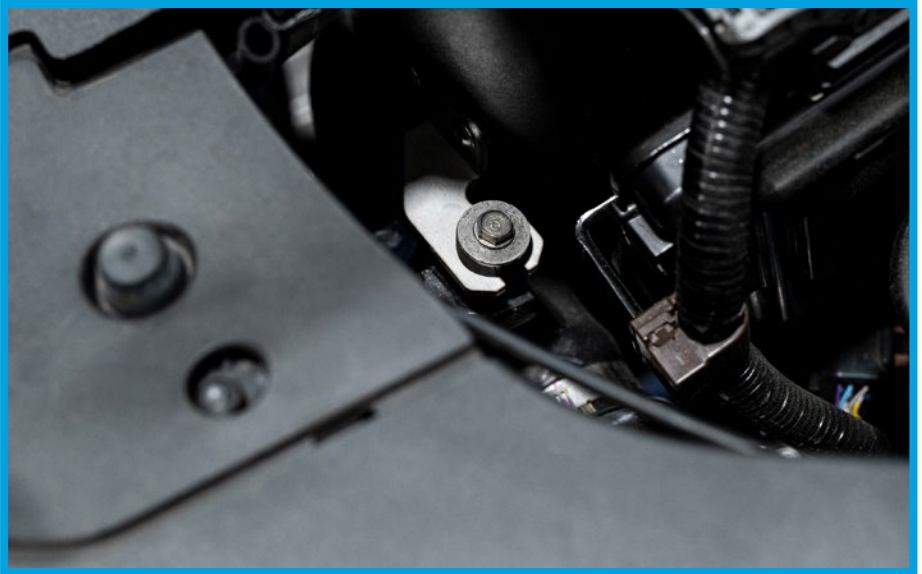
15. Place the (3) provided hose clamps onto the silicone and seat the EVAP fitting with the mounting bracket attached in the silicone as well.



16. Fit the PRL silicone onto the PRL MAF housing, and then attach the factory EVAP onto the PRL EVAP fitting. Tighten down the (2) factory bolts.



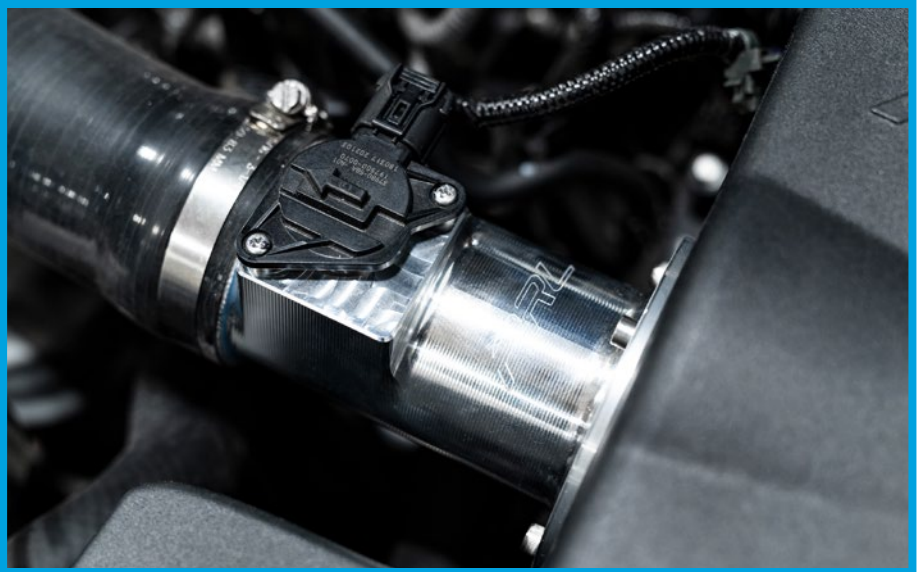
17. Replace the (1) factory 10mm bolt on the front right side of the airbox in the PRL Mounting bracket and factory rubber grommet.



18. Push the (2) provided plastic rivets into place to affix the air duct and fully stabilize the airbox against the core support.



19. Place the MAF sensor into the PRL MAF housing and tighten it into place. Be careful to not over-tighten and damage the sensor.



## Road Testing Your PRL High Volume Intake

1. Start the vehicle with the transmission in neutral and the emergency brake engaged. Assess to make sure of any possible issue(s) and then make any subsequent adjustments as they are needed.
2. Test drive the vehicle to ensure everything is in working order.
3. If after the road testing, everything is good to go, enjoy your PRL High Volume Intake! Thank you for being a part of the #PRLARMY.

If you have any questions/concerns please reach out to us at:  
[support@PRLMotorsports.com](mailto:support@PRLMotorsports.com)

Please provide a full description of your issue, ideally with any pertinent images or video clips that can help our team address the issue.

Please note: All support tickets are addressed during business hours and in order of received.

As stated at the beginning of this guide, the PRL High Volume Intake has been specifically designed to be 100% compatible with the factory ECU calibration. No tuning is required to benefit from the advertised gains and performance.

## Required Maintenance

PRL Motorsports thoroughly recommends visually inspecting the air filter screen inside the HVI at every oil change. It is required to clean the air filter element whenever the screen is no longer visible or at a 30,000 mile interval. When used in a higher dust/arid climate or varied terrain environments, the air filter will require cleaning more often. To clean and re-oil, our #2801 Filter Cleaning & Recharge kits can be purchased direct on our website, or via an authorized PRL Motorsports dealer.

## Filter Recharging Guide:

- 1. Pre-Cleaning:** Tap the filter or use canned air/compressor to remove any excess debris from the filter. Be careful to not damage the filter.
- 2. Apply Cleaner:** Spray the filter with the special cleaning solution provided in the kit and allow the solution to soak in for at least 15 minutes.
- 3. Rinsing:** Rinse the filter with warm water, clean side to dirty side to flush the dirt and debris outwards from the filter.
- 4. Drying:** Allow the filter to dry naturally. Try to avoid heat to prohibit any shrinkage that could occur in the cotton present in the filter.
- 5. Oil Application:** Re-oil the filter using the filter oil that is supplied in the kit. It is recommended to use a single spray per 2" of filter media. Do not over oil.



1400 RANDALL COURT - UNIT 104  
EXPORT, PENNSYLVANIA 15632

[www.PRLMotorsports.com](http://www.PRLMotorsports.com)

Follow Us!  
PRLMotorsports

