



INSTALLATION GUIDE



HONDA ACCORD 2.0T (2018+)
HIGH VOLUME INTAKE

PRL INSTALLATION OVERVIEW

PRODUCT: PRL-HA10-20T-INT-HVI-V2 PRL MOTORSPORTS HIGH VOLUME INTAKE

FITMENT: 2018+ Honda Accord 2.0L Turbo

INSTALLATION TIME: Approximately 30 - 45 minutes

NOTE: THIS ITEM DOES NOT REQUIRE AN ECU RE-CALIBRATION.

Please check that all components that are listed in the parts list have been supplied to you, and are correct. If you require any assistance or are missing components please email: support@prlmotorsports.com. Please verify with a customer service representative before installation or returning the product.

PRODUCT DISCLAIMER:

United States 48 State Compliant:

California/New York Residents please see Prop 65.

This is a Race Only product that is to be used solely for competition, it cannot be used on vehicles that are operated on public streets, roads or highways. Its use is limited to closed-course and open-course racing that is formally sanctioned by a recognized racing organization. Any other use including recreational use could be in violation of local, state and federal laws.

PRL Motorsports is not responsible for any vehicle damage or personal injury that may occur due to an installation error, product misuse, or removal of PRL Motorsports products. PRL Motorsports highly suggests that a trained professional conduct the installation on all products. PRL Motorsports is not responsible for damaged products due to incorrect installation.

REQUIRED TOOLS:

Ratchet

Extension (3" & 12" Length)

10mm Socket

Phillips Head Screw Driver

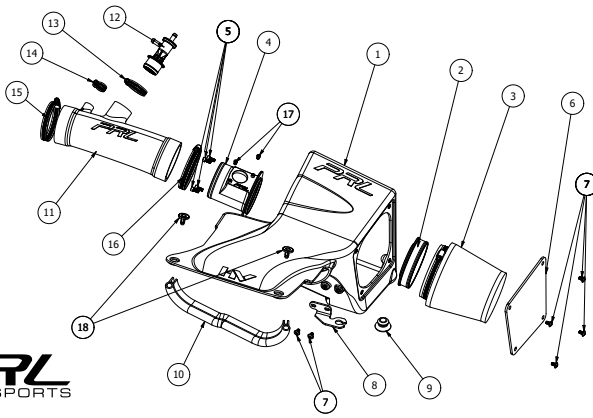
Flat Head Screw Driver

Magnetic Pickup Tool (Recommended)

Clip Removal Tool (Optional)

Pliers (Optional)





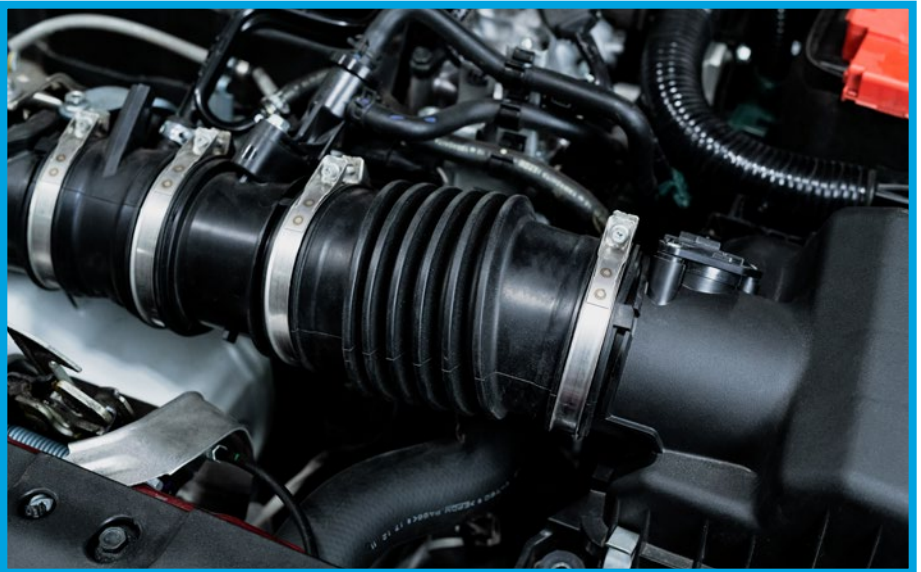
COMPONENT LIST

#	PART #	QTY	DESCRIPTION
1	RAW-HA10-INT-ROTOBOX	1	2018+ Accord 2.0T High Volume Airbox
2	HA10-20T-INT-HVI-BASE	1	Accord 2.0T Filter Adapter
3	PRL-AF-4258	1	PRL 4" Inlet Air Filter Assembly
4	HA10-20T-INT-HVI-MAF	1	2018+ Accord 2.0T MAF Housing
5	MCM-91292A125	4	M5 x 12mm Socket Head Cap Screw
6	RAW-HA10-ROTOCOVER	1	2018+ Accord High Volume Side Panel
7	MCM-90909A722	6	M5 x 10mm Flanged Button Head Cap Screw
8	RAW-HA10-INT-HVI-BKT	1	2018+ Accord High Volume Mounting Bracket
9	PRL-RABG	1	PRL Rubber Mounting Grommet
10	MCM-1120A322	1	Rubber Seal (1-Foot)
11	SIL-HA10-20T-INT-HVI-HOSE-V2	1	2018+ Accord 2.0T High Volume Silicone Hose (V2)
12	RAW-HCR-INT-EVAP-ASS	1	EVAP Fitting Assembly
13	IFE-30-45-9	1	IFE 30-45-9 Hose Clamp
14	IFE-12-22-9	1	IFE 12-22-9 Hose Clamp
15	IFE-60-80-12	1	IFE 60-80-12 Hose Clamp
16	IFE-70-90-12	1	IFE 70-90-12 Hose Clamp
17	MCM-91292A107	2	M4 x 6mm Socket Head Cap Screw
18	DISCO-13091	2	Plastic Rivet

4. You will need to remove the factory air duct that is mounted into the top of the core support. Remove the (4) factory plastic clips that hold it into place.



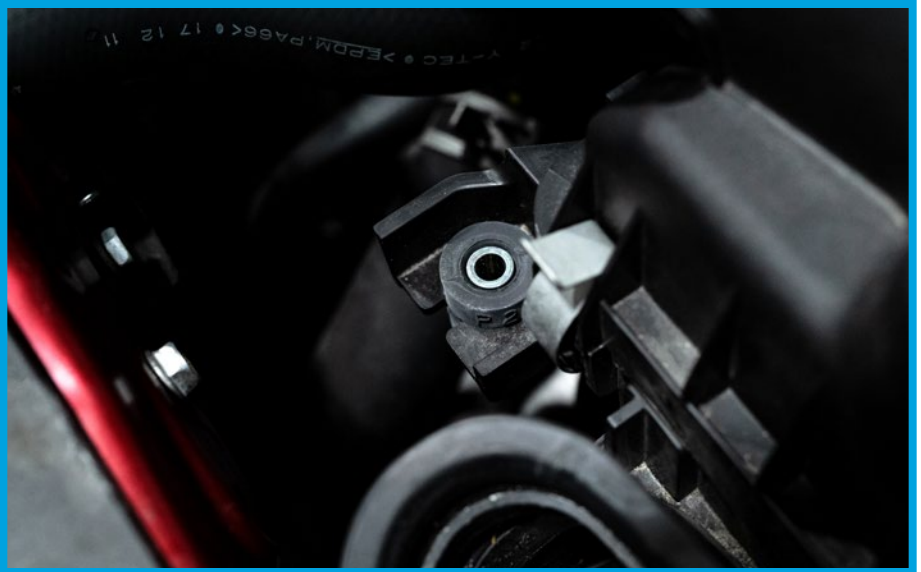
5. The factory corrugated intake hose will need to be removed. Loosen the (2) factory clamps to remove it from the factory airbox.



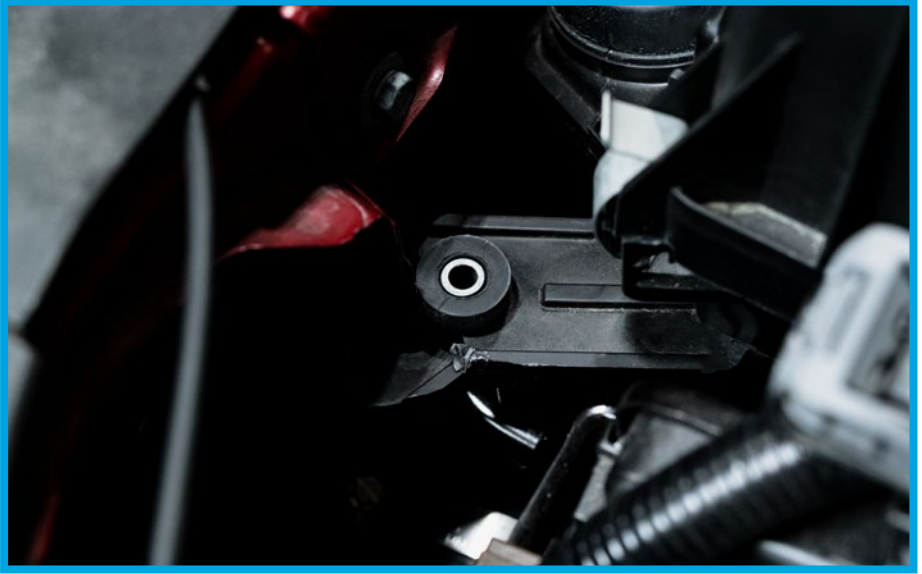
6. Unclip the MAF Sensor harness from the clip holding it into place and remove it from the MAF Sensor. Remove the MAF sensor from the factory airbox.



7. Remove the (1) 10mm bolt on the front left side of the airbox. The bracket that holds it to the core support can also be removed, as it is not used.



8. Remove the (1) 10mm bolt on the right side of the airbox



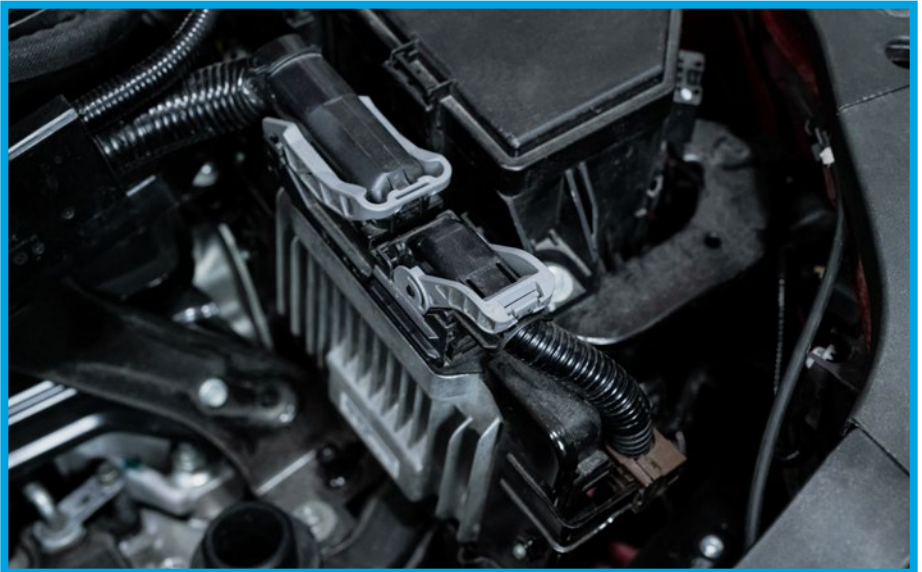
9. Remove the airbox by gently wiggling it free from the factory mounting post. It will expose the resonator under the factory airbox.



10. To fit the PRL High Volume Intake you will have to remove the factory resonator. This is under the ECU and the fuse box.



11. Before removing the resonator simply push back the (2) grey clips that lock the ECU into place. This will disconnect the ECU connections.



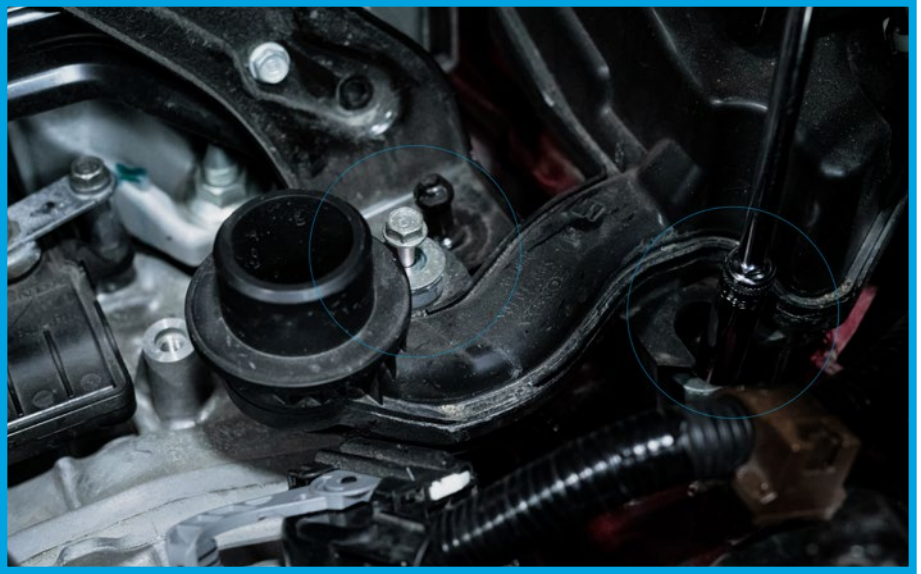
12. Remove the (1) factory 10mm bolt that is located behind the ECU, towards the battery. You will have to remove the lower bolt as well before removing.



13. Remove the (1) factory 10mm bolt that is located in between the ECU and fuse box. This will allow the ECU to be lifted up out of the way.



14. Remove the (2) factory 10mm bolts that hold the front of the resonator into place. These bolts and the bracket itself will not be re-used.



15. Free the back of the resonator by using a flat head screwdriver. Unseat the resonator off of the rubber grommet. Push inwards towards the engine.



16. Wiggle the resonator free from under the fuse box and remove from the vehicle. Set aside with the hardware and the rest of your factory components.



17. Re-bolt the ECU into place using the (2) factory 10mm bolts, and re-attach the harness. Push the grey clips towards the front of the car to lock into place.



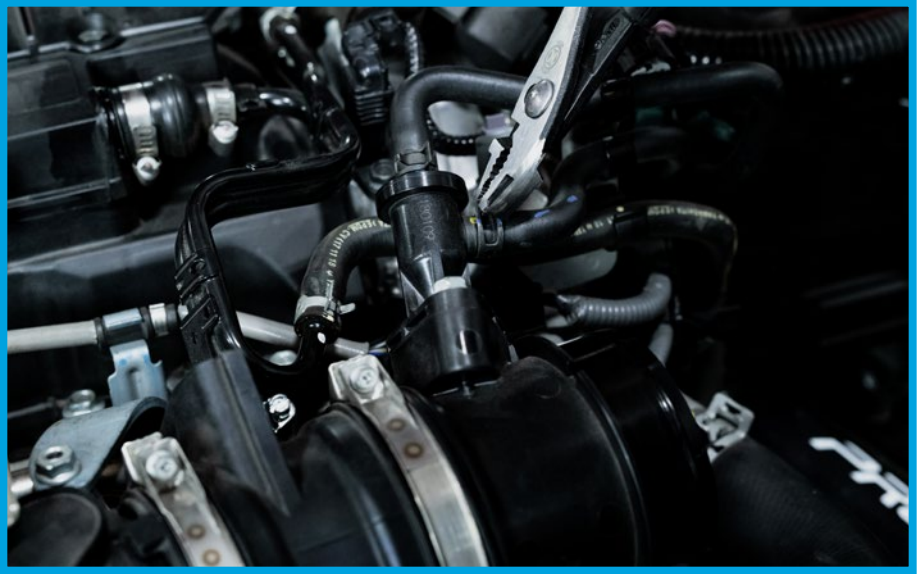
18. Loosen the (2) factory clamps on the factory intake pipe that connects to the factory inlet pipe. These clamps will not be re-used.



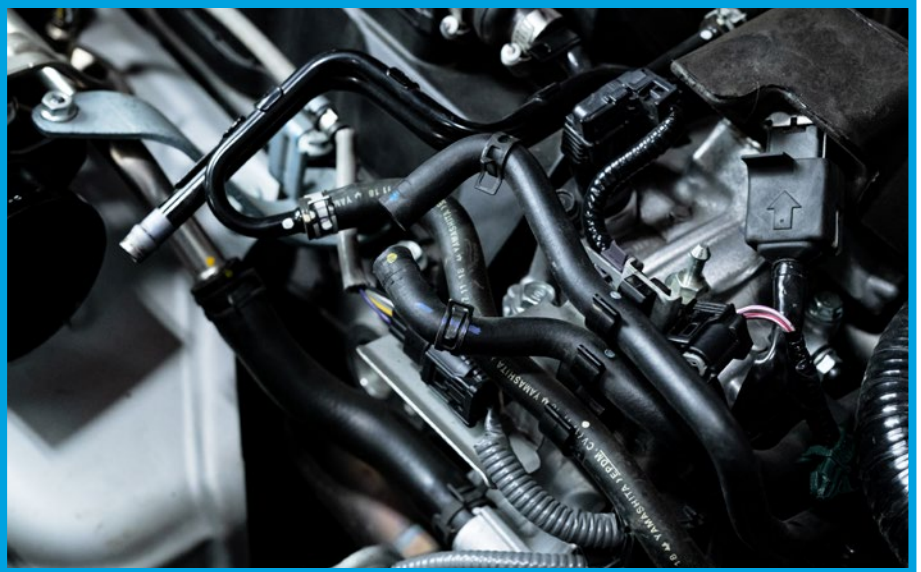
19. Loosen the (1) factory clamp that holds the vacuum lines to the factory intake pipe.



20. Using a pair of pliers, remove the tension clamps holding the EVAP lines to the factory EVAP assembly.



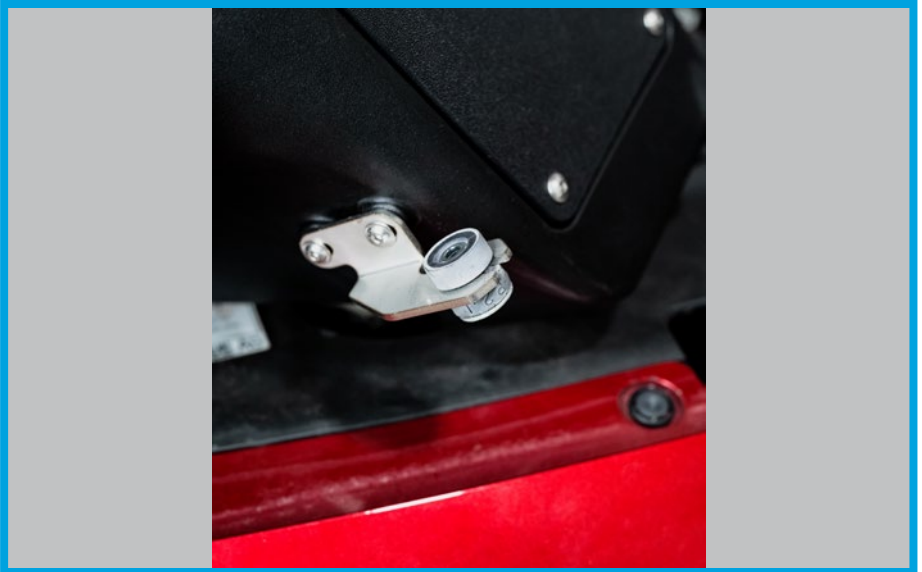
21. Remove the factory intake pipe from the inlet pipe and set aside. You will utilize all provided components to replace these connections.



22. Attach the PRL MAF to the airbox with the provided M5x12mm screws, and seat the PRL cone filter onto the inner MAF ring. Tighten and place the lid on.



23. Attach the provided mounting bracket and place the factory rubber grommet into the mounting bracket. Place the provided rubber grommet in the bottom.



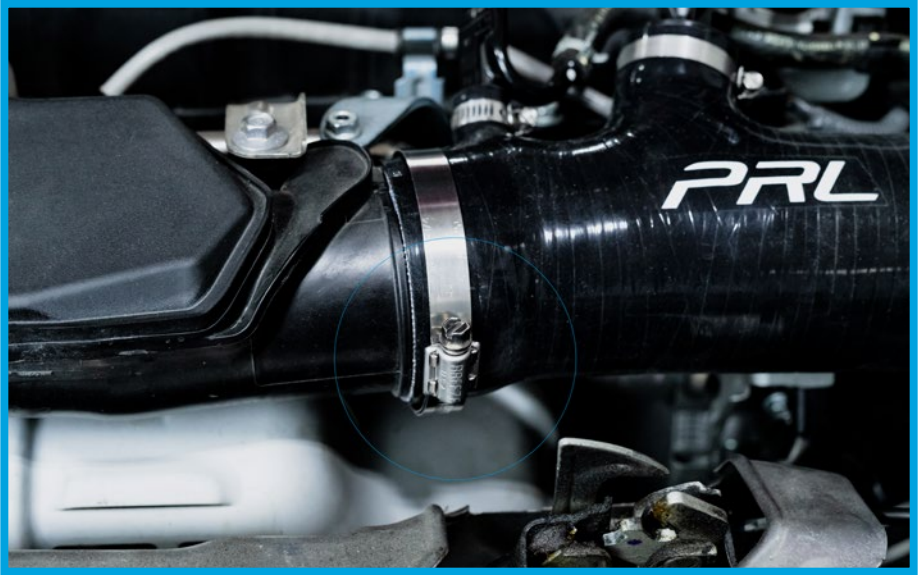
24. Align and then press the provided rubber seal along the rim of the duct of the airbox. This ensures a perfect seal for the airflow into the intake.



25. Put the provided rubber grommet into the bottom of the airbox. Seat the airbox onto the factory mounting post. Tighten the (1) factory 10mm bolt into the attached mounting bracket and factory grommet on the right side of the box.



26. Place the provided (2) worm gear clamps on each end of the PRL Intake Silicone and attach to the factory inlet and the PRL MAF housing.



27. Place the MAF sensor into the PRL MAF housing and tighten it into place. Be careful to not over-tighten and damage the sensor.



28. Insert the PRL EVAP assembly into the silicone. Using pliers, put the tension clamps into place. Using a flat head, tighten down all (4) clamps on the silicone.



29. Push the (2) provided plastic rivets into place to affix the air duct, reconnect the MAF sensor harness and ensure all connections are tight and secure.



Road Testing Your PRL High Volume Intake

1. Start the vehicle with the transmission in neutral and the emergency brake engaged. Assess to make sure of any possible issue(s) and then make any subsequent adjustments as they are needed.
2. Test drive the vehicle to ensure everything is in working order.
3. If after the road testing, everything is good to go, enjoy your PRL High Volume Intake! Thank you for being a part of the #PRLARMY.

If you have any questions/concerns please reach out to us at:
support@PRLMotorsports.com

Please provide a full description of your issue, ideally with any pertinent images or video clips that can help our team address the issue.

Please note: All support tickets are addressed during business hours and in order of received.

As stated at the beginning of this guide, the PRL High Volume Intake has been specifically designed to be 100% compatible with the factory ECU calibration. No tuning is required to benefit from the advertised gains and performance.

Required Maintenance

PRL Motorsports thoroughly recommends visually inspecting the air filter screen inside the HVI at every oil change. It is required to clean the air filter element whenever the screen is no longer visible or at a 30,000 mile interval. When used in a higher dust/arid climate or varied terrain environments, the air filter will require cleaning more often. To clean and re-oil, our #2801 Filter Cleaning & Recharge kits can be purchased direct on our website, or via an authorized PRL Motorsports dealer.

Filter Recharging Guide:

- 1. Pre-Cleaning:** Tap the filter or use canned air/compressor to remove any excess debris from the filter. Be careful to not damage the filter.
- 2. Apply Cleaner:** Spray the filter with the special cleaning solution provided in the kit and allow the solution to soak in for at least 15 minutes.
- 3. Rinsing:** Rinse the filter with warm water, clean side to dirty side to flush the dirt and debris outwards from the filter.
- 4. Drying:** Allow the filter to dry naturally. Try to avoid heat to prohibit any shrinkage that could occur in the cotton present in the filter.
- 5. Oil Application:** Re-oil the filter using the filter oil that is supplied in the kit. It is recommended to use a single spray per 2" of filter media. Do not over oil.



1400 RANDALL COURT - UNIT 104
EXPORT, PENNSYLVANIA 15632

www.PRLMotorsports.com

Follow Us!
PRLMotorsports

