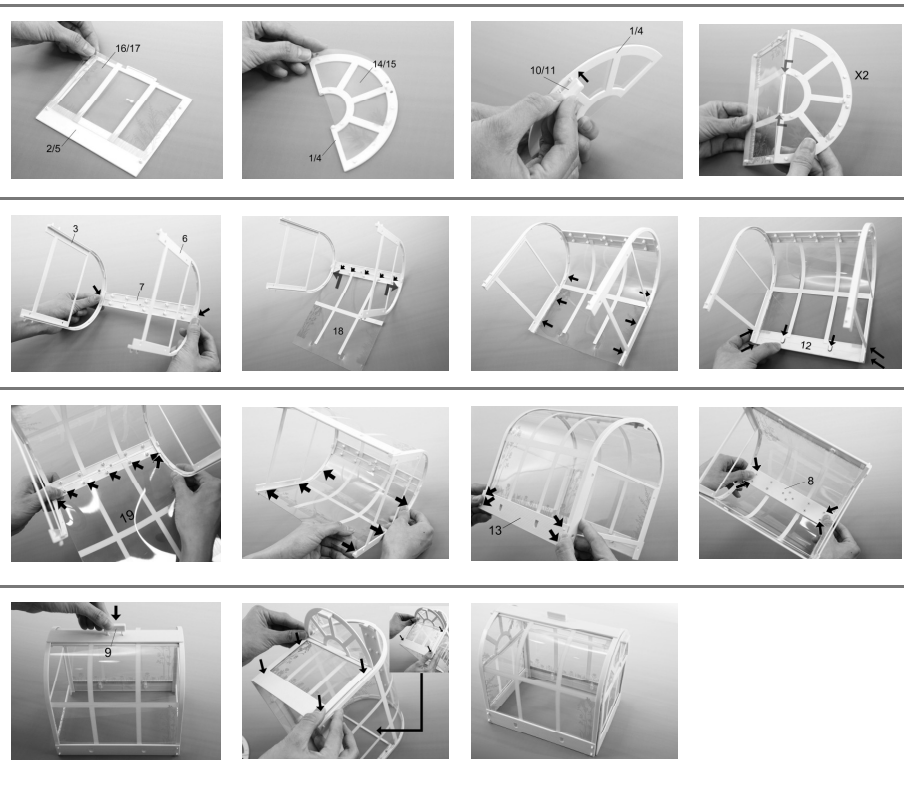
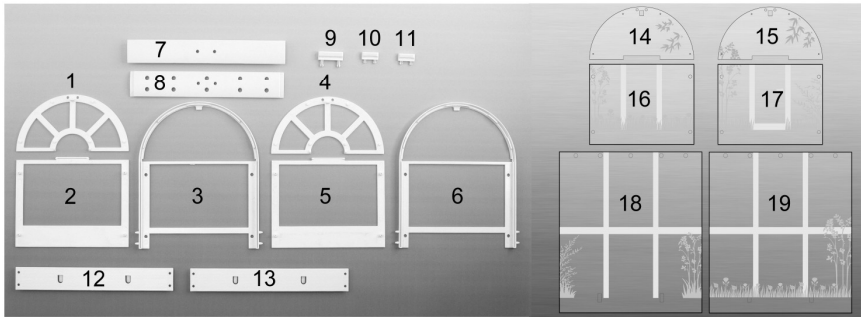


Item no. 1832 D-I-Y Greenhouse

Instruction Sheet

1. To set up the greenhouse, follow the below illustrations.



2. You will need soil to plant the seeds. Therefore find a handful of soil in your backyard, and place into each recess to third-quarter.



3. Using water to fill up the plastic pipette, drip water in the soil. One full plastic pipette of water can be enough to hose two recesses.



4. You will also need four different types of seeds. Ask an adult to buy some from local shops. Carrot, pumpkin, tomato and cucumber seeds are recommended.

5. Take about 4 seeds from each plant and tuck carefully into the soil. For your own identification on the different plants, stick the appropriate plant name on the side of the recess.



6. To start your experiment and compare the growing process, cover one plastic tray with the greenhouse you have constructed and the other plastic tray in the open air, preferably where it can be exposed to sunlight. Remember to water your plants with the plastic pipette everyday and be careful not to saturate them. The soil should be maintained at a damp level at all times, but not too wet.



7. Record the development of each plant by filling in the information chart provided.

8. In two weeks time, you should be able to see the shoot, sprout, and root of each plant to a height of 5-10 cm (depending on the type). You can then move the plants to a bigger pot filled with soil.