

Schlüter®-KERDI-DRAIN

Drainage

floor drains for bonded waterproofing assemblies

8.2

Product data sheet

Application and function

Schlüter®-KERDI-DRAIN is a floor drain system for the easy and reliable connection of drainage systems to bonded waterproofing assemblies. As specified in the information sheet of the German Construction Association (ZDB), these are a generally recognised technical principle.

The Schlüter®-KERDI collar is attached to the large, trapezoid perforated and fleece coated adhesive flange of the bonding flange insert as a sealing connection to the bonded waterproofing assembly.

Schlüter®-KERDI-DRAIN products have a modular structure and can be individually assembled to match every requirement. A variety of grate designs can be combined with different vertical or horizontal drain bodies with or without odour traps.

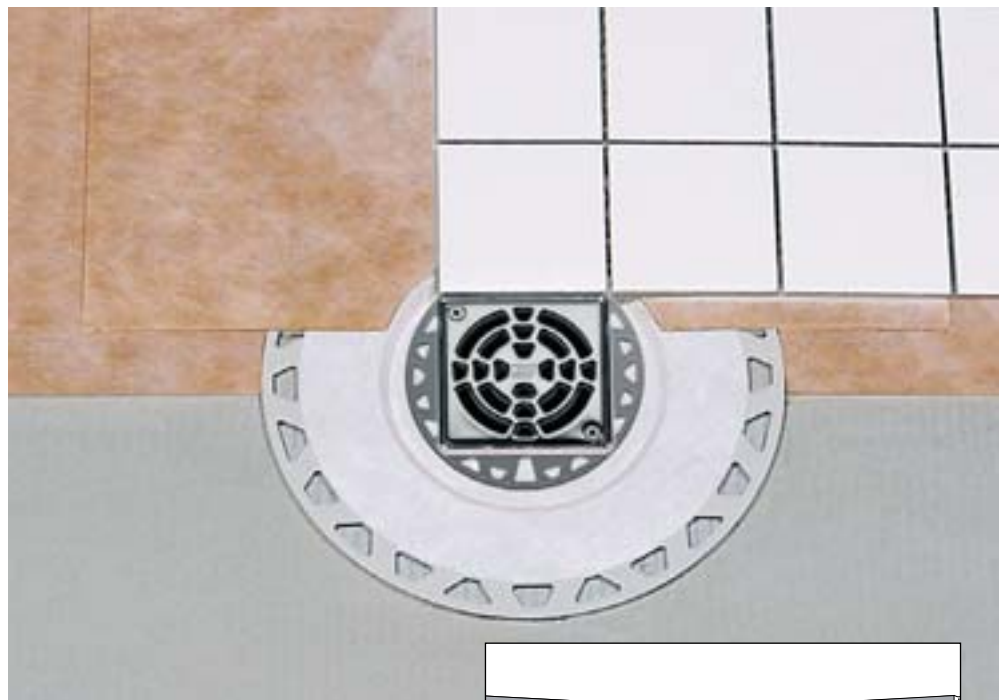
Schlüter®-KERDI-DRAIN-BASE is an especially low floor drain that is suitable for the installation of conventional floor level shower designs or for combination with Schlüter®-KERDI-SHOWER floor elements.

Material

The drain bodies are made of high-impact polypropylene (PP).

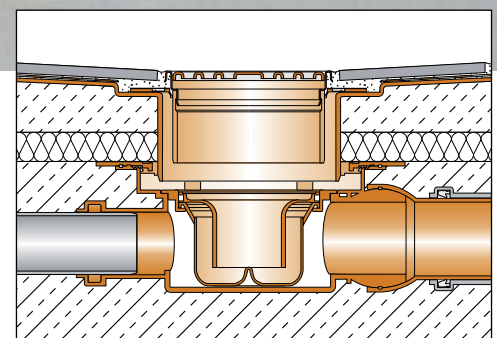
The bonding flange insert consists of acrylonitrile butadiene styrene (ABS) and features an adhesive flange with a fleece coated surface.

The Schlüter®-KERDI collar is a crack-bridging waterproofing membrane of soft polyethylene (PE) with a special fleece fabric



laminated on both sides for effective anchoring in the tile adhesive.

The stainless steel grate is made of V2A (material no. 1.4301), but can also be supplied in stainless steel V4A (material no. 1.4404).

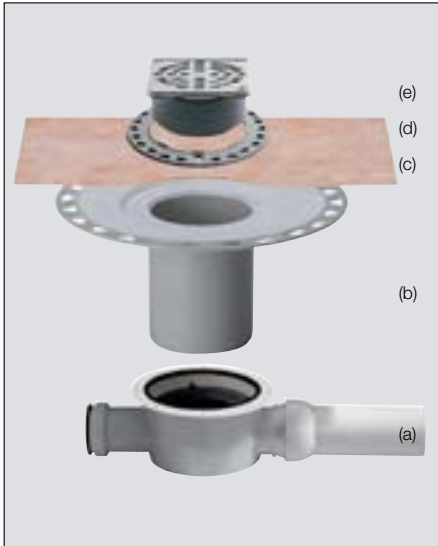


Material properties and areas of application:

The drain bodies, bonding flange inserts, and covers are categorised as Class K3 in accordance with DIN EN 1253, "Gullies for buildings." This class refers to surfaces without vehicle traffic, such as wet rooms in apartments, nursing homes, hotels, schools, public bathroom and shower facilities as well as terraces, galleries, and balconies.



Schlüter®-KERDI-DRAIN for interior applications



a Drain body
b Bonding flange
c Schlüter®-KERDI collar
d Height adjustment ring
e Stainless steel grate with frame

Drains installed in areas exposed to freezing temperatures should not include an odour trap. If an odour trap is needed, it must be installed in a different, frost-proof location, for example inside a building.

All horizontal drain bodies, with the exception of Schlüter®-KERDI-DRAIN-BASE, have an inlet and an outlet. The inlet is shipped with a cap. To guarantee the regular filling of the odour trap, the inlet may be connected, e.g. to a sink.

In special cases, the suitability of the selected floor drainage system must be verified based on the anticipated chemical, mechanical, and/or other stresses.

adhered with the sealing adhesive Schlüter®-KERDI-COLL.

6. Suitable covering materials include coatings or ceramic tiles. Adjust the height of the grate (e) by setting the height adjustment ring (d) and placing adhesive underneath it so that it is flush with the covering (Fig. 8). Since the grate and frame assembly (e) has a smaller diameter than the bonding flange insert (b), the grate can be adjusted to match the joint pattern of the tile covering.

Note:
Schlüter®-KERDI-DRAIN is also suitable for installation in wooden substrates. Further details are available upon request.

Installation of Schlüter®-KERDI-DRAIN with drain body

1. Install the drain body Schlüter®-KERDI-DRAIN (a) in the support structure and connect it to the drainage pipe.
2. If required, sound or heat insulation may be installed next (Fig. 2).
3. Remove the protective cap (Fig. 3), cut the bonding flange insert Schlüter®-KERDI-DRAIN (b) to size in accordance with the height of the floor assembly (Fig. 4) and insert it firmly into the drain body (Fig. 5/6) (using lubricant if necessary).

Note on Fig.6: To allow for sufficient height movement of coverings with insulation, shorten the bonding flange insert in such a way that it is not in full contact with the drain body.

4. Now install the screed in such a way that the trapezoid perforated flange of the Schlüter®-KERDI-DRAIN bonding flange insert (b) is flush with the upper edge of the screed.

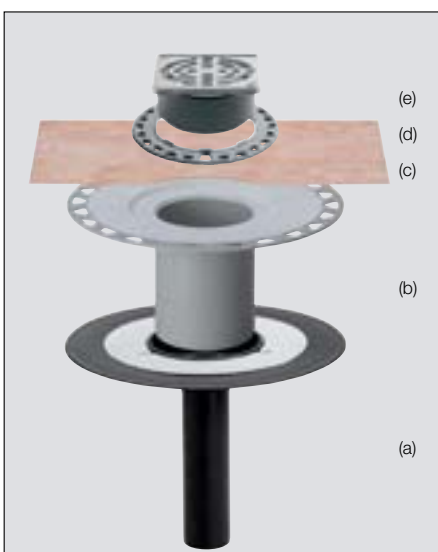
5. Attach a Schlüter®-KERDI collar (c) with the sealing adhesive Schlüter®-KERDI-COLL to create a waterproof transition to the screed (Fig. 7). In a next step, install the bonded waterproofing assembly of Schlüter®-KERDI or a trowel applied sealing compound with a sufficient overlap over the collar. If Schlüter®-DITRA 25 is used for waterproofing, bring the mat all the way to the perforated edge of the bonding flange only. Now install the Schlüter®-KERDI collar by embedding it with a full overlap on the Schlüter®-DITRA 25 mat. The Schlüter®-KERDI collar is best

Notes

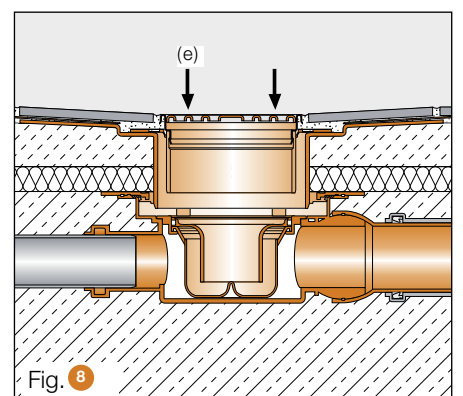
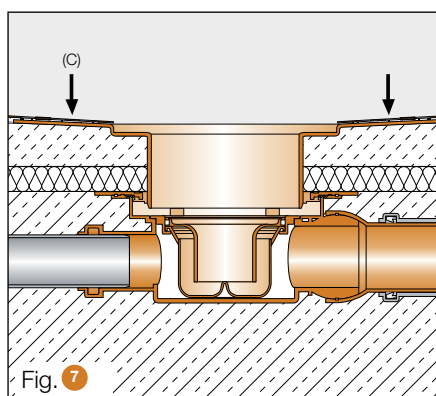
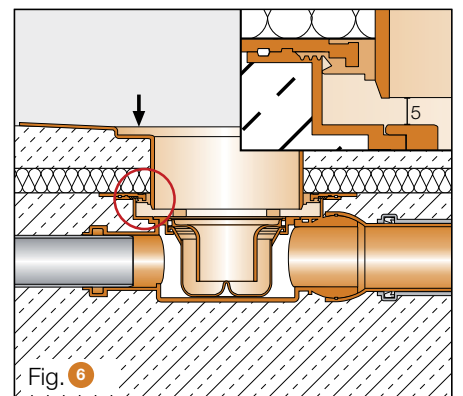
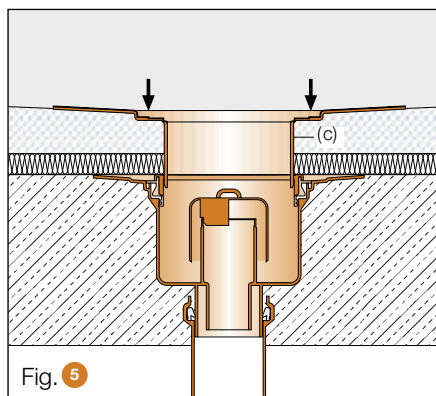
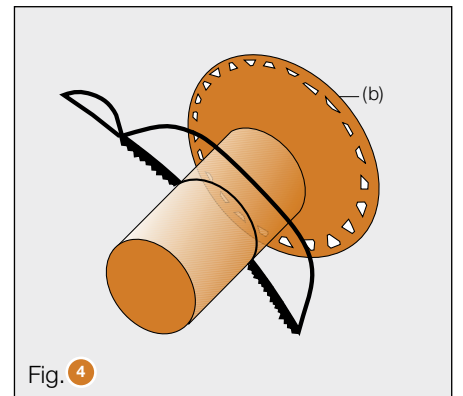
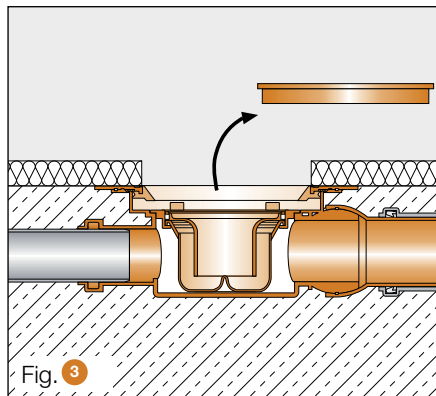
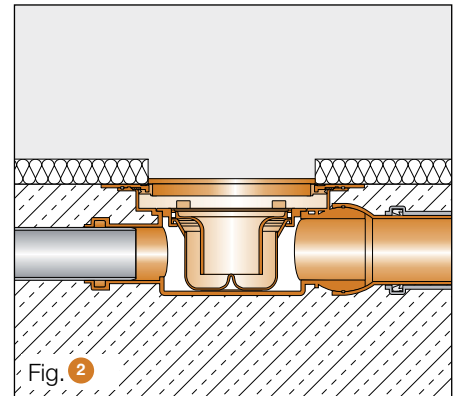
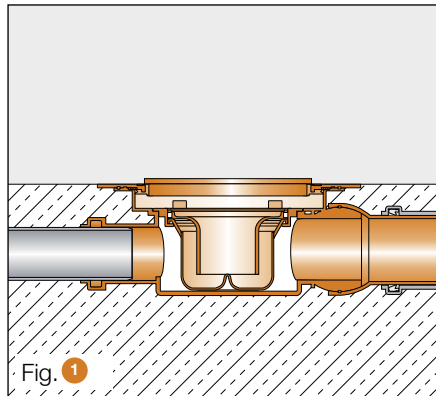
Schlüter®-KERDI-DRAIN requires no special maintenance or care. Stainless steel surfaces exposed to the environment or aggressive substances should be cleaned periodically using a mild household cleaner. Regular cleaning maintains the neat appearance of stainless steel and reduces the risk of corrosion. All cleaning agents must be free of hydrochloric and hydrofluoric acid.

The stainless steel grate and the odour trap may be removed for cleaning the drain body and the pipes.

Schlüter®-KERDI-DRAIN for exterior applications



a Vertical drain without odour trap
b Bonding flange
c Schlüter®-KERDI collar
d Height adjustment ring
e Stainless steel grate with frame





Installation of Schlüter®-KERDI-DRAIN-BASE

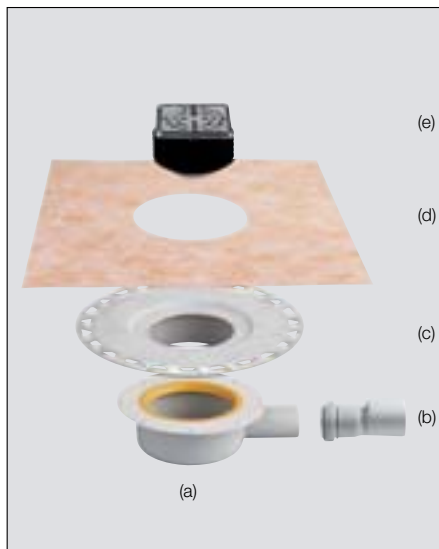
1. Place the drain body Schlüter®-KERDI-DRAIN-BASE (a) on the support structure (using suitable impact insulation if applicable) and connect it to the drainage pipe. If necessary, use the supplied adapter for this purpose.
2. The screed must be installed in such a way that the trapezoid perforated flange of the Schlüter®-KERDI-DRAIN bonding flange insert (c) is flush with the upper edge of the screed (see Fig. 1).
3. Attach a Schlüter®-KERDI collar (d) with the sealing adhesive Schlüter®-KERDI-COLL to create a waterproof transition to the screed area. In a next step, install the bonded waterproofing assembly of Schlüter®-KERDI or a trowel applied sealing compound with a sufficient overlap over the collar. If Schlüter®-DITRA 25 is used for waterproofing, bring the mat all the way to the perforated edge of the insert only. Now install the Schlüter®-KERDI collar by embedding it with a full overlap on the Schlüter®-DITRA 25 mat. The Schlüter®-KERDI collar is best adhered with the sealing adhesive Schlüter®-KERDI-COLL. Follow the corresponding installation instructions if Schlüter®-KERDI-DRAIN-BASE is installed together with Schlüter®-KERDI-SHOWER (Fig. 2).

Notes

Schlüter®-KERDI-DRAIN-BASE requires no special maintenance or care. Stainless steel surfaces exposed to the environment or aggressive substances should be cleaned periodically using a mild household cleaner. Regular cleaning maintains the neat appearance of stainless steel and reduces the risk of corrosion. All cleaning agents must be free of hydrochloric and hydrofluoric acid.

The stainless steel grate and the odour trap may be removed for cleaning the drain body and the pipes.

Schlüter®-KERDI-DRAIN-BASE



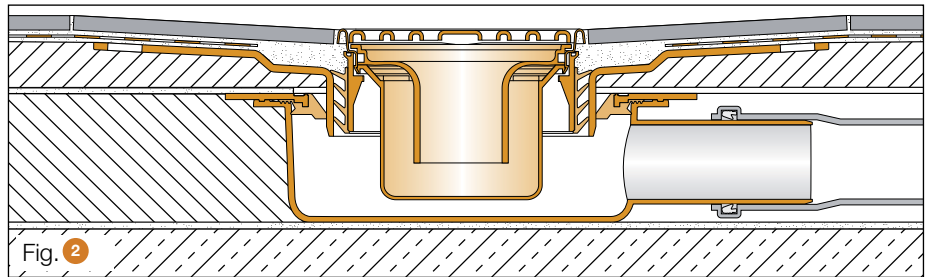
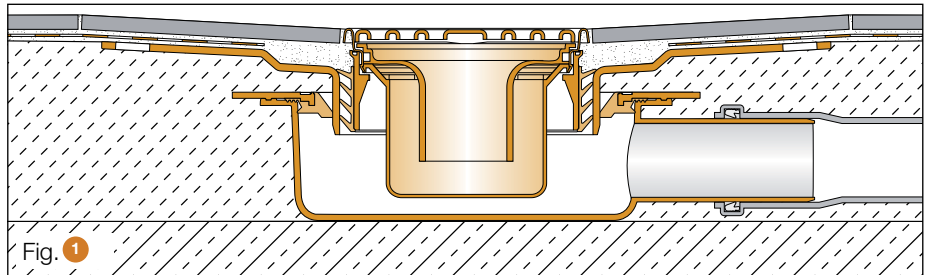
Sample assembly

a Drain body
b Adapter
c Bonding flange
d Schlüter®-KERDI collar
a Stainless steel grate with frame and integrated odour trap

4. Suitable covering materials include coatings or ceramic tiles (covering thicknesses 3-15 mm). Without using lubricants, adjust the height of the grate by pushing the stainless steel grate (Fig. 3) into place and placing enough mortar under it (Fig. 4) to align the grate flush with the covering.
5. Prior to using the drain, remove the stainless steel grate and push down on the odour trap to check its positioning (Fig. 5; if necessary, apply some lubricant to the O-ring).

Note:

Schlüter®-KERDI-DRAIN-BASE is also suitable for installation in wooden substrates. Further details are available upon request.





Installation of the Schlüter®-KERDI-DRAIN combined floor drain

Schlüter®-KERDI-DRAIN Combined floor drain



Sample assembly

a Combined floor drain
b Schlüter®-KERDI collar
c Two part odour trap
d Height adjustment ring
e Stainless steel grate with frame

1. After the installation of impact or heat insulation, if applicable, position the combined floor drain (a) in accordance with the height of the floor assembly and connect it to the drainage system.
2. Now install the screed in such a way that the trapezoid perforated flange of the Schlüter®-KERDI-DRAIN insert (Fig. 1) is flush with the upper edge of the screed.
3. Attach a Schlüter®-KERDI collar (b) with the sealing adhesive Schlüter®-KERDI-COLL to create a waterproof transition to the screed (Fig. 2). Next install the bonded waterproofing assembly made of Schlüter®-KERDI or a trowel applied sealing compound with a sufficient overlap over the collar. If Schlüter®-DITRA 25 is used for waterproofing, bring the mat all the way to the perforated edge of the drain only. Now install the Schlüter®-KERDI collar by embedding it with a full overlap on the Schlüter®-DITRA 25 mat. The Schlüter®-KERDI collar is best adhered with the sealing adhesive Schlüter®-KERDI-COLL.
4. Suitable covering materials include coatings or ceramic tiles (Fig. 3).

Note:

Schlüter®-KERDI-DRAIN is also suitable for installation in wooden substrates. Further details are available upon request.

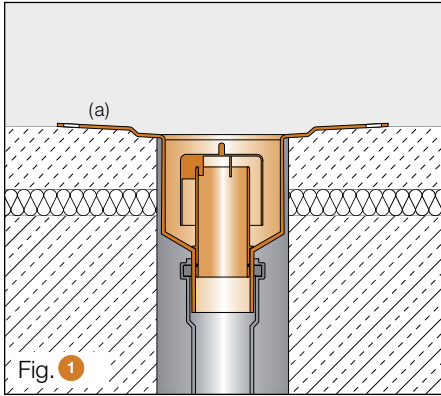
Notes

Schlüter®-KERDI-DRAIN requires no special maintenance or care. Stainless steel surfaces exposed to the environment or aggressive substances should be cleaned periodically using a mild household cleaner. Regular cleaning maintains the neat appearance of stainless steel and reduces the risk of corrosion. All cleaning agents must be free of hydrochloric and hydrofluoric acid.

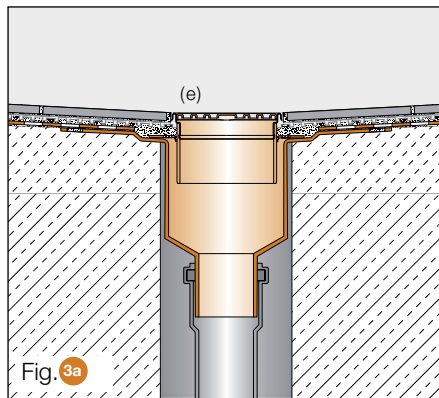
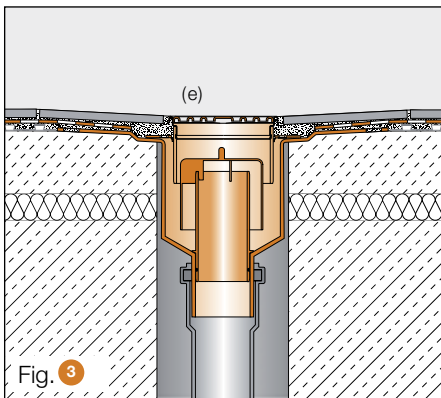
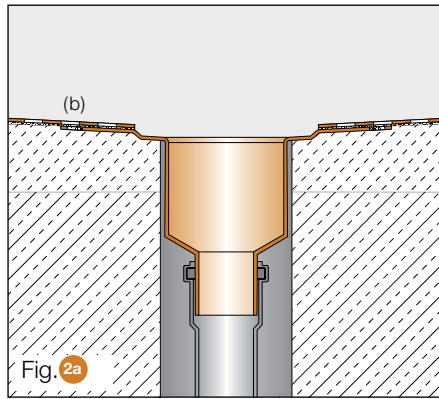
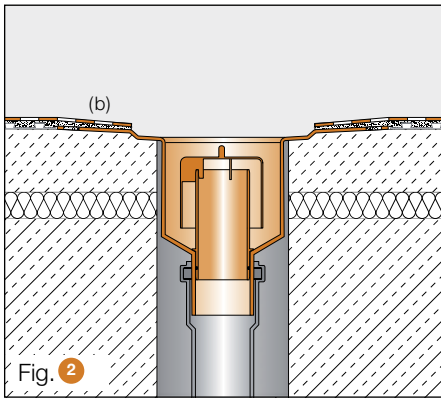
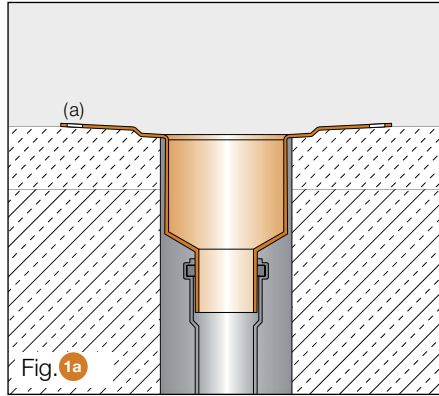
The stainless steel grate and the odour trap may be removed for cleaning the drain body and the pipes.



Interior areas



Exterior areas





Installation of the Schlüter®-KERDI-DRAIN covering support

1. The installation of the covering can begin as soon as the Schlüter®-KERDI collar has been adhered with the sealing adhesive Schlüter®-KERDI-COLL. Suitable covering materials include ceramic tiles or natural stone.

2. **Covering support assembly and height adjustment ring.** Apply cementitious tile adhesive to the floor drain (Fig. 1a). Place the stainless steel frame with the drill holes into the recessed openings of the height adjustment ring (Fig. 2a) and embed it in the tile adhesive (Fig. 3a).

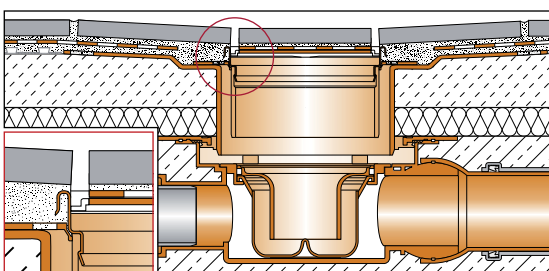
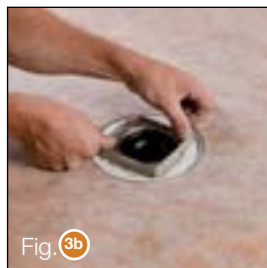
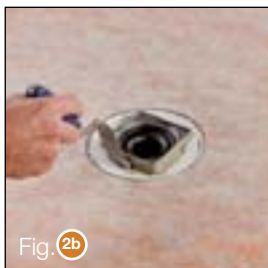
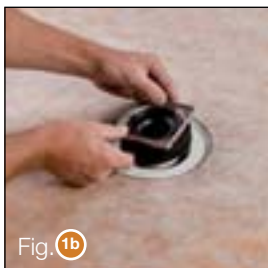
Covering support assembly and integrated odour trap. Place the stainless steel grate with frame into the bonding flange insert (Fig. 1b), fill tile adhesive under it (Fig. 2b), and then push to the maximum depth (Fig. 3b).

3. Using the spacer included, place this within the frame so that the adjacent tiles are correctly spaced to form the drainage openings. Note the tile should sit above the frame as indicated (Fig. 4). Any excess adhesive must be wiped off after removing the spacer.

4. Place cementitious tile adhesive on the covering support (Fig. 5) and adhere it to the matching covering cutout of 8.2 x 8.2 cm (Fig. 6) to create a peripheral water drainage gap of at least 5 mm (Fig. 7).

Note:

For neat appearance, it is recommended to use a wet cutting machine for custom cuts and to bevel the edges of covering materials. The installation instructions included with the drain body also need to be observed.





Two level drainage with KD 10 MSB

Prior to installing the collar Schlüter®-KERDI-DRAIN-MSB, remove the anti-flowback seal from the installed floor drain Schlüter®-KERDI-DRAIN. This is done by loosening the three screws. Now place the O-ring (a) into the recess. You now can choose two different methods for connecting the waterproofing membrane:

1. Place the supplied EPDM connection collar (b) on the flange of the floor drain.

Note:

There is no option to directly adhere the collar with a bitumen sheet. A suitable cold adhesive should be used to adhere a bitumen sheet.

Or:

2. Install the waterproofing membrane and cut out an opening that corresponds to the interior diameter of the connection collar.

Schlüter®-KERDI-DRAIN-MSB KD 10 MSB



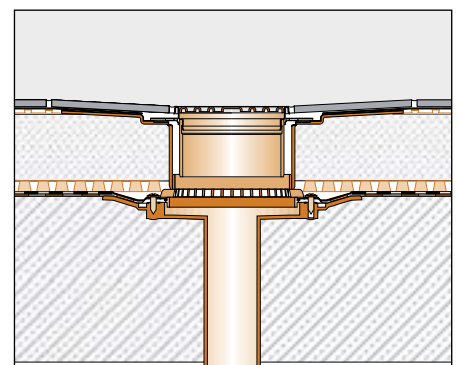
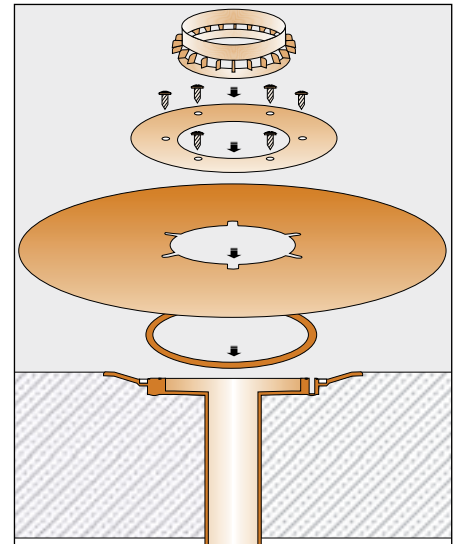
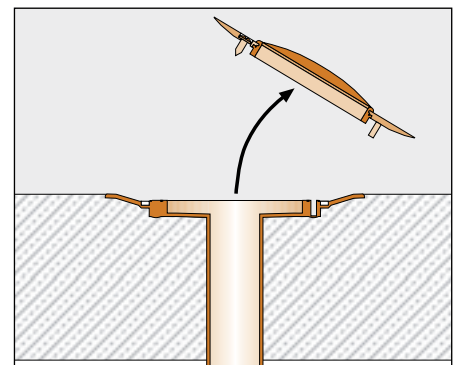
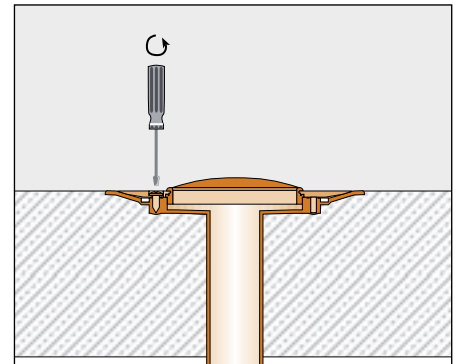
- a O-ring
- b Connection collar made of EPDM
- c Stainless steel flange ring
- d Inlet element

Now place the stainless steel flange ring (c) (top side is marked) on the collar with the recess openings matching the plastic pins of the flange. The stainless steel flange ring is then attached through the collar with the supplied screws. Firmly clamp the perforated inlet element (d) to the flange ring. Cut the Schlüter®-KERDI-DRAIN insert to size in accordance with the height of the assembly and slide it over the perforated inlet element.

Note:

In accordance with the applicable construction guidelines for flat roofs with continuous peripheral parapets, a safety spout must be installed for drainage.

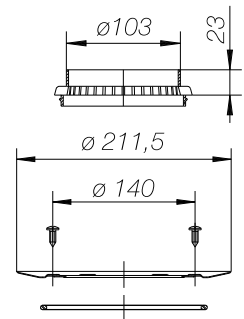
Our stainless steel spout Schlüter®-KERDI-DRAIN-SP-E is particularly suitable for this purpose.



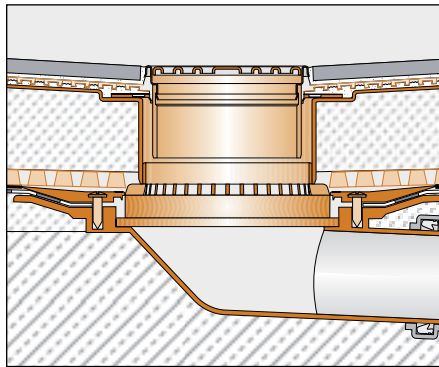


Collar set for creating two level drainage of surface water and seepage in conjunction with drain bodies.

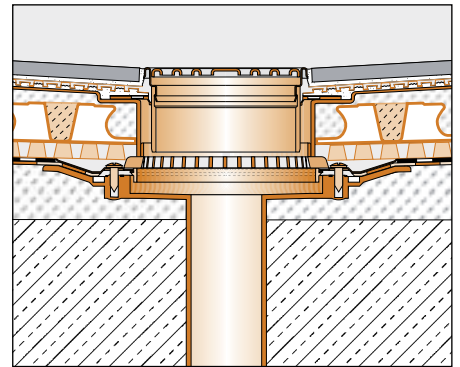
Supplied unit:
 Connection collar \varnothing 420 mm
 Stainless steel clamping ring
 Perforated inlet element
 Art.-No.: KD 10 MSB



Horizontal sample assembly



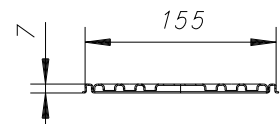
Vertical sample assembly



Renovation insert accessory

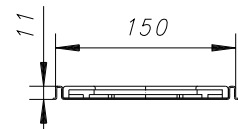
Renovation frame made of stainless steel with grate 15 x 15 cm for retrofit installation

Supplied unit: Frame with grate
 Art.-No.: KD 15 R



Two part stainless steel renovation frame 15 x 15 cm and two part plastic grate for retrofit installation over an existing downspout \varnothing 70 mm

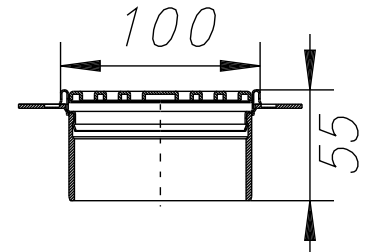
Supplied unit: Frame with grate
 Art.-No.: KD 15 RL



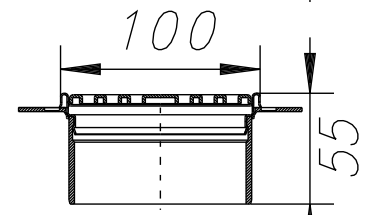


Grate and frame set with height adjustment ring

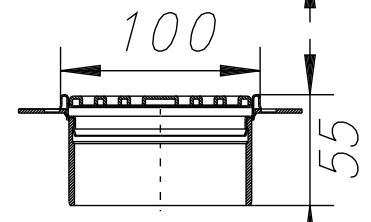
Stainless steel grate with frame and height adjustment ring
Screw attached grate 10 x 10 cm, Design 1,
Laterally adjustable in all directions
For coverings with thicknesses from 3 to 30 mm
Art.-No.: KD R10 ED1 S



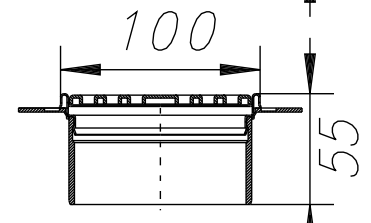
Stainless steel grate with frame and height adjustment ring
Screw attached grate 10 x 10 cm, Design 1, V4A
Laterally adjustable in all directions
For coverings with thicknesses from 3 to 30 mm
Art.-No.: KD R10 V4A D1 S



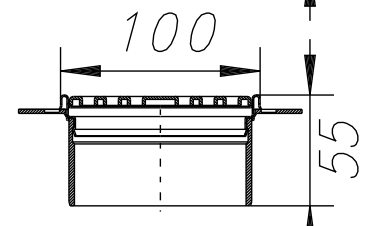
Stainless steel grate with frame and height adjustment ring
Grate 10 x 10 cm, Design 1,
Laterally adjustable in all directions
For coverings with thicknesses from 3 to 30 mm
Art.-No.: KD R10 ED1



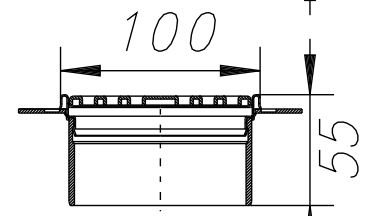
Stainless steel grate with frame and height adjustment ring
Screw attached grate 10 x 10 cm, Design 1, Oil-rubbed bronze stainless steel,
Laterally adjustable in all directions
For coverings with thicknesses from 3 to 30 mm
Art.-No.: KD R10 EOB D1 S



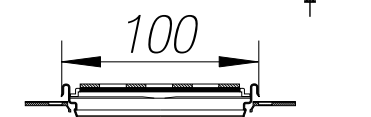
Stainless steel grate with frame and height adjustment ring
Grate 10 x 10 cm, Design 2,
Laterally adjustable in all directions
For coverings with thicknesses from 3 to 30 mm
Art.-No.: KD R10 ED2



Stainless steel grate with frame and height adjustment ring
Grate 10 x 10 cm, Design 3,
Laterally adjustable in all directions
For coverings with thicknesses from 3 to 30 mm
Art.-No.: KD R10 ED3

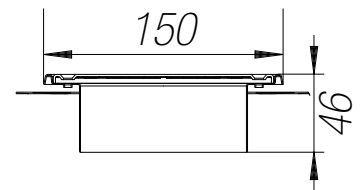


Covering tile support with frame and height adjustment ring
Covering 10 x 10 cm, Design 4,
Laterally adjustable in all directions
Suitable for all coverings,
regardless of thickness
Art.-No.: KD R10 ED4

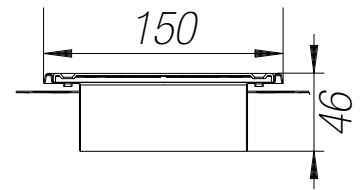




Stainless steel grate with frame and height adjustment ring
Grate 15 x 15 cm, Design 1,
Laterally adjustable in all directions
For coverings with thicknesses from 3 to 20 mm
Art.-No.: KD R15 ED1 S



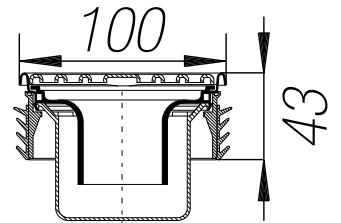
Stainless steel grate with frame and height adjustment ring
Grate \varnothing 15 cm, Design 1,
Laterally adjustable in all directions
For coverings with thicknesses from 3 to 20 mm
Art.-No.: KD R15 ED1 SR



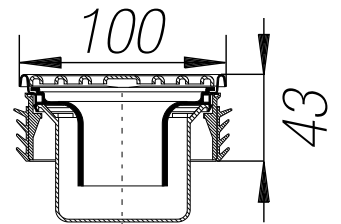


Grate and frame set with integrated odour trap

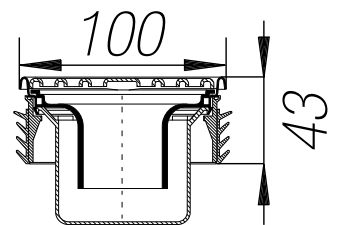
Stainless steel grate with frame and integrated odour trap
Screw attached grate 10 x 10 cm, Design 1,
Seal water level: 3 cm
For coverings with thicknesses from 3 to 15 mm
Art.-No.: KD R10 ED1 SGV



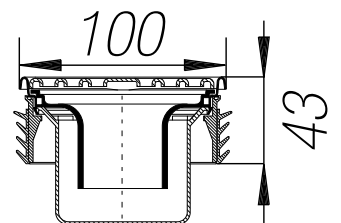
Stainless steel grate with frame and integrated odour trap
Screw attached grate 10 x 10 cm,
Design 1, V4A,
Seal water level: 3 cm
For coverings with thicknesses from 3 to 15 mm
Art.-No.: KD R10 V4A D1 SGV



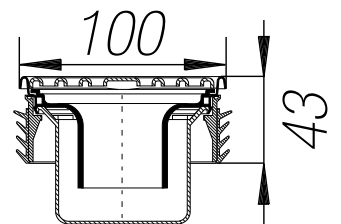
Stainless steel grate with frame and integrated odour trap
Grate 10 x 10 cm, Design 1,
Seal water level: 3 cm
For coverings with thicknesses from 3 to 15 mm
Art.-No.: KD R10 ED1 GV



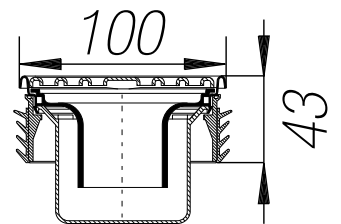
Stainless steel grate with frame and integrated odour trap
Screw attached grate 10 x 10 cm, Design 1,
Oil-rubbed bronze stainless steel,
Seal water level: 3 cm
For coverings with thicknesses from 3 to 15 mm
Art.-No.: KD R10 EOB D1 SGV



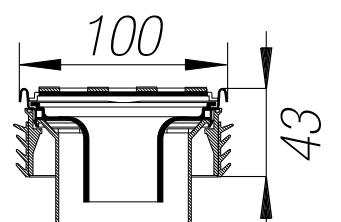
Stainless steel grate with frame and integrated odour trap
Grate 10 x 10 cm, Design 2,
Seal water level: 3 cm
For coverings with thicknesses from 3 to 15 mm
Art.-No.: KD R10 ED2 GV



Stainless steel grate with frame and integrated odour trap
Grate 10 x 10 cm, Design 3,
Seal water level: 3 cm
For coverings with thicknesses from 3 to 15 mm
Art.-No.: KD R10 ED3 GV



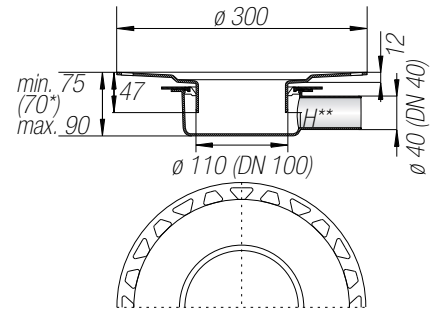
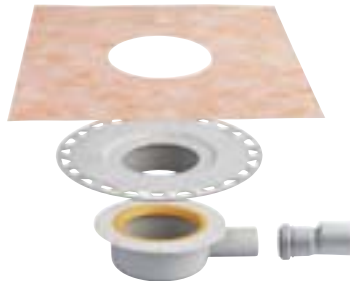
Covering tile support with frame and integrated odour trap
Covering 10 x 10 cm, Design 4,
Seal water level: 3 cm
Suitable for all coverings,
regardless of thickness
Art.-No.: KD R10 ED4 GV



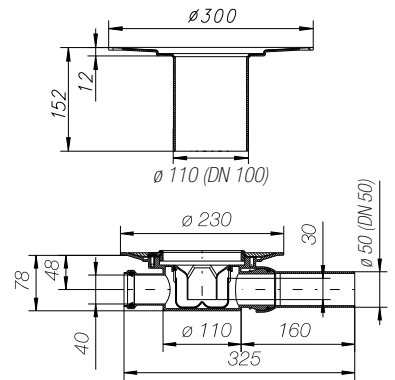


Schlüter®-KERDI-DRAIN horizontal drainage

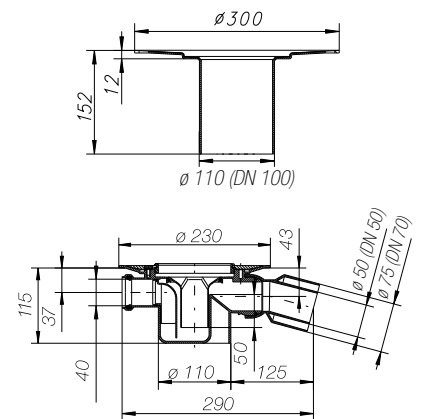
Floor drain set DN 40
 Without odour trap
 Drain DN 40 (40 mm) with rigid connection
 Drain capacity: 0.4 l/s (24 l/min)
 Seal water level: 3 cm
 Art.-No.: KD BH 40
 Supplied unit:
 - Drain body
 - Adapter
 - Bonding flange
 - Schlüter®-KERDI collar



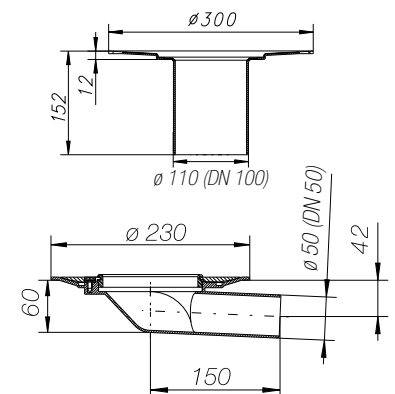
Floor drain set DN 50
 with odour trap
 Inlet DN 40 (40 mm)
 Drain DN 50 (50 mm) with pivot connection
 Drain capacity: 0.6 l/s (36 l/min)
 Seal water level: 3 cm
 Art.-No.: KD BH 50GV
 Supplied unit:
 - Drain body
 - Bonding flange
 - Schlüter®-KERDI collar

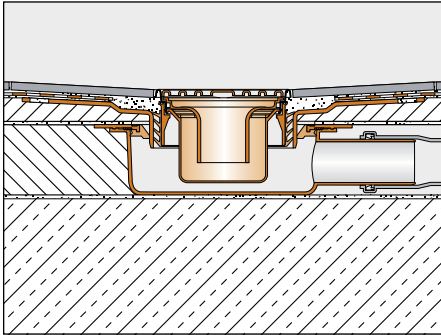


Floor drain set DN 50/70
 with odour trap
 Inlet DN 40 (40 mm), drain DN 50/70
 (50/75 mm) with pivot connection
 Drain capacity: 0.8 l/s (48 l/min)
 Seal water level: 5 cm
 Art.-No.: KD BH 5070 GV
 Supplied unit:
 - Drain body
 - Bonding flange
 - Schlüter®-KERDI collar



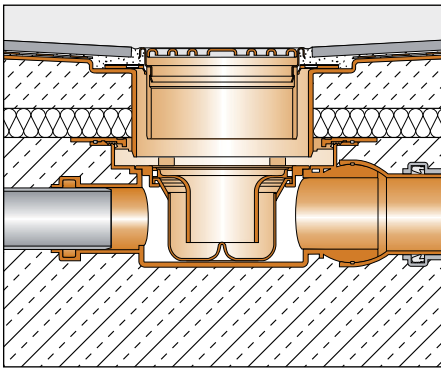
Floor drain set DN 50
 Without odour trap
 Drain DN 50 (50 mm) with rigid connection
 Drain capacity: Body, 5.79 l/s
 with frame/grate 1.4 l/s
 Art.-No.: KD BH 50
 Supplied unit:
 - Drain body
 - Bonding flange
 - Schlüter®-KERDI collar



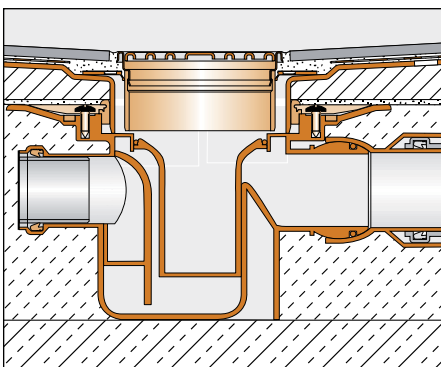


The installation height can be reduced by 5 mm to 70 mm by removing the rubber ring. To meet the requirements of DIN 1253 and to achieve a drain capacity of 0.4 l/s, a free cross-section (H**) of 32 mm must be ensured. The bonding flange insert and the frame must be cut to size accordingly if a covering support is used.

Application: Interior areas
Min. assembly height: 75 (70 mm)

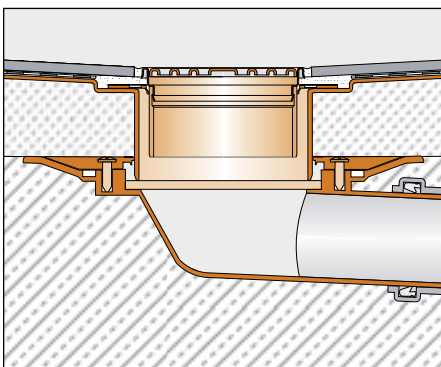


Application: Interior areas
Min. assembly height: 105 mm



Application: Interior areas
Min. assembly height: 140 mm

Complies with DIN EN 1253



Application: Exterior areas
Min. assembly height: 75 mm



Schlüter®-KERDI-DRAIN vertical drainage

Combined floor drain with odour trap

Drain DN 50 (50 mm)

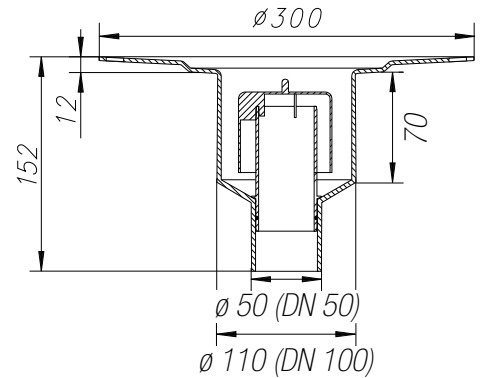
Drain capacity: 0.6 l/s (36 l/min)

Seal water level: 4 cm

Art.-No.: KD BV 50 GV

Supplied unit:

- Combined floor drain
- Schlüter®-KERDI collar
- Two part odour trap



Stainless steel grate with frame and integrated odour trap

Drain capacity: 0.8 l/s (48 l/min)

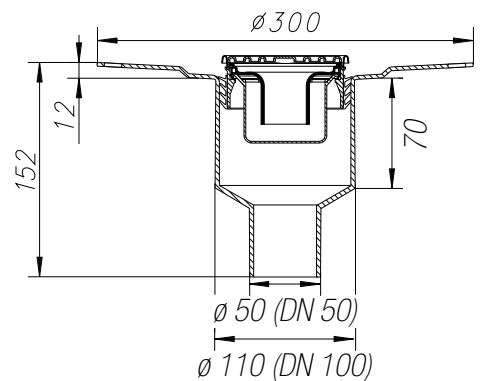
Seal water level: 3 cm

Art.-No.: KD R10 ED1 SGV

Combined floor drain without odour trap

Drain DN 50 (50 mm)

Art.-No.: KD BV 50



Floor drain set without odour trap

Drain DN 50 (50 mm)

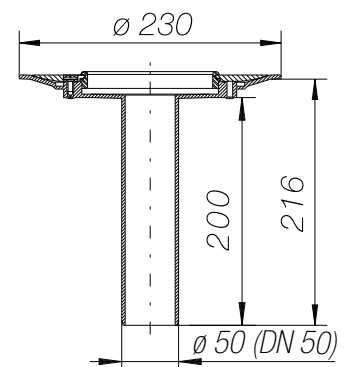
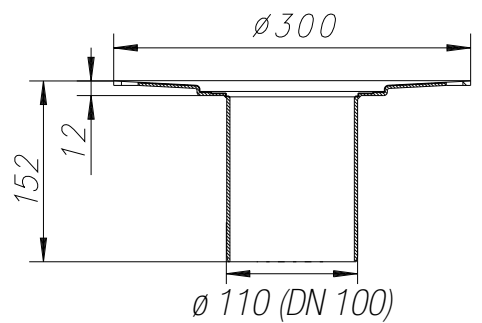
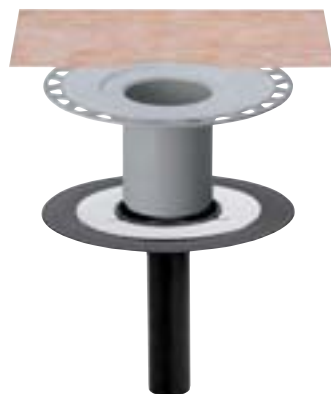
Drain capacity: Body, 5.79 l/s

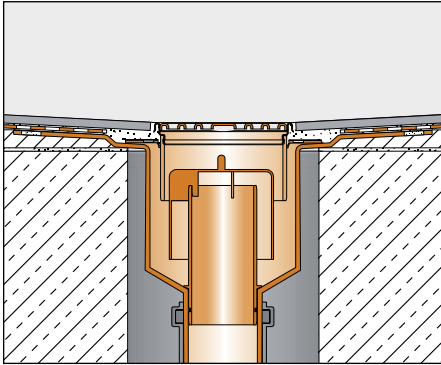
with frame/grate 1.4 l/s

Art.-No.: KD BV 50A

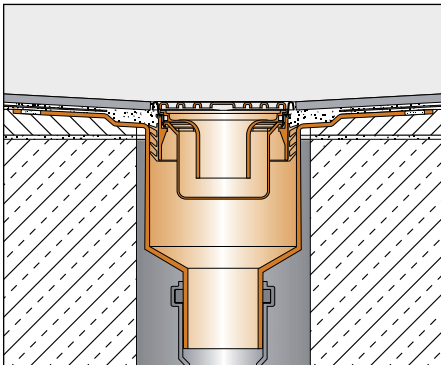
Supplied unit:

- Drain body
- Bonding flange insert
- Schlüter®-KERDI collar

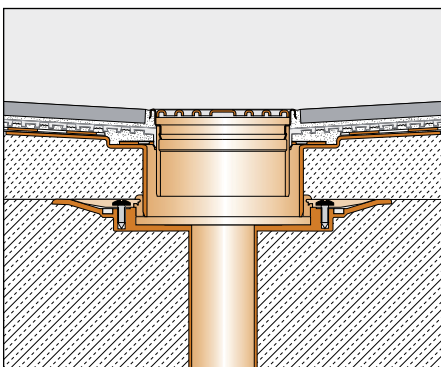




Application: Interior areas



Application: Interior areas

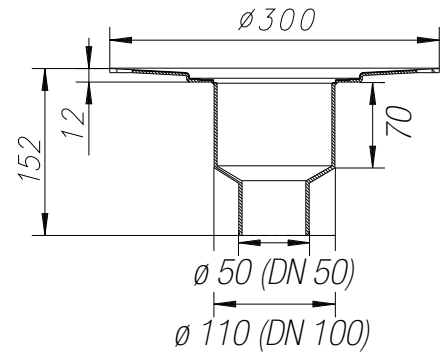


Application: Exterior areas

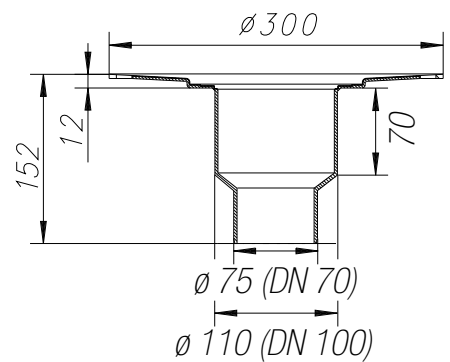
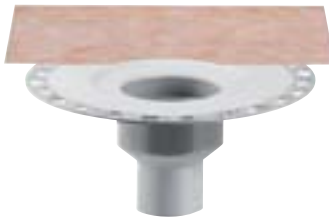


Schlüter®-KERDI-DRAIN vertical drainage

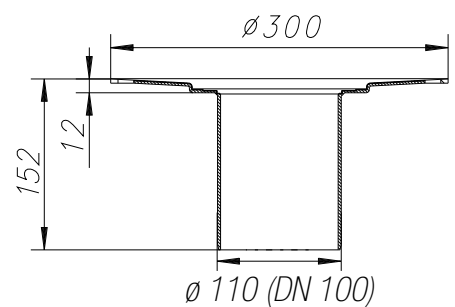
Combined floor drain without odour trap
 Drain DN 50 (50 mm)
 Drain capacity: With frame/grate 1.4 l/s
 Art.-No.: KD BV 50
 Supplied unit:
 - Bonding flange floor drain
 - Schlüter®-KERDI collar

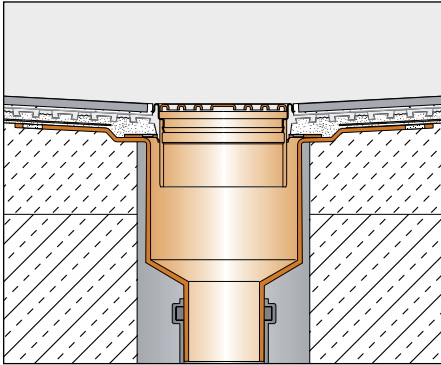


Combined floor drain without odour trap
 Drain DN 70 (75 mm)
 Drain capacity: With frame/grate 1.4 l/s
 Art.-No.: KD BV 70
 Supplied unit:
 - Bonding flange floor drain
 - Schlüter®-KERDI collar

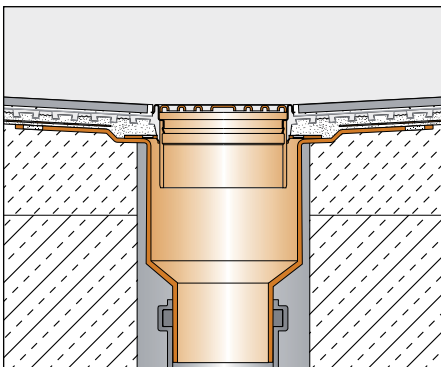


Combined floor drain without odour trap
 Drain DN 100 (110 mm)
 Drain capacity: With frame/grate 1.4 l/s
 Art.-No.: KD BV 100
 Supplied unit:
 - Bonding flange floor drain
 - Schlüter®-KERDI collar

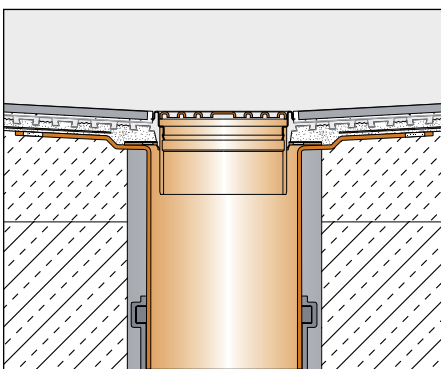




Application: Exterior areas



Application: Exterior areas



Application: Exterior areas

**Text template for tenders****Schlüter®-KERDI-DRAIN**

_____ units of

Schlüter®-KERDI-DRAIN is a stainless steel grate with frame and height adjustment ring, to be installed as part of the surface covering, matching the height of the assembly.

- Screw attached stainless steel grate 10 x 10 cm, Design 1,
- Screw attached stainless steel grate V4A 10 x 10 cm, Design 1,
- Stainless steel grate 10 x 10 cm, Design 1,
- Screw attached stainless steel grate, oil-rubbed bronze 10 x 10 cm, Design 1,
- Stainless steel grate 10 x 10 cm, Design 2,
- Stainless steel grate 10 x 10 cm, Design 3,
- Covering support 10 x 10 cm, Design 4,
- Screw attached stainless steel grate 15 x 15 cm, Design 1,
- Screw attached stainless steel grate ø 15 cm, Design 1

... to be supplied and professionally installed while observing the manufacturer's instructions.

Art.-No.: _____
 Material: _____ .../unit
 Labour: _____ .../unit
 Total price: _____ .../unit

_____ units of

Schlüter®-KERDI-DRAIN is a stainless steel grate with frame and integrated odour trap, to be installed as part of the surface covering, matching the height of the assembly.

- Screw attached stainless steel grate 10 x 10 cm, Design 1,
- Screw attached stainless steel grate V4A 10 x 10 cm, Design 1,
- Stainless steel grate 10 x 10 cm, Design 1,
- Screw attached stainless steel grate, oil-rubbed bronze 10 x 10 cm, Design 1,
- Stainless steel grate 10 x 10 cm, Design 2,
- Stainless steel grate 10 x 10 cm, Design 3,
- Covering support 10 x 10 cm, Design 4,

... to be supplied and professionally installed while observing the manufacturer's instructions.

Art.-No.: _____
 Material: _____ .../unit
 Labour: _____ .../unit
 Total price: _____ .../unit

_____ units of

Schlüter®-KERDI-DRAIN KD BH 40 as a horizontal floor drain set without odour trap, drain DN 40 (40 mm) with rigid connection,
 Application area: Interior areas

... to be supplied and professionally installed while observing the manufacturer's instructions.

Art.-No.: _____
 Material: _____ .../unit

Labour: _____ .../unit
 Total price: _____ .../unit

_____ units of

Schlüter®-KERDI-DRAIN KD BH 50 GV as a horizontal floor drain set with odour trap, inlet DN 40 (40 mm), drain DN 50 (50 mm) with pivot connection

... to be supplied and professionally installed while observing the manufacturer's instructions.

Art.-No.: _____
 Material: _____ .../unit
 Labour: _____ .../unit
 Total price: _____ .../unit

_____ units of

Schlüter®-KERDI-DRAIN KD BH 50/70 GV as a horizontal floor drain set with odour trap, inlet DN 40 (40 mm), drain DN 50/70 (50/75 mm) with pivot connection,

Application area: Interior areas

... to be supplied and professionally installed while observing the manufacturer's instructions.

Art.-No.: _____
 Material: _____ .../unit
 Labour: _____ .../unit
 Total price: _____ .../unit

_____ units of

Schlüter®-KERDI-DRAIN KD BH 50 as a horizontal floor drain set without odour trap, drain DN 50 (50 mm) with rigid connection,
 Application area: Exterior areas

... to be supplied and professionally installed while observing the manufacturer's instructions.

Art.-No.: _____
 Material: _____ .../unit
 Labour: _____ .../unit
 Total price: _____ .../unit

_____ units of

Schlüter®-KERDI-DRAIN KD BV 50 GV as a vertical floor drain with odour trap, drain DN 50 (50 mm),

Application area: Interior areas

... to be supplied and professionally installed while observing the manufacturer's instructions.

Art.-No.: _____
 Material: _____ .../unit
 Labour: _____ .../unit
 Total price: _____ .../unit

_____ units of

Schlüter®-KERDI-DRAIN KD BV 50 A as a vertical floor drain without odour trap, drain DN 50 (50 mm),

Application area: Exterior areas

... to be supplied and professionally installed while observing the manufacturer's instructions.

Art.-No.: _____
 Material: _____ .../unit

Labour: _____ .../unit
 Total price: _____ .../unit

_____ units of

Schlüter®-KERDI-DRAIN KD BV as a vertical floor drain without odour trap
 KD BV 50 drain DN 50 (50 mm)
 KD BV 70 drain DN 70 (75 mm)
 KD BV 100 drain DN 100 (110 mm)

Application: Interior/exterior areas

... to be supplied and professionally installed while observing the manufacturer's instructions.

Art.-No.: _____
 Material: _____ .../unit
 Labour: _____ .../unit
 Total price: _____ .../unit

Text template for accessories:

_____ units of

Schlüter®-KERDI-DRAIN KD 10 MSB as a two level drainage system for connection to the lower waterproofing plane and the surface, with a connection collar, a stainless steel clamping ring, and a perforated inlet element

... to be supplied and professionally installed while observing the manufacturer's instructions.

Art.-No.: _____
 Material: _____ .../unit
 Labour: _____ .../unit
 Total price: _____ .../unit

_____ units of

Schlüter®-KERDI-DRAIN 15 R as a renovation insert made of stainless steel for installation in new tile coverings installed over existing drains ... to be supplied and professionally installed while observing the manufacturer's instructions.

Art.-No.: _____
 Material: _____ .../unit
 Labour: _____ .../unit
 Total price: _____ .../unit

_____ units of

Schlüter®-KERDI-DRAIN KD 15 RL as a two part stainless steel renovation frame and two part plastic grate for subsequent installation over an existing downspout ø 50-75 mm

... to be supplied and professionally installed while observing the manufacturer's instructions.

Art.-No.: _____
 Material: _____ .../unit
 Labour: _____ .../unit
 Total price: _____ .../unit