

# DeltaTray Trent



**DeltaTray Trent** is a high performance shower tray former with flexible components that compliment all possible bathroom layouts to provide a totally waterproof solution.

The Trent range offers features such as a factory fitted gasket providing a secondary waterproofing membrane.

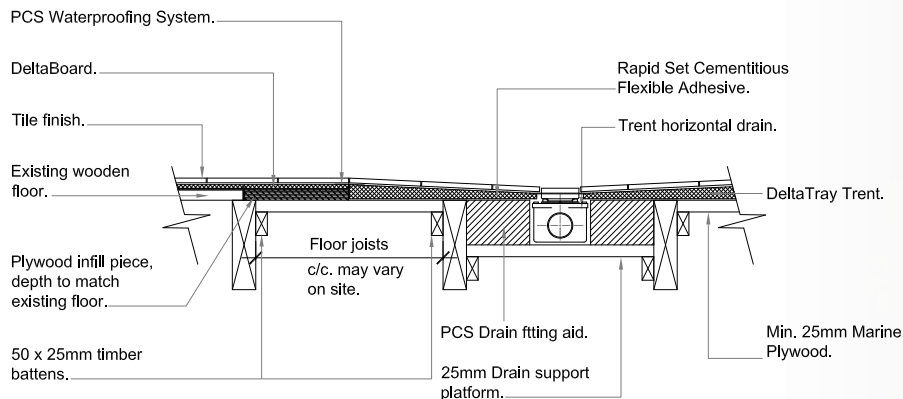
The Trent comes with a unique linear tile-into grate/frame configuration that provides a secondary under tile drainage system.

Our shower tray formers are manufactured with a specially developed hard wearing coating that creates an incredibly tough surface highly resistant to impact making the tray suitable for mosaic tiles as small as 20mm x 20mm.

## Benefits

- ✓ Extensive range
- ✓ Suitable for wood or concrete floors
- ✓ Waterproof tile ready surface
- ✓ Easy to install
- ✓ Suitable for use with electric under-floor heating
- ✓ Thermally Insulating
- ✓ Lightweight
- ✓ Suitable for large format tiles and mosaics tiles 20mm x 20mm or greater. *(Tiles must be min 8mm thick)*

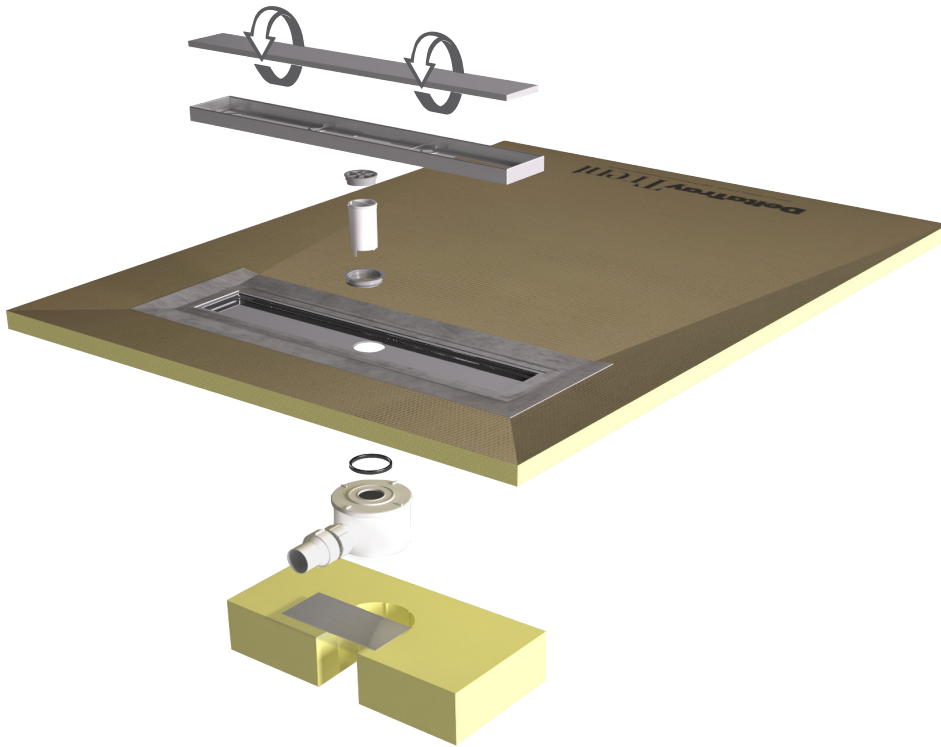
## Typical Floor Selection





# Technical Information

## DeltaTray Trent



**36 litres**

**Per Minute Drainage**  
(Tested under 15mm head of water, flow rate could be reduced to 27lpm in actual shower conditions)



**Suitable for large format tiles and mosaics tiles 20mm x 20mm or greater**  
(Tiles must be min 8mm thick)



**Sealed Gasket**



**Secondary Under Tile Drainage**



**Universal Grate**  
(Tile-into or brushed stainless steel)

**DeltaTray Trent** uses a drain body which has a drainage capacity of \*36lpm (tested under a 15mm head of water with a standard horizontal drain) \*drainage capacity can vary in actual showering conditions depending on many live factors which could reduce the flow capacity to around 27lpm. DeltaTray Trent is also available with a side drain to accommodate your design needs, to complete your luxurious wetroom.

**DeltaTray Trent** requires ancillary components such as a drain body, drain fitting aid and a PCS waterproofing kit. A comprehensive range of ancillary components and fixing materials is available to complete your wetroom project.

Supplied with a universal tile-into grate finished in satin brushed stainless-steel, the grate can be fitted with the brushed stainless face, or if preferred the grate can be rotated and “tiled-into” reducing the visibility of the drain location providing a modern minimalistic look.

### Tray Depth Options

Fall to drain -20mm



### Technical Data

Tray Must be supported by Sub Frame

Suitable for large format tiles (Minimum 8mm thick)

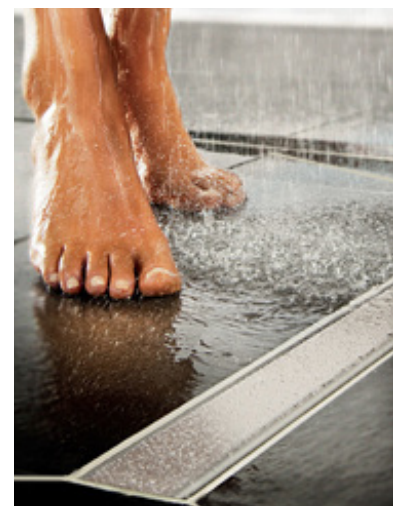
Suitable for mosaic tiles (20mm x 20mm or greater & minimum 8mm thick)

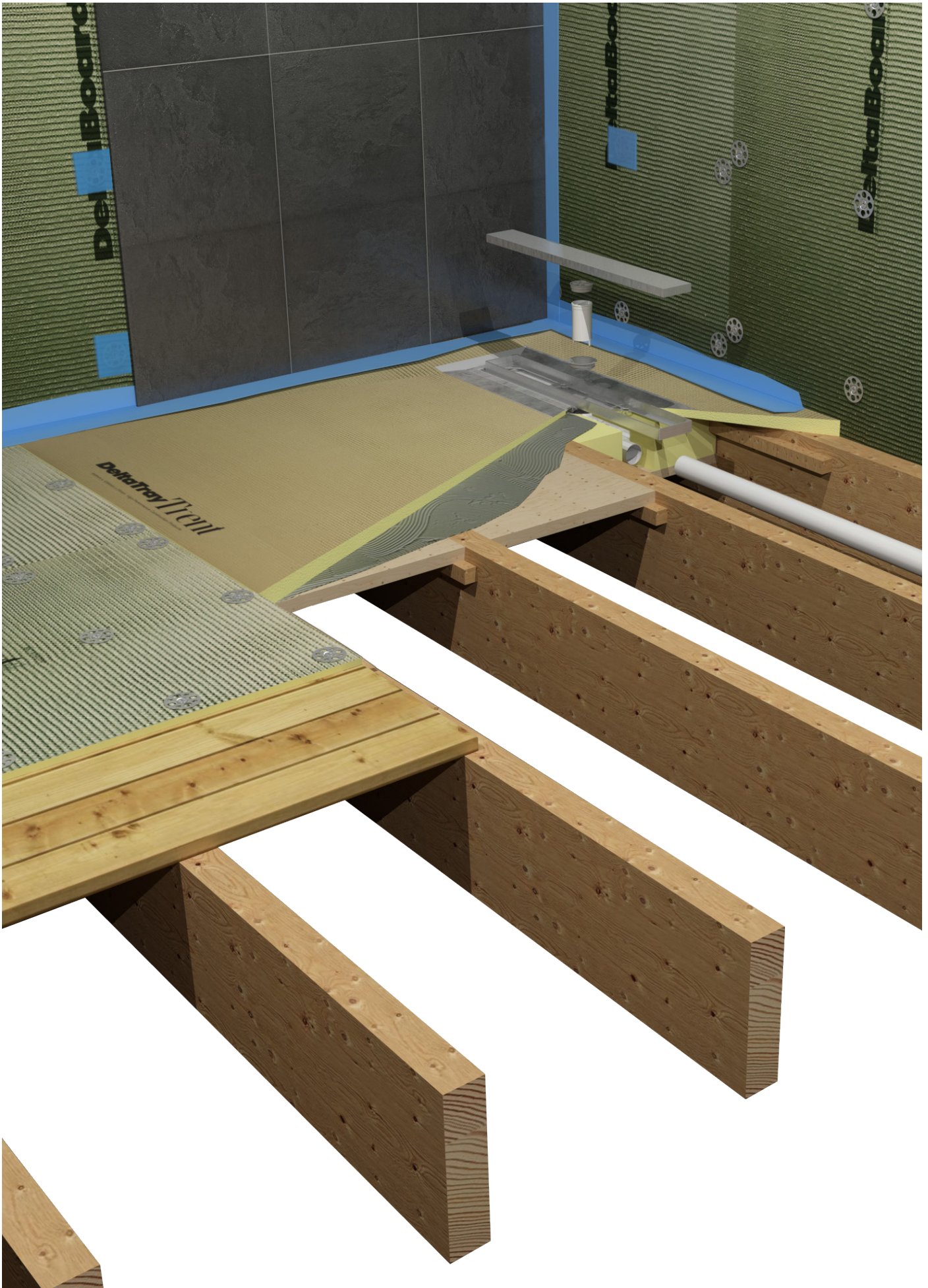
**Drainage**  
(Horizontal Drain 50mm Water Seal Trap)

Max 36 lpm tested under 15mm head water  
Min 27 lpm tested in shower conditions

**Drainage**  
(Vertical Drain 50mm Water Seal Trap)

Max 28 lpm tested under 15mm head water  
Min 27 lpm tested in shower conditions





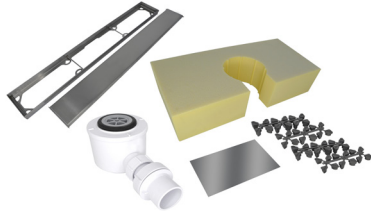
# DeltaTray Trent

## Drain Kit Options



A Drain Kit is required with the DeltaTray Trent, the table below shows all drain kits available.

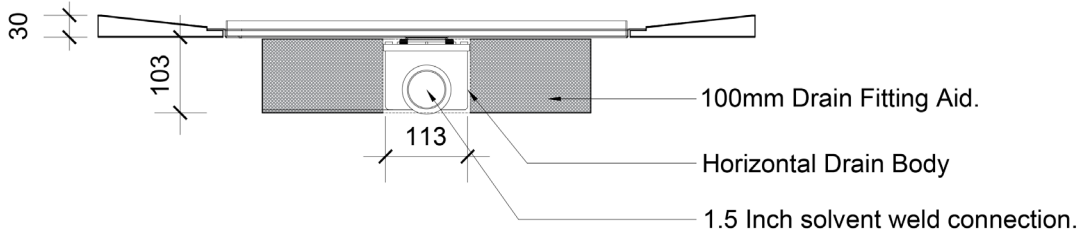
Product ID  
**J0209**



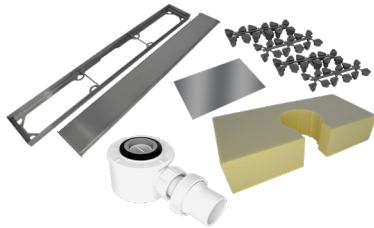
### For use with Timber Floors

**Trent Standard Drain Kit including:**  
Horizontal Drain Body, Stainless Steel Tile-In-to Grate, Raising Spacers, 100mm Drain Fitting Aid & Stainless Steel Cover Plate (50mm Water Seal Trap)

**36**  
Litres Per  
Minute Drainage



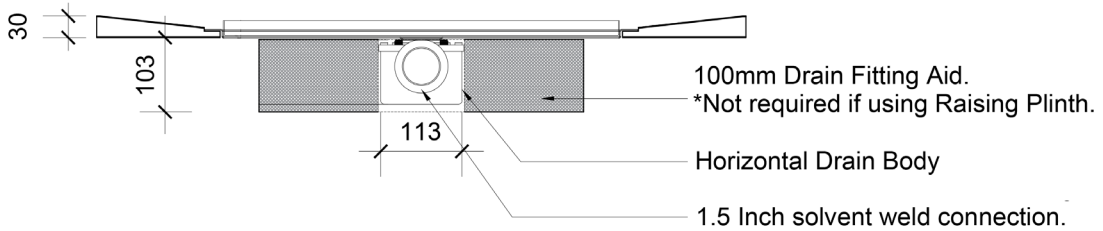
Product ID  
**J0206**



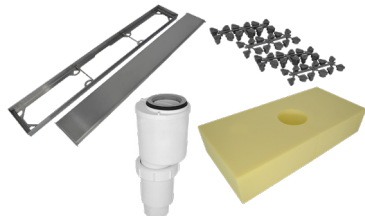
### For use with Solid Floors/ Raising Plinths

**Trent Raised Drain Kit including:**  
Horizontal Drain Body, Stainless Steel Tile-In-to Grate, Raising Spacers, 100mm Drain Fitting Aid & Stainless Steel Cover Plate (50mm Water Seal Trap)

**36**  
Litres Per  
Minute Drainage



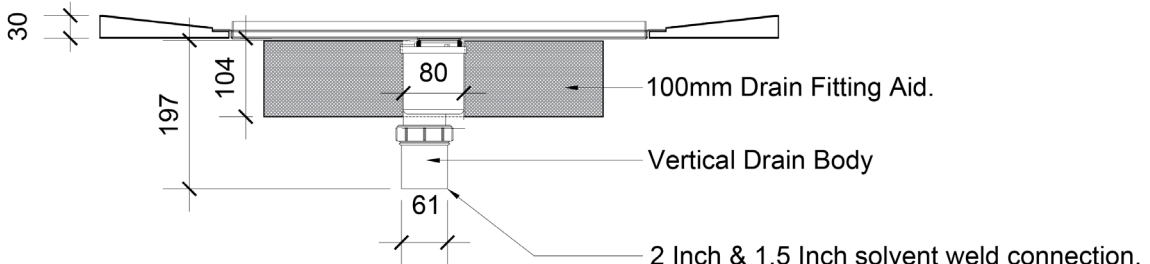
Product ID  
**J0211**

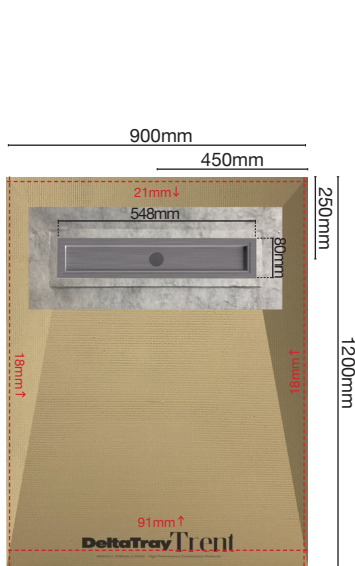


### For use with All Floor Types

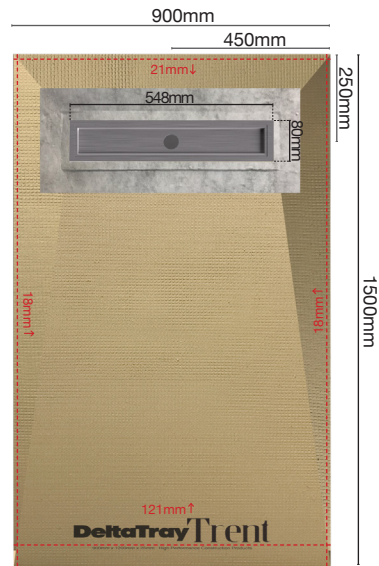
**Trent Vertical Drain Kit including:**  
Vertical Drain Body, Stainless Steel Tile-Into Grate, Raising Spacers & 100mm Drain Fitting Aid (50mm Water Seal Trap)

**28**  
Litres Per  
Minute Drainage



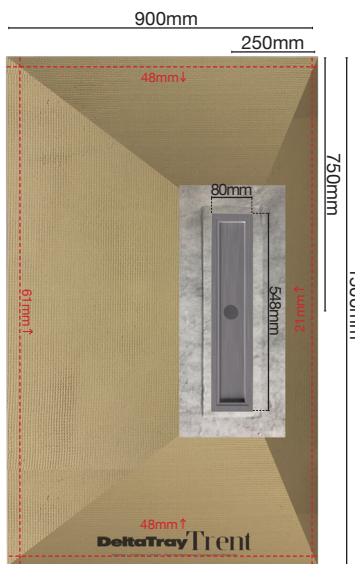


E0510

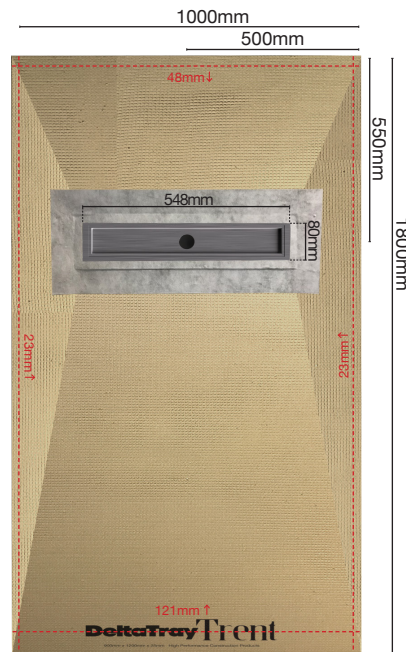


E0515

--- Denotes Maximum Trimming Dimensions



E0520



E0530

### Linear Drain Tray Sizes & Information

Product ID	Size of Tray	Thickness	Drain Position	Fall to Drain
E0510	900 x 1200mm	30mm	Linear Offset (End)	-20mm
E0515	900 x 1500mm	30mm	Linear Offset (End)	-20mm
E0520	900 x 1500mm	30mm	Linear Offset (Side)	-20mm
E0530	1000 x 1800mm	30mm	Linear Offset (End)	-20mm

■ Raising plinths available to suit all tray sizes above - See pages 26-29 for more details.