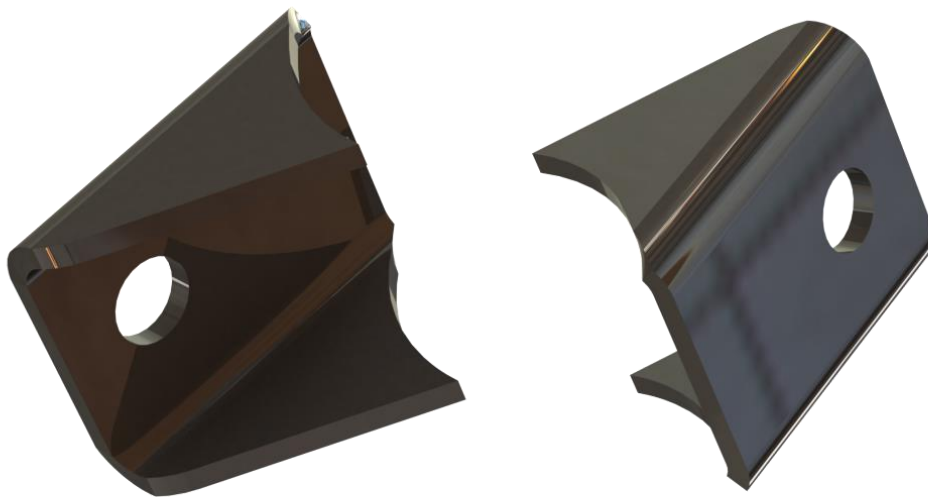


MRT-20012 sway bar weld brackets BMW E30 / E36

Kit content:

2x Sway bar weld bracket



Disclaimer:

- *Racing part with NO warranty*
- *Manufacturer disclaims all liability for direct, indirect, incidental or consequential damages, including damage or loss of equipment, cost of purchase or replacement of goods, accident or injuries, or claims of the purchaser that result from the use of the part*

Tools / equipment required for installation:

- Wire brush / abrasives for paint removal / cleaning of the parts
- Welding machine

Important notes:

- Fits strut tube sizes from 45mm to 60mm
- **Do not weld directly onto gas or oil filled shock body**
- Recommended to be used with E30 M3, E36 M3 or E46 -type drop links

Installation:

- 1. Disassemble shock from the strut tube**
- 2. Prepare and clean the area for welding**
- 3. Position and weld the sway bar tabs**

Reference part numbers:

E30 M3 strut left *31312225307*, right *31312225308*

E36 M3 3.2 strut left *31312228007*, right *31312228008*



If you have any questions, feedback or other comments regarding the kit please reach us via email / WhatsApp or social media direct message:



MRT Engineering



mrtengineering



+358 45 783 636 66



info@mrtengineering.fi

If you have problems / issues with the kit, please state where you have bought the kit, original Order No. and / or exact model of the kit you have / you supposed to have to ensure we can give you an accurate response.

All spare parts are available on our webshop and dealerships around the world:

<https://mrtengineering.fi/collections/spare-parts>

<https://mrtengineering.fi/pages/dealers>



MRT
Engineering

MRT Engineering Oy, FI31033454
Kuukuja 12
33420 Ylöjärvi, Finland
info@mrtengineering.fi
+358 45 783 636 66