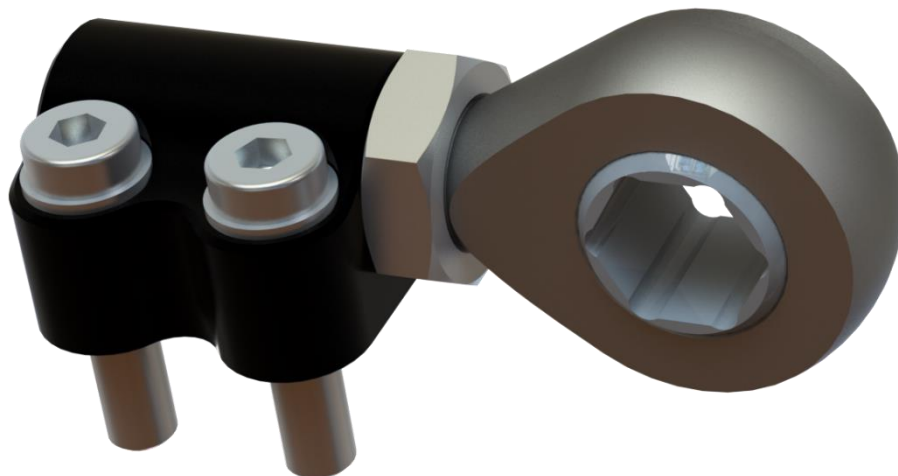


MRT-20009 FCAB E30 / E36 / E46 instructions

Kit content:

- 2x Front control arm rear bushing (pre-assembled)
- Mounting hardware (as in the picture)



Disclaimer:

- Racing part with NO warranty
- Manufacturer disclaims all liability for direct, indirect, incidental or consequential damages, including damage or loss of equipment, cost of purchase or replacement of goods, accident or injuries, or claims of the purchaser that result from the use of the part

Tools / equipment required for installation:

- 7mm hex key
- 30mm wrench
- Torque wrench

Torque rates for the bolts / screws / nuts:

- M10 hex screws 47Nm
- M20x1.5 lock nuts 100Nm

Important notes:

- Fits only BMW E30 / E36 / E46 -type control arms, NOT E46 M3
- **Do not press rod ends into control arm, pressing may damage the ball or bearing liner, grind down the control arm end for easy slip fit by hand**

If you have any questions, feedback or other comments regarding the kit please reach us via email / WhatsApp or social media direct message:



MRT Engineering



mrtengineering



+358 45 783 636 66



info@mrtengineering.fi

If you have problems / issues with the kit, please state where you have bought the kit, original Order No. and / or exact model of the kit you have / you supposed to have to ensure we can give you an accurate response.

All spare parts are available on our webshop and dealerships around the world:

<https://mrtengineering.fi/collections/spare-parts>

<https://mrtengineering.fi/pages/dealers>



MRT
Engineering

MRT Engineering Oy, FI31033454
Kuukuja 12
33420 Ylöjärvi, Finland
info@mrtengineering.fi
+358 45 783 636 66