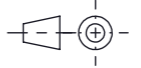
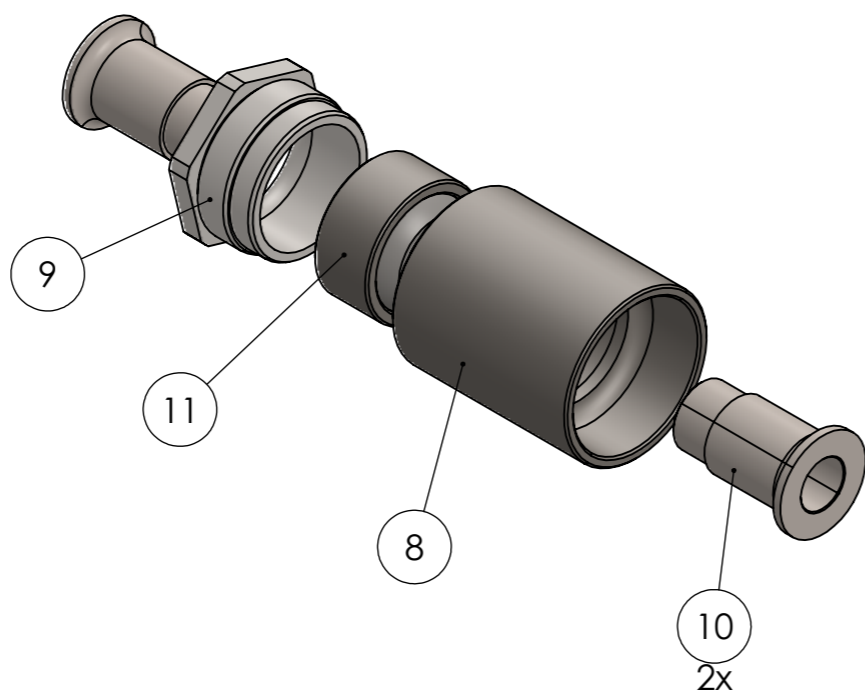
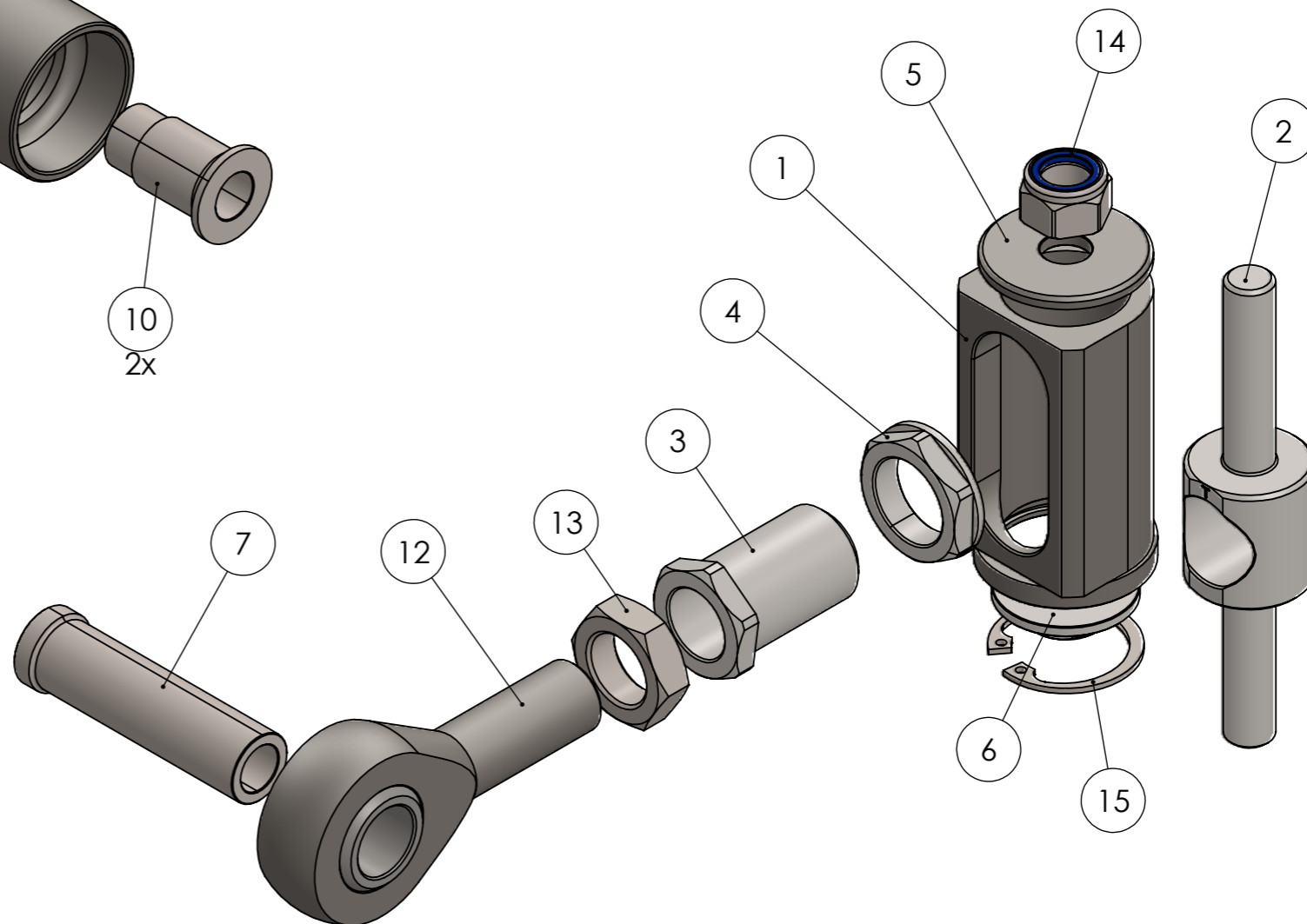
			General tolerance SFS-EN 2768-m Welded structures EN-ISO 13920		Description E30 Gr.A DTM style trailing arm adjuster kit	
					Specification	
	Name	Date		Number MRT-20007		Rev A
Drawn By	ML	19/09/2021				
Approved By	NL	18/10/2021				
Type			Finish	Material	Mass	Scale 1:1 Sheet 1 / 2 A3



#	Torque rate, Nm
4, 9, 13	100
14	40



Use Loctite on part #4, #9 and #11

#	PART NUMBER	DESCRIPTION	SPEC	QTY. per side
1	MRT-10007-1	Adjuster block		1
2	MRT-10007-2	Camber adjuster barrel		1
3	MRT-10007-3	Toe adjuster screw		1
4	MRT-10007-4	Toe adjuster lock nut		1
5	MRT-10007-5	Top cap		1
6	MRT-10007-6	Base plate		1
7	MRT-10007-7	18mm sleeve		1
8	MRT-10007-8	Bearing cup		1
9	MRT-10007-9	Bearing retainer, M35x1.5		1
10	MRT-10007-10	16mm bearing spacer		2
11	GEBJ16C	spherical bearing		1
12	XM18x1.5	rod end		1
13	DIN936 M18x1.5	half nut		1
14	DIN985 M12x1.5	nyloc nut		1
15	DIN472 34x1.5	circlip		1

		General tolerance SFS-EN 2768-m		Description E30 Gr.A DTM style trailing arm adjuster kit							
		Welded structures EN-ISO 13920		Specification							
<table border="1"> <tr> <td>Name</td> <td>Date</td> </tr> <tr> <td>ML</td> <td>19/09/2021</td> </tr> <tr> <td>NL</td> <td>18/10/2021</td> </tr> </table>		Name	Date	ML	19/09/2021	NL	18/10/2021		Number MRT-20007		Rev A
Name	Date										
ML	19/09/2021										
NL	18/10/2021										
Type	Finish	Material	Mass	Scale 1:1.5	Sheet 2 / 2 A3						