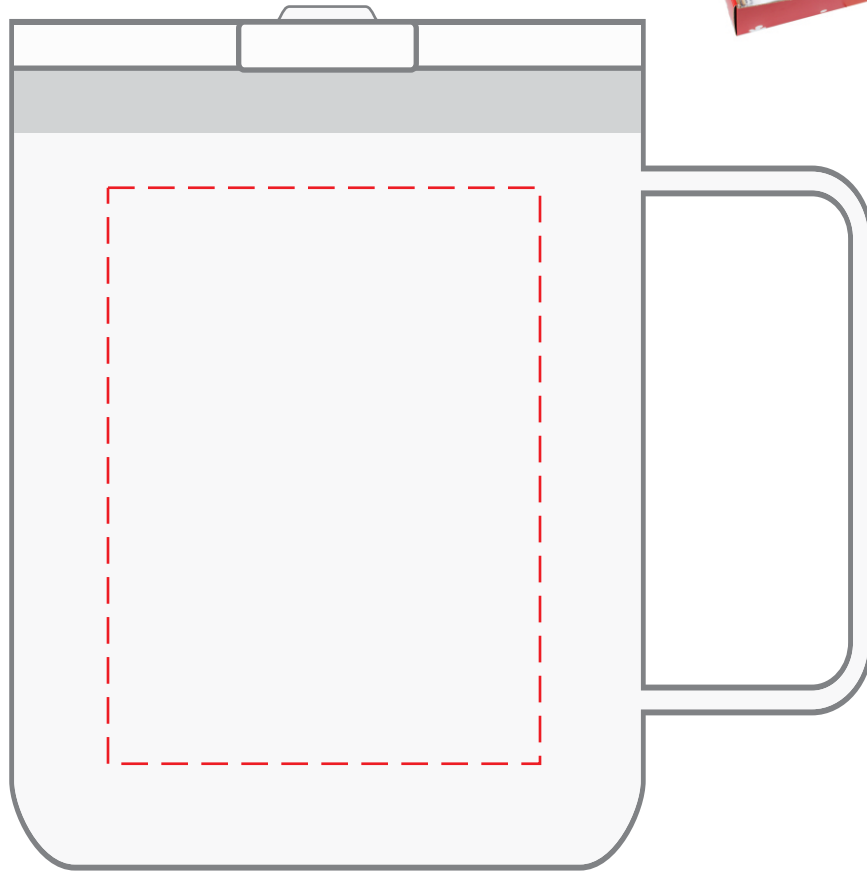


# DGSM-CL1

## 12 oz. Slim Camping Mug

### DIRECT IMPRINT



Actual Size (100%)

**(2 COLOR MAX)**  
**IMPRINT AREA: 2.25"W X 3"H**

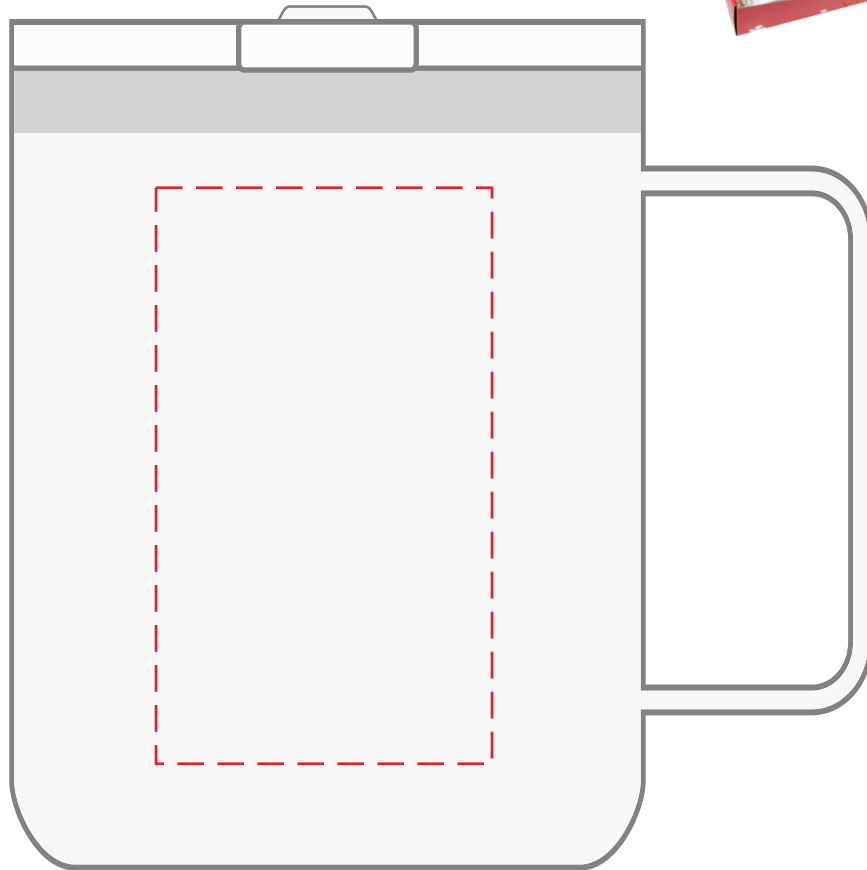


- Red Layout Lines Do NOT Print.

# DGSM-CL1

## 12 oz. Slim Camping Mug

### LASER



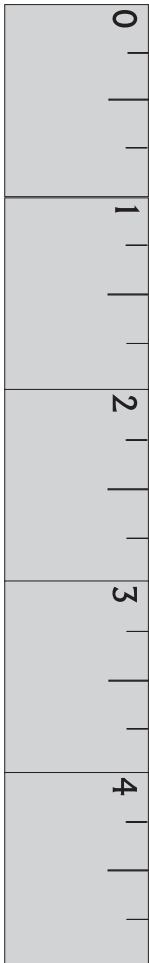
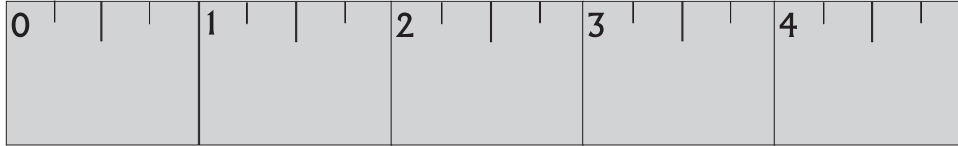
Actual Size (100%)

**IMPRINT AREA: 1.75"W X 3"H**



- Red Layout Lines Do NOT Print.

# DGSM-CL1 GRAHAM CRACKER LABEL



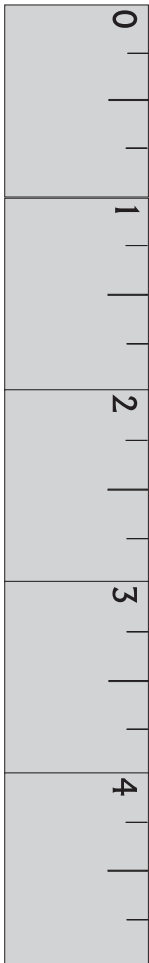
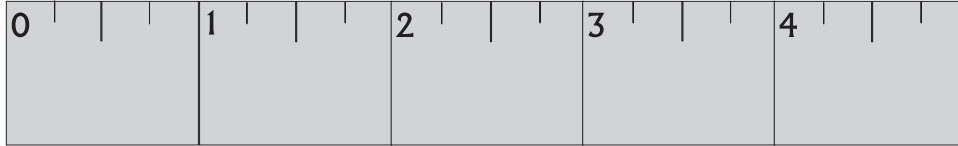
Actual Size (100%)

**LABEL AREA: 2.76" W X 1.63" H**  
**PRODUCT DIMENSIONS: 3" X 1 7/8"**

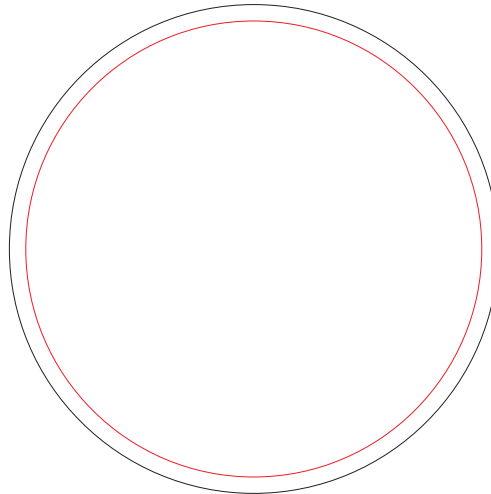


- Red Layout Lines Do NOT Print.

# DGSM-CL1 MARSHMALLOW BAG LABEL



Print to this line  
Bleed Line



Actual Size (100%)

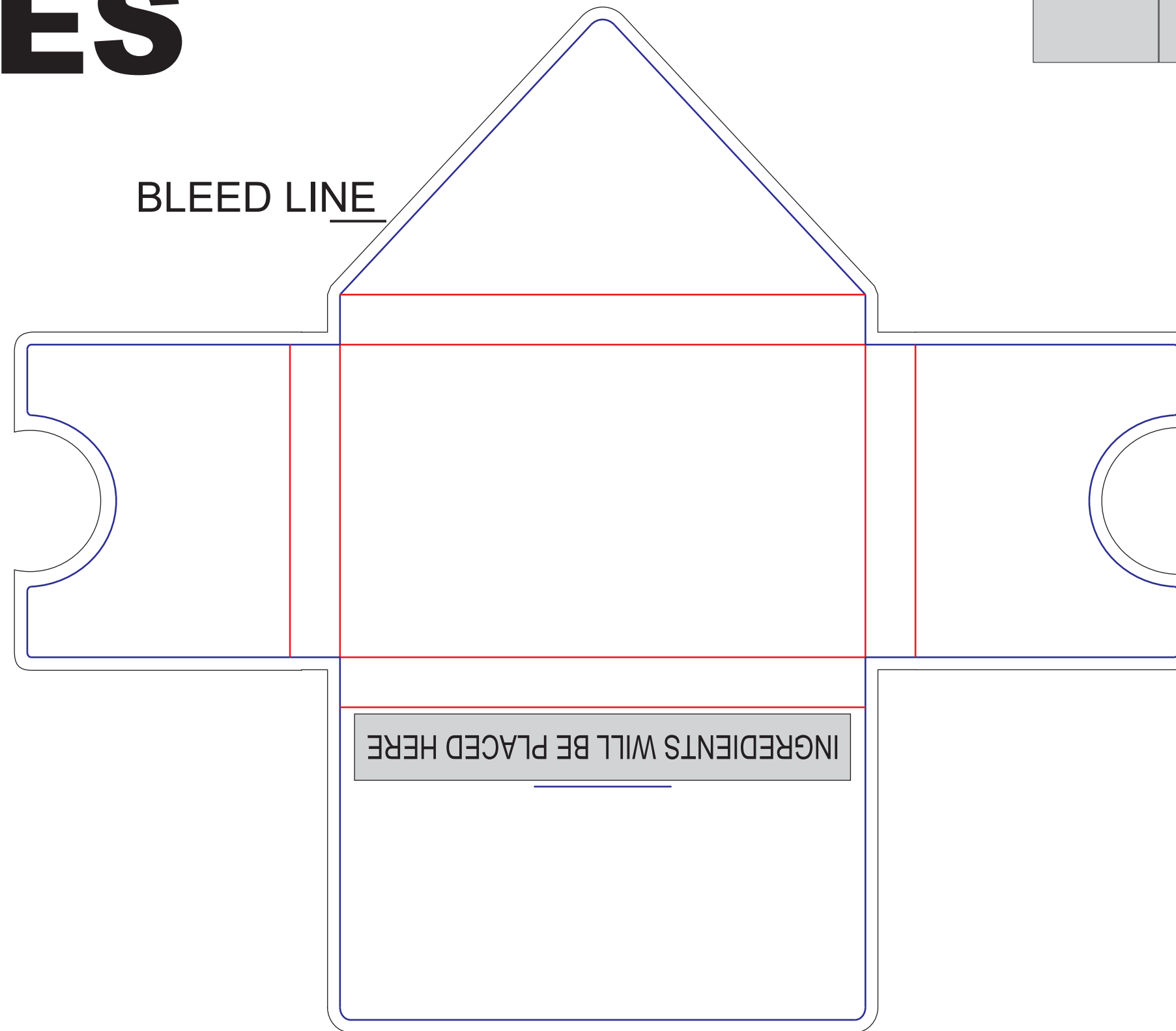
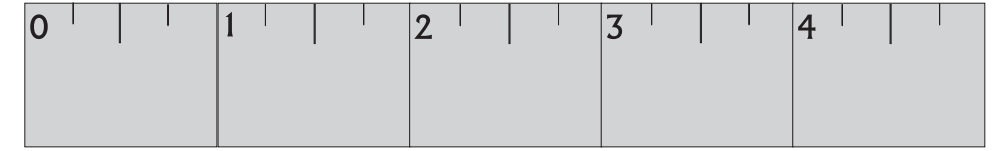
LABEL AREA: 2.375" Diameter



- Red Layout Lines Do NOT Print.

# DGSM-CL1 BCES

Actual Size (100%)

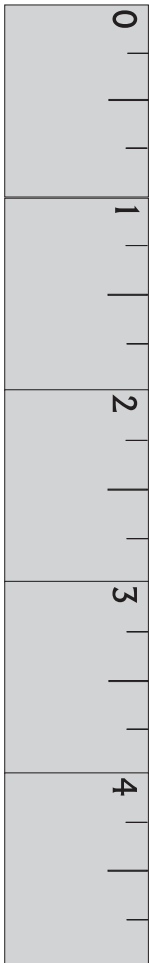
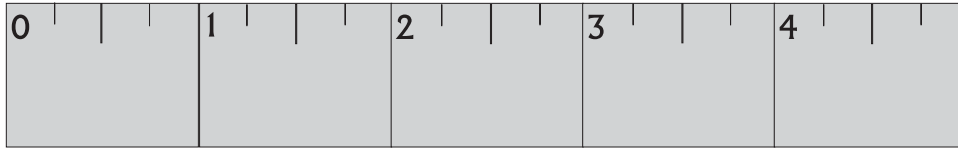


Blue lines are cut lines.  
Red Lines are score lines.  
Black line is bleed line.

 - Red Layout Lines Do NOT Print.

 - Black Layout Lines are Bleed Areas

# DGSM-CL1 3.5" CIRCLE LABEL



Print to this line  
Bleed Line

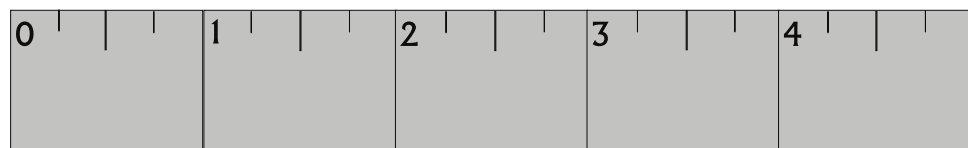


Actual Size (100%)

**\*CITYBONFIRE TEXT MUST REMAIN ON THE LABEL**  
LABEL AREA: 3.5" Diameter

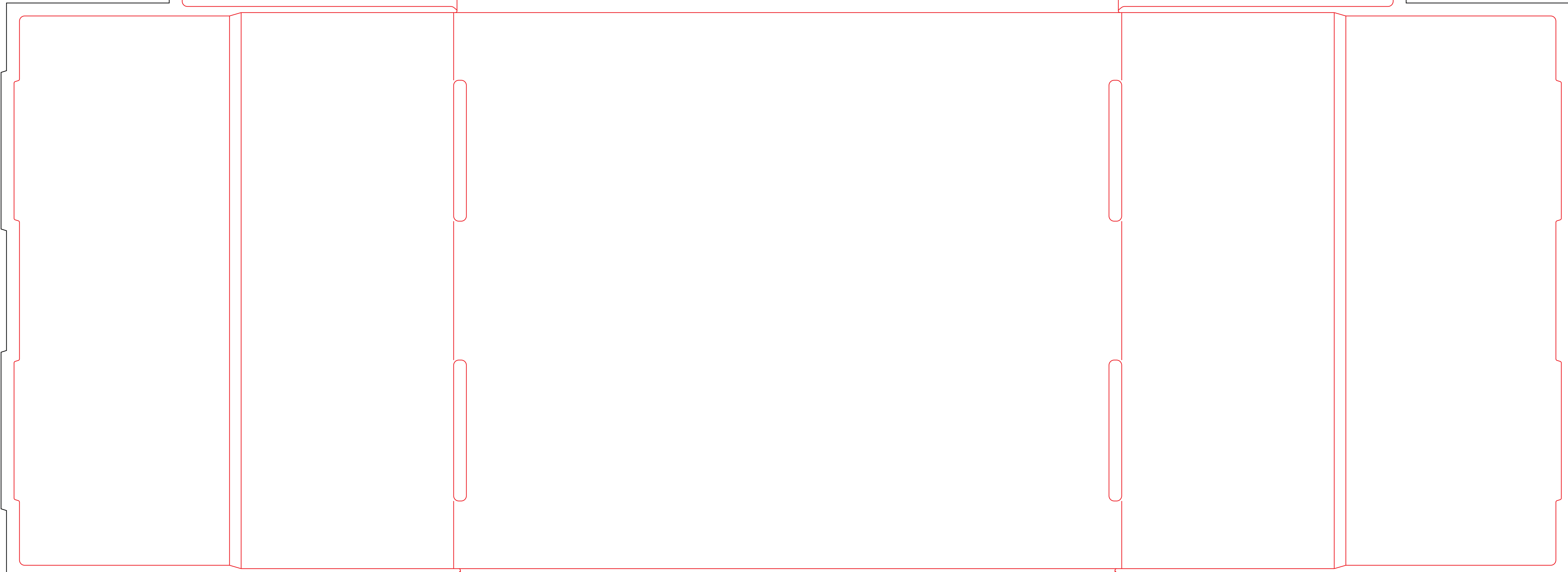
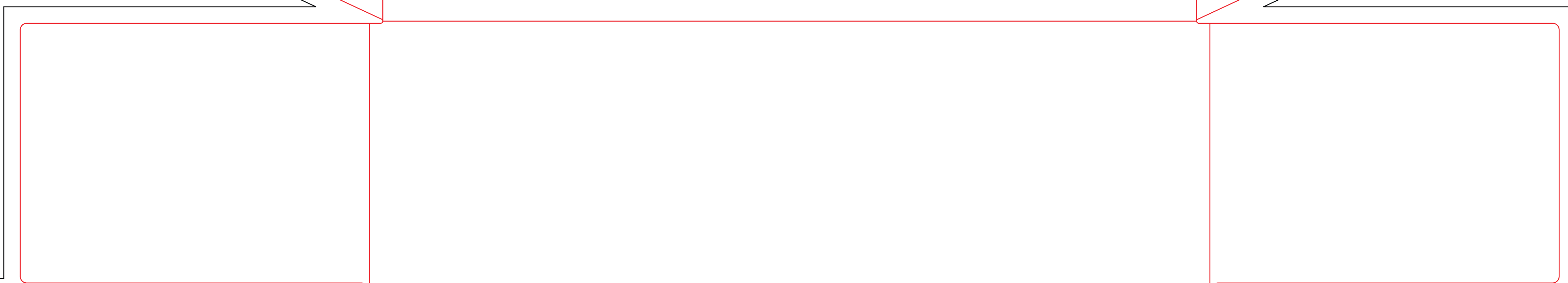
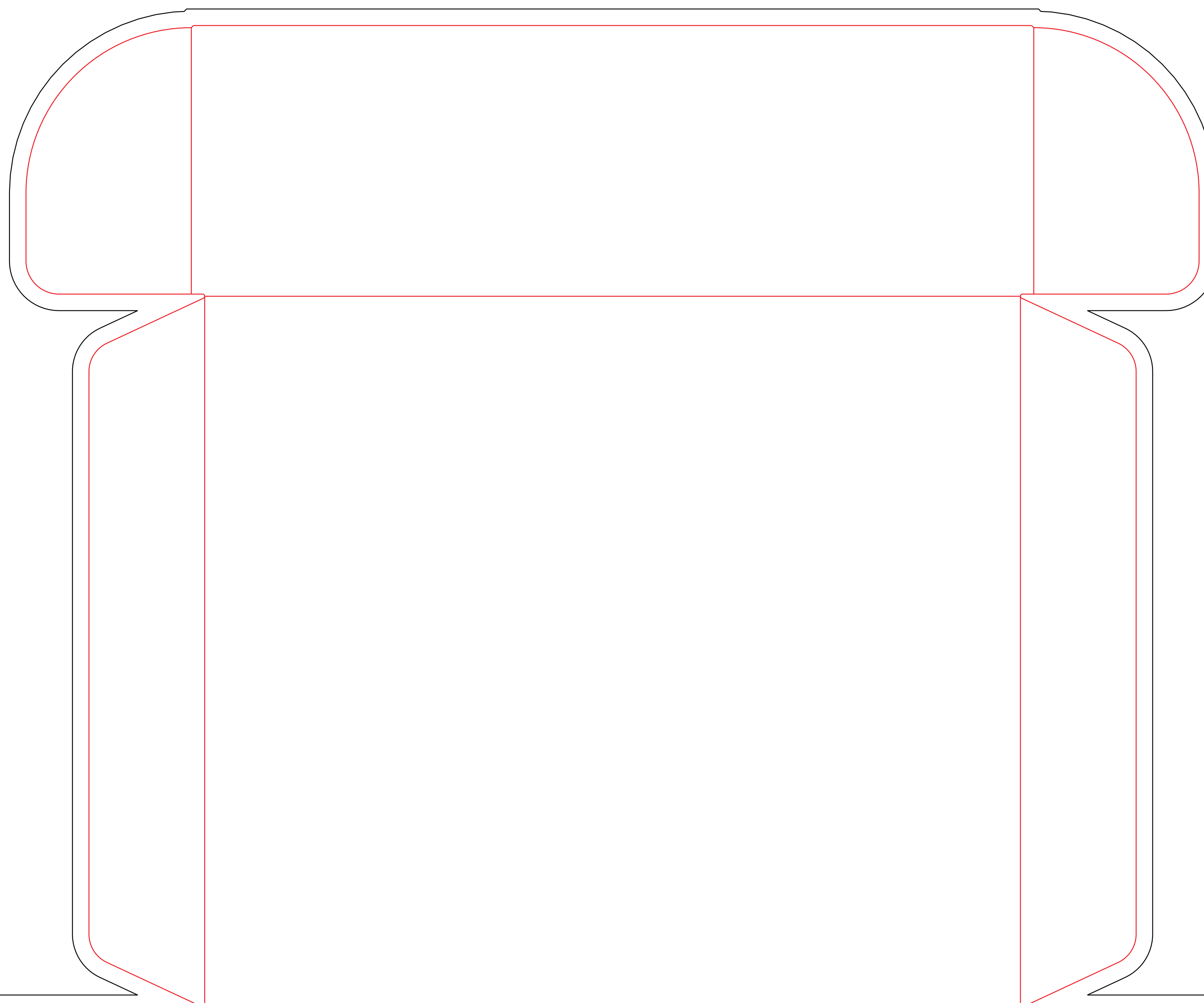


- Red Layout Lines Do NOT Print.



# DGSM-CL1 4 COLOR PROCESS MAILER BOX

Item shown for  
placement and fill.



**Actual Size (100%)**



- Red Layout Lines Do NOT Print.