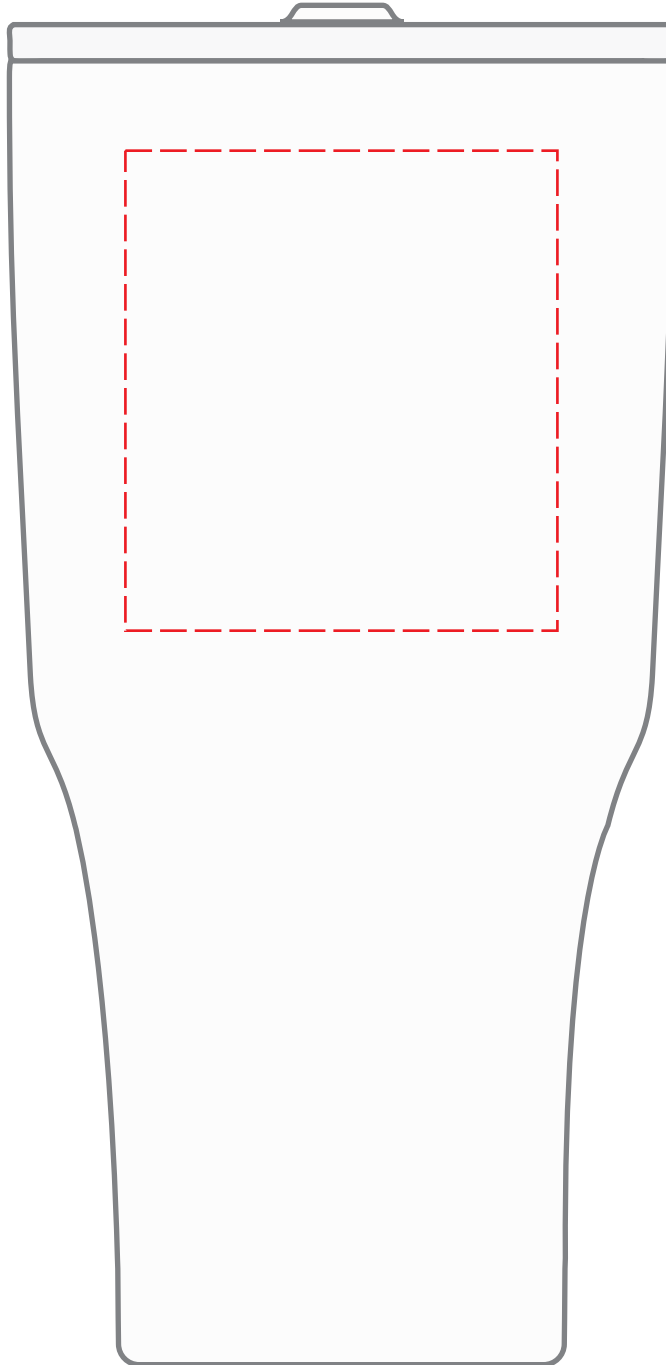


DGSG-CMU
20 oz. Tapered Tumbler
DIRECT IMPRINT



Actual Size (100%)

Item shown for
placement and fill.



IMPRINT AREA:
2.25"W X 2.5"H

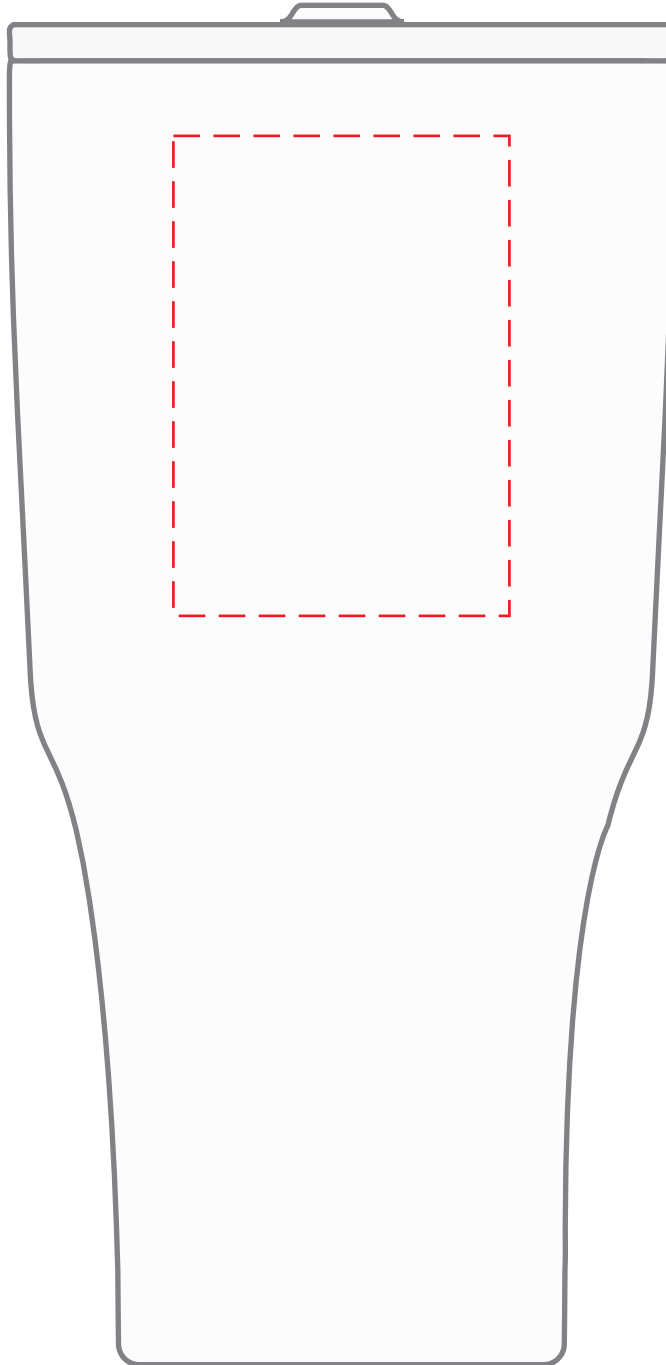


- Red Layout Lines Do NOT Print.

DGSG-CMU

20 oz. Tapered Tumbler

LASER



Actual Size (100%)

Item shown for
placement and fill.



IMPRINT AREA:
1.75"W X 2.5"H

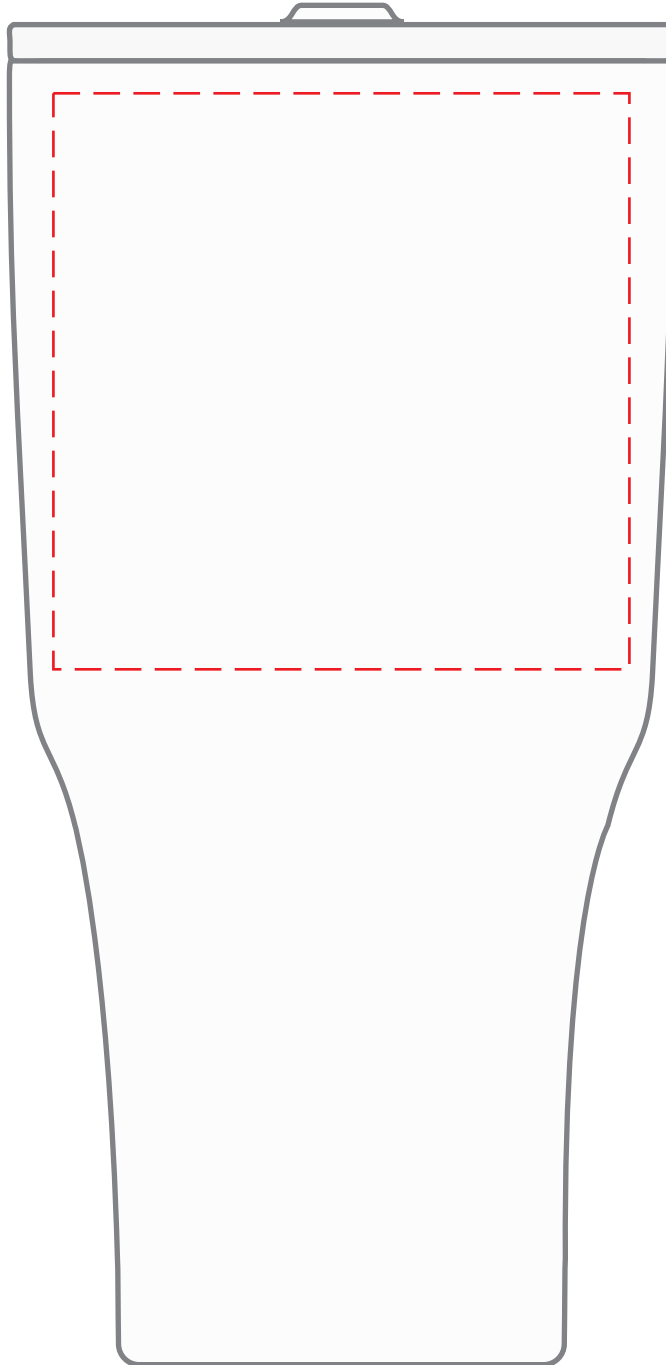


- Red Layout Lines Do NOT Print.

DGSG-CMU

20 oz. Tapered Tumbler

FULL COLOR - SIDE



Actual Size (100%)

Item shown for
placement and fill.

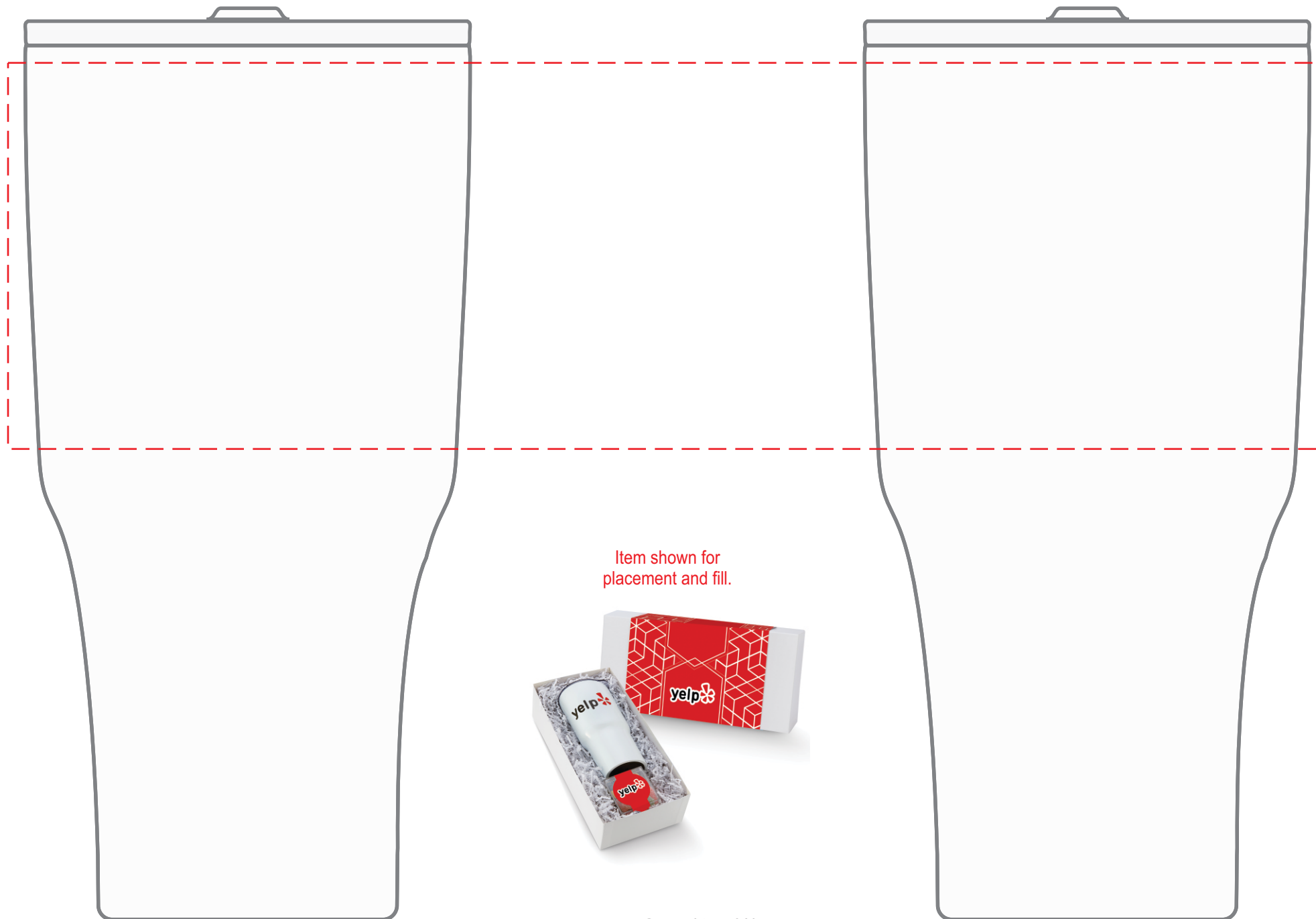


IMPRINT AREA:
3"W X 3"H



- Red Layout Lines Do NOT Print.

DGSG-CMU
20 oz. Tapered Tumbler
FULL COLOR - WRAP



Item shown for
placement and fill.

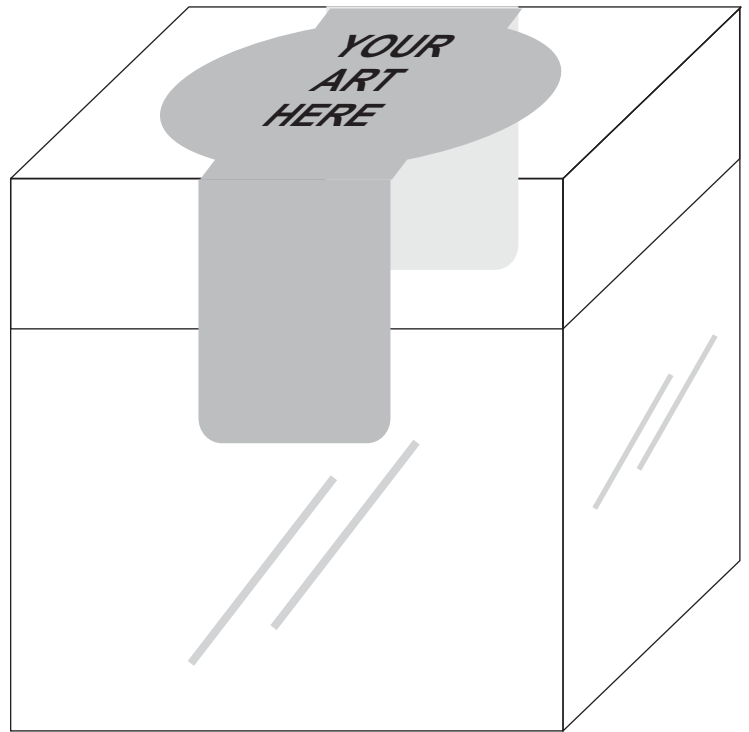
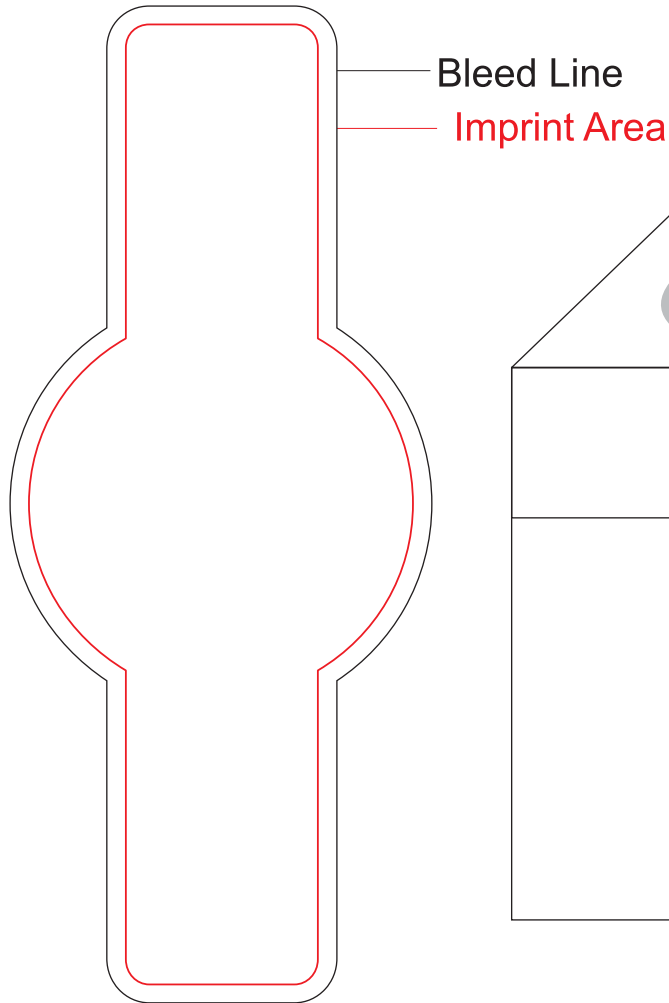
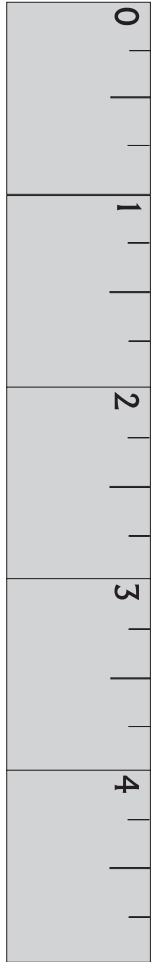
Actual Size (100%)

IMPRINT AREA: 10.25"W X 3"H



- Red Layout Lines Do NOT Print.

DGSG-CMU CANDY CUBE - ROUND LABEL



Item shown for placement and fill.

Actual Size (100%)

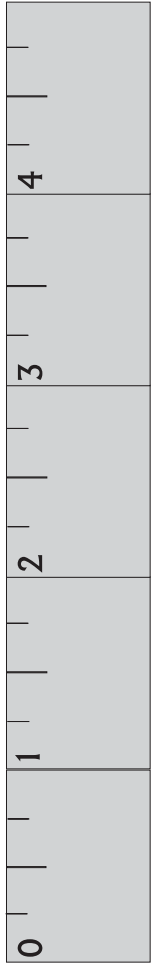


- Red Layout Lines Do NOT Print.



Item shown for placement and fill.

DGSG-CMU COMMUTER GIFT SET SLEEVE



A large rectangular area defined by red lines, intended for the design of the gift set sleeve. The area is divided into four horizontal sections by three red lines. The top section is the largest, followed by the second, third, and fourth sections from top to bottom.

Actual Size (100%)



- Red Layout Lines Do NOT Print.