

# **STINGER**

GOLF PRODUCTS

## **SG-5E**

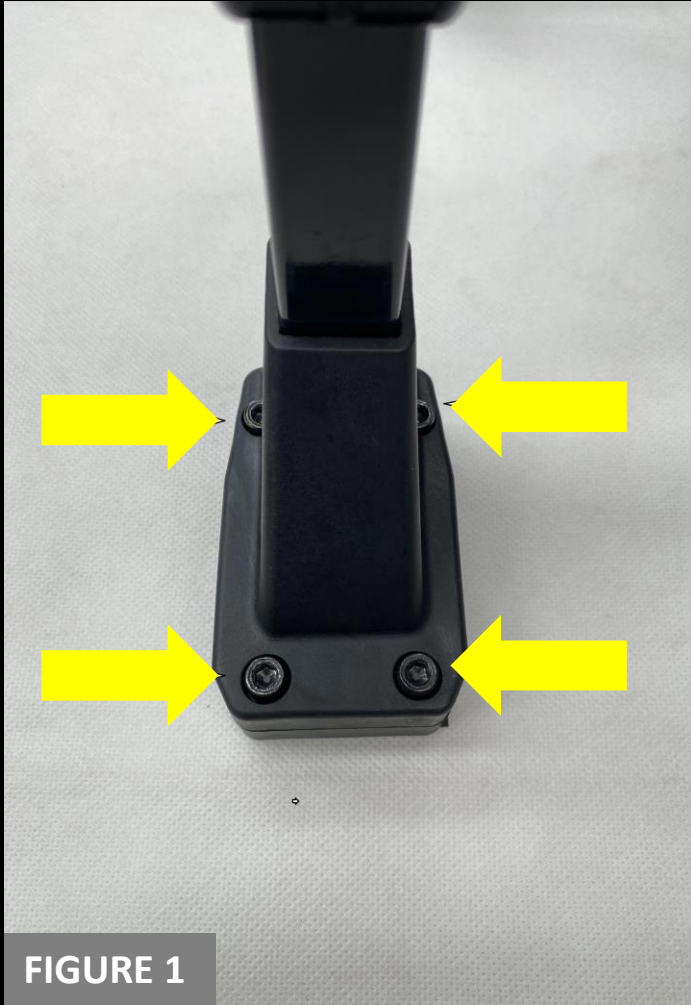
### **SEAT FITTING INSTRUCTIONS**



[WWW.STINGERGOLF.COM.AU](http://WWW.STINGERGOLF.COM.AU)



03 5924 6056



## STEP 1:

- Remove 4 Allen Key head screws from the seat mount bar as indicated by arrows in Figure 1 above.



## STEP 2:

- Fit Seat mount bar onto lower frame on either side of the buggy ensuring that the seat mounting is pushed all the way forward as per Figure 2 above. Insert the 4 screws indicated by arrows as per Figure above.



FIGURE 3

### STEP 3:

- Tighten the 4 screws with Allen Key provided as indicated in Figure 3.



FIGURE 4

### STEP 4:

- You are now ready to install the seat as indicated by yellow arrow in Figure 4.

# **STINGER**

**GOLF PRODUCTS**



[INFO@STINGERGOLF.COM.AU](mailto:INFO@STINGERGOLF.COM.AU)



11/6 Thomson Terrace,  
Dromana VIC 3936



[WWW.STINGERGOLF.COM.AU](http://WWW.STINGERGOLF.COM.AU)



03 5924 6056