

INSTRUCTION MANUAL

STRONG 210 series



*Read all instructions before using

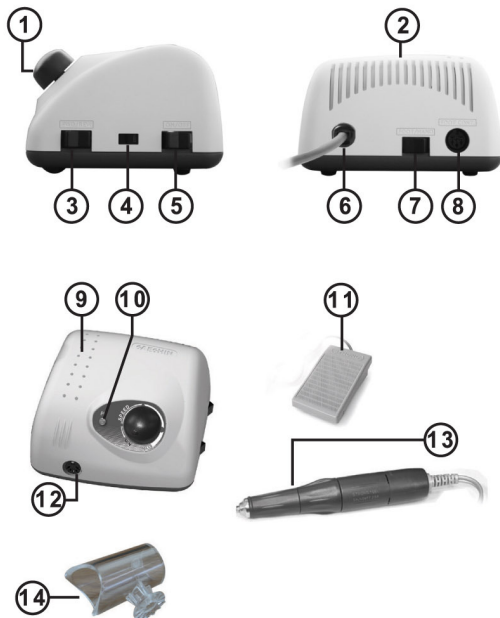


www.saeshin.com / sales@saeshin.com

Product Description

This product is mainly designed for dental laboratory use.
This product can be used for clinical use at dental clinic.
(It can be applied for the nail art, jewelry, wood carving and molding use.)

PART NAME



- | | |
|---------------------------|-------------------------|
| 1. SPEED CONTROL DIAL | 8. FOOT PEDAL CONNECTOR |
| 2. CONTROL BOX | 9. BUR HOLDER |
| 3. FORWARD-REVERSE SWITCH | 10. POWER LAMP |
| 4. VOLTAGE CHANGE SWITCH | 11. FOOT PEDAL |
| 5. POWER SWITCH | 12. MOTOR CONNECTOR |
| 6. POWER CORD | 13. HANDPIECE |
| 7. HAND-FOOT SWITCH | 14. HANDPIECE HOLDER |

TECHNICAL SPECIFICATIONS

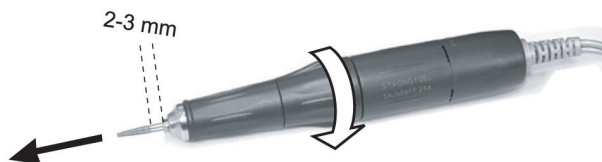
Unit type:
Dental Laboratory use.
Rotation speed:
0 ~ 35,000 / 0 ~ 45,000 rpm
Power supply:
AC100V 50/60Hz
AC110V/230V 50/60Hz
AC240V 50/60Hz

On/Off pedal
(Foot speed control)-option

Right / Left turning ability
Weight : Control Box : 1.3kg
Dimension (mm) : W140, L132, H86

Important Notes:

Please hold at least 2 - 3 mm distance between Handpiece point and burs.
Before bur changing, be sure to stop Handpiece running.
Otherwise, the Handpiece can be damaged.



Getting started and using the unit

- Before using the unit, make sure that the "Power switch (5) is in the "off" position.
- Connect the Handpiece to (12) on the Control box.
- Set the Speed Control Dial (1) at "0".
- Connect the Power Cord (6) to the outlet.
- Select bur and open the Chuck by turning to counterclockwise. Place the Bur in the open Chuck and lock it again by turning it clockwise.
- Check if the Bur is fitted correctly and if the chuck is securely locked.
- Select the rotation by Forward-Reverse Switch (3) (F = clockwise / R= counterclockwise)
- Now use the Speed Control Dial (1) and set the required speed.
- IMPORTANT:** when you change the rotation direction, it is crucial that you first switch "OFF" the Power Switch(5).
- IMPORTANT:** Before changing bur, it is also necessary to switch the power off (5) or set the Speed Control Dial (1) to "0".
- A foot pedal is in option available.
When using the Foot Pedal, connect it to the designated "Foot Pedal Connector (8) on the back of the control box. The "Power Switch (5) must be in the "off" position. You can now set the desired rotation speed.
You can now use the Foot Pedal (11) to switch the power on and off as and when desired.

Trouble shooting

Check that the unit is properly connected to the mains outlet.
Check that the hand unit is correctly connected to the main unit.
Check that the power switch is in the "ON" " " position.
Should the problems persist, please contact your service partner right away or contact to Saeshin Precision Co., Ltd.

Care and maintenance tips

1. Keep the inner workings of the hand unit as free as possible from dust and filing residue.
2. Use cleaning alcohol to remove dust from the outside of the unit and avoid any moisture on the inside.
3. Only use filing bits that conform to the standard 2,35 mm size, and avoid using rusty or damaged filing bits. Improper use such as this can cause excessive wear and tear to the bearings. Follow the manufacturer's safety procedures and keep to the designated safe speed.
4. Do not subject the hand unit to hard knocks, as this can damage the bearings. If you do drop the hand unit, check if the filing bit isn't twisted or damaged.

Keep a closer lookout for any signs of noise and/or overheating. If the hand unit is damaged, send it for repair right away.

Changing the carbon brushes

The carbon brushes in the hand unit motor should be changed once a year by qualified service personnel, either via your dealer or Saeshin directly.

Safety Instructions

Before using the unit:

- 1 Never set up the unit in a wet or humid environment.
- 2 Never bring the unit into direct contact with fire, gas, oxygen or hot objects such as cooker hot plates.

When operating the unit:

- 1 Environmental conditions
- 2 The hand unit and foot pedal must only be used with the unit with which they were supplied.
- 3 Suitable filing bits:
 - * Standard size: 2,35 mm
 - * Only use balanced filing bits with a rounded shaft end.
 - * You must not use rusty, twisted or damaged filing bits.
- 4 Use the rotation speed control with care.
- 5 Switch off the unit before changing the rotation direction.
- 6 Switch off the unit before changing filing bits.
- 7 Take every possible precaution not to drop the hand unit or damage it in any other way.
- 8 Should problems with the hand unit arise, please send it for repair right away.
- 9 Do not wash or lubricate the hand unit.
- 10 Never switch on the unit when the chuck is open.
- 11 When storing the unit, insert the test bit into the chuck.

*"This appliance is not intended for use by persons (including children) with reduced physical, sensory or mental capabilities, or lack of experience and knowledge, unless they have been given supervision or instruction concerning use of the appliance by a person responsible for their safety."

"Children should be supervised to ensure that they do not play with the appliance."

Warranty Information

1 year

Warranty does not include misuse or normal wear of bearing, carbon brush, collet chuck, spindle and armature.

Safety Instructions

Danger !

- * Never bring the unit into direct contact with water or other liquids.
- * Do not touch the unit when your hands are wet.
- * Only use the unit with the specified mains voltage.

WARNING !

- * Never leave the unit unsupervised when there are children or persons inexperienced in using the unit nearby.
- * Only use the unit for the applications described in these operating instructions.
- Only use bits and accessories recommended by the manufacturer.
- * Never use the unit if the power cord is damaged, or if the unit has been dropped or come into contact with water.



This marking shown on the product or its literature, indicates that it should not be disposed with other household wastes at the end of its working life. To prevent possible harm to the environment or human health from uncontrolled waste disposal, please separate this from other types of wastes and recycle it responsibly to promote the sustainable reuse of material resources.

Household users should contact either the retailer where they purchased this product, or their local government office, for details of where and how they can take this item for environmentally safe recycling.

Business users should contact their supplier and check the terms and conditions of the purchase contract.
This product should not be mixed with other commercial wastes for disposal.

Transport and storage conditions:
Temperature : 10 ~ 40°C
Humidity : 30 ~ 75% RH
Atmospheric Pressure : 700 hPa to 1060 hPa



EC REP

SAESHIN PRECISION CO.,LTD.
HEAD OFFICE & FACTORY
93-15,PAHO-DONG
DALSEO-GU,KOREA
Tel. 82-53-587-2340 / 2341
Fax. 82-53-587-2347

EU representative
Dongbang Acuprime
Gater House, Gater Lane, Palace Gate,
Exeter, EX 1 1JL, United Kingdom
Tel. 44-1392-273908 Fax.44-1392-273909

SOM L041S E [Rev.0] 2010 .03.

www.saeshin.com / sales@saeshin.com