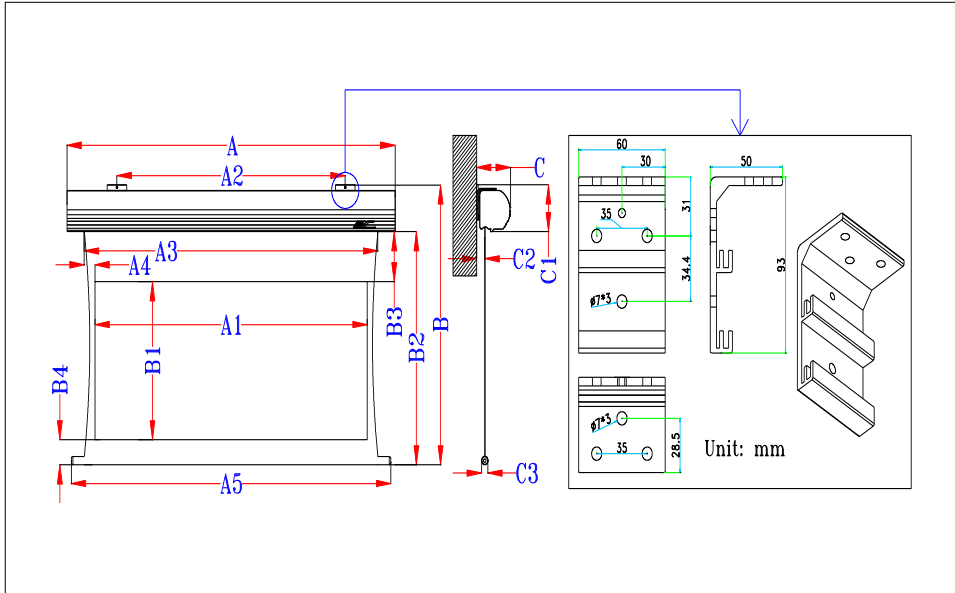


Elite Screens -Saker Tab-Tension CLR Series Dimension Table

Unit: mm																	Packing dimension					
Models	Screen Diag. & Aspect Ratio	Case L(A)	View W (A1)	ceiling bracket hole distance (A2)	Screen W (A3)	A4 Reserved L/R width (without black painting) (预留黑边)	Weight Bar L (A5)	Overall H with ceiling Bracket (B)	View H(B1)	Screen H(B2)	Top black masking (B3)	Bottom black masking (B4)	End cap H with bracket (B5)	End cap W with ceiling bracket (C)	End cap H with ceiling bracket (C1)	Screen Material to Wall Distance (C2)	Weight bar diameter (C3)	N.W (KGS)	G.W (KGS)	L	W	H
SKT100XH-CLR-E12	100"(16:9)	2581	2214	1781	2300	25	2501	1730	1245	1605	305	55	118	118	125	35	23	18.34	25.52	2796	213	196
SKT120XH-CLR-E12	120"(16:9)	3044	2657	2244	2743	25	2964	1979	1494	1854	305	55	118	118	125	35	23	21.64	29.66	3266	215	195
Unit: Inches																	N.W (IBS)	G.W (IBS)	L (inch)	W (inch)	H (inch)	
SKT100XH-CLR-E12	100"(16:9)	101.6	87.2	70.1	90.6	1.0	98.5	68.1	49.0	63.2	12.0	2.2	4.6	4.6	4.9	1.4	0.9	40.43	56.26	110.06	8.39	7.72
SKT120XH-CLR-E12	120"(16:9)	119.8	104.6	88.3	108.0	1.0	116.7	77.9	58.8	73.0	12.0	2.2	4.6	4.6	4.9	1.4	0.9	47.71	65.39	128.58	8.46	7.68

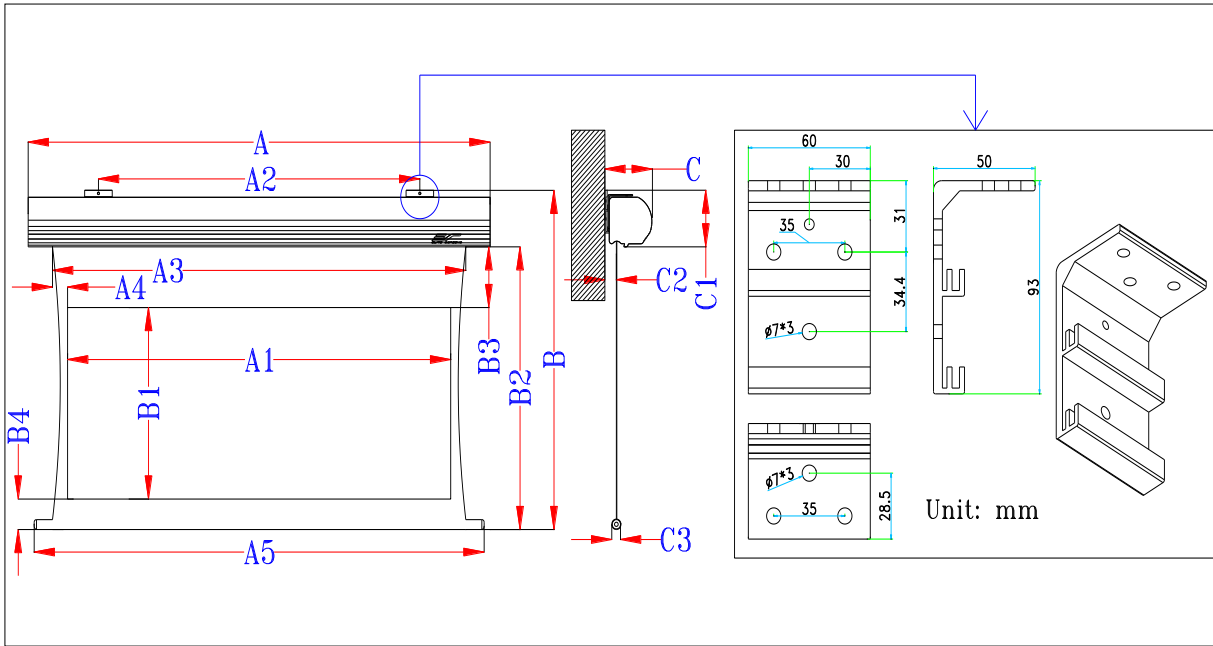
Note: Data Error be ±1"



Elite Screens - Saker Tab-Tension Series Dimension Table

Unit: mm																Packing dimension					
Models	Screen Diag. & Aspect Ratio	Case L(A)	View W (A1)	ceiling bracket hole distance (A2)	Screen W (A3)	L/R black masking (A4)	Weight Bar L (A5)	Overall H with ceiling Bracket (B)	View H(B1)	Screen H(B2)	Top black masking (B3)	Bottom black masking (B4)	End cap W with ceiling bracket (C)	End cap H with ceiling bracket (C1)	Screen Material to Wall Distance (C2)	Weight bar diameter (C3)	N.W (KGS)	G.W (KGS)	L	W	H
SKT84XHW-E12	84"(16:9)	2285	1860	1485	2060	100	2220	1519	1046	1411	305	60	102	108	35	23	10,60	14,32	2456	170	162
SKT84XHW-E24	84"(16:9)	2285	1860	1485	2060	100	2220	1524	1046	1716	610	60	102	108	35	23	11,00	14,66	2456	185	170
SKT92XHW-E24	92"(16:9)	2453	2037	1653	2237	100	2388	1924	1146	1816	610	60	102	108	35	23	12,60	15,90	2650	170	160
SKT100XHW-E12	100"(16:9)	2640	2214	1840	2414	100	2575	1718	1245	1610	305	60	102	108	35	23	12,30	16,16	2811	180	165
SKT100XHW-E24	100"(16:9)	2640	2214	1840	2414	100	2575	2023	1245	1915	610	60	102	108	35	23	12,61	16,23	2811	182	165
SKT110XHW-E12	110"(16:9)	2905	2435	2105	2675	120	2840	1843	1370	1735	305	60	102	108	35	23	14,66	18,92	3076	179	160
SKT110XHW-E24	110"(16:9)	2905	2435	2105	2675	120	2840	2148	1370	2040	610	60	102	108	35	23	15,10	19,08	3080	195	170
SKT120XHW-E10	120"(16:9)	3125	2657	2325	2897	120	3060	1916	1494	1808	254	60	102	108	35	23	14,98	19,58	3296	180	165
SKT120XHW-E20	120"(16:9)	3125	2657	2325	2897	120	3060	2170	1494	2062	508	60	102	108	35	23	15,84	20,42	3300	170	180
SKT135XHW-E6	135"(16:9)	3495	2989	2695	3229	120	3430	2001	1681	1893	152	60	102	108	35	23	17,17	21,83	3666	185	165
SKT100XWW-E10	100"(4:3)	2453	2032	1653	2272	120	2388	1946	1524	1838	254	60	102	108	35	23	13,60	17,56	2606	170	160
SKT100XWW-E24	100"(4:3)	2453	2032	1653	2272	120	2388	2302	1524	2194	610	60	102	108	35	23					
SKT120XWW-E9	120"(4:3)	2905	2438	2105	2678	120	2840	2226	1829	2118	229	60	102	108	35	23	15,44	19,64	3095	180	166
SKT100XWW-E12	100"(16:10)	2580	2154	1780	2394	120	2515	1819	1346	1711	305	60	102	108	35	23	12,70	16,40	2751	180	160
SKT100XWW-E24	100"(16:10)	2580	2154	1780	2394	120	2515	2124	1346	2016	610	60	102	108	35	23	13,26	17,06	2751	180	150
SKT106XWW-E12	106"(16:10)	2705	2283	1905	2483	100	2640	1900	1427	1792	305	60	102	108	35	23	13,20	17,10	2880	180	170
SKT110XWW-E10	110"(16:10)	2795	2369	1995	2569	100	2730	1903	1481	1795	254	60	102	108	35	23	13,96	17,92	2965	185	170
SKT120XWW-E12	120"(16:10)	3050	2585	2250	2825	120	2985	2088	1615	1980	305	60	102	108	35	23	16,00	20,20	3220	185	170
SKT100UH-E12-AUHD	100"(16:9)	2640	2214	1840	2454	120	2575	1718	1245	1610	305	60	102	108	35	23	13,10	16,80	2886	210	190
SKT100UH-E24-AUHD	100"(16:9)	2640	2214	1840	2454	120	2575	2023	1245	1915	610	60	102	108	35	23	13,10	16,80	2886	210	190
SKT110UH-E12-AUHD	110"(16:9)	2905	2435	2105	2675	120	2840	1843	1370	1735	305	60	102	108	35	23	14,30	18,09	3076	190	170
SKT110UH-E24-AUHD	110"(16:9)	2905	2435	2105	2675	120	2840	2148	1370	2040	610	60	102	108	35	23	14,58	18,50	3076	185	155
SKT100UH-E10-AUHD	100"(16:9)	3125	2657	2325	2897	120	3060	1916	1494	1808	254	60	102	108	35	23	16,24	21,68	3315	190	170
SKT120UH-E20-AUHD	120"(16:9)	3125	2657	2325	2897	120	3060	2170	1494	2062	508	60	102	108	35	23	16,18	20,44	3296	180	160
SKT100UH-E24-AUHD	100"(16:9)	2640	2214	1840	2454	120	2575	2023	1245	1915	610	60	102	108	35	23	13,22	17,18	2814	183	168
SKT110UH-E24-AUHD	110"(16:9)	2905	2435	2105	2675	120	2840	2148	1370	2040	610	60	102	108	35	23	14,56	18,48	3055	180	160
Unit: Inch																N.W (IBS)	G.W (IBS)	L (inch)	W (inch)	H (inch)	
SKT84XHW-E12	84"(16:9)	90.0	73.2	58.5	81.1	3.9	87.4	59.8	41.2	55.6	12.0	2.4	4.0	4.3	1.4	0.9	23.37	31.57	96.69	6.69	6.38
SKT84XHW-E24	84"(16:9)	90.0	73.2	58.5	81.1	3.9	87.4	71.8	41.2	67.6	24.0	2.4	4.0	4.3	1.4	0.9	24.25	32.32	96.69	7.28	6.69
SKT92XHW-E24	92"(16:9)	96.6	80.2	65.1	88.1	3.9	94.0	76.7	45.1	71.5	24.0	2.4	4.0	4.3	1.4	0.9	27.78	36.05	104.33	6.69	6.30
SKT100XHW-E12	100"(16:9)	103.9	87.2	72.4	95.0	3.9	101.4	67.6	49.0	63.4	12.0	2.4	4.0	4.3	1.4	0.9	27.12	35.63	110.67	7.09	6.50
SKT100XHW-E24	100"(16:9)	103.9	87.2	72.4	95.0	3.9	101.4	79.6	49.0	75.4	24.0	2.4	4.0	4.3	1.4	0.9	27.80	35.78	110.67	7.17	6.50
SKT110XHW-E12	110"(16:9)	114.4	95.9	82.9	105.3	4.7	111.8	72.6	53.9	68.3	12.0	2.4	4.0	4.3	1.4	0.9	32.32	41.71	121.10	7.05	6.30
SKT110XHW-E24	110"(16:9)	114.4	95.9	82.9	105.3	4.7	111.8	84.6	53.9	80.3	24.0	2.4	4.0	4.3	1.4	0.9	33.29	42.06	121.26	7.68	6.69
SKT120XHW-E10	120"(16:9)	123.0	104.6	91.5	114.1	4.7	120.5	76.4	58.8	71.2	10.0	2.4	4.0	4.3	1.4	0.9	33.03	43.17	129.76	7.09	6.50
SKT120XHW-E20	120"(16:9)	123.0	104.6	91.5	114.1	4.7	120.5	85.4	58.8	81.2	20.0	2.4	4.0	4.3	1.4	0.9	34.92	45.02	129.92	6.69	7.09
SKT135XHW-E6	135"(16:9)	137.6	117.7	106.1	127.1	4.7	135.0	78.8	66.2	74.5	6.0	2.4	4.0	4.3	1.4	0.9	37.85	48.13	144.33	7.28	6.50
SKT100XWW-E10	100"(4:3)	96.6	80.0	65.1	89.4	4.7	94.0	76.6	60.0	72.4	10.0	2.4	4.0	4.3	1.4	0.9	29.98	38.71	102.56	6.69	6.30
SKT100XWW-E24	100"(4:3)	96.6	80.0	65.1	89.4	4.7	94.0	90.6	60.0	86.4	24.0	2.4	4.0	4.3	1.4	0.9	0.00	0.00	0.00	0.00	0.00
SKT120XWW-E9	120"(4:3)	114.4	96.0	82.9	105.4	4.7	111.8	87.6	72.0	83.4	9.0	2.4	4.0	4.3	1.4	0.9	34.04	43.30	121.85	7.09	6.54
SKT100XWW-E12	100"(16:10)	101.6	84.8	70.1	94.3	4.7	99.0	71.6	53.0	67.4	12.0	2.4	4.0	4.3	1.4	0.9	28.00	36.16	108.31	7.09	6.30
SKT100XWW-E24	100"(16:10)	101.6	84.8	70.1	94.3	4.7	99.0	83.6	53.0	79.4	24.0	2.4	4.0	4.3	1.4	0.9	29.23	37.61	108.31	6.30	5.91
SKT106XWW-E12	106"(16:10)	106.5	89.9	75.0	97.8	3.9	103.9	74.8	56.2	70.6	12.0	2.4	4.0	4.3	1.4	0.9	29.10	37.70	113.39	7.09	6.69
SKT110XWW-E10	110"(16:10)	110.0	93.3	78.5	101.1	3.9	107.5	74.9	58.3	70.7	10.0	2.4	4.0	4.3	1.4	0.9	30.78	39.51	116.73	7.28	6.69
SKT120XWW-E12	120"(16:10)	120.1	101.8	88.6	111.2	4.7	117.5	82.2	63.6	78.0	12.0	2.4	4.0	4.3	1.4	0.9	35.27	44.53	126.77	7.28	6.69
SKT100UH-E12-AUHD	100"(16:9)	103.9	87.2	72.4	96.6	4.7	101.4	67.6	49.0	63.4	12.0	2.4	4.0	4.3	1.4	0.9	28.88	37.04	113.62	8.27	7.48
SKT100UH-E24-AUHD	100"(16:9)	103.9	87.2	72.4	96.6	4.7	101.4	79.6	49.0	75.4	24.0	2.4	4.0	4.3	1.4	0.9	28.88	37.04	113.62	8.27	7.48
SKT110UH-E12-AUHD	110"(16:9)	114.4	95.9	82.9	105.3	4.7	111.8	72.6	53.9	68.3	12.0	2.4	4.0	4.3	1.4	0.9	31.53	39.88	121.10	7.48	6.69
SKT110UH-E24-AUHD	110"(16:9)	114.4	95.9	82.9	105.3	4.7	111.8	84.6	53.9	80.3	24.0	2.4	4.0	4.3	1.4	0.9	32.14	40.79	121.10	7.28	6.10
SKT120UH-E10-AUHD	120"(16:9)	123.0	104.6	91.5	114.1	4.7	120.5	75.4	58.8	71.2	10.0	2.4	4.0	4.3	1.4	0.9	35.80	47.80	130.51	7.48	6.69
SKT120UH-E20-AUHD	120"(16:9)	123.0	104.6	91.5	114.1	4.7	120.5	85.4	58.8	81.2	20.0	2.4	4.0	4.3	1.4	0.9	35.67	45.06	129.76	7.09	6.30
SKT100UH-E24-AUHD	100"(16:9)	103.9	87.2	72.4	96.6	4.7	101.4	76.6	49.0	75.4	24.0	2.4	4.0	4.3	1.4	0.9	29.15	37.88	113.79	7.20	6.61
SKT110UH-E24-AUHD	110"(16:9)	114.4	95.9	82.9	105.3	4.7	111.8	84.6	53.9	80.3	24.0	2.4	4.0	4.3	1.4	0.9	32.10	40.74	120.28	7.09	6.30

Note: Data Error be ±1"



Elite Screens - Saker Tab-Tension Series Dimension Table (Large Case)

Unit: mm																	Packing dimension					
Models	Screen Diag. & Aspect Ratio	Case L(A)	View W (A1)	ceiling bracket hole diameter (A2)	Screen W (A3)	L/R black masking (A4)	Weight Bar L (A5)	Overall H with ceiling bracket (B)	View H (B1)	Screen H (B2)	Top black masking (B3)	Bottom black masking (B4)	End cap H with ceiling bracket (C)	End cap W with ceiling bracket (C1)	End cap H with ceiling bracket (C2)	Screen Material to Wall Distance (C3)	Weight bar diameter (C3)	N.W (KGS)	G.W (KGS)	L	W	H
SKT135XHW2-E6	135° (16:9)	3487	2989	2687	3209	110	3427	2120	1681	1893	152	60	118	118	125	35	23	23.68	31.10	3632	212	200
SKT135XHW2-E12	135° (16:9)	3487	2989	2687	3209	110	3427	2120	1681	1893	152	60	118	118	125	35	23	23.48	30.58	3681	205	190
SKT135XHW2-E24	135° (16:9)	3487	2989	2687	3249	130	3427	2176	1681	2046	305	60	118	118	125	35	23	24.90	32.60	3710	210	200
SKT150XHW2-E6	150° (16:9)	3819	3321	3019	3541	110	3759	2205	1868	2080	152	60	118	118	125	35	23	26.80	32.92	4013	208	195
SKT150XHW2-E12	150° (16:9)	3819	3321	3019	3561	120	3759	2258	1868	2233	305	60	118	118	125	35	23	28.10	36.10	4040	215	200
SKT150XHW2-E24	150° (16:9)	3819	3321	3019	3591	135	3759	2263	1868	2536	610	60	118	118	125	35	23	27.32	34.46	4013	200	190
SKT165XHW2-E6	165° (16:9)	4156	3653	3356	3893	120	4096	2392	2055	2287	152	60	118	118	125	35	23	30.48	40.20	4310	210	200
SKT165XHW2-E12	165° (16:9)	4156	3653	3356	3913	130	396	2545	2055	2420	305	60	118	118	125	35	23					
SKT165XHW2-E20	165° (16:9)	4156	3653	3356	3943	145	4096	2748	2055	2623	508	60	118	118	125	35	23	29.28	37.12	4275	210	200
SKT180XHW2-E6	180° (16:9)	4483	3985	3683	4245	130	4423	2529	2242	2454	152	60	118	118	125	35	23	31.20	39.78	4677	207	192
SKT180XHW2-E12	180° (16:9)	4483	3985	3683	4275	145	4423	2732	2242	2607	305	60	118	118	125	35	23					
SKT135XVW2-E5	135° (4:3)	3271	2743	2471	2983	120	3211	2369	2057	2244	127	60	118	118	125	35	23					
SKT135XVW2-E12	135° (4:3)	3271	2743	2471	3003	130	3211	2547	2057	2422	305	60	118	118	125	35	23					
SKT135XVW2-E24	135° (4:3)	3271	2743	2471	3043	150	3211	2852	2057	2727	610	60	118	118	125	35	23					
SKT150XVW2-E6	150° (4:3)	3546	3048	2746	3318	135	3486	2623	2286	2498	152	60	118	118	125	35	23					
SKT150XVW2-E10	150° (4:3)	3546	3048	2746	3338	145	3486	2725	2286	2600	254	60	118	118	125	35	23					
SKT135XW2-E4	135° (16:10)	3406	2908	2606	3128	110	3346	2104	1817	1979	102	60	118	118	125	35	23					
SKT135XW2-E6	135° (16:10)	3406	2908	2606	3128	110	3346	2154	1817	2029	152	60	118	118	125	35	23					
SKT135XW2-E12	135° (16:10)	3406	2908	2606	3148	120	3346	2307	1817	2182	305	60	118	118	125	35	23	22.58	28.94	3545	210	200
SKT180XW2-E6	180° (16:10)	3406	2908	2606	3178	135	3346	2612	1817	2487	610	60	118	118	125	35	23	23.08	29.52	3543	205	195
SKT150XW2-E6	150° (16:10)	3729	3231	2929	3471	120	3669	2369	2019	2231	152	60	118	118	125	35	23	25.78	32.50	3848	207	195
SKT150XW2-E12	150° (16:10)	3729	3231	2929	3491	130	3669	2509	2019	2384	305	60	118	118	125	35	23					
SKT150XW2-E20	150° (16:10)	3729	3231	2929	3521	145	3669	2712	2019	2587	508	60	118	118	125	35	23	20.84	27.54	3845	205	195
SKT165XW2-E6	165° (16:10)	4086	3554	3286	3814	130	4026	2558	2221	2433	152	60	118	118	125	35	23	31.38	38.12	4177	210	190
SKT165XW2-E12	165° (16:10)	4086	3554	3286	3844	145	4026	2711	2221	2586	305	60	118	118	125	35	23					
SKT180XW2-E6	180° (16:10)	4416	3877	3616	4177	150	4386	2811	2423	2686	203	60	118	118	125	35	23	31.26	39.06	4480	205	195
SKT135UH-E12-AUHD	135° (16:9)	3487	2989	2687	3289	150	3427	2171	1681	2046	305	60	118	118	125	35	23	23.24	29.70	3681	200	190
SKT150UH-E12-AUHD	150° (16:9)	3819	3321	3019	3621	150	3759	2368	1868	2233	305	60	118	118	125	35	23	26.62	32.56	3938	200	190
SKT180UH-E3-AUHD	180° (16:9)	4483	3985	3683	4285	150	4423	2503	2242	2378	76	60	118	118	125	35	23	29.98	38.58	4677	200	190
SKT92UH5-E12	92° (16:9)	2516	2037	1716	2337	150	2456	1636	1146	1511	305	60	118	118	125	35	23	18.10	24.50	2740	210	200
SKT92XH5-E12	92° (16:9)	2516	2037	1716	2337	150	2456	1636	1146	1511	305	60	118	118	125	35	23	18.10	24.50	2740	210	200
SKT100UH5-E12	100° (16:9)	2692	2214	1892	2514	150	2632	1735	1245	1610	305	60	118	118	125	35	23	19.70	26.30	2920	210	200
SKT110UH5-E12	110° (16:9)	2933	2435	2133	2735	150	2873	1980	1370	1735	305	60	118	118	125	35	23	21.12	28.88	3127	215	195
SKT110XH5-E12	110° (16:9)	2933	2435	2133	2735	150	2873	1980	1370	1735	305	60	118	118	125	35	23	21.12	28.88	3127	215	195
SKT120UH5-E12	120° (16:9)	3155	2657	2355	2957	150	3095	1984	1494	1859	305	60	118	118	125	35	23	23.01	31.05	3394	215	195
SKT120XH5-E12	120° (16:9)	3155	2657	2355	2957	150	3095	1984	1494	1859	305	60	118	118	125	35	23	23.01	31.05	3394	215	195
SKT135UH5-E10	135° (16:9)	3487	2989	2687	3289	150	3427	2170	1681	1956	254	60	118	118	125	35	23	25.50	33.05	3710	210	200
SKT135XH5-E10	135° (16:9)	3487	2989	2687	3289	150	3427	2170	1681	1956	254	60	118	118	125	35	23	25.50	33.05	3710	210	200
SKT150XH5-E6	150° (16:9)	3819	3321	3019	3621	150	3759	2205	1868	2080	152	60	118	118	125	35	23	28.98	39.40	4013	215	200

Unit: Inch																	N.W (IBS)	G.W (IBS)	L (inch)	W (inch)	H	
SKT135XHW2-E6	135° (16:9)	137.3	117.7	105.8	126.3	4.3	134.9	79.4	66.2	74.5	6.0	2.4	4.6	4.6	4.9	1.4	0.9	0.00	0.00	0.00	0.00	0.00
SKT135XHW2-E12	135° (16:9)	137.3	117.7	105.8	126.3	4.3	134.9	83.5	66.2	78.5	10.0	2.4	4.6	4.6	4.9	1.4	0.9	52.21	68.56	142.99	8.35	7.87
SKT135XHW2-E24	135° (16:9)	137.3	117.7	105.8	127.9	5.1	134.9	95.5	66.2	96.6	24.0	2.4	4.6	4.6	4.9	1.4	0.9	51.76	67.42	144.92	8.07	7.48
SKT150XHW2-E6	150° (16:9)	150.4	130.7	118.9	139.4	4.3	148.0	86.8	73.5	81.9	6.0	2.4	4.6	4.6	4.9	1.4	0.9	56.88	72.58	157.99	8.19	7.68
SKT150XHW2-E12	150° (16:9)	150.4	130.7	118.9	140.2	4.7	148.0	92.8	73.5	87.9	12.0	2.4	4.6	4.6	4.9	1.4	0.9	61.95	79.59	159.06	8.46	7.87
SKT150XHW2-E24	150° (16:9)	150.4	130.7	118.9	141.4	5.3	148.0	104.8	73.5	99.9	24.0	2.4	4.6	4.6	4.9	1.4	0.9	60.23	76.97	157.99	7.87	7.48
SKT165XHW2-E6	165° (16:9)	163.6	143.8	132.1	153.3	4.7	161.3	94.2	80.9	89.3	6.0	2.4	4.6	4.6	4.9	1.4	0.9	67.20	86.63	169.69	8.27	7.87
SKT165XHW2-E12	165° (16:9)	163.6	143.8	132.1	154.1	5.1	161.3	100.2	80.9	95.3	12.0	2.4	4.6	4.6	4.9	1.4	0.9	0.00	0.00	0.00	0.00	0.00
SKT165XHW2-E20	165° (16:9)	163.6	143.8	132.1	155.2	5.7	161.3	108.2	80.9	103.3	20.0	2.4	4.6	4.6	4.9	1.4	0.9	64.55	81.84	168.31	8.27	7.87
SKT180XHW2-E6	180° (16:9)	176.5	156.9	145.0	167.1	5.1	174.1	101.5	88.3	96.6	6.0	2.4	4.6	4.6	4.9	1.4	0.9	68.78	87.70	184.13	8.15	7.56
SKT180XHW2-E12	180° (16:9)	176.5	156.9	145.0	168.3	5.7	174.1	107.6	88.3	102.6	12.0	2.4	4.6	4.6	4.9	1.4	0.9	0.00	0.00	0.00	0.00	0.00
SKT135XW2-E5	135° (4:3)	128.8	108.0	97.3	117.4	4.7	126.4	93.3	81.0	88.3	5.0	2.4	4.6	4.6	4.9	1.4	0.9	0.00	0.00	0.00	0.00	0.00
SKT135XW2-E12	135° (4:3)	128.8	108.0	97.3	118.2	5.1	126.4	100.3	81.0	95.4	12.0	2.4	4.6	4.6	4.9	1.4	0.9	0.00	0.00	0.00	0.00	0.00
SKT135XW2-E24	135° (4:3)	128.8	108.0	97.3	119.8	5.9	126.4	112.3	81.0	107.4	24.0	2.4	4.6	4.6	4.9	1.4	0.9	0.00	0.00	0.00	0.00	0.00
SKT150XW2-E6	150° (4:3)	139.6	120.0	108.1	131.4	5.7	137.2	103.3	90.0	102.4	10.0	2.4	4.6	4.6	4.9	1.4	0.9	0.00	0.00	0.00	0.00	0.00
SKT135XW2-E4	135° (16:10)	134.1	114.5	102.6	123.1	4.3	131.7	82.8	71.5	77.9	4.0	2.4	4.6	4.6	4.9	1.4	0.9	0.00	0.00	0.00	0.00	0.00
SKT135XW2-E6	135° (16:10)	134.1	114.5	102.6	123.1	4.3	131.7	84.8	71.5	79.9	6.0	2.4	4.6	4.6	4.9	1.4	0.9	0.00	0.00	0.00	0.00	0.00
SKT135XW2-E12	135° (16:10)	134.1	114.5	102.6	123.9	4.7	13															