

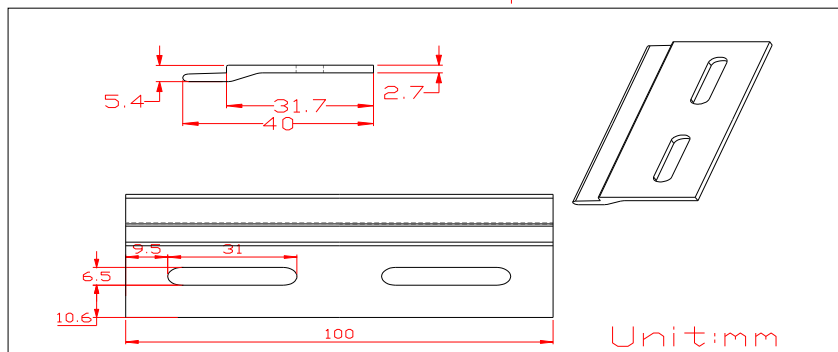
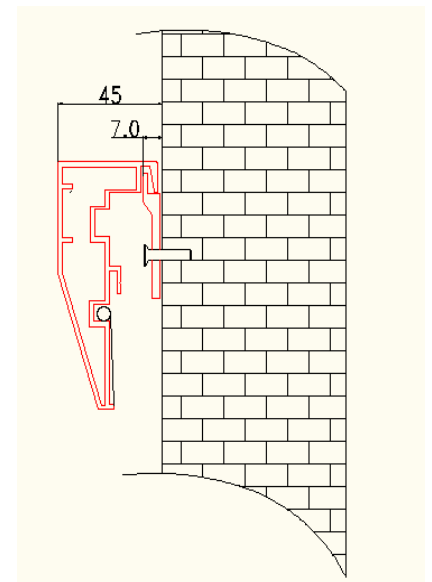
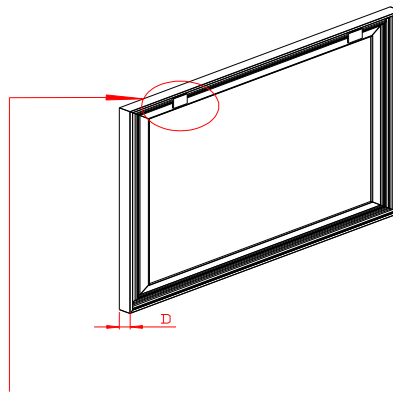
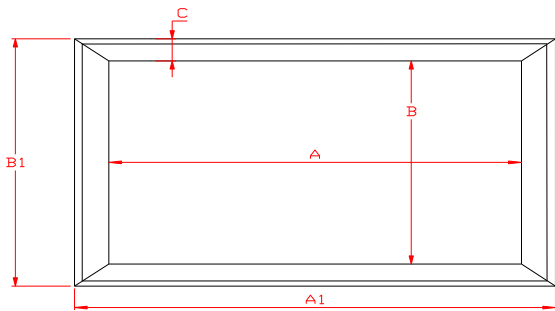
Sable Frame Series Dimensions Table

Unit: mm

Model Number	Nominal Diagonal & Aspect Ratio	Overall Width (A1)	Viewing Width (A)	Overall Height (B1)	Viewing Height (B)	Frame Width (C)	Frame Depth (D)
ER92WH1	92" (16:9)	2157	2037	1265	1145	60	40
ER100-WH1, -A1080P2, -A1080P3, GH1, DHD3	100" (16:9)	2334	2214	1365	1245	60	40
ER106WH1	106" (16:9)	2467	2347	1440	1320	60	40
ER110WH1	110" (16:9)	2555	2435	1490	1370	60	40
ER110DHD3	110" (16:9)	2555	2435	1490	1370	60	40
ER120-WH1, -A1080P2, -A1080P3, GH1, DHD3	120" (16:9)	2777	2657	1614	1494	60	40
ER135WH1	135" (16:9)	3110	2990	1800	1680	60	40
ER135DHD3	135" (16:9)	3110	2990	1800	1680	60	40
ER150WH1	150" (16:9)	3440	3320	1990	1870	60	40
ER150DHD3	150" (16:9)	3440	3320	1990	1870	60	40
ER180WH1	180" (16:9)	4105	3985	2360	2240	60	40
ER180GH1	180" (16:9)	4105	3985	2360	2240	60	40
ER200WH1	200" (16:9)	4550	4430	2610	2490	60	40
ER109WX1	109" (16:10)	2456	2336	1579	1460	60	40
ER114WX1	114" (16:10)	2557	2438	1643	1524	60	40
ER85WH1-Wide	85"(2.35:1)	2106	1986	965	845	60	40
ER85H1-Wide	85"(2.35:1)	2106	1986	965	845	60	40
ER85WH1-A1080P2	85"(2.35:1)	2106	1986	965	845	60	40
ER96WH1-Wide	96"(2.35:1)	2364	2244	1075	955	60	40
ER96H1-Wide	96"(2.35:1)	2364	2244	1075	955	60	40
ER96WH1-A1080P2	96"(2.35:1)	2364	2244	1075	955	60	40
ER96WH1W-A1080P3	96"(2.35:1)	2364	2244	1075	955	60	40
ER103WH1-Wide	103"(2.35:1)	2527	2407	1144	1024	60	40
ER103H1-Wide	103"(2.35:1)	2527	2407	1144	1024	60	40
ER103WH1-A1080P2	103"(2.35:1)	2527	2407	1144	1024	60	40
ER115WH1-Wide	115"(2.35:1)	2808	2688	1264	1144	60	40
ER115WH1-A1080P2	115"(2.35:1)	2808	2688	1264	1144	60	40
ER115WH1W-A1080P3	115"(2.35:1)	2808	2688	1264	1144	60	40
ER125WH1-Wide	125"(2.35:1)	3041	2921	1363	1243	60	40
ER125WH1-A1080P2	125"(2.35:1)	3041	2921	1363	1243	60	40
ER125WH1W-A1080P3	125"(2.35:1)	3041	2921	1363	1243	60	40
ER138H1-Wide	138"(2.35:1)	3345	3225	1492	1372	60	40
ER138WH1-Wide	138"(2.35:1)	3345	3225	1492	1372	60	40
ER138WH1-A1080P2	138"(2.35:1)	3345	3225	1492	1372	60	40
ER138WH1W-A1080P3	138"(2.35:1)	3345	3225	1492	1372	60	40
ER158WH1-Wide	158"(2.35:1)	3813	3693	1691	1571	60	40
ER158WH1-A1080P2	158"(2.35:1)	3813	3693	1691	1571	60	40
ER166WH1-Wide	166"(2.35:1)	4000	3880	1771	1651	60	40
ER166WH1-A1080P2	166"(2.35:1)	4000	3880	1771	1651	60	40
ER176WH1-Wide	176"(2.35:1)	4233	4113	1870	1750	60	40
ER176WH1-A1080P2	176"(2.35:1)	4233	4113	1870	1750	60	40

The listed measurements are for general reference only. Please contact Elite Screens to verify product design and dimensions before attempting to integrate its products with any structural or furniture modification. Although a manufacturer may offer product advice, it may be taken or disregarded at the integrator's discretion. Elite Screens will not be held responsible or be otherwise liable for faulty installations.

Note: Data Error ±1", *Denotes a Discontinued Item, stock may be limited or unavailable.



Sable Frame Series

Rahmenleinwand

Gebrauchsanweisung

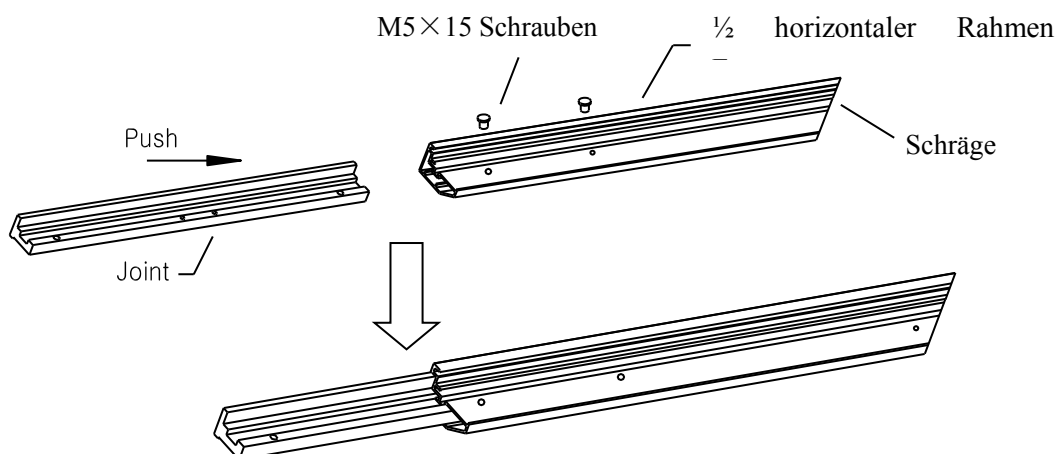
Teileliste

1. Rahmenteile	x 6	(4 x oben & unten + 2 x Seiten)
2. Spannschäfte	x 6	(4 x oben & unten + 2 x Seiten)
3. Leinwandtuch	x 1	
4. Verbindungsstück Mitte	x 2	
5. Verbindungsstück Ecken	x 4	
6. Wandhalter	x 2 – 3	(je nach Modell)
7. M5x50 Schrauben	x 6	
8. Dübel	x 6	
9. M5x15 Schrauben	x 16	
10. Stützstrebe	x 1 – 2	(je nach Modell)
11. Adapter Stützstrebe	x 2 – 4	(je nach Modell)
12. Klemmen	x 60 – 180	(je nach Modell)

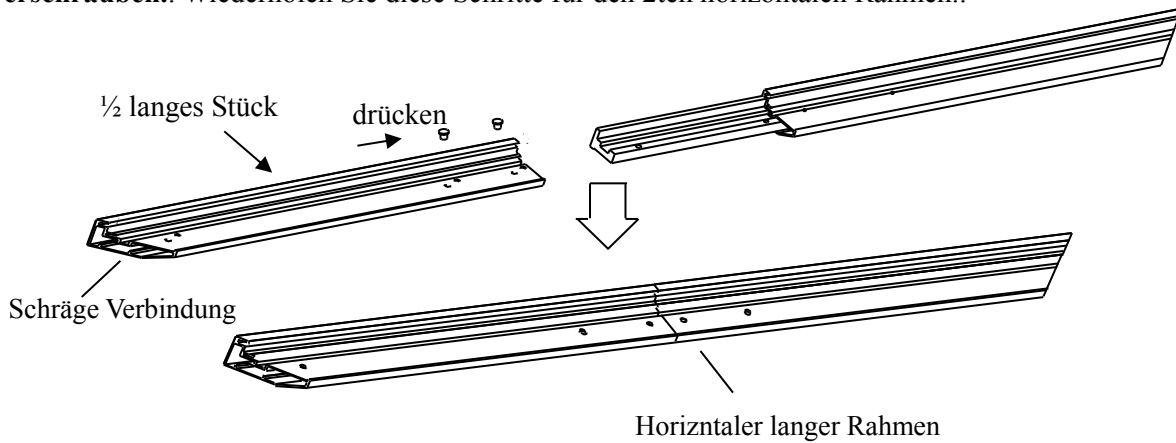
Stellen Sie sicher, dass alle Teile vorhanden sind, bevor Sie mit dem Zusammenbau beginnen.

Zusammenbau

1. Verbindungsstück Mitte in einen 1/2 horizontalen Rahmen einführen und mit 2 **M5x15 verschrauben**

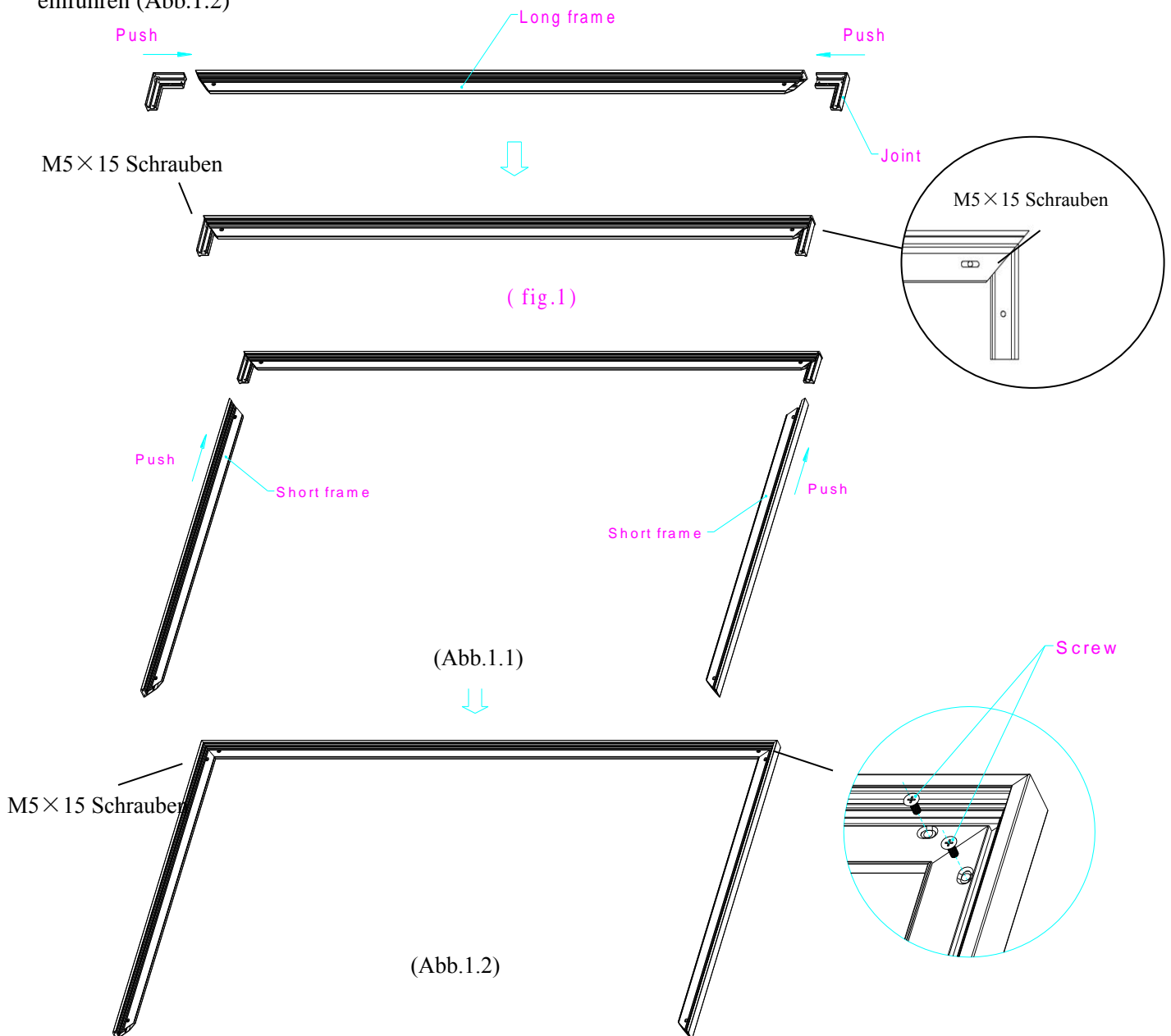


2. Die andere Hälfte des horizontalen Rahmens mit dem Verbindungsstück Mitte verbinden und mit 2 **M5x15 verschrauben**.. Wiederholen Sie diese Schritte für den 2ten horizontalen Rahmen..

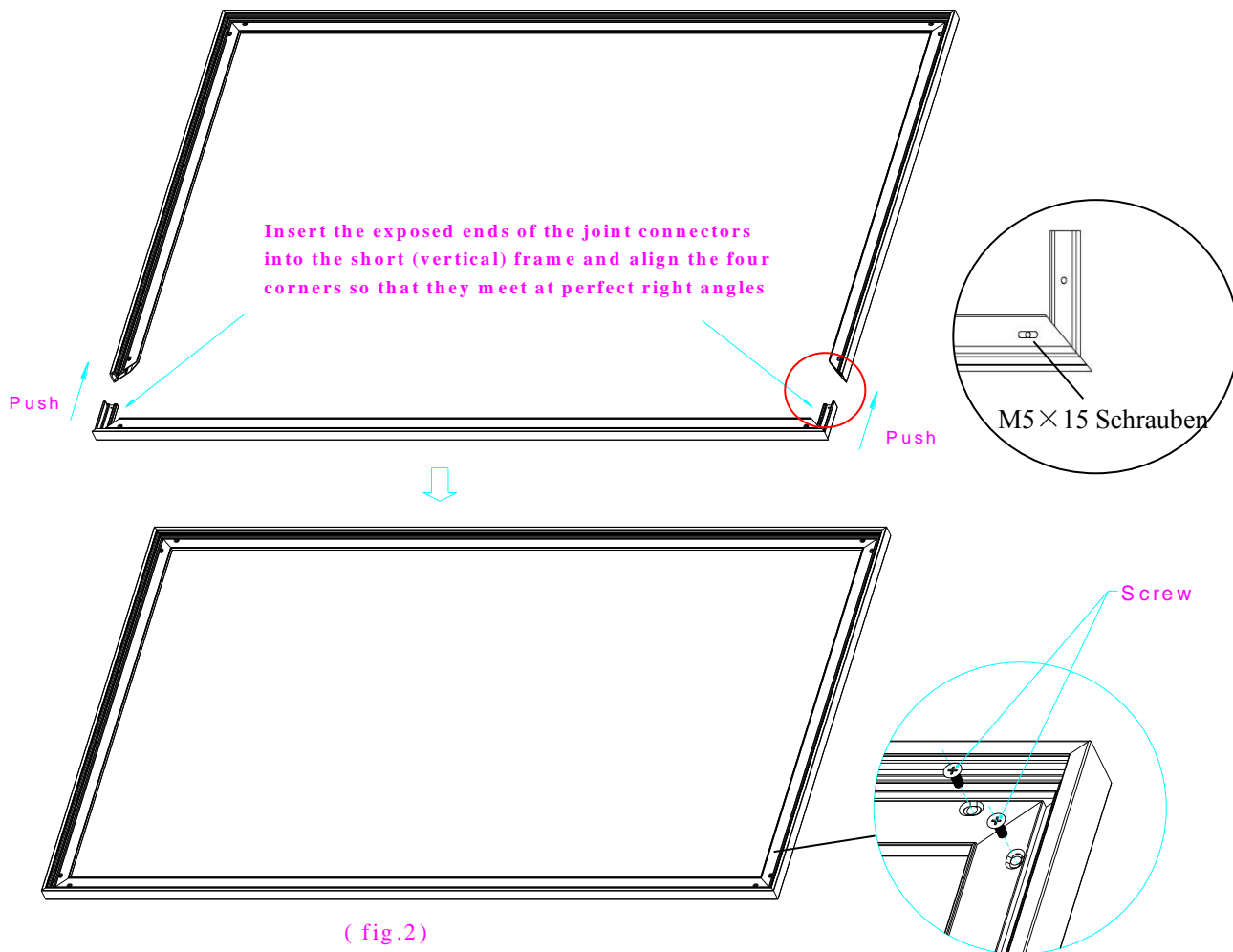


Ziehen Sie die Schrauben noch nicht fest an.

3. Verbindungsstück Ecke einführen und mit 2 **M5x15 verschrauben**. (see Abb.1). Dann die vertikalen Rahmenteile einführen (Abb.1.2)



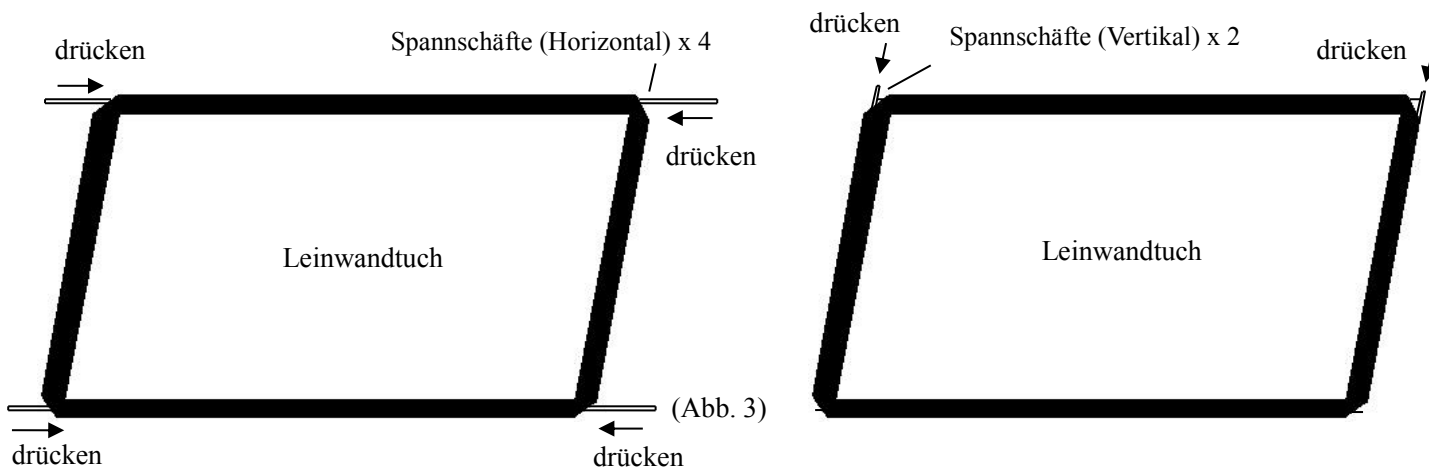
4. Alle Teile zusammenstecken (Abb.2)



Leinwandtuch befestigen

1. Das Tuch auf einer sauberen Fläche entrollen. Die Spannschäfte von allen 4 Ecken einführen (Abb.3)

- _____ Spannschäfte (Vertikal) x 2
- _____ Spannschäfte (Horizontal) x 4



2. Legen Sie den Rahmen und das Tuch mit der Vorderseite auf eine saubere Oberfläche.

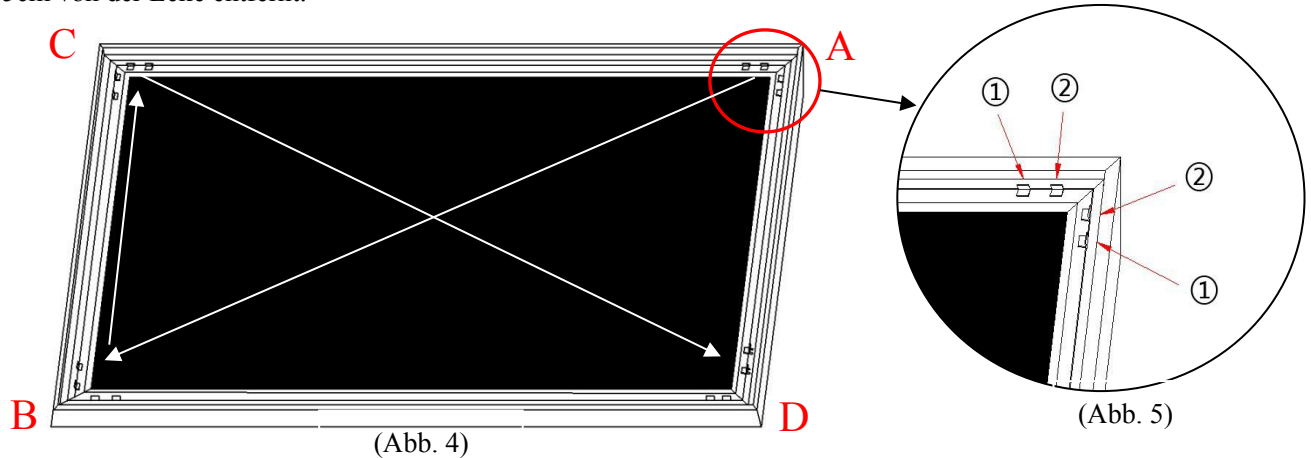
3. Das Tuch mittig ausrichten.

Das Tuch ist etwas kleiner als der Rahmen, damit es ordentlich gespannt werden kann.

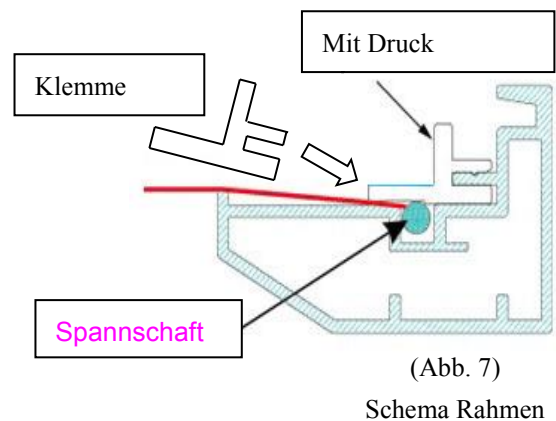
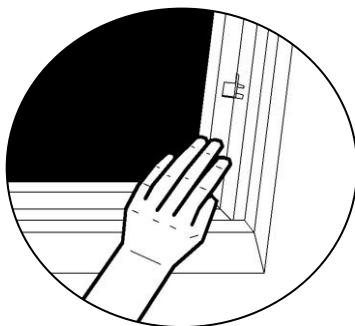
4. Die Klemmen befestigen

(1) Fangen Sie an den Enden an **A**→**B**→**C**→**D** (Abb.4)

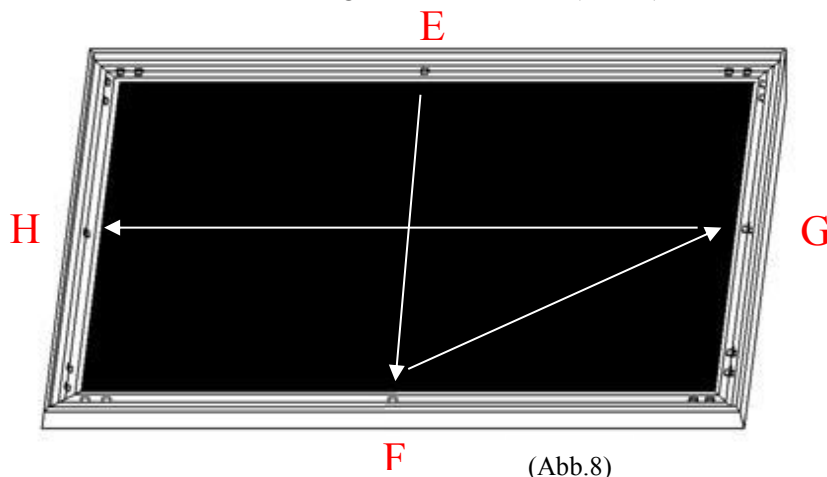
(2) Fangen Sie wie unter Abb. 5 gezeigt an. Klemme ① ist ca. 10cm von der Ecke entfernt. Klemme ② ist ca. 5cm von der Ecke entfernt.

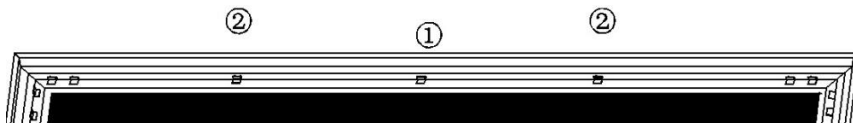


(3) Spannen Sie das Material zu den Seiten hin.
Drücken Sie die Klemmen rein (Abb.6-Abb.7).



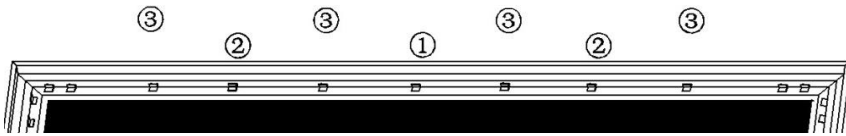
(4) Jetzt in der Mitte Klemmen anbringen **E**→**F**→**G**→**H**. (Abb.8)





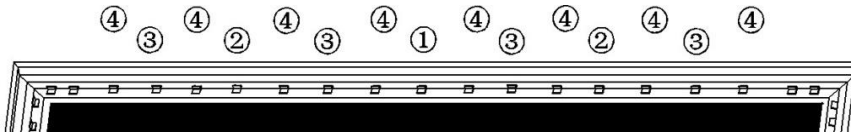
(Abb.9)

(5) die nächsten Klemmen in der Mitte (2) zwischen Andweren (1) anbringen. (Abb.9)



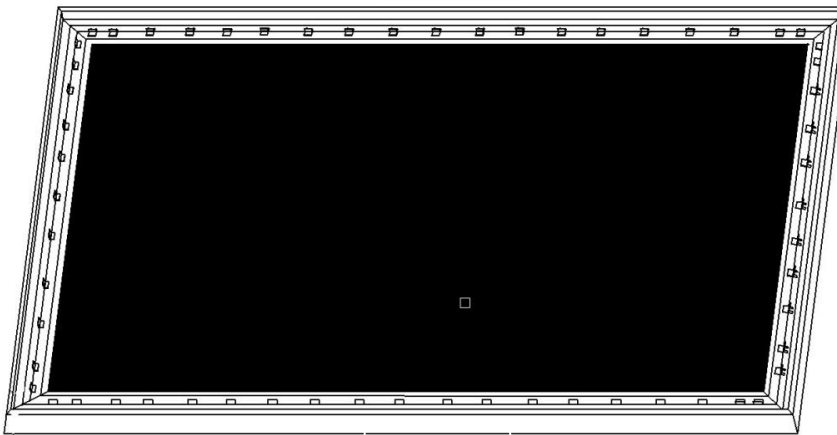
(Abb.10)

(6) weiter mittig fortfahren (3) zwischen (1) und (2) und der Ecke. (Abb.10)



(Abb.11)

(7) weiter so fortfahren (4) Abb.11



(Abb.12)

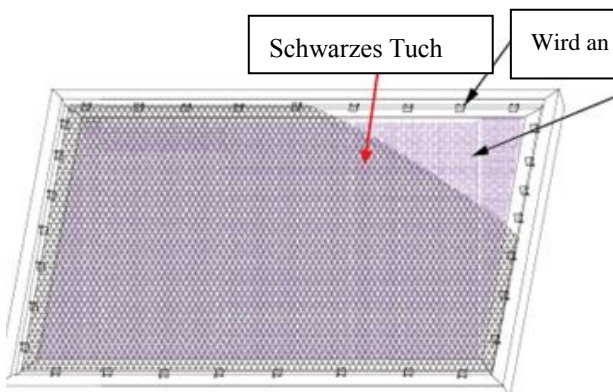
(8) Die restlichen Klemmen aufbrauchen biss alles gut verspannt ist (Abb.12)

Schwarzes Tuch für die Rückseite nur ! bei Akustik Tüchern

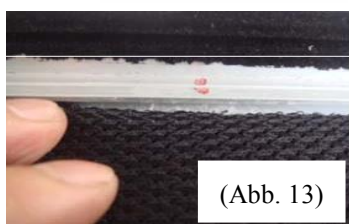
Nur für AcousticPro Modelle.

Um Reflexionen von der rückseitigen Wand zu vermeiden.

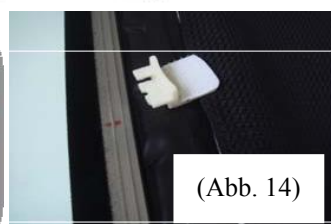
Das schwarze Tuch wird an den Klettverschlüssen leicht befestigt.



Die Klettverschlüsse bei den Markierungen anbringen (Abb. 13). einstecken (Fig 14). Und das schwarze Tuch auf die Kletten drücken (Abb. 15 & 16)



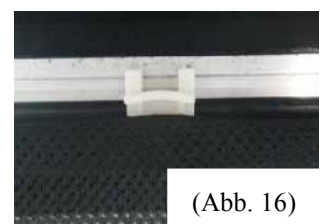
(Abb. 13)



(Abb. 14)



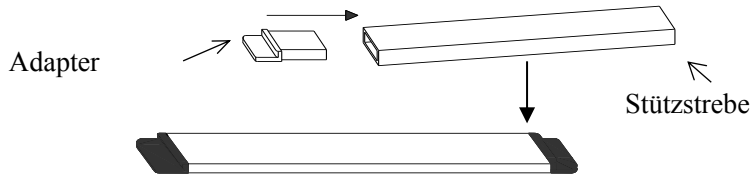
(Abb. 15)



(Abb. 16)

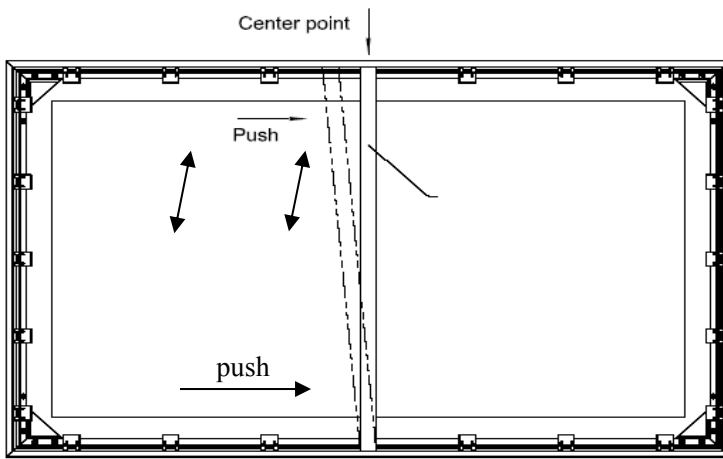
Stützstrebe

1. Den Adapter für die Stützstreben einschieben.

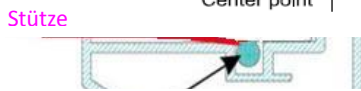


2. Die Stützstrebe ca. mittig in den Rahmen stecken.
(Abb. 17 und Abb. 18).

Modelle bis inkl. 135" : 1 Stützstrebe

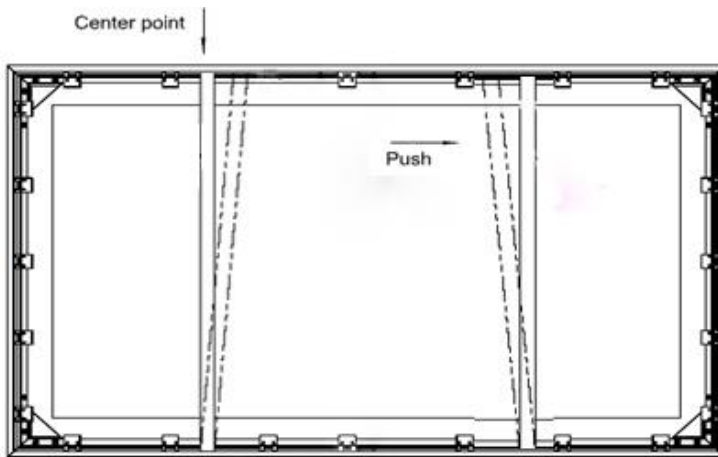


(fig.7)



Bei Modellen ab 135" werden 2 Stützen benötigt

Support Rod



(Abb.

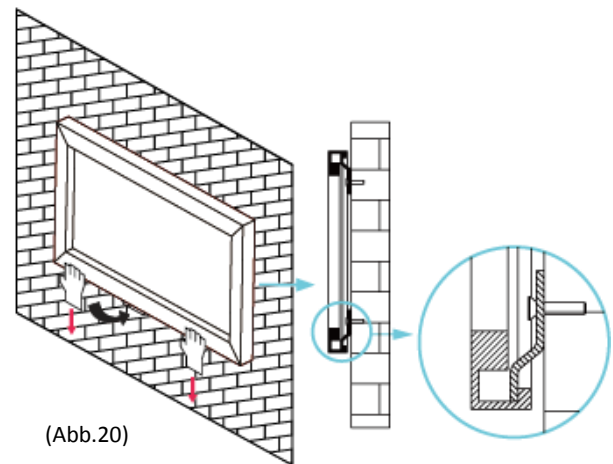
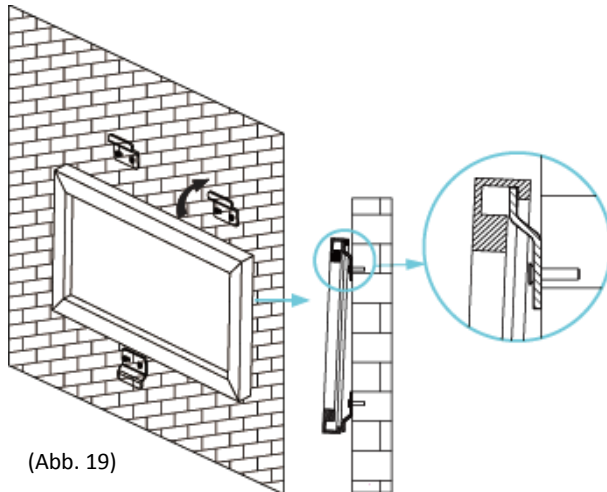
3. In gleichem Abstand einführen.

Installation

1. Suchen Sie sich eine geeignete Position an der Wand aus, und markieren Sie die Stelle für die Halter.
2. Bohren Sie entsprechende Löcher.
3. Befestigen Sie die Halterungen.

2 Halterungen oben für Modelle bis 135" und 3 Halterungen oben bei Größen über 135".

4. Positionieren Sie den Rahmen oben auf den Halterungen (**Abb. 19**) und drücken Sie nach unten bis die Halter gut sitzen.
5. Die können den Rahmen auf den Halterungen nach links und rechts bewegen..
6. Benutzen Sie beide Hände um den Rahmen final in die untere Halterung zu drücken. **Fig 20**.



Weitere Informationen finden Sie auf:

www.elitescreens.com



Screen Material Maintenance Care General Cleaning Instructions

Care & Use

Proper care and use will maximize the life of the material and bring you years of enjoyment.

Care for the following materials:

AcousticPro 1080P2, AcousticPro 1080P3, AcousticPro UHD, CineWhite®, CineWhite® A8K, CineWhite® UHD, CineWhite® UHD-B, CineWhite® X, CineWhite ISF, CineGrey, MaxWhite®, MaxWhite® B, MaxWhite® 2, MaxWhite® FG, Spectra White FG, SilkWhite, SilkWhite 2, StarBright 9™, VersaWhite, WraithVeil®, WraithVeil® and WraithVeil® Dual

1. Materials needed: 2 Lint-Free white cloths, Mild Soap (hand soap is suitable) and Water.
2. Take the Lint-Free cloth and submerge it in warm water for cleaning light dust and dirt. For stubborn stains or a sticky surface, a solution of mild dishwashing liquid diluted with warm water should be used.
3. Completely ring out cloth so it is lightly dampened, not drenched.
4. Using the damp cloth, lightly wipe in an up and down motion starting at the left of the screen moving to the right of the screen. **DO NOT WIPE IN CIRCULAR MOTION.**
5. Once you have completed wiping the entire screen with a dampened Lint-Free cloth, use the dry Lint-Free cloth to wipe off any excess water from the screen.

****If heavily soiled (marked permanently): You may use alcohol with a Q-Tip to clean.**

1. Dip one side of the Q-Tip in Alcohol
2. Gently wipe marked spot ONLY.
3. Use dry side of Q-Tip to go over mark to dry it.
4. You may wipe over with dry Lint-Free Cloth to finish.

Care for the following materials:

CineGrey 3D®, CineGrey 3D® AT, CineGrey 4D, CineGrey 5D®, PowerGain and AirBright 3D2

1. Materials needed: 2 Microfiber cloths and water.
2. Gently blot the area using a lightly dampened lint-free microfiber cloth with clear warm water. **DO NOT** rub.
3. Using the damp cloth, lightly wipe in an up and down motion starting at the left of the screen moving to the right of the screen. **DO NOT WIPE IN CIRCULAR MOTION.**
4. To clean a stubborn stain or a sticky surface, spray a solution of equal parts Formula 409 and warm water onto a lint-free microfiber cloth. **DO NOT SPRAY THE SCREEN MATERIAL DIRECTLY.**

NEVER ALLOW ANY SOLVENTS TO DRY ON THE MATERIALS AS THEY WILL CREATE A STAIN THAT IS NON-REMOVABLE.

****If Heavily soiled (marked permanently): Unfortunately you may NOT use any solution to clean the surface as it will damage the screen. If there is a mark, it is permanent.**

- You can **NOT** repair a screen if it is torn.

Ceiling Ambient Light Rejection Screen Fabric Maintenance:

StarBright CLR® and CLR® 3

Dust, dirt and scratches on the projection screen surface will affect the quality and performance of the projection image. Follow the instructions below to properly maintain the screen.

1. The screen surface has a horizontal linear structure. **DO NOT** wipe the screen up and down or in a circular motion.

Wipe gently from left to right only.

2. Clean the dust on the screen surface with a soft brush or microfiber cloth. A rough/coarse towel or cloth may damage the screen's surface.

3. Gently wipe the screen with a lightly moistened white lint free cloth with water or with a neutral detergent (1mL/0.33 oz) mixed with water (1000 mL/33.8 oz).

Notes: The following precautions should always be followed to avoid damaging the material, which is not covered under warranty.

- Don't touch the screen material to avoid leaving fingerprints.
- Use gloves when handling the material.
- Don't scratch the material, as it will leave permanent markings on the screen's surface.
- Don't point to the screen material with a fingertip or other sharp objects to prevent damage to the material.
- Don't use acetone, benzene, alcohol and any other organic solvents to clean the screen material. Using such chemicals will permanently damage the screen.

Ceiling Ambient Light Rejection Screen Fabric Maintenance:

CLR® 2 Material

Dust, dirt and scratches on the projection screen surface will affect the quality and performance of the projection image. Follow the instructions below to properly maintain the screen.

1. The screen surface has a horizontal linear structure. **DO NOT** wipe the screen up and down or in a circular motion.

Wipe gently from left to right only.

2. Clean the dust on the screen surface with a soft brush or microfiber cloth.

3. Gently wipe the screen with a lightly moistened white lint free cloth with mild soap and water to remove any dirt or debris.

Notes: The following precautions should always be followed to avoid damaging the material, which is not covered under warranty.

- Don't point to the screen material with sharp objects to prevent damage to the material.
- Don't use acetone, benzene, alcohol and any other organic solvents to clean the screen material. Using such chemicals will permanently damage the screen.

For a local Elite Screens contact or Technical Support, Please visit

www.elitescreens.com



Elite's **CineWhite®** (Tension Matte White) has broad light dispersion through diffusion uniformity, black & white contrast and true color rendition making it the most versatile in Elite's tensions screen product lines. This tension PVC surface is the best choice for today's high-contrast ratio projectors in commercial or residential presentations. The **CineWhite®** material equals the performance to our MaxWhite® product, but improves the experience with the superior surface flatness. Uniform diffusion surface has black-backing to eliminate light penetration and is easily washable with mild soap and water.

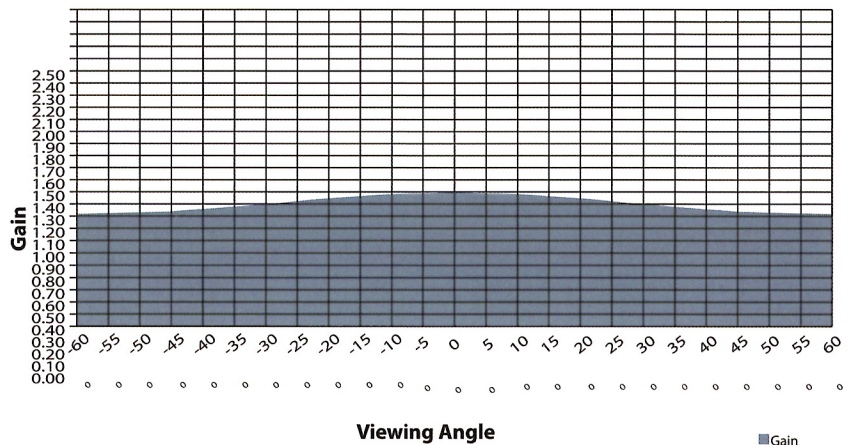
Elite Screen series:
Sable Frame, Lunette, Yard Master 2
ezFrame, Evanesce Tab-Tension B, Aeon



On axis 0° Gain: 1.1
Viewing Cone: 180°

Features

- Multi-layer PVC (Polyvinyl Chloride) with texture and surface coating
- CineWhite® material has a Gain of 1.1
- Active 3D, 4K Ultra HD and HDR ready
- Surface can be cleaned with (water) moist cotton cloth
- Viewing Angle: 180° (90° +/- LR)
- Full Lambertian Diffuser - no half gain drop
- Mildew resistant
- Produces exceptional picture quality for any presentation
- Compatible with Ultra/Short and Standard throw projectors



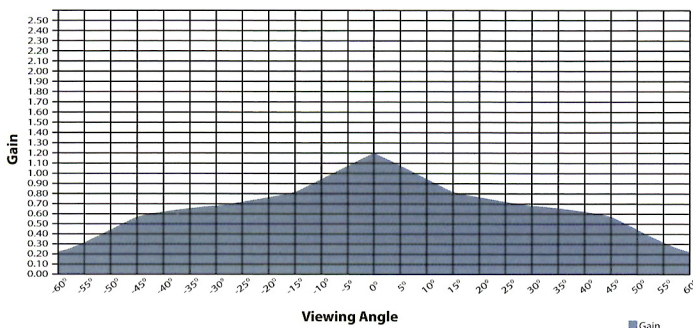


(Shown here on Aeon EDGE FREE® Screen)

The **CineGrey 3D®** is a reference quality front projection screen material formulated for environments with minimal control over room lighting. It was designed to enhance picture brightness, offer accurate color fidelity, and improve contrast levels. The **CineGrey 3D®** is best for family rooms, educational facilities, conference rooms or any applications in which incident light is a factor. Typical matte white surfaces wash out the images when ambient light cannot be controlled. The **CineGrey 3D®** is the best choice for having a projected image with a balanced color temperature and contrast under such conditions. It provides flat spectral response for an accurate color balance in dark room environments as well for reference quality applications. **The CineGrey 3D®** is ready for the next-generation of high-performance video.



On axis 0° Gain: 1.2
Viewing Cone: 45°



**Elite Screens Series:
SableFrame, Aeon EDGE FREE® Fixed Frame**

- Gain: 1.2; Viewing Angle: 90° (45° L/R)
- ISF Certified for accurate color points, color temperature and dynamic range
- Angular-Reflective front projection material with ambient light rejecting technology
- Contrast enhancement over standard matte white surface
- 4K Ultra HD, Active 3D, and HDR Ready
- Polarized for Passive 3D applications
- Capable of improving brightness, color, and contrast under ambient light conditions
- Mildew resistant, screen surface can be cleaned with a microfiber cloth and water
- Accurate color representation – Flat Spectral Response