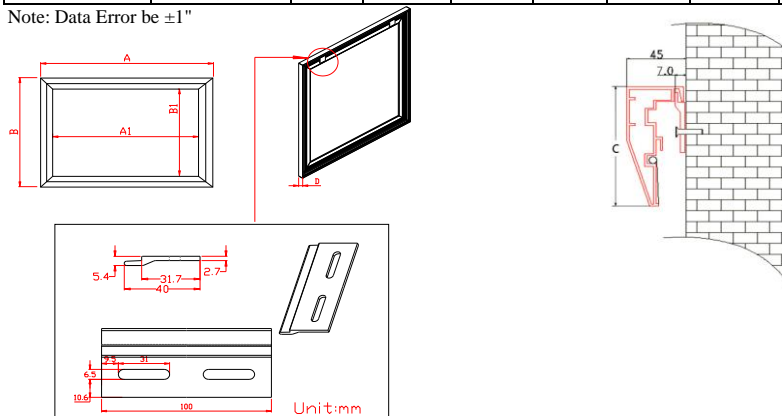


### Elite Screens - ezFrame Series Dimension Table

Unit: mm

Model	Screen Diag. & Aspec Ratio	Case L (A)	View W (A1)	Case H (B)	View H (B1)	Frame W (C)	Frame H (D)	N.W (KGS)
R84WH1,-DHD5	84" (16:9)	1980	1860	1166	1046	60	40	10,40
R92WH1,-DHD5	92" (16:9)	2157	2037	1266	1146	60	40	11,00
R100WH1,-DHD5	100"(16:9)	2334	2214	1365	1245	60	40	11,70
R106WH1	106"(16:9)	2467	2347	1440	1320	60	40	12,60
R110WH1,-DHD5	110"(16:9)	2555	2435	1490	1370	60	40	10,10
R120WH1,-DHD5	120"(16:9)	2777	2657	1614	1494	60	40	13,80
R135WH1,-DHD5	135"(16:9)	3110	2990	1800	1680	60	40	16,50
R150WH1,-DHD5	150"(16:9)	3440	3320	1990	1870	60	40	18,27
R165WH1,-DHD5	165"(16:9)	3773	3653	2175	2055	60	40	14,00
R180WH1,-DHD5	180"(16:9)	4105	3985	2362	2242	60	40	21,30
R200WH1, DHD5	200"(16:9)	4550	4430	2610	2490	60	40	23,26
R84WV1	84" (4:3)	1827	1707	1400	1280	60	40	10,60
R100WV1	100"(4:3)	2152	2032	1644	1524	60	40	12,70
R120WV1	120"(4:3)	2560	2440	1950	1830	60	40	15,30
R135WV1	135"(4:3)	2860	2740	2180	2060	60	40	14,32
R150WV1	150"(4:3)	3170	3050	2410	2290	60	40	20,76
R180WV1	180"(4:3)	3778	3658	2863	2743	60	40	22,25
R200WV1	200"(4:3)	4184	4064	3168	3048	60	40	23,00
R85WH1-Wide	85" (2.35:1)	2106	1986	965	845	60	40	9,08
R96WH1-Wide	96" (2.35:1)	2364	2244	1075	955	60	40	10,00
R103WH1-Wide	103"(2.35:1)	2527	2407	1144	1024	60	40	11,22
R115WH1-Wide	115"(2.35:1)	2808	2688	1264	1144	60	40	12,00
R125WH1-Wide	125"(2.35:1)	3041	2921	1365	1245	60	40	13,00
R138WH1-Wide	138"(2.35:1)	3345	3225	1490	1370	60	40	14,48
R158WH1-Wide	158"(2.35:1)	3813	3693	1691	1571	60	40	11,80
R166WH1-Wide	166"(2.35:1)	4000	3880	1771	1651	60	40	19,30
R109WX1	109"(16:10)	2468	2348	1587	1467	60	40	14,80
R128WX1	128"(16:10)	2877	2757	1843	1723	60	40	14,10
R142WX1	142"(16:10)	3221	3101	2059	1939	60	40	19,20
R155WX1	155"(16:10)	3459	3339	2207	2087	60	40	17,60
Unit: Inch	Screen Diag. & Aspec Ratio	Case L (A)	View W (A1)	Case H (B)	View H (B1)	Frame W (C)	Frame H (D)	N.W (lbS)
R84WH1,-DHD5	84" (16:9)	78,0	73,2	45,9	41,2	2,4	1,6	22,93
R92WH1,-DHD5	92" (16:9)	84,9	80,2	49,8	45,1	2,4	1,6	24,25
R100WH1,-DHD5	100"(16:9)	91,9	87,2	53,7	49,0	2,4	1,6	25,79
R106WH1	106"(16:9)	97,1	92,4	56,7	52,0	2,4	1,6	27,78
R110WH1,-DHD5	110"(16:9)	100,6	95,9	58,7	53,9	2,4	1,6	22,27
R120WH1,-DHD5	120"(16:9)	109,3	104,6	63,5	58,8	2,4	1,6	30,42
R135WH1,-DHD5	135"(16:9)	122,4	117,7	70,9	66,1	2,4	1,6	36,38
R150WH1,-DHD5	150"(16:9)	135,4	130,7	78,3	73,6	2,4	1,6	40,28
R165WH1,-DHD5	165"(16:9)	148,5	143,8	85,6	80,9	2,4	1,6	30,86
R180WH1,-DHD5	180"(16:9)	161,6	156,9	93,0	88,3	2,4	1,6	46,96
R200WH1, DHD5	200"(16:9)	179,1	174,4	102,8	98,0	2,4	1,6	51,28
R84WV1	84" (4:3)	71,9	67,2	55,1	50,4	2,4	1,6	23,37
R100WV1	100"(4:3)	84,7	80,0	64,7	60,0	2,4	1,6	28,00
R120WV1	120"(4:3)	100,8	96,1	76,8	72,0	2,4	1,6	33,73
R135WV1	135"(4:3)	112,6	107,9	85,8	81,1	2,4	1,6	31,57
R150WV1	150"(4:3)	124,8	120,1	94,9	90,2	2,4	1,6	45,77
R180WV1	180"(4:3)	148,7	144,0	112,7	108,0	2,4	1,6	49,05
R200WV1	200"(4:3)	164,7	160,0	124,7	120,0	2,4	1,6	50,71
R85WH1-Wide	85" (2.35:1)	82,9	78,2	38,0	33,3	2,4	1,6	20,02
R96WH1-Wide	96" (2.35:1)	93,1	88,3	42,3	37,6	2,4	1,6	22,05
R103WH1-Wide	103"(2.35:1)	99,5	94,8	45,0	40,3	2,4	1,6	24,74
R115WH1-Wide	115"(2.35:1)	110,6	105,8	49,8	45,0	2,4	1,6	26,46
R125WH1-Wide	125"(2.35:1)	119,7	115,0	53,7	49,0	2,4	1,6	28,66
R138WH1-Wide	138"(2.35:1)	131,7	127,0	58,7	53,9	2,4	1,6	31,92
R158WH1-Wide	158"(2.35:1)	150,1	145,4	66,6	61,9	2,4	1,6	26,01
R166WH1-Wide	166"(2.35:1)	157,5	152,8	69,7	65,0	2,4	1,6	42,55
R109WX1	109"(16:10)	97,2	92,4	62,5	57,8	2,4	1,6	32,63
R128WX1	128"(16:10)	113,3	108,5	72,6	67,8	2,4	1,6	31,09
R142WX1	142"(16:10)	126,8	122,1	81,1	76,3	2,4	1,6	42,33
R155WX1	155"(16:10)	136,2	131,5	86,9	82,2	2,4	1,6	38,80

Note: Data Error be ±1"





## 2017 ezFrame Series Product Brochure

The ezFrame series offers several screen materials models



# ezFrame Series

The ezFrame series offers several screen materials models

Scan for product



video



Award winning Home Theater Screen with full tension uniformity

## Screen Material:

- Active 3D and 4K Ultra HD Ready on Cinewhite™, CineGrey, and AcousticPro A1080P3 materials
- Award winning Home Theater Screen with full tension uniformity
- Available in the following range of diagonal sizes:
  - 84" - 180" in 4:3 format
  - 84" - 200" in 16:9 format

## Design and Installation:

- Anodized black aluminum frame with black velour surfacing to enhance the appearance with the stylish masked border that absorbs projector light overshoot
- Easy to assemble and install in minutes
- Sliding wall mounts ensure the installation is properly centered

## Quality and Reliability:

- 2-year Parts & Labor manufacturer's warranty
- 3-year warranty offered through ENR-G program (Education, Non-Profit, Religious and Government)

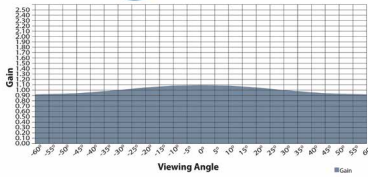


Choose from CineWhite™, CineGrey, and AcousticPro1080P3.





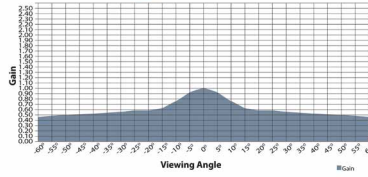
On axis 0° Gain: 1.1  
Viewing Cone: 180°



**CineWhite™** Tension Screen Material has a wide viewing Angle in 1.1 Gain, suitable for most applications including commercial and home theater presentations.



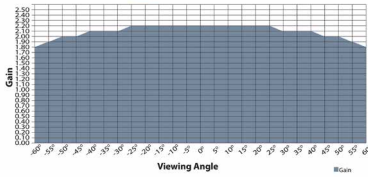
On axis 0° Gain: 1.0  
Viewing Cone: 160°



**CineGrey** Tension Screen Material is best for those using low contrast ratio (LCD) projectors in a home theater environment and need to improve picture black levels.



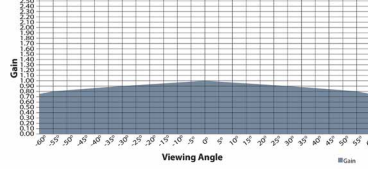
On axis 0° Gain: 2.2  
Viewing Cone: 160°



**WraithVeil Elite's** rear projection screen material comes in 2.2 high gain to be used in ambient light environments, such as tradeshow, meeting rooms, and outside evening presentations. Its special surface coating enhances color reproduction and black level reproduction with wide diffusion for multiple applications.



On axis 0° Gain: 1.0  
Viewing Cone: 180°

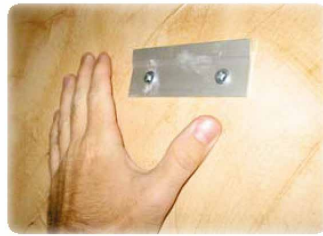


**AcousticPro1080P3** is an acoustically transparent front projection material. The angular weave eliminates the moire effect while presenting warm neutral colors for today's high definition 1080P (1920x1080) projectors. This material allows speaker placement behind while allowing an exceptional acoustically transparent performance.



Easily attached Frame Tension System, allows perfect tension uniformity with a simple procedure. Standard Black Backed Screen Material prevents light penetration for superior color reproduction.

(Not available on all material)



The aluminum Sliding Wall Brackets provide the installer with a simple solution to screen installation and adjustable horizontal centering.



Standard 2.36" Black Velvet Surfaced Frame enhances the perceived brightness of the projection image with superior contrast and color reproduction for sharper picture quality. Wide-Borders also absorb light overshoot to professionally matte your presentation.



"I found that it had a decent reflectivity to it, but didn't suffer too much from hot spotting (which obviously you would expect from a lower gain screen), nor did it have any sparkles or other anomalies to it. Elite certainly has a good idea here. Good performance, good build quality, and good features in a screen, for a lower price point."

AV Science, NY

By comparison, the Firehawk® screen tends to reject ambient light from the side, a little better than the ezFrame by Elite. (All's fair - an equivalent Firehawk fixed wall projector screen is much over but yellows did appear just a touch stronger than on the Firehawk®. This was very close and not an issue. Overall color was very good. With a 100" 16:9 Elite ezFrame screen selling for about half of a Da-Lite Cinema Contour with ProTrim (their fancy velourish border), and barely a 1/3 of a Stewart Luxus Deluxe, it allows home theater people to own an attractive looking fixed wall screen, with good performance, at a price that simply isn't available from the larger established brands.

Art Feierman / Projectorreviews.com

## ezFrame Series

Model	Screen Diag. & Aspect Ratio	View Height-Chord (in)	View Width-Chord (in)	View Height (cm)	View Width (cm)	N.W. (lbs.)	G.W. (lbs.)	N.W. (kgs)	G.W. (Kgs)	Packaging Dimensions (LxHxW)	Gain	Screen Material
R84WV1	84" (4:3)	50.0	67.0	127.0	170.2	23.4	34.8	10.6	15.8	59.4"x4.6"x12.5"	1.1	CineWhite™
R92WV1	92"(4:3)	55.2	73.6	140.2	186.9	26.0	38.0	11.8	17.3	64.21"x4.76"x12.52"	1.1	CineWhite™
R100WV1	100"(4:3)	60.0	80.0	152.4	203.2	27.9	38.4	12.7	17.5	69.1"x4.6"x 12.5"	1.1	CineWhite™
R120WV1	120"(4:3)	67.7	98.6	172.0	250.4	33.2	42.3	15.1	19.2	81.1"x4.6"x12.5"	1.1	CineWhite™
R135WV1	135"(4:3)	81.0	108.0	205.7	274.3	37.5	54.3	17.0	24.7	90.2"x4.6"x12.5"	1.1	CineWhite™
R150WV1	150"(4:3)	90.0	120.0	228.6	304.8	45.8	59.0	20.8	26.8	99.2"x4.6"x12.5"	1.1	CineWhite™
R200WV1	200"(4:3)	120.0	160.0	304.8	406.4	50.7	71.7	23.1	32.6	129"x4.6"x12.5"	1.1	CineWhite™
R92WH1	92"(16:9)	45.0	79.9	114.3	202.9	24.3	32.0	11.0	14.5	54.7"x4.6"x12.5"	1.1	CineWhite™
R100WH1	100" (16:9)	49.0	87.0	124.5	221.0	25.8	36.4	11.7	16.5	58"x4.6"x12.5"	1.1	CineWhite™
R106WH1	106" (16:9)	51.9	92.2	131.8	234.2	27.8	37.5	12.6	17.0	61"x4.6"x12.5"	1.1	CineWhite™
R110WH1	110" (16:9)	54.0	96.0	137.2	243.8	28.7	38.6	13.0	17.5	63"x4.6"x12.5"	1.1	CineWhite™
R120RH1	120"(16:9)	59.0	104.7	167.6	297.2	30.5	44.0	13.9	20.0	68"x4.6"x12.5"	2.2	WraithVeil
R84WH1-A1080P3	84"(16:9)	41.1	73.0	104.4	185.4	22.9	28.9	10.4	13.1	50.5"x4.6"x12.5"	1.0	AcousticPro1080P3
R92WH1-A1080P3	92"(16:9)	45.0	79.9	124.0	221.0	24.3	32.0	11.0	14.5	54.7"x4.6"x12.5"	1.0	AcousticPro1080P3
R100WH1-A1080P3	100"(16:9)	49.0	87.0	124.5	221.0	25.8	36.4	11.7	16.5	58"x4.6"x12.5"	1.0	AcousticPro1080P3
R110WH1-A1080P3	110"(16:9)	54.0	96.0	137.2	243.8	28.7	40.8	13.0	18.5	65"x4.6"x12.5"	1.0	AcousticPro1080P3
R120WH1-A1080P3	120"(16:9)	58.9	104.7	149.1	265.9	30.5	40.8	13.8	20.0	68"x4.6"x12.5"	1.0	AcousticPro1080P3
R135WH1-A1080P3	135"(16:9)	66.2	117.7	167.6	297.2	36.4	45.2	16.5	22.5	75.6"x4.6"x12.5"	1.0	AcousticPro1080P3
R150WH1-A1080P3	150"(16:9)	73.6	130.7	186.9	332.0	42.8	55.9	18.5	25.5	82.8"x4.6"x12.5"	1.0	AcousticPro1080P3

## ezFrame Dimensions Table

Model	Screen Diag. & Aspect Ratio	Overall Width (A)	View Width (A1)	Overall Height (B)	View Height (B1)	Frame Width (C)	Frame Thickness (D)
R84WV1	84" (4:3)	1826	1707	1400	1280	61	41
R92WV1	92"(4:3)	1989	1869	1521	1402	61	41
R100WV1	100"(4:3)	2149	2029	1641	1519	61	41
R120WV1	120"(4:3)	2621	2504	1839	1720	61	41
R135WV1	135"(4:3)	2860	2741	2179	2060	61	41
R150WV1	150"(4:3)	3170	3051	2410	2291	61	41
R200WV1	200"(4:3)	4183	4064	3167	3048	61	41
R92WH1	92"(16:9)	2149	2029	1270	1151	61	41
R100WH1	100" (16:9)	2329	2210	1359	1240	61	41
R106WH1	106" (16:9)	2461	2342	1440	1321	61	41
R110WH1	110" (16:9)	2555	2436	1491	1369	61	41
R120RH1	120"(16:9)	2779	2659	1610	1491	61	41
R84WH1-A1080P3	84"(16:9)	1981	1862	1171	1052	61	41
R92WH1-A1080P3	92"(16:9)	2149	2029	1270	1151	61	41
R100WH1-A1080P3	100"(16:9)	2329	2210	1359	1240	61	41
R110WH1-A1080P3	110"(16:9)	2555	2436	1491	1369	61	41
R120WH1-A1080P3	120"(16:9)	2779	2659	1610	1491	61	41
R135WH1-A1080P3	135"(16:9)	3109	2990	1801	1679	61	41
R150WH1-A1080P3	150"(16:9)	3439	3320	1989	1869	61	41

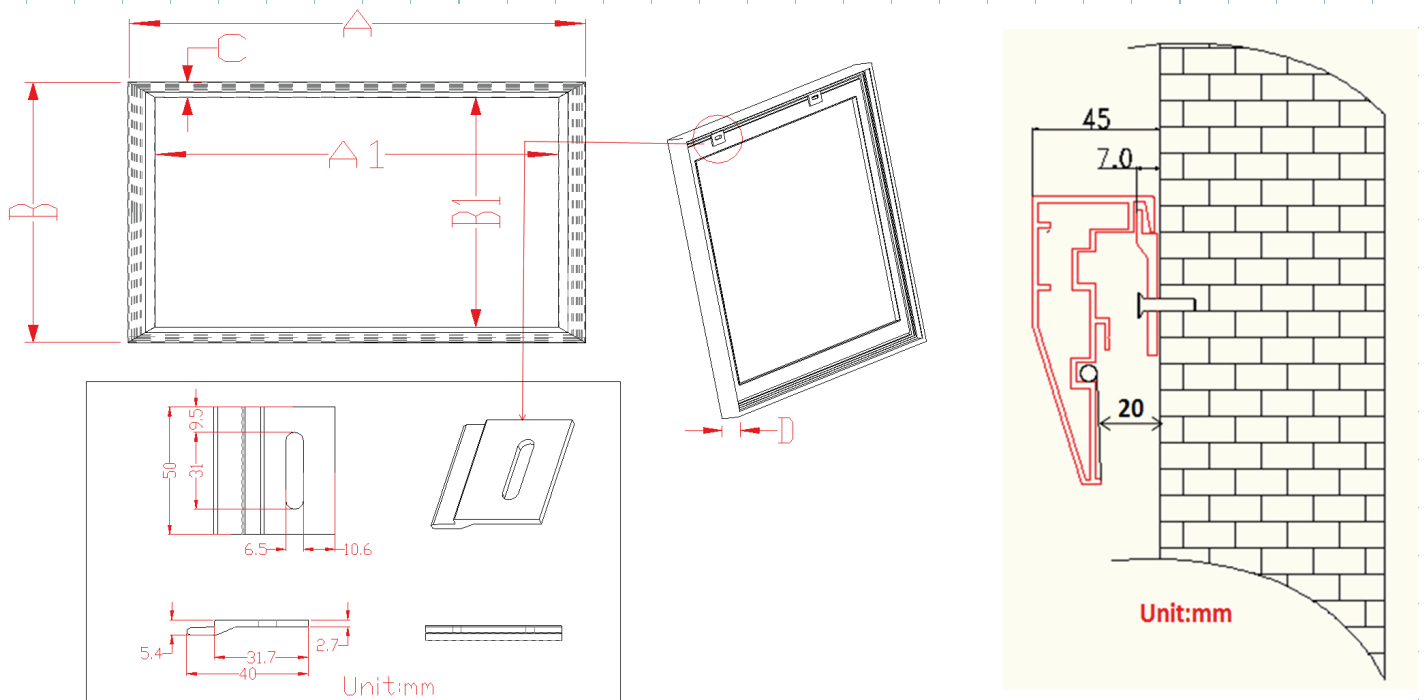
Unit: mm

## ezFrame Dimensions Table

Model	Screen Diag. & Aspect Ratio	Overall Width (A)	View Width (A1)	Overall Height (B)	View Height (B1)	Frame Width (C)	Frame Thickness (D)
R84WV1	84" (4:3)	71.9	67.2	55.1	50.4	2.4	1.6
R92WV1	92"(4:3)	78.3	73.6	59.9	55.2	2.4	1.6
R100WV1	100"(4:3)	84.6	79.9	64.6	59.8	2.4	1.6
R120WV1	120"(4:3)	103.2	98.6	72.4	67.7	2.4	1.6
R135WV1	135"(4:3)	112.6	107.9	85.8	81.1	2.4	1.6
R150WV1	150"(4:3)	124.8	120.1	94.9	90.2	2.4	1.6
R200WV1	200"(4:3)	164.7	160.0	124.7	120.0	2.4	1.6
R92WH1	92"(16:9)	84.6	79.9	50.0	45.3	2.4	1.6
R100WH1	100" (16:9)	91.7	87.0	53.5	48.8	2.4	1.6
R106WH1	106" (16:9)	96.9	92.2	56.7	52.0	2.4	1.6
R110WH1	110" (16:9)	100.6	95.9	58.7	53.9	2.4	1.6
R120RH1	120"(16:9)	109.4	104.7	63.4	58.7	2.4	1.6
R84WH1-A1080P3	84"(16:9)	75.9	71.2	49.2	44.5	2.4	1.6
R92WH1-A1080P3	92"(16:9)	84.6	79.9	50.0	45.3	2.4	1.6
R100WH1-A1080P3	100"(16:9)	91.7	87.0	53.5	48.8	2.4	1.6
R110WH1-A1080P3	110"(16:9)	100.6	95.9	58.7	53.9	2.4	1.6
R120WH1-A1080P3	120"(16:9)	109.4	104.7	63.4	58.7	2.4	1.6
R135WH1-A1080P3	135"(16:9)	122.4	117.7	70.9	66.1	2.4	1.6
R150WH1-A1080P3	150"(16:9)	135.4	130.7	78.3	73.6	2.4	1.6

Unit: inch

The listed measurements are for general reference only. Please contact Elite Screens to verify product design and dimensions before attempting to integrate its products with any structural or furniture modification. Although a manufacturer may offer product advice, it may be taken or disregarded at the integrator's discretion. Elite Screens will not be held responsible or be otherwise liable for faulty installations.



# ezFrame & Sable Frame Series

## Rahmenleinwand

Gebrauchsanweisung

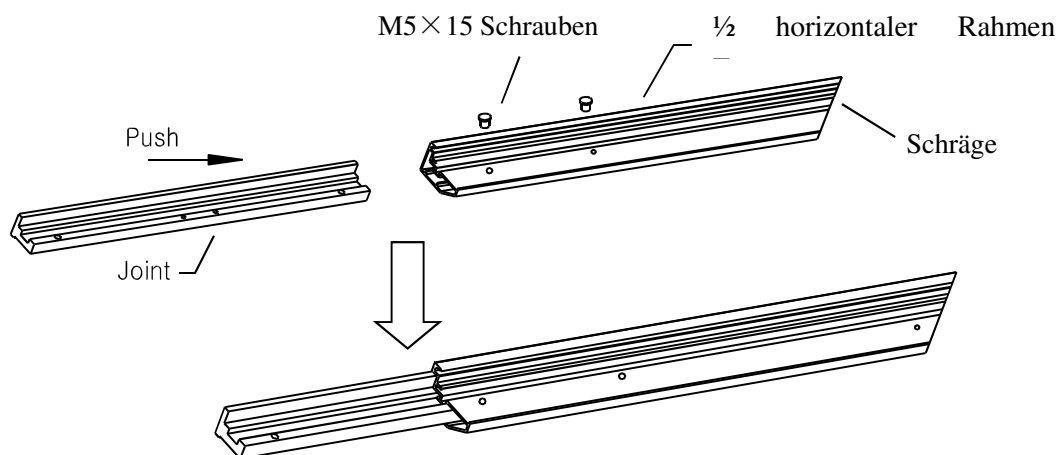
### Teileliste

1. Rahmenteile	x 6	(4 x oben & unten + 2 x Seiten)
2. Spannschäfte	x 6	(4 x oben & unten + 2 x Seiten)
3. Leinwandtuch	x 1	
4. Verbindungsstück Mitte	x 2	
5. Verbindungsstück Ecken	x 4	
6. Wandhalter	x 2 – 3	(je nach Modell)
7. M5x50 Schrauben	x 6	
8. Dübel	x 6	
9. M5x15 Schrauben	x 16	
10. Stützstrebe	x 1 – 2	(je nach Modell)
11. Adapter Stützstrebe	x 2 – 4	(je nach Modell)
12. Klemmen	x 60 – 180	(je nach Modell)

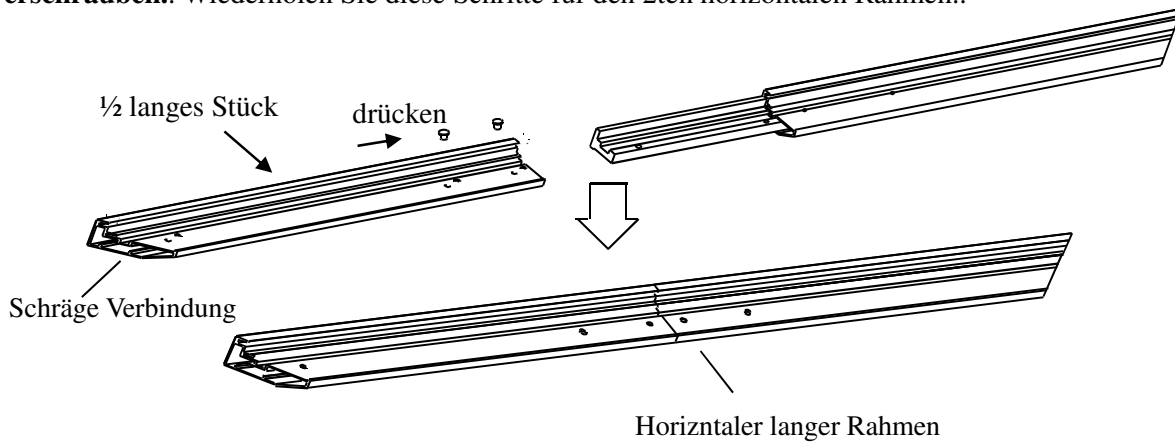
**Stellen Sie sicher, dass alle Teile vorhanden sind, bevor Sie mit dem Zusammenbau beginnen.**

### Zusammenbau

1. Verbindungsstück Mitte in einen 1/2 horizontalen Rahmen einführen und mit 2 **M5x15 verschrauben**

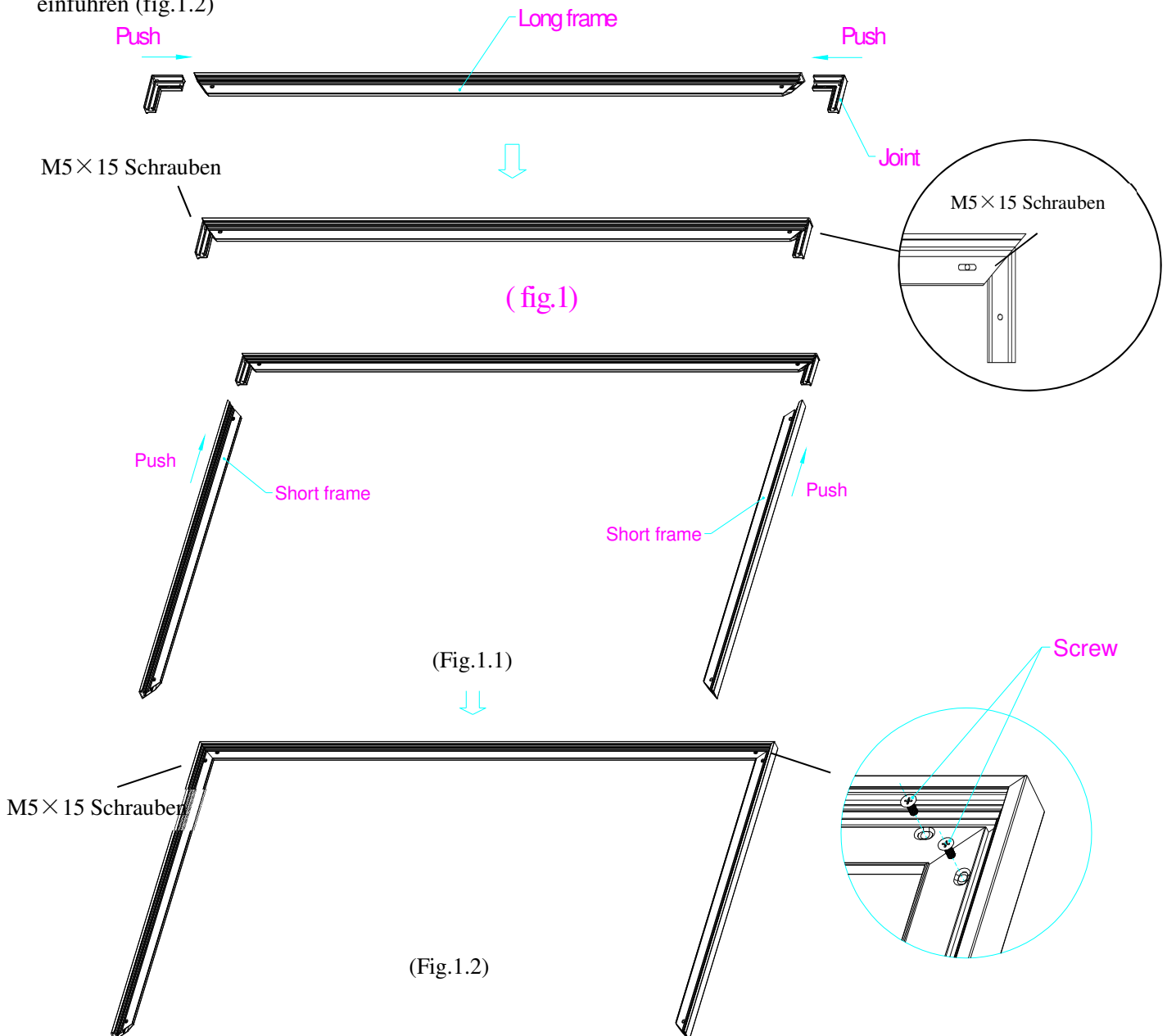


2. Die andere Hälfte des horizontalen Rahmens mit dem Verbindungsstück Mitte verbinden und mit 2 **M5x15 verschrauben**.. Wiederholen Sie diese Schritte für den 2ten horizontalen Rahmen..



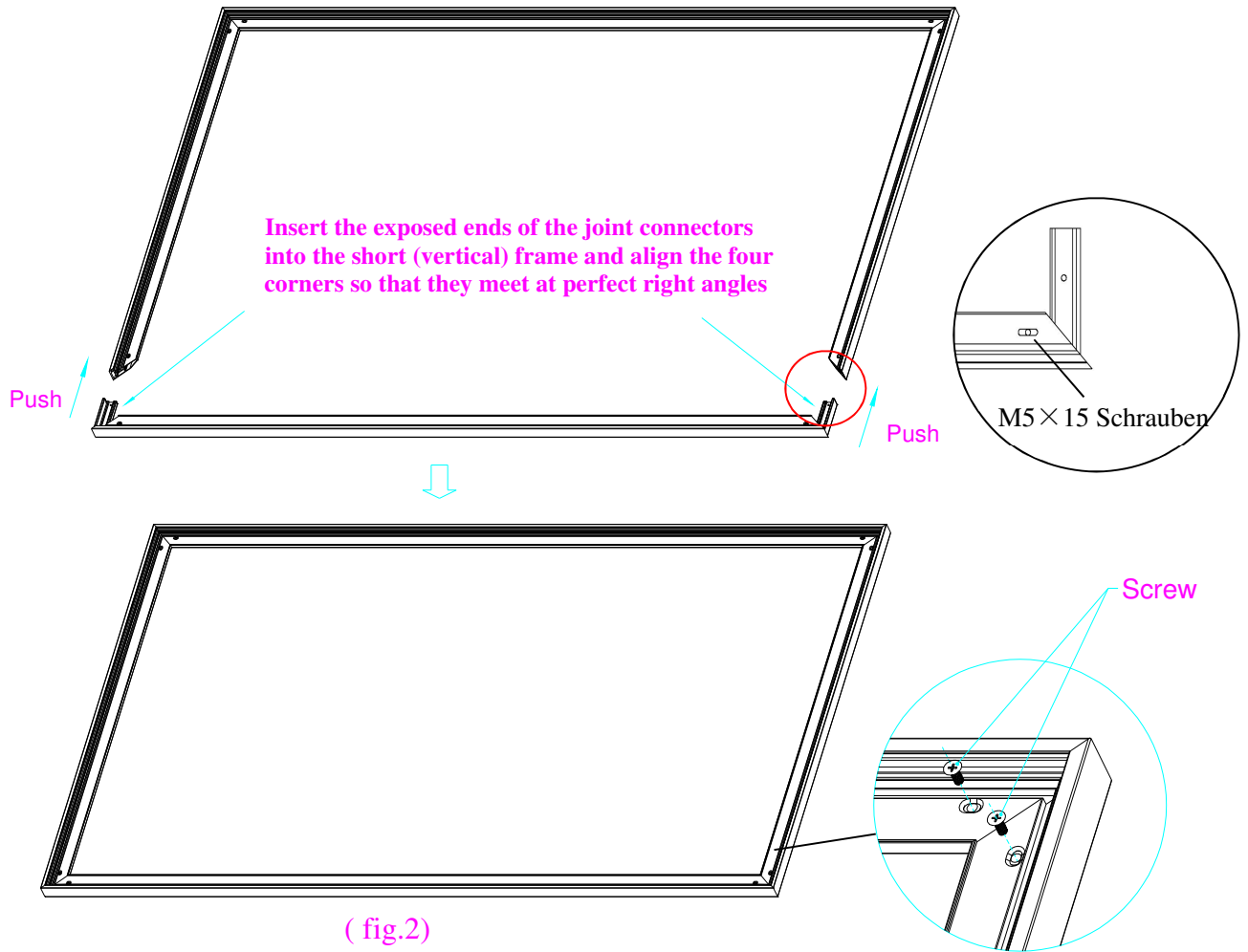
**Ziehen Sie die Schrauben noch nicht fest an.**

3. Verbindungsstück Ecke einführen und mit 2 **M5x15 verschrauben**. (see Fig.1). Dann die vertikalen Rahmenteile einführen (fig.1.2)





4. Alle Teile zusammenstecken (Fig.2)

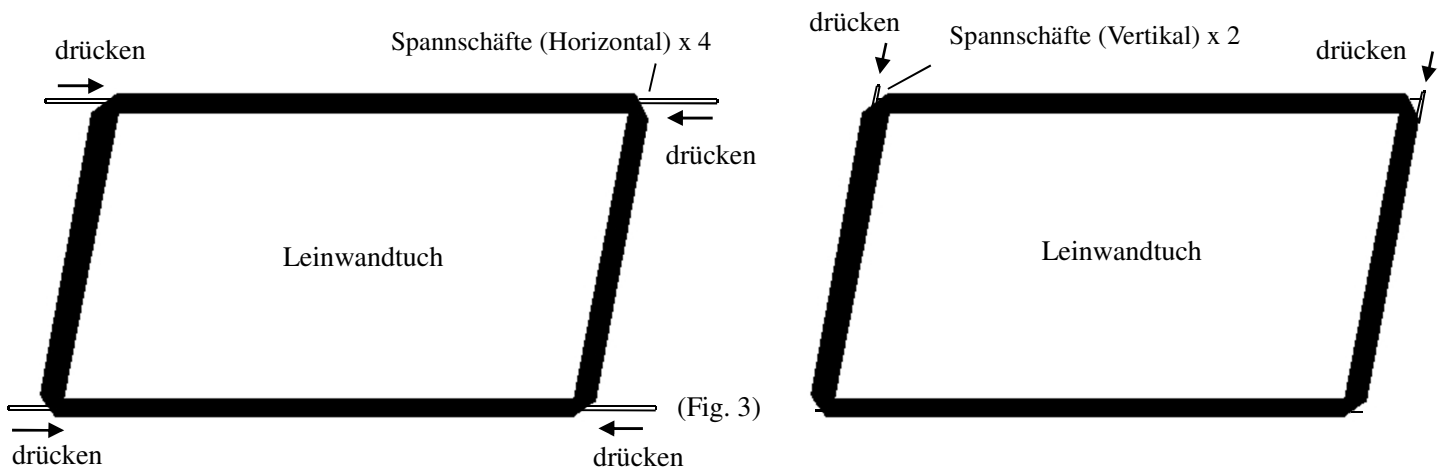


## Leinwandtuch befestigen

1. Das Tuch auf einer sauberen Fläche entrollen. Die Spannschäfte von allen 4 Ecken einführen ( fig.3)

Spannschäfte (Vertikal) x 2

Spannschäfte (Horizontal) x 4



2. Legen Sie den Rahmen und das Tuch mit der Vorderseite auf eine saubere Oberfläche.

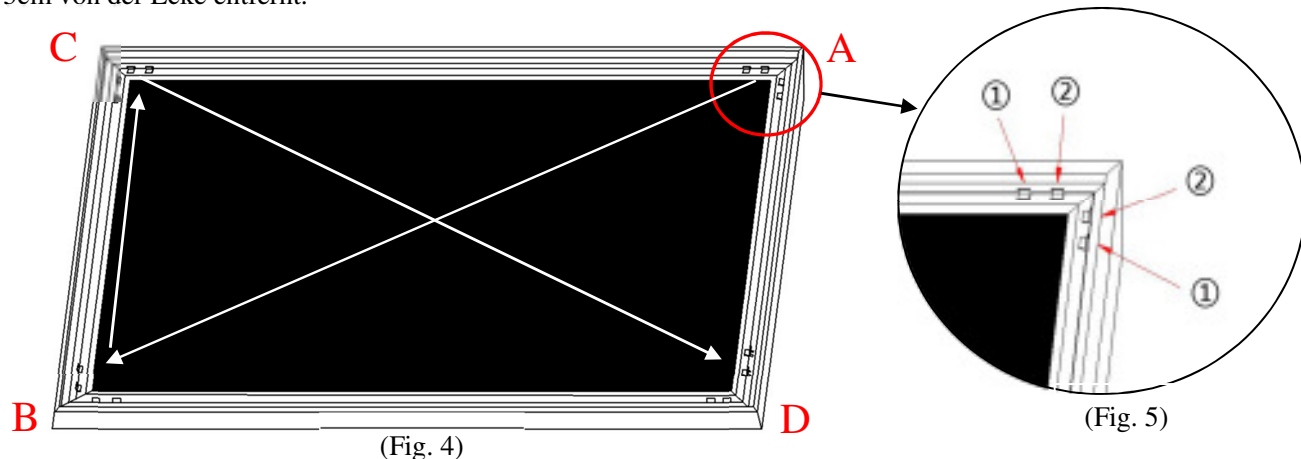
3. Das Tuch mittig ausrichten.

*Das Tuch ist etwas kleiner als der Rahmen, damit es ordentlich gespannt werden kann.*

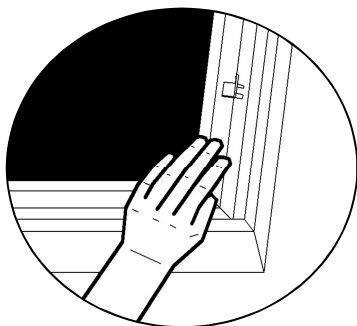
#### 4. Die Klemmen befestigen

(1) Fangen Sie an den Enden an **A**→**B**→**C**→**D** (Fig.4)

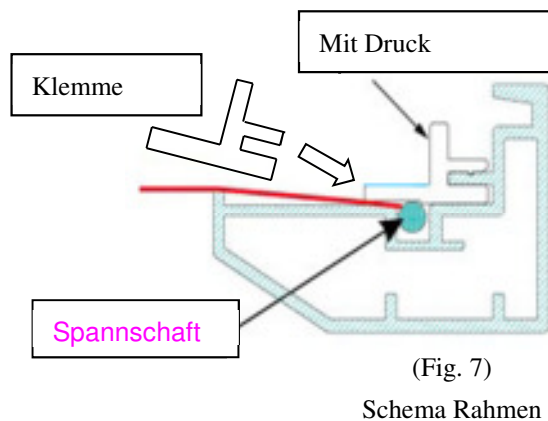
(2) Fangen Sie wie unter Fig. 5 gezeigt an. Klemme ① ist ca. 10cm von der Ecke entfernt. Klemme ② ist ca. 5cm von der Ecke entfernt.



(3) Spannen Sie das Material zu den Seiten hin.  
Drücken Sie die Klemmen rein (Fig.6-Fig.7).



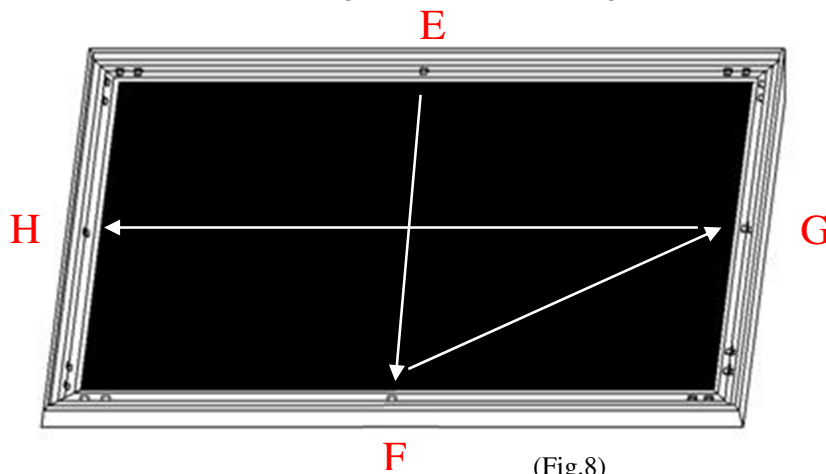
(Fig. 6)



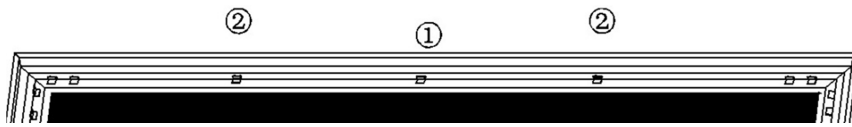
(Fig. 7)

Schema Rahmen

(4) Jetzt in der Mitte Klemmen anbringen **E**→**F**→**G**→**H**. (Fig.8)

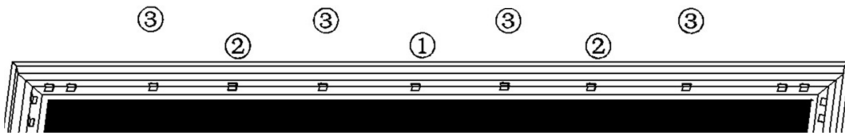


(Fig.8)



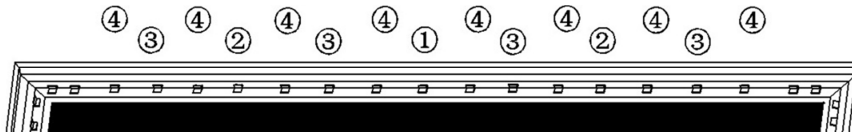
(Fig.9)

(5) die nächsten Klemmen in der Mitte ② zwischen Anderen ① anbringen. (Fig.9)



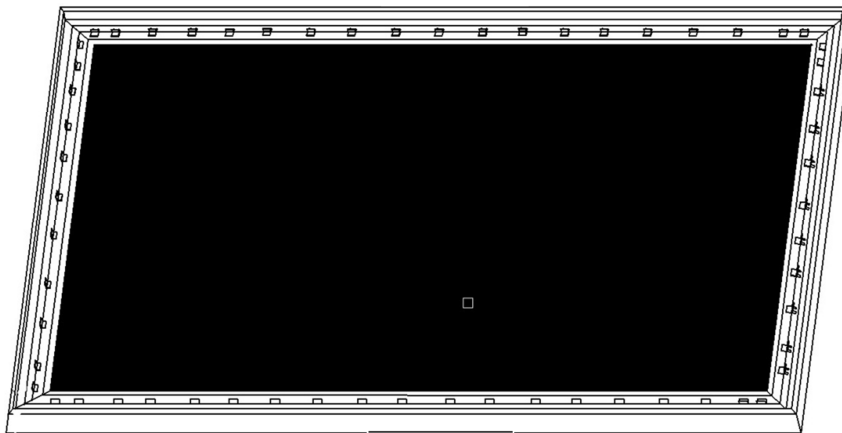
(Fig.10)

(6) weiter mittig fortfahren ③ zwischen ① und ② und der Ecke. (Fig.10)



(Fig.11)

(7) weiter so fortfahren (4) Fig.11



(Fig.12)

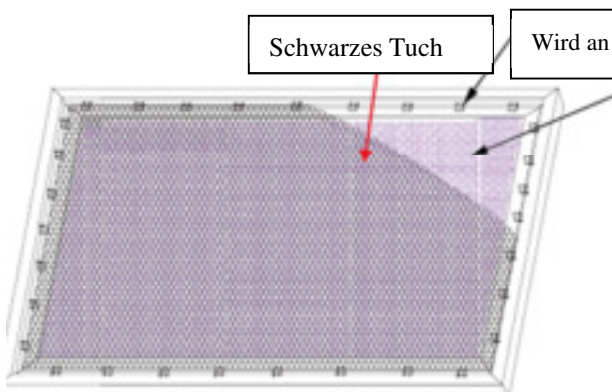
(8) Die restlichen Klemmen aufbrauchen biss alles gut verspannt ist (Fig.12)

## Schwarzes Tuch für die Rückseite nur ! bei Akustik Tüchern

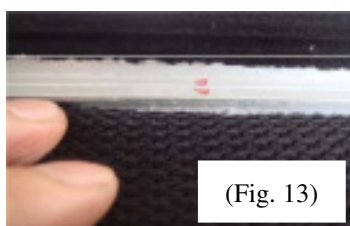
Nur für AcousticPro Modelle.

Um Reflexionen von der rückseitigen Wand zu vermeiden.

**Das schwarze Tuch wird an den Klettverschlüssen leicht befestigt.**



Die Klettverschlüsse bei den Markierungen anbringen (Fig. 13). einstecken (Fig 14). Und das schwarze Tuch auf die Kletten drücken (Fig. 15 & 16)



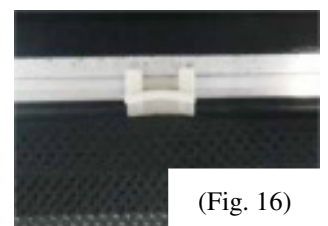
(Fig. 13)



(Fig. 14)



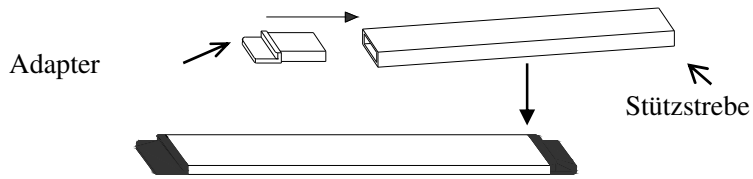
(Fig. 15)



(Fig. 16)

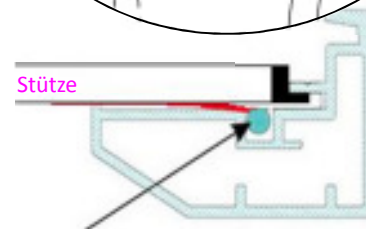
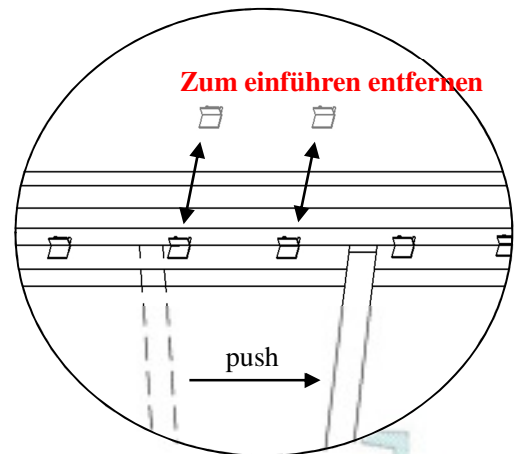
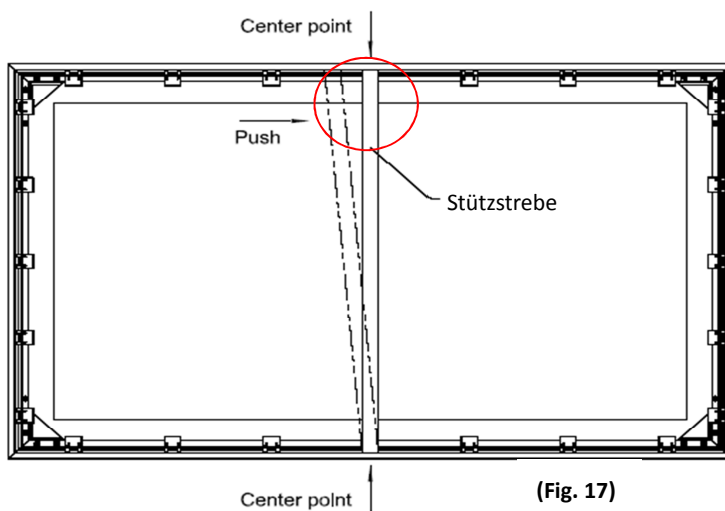
# Center Support Bar

1. Den Adapter für die Stützstreben einschieben..

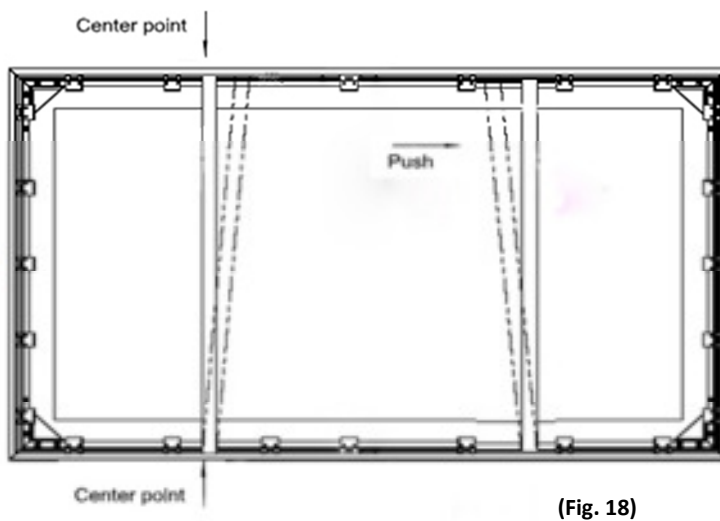


2. Die Stützstrebe ca. mittig in den Rahmen stecken.  
( Fig. 17 und Fig. 18 ).

**Diagonal models 135" and below use 1x Center Support Bar**



**Bei Modellen ab 135" werden 2 Stützen benötigt**



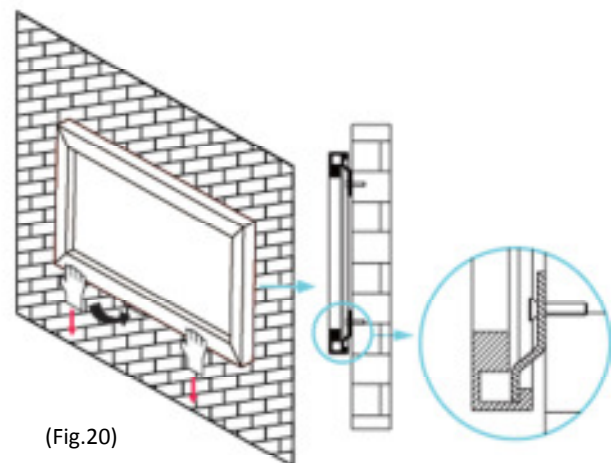
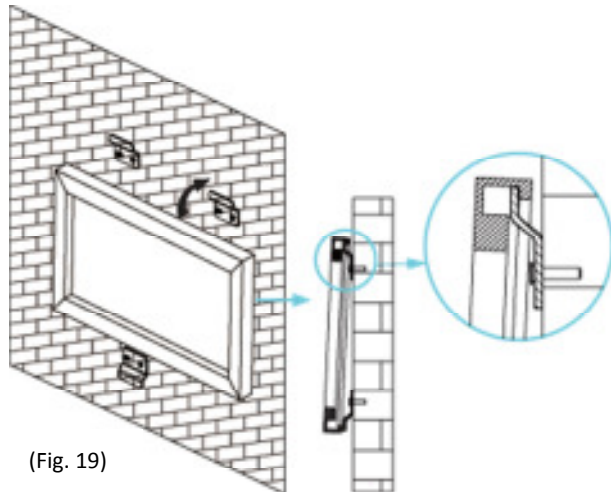
3. In gleichem Abstand einführen.

# Installation

1. Suchen Sie sich eine geeignete Position an der Wand aus, und markieren Sie die Stelle für die Halter.
2. Bohren Sie entsprechende Löcher.
3. Befestigen Sie die Halterungen.

## **2 Halterungen oben für Modelle bis 135" und 3 Halterungen oben bei Größen über 135".**

4. Positionieren Sie den Rahmen oben auf den Halterungen (Fig. 19) und drücken Sie nach unten bis die Halter gut sitzen..
5. Die können den Rahmen auf den Halterungen nach links und rechts bewegen..
6. Benutzen Sie beide Hände um den Rahmen final in die untere Halterung zu drücken. Fig 20.



Weitere Informationen finden Sie auf:

[www.elitescreens.com](http://www.elitescreens.com)