

SAFE-TEC

4





Defence products

5

Safe-Bar MKVI

- 30T
Autolock Rapid mount

7

Safe-Bar MKVII

- 80T
Lightweight agility

9

Safe-Bar MKVII 3 in 1

- 46T
Modular Agility for Recovery vehicles

11

Safe-Blox

13T - 62T
Heavy duty Snatch blocks

12

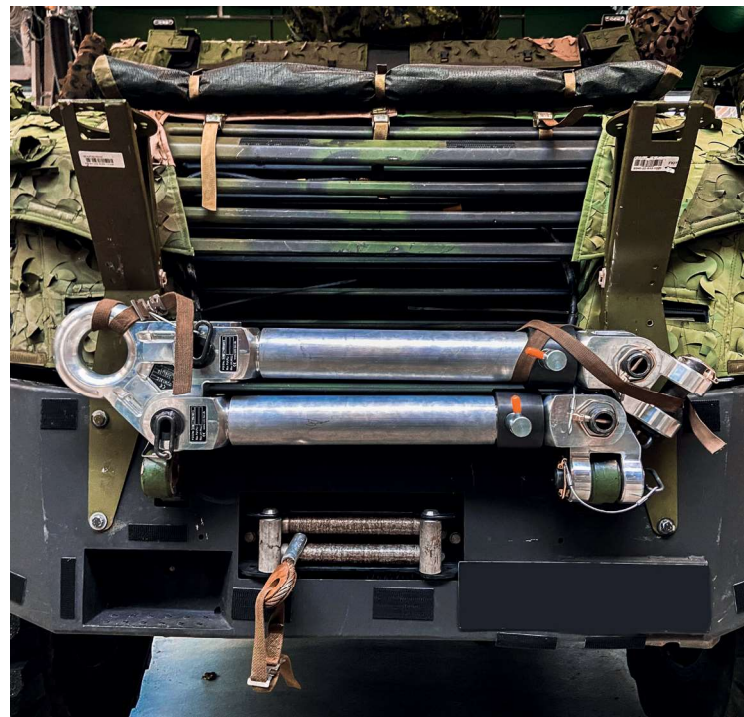
Wheelduck Crown

- 13t/axle
Modern logistic systems for vehicles

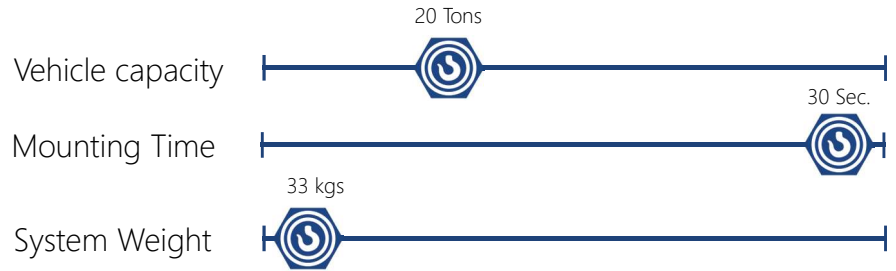
14

Wheelduck 2.0

- 10t/axle
Light weight lifting systems for vehicles



5 SAFE-BAR MKVII



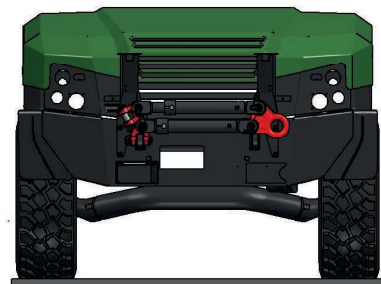
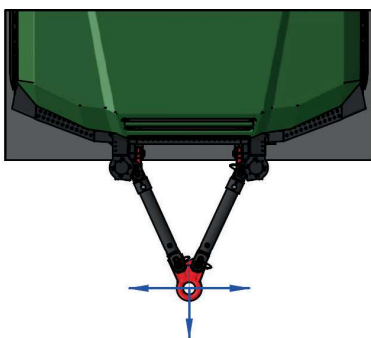
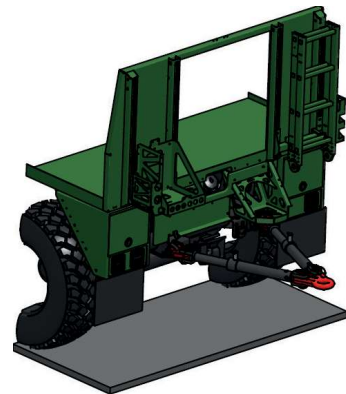
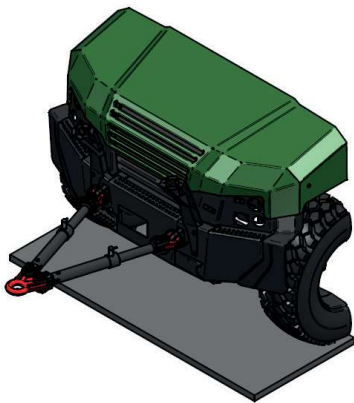
A solution delivering optimal mobility in a light weight design. Built on 30 years of system know-how, the MKVI is the newest generation of the Safe-Bar system. By close collaboration with partners and in-field users, this new A-Frame solution brings you new and

Manufactured in High tensile Aluminum, keeps system weight below 35 kgs.

Various Stowage options for logistic & operational purposes.

No obstruction of visibility, and increase applications to multiple platforms.

Rapid autolock function achieves mounting time below 30 seconds.





7 SAFE-BAR MKVII



The Safe-Bar MKVII system for mobilizing Mid- to Heavy duty vehicles up to 80T. Through extensive testing and material innovation,

ration of the Safe-Bar system. By close collaboration with partners and in-field users, this new A-Frame solution brings you trailblazing innovation and alternative use of material.

Molded in High tensile Aluminum, keeps system weight below 33 kgs.

Various Stowage options for logistic & operational purposes.
Currently fitted on combat and support vehicles across the globe.

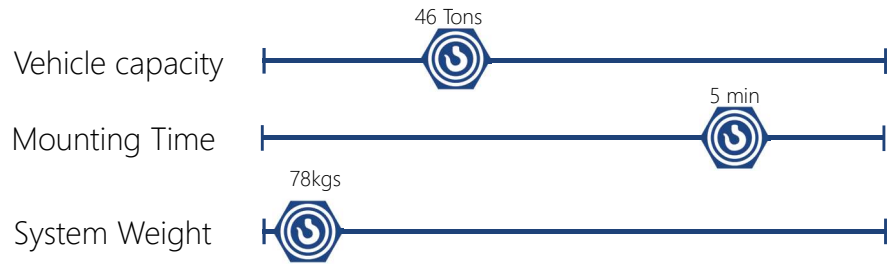
Optional extension and angle changing adaptors for perfect fitting on all platforms.

Adaptors for all Stanag eyelets - Cross-use functionality to solve multiple tasks.





9 SAFE-BAR MKVII 3 in 1



The Safe-Bar MKVII 3 in 1 is a modular system for creating the best possible solution for everything from Recovery platforms to troop carriers. A field proven recovery system for Mid- to Heavy duty vehicles up to 46T

Built on 30 years of Recovery know-how, the MKVII is a line of 7+ modules the newest generation of the Safe-Bar system. By close collaboration with partners and in-field users, this A-Frame solution brings you trailblazing innovation and alternative use of material.

**Various Stowage options for logistic & operational purposes.
Currently fitted on combat and support vehicles across the globe.**

Optional extension and angle changing adaptors for perfect fitting on all platforms.

Adaptors for all Stanag eyelets - Cross-use functionality to solve multiple tasks.





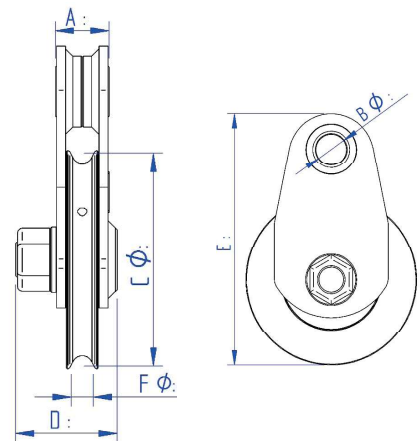
11 SAFE-BLOX

The Safe-Tec Snatch Blocks are designed to be simple, strong and durable. The versatility of the Snatch Blocks gives you all options in lifting, pulling and pully solutions. Regarding quality, the Safe-Tec Snatch Blocks are CE approved and follows EN std. 14492-1-2006. In-House testing, development and productions ensures you a strong and dependable component for everyday use. Following the Safe-Tec philosophy; strong components are not necessarily heavy.

Through research and development, these Blocks have been designed to withstand the stress of everyday use, using as little material as possible. A total weight between 9,3kgs-37,6 kgs. The Safe-Tec Snatch Blocks comes in 4 different sizes, to let you choose the solution that fits your needs. Choosing the correct size depends on the intended use, wire size and wether it will be used for lifting or pulling.

Our Snatchblocks are paired with shackles from Delta. For solutions including lifting, the Supershackle delivers trust in the high-grade steel and ease of use. This makes the Snatch block easier to mount and dismount.

Part no.	A	B	C	D	E	F
KAS116K	41	32.5	179	86	273	16
KAS119K	41	32.5	179	86	273	16
KAS120DB	48	36	205	95	320	18
KAS120K	48	36	205	95	320	18
KAS126K	48	36	205	95	320	18
KAS140K	58	43	234	111	111	24
KAS150K	58	43	234	111	111	24
KAS162	66	53	286	118	118	26
KAS162K	66	53	286	118	118	26

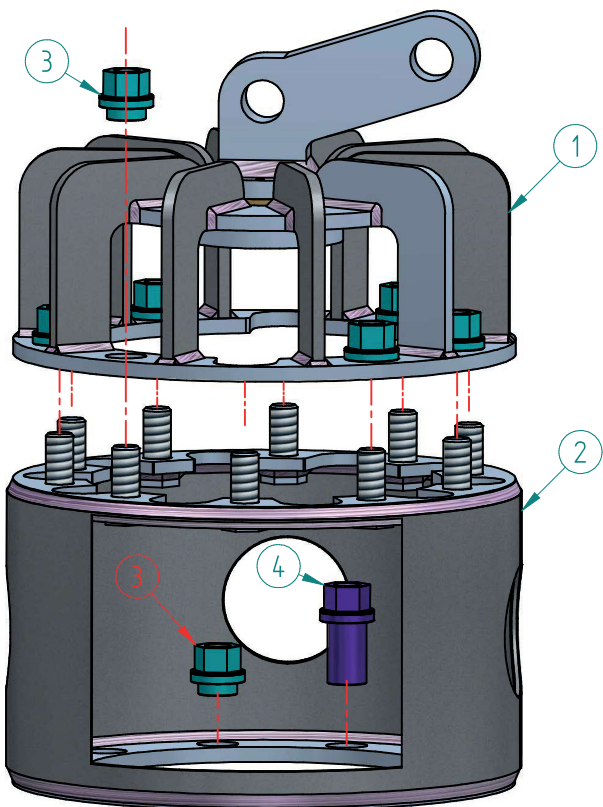


Part no.	NSN	Max Pull(PL)	Max Lift (WLL)	Rope Diam.	MBL t/kN	Weight Block	Shackle	Weight Shackle	Weight Total
KAS116K	3940226326008	16t		Ø16	32/318	7.1kgs	8.5t	2.25kgs	9.3kgs
KAS119K		20t	10t	Ø16	42/418	7.1kgs	12,5t*	2.78kgs	9.9kgs
KAS120DB	3940226275369	24t	12t	Ø18	68/677	10.5kgs	Excl.		10.5kgs
KAS120K	3940226199940	24t		Ø18	68/677	10.5kgs	12t	4.3kgs	14.8kgs
KAS126K		26t	13t	Ø18	68/677	10.5kgs	18t*	5.25kgs	15.7kgs
KAS140K		40t		Ø24	80/797	16.8kgs	17t	7.8kgs	24.6kgs
KAS150K		50t		Ø24	80/797	16.8kgs	25t	12.6kgs	29.4kgs
KAS162	3940226280728	60t		Ø26	120/1195	25.0kgs	Excl.		25.0kgs
KAS162K	3940226223168	60t		Ø26	120/1195	25.0kgs	25t	12.6kgs	37.6kgs

*Super shackle

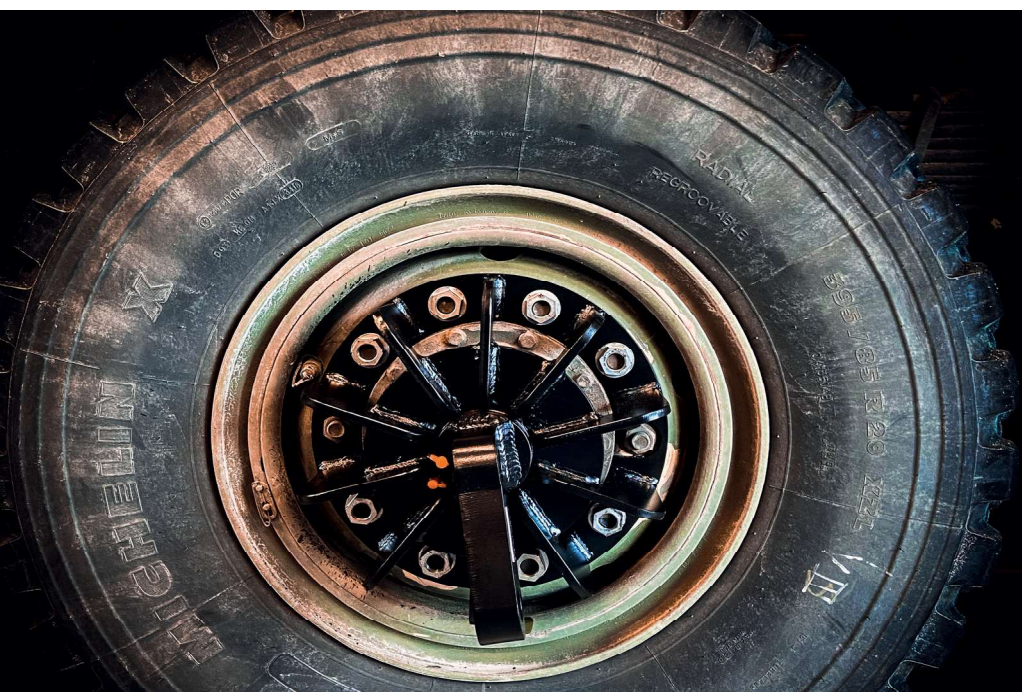
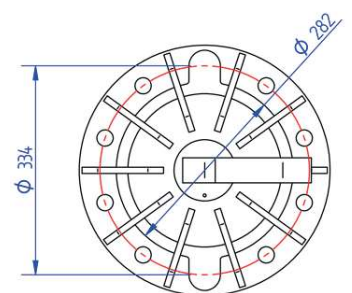
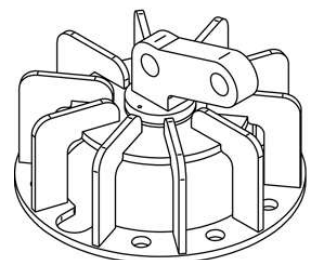
On today's commercial vehicles, safety restrictions and composite material makes it hard to find bearing attachment points. The Wheelduck solves this problem, by connecting directly on to the axle of the vehicle. A simple and strong solution. The wheelduck has been on the market for many years. Safe-Tec In-house testing facilities guarantees a solid construction and high strength.

The original Crown construction are for the heavier material. For lifting and towing, this solution gives you a solid anchor point for everything from roadside help to logistics. The basic 10 studs Wheelduck WHE001 is designed for front wheels, with available 6, 8 or 10 studs adaptors for single or dual mounted axles.



Capacity	Per Wheel	Per Axle
Max pull (PL)	13t	26t
Lift (WLL)	6.5t	13t

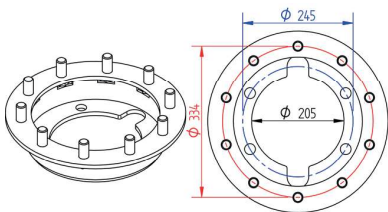
WHE001



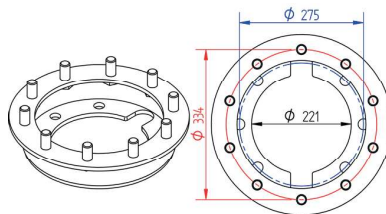


Pos.	Part no.	Item Description	Weight	Qty.
1	WHE001	Wheelduck for Single Mounted Wheels 22.5" with 10 holes	24 kgs	1
2	WHE002	Adaptor for dual mounted wheels 17.5"/19.5" with 8 holes	12 kgs	1
	WHE003	Adaptor for dual mounted wheels 17.5"/19.5" with 6 holes	13 kgs	1
	WHE011	Adaptor for dual mounted wheels 22.5" with 10 holes	22 kgs	1
	WHE012	Adaptor for dual mounted wheels 17.5"/19.5" with 8 holes	22 kgs	1
	WHE013	Adaptor for dual mounted wheels 17.5" with 6 holes	22 kgs	1
	WHE014	Adaptor for dual mounted trailer wheels 17.5"/19.5"with 10 holes	22 kgs	1
3	NUT004B	Nut type I MAN, DAF, Setra, Bova, Iveco & Renault		8
	NUT005B	Nut type II Volvo		8
	NUT006B	Nut type III Scania		8
	NUT002B	Nut type 0 MB Atego		8
4	NUT004/5/6A	Use existing aluminum Rim nuts already on the casualty		

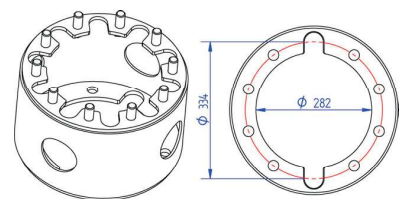
WHE002



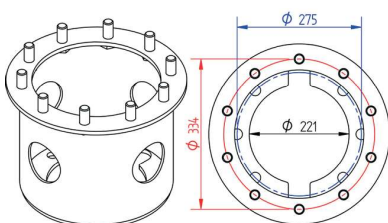
WHE003



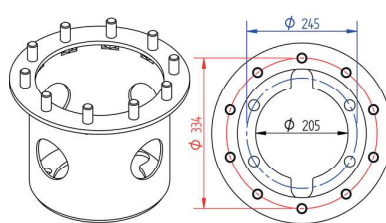
WHE011



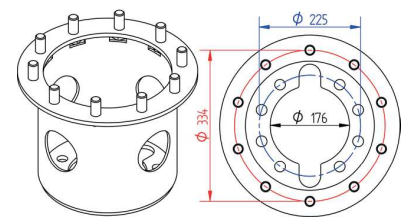
WHE012



WHE013



WHE014



For vehicle lifting and recovery, the Wheelducks delivers an easy anchoring at an ultra light weight - A simple and strong solution.

8 or 10 holes? Or steel or aluminum? The Safe Tec Wheelducks adapts to all rim types which makes it the most versatile duck system on the market. Lifting and free pulling is handled easily. The wheelduck are easily mounted and takes around 5 minutes to install. This secures you a simple and durable system which speeds up your workflow.

The wheelduck has been on the market for many years.

Safe-Tec In-house testing facilities guarantees a solid construction and high strength.



Capacity	Per Wheel	Per Axle
Max pull (PL)	10t	20t
Lift (WLL)	5t	10t







Leopard 2
Leopard 1
Wisent 1
Wisent 2
Piranha 3

Piranha 5
Duro
Miller Rotator
Supacat
Eagle 5

VCR Dragon
Ajax

