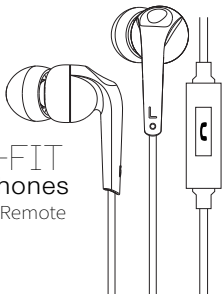


RX18P

COMFORT-FIT In-Ear Headphones

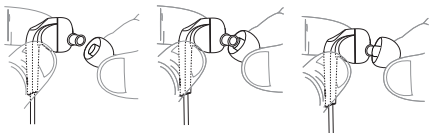
with Microphone & Remote



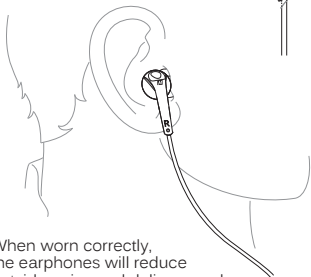
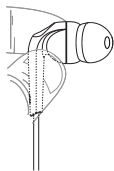
HOW TO USE

1. Select and install the correct eartips.
The RX18P is an in-ear headphone and relies on a tight seal between eartip and ear canal to deliver great sound and bass. Three sizes of ear tips are included to ensure you get the best fit. We recommend trying all of them and selecting the ones with the best sound, bass response, and comfort for your ears.

Install eartips as shown. Make sure eartips are mounted securely before use.



2. Use the L/R markings to identify the left and right earpieces. They are not interchangeable. Put the earphones in your ears ensuring that the eartips fit completely inside your ear canal. Adjust the earpieces for an airtight seal.



3. When worn correctly, the earphones will reduce outside noise and deliver good bass impact. If you do not get much bass or hear tinny sound with excessive treble, re-adjust the fit of the earphones in your ears and/or try a different size of eartips.

MICROPHONE & REMOTE

The RX18P headset features an inline microphone and remote that can be used to answer phone calls and control media playback.

Remote operation for Apple® iPhone®, iPad®, iPod®, and most Android™ devices:

Function	Operation
Answer incoming phone call	Press the remote button
End phone call	Press the remote button
Play media*	Press the remote button
Pause media	Press the remote button
Skip to next track**	Double-press the remote button
Restart the track / previous track**	Triple-press the remote button
Activate Siri®/Voice control/Voice dialing**	Press and hold the remote button

* You may need to open the media player application for initial playback to start.

** Not all devices and applications support this functionality.

WARNING

Using headphones at high volumes for extended periods of time will result in permanent hearing damage. It is advised you keep volume levels moderate to low at all times for your safety. Turn the volume all the way down after connecting your earphones, then gradually increase the volume until you reach a comfortable listening level. Do not use while driving a car, cycling, operating machinery, or performing other activities that require hearing surrounding sounds.

SUPPORT

Contact support@meelec.com or visit www.MEEaudio.com

WARRANTY

The RX18P is covered by a 1-year manufacturer warranty. For more information, visit www.MEEaudio.com

