

RX18

COMFORT-FIT

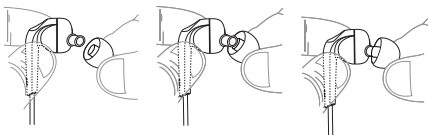
In-Ear Headphones

with Enhanced Bass

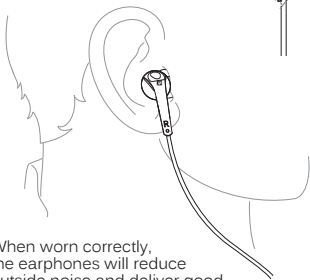
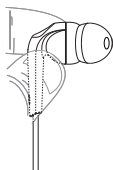
HOW TO USE

1. Select and install the correct eartips.
The RX18 is an in-ear headphone and relies on a tight seal between eartip and ear canal to deliver great sound and bass. Three sizes of ear tips are included to ensure you get the best fit. We recommend trying all of them and selecting the ones with the best sound, bass response, and comfort for your ears.

Install eartips as shown. Make sure eartips are mounted securely before use.



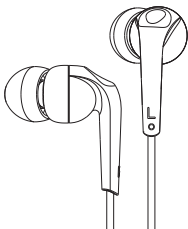
2. Use the L/R markings to identify the left and right earpieces. They are not interchangeable. Put the earphones in your ears ensuring that the eartips fit completely inside your ear canal. Adjust the earpieces for an airtight seal.



3. When worn correctly, the earphones will reduce outside noise and deliver good bass impact. If you do not get much bass or hear tinny sound with excessive treble presence, re-adjust the fit of the earphones in your ears and/or try a different size of eartips.

For assistance, contact:
support@meelec.com

Compatible with iPhone, iPad, iPod, phones, tablets, and computers, and other devices with a 3.5mm audio jack.



SAFETY AND CARE

- To clean, remove the eartips and rinse them under running water. Clean the earphones using a cotton swab damp with a small amount of rubbing alcohol. Allow the earphones and eartips to dry completely before resuming use
- If the device comes in contact with liquids, quickly wipe away. If submersed in water, do not turn the device on until completely dried. Note: liquid submersion voids the warranty
- Keep the device and packaging out of reach of children

WARNING

Using headphones at high volumes for extended periods of time will result in permanent hearing damage. It is advised you keep volume levels moderate to low at all times for your safety. Turn the volume all the way down after connecting your earphones, then gradually increase the volume until you reach a comfortable listening level. Do not use while driving a car, cycling, operating machinery, or performing other activities that require hearing surrounding sounds.

SUPPORT

Contact support@meelec.com or visit www.MEEaudio.com

WARRANTY

The RX18 is covered by a 1-year manufacturer warranty. For more information, visit www.MEEaudio.com

