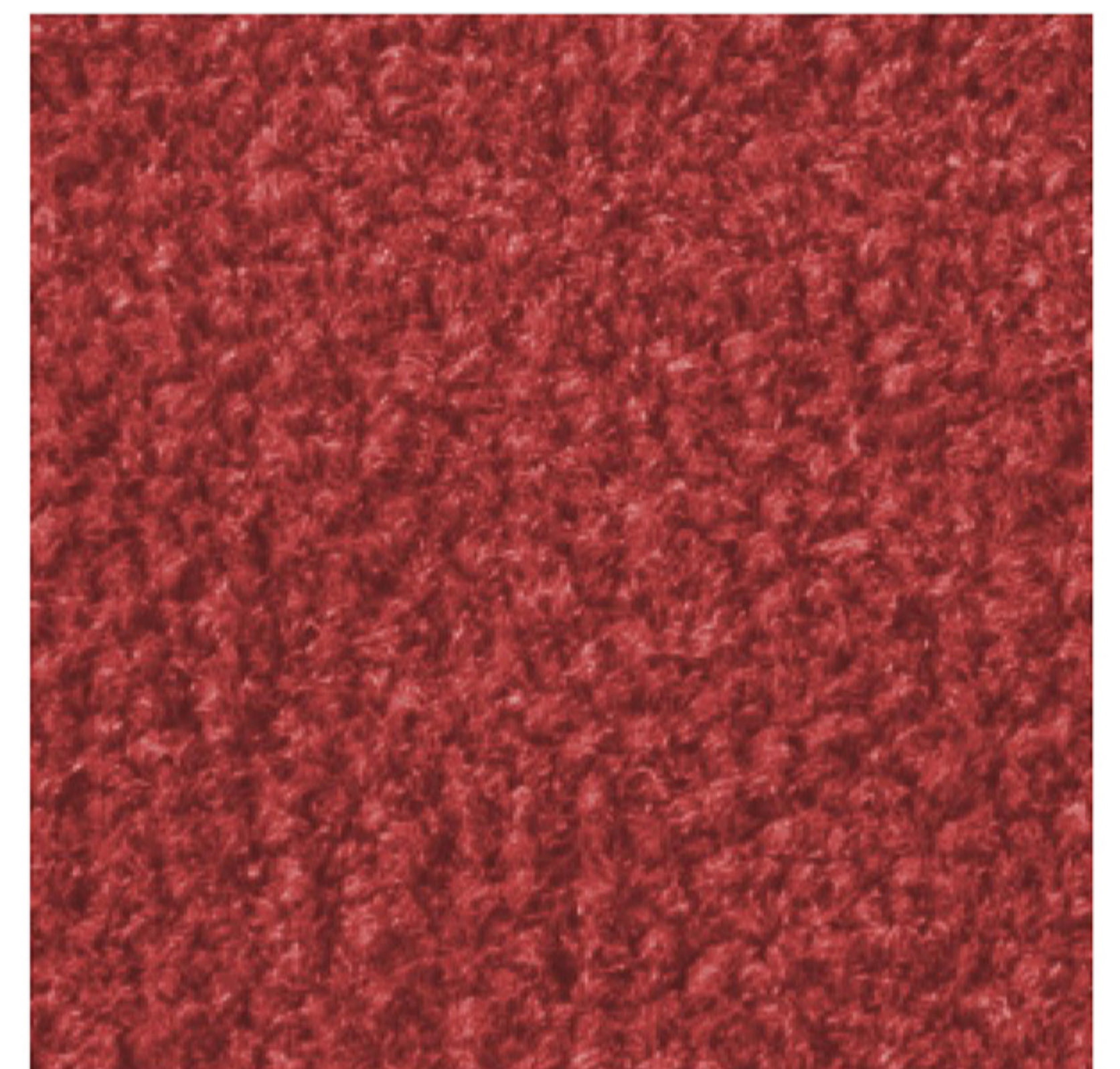


# Printed Custom Floor Mat.



## Your advantages at a glance

- Provides a detailed print image and simultaneous high dirt absorption
- Machine washable up to 40° C
- The mat lies flat to the ground and is skid resistant due to the rubber backing
- Ideal for long-term advertising purposes

## Specifications

<b>Yarn:</b>	Heat Set PA
<b>Gauge:</b>	1/10"
<b>Surface:</b>	Cut Pile
<b>Primary backing:</b>	Non-woven
<b>Back coating:</b>	NBR - Nitrile Butadiene Rubber
<b>Pile weight:</b>	800 g/m <sup>2</sup>
<b>Total weight:</b>	2900 g/m <sup>2</sup>
<b>Border:</b>	Approx. 20 mm
<b>Washing temperature:</b>	40° C
<b>Fire protection classification:</b>	EN 13501-1



