

ALIVAR

ITALIAN CONTEMPORARY LIVING



ALIVAR

Pelli / Leathers

Pelli
/
leathers

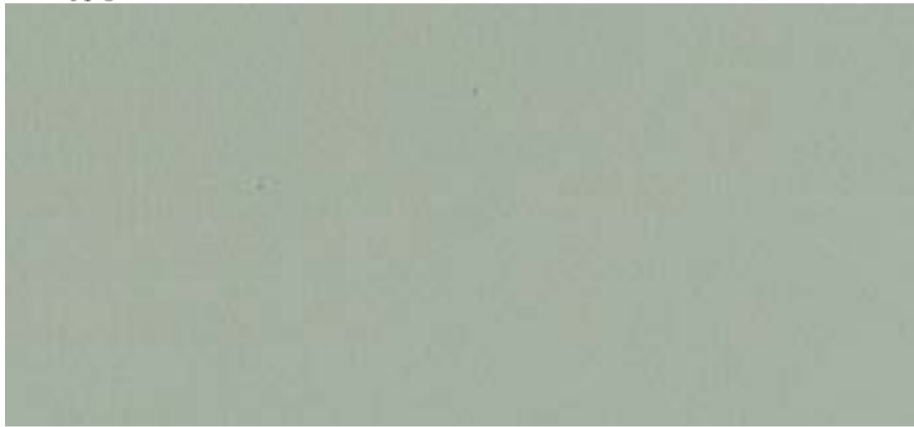
PELLE / LEATHER CAT. E



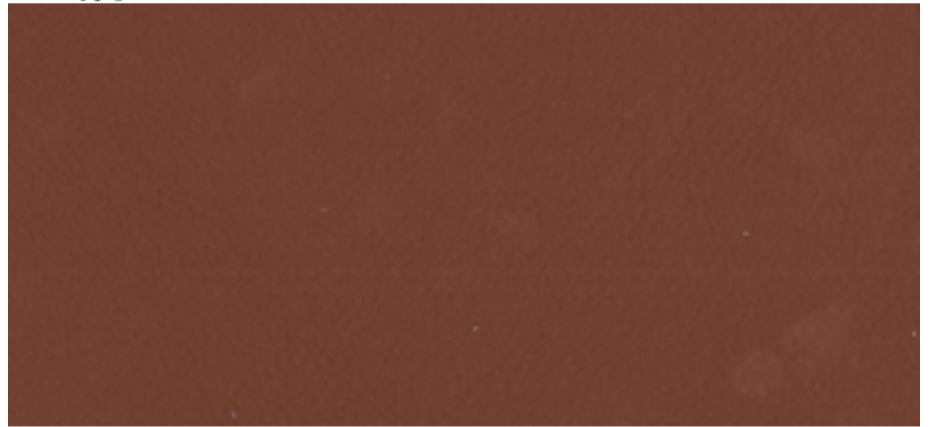
E01.jpg



E02.jpg



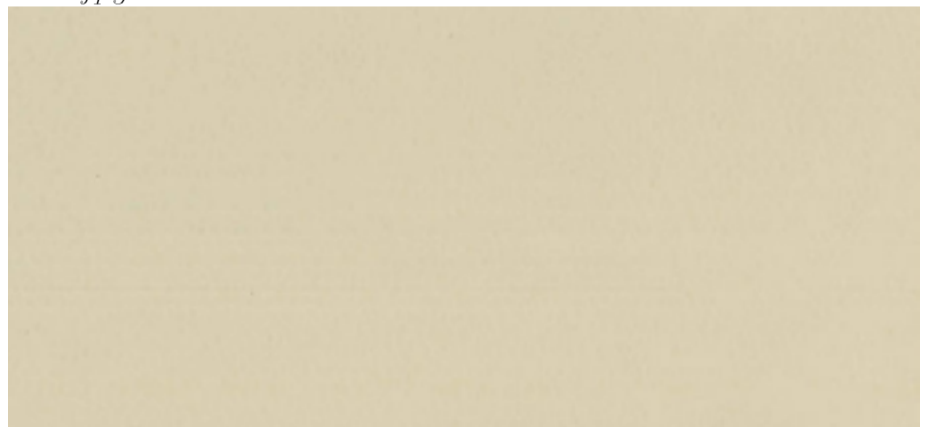
E03.jpg



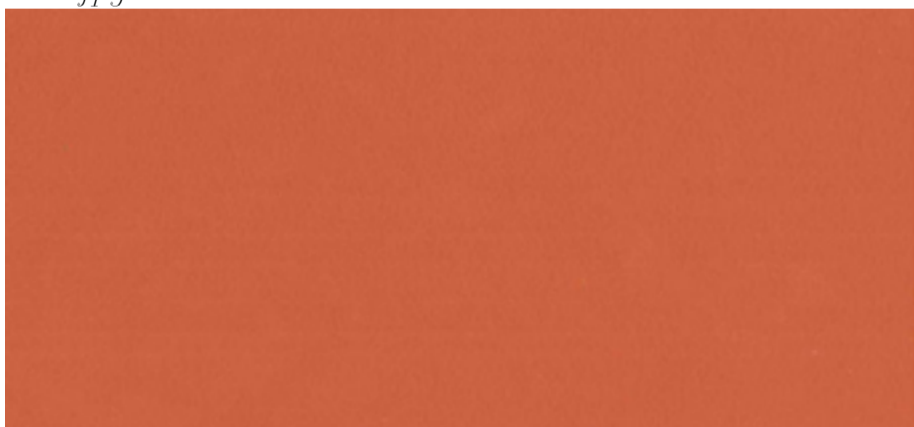
E04.jpg



E05.jpg



E06.jpg



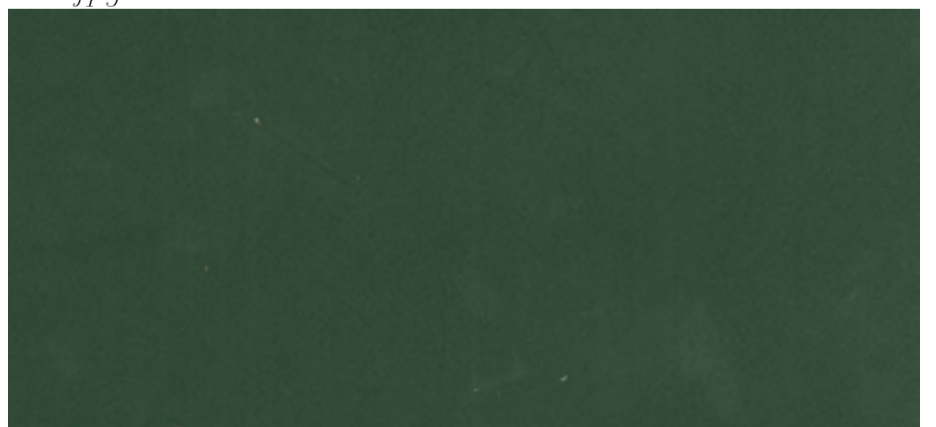
E09.jpg



E12.jpg



E13.jpg



E14.jpg

PELLE / LEATHER CAT. E



E1007.jpg



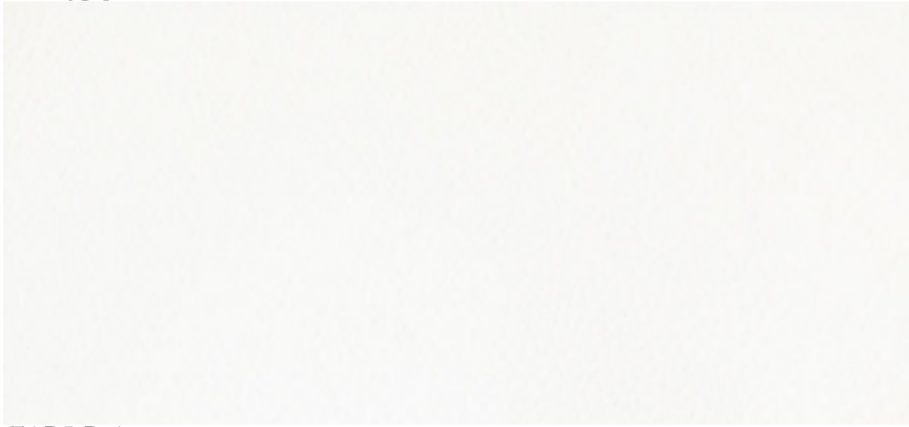
E1010.jpg



E15.jpg



E1500.jpg



E1535.jpg



E17.jpg



E18.jpg



E19 DOLLARO.jpg

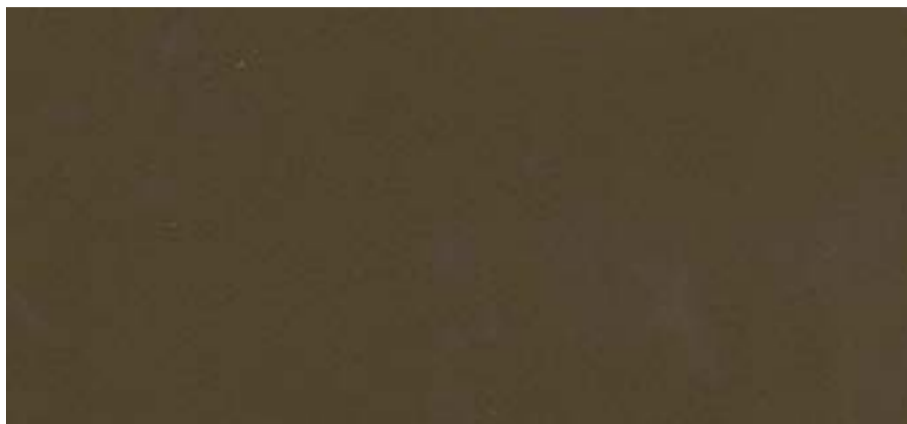


E210.jpg



E28.jpg

PELLE / LEATHER CAT. E



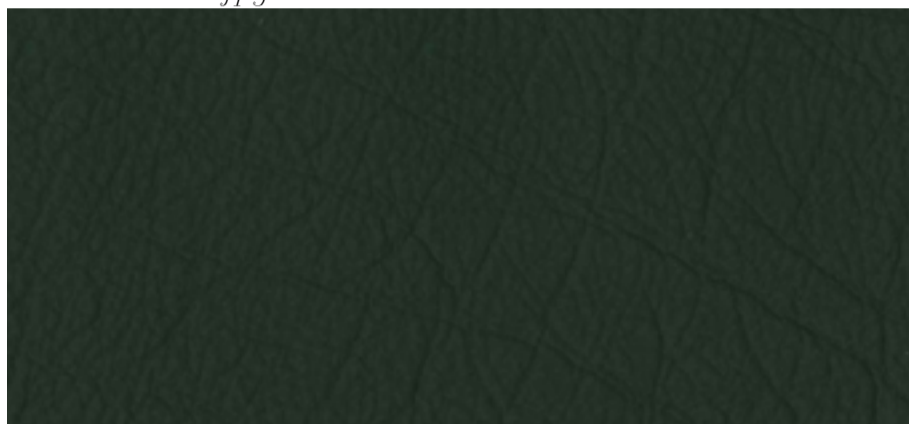
E499.jpg



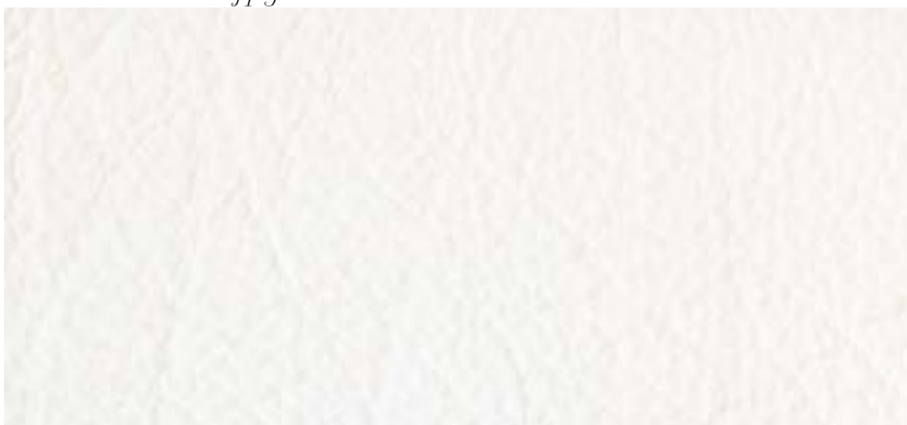
E501BUFALO.jpg



E504BUFALO.jpg



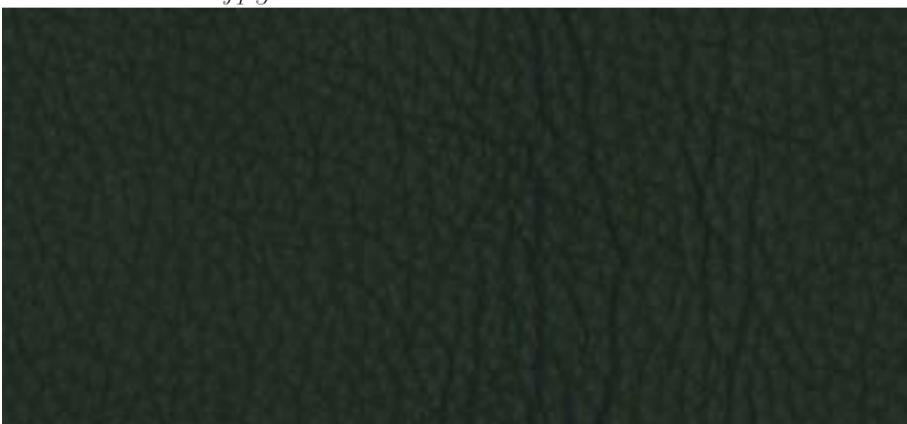
E505BUFALO.jpg



E506BUFALO.jpg



E99866.jpg



EDOLLARO.jpg



EPANNA.jpg

PELLE / LEATHER CAT. F - ULTRASOFT



F92123.jpg



F92126.jpg



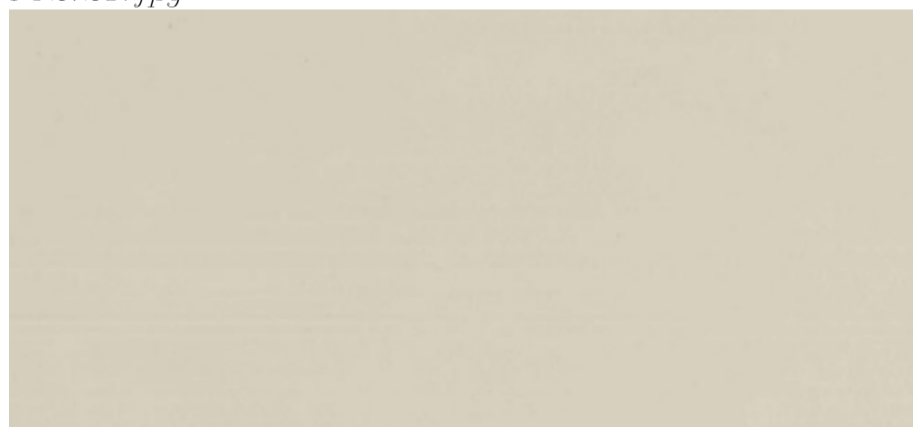
F92127.jpg



F92128.jpg



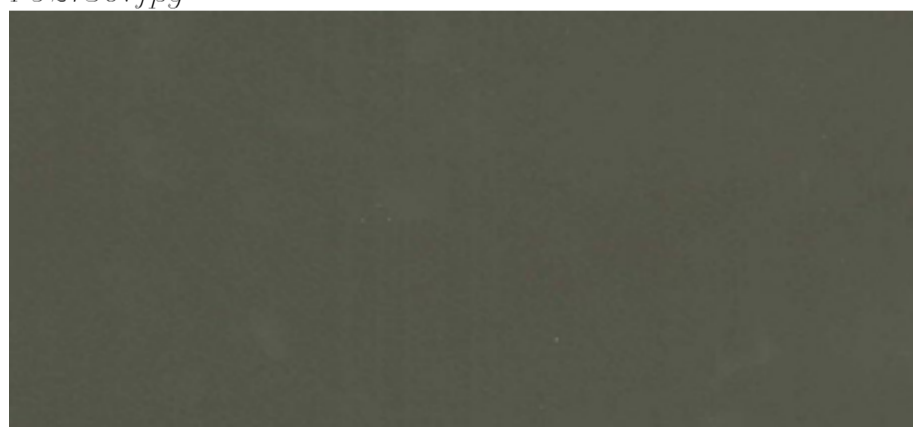
F92129.jpg



F92130.jpg



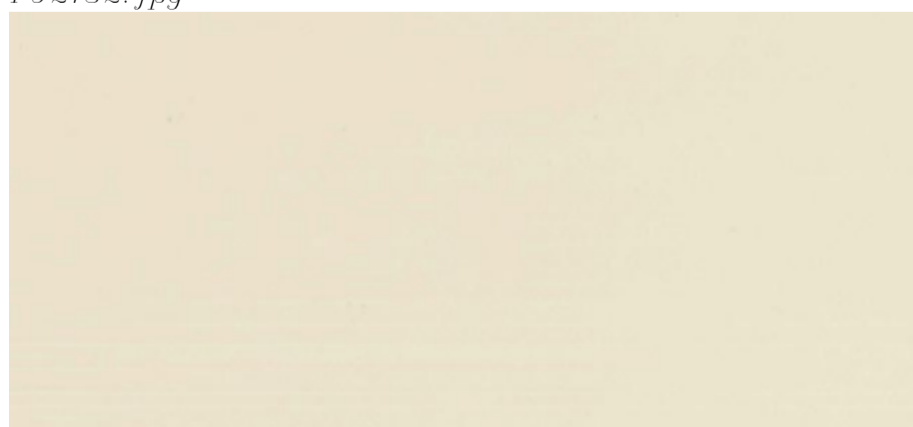
F92131.jpg



F92132.jpg



F92134.jpg

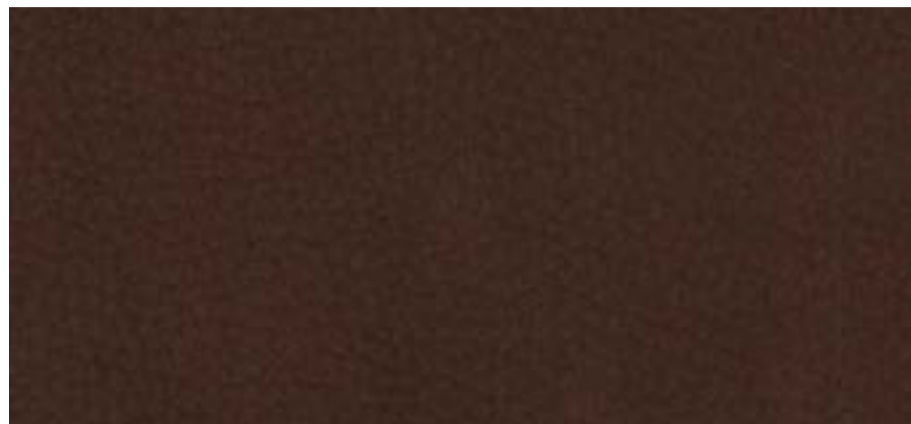


F92135.jpg

PELLE / LEATHER CAT. F - NABUK



NABUKF92108.jpg



NABUKF92109.jpg



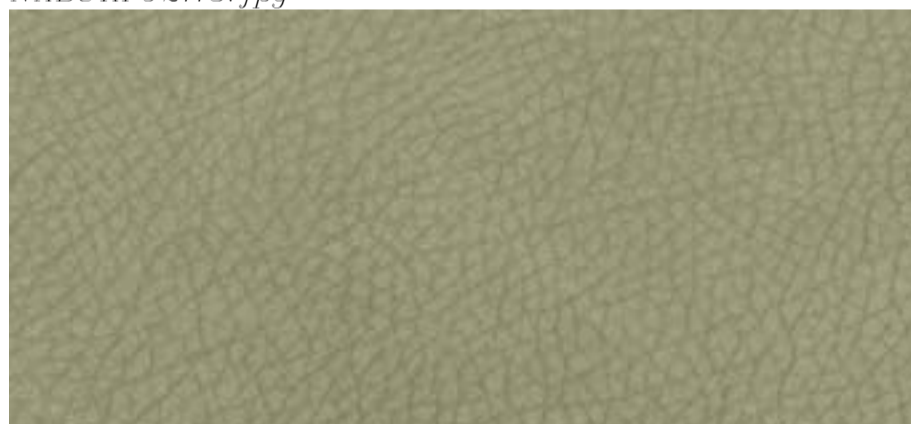
NABUKF92112.jpg



NABUKF92113.jpg



NABUKF92114.jpg



NABUKF92211.jpg



NABUKF92509.jpg



NABUKF92512.jpg



NABUKF92513.jpg

PELLE / LEATHER CAT. F - CERATA / WAX



WAXF92111.jpg



WAXF92115.jpg



WAXF92116.jpg



WAXF92117.jpg



WAXF92118.jpg



Pelle naturale trattata a cera

Natural wax-treated leather

PELLE / LEATHER CAT. F - ANTIQUE



antiqueF92136.jpg



antiqueF92137.jpg



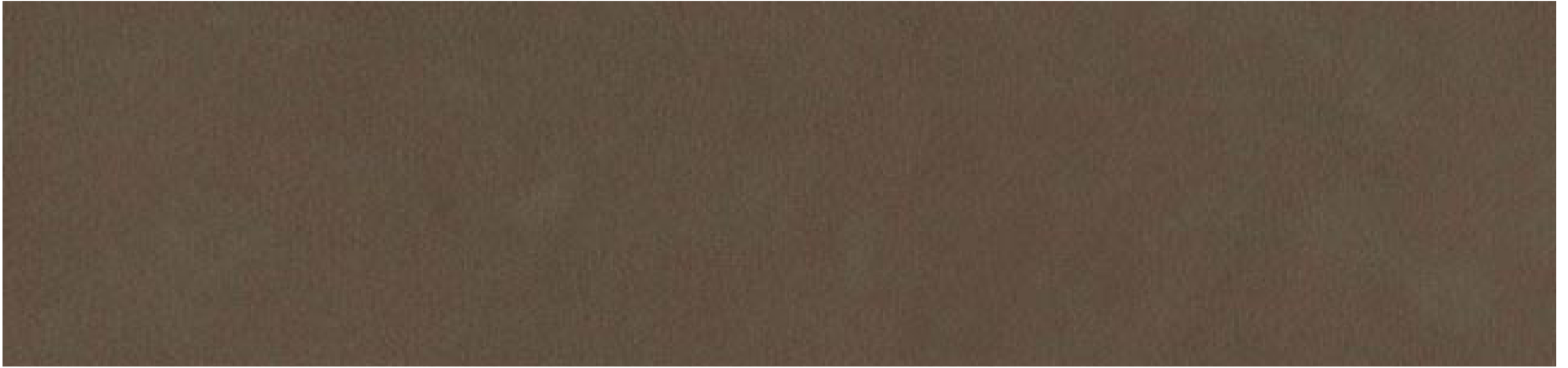
antiqueF92138.jpg



Pelle naturale Liscia effetto invecchiato

Smooth vintage

PELLE / LEATHER CAT. G - TOUCH



touch700.jpg



touch701.jpg



touch702.jpg



touch703.jpg



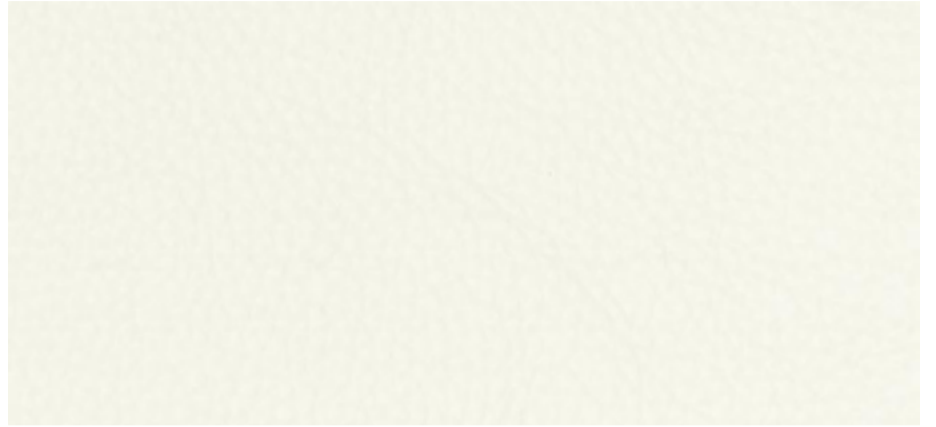
Particolarità di questa pelle è il tatto morbidissimo

Particularity of this leather is a very soft touch, very appealing

PELLE / LEATHER CAT. G - PIUMONE



piumoneG704.jpg



piumoneG705.jpg



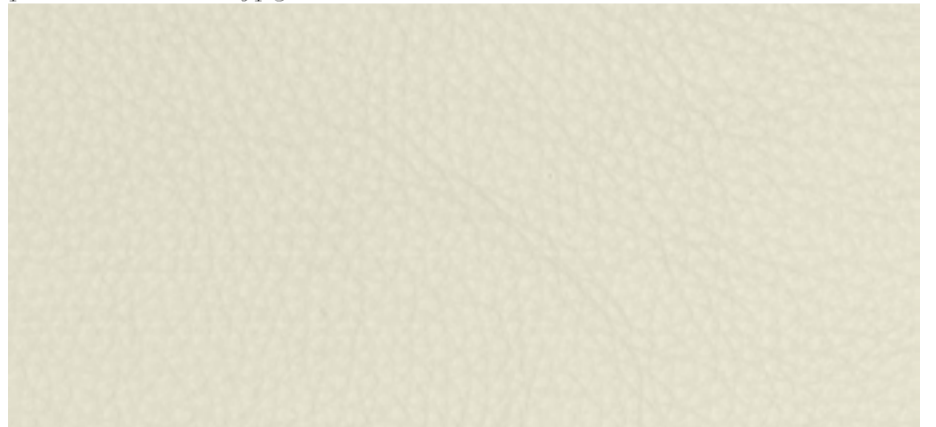
piumoneG706.jpg



piumoneG707.jpg



piumoneG708.jpg



piumoneG709.jpg



Pelle dall'elevato spessore con un tatto e una mano eccellenti

Leather with a high thickness, it has a hand and a feel excellent

PELLE / LEATHER CAT. L - LUXE VINTAGE



vintage403.jpg



vintage404.jpg



vintage405.jpg



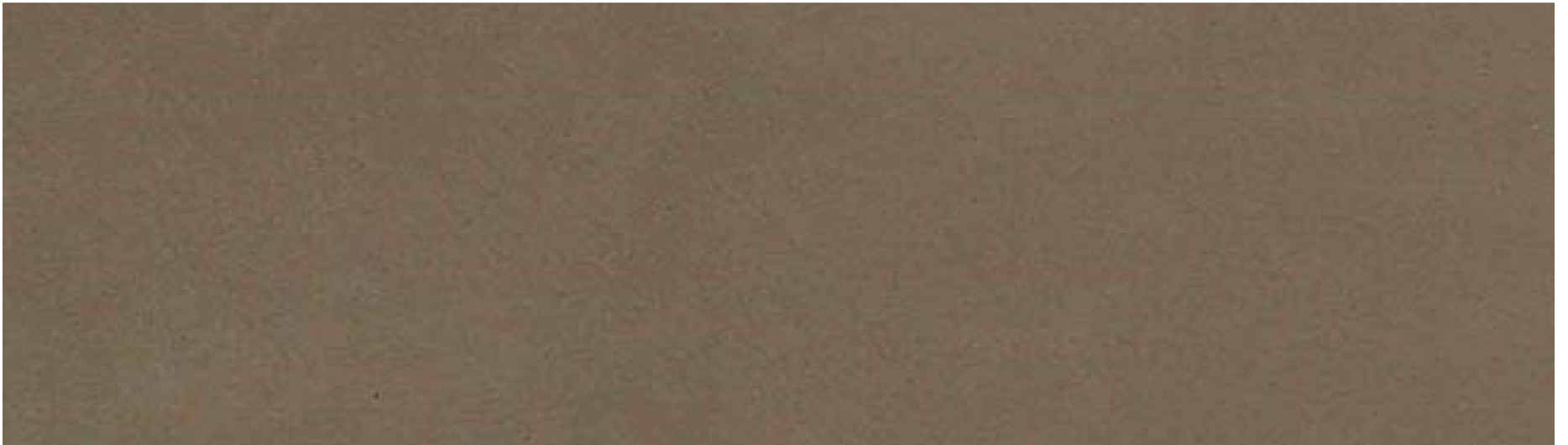
vintage406.jpg



Pelle naturale carteggiata manualmente ad ottenere un effetto “vintage”.

Natural leather manually abraded to obtain a “vintage” effect.

PELLE / LEATHER CAT. L - LUXE SKIN



skin400.jpg



skin401.jpg



skin402.jpg



Particolarità di questa pelle è un aspetto naturale, una mano piena, un tatto velutato e una leggera scrivenza che ne fanno al momento la massima espressione tecnologicamente raggiungibile per un pellame all'anilina.

Particularity of this leather is a natural look, a full hand, a velvety and writing that make these the highest expression technologically achievable for the aniline leather.

CAVALLINO / COW HIDE



PONY-BIANCOMARRONE.jpg



PONY-BIANCONERO.jpg



PONY-NERO.jpg

CUOIO / HIDE



C01.jpg



C09.jpg



C10.jpg



C11.jpg



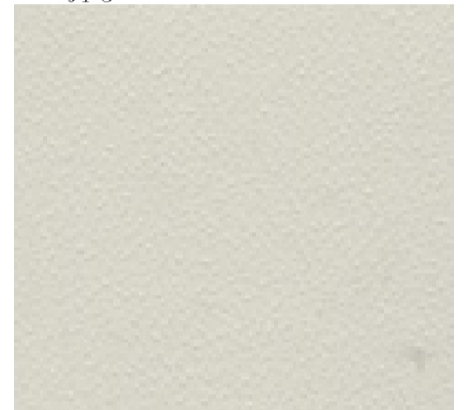
C115.jpg



C16.jpg

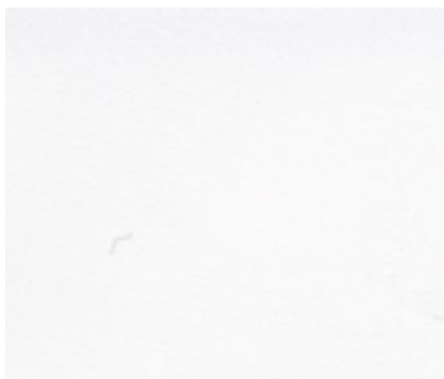


C17.jpg



C23.jpg

CUOIO / HIDE for MVSEVM collection



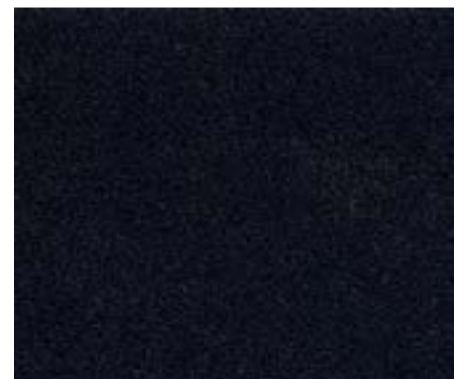
bianco-white.jpg



grigio-grey.jpg



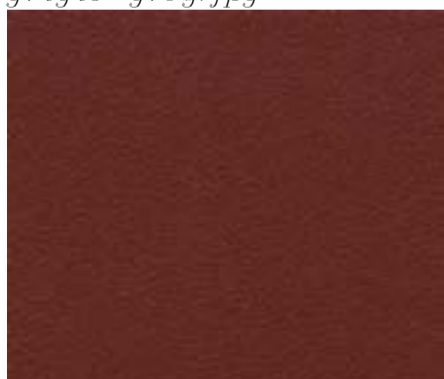
naturale-dark tan hide.jpg



nero-black.jpg



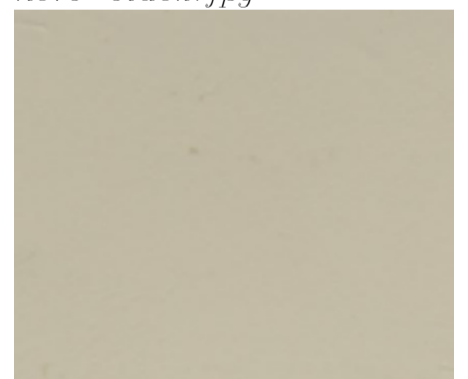
panna-light tan hide.jpg



rossobulgaro-bulgarian red.jpg



rosso-red.jpg



sabbia-sand.jpg



testadimoro-dark brown.jpg

Come si pulisce il rivestimento in pelle ?

Pelle

Per mantenere intatto nel tempo il rivestimento in pelle possono essere effettuate regolarmente delle operazioni di pulizia e manutenzione. Pulire regolarmente la poltrona con acqua e sapone neutro e stendere in maniera uniforme su tutta la superficie in pelle della crema nutriente, in quanto la crema satura la pelle ritardando l'assorbimento delle macchie. Non usare stracci in microfibra perché rimuovono il grasso e possono danneggiare la pelle. Consigliamo di usare la crema nutriente una o due volte all'anno (ogni volta che la pelle risulta secca). Per rimuovere eventuali macchie usare un fazzoletto di carta o un panno di cotone. Non strofinare. Premere un panno contro la macchia per assorbire il grasso ed usare un detergente delicato sciolto nell'acqua per rimuovere eventuali aloni.

Pelle cerata

Per rimuovere eventuali macchie dalla pelle cerata usare un panno pulito imbevuto di una soluzione di acqua al 90% e sapone neutro non colorato al 10%. Strofinare delicatamente e asciugare con un altro panno morbido asciutto e pulito.

Pelle nabuk

Spolverare periodicamente con un panno bianco pulito, asciutto e non abrasivo. In caso di macchie da sostanze solubili in acqua (bibite, caffè, tè, latte, marmellata): rimuovere rapidamente il liquido dalla superficie tamponando con un panno bianco (o carta assorbente) non abrasivo. Successivamente con un panno pulito imbevuto d'acqua, strofinare delicatamente dall'esterno verso l'interno della macchia. Asciugare immediatamente con un panno pulito. Non inzuppare la superficie della pelle ed asciugare immediatamente con un panno asciutto.

Cavallino

Per mantenere il pelo pulito, spazzolarlo di tanto in tanto con una spazzola morbida nel senso del pelo. Per rimuovere eventuali macchie usare un panno di cotone imbevuto in acqua e sapone neutro e strofinare delicatamente sempre nel senso del pelo, tamponare poi con panno assorbente.

How do I clean leather upholstery?

Leather

In order to maintain the inherent features of leather upholstery regular cleaning and care treatments are necessary. Regularly wash the armchair with water and neutral soap and then apply a coating of nourishing cream on the entire surface of the same, as the cream acts to saturate the leather and delays any stain absorption. Do not use micro-fibre cloths as they may remove the grease and damage the leather itself. We recommend that this nourishing cream be used once or twice a year (or whenever the leather appears to be dry). To remove any stains use a paper tissue or cotton cloth. Do not rub. Press the cloth against the stain to absorb the grease and use a delicate detergent dissolved in water to remove any rings.

Waxed Leather

To remove any stains from waxed leather use a clean cloth soaked with a solution of 90% water and 10% transparent neutral soap. Rub gently and dry with a soft. Dry cloth.

Nabuk leather

Dust down occasionally using a clean white cloth, that must be dry and non-abrasive. In the event of stains caused by water soluble substances (beverages, coffee, tea. Milk, jam); rapidly remove the liquid from the surface mopping up with a white cloth soaked in water, rub gently from outside to the inside using a clean cloth. Do not soak the leather surface and immediately dry with a dry cloth.

Pony hide

To keep the hide clean, brush occasionally using a soft brush in the direction of the hide hair, To remove any stains use a cotton cloth soaked in water with a neutral soap and rub gently always in the sense of the hide hair, and then mop with an absorbent cloth.

ALIVAR

Tessuti / Fabrics

Tessuti

Fabrics

Tazio Secchiaroli

**Federico
Fellini**

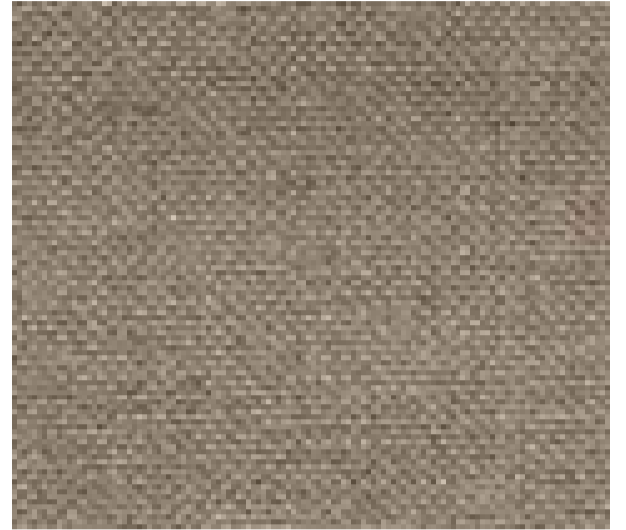
CANAPA / CANVAS CAT. A



NATURE.jpg



NERA.jpg

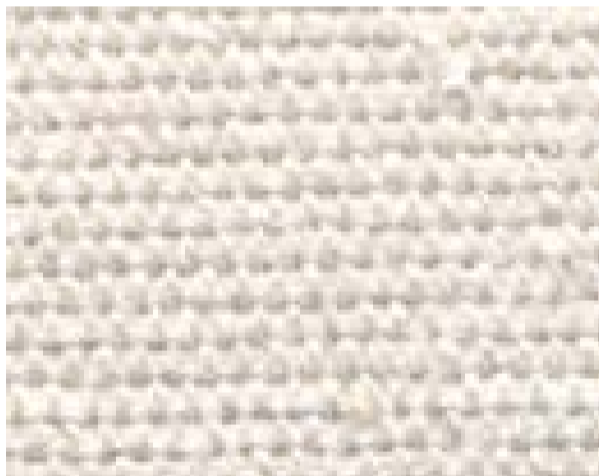


RURALE.jpg

TESSUTI / FABRICS CAT. B



B3075.jpg



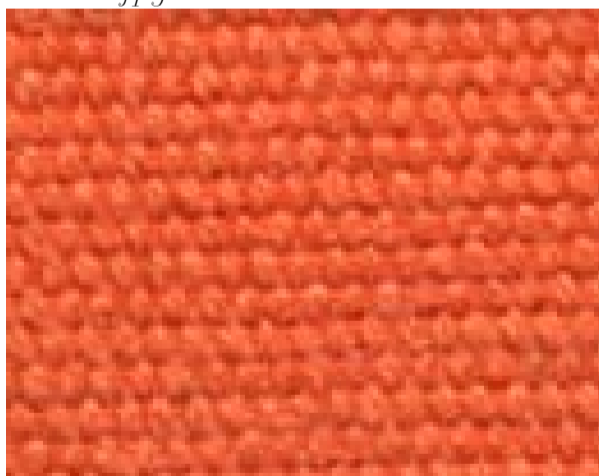
B3076.jpg



B3077.jpg



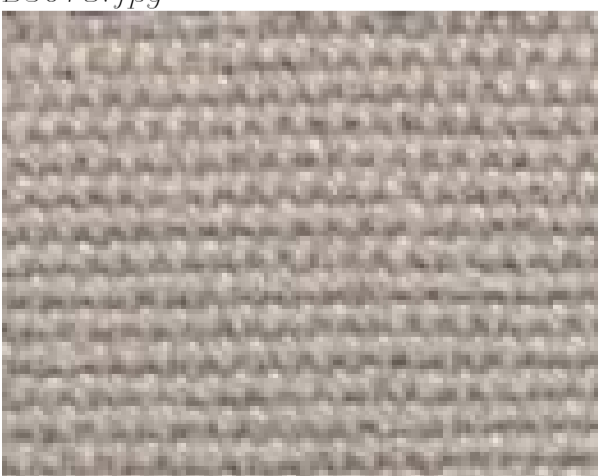
B3078.jpg



B3079.jpg



B3080.jpg



B3081.jpg



B3082.jpg



B3083.jpg

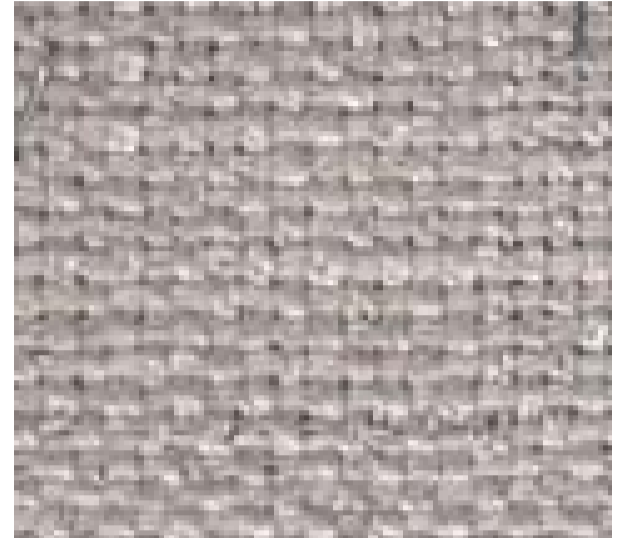
TESSUTI / FABRICS CAT. B



B3084.jpg



B3085.jpg



B3086.jpg

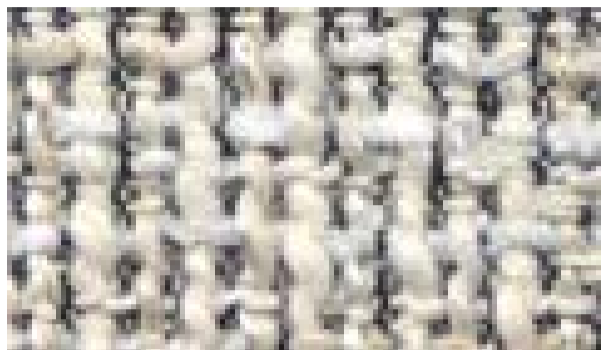


B3087.jpg



B3088.jpg

TESSUTI / FABRICS CAT. C



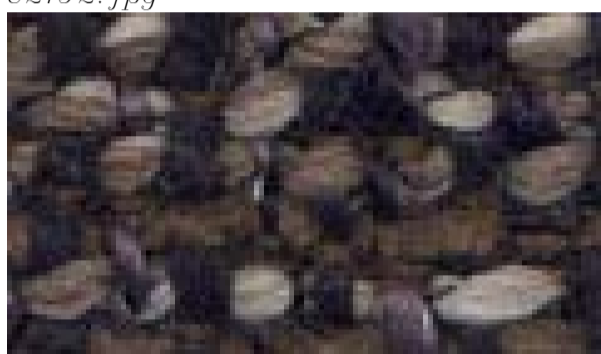
C2192.jpg



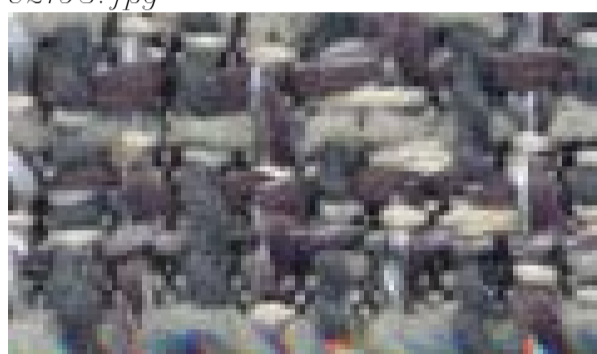
C2193.jpg



C2194.jpg



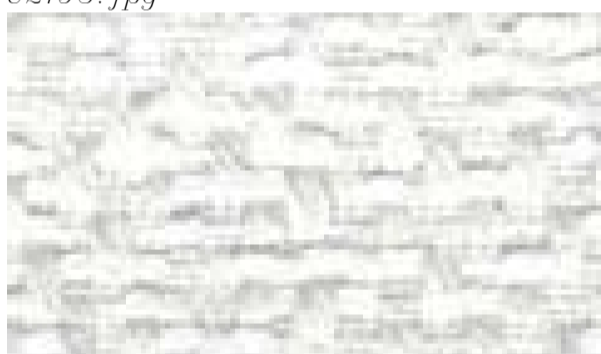
C2195.jpg



C2196.jpg



C2197.jpg



C2265.jpg



C2266.jpg



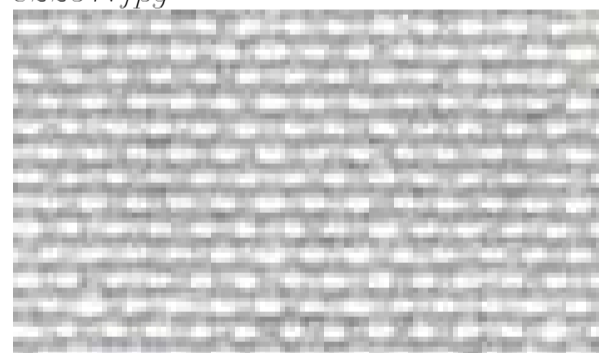
C2267.jpg



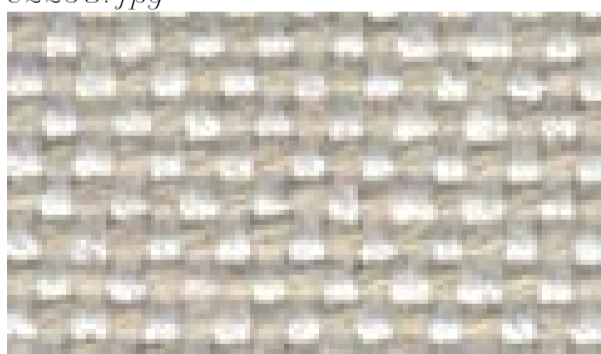
C2268.jpg



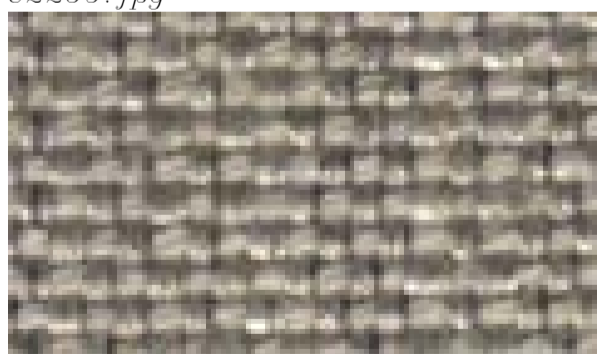
C2269.jpg



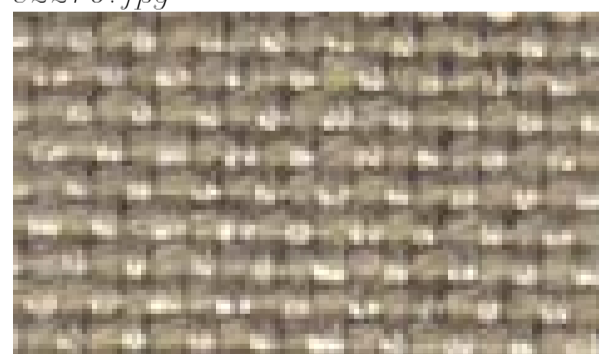
C2270.jpg



C2271.jpg



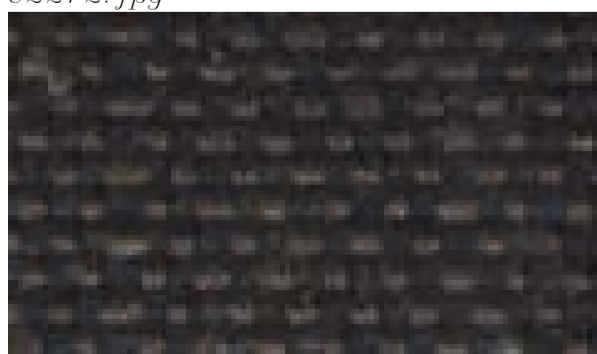
C2272.jpg



C2273.jpg



C2274.jpg



C2275.jpg



C2276.jpg

TESSUTI / FABRICS CAT. D



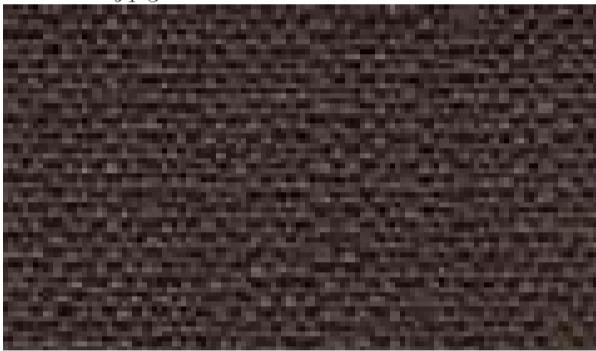
D5032.jpg



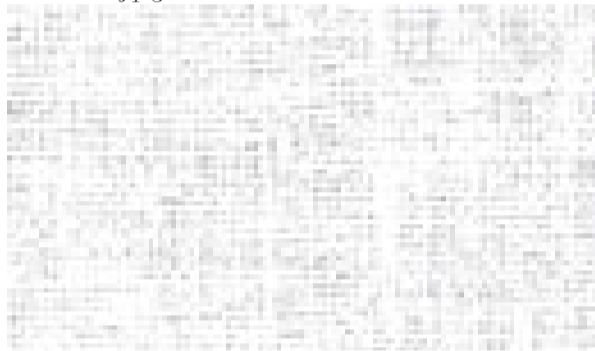
D5033.jpg



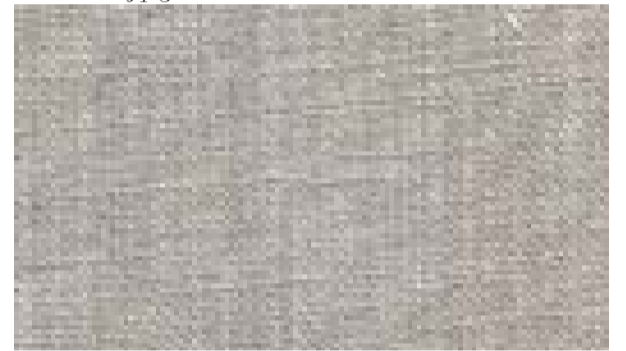
D5034.jpg



D5035.jpg



D5048.jpg



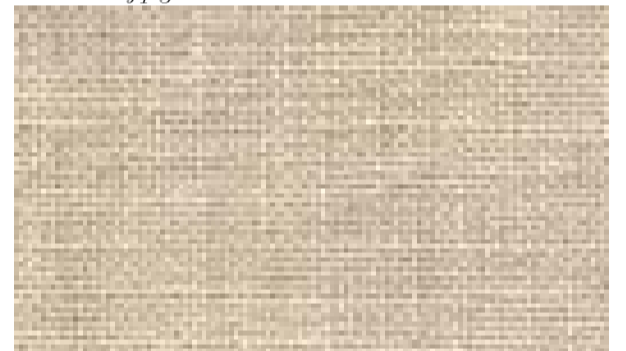
D5049.jpg



D5050.jpg



D5051.jpg



D5052.jpg



D5053.jpg



D5054.jpg



D5055.jpg



D5067.jpg



D5068.jpg



D5069.jpg



D5070.jpg



D5071.jpg



D5072.jpg

TESSUTI / FABRICS CAT. D



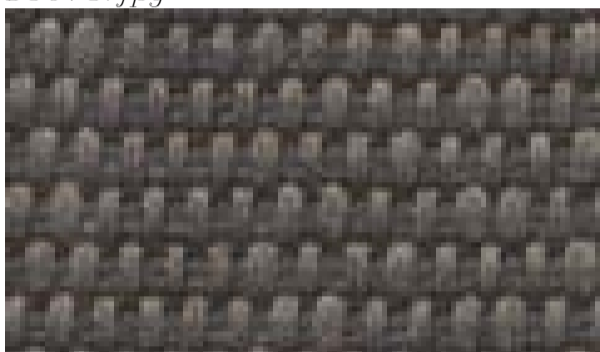
D5073.jpg



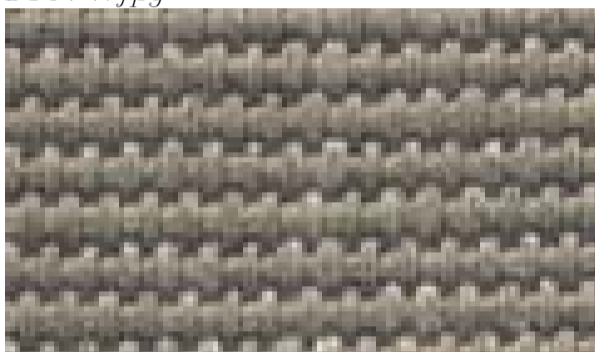
D5074.jpg



D5075.jpg



D5076.jpg



D5077.jpg



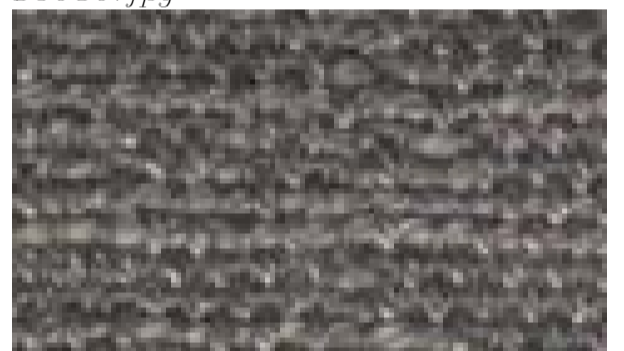
D5080.jpg



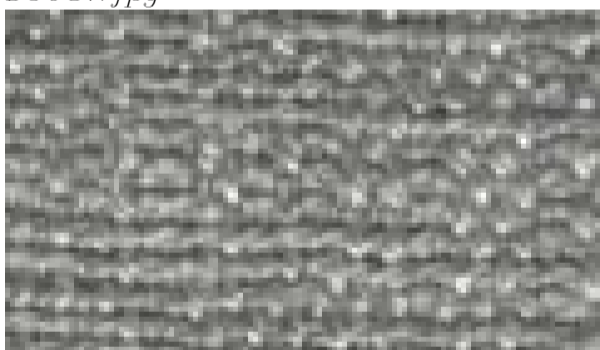
D5081.jpg



D5082.jpg



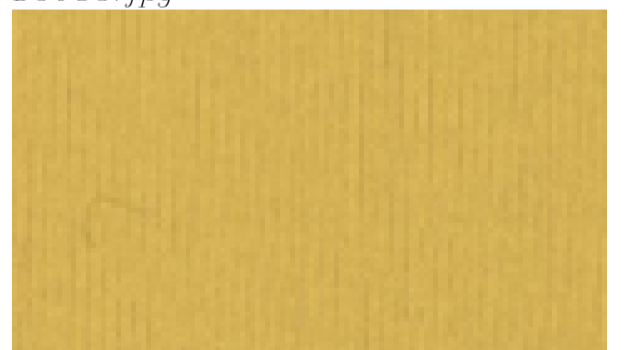
D5083.jpg



D5084.jpg



D5085.jpg



D5086.jpg



D5087.jpg



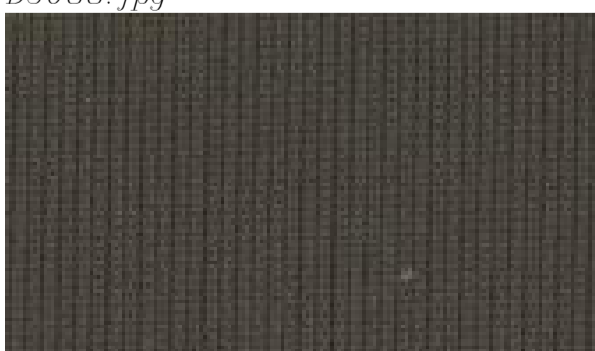
D5088.jpg



D5089.jpg



D5090.jpg



D5091.jpg



D5092.jpg

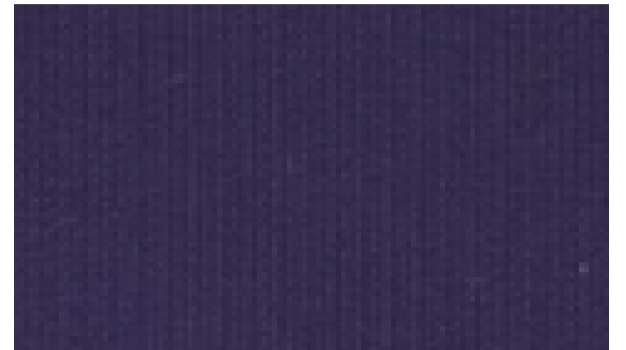
TESSUTI / FABRICS CAT. D



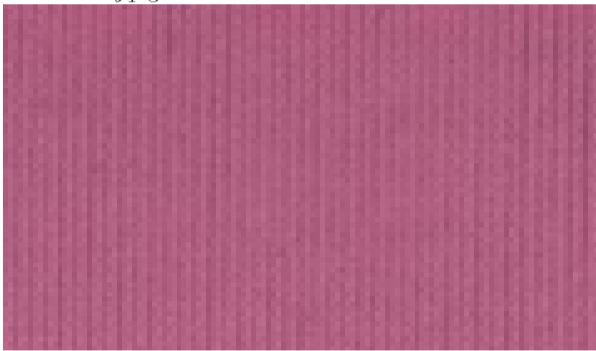
D5093.jpg



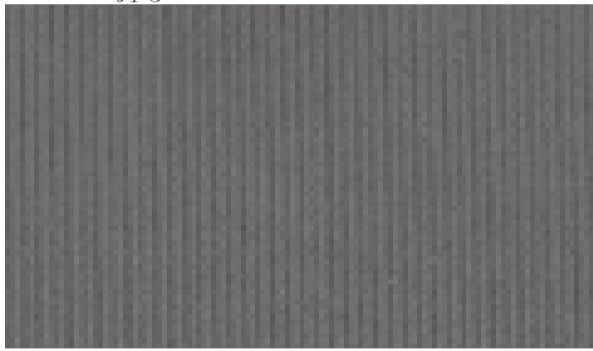
D5094.jpg



D5095.jpg



D5096.jpg



D5097.jpg



D5099.jpg



D5100.jpg



D5102.jpg



D5103.jpg

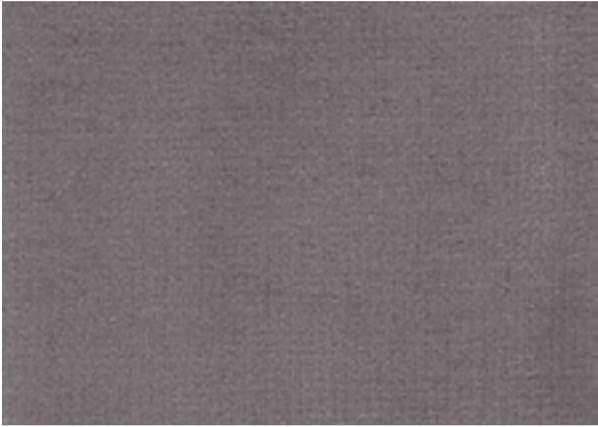


D5115.jpg



D5117.jpg

VELLUTI / VELVET CAT. D



D 5107.jpg



D 5119.jpg



D5106.jpg



D5108.jpg



D5109.jpg



D5110.jpg

TESSUTI / FABRICS CAT. K



K6030.jpg



K6031.jpg



K6032.jpg



K6033.jpg



K6034.jpg



K6035.jpg

ECOPELLE / SYNTHETIC LEATHER CAT. B



B2066.jpg



B2067.jpg



B3057.jpg



B3069.jpg



B3070.jpg



B3071.jpg



B3072.jpg



B3073.jpg



B3074.jpg

ECOPELLE / SYNTHETIC LEATHER CAT. C



C2227.jpg



C2228.jpg



C2229.jpg



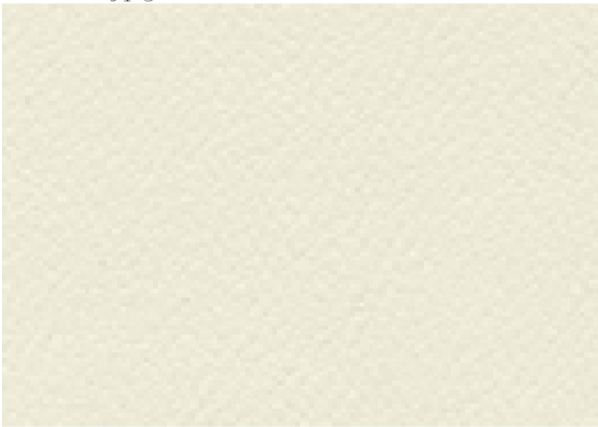
C2230.jpg



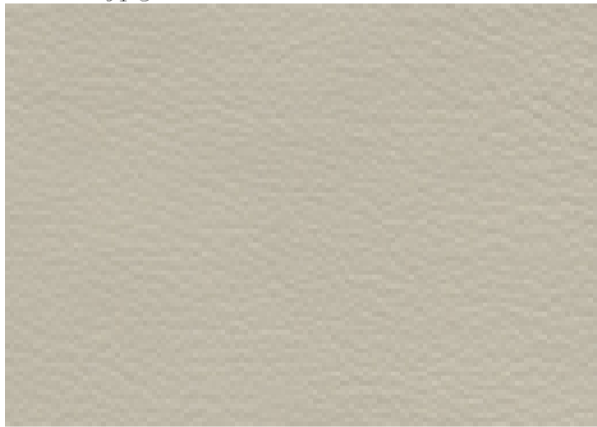
C2231.jpg



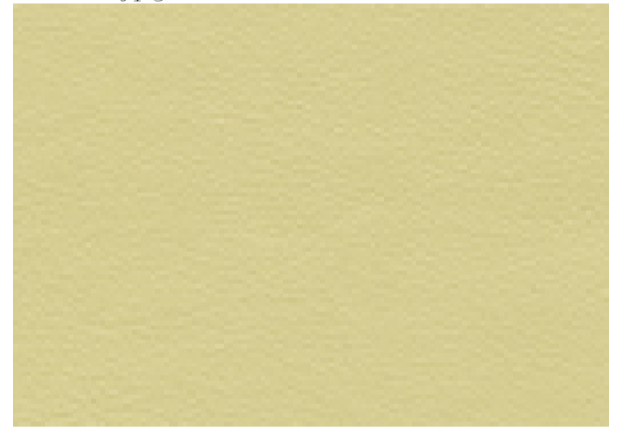
C2246.jpg



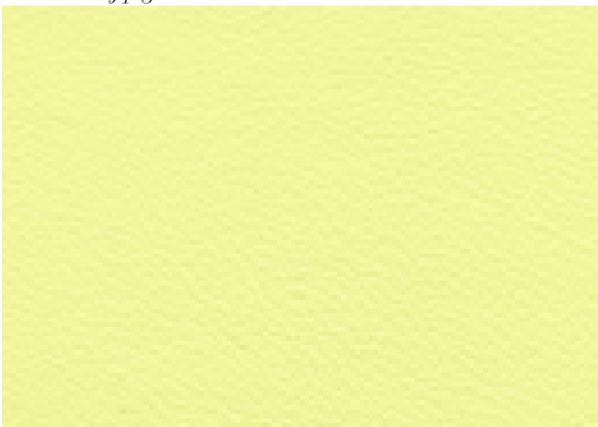
C2247.jpg



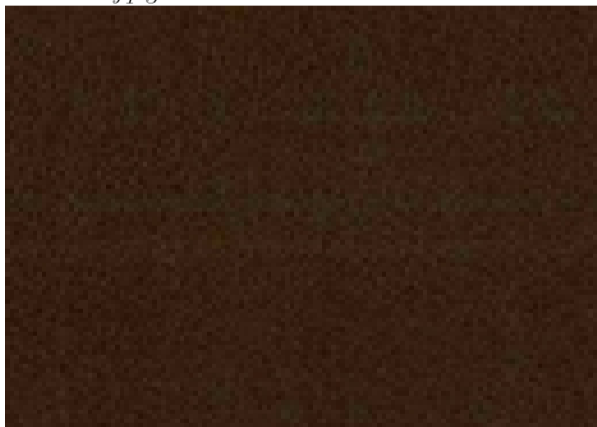
C2248.jpg



C2249.jpg



C2250.jpg



C2251.jpg



C2252.jpg

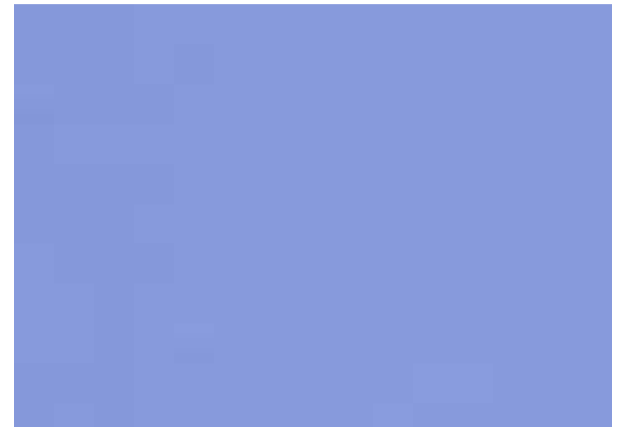
ECOPELLE LUCIDE / GLOSSY SYNTHETIC LEATHER CAT. C



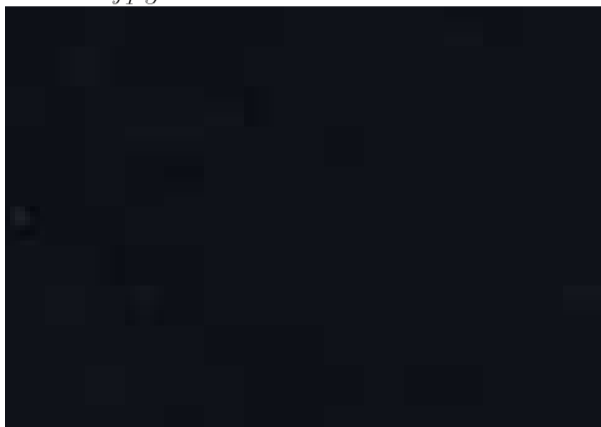
C2232.jpg



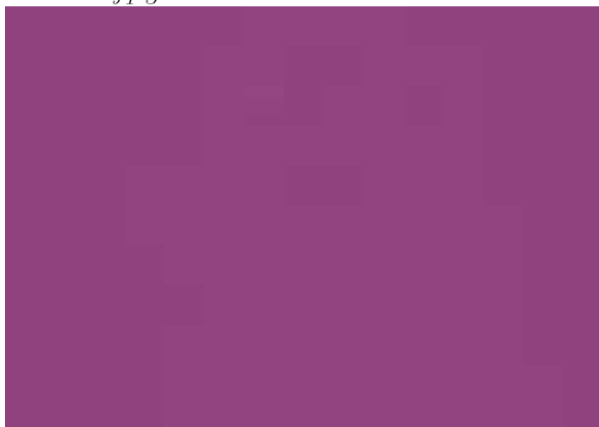
C2233.jpg



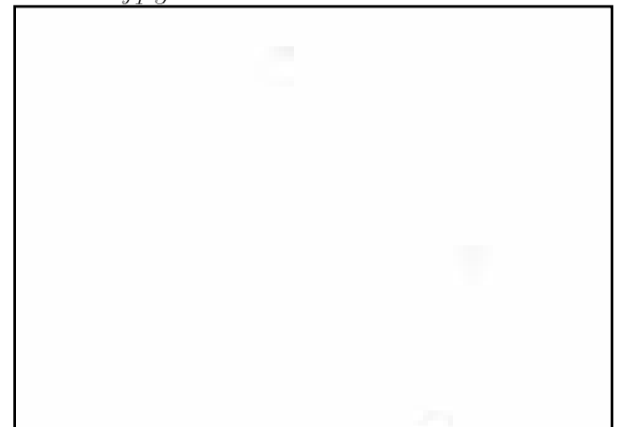
C2234.jpg



C2235.jpg



C2236.jpg



C2237.jpg

ALIVAR

Materiali / Materials

Materiali

Materials

LACCATURE PER LEGNO / WOOD LACQUERS



04.84_crema-cream.jpg



05.15_caffè-coffee brown.jpg



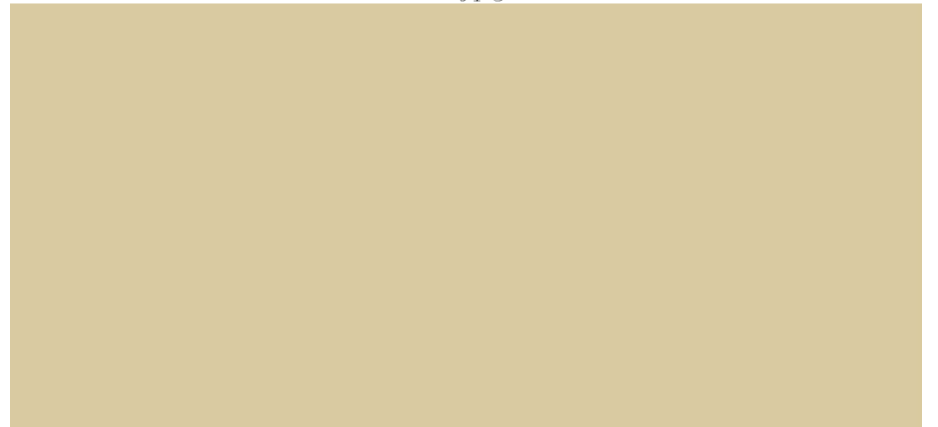
05.60_grigio-grey.jpg



05.70_tortora-dove brown.jpg



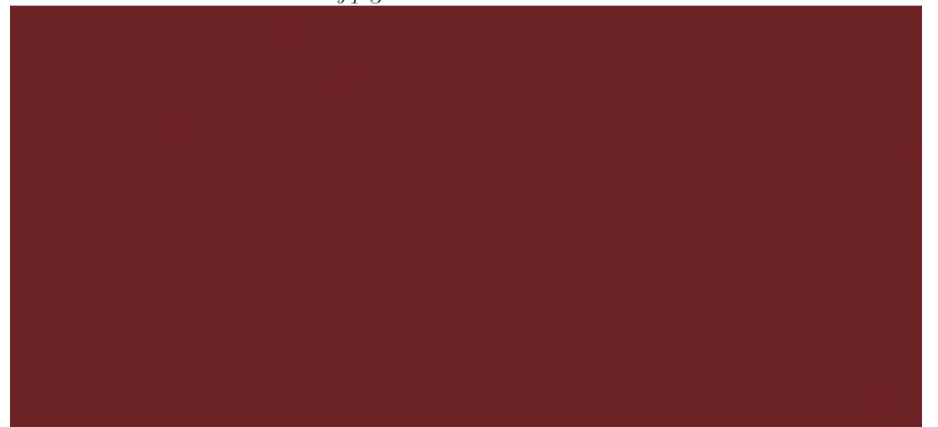
10.60_corda-rope.jpg



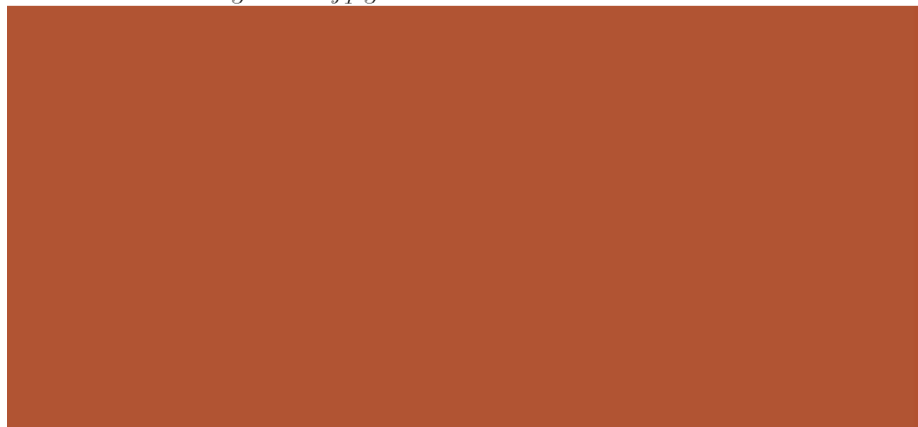
15.65_sabbia-sand.jpg



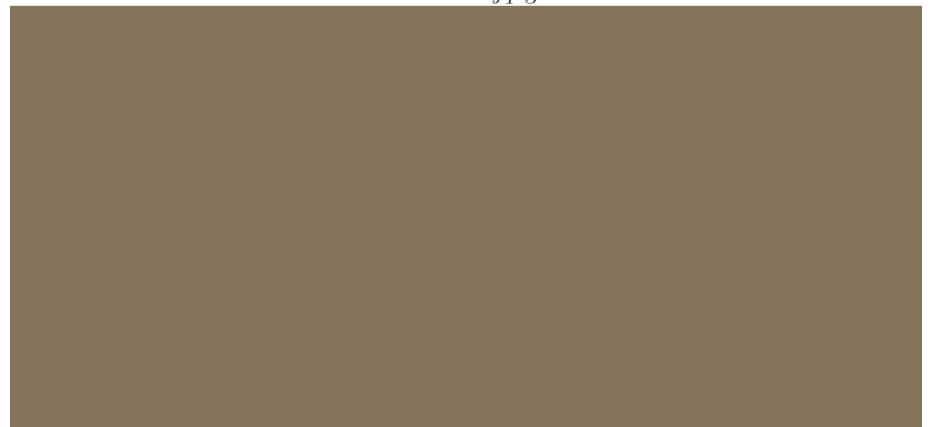
20.50_verde-green.jpg



40.20_rosso scuro-dark red.jpg



50.40_aragosta-lobster.jpg



RAL7006_castoro-beaver_.jpg

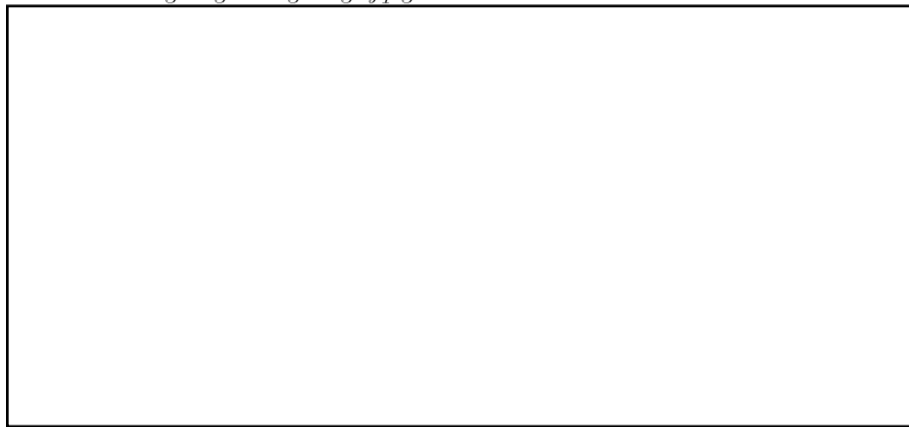
LACCATURE PER LEGNO / WOOD LACQUERS



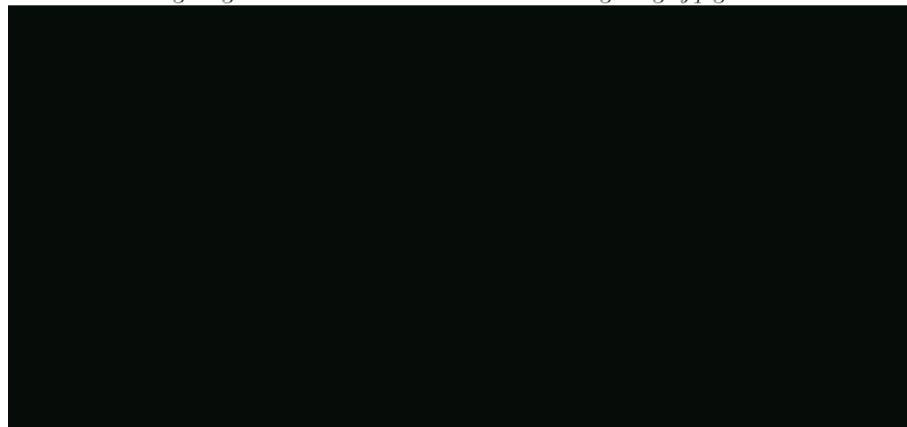
RAL7012_grigio-grey.jpg



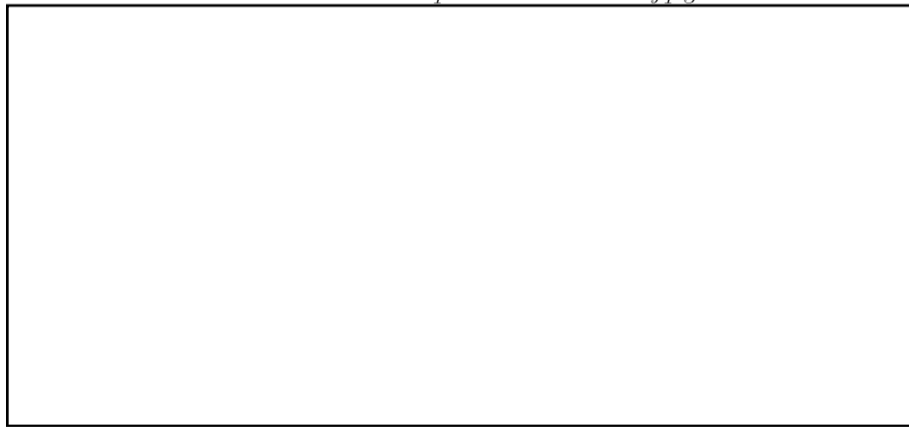
RAL7038_grigio cemento-concrete grey.jpg



RAL9003_bianco ottico-optical white.jpg



RAL9005_nero-black.jpg

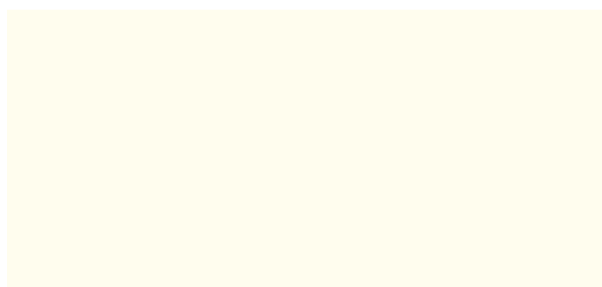


RAL9016_bianco-white.jpg

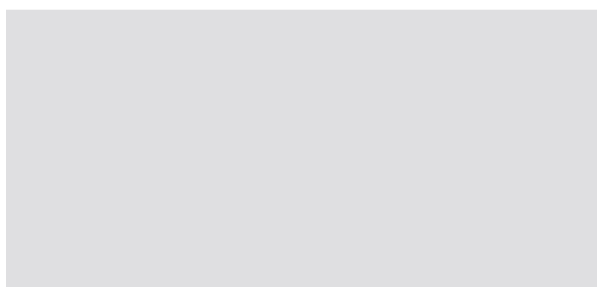


bronzo-brown-50.jpg

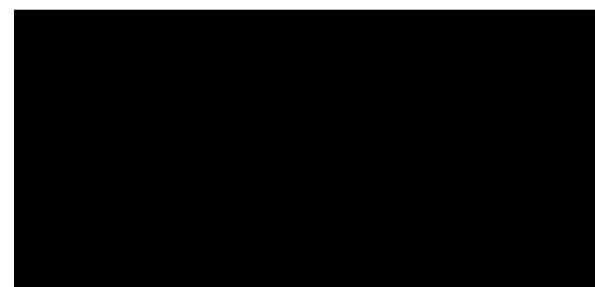
LAMINATO LIQUIDO / LIQUID LAMINATE



bianco - white.jpg



grigio - grey.jpg



nero - black.jpg



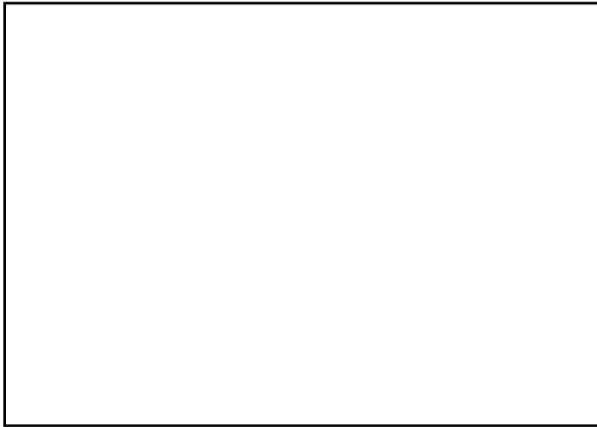
Il “laminato liquido” è una vernice con caratteristiche particolari di resistenza al graffio e idrorepellente. Il prodotto è stato studiato e formulato con l'utilizzo di resine particolari e microsferi omogenee selezionate di alta durezza.

“Liquid laminate paint” is a special paint with scratch-proof characteristics. The product was conceived and formulated with the use of special resins and very hard selected, homogeneous microspheres.

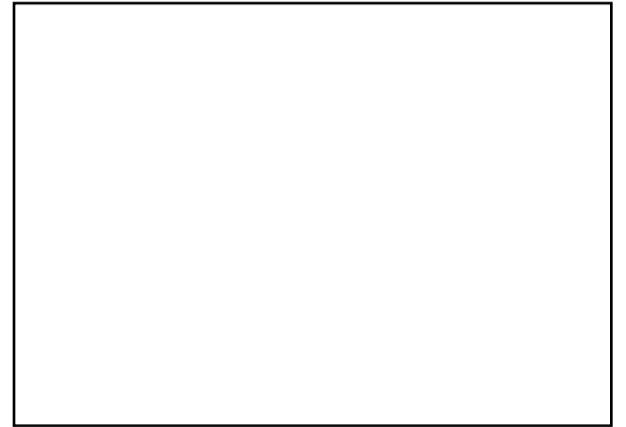
LACCATURE E FINITURE PER METALLO / STEEL LACQUERS AND FINISHES



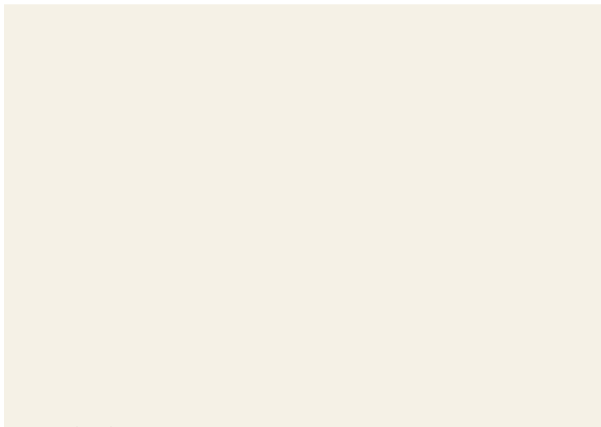
romo-chrome-plated.jpg



RAL9003_biancoottico-opticalwhite.jpg



RAL9016_bianco-white.jpg



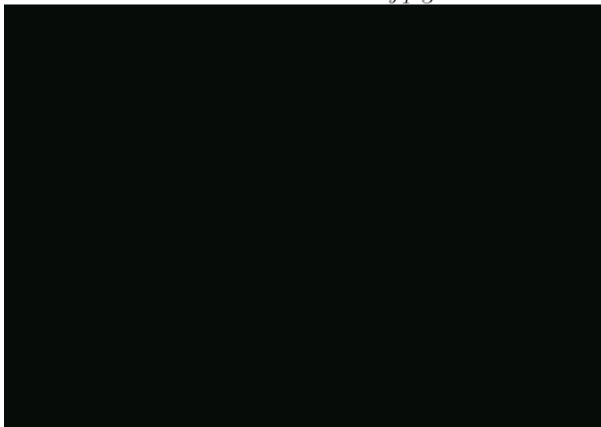
RAL1013_crema-cream.jpg



RAL7006_castoro-beaver_.jpg



alluminio-romo-alu-chrome.jpg



RAL9005_nero-black.jpg

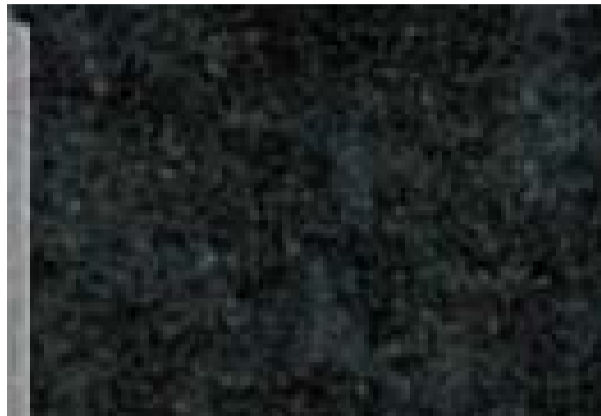


nero-goffrato-embossed-black.jpg



alluminio goffrato.jpg

MARMI E PIETRE / MARBLES AND STONES



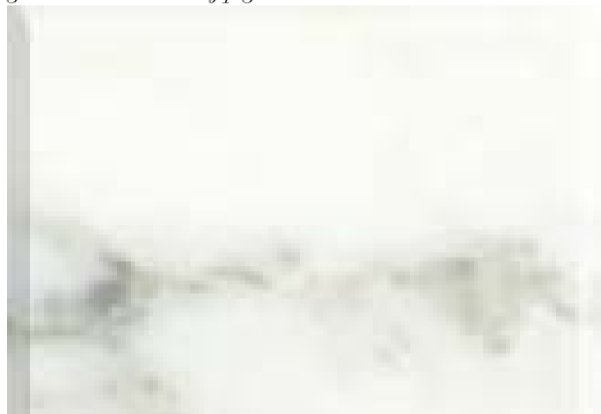
granitonero.jpg



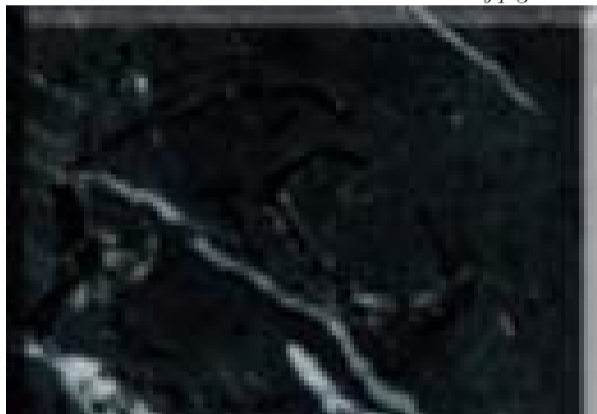
marmo_bianco_calacattaoro.jpg



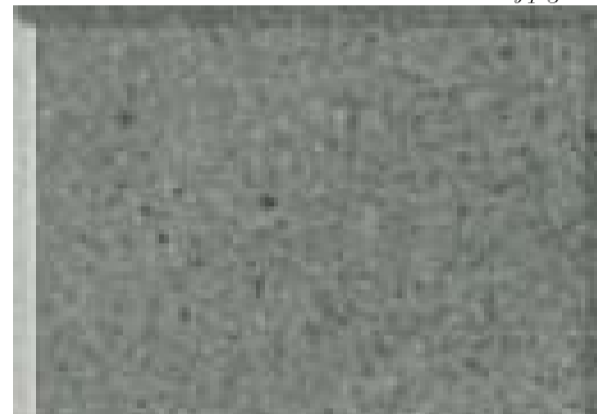
marmo_bianco_cristallizzato.jpg



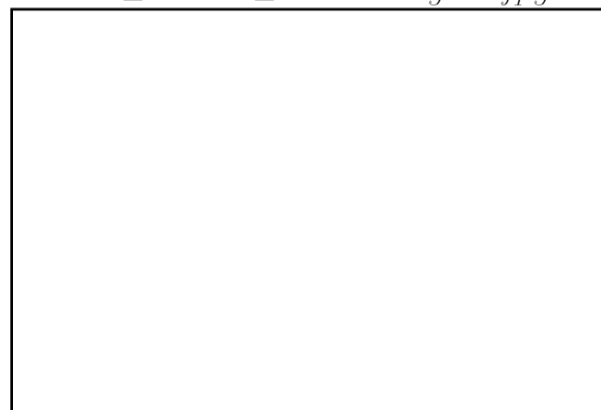
marmo_bianco_michelangelo.jpg



marmo_nero_marquinia.jpg



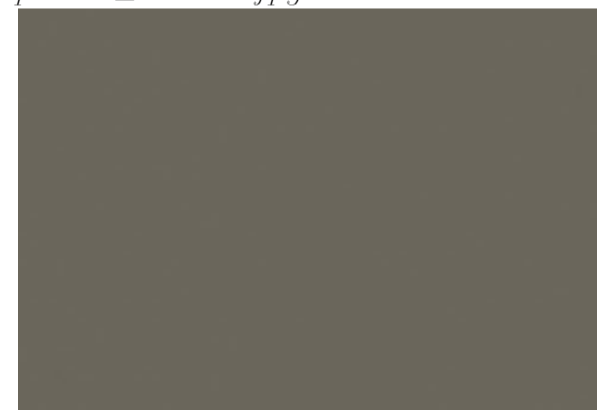
pietra_serena.jpg



S28 bianco-white.jpg



S100 caffè-coffee.jpg



S101 verde-green.jpg



Marmo cristallizzato crystallized marble

Il marmo cristallizzato è un materiale nuovo composto da fibre di cristallo e marmo, prodotto con una tecnica simile alla lavorazione del vetro, che gli permette di avere un assorbimento quasi inesistente ed una brillantezza perfetta. Tutta la lastra è omogenea e uguale senza venature e senza differenza di colore ed è molto resistente al graffio.

Crystallized marble is a new material, consisting of crystal and glass fibre, produced with a technique similar to that of the glass processing, allowing it to have a nearly inexistent absorption as well as a perfect brilliance. The whole plate is homogeneous and uniform with no veining and without colour differences and is very scratch-resistant.

Pietra acrilica acrylic stone

Materiale composito di alto pregio, duraturo e resistente, non assorbente e non poroso. Ecologico, assolutamente impermeabile, non cambia colore nel tempo. È igienico perché non poroso.

Acrylic stone of high quality, durability and resistance, as well as non absorbent and non porous. Ecological and absolutely water proof. Colour doesn't change over time. Hygienic because it's not porous.

ESSENZE / WOOD



rovere_oak CAPPUCINO.jpg



rovere_oak GRIGIO.jpg



rovere_oak NERO.jpg



rovere_oak SBIANCATO.jpg



rovere_oak TERMOTRATTATO.jpg



rovere_oak WENGE'.jpg



ebano_ebony.jpg

ESSENZE / WOOD - collezione MVSEVM



acero-maple.jpg



betulla-birch.jpg



ciliegio-cherry.jpg



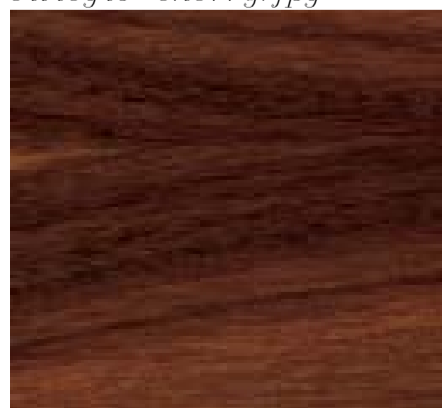
faggionaturale-naturalbeech.jpg



frassinonaturale-naturalash.jpg



frassino nero-black ash.jpg



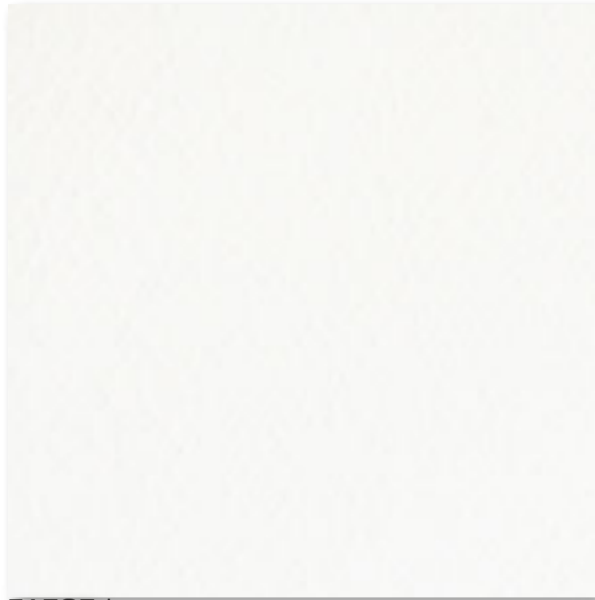
palissandro-rosewood.jpg



Matching
Colours

01

bianco_white



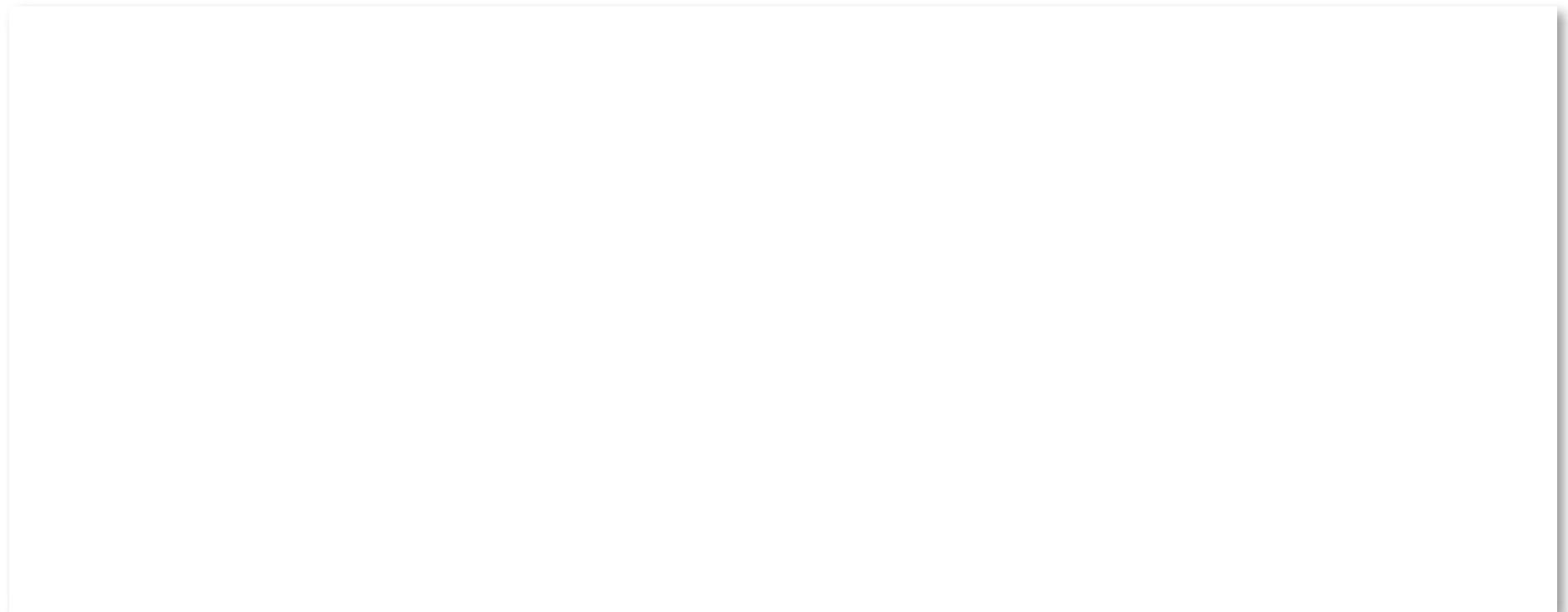
E1535.jpg



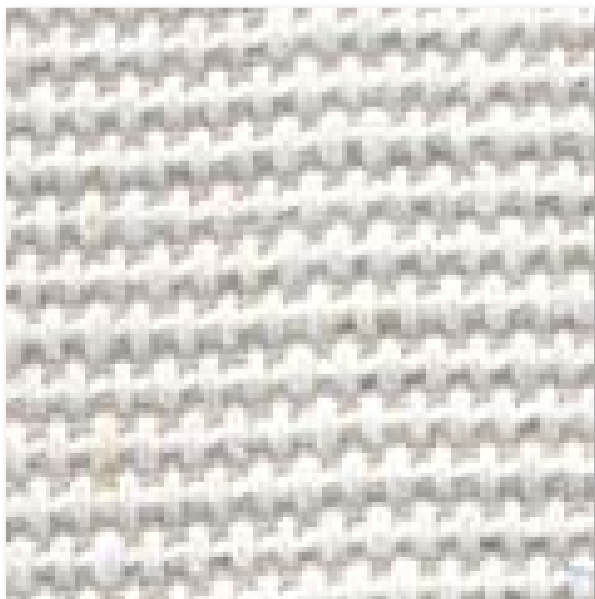
D5067.jpg



piemoneG705.jpg



RAL9003_bianco ottico-optical white.jpg



D5073.jpg



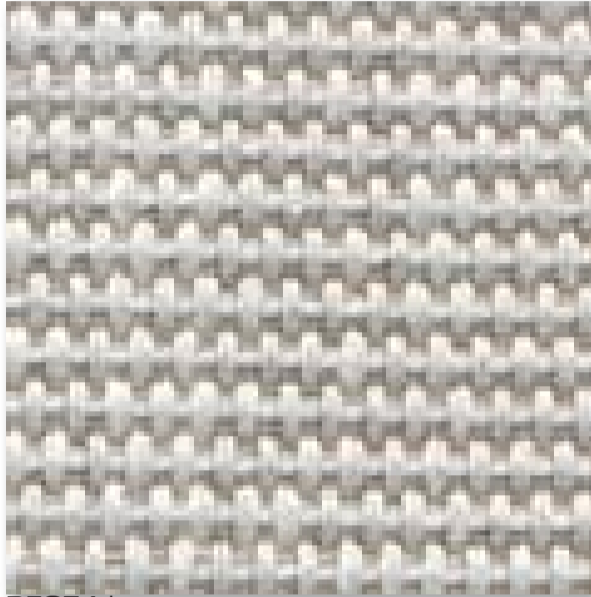
C10.jpg

02

crema_cream



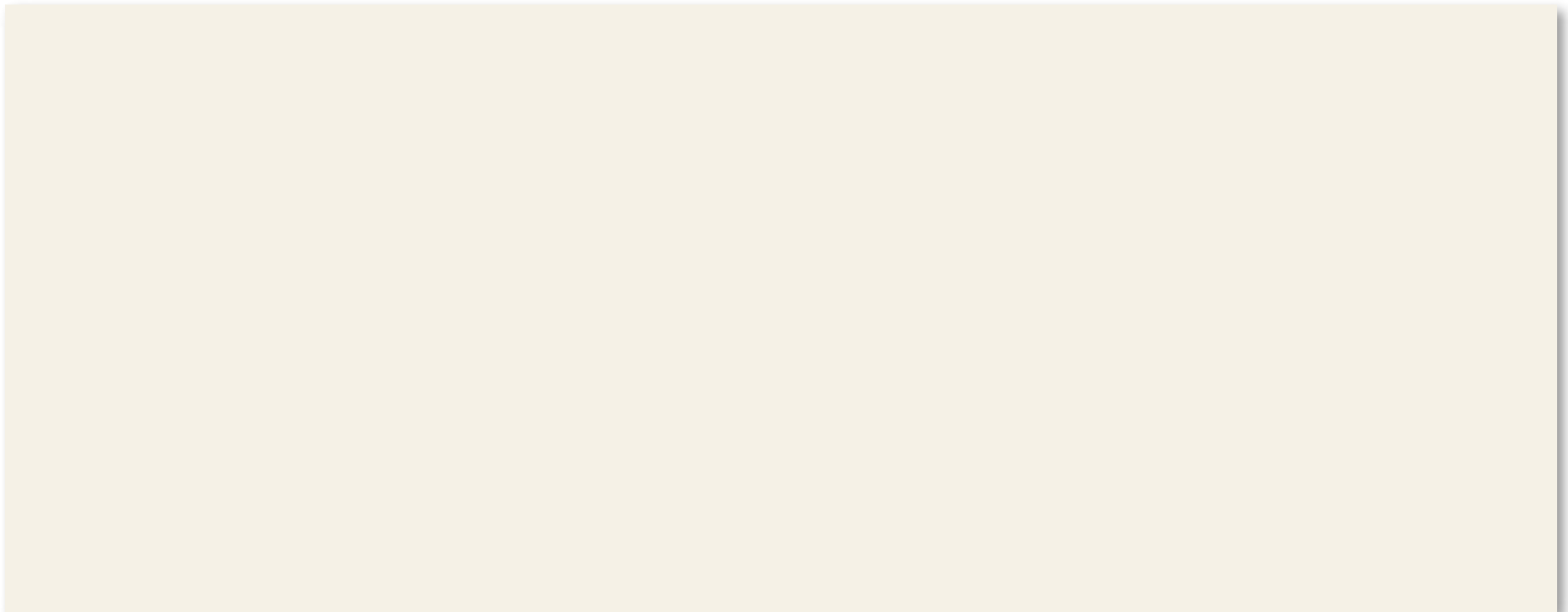
E15.jpg



D5074.jpg



piumoneG709.jpg



O4.84_crema-cream.jpg



C23.jpg



D5068.jpg

03

sabbia_sand



F92129.jpg



D5033.jpg



piumoneG704.jpg



rovere_oak SBIANCATO.jpg



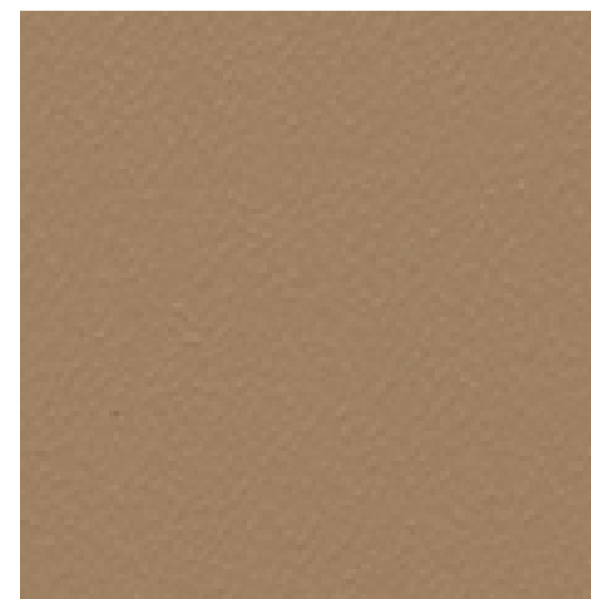
15.65_sabbia-sand.jpg



touch701.jpg



D5075.jpg



C16.jpg

04

tortora_dove brown



F92126.jpg



D5071.jpg



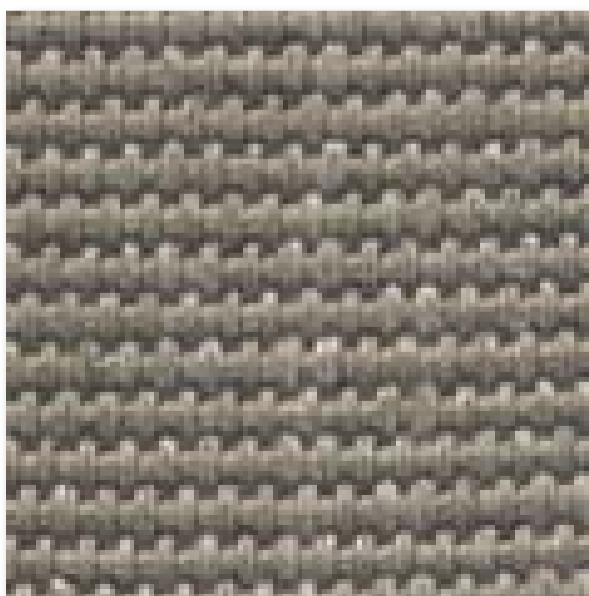
piemoneG707.jpg



10.60_corda-rope.jpg



skin400.jpg



D5077.jpg



C17.jpg

05

creta_clay



F92126.jpg



D5069.jpg



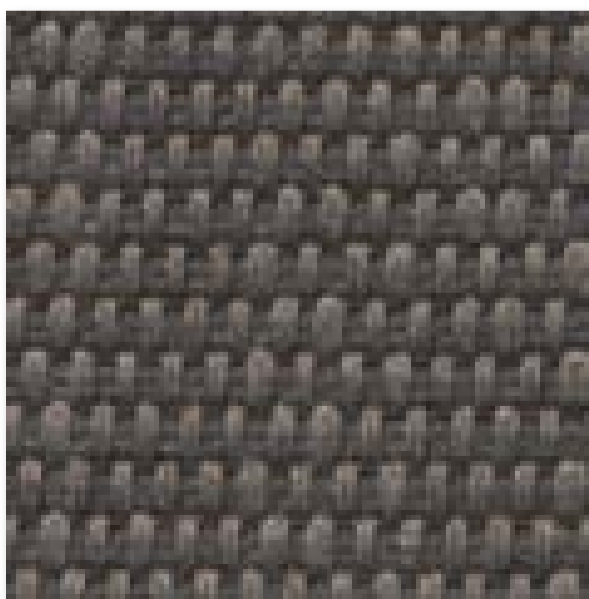
rovere_oak GRIGIO.jpg



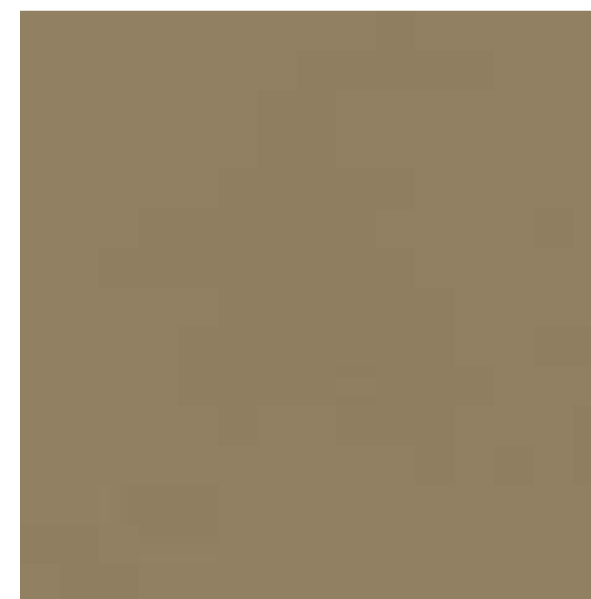
RAL7006_castoro-beaver_.jpg



touch700.jpg



D5076.jpg



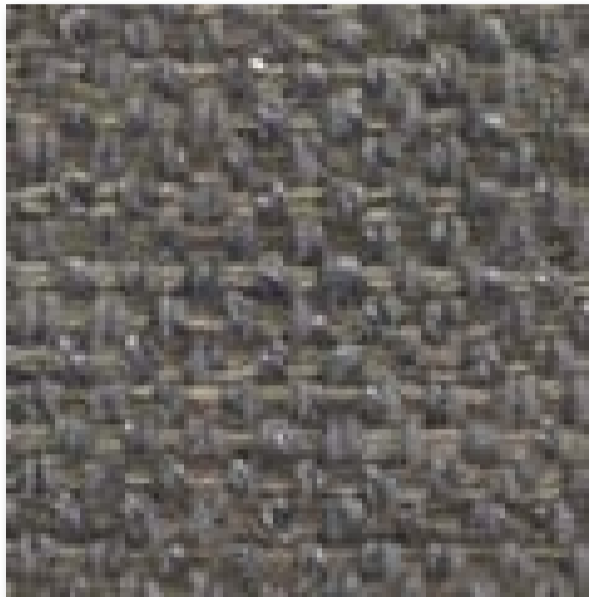
C17.jpg

06

grigio_grey



piumoneG706.jpg



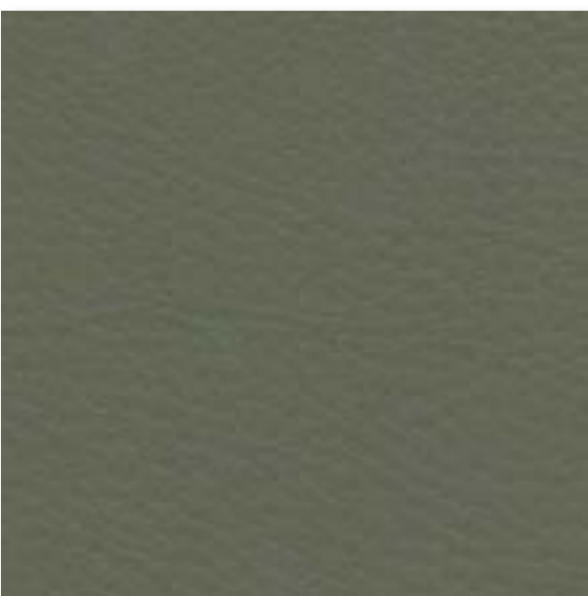
D5072.jpg



rovere_oak GRIGIO.jpg



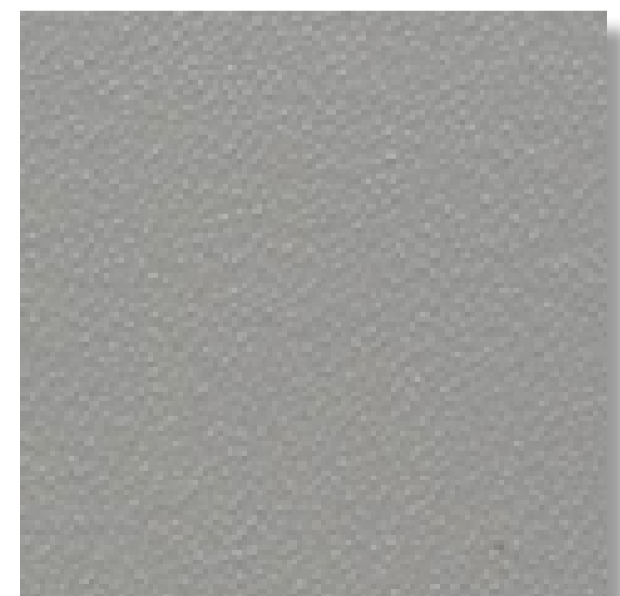
05.60_grigio-grey.jpg



F92128.jpg



D5068.jpg



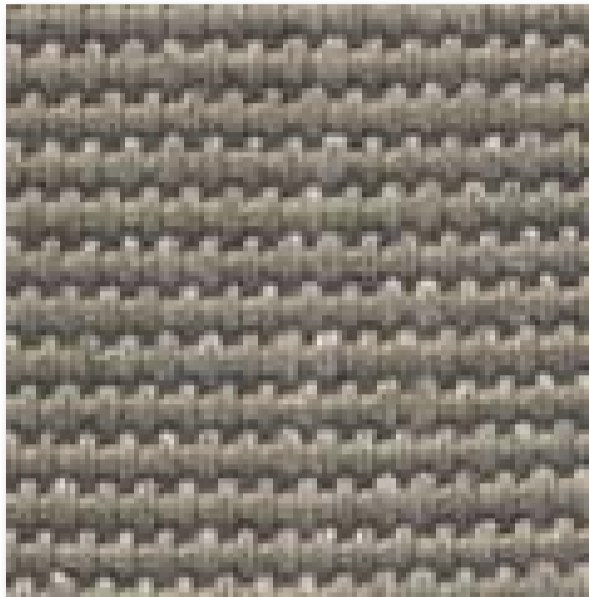
CO1.jpg

07

marrone_brown



F92126.jpg



D5077.jpg



C17.jpg



rovere_oak TERMOTRATTATO.jpg



F92127.jpg



D5070.jpg



C11.jpg