

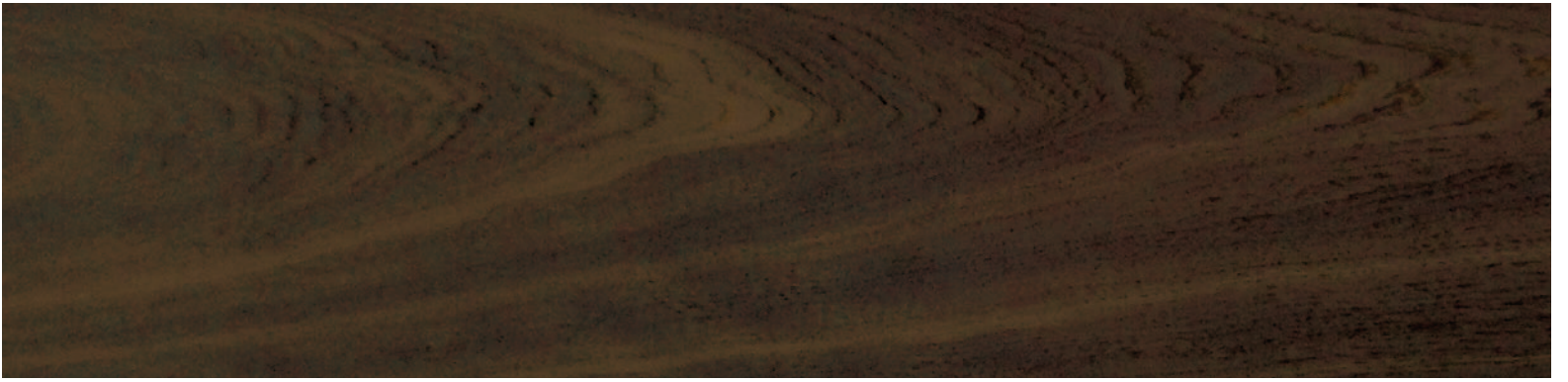
Campionario Sample Card

Antonelloitalia si riserva di apportare, senza preavviso, modifiche nei materiali, nelle finiture e nei disegni dei prodotti presentati in questo catalogo. Le texture ed i colori dei materiali e delle finiture hanno valore indicativo in quanto soggetti alle tolleranze dei processi di stampa.

Antonelloitalia reserves the right to change, without previous notice, materials, finishes and product designs presented in this catalogue. The textures and the colours of materials and finishes are indicative as they are depending on the tolerances of the printing process.

100%
Made in
Italy

Antonelloitalia



Rovere Affumicato_Smoked Oak



Noce Canaletto_Canaletto Walnut



Rovere Grigio_Grey Oak

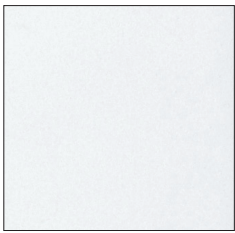


Rovere Naturale_Natural Oak



Rovere Vintage_Vintage Oak

LACCATI OPACHI
MATT LACQUERED WOOD



Bianco **4071**
White



Crema **4092**
Cream



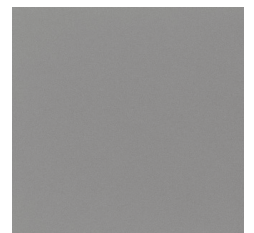
Tortora **4079**
Dove Grey



Fango **4006**
Mud



Moka **4091**
Dark Brown



Grigio Chiaro **4030**
Light Grey



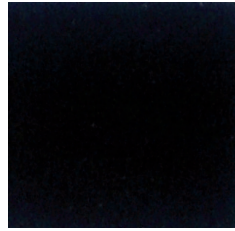
Cenere **4033**
Ash Grey



Grigio Scuro **4022**
Dark Grey

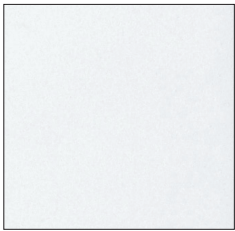


Rosso **4089**
Red



Nero **4073**
Black

LACCATI LUCIDI
SHINING LACQUERED WOOD



Bianco **1071**
White



Crema **1092**
Cream



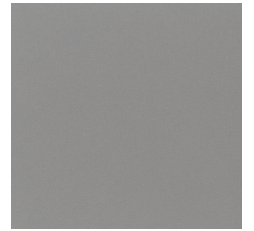
Tortora **1079**
Dove Grey



Fango **1006**
Mud



Moka **1091**
Dark Brown



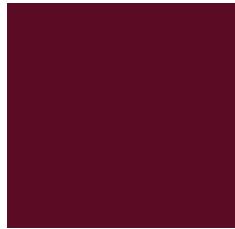
Grigio Chiaro **1030**
Light Grey



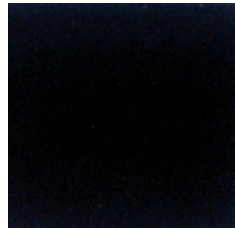
Cenere **1033**
Ash Grey



Grigio Scuro **1022**
Dark Grey



Rosso **1089**
Red



Nero **1073**
Black

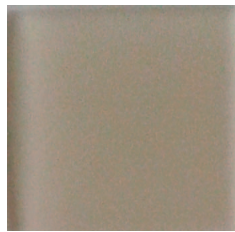
CRISTALLI ACIDATI VERNICIATI OPACHI
MATT PAINTED SATINED GLASS



Bianco **5071**
White



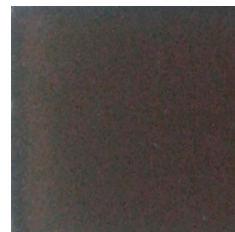
Crema **5092**
Cream



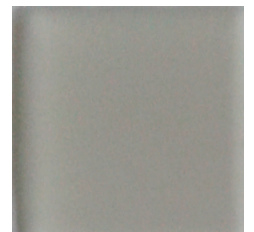
Tortora **5079**
Dove Grey



Fango **5006**
Mud



Moka **5091**
Dark Brown



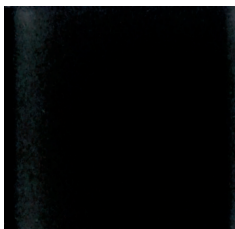
Grigio Chiaro **5030**
Light Grey



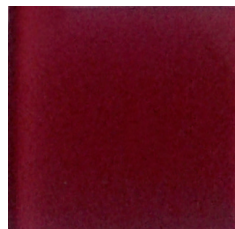
Grigio Scuro **5022**
Dark Grey



Cenere **5033**
Ash Grey



Nero **5073**
Black



Rosso **5089**
Red



Fumé
Fumé

CRISTALLI VERNICIATI LUCIDI

SHINING PAINTED GLASS

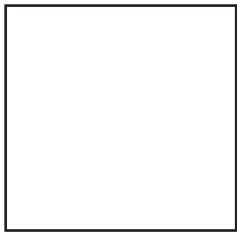
Bianco_White 3071
Crema_Cream 3092
Tortora_Dove Grey 3079

Fango_Mud 3006
Moka_Dark Brown 3091
Grigio Chiaro_Light Grey 3030

Grigio Scuro_Dark Grey 3022
Cenere_Ash Grey 3033
Nero_Black 3073

Rosso_Red 3089

METALLI
METAL



Bianco Opaco **M10**
Matt White



Tortora Opaco **M7**
Matt Dove Grey



Quarzo **M29**
Quartz



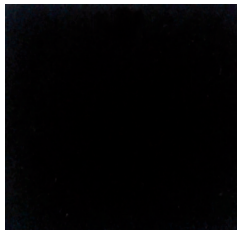
Rame **M32**
Copper



Titanio **M35**
Titanium



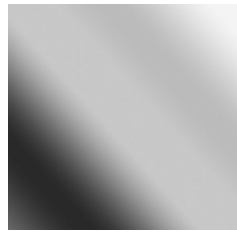
Cenere Opaco **M24**
Matt Ash Grey



Nero Opaco **M5**
Matt Black



Alluminio Satinato
Opaco **M12**
Matt Satined Aluminium



Alluminio Lucido **M14**
Shining Aluminium

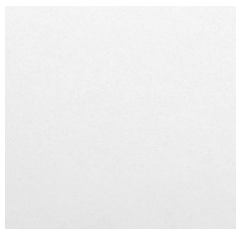


Inox Lucido **M19**
Shining Stainless Steel

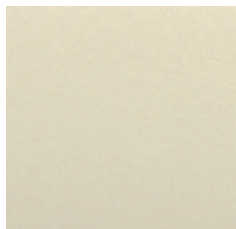


Inox Satinato **M21**
Satined Stainless Steel

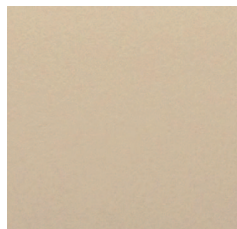
CUOIO
HIDE LEATHER



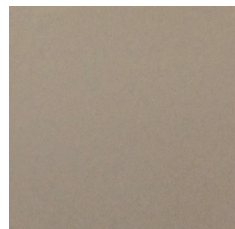
Bianco **71**
White



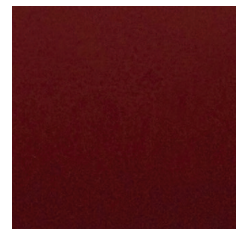
Latte **74**
Milk



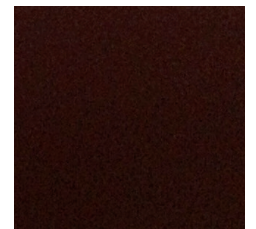
Avorio **12**
Ivory



Tortora **79**
Dove Grey



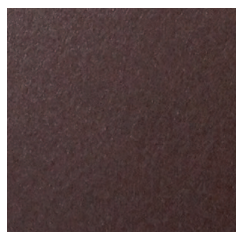
Mattone **16**
Brick Red



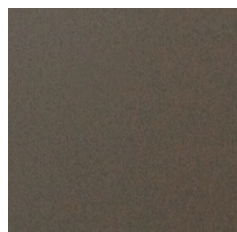
Marrone **20**
Brown



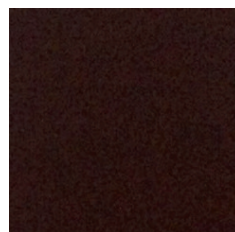
Argento **96**
Silver



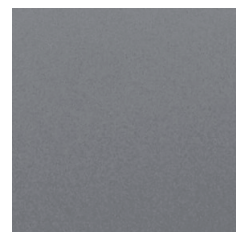
Bronzo **31**
Bronze



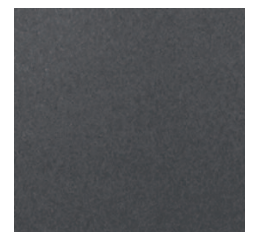
Odra Bruno **38**
Brown Ochre



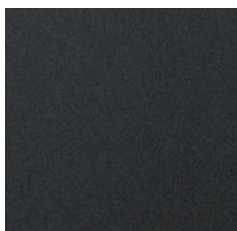
T. di Moro **91**
Dark Brown



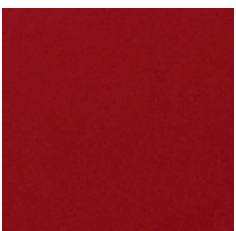
Grigio Chiaro **30**
Light Grey



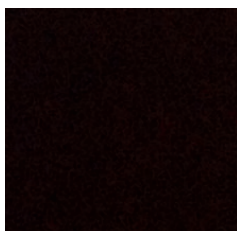
Grigio Piombo **37**
Lead Grey



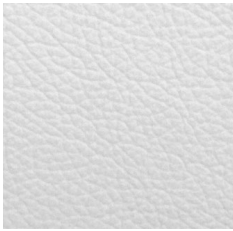
Ardesia **26**
Slate



Rosso **89**
Red



Nero **73**
Black



Bianco **A000**
White



Bianco Panna **A130**
Creamy White



Crema **A028**
Cream



Avorio **A250**
Ivory



Tortora **A264**
Dove Grey



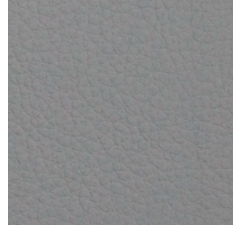
Giallo **A260**
Yellow



Naturale **A060**
Natural



Perla **A033**
Pearl



Grigio Chiaro **A290**
Light Grey



Ardesia **A275**
Slate



Bronzo **A380**
Bronze



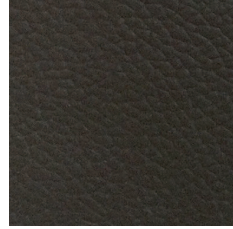
Marrone Chiaro **A278**
Light Brown



Oca Bruno **A325**
Brown Ochre



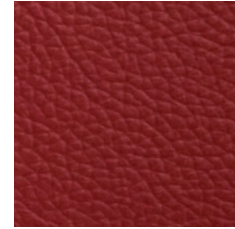
Marrone **A340**
Brown



T. di Moro **A330**
Dark Brown



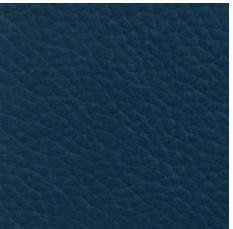
Arancione **A137**
Orange



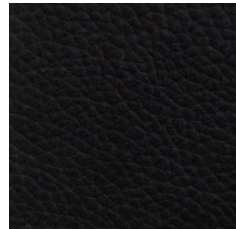
Rosso **A090**
Red



Verde **A359**
Green



Avio **A315**
Aviation Blue



Nero **A150**
Black

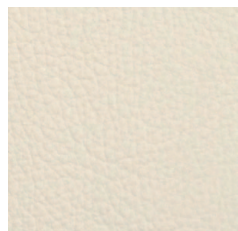
Pelle_Soft Leather

Attenzione: i colori dei campionari sono indicativi e si possono riscontrare lievi tolleranze tra i campioni ed i prodotti finiti
Pulizia e manutenzione: Per la normale pulizia utilizzare solamente un panno morbido e asciutto. Eventuali macchie si possono eliminare agendo con un panno umido e utilizzando prodotti neutri. Non usare solventi (es.alcool) .Solo per macchie più resistenti utilizzare prodotti specifici per la pelle facendo inizialmente una prova in una zona non visibile per verificarne l'efficacia.

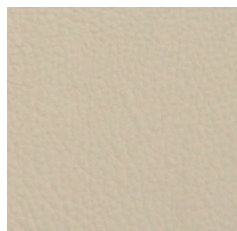
*Warning: the sample colors are indicative and light tolerances can be found between samples and final products.
Cleaning and maintenance: Use a soft and dry cloth for the normal cleaning. Any stain can be removed using a wet cloth and a delicate product. Do not use solvents (i.e. alcohol). Only for more resistant stains use specific products for the soft leather making an initially test on a not visible area to verify its effectiveness.*



Bianco **SI 01**
White



Crema **SI 02**
Cream



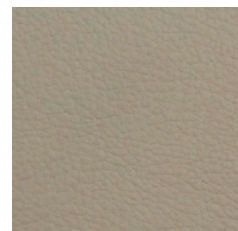
Avorio **SI 04**
Ivory



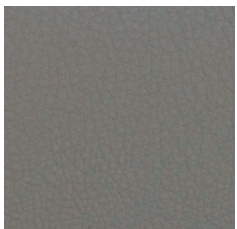
Giallo **SI 11**
Yellow



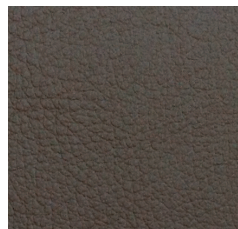
Arancione **SI 12**
Orange



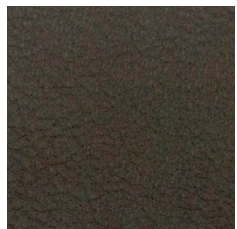
Tortora **SI 05**
Dove Grey



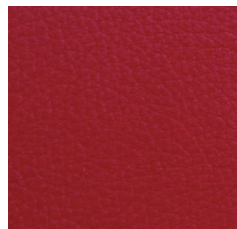
Fango **SI 26**
Mud



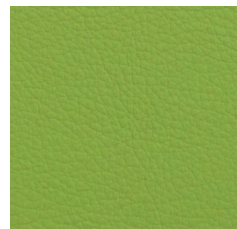
Marrone **SI 07**
Brown



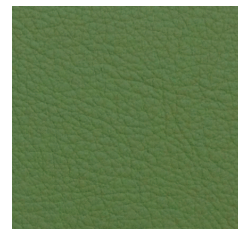
T. di Moro **SI 28**
Dark Brown



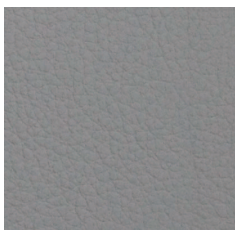
Rosso **SI 13**
Red



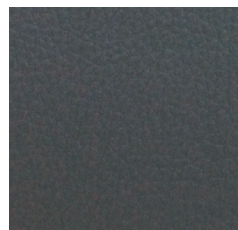
Verde **SI 17**
Green



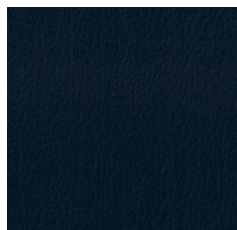
Verde Oliva **SI 18**
Olive Green



Grigio Chiaro **SI 36**
Light Grey



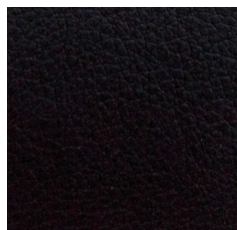
Grigio **SI 23**
Grey



Avio **SI 22**
Aviation Blue



Blu **SI 21**
Blue



Nero **SI 24**
Black

Ecopelle_Synthetic Leather

Attenzione: i colori dei campionari sono indicativi e si possono riscontrare lievi tolleranze tra i campioni ed i prodotti finiti

Pulizia e manutenzione: Per la normale pulizia utilizzare solamente un panno morbido e asciutto. Eventuali macchie si possono eliminare agendo con un panno umido e utilizzando prodotti neutri. Non usare solventi (es.alcool)

Test ignifugo_Fireproof test:
EN 1021-2/93-BS 5852-1/79-BS 5852/90
Sezione_Section 4-crib5
UNI 9175/87 E 9175 FA-1/94 CLASSE_CLASS 1.IM

Warning: the sample colors are indicative and light tolerances can be found between samples and final products.

Cleaning and maintenance: Use a soft and dry cloth for the normal cleaning. Any stain can be removed using a wet cloth and a delicate product. Do not use solvents (i.e. alcohol).

Test ignifugo_Fireproof test:
EN 1021-2/93-BS 5852-1/79-BS 5852/90
Sezione_Section 4-crib5
UNI 9175/87 E 9175 FA-1/94 CLASSE_CLASS 1.IM



Bianco **HM 200 B**
White



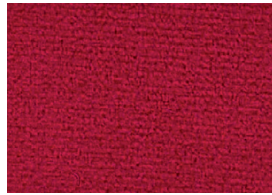
Tabacco **HM 622 B**
Tobacco Brown



Cammello **HM 04 B**
Camel



Ardesia **HM 11 B**
Slate



Rosso **HM 09 B**
Red



Ambra **HM 07 B**
Amber



Giallo **HM 28 B**
Yellow



Crema **HM 25 B**
Cream



Oliva **HM 03 B**
Olive



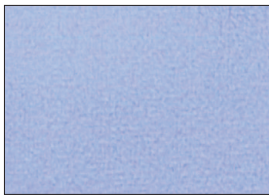
Verde **HM 24 B**
Green



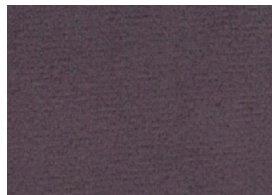
Sabbia **HM 104 B**
Sandy



Tortora **HM 130 B**
Dove Grey



Lilla **HM 21 B**
Lilac



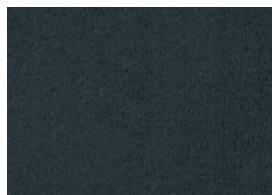
Prugna **HM 80 B**
Plum



Turchese **HM 16 B**
Turquoise



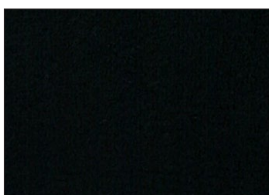
Perla **HM 19 B**
Pearl



Antracite **HM 205 B**
Anthracite



Grigio Scuro **HM 27 B**
Dark Grey



Nero **HM 18 B**
Black

Moon Tessuto_Fabric
HM Categoria_Category B

Composizione: 100% PL

Altezza: cm.140

Peso: 500 gr/mtl

Note: Idrorepellente.

Abrasione: 40000 Martindale

Colore: possono riscontrarsi lievi differenze.

Manutenzione: Per rimuovere macchie lievi passare la superficie con un panno umido o con una soluzione di acqua e sapone neutro risciacquando successivamente con acqua.

Composition: 100% PL

Height: cm.140

Weight: 500 gr/mtl

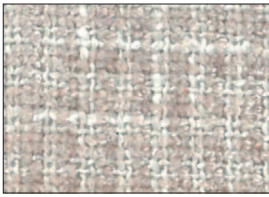
Notes: water-repellent.

Abrasion: 40000 Martindale

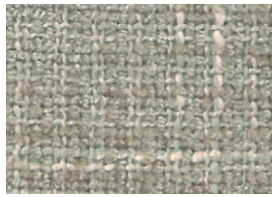
Colour: there may be slight differences.

Maintenance: For removing slight stains pass the surface with a damp cloth or with a solution of water and neutral soap and then rinse with water.

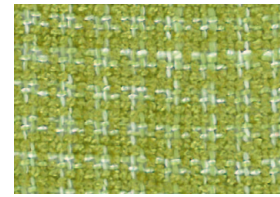




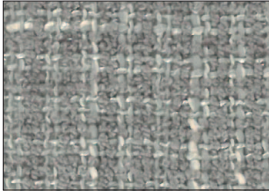
Beige **TX 20 B**
Beige



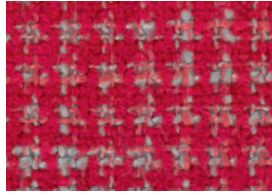
Sabbia **TX 130 B**
Sandy



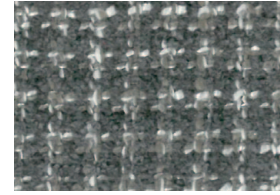
Verde **TX 24 B**
Green



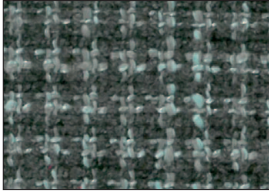
Perla **TX 19 B**
Pearl



Rosso **TX 09 B**
Red



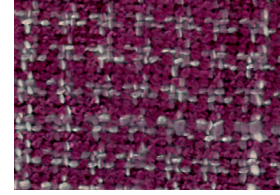
Tortora **TX 205 B**
Dove Grey



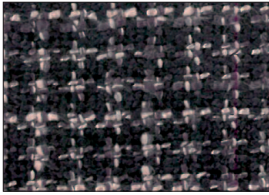
Grigio **TX 27 B**
Grey



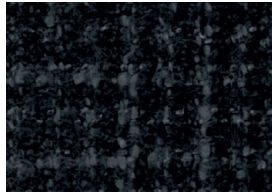
Blu **TX 14 B**
Blue



Vinaccia **TX 80 B**
Marc



Prugna **TX 10 B**
Plum



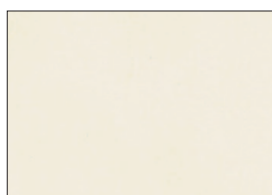
Nero **TX 18 B**
Black

Tuxedo Tessuto_*Fabric*
TX Categoria_*Category* **B**

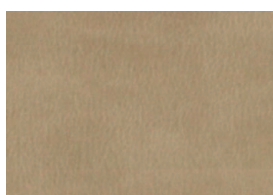
Composizione: 100% PL
Altezza: cm.140
Peso: 470 gr/mtl
Abrasione: 80000 Martindale
Colore: possono riscontrarsi lievi differenze.

*Composition: 100% PL
Height: cm.140
Weight: 470 gr/mtl
Abrasion: 80000 Martindale
Colour: there may be slight differences.*

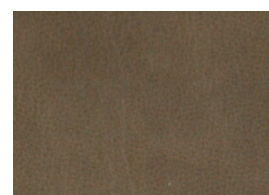




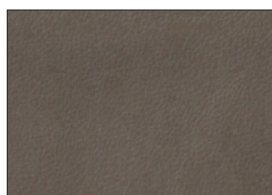
Avorio **RE 13 B**
Ivory



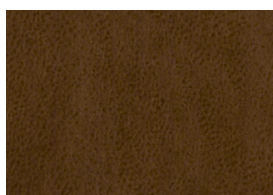
Sabbia **RE 195 B**
Sandy



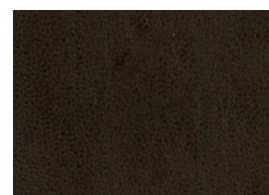
Tortora **RE 975 B**
Dove Grey



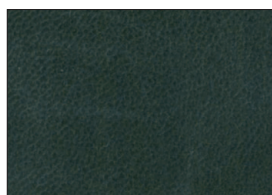
Oliva **RE 954 B**
Olive



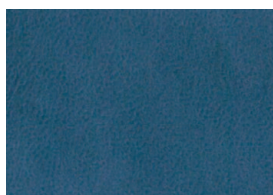
Tabacco **RE 100 B**
Tobacco Brown



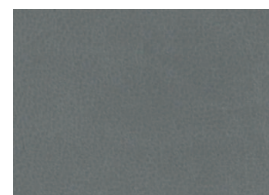
T. di Moro **RE 888 B**
Dark Brown



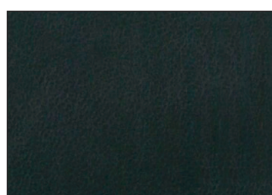
Bosco **RE 290 B**
Forest Green



Avio **RE 112 B**
Aviation Blue



Grigio Chiaro **RE 970 B**
Light Grey



Grigio Scuro **RE 792 B**
Dark Grey

Rem prodotto tecnico vintage
vintage technical product
RE Categoria_Category **B**

Composizione: 11% CO 24% PES 65% PU
Altezza: cm.140
Peso: 630 gr/mtl
Note: Ignifugo classe 1 IM, Antigraffio.
Abrasione: 50000 Martindale
Colore: possono riscontrarsi lievi differenze.
Manutenzione: Per rimuovere macchie lievi passare la superficie con un panno umido o con una soluzione di acqua e sapone neutro risciacquando successivamente con acqua. Non usare candeggine o detersivi chimici.

Composition: 11% CO 24% PES 65% PU
Height: cm.140
Weight: 630 gr/mtl
Notes: fire resistant class 1 IM, scratch resistant.
Abrasion: 50000 Martindale
Colour: there may be slight differences.
Maintenance: For removing slight stains pass the surface with a damp cloth or with a solution of water and neutral soap and then rinse with water. Don't use bleaches or chemical detergents.





Bianco **CT 17 A**
White



Beige **CT 08 A**
Beige



Crema **CT 33 A**
Cream



Tortora **CT 39 A**
Dove Grey



Tabacco **CT 47 A**
Tobacco Brown



Cammello **CT 44 A**
Camel



Marrone **CT 43 A**
Brown



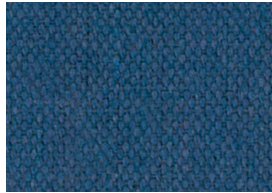
T. di Moro **CT 28 A**
Dark Brown



Glicine **CT 67 A**
Wisteria



Blu **CT 15 A**
Blue



Azzurro **CT 02 A**
Light Blue



Grigio Chiaro **CT 37 A**
Ligh Grey



Grigio Scuro **CT 05 A**
Dark Grey



Nero **CT 07 A**
Black

Smart Tessuto_Fabric
CT Categoria_Category A

Composizione: 90% CO 10% AF

Altezza: cm.140

Peso: 450 gr/ml

Note: Idrorepellente, Antimacchia, Traspirante

Abrasione: 18000 Martindale

Colore: possono riscontrarsi lievi differenze.

Tessuto trattato con nanotecnologia: speciale trattamento a base di nanosfere inerti che aumentano la resistenza, durata e piacevolezza al tatto.

Composition: 90% CO 10% AF

Height: cm.140

Weight: 450 gr/ml

Notes: Water-repellent, Stain-resistant, Transpirant

Abrasion: 18000 Martindale







Colour: there may be slight differences.

Fabric treated with nanotechnology: special treatment based on inert nanospheres increasing the strength, durability and pleasant feel of the surface.



Tessuti idrorepellenti e antimacchia

Le moderne tecniche costruttive ci permettono di avere tessuti formati da filati con fibre finissime (dette microfibre) che intrecciate tra loro conferiscono una eccezionale robustezza. La caratteristica di Antimacchia ne deriva dal fatto che lo sporco non attecchisce al filato e può essere rimosso con la semplice smacchiatura. Il trattamento Idrorepellente non permette ai liquidi e macchie di penetrare nelle fibre mantenendo la caratteristica traspirante del tessuto e aumentandone la facilità di eliminare le macchie. Tutto ciò si traduce in massima praticità, confort e durata.

Simboli di lavaggio	
 Lavaggio a macchina alla temperatura indicata	 Asciugatura in posizione verticale (appeso) del prodotto tessile intriso d'acqua, cioè senza spremitura e/o centrifuga
 Stirare a bassa temperatura (max 110°)	 Non candeggiare
 Il prodotto tessile non sopporta l'asciugatura in tamburo	 Lavaggio a secco con tutti i solventi escluso la trielina

Norme di smacchiatura per tessuti idrorepellenti

Caffè, Latte, The: tamponare con carta assorbente. Quindi eliminare la macchia con panno imbevuto con acqua e sapone neutro. Se la macchia persiste strofinare con tampone imbevuto con alcool denaturato.

Inchiostro, Biro: assorbire con carta assorbente e poi trattare con panno imbevuto con trielina o alcol denaturato.

Olio e Grasso: tamponare con carta assorbente. Eliminare la macchia con tampone imbevuto con trielina o percloroetilene.

Vino e Liquore: assorbire prima con carta assorbente. Eliminare la macchia con tampone imbevuto con alcol denaturato.

Erba e Marmellata: Tamponare con acqua. Per eliminare eventuali aloni strofinare con carta assorbente e ripetere il trattamento con panno imbevuto con alcol denaturato.

Ecopelle







L'ecopelle è un prodotto Made in Italy e ha superato le sottoelencate prove per la resistenza alla fiamma secondo gli standard europei. EN 1021-2/93-BS 5852-1/79-BS 5852/90 Sezione 4-crib5 UNI 9175/87 E 9175 FA-1/94 CLASSE 1.IM

Manutenzione e lavaggio

L'ecopelle va spolverata delicatamente e in caso di macchie lievi passare la superficie con un panno umido o con una soluzione di acqua e sapone neutro risciacquando successivamente con acqua. Non usare solventi, candeggine o detergenti chimici

Fabrics water-repellent and stain-resistant

The modern construction techniques allow us to get fabrics composed by yarns with very thin fibres (called microfibrines) giving an exceptional strength when interwoven among them. Thanks to their characteristic of stain-resistant, the dirty doesn't penetrate into the yarn and can be removed with a simple stain removing. The water-repellent treatment doesn't allow the liquids and stains to penetrate in the fibres, maintaining anyway the transpiring characteristic of the fabric and increasing the facility to remove the stains. All this means maximum practicality, comfort and duration.

Washing symbols	
 Machine washing at the indicated temperature	 Drying in vertical position (hanging) soaked in water, it means without squeezing and/or spin-drying
 Ironing at low temperature (max 110°)	 Do not bleach
 Do not dry by means of tumble dryer	 Dry cleaning with all solvents except for trichloroethylene

Rules of stain removing for water-repellent fabrics

Coffee, Milk, Tea: tampon with blotting paper. Then remove the stain using a cloth soaked in water and neutral soap. If the stain persists, scrub using a pad soaked in denatured alcohol.

Ink, Ballpoint: absorb using blotting paper and then treat using a cloth soaked in trichloroethylene or denatured alcohol.

Oil and Greasy: tampon with blotting paper. Remove the stain with a pad soaked in trichloroethylene or perchloroethylene.

Wine and Liqueur: absorb using a blotting paper. Remove the stain using a blotting pad soaked in denatured alcohol.

Grass and Jam: tampon with water. Scrub using blotting paper for removing possible halos and repeat the treatment using a cloth soaked in denatured alcohol.

Synthetic leather

The synthetic leather is a Made in Italy product and it passed the here below tests concerning the fire resistance according to the European standards.

EN 1021-2/93-BS 5852-1/79-BS 5852/90 Section 4-crib5 UNI 9175/87 E 9175 FA-1/94 CLASS 1.IM

Maintenance and washing

The synthetic leather must gently be dusted and in case of light stains pass the surface with a damp cloth or with a solution of water and neutral soap and then rinse with water. Don't use solvents, bleaches or chemical detergents.

AntonelloItalia

MODERN
PALETTE