

DEVI

BY RADHIKA C

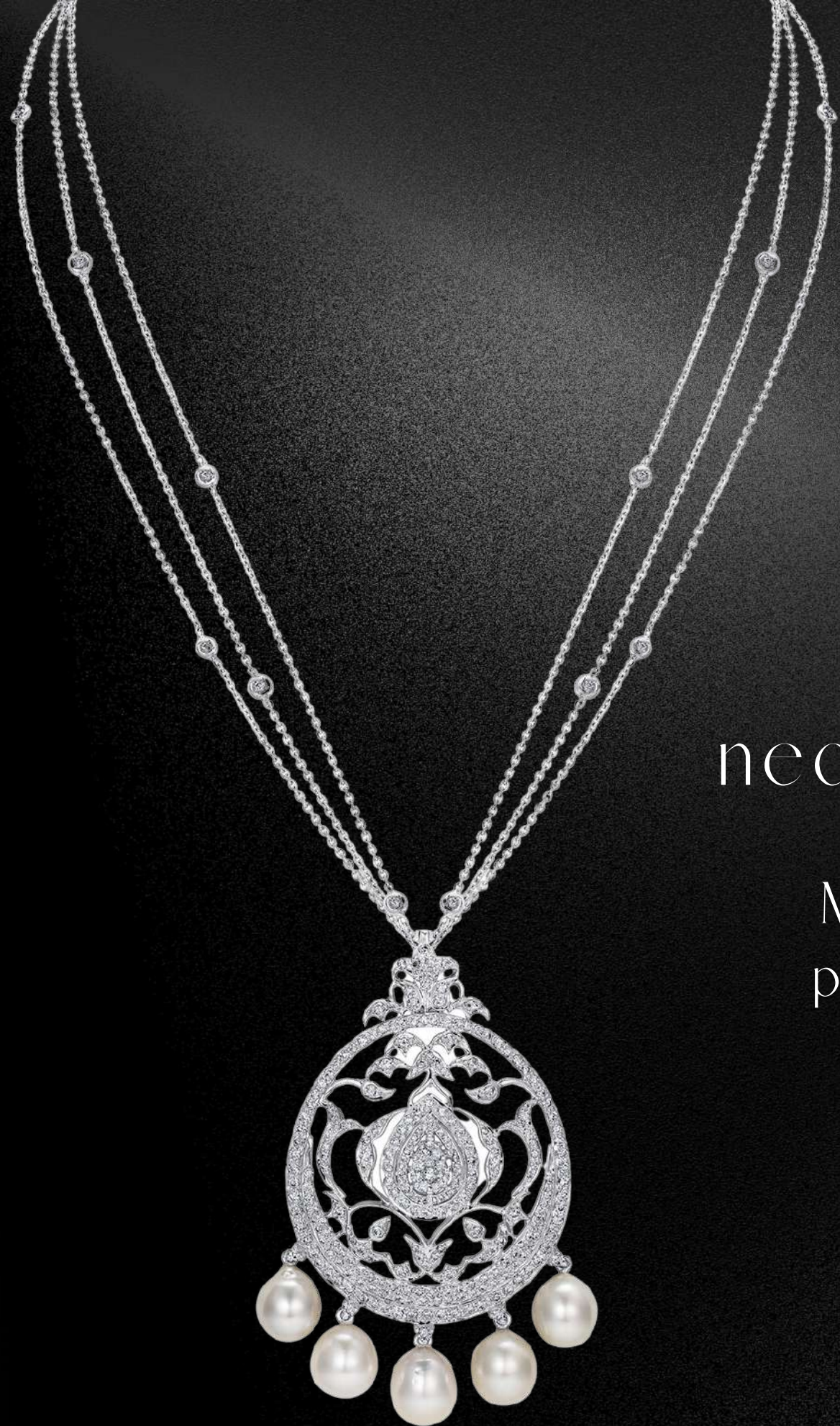


Our founder and Creative Director, Radhika, has been part of the jewellery industry for over 20 years. After spending time with like-minded designers in her mid-20s, Radhika has been designing bespoke luxurious jewelry pieces since 2018. After graduating and completing her MBA, Radhika started on her journey as a jewellery designer and she never looked back. It all started for Radhika as a personal passion, believing not just in the intrinsic beauty of precious stones and diamonds, but in the symbolism and deeper meaning behind each jewellery piece she designs, in the hope of empowering other women.

Every summer, Radhika spent time with her grandmother in Mumbai. Upon seeing her grandmother's collection of precious stones and jewels, she would be captivated by the lustre, colour, and shine of the jewelry pieces that her grandmother would wear. In the evenings, she would watch her grandmother getting ready for dinner, and there would emerge beautiful, dazzling, and elaborate pieces of diamond jewelry. It was fascinating how, when worn, the movement of the stones brought life and a smile to her grandmother's face. When the jeweler would come to meet her grandmother, Radhika would sit listening intently and see the different stones. It was mesmerising, and Radhika was in love! The love affair has never stopped over the years, resulting in the creation of Devi Jewels.

NECKLACES

devijewels.co



DIAMOND AND PEARL PENDANT

necklace cum forehead accessory

Multi-functional by nature, this diamond and pearl piece is a must-have for every bridal collection! It serves as a beautiful forehead accessory cum pendant. Easy to carry, easy to wear & simply gorgeous when worn!



MARQUISE DIAMOND CHAIN

our diamond chain, with 2.71 carats worth of 7 individual Marquis diamonds. With a net weight of 3.332 grams, this necklace will transfer you to the 7th heaven.



devijewels.co

DEVI
BY RADHIKA C



RIVIERA NECKLACE LARGE



CLASSIC UNCUT
DIAMOND NECKLACE

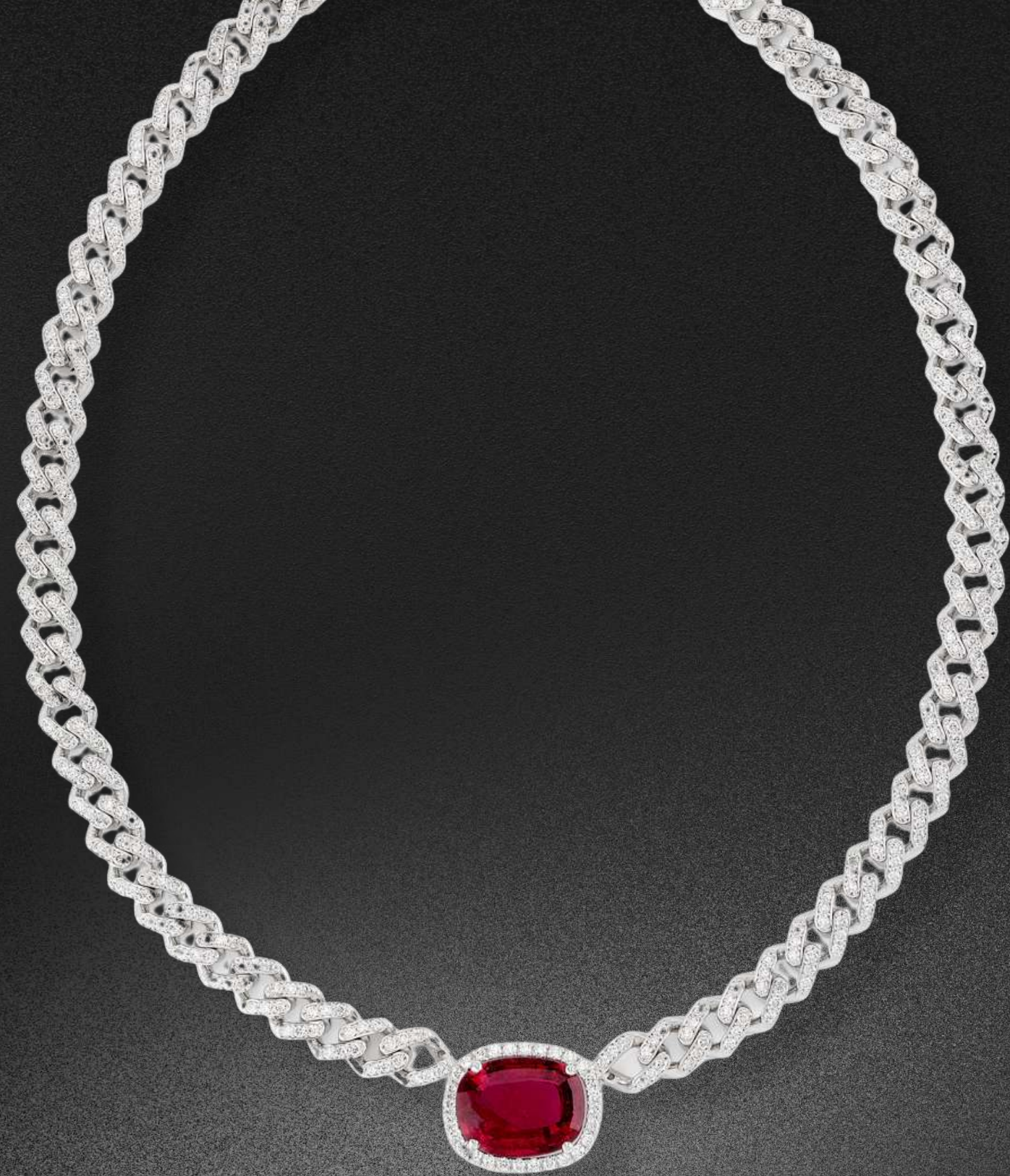


TUTTI FRUTTI TWO LAYERED NECKLACE

Inspired by the Royal Maharajas. This decadent, two layered necklace is composed of an oval carved tanzanite centre on the top string, with a carved emerald drop hanging. The second layer is composed by an octagonal carved Zambian emerald, with an oval tanzanite hanging from it at the centre.



RUBY & DIAMOND
FLOWER NECKLACE



DIAMOND AND
TOURMALINE NECKLACE



RARE RUBY &
DIAMOND NECKLACE

DEVI
BY RADHIKA C



NEW-IN
CIRCLE DIAMOND
NECKLACE



SOUTH SEA
PEARL NECKLACE

devijewels.co

DEVI
BY RADHIKA C



TUTTI FRUTTI NECKLACE

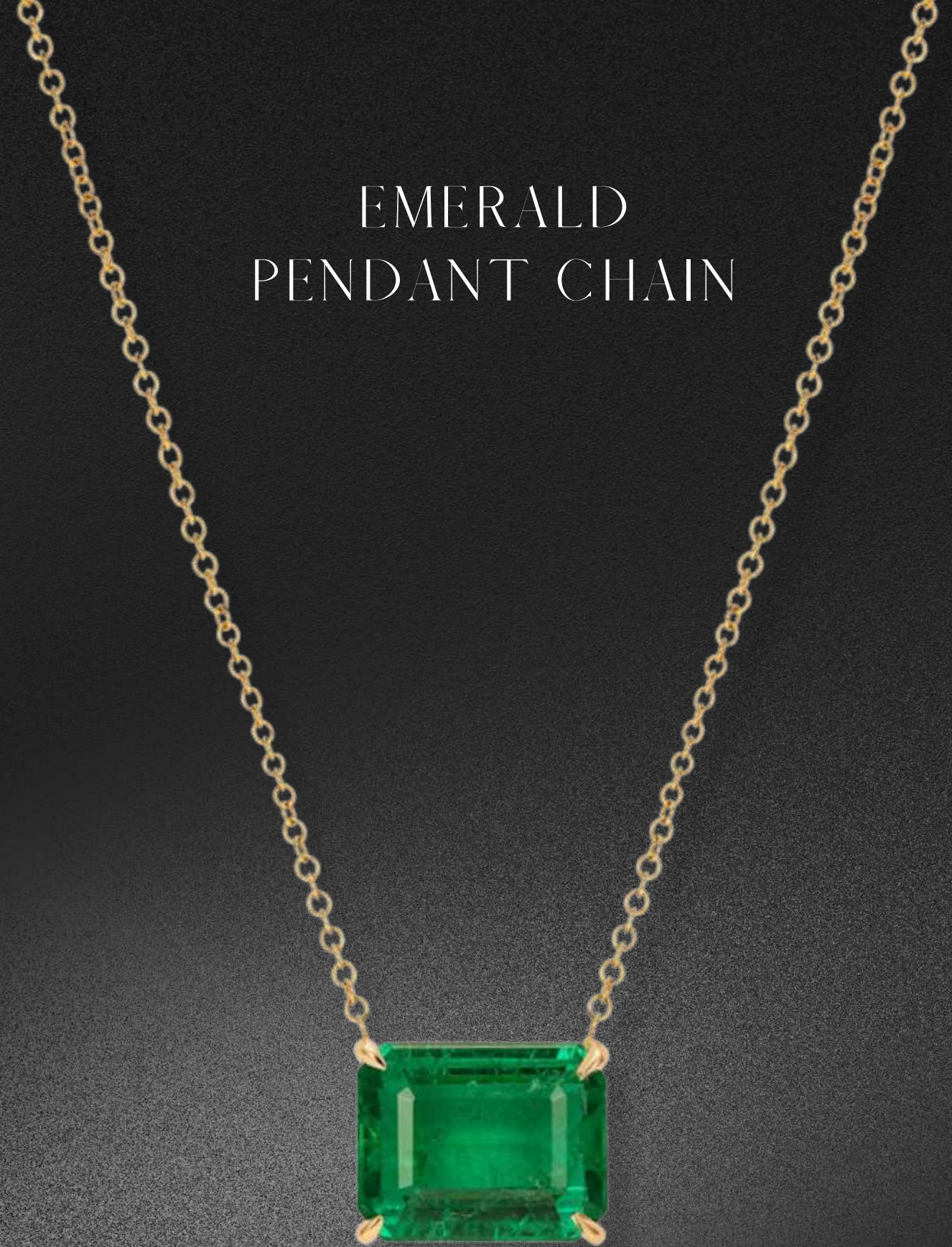
Our multistrand and multicolor gold necklace consists of uncut flat diamonds, rubies, and emeralds.





PEARL CHOKER

EMERALD
PENDANT CHAIN





CIRCLE OF LIFE DIAMOND
PENDANT NECKLACE



DIAMOND RIVIERA NECKLACE

DEVI
BY RADHIKA C



DEVI
BY RADHIKA C



NEW-IN
EMERALD PENDANT CHAIN



NEW-IN
EMERALD HEART NECKLACE

DEVI
BY RADHIKA C



NEW-IN
DIAMOND HEART PENDANT NECKLACE



NEW-IN
DIAMOND AND EMERALD NECKLACE



TWIN-LAYERED DIAMOND PENDANT CHAIN

This layered necklace has two chains with invisible diamond set pendants surrounded by micro diamonds, weighing a total of 1.60 carats.

devijewels.co

DEVI
BY RADHIKA C

EMERALD NECKLACE



ILLUSION SET DIAMOND PENDANT CHAIN





EMERALD BEAD NECKLACE

A pair of vintage diamond starburst earrings has been converted into a pair of brooches and strung from over 1000 carats of Zambian emerald beads.



NATURE INSPIRED EMERALD & DIAMOND NECKLACE

With 3 Zambian emeralds of about 30 carats in total, this diamond necklace is a decorative piece that eludes richness and magnificence. Hundreds of pave set diamonds bring out the color and luster of the emerald stones.

RINGS

devijewels.co

DEVI
BY RADHIKA C



TWO-TONED YELLOW & WHITE
DIAMOND PEAR SHAPED
DIAMOND RING



RUBY ETERNAL BAND
DIAMOND ETERNAL BAND
EMERALD ETERNAL BAND



EMERALD & DIAMOND
COCKTAIL RING



EMERALD AND DIAMOND RING



MODERN GOLD &
DIAMOND LINK RING



LATTICE LONG DIAMOND
& ROSE GOLD RING



DIAMOND KNOT RING



TWO-TONED SOUTH SEA PEARL WHITE
& YELLOW DIAMOND RING



BLUE TANZANITE RING



DIAMOND
BUTTERFLY RING



OVAL CUT THAI RUBY RING



BLUE TANZANITE RING



ANTIQUE RING



EMERALD & DIAMOND RING



CARVED FLOWER
TOURMALINE RING



YELLOW AND WHITE PEAR SHAPE DIAMOND RING

devijewels.co

DEVI
BY RADHIKA C

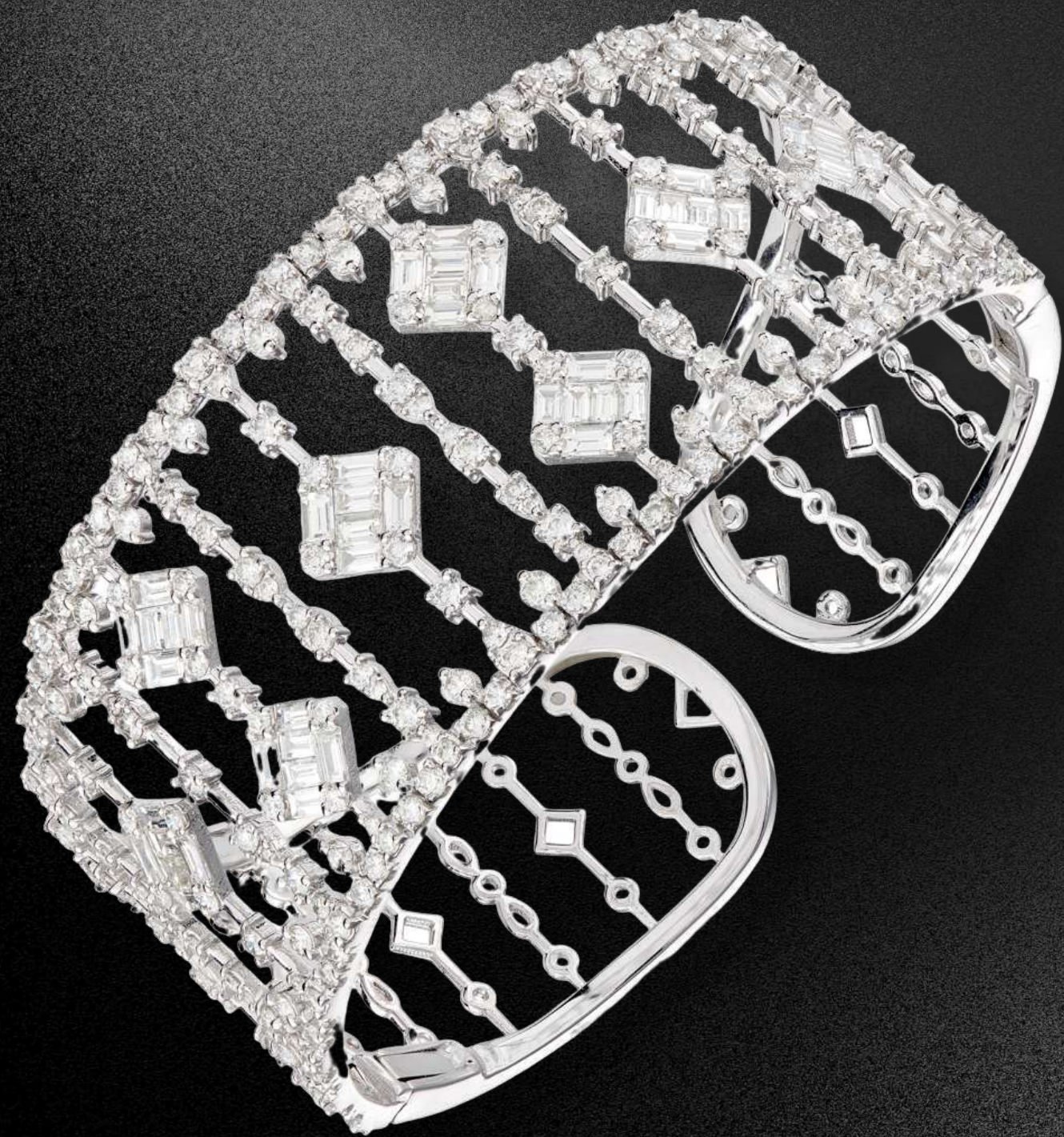
BRACELETS

devijewels.co

EMERALD AND
DIAMOND BANGLE



WOOD, GOLD & PAVE
DIAMOND SERPENT BRACELET



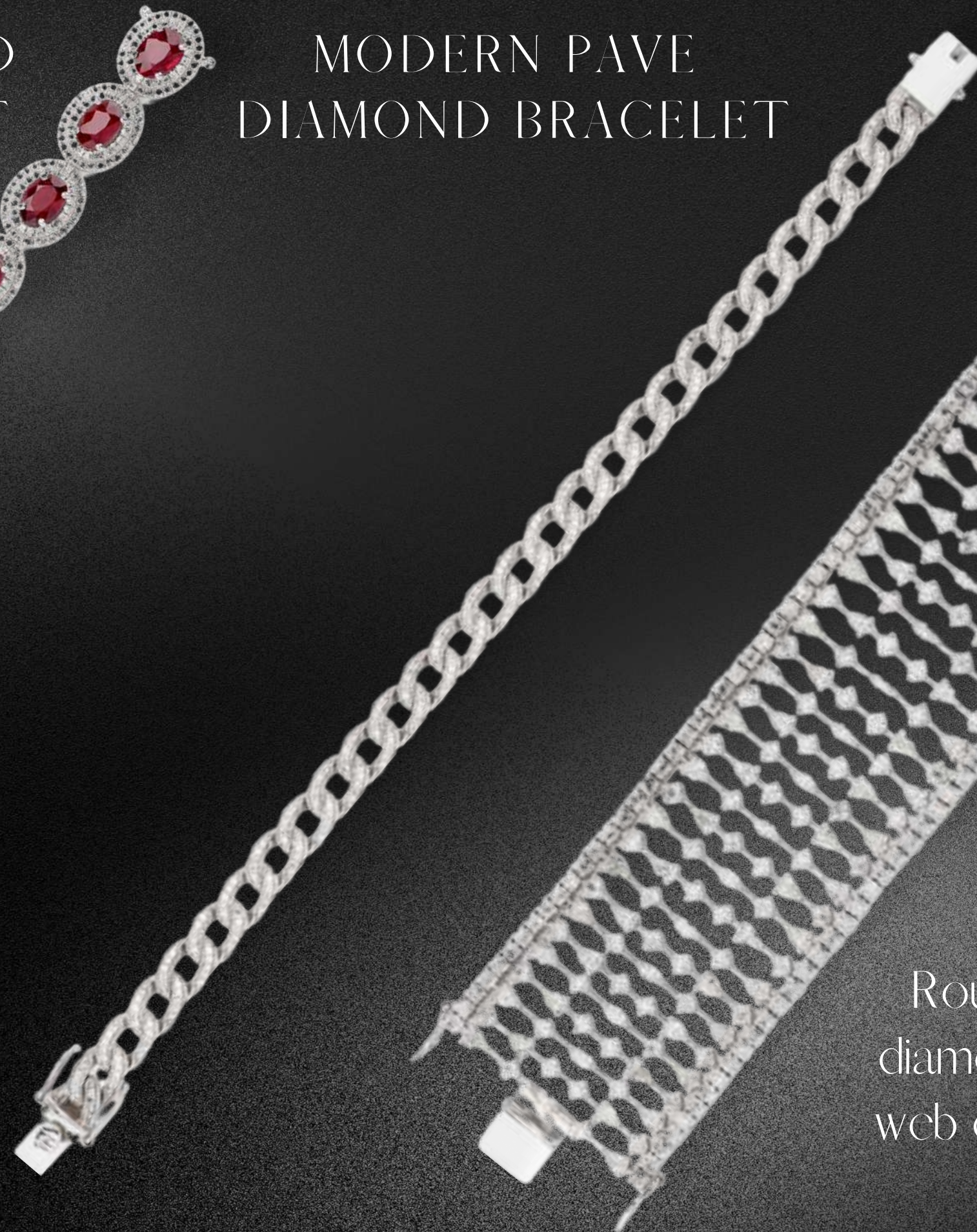
DIAMOND HINGED BRACELET



RUBY & DIAMOND
HALO BRACELET



MODERN PAVE
DIAMOND BRACELET



LARGE
DIAMOND
BRACELET

Round, pear, and marquise-shaped diamonds are woven into an intricate web design covering your entire wrist with 17.65 carats diamonds.



DIAMOND DOUBLE HEAD PANTHER HINGE BRACELET

Made with white pave diamonds in 18 carat gold, it is a diamond jewellery piece that can be worn on its own or stacked with other Devi bracelets. An essential part of our jewellery collection.



EVIL EYE BRACELET



TOURMALINE HINGE BRACELET

Our show stopping 20.94 carat tourmaline stone sits atop your hand like a magnificent crown. Courted by 4.67 carats of white diamonds.

EMERALD AND DIAMOND BRACELET





EXPANDABLE DIAMOND BRACELET

These gently alluring diamond bracelets can be worn on their own or stacked with other Devi bracelets to complement and add to the sparkle of each piece. Their versatile nature makes them a must have in your jewelry collection, to uplift any and every look.



devijewels.co

DEVI
BY RADHIKA C

EARRINGS

devijewels.co



RUBY PETAL & EMERALD
CENTRE EARRINGS



EMERALD & DIAMOND
SHARD EARRINGS



RUBY AND EMERALD
FLOWER EARRINGS



TUTTI FRUTTI EARRINGS



RUBY PAVE
DIAMOND EARRINGS



CLASSIC UNCUT
DIAMOND EARRINGS



WHITE AND YELLOW MARQUIS DIAMOND EARRINGS

A unique twist on the classic hoop earrings, 6.68 carats of striking yellow and white diamonds create an alluring design for this pair of diamond earrings. The white diamonds are placed in the shape of a wreath to convey celebration and joy.



BAROQUE PEARL ADD ONS

We created these stunning pair of flawless, baroque pearls that can be added to any top earrings, to add length and splendor. It transforms the entire look.



TWO-TONED SOUTH SEA PEARL AND DIAMOND EARRINGS

An alluring pair of white and yellow diamonds with white south sea pearls. The pave set white diamonds in a leaf motif, accentuated with round yellow diamonds and the creamy south sea pearls.



RUBY PEARL AND DIAMOND TASSEL EARRINGS

The large, pear shape Mozambique rubies surrounded by marquise diamonds add the modern touch to the tassel of cultured pearls with splashes of green emeralds at the bottom, giving this pair an air of elegance.



RUBY GOLD UNCUT
DIAMOND EARRINGS

LONG EMERALD PEARL &
DIAMOND DANGLING EARRINGS



EMERALD BEAD
CHANDBALI EARRINGS

EMERALD & DIAMOND EARRINGS

The gorgeous symphony of round, pear, and marquise diamonds play in perfect harmony to the 22.15 total carat Zambian emeralds. With inspiration from the intricate feathers of a peacock and the 20.55 total carat round, marquise, and pear shape diamonds giving the finishing touches to this shoulder-length pair, these diamond earrings are a red carpet look within themselves.



DEVI
BY RADHIKA C



INVISIBLE TWIN SET
DIAMOND EARRINGS



CIRCLE OF LIFE PEAR SHAPED
DIAMOND EARRINGS

RUBY FLOWER EARRINGS

This stunning piece has been created using 77.43 carats of rubies and 1.57 H color diamonds. The Thai-origin rubies create an exotic look and feel for the earrings, accentuated by the ruby and diamond drops which signify the dewdrops falling off of flower petals in the morning.

devijewels.co



devijewels.co

DEVI
BY RADHIKA C

DIAMOND PAVE HOOPS



PEARL AND DIAMOND TOPS



EMERALD & DIAMOND EARRINGS



DIAMOND TOPS

Baguette diamonds are surrounded by a mixture of round and baguette diamonds, which create a subtle aura around the sparkle of the coloured 1.2 carat diamond tops.

OVAL CUT EMERALD & DIAMOND EARRINGS

These emerald earrings are set in claw-cut diamonds of 2.26 carats (for the pair), thus creating a special look.





PALM TREES IN TANZANITE AND DIAMONDS

Taking our diamonds and tanzanites on a tropical vacation - our palm tree inspired tanzanite and diamond earrings are designed to resemble the curved shape of the leaves of a palm tree. The clear rose cut diamonds at the top, pair of 3.2 cts. combined with the round brilliant cut diamonds forming the branches and trunk set the stage for the 33.97 carats (for the pair) oval cut tanzanite pair to shine.



MARQUISE CASCADING
DIAMOND EARRINGS

TEAR DROP DIAMOND AND
EMERALD EARRINGS



DIAMOND HOOPS