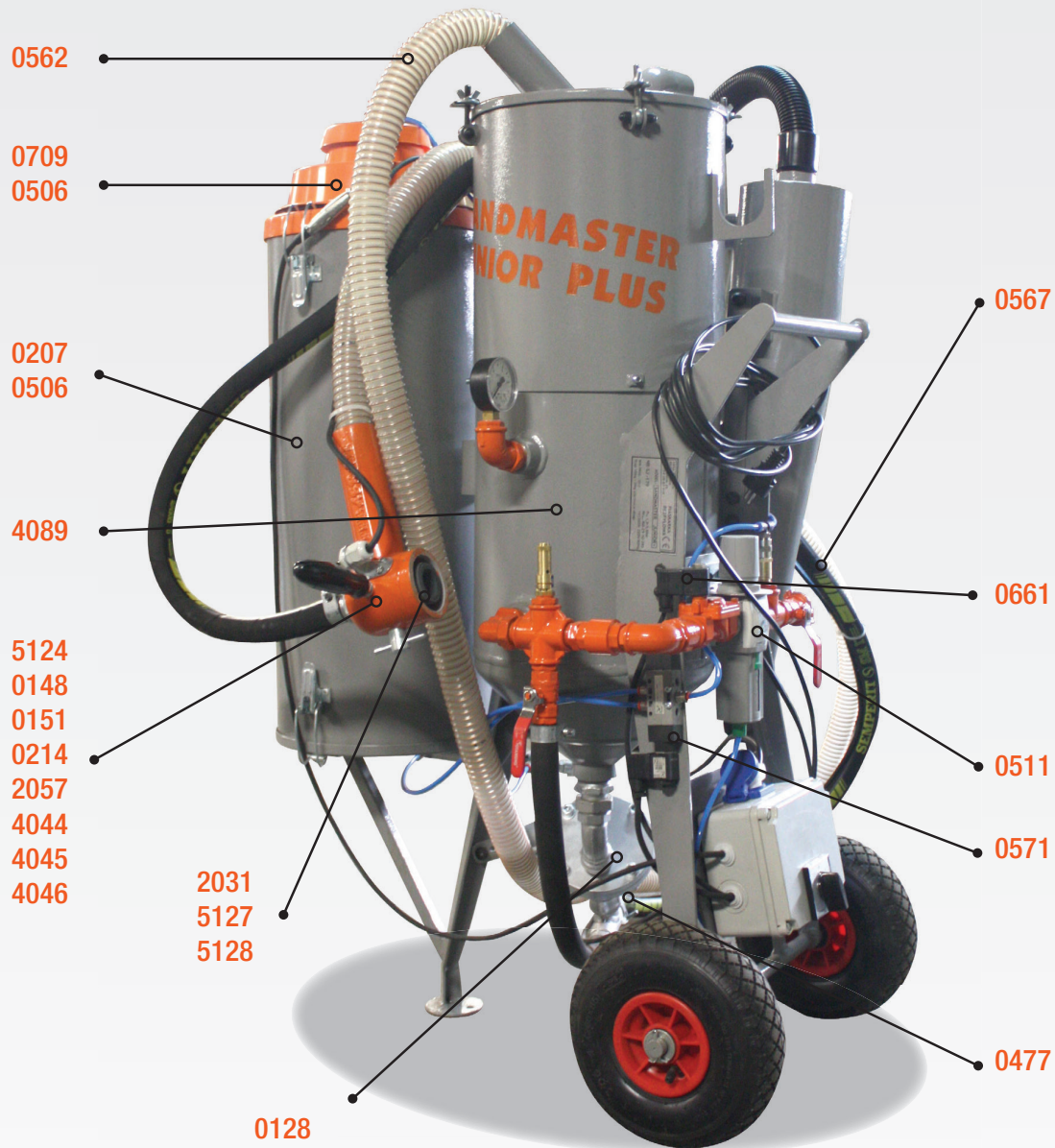


Sandmaster Junior Plus



Head (cast)

2057



Sandblasting head for Sandblaster Junior and Junior Plus sandblasting machines (cast).

Complete head

0148



Complete sandblasting head for Sandblaster Junior and Junior Plus sandblasting machines (cast+fittings).

Linen filter (old types)

0207



Linen filter for old types of sandblasting machines.

Linen filter (new types)

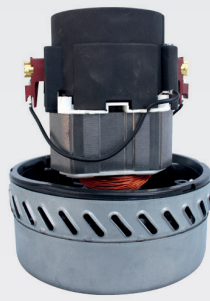
0506



Linen filter for new types of sandblasting machines.

1200W suction motor

1018



Air suction motor situated in the head of the vacuum.

Head cover (rubber)

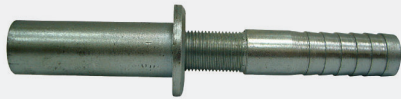
5124



Sandblasting head cover (rubber, 80 mm long).

Nozzle frame

0151



Sandblasting nozzle frame situated in the sandblasting head.

Abrasive rubber hose

0567



Rubber hose which supplies abrasive to sandblasting head.

Air suction hose

0562



The hose which pipes air together with abrasive from the sandblasting head to the tank.

3/8 inch G filter pressure regulator

0511



The valve which controls pressure at the outlet and purifies compressed air. It is fitted with a dehydrator and a gauge.

3/4 inch electrovalve

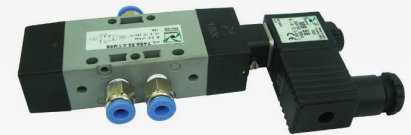
0661



The valve which controls airflow in the circuit.

Electrovalve actuator

0571



The valve which controls the actuator's work.

Abrasive nozzle – boron carbide 3mm

4044



Abrasive nozzle – boron carbide, internal diameter 3mm.

Abrasive nozzle – boron carbide 4mm

4045



Abrasive nozzle – boron carbide, internal diameter 4mm .

Abrasive nozzle – boron carbide 5mm

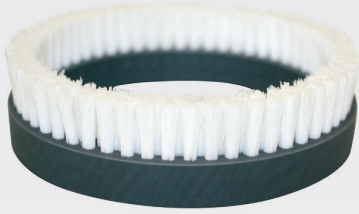
4046



Abrasive nozzle – boron carbide, internal diameter 5mm .

Two-row brush - short hair

5127



Two-row brush - short hair.

Three-row brush - short hair

5128



Three-row brush - short hair.

Three-row brush - long hair

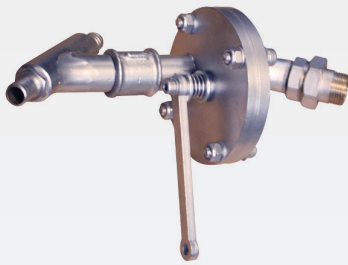
2031



Three-row brush - long hair.

FSV disk valve

0128



Disk valve which controls the flow of abrasive from the tank.

D2 actuator

0477



It controls the work of the disk valve.

40' brown fused alumina

0035



40' brown fused alumina, for sandblasting in stone or for blasting metal structures. Bag: 25 kg.

Nozzle frame sleeve

0214



Connects nozzle frame with the head.

Mushroom valve

4089



The valve which opens the flow of the abrasive from the pressure tank.

Vacuum head (small)

0709



Vacuum head, small, with motor.

Air filter cartridge Junior Plus

2050



Air filter cartridge Junior Plus.

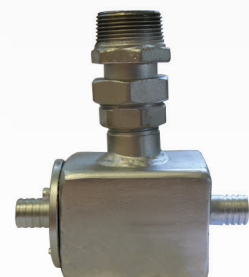
Boron carbide nozzle frame

4020



Boron carbide nozzle frame.

Abrasive cube valve



Abrasive cube valve.