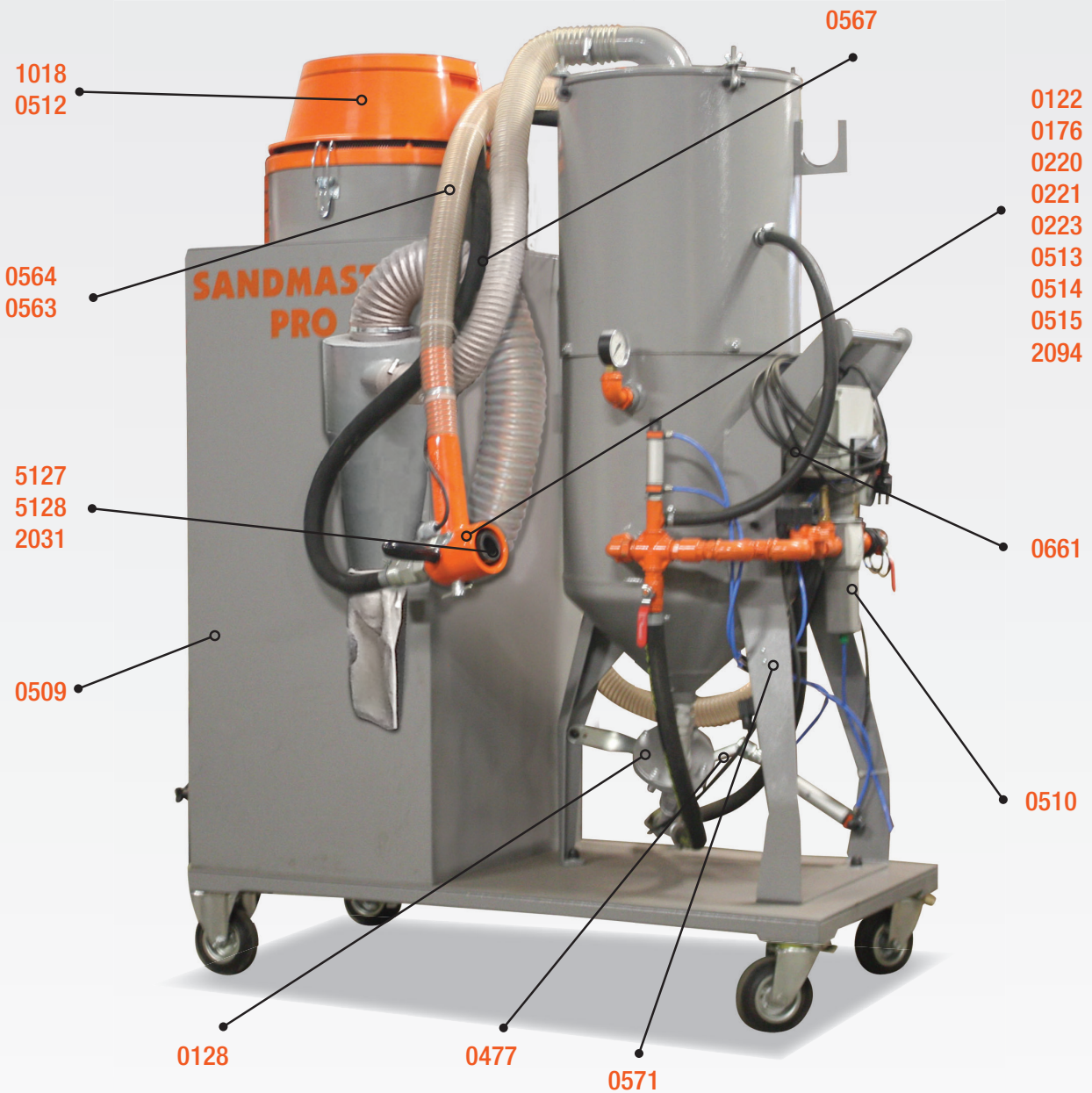


Sandmaster Pro



Head (cast)

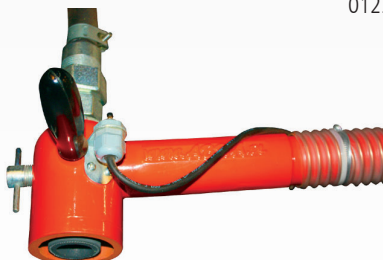
2094



Sandblasting head for Sandmaster Plus and Sandmaster Pro sandblasting machines (aluminium cast).

Complete head

0122



complete sandblasting head for Sandmaster Plus and Sandmaster Pro sandblasting machines (aluminium cast).

Air filter cartridge

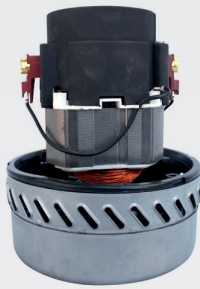
0509



filter for Sandmaster Pro sandblasting machine.

1200W suction motor

1018



Air suction motor situated in the head of the vacuum.

Head cover (rubber)

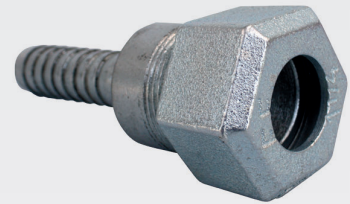
5125



Sandblasting head cover (rubber, 110 mm long).

Nozzle frame

0220



Sandblasting nozzle frame situated in the sandblasting head.

Nozzle fastening

0221



It connects the nozzle frame with the head, it holds the nozzle frame.

Abrasive rubber hose

0567



Rubber hose which supplies abrasive to sandblasting head.

Air suction hose

0562



The hose which pipes air together with abrasive from the sandblasting head to the tank.

Air suction hose

0563



The hose which pipes air together with abrasive from the sandblasting head to the tank.

1/2 inch G filter pressure regulator

0510



The valve which controls pressure at the outlet and purifies compressed air. It is fitted with a dehydrator and a gauge.

3/4 inch electrovalve

0661



The valve which controls airflow in the circuit.

Electrovalve actuator

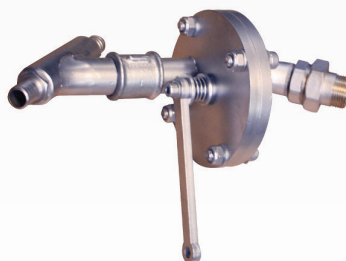
0571



The valve which controls the actuator's work.

FSV disk valve

0128



Disk valve which controls the flow of abrasive from the tank.

Short nozzle

0223



Nozzle that forms air stream.

**Abrasive nozzle – boron carbide
4mm**

5113



Abrasive nozzle – boron carbide 4mm.

**Abrasive nozzle – boron carbide
5mm**

5114



Abrasive nozzle – boron carbide 5mm.

**Abrasive nozzle – boron carbide
6mm**

5115



Abrasive nozzle – boron carbide 6mm.

Two-row brush - short hair

5127



Two-row brush - short hair.

Three-row brush - short hair

5128



Three-row brush - short hair.

Three-row brush - long hair

2031



Three-row brush - long hair.

Vacuum head (large)

0512



Vacuum head with two motors.

D2 actuator

0477



It controls the work of the disk valve.

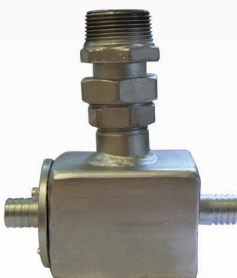
40' brown fused alumina

0035



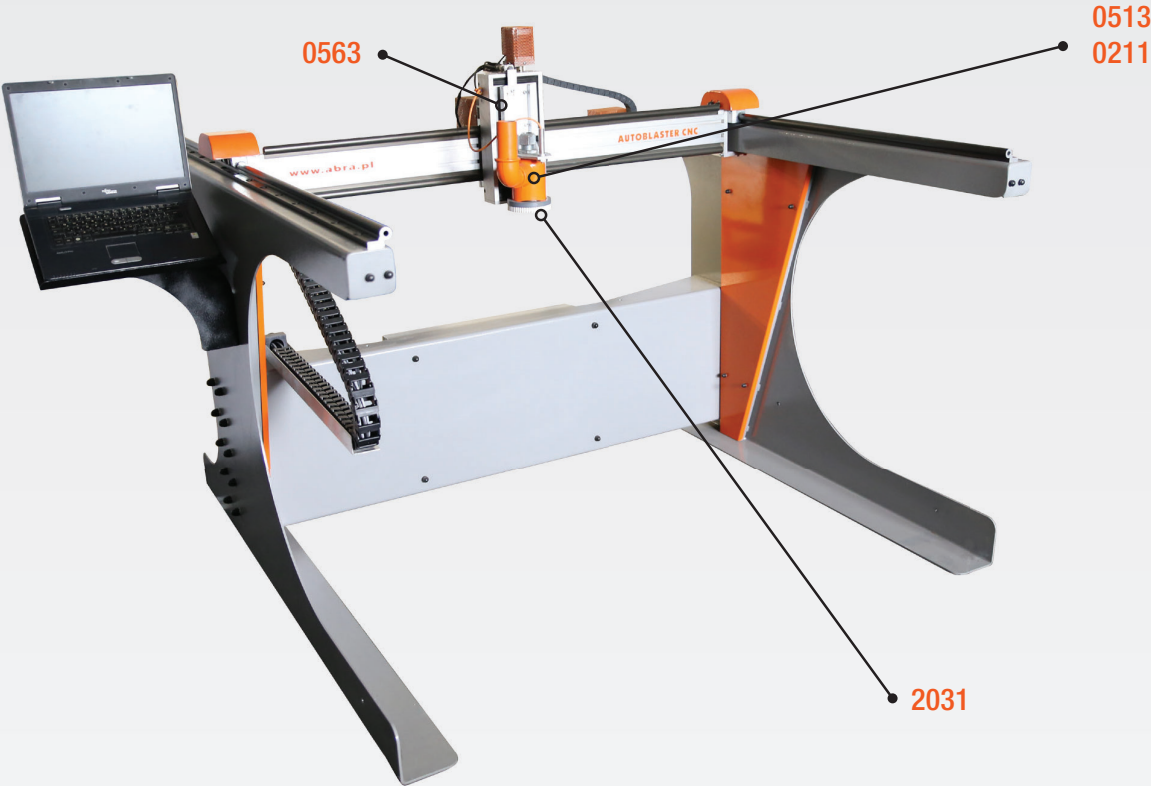
40' brown fused alumina, for sandblasting in stone or for blasting metal structures. Bag: 25 kg.

Abrasive cube valve



Abrasive cube valve.

Automatic tables for sandblasting



Head (casting)

Complete head

Air suction hose



Sandblasting head for sandblasting table (aluminium casting).

Complete sandblasting head for sandblasting table (aluminium casting) - aluminium casting + fittings.

The hose which pipes air together with abrasive from the sandblasting head to the tank.

Abrasive rubber hose

Three-row brush - long hair



Rubber hose which supplies abrasive to sandblasting head.

Three-row brush - long hair.