

v1.2

P U R E

T O U C H

USER GUIDE

ROAD ANGEL[™]

Introduction

Thank you for choosing the Pure Touch, from Road Angel. As our roads become busier, more congested and more regulated, staying alert to road and traffic conditions is a challenge to everyone. Even the most conscientious driver can have a momentary lapse of concentration that could easily lead to an accident or a fine and points.

The Road Angel Pure Touch requires a subscription to function and the Pure Touch is supplied with a complimentary, limited, subscription. There are various subscription options available, 12, 24 and 36 months

LIVE DATA: The LIVE DATA subscription is required to get all the great features and benefits from the Alerts Database and Road Speed Library.

LIVE DATA + SMART MOTORWAYS: The SMART MOTORWAYS subscription is an additional "bolt-on" that brings real time live gantry variable speed limit information to the Pure.

To purchase a subscription package, visit your online account at <https://www.roadangelgroup.com> or call **0330 320 3030**

The safety of you and your passengers is our prime consideration and we trust that for all the miles you drive, your Road Angel Pure Touch will enhance the safety and enjoyment of your journey. We are pleased to have you as a valued customer and hope you will be delighted with your Road Angel Pure Touch. Having listened to our customers we think the new features will make this product your perfect driving companion.

Professional Installation Available

Contact us on 0330 320 3030
to find your nearest qualified fitter

Contents

Introduction	2
Contents Page	3
What's in the box	4
Getting Started.....	5-7
Anatomy.....	8
Display Elements	9
Alert Icons	10
Vehicle Installation.....	11
Placement and Safety.....	12-13
Background Information.....	14-15
Warnings and Disclaimers	16-17
Limited Warranty.....	18-19

What's In The Box



Pure Touch



Dash Mount



USB-C Charging Cable



3 Pin Plug



Dual Type Adapter



Reset Pin



User Guide



Cleaning Cloth



3M Sticker



Carry Pouch

Getting Started ¹

For safety reasons the Pure Touch is shipped with the battery in a discharged state. To charge and condition the battery, the unit must be charged for 2-3 hours, on the supplied mains or vehicle charger.

During this initial charge this an ideal opportunity to update the on board firmware (if required) safety camera data and road speed limits.



Plug the Pure Touch into power using the accessories provided.



Search for Road Angel on your chosen appstore or use QR code below.

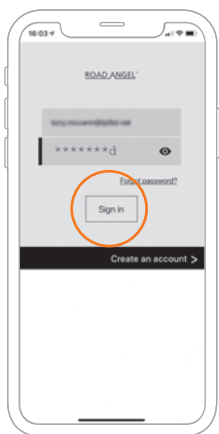


Download, install and open the app then follow the instructions.



Getting Started ²

On your smart phone open the APP and sign in, using your online account details or create an account.



Once you sign in the set up wizard will start.

- In the wizard you can:
- Link your device to the app
- Assign your device to a vehicle
- Choose vehicle type
- Configure the Wi-Fi network
- Device sounds and settings

To update the on-board firmware the device must be linked to the Road Angel app and the Wi-Fi network configured. (For comprehensive instructions please refer to the on line user guide)

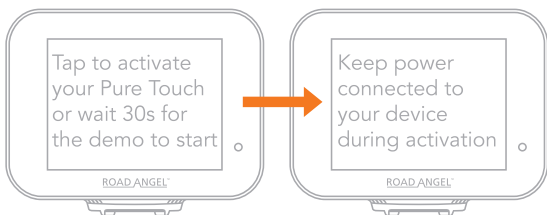
Once the wizard has completed switch on the unit and follow the on screen instructions .



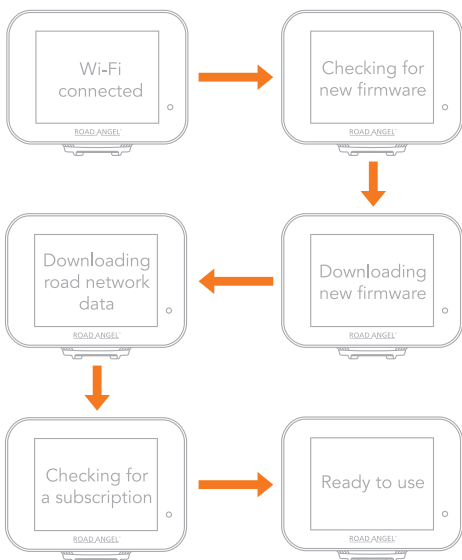
Getting Started ³

Once the unit is powered it will connect to Wi-Fi and update the firmware, safety camera data and road speed data.

The update process can take a while depending, on the strength and quality of the Wi-Fi network



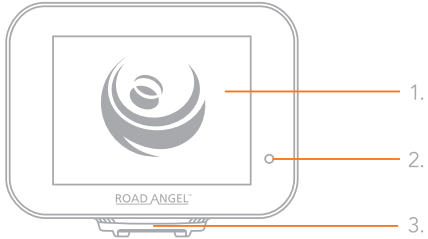
Message hierarchy:



Anatomy

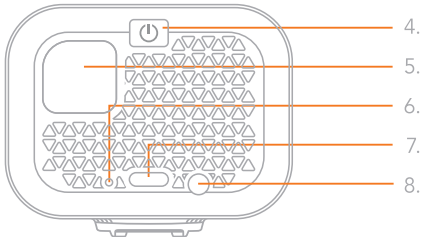
Meet your Pure Touch

Front Elevation



1. LCD Touch Screen
2. Ambient Light Sensor
3. Base Connector for Dash Mount or Windscreen Mount (sold separately).

Rear Elevation



- | | |
|----------------------|--|
| 4. Power Button | 7. USB Type C Power Input |
| 5. Dual Laser Sensor | 8. External GPS Port (MCX) |
| 6. Reset Pin | (external GPS antenna sold separately) |

Display Elements

Display Meanings

Home Screen



- | | | |
|------------------|----------------|-------------------|
| 1. Time | 4. Speed Units | 7. GPS Lock |
| 2. Menu | 5. Road Speed | 8. GPRS Strength |
| 3. Current Speed | 6. Battery | 9. Wi-Fi Strength |
| | | 10. Volume/Mute |

Alert Mode



- | |
|-------------------------|
| 11. Alert Type |
| 12. Proximity Indicator |

Alert Icons

Icon Meanings



Fixed Speed
Camera



Average Speed
Camera



Mobile
Camera Van



Live Mobile
Camera Van



Red Light
Camera



Dual Red
Light Camera



Bus Lane
Camera



Laser
Detection



School
Zone



Congestion
Zone



Blackspot
Hazard



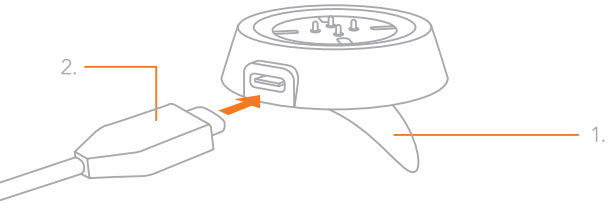
Ungated
Railway



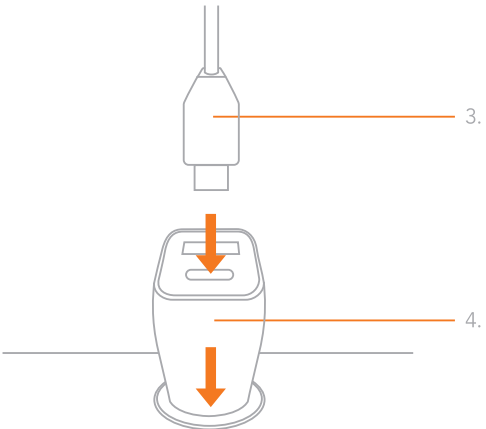
Low Bridges

Vehicle Installation

Vehicle setup



1. Peel off the protective film.
2. Plug one end of the USB Type C power cable into the Pure Touch dash mount and attach it in an appropriate location on the vehicle's dashboard. Take care not to obscure the driver's view of the road.



3. Plug the other end of the USB Type C power cable into the USB Type C port on the 12V car power adapter.
4. Plug the 12V car power adapter into the vehicle's 12V power accessory socket.

Placement & Safety ¹

Road Angel products are aimed at increasing driver safety awareness and should always be considered a secondary, as an aid, to the primary purpose of driving a motor vehicle. Driving within the speed limits at all times and within the limitations of the road conditions and your abilities is paramount. Road Angel takes no responsibility for the use of its products for purposes other than those stipulated.

PLACEMENT

Position your Road Angel Pure Touch suitably on your dashboard, so that it does not impair your windscreen visibility. We recommend either to position the Pure Touch centrally or nearest the driver's side A Pillar. The Pure Touch should be fitted securely and all cables must be installed correctly via locations that do not impact the vehicle functions, controls or the intended operation of any air bag zones.

UV/solar reflective screens block GPS signals from entering the vehicle and may affect the operation of your Pure Touch. Please allow extra time for your device to acquire its position. Heated screens can also affect GPS signal strength. An optional external GPS antenna (sold separately) can be used to aid in the GPS signal acquisition. Most vehicles fitted with a UV/solar reflective screen have a defined section behind the rear-view mirror where you can fit the antenna.

Please remember that direct sunlight and excessive heat exposure can damage electronics, be mindful of this and remove the Pure Touch from the dashboard or windscreen when not in use.

Placement & Safety ²

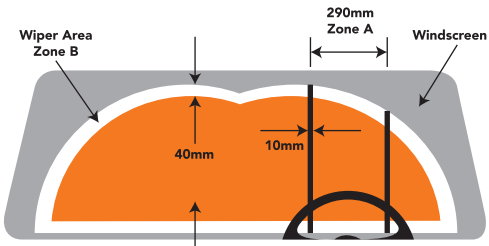
MOT AND SAFETY

When your vehicle undergoes an MOT examination, the Pure Touch or any other dashboard or windscreen mounted device should either be temporarily removed or adhere to the rules and regulations of the MOT examination's visibility parameters. The Wiper Blade coverage area of the windscreen should always be left in clear visibility and the driver should have an unobstructed view of the road.

The diagram below is based on the legislative requirements in Great Britain relating to obstructions which could obscure the view through a window in a vehicle.

Zone A is defined as a vertical area 290mm wide (350 wide on vehicles over 3.5 tonnes), centred on the steering wheel and contained within the swept area of the windscreen. Obstructions must not encroach further than 10mm into zone A.

Zone B is defined as the remainder of the swept area of the windscreen. Obstructions must not encroach further than 40mm into zone B.



Obstructions must not encroach into this area.

Background Information ¹

About Global Positioning Satellites (GPS)

Operational since 1993, 33 satellites orbit the earth at a height of 11,000 miles. At any given point on the globe, at least 4 satellites are in view at any one time. Using sophisticated aeriols and triangulation techniques, devices such as the Pure Touch can calculate your position to within 5-10 metres. The Pure Touch may lose the GPS satellite signal temporarily owing to tunnels, tall buildings, bridges, dense foliage or adverse weather conditions. When you are clear of the obstruction, the Pure Touch should reacquire satellite signals in a few seconds.

Background Information ²

Laser Detection

How mobile laser traps operate

Police Laser Guns work by firing a pulsed beam of light at a vehicle and measuring the time taken for it to return - this can take as little as a third of a second. The beam is conical: at greater distances from the gun, it is wider and more diffuse. However, at short distances (less than 200m); the enforcement officer can be very precise in targeting a vehicle. Although any part of a vehicle can be targeted, in most cases, the enforcement officer will aim at the number plate because it is vertical to the road.

Laser detection and the law

At present, laser sensors and detectors are not illegal in the UK. However, in Europe and other countries, laws are different and laser detection devices, including the Pure Touch may be illegal. Punishments for carrying such a device (even if it is not in use) range from imprisonment, confiscation of vehicle, a driving ban and/or a heavy fine. Always check the laws of the country you are driving in.

Warnings & Disclaimers ¹

USE THE ADVISORY SPEED LIMIT FOR GUIDANCE ONLY

Any road speed limit can change without prior notice or consultation, for example, in temporary road works. It always remains important for drivers to constantly re-evaluate and be aware of the road limit. Speed limits may vary according to vehicle type and class.

All Road Angel products are designed to provide the driver with a high visibility speedometer reading within your field of vision. Although GPS speedometers are known to be highly accurate at steady speed, atmospheric conditions and hindered skyward visibility (e.g. tunnels) can adversely affect accuracy. In all situations, drivers should always refer to the vehicle's speedometer, which is known to fall within approved guidelines of accuracy in all situations and be aware of the applicable speed limit.

BEFORE INSTALLATION

This Road Angel product requires a subscription to keep the device connected in real time with our servers and live extensive databases.

Ensure that the device firmware is upgraded to the latest version available for download from our smart phone app, website or other methods provided by Road Angel. During the lifespan of Road Angel products, it is important to keep firmware up to date.

Road Angel products come complete with high quality accessories; these must be used with the device to ensure optimal performance. Use of third party or non-genuine accessories may cause damage or performance issues and potentially void the product warranty.

USE WITH CARE

It is your responsibility to use best judgment, due care and attention when using this device. Don't allow interaction with this device to distract you while driving. Minimise the time spent looking at the device screen while driving. You are responsible for observing laws that limit or prohibit the use of mobile phones or other electronic devices.

In Phase International Ltd does NOT guarantee the error-free operation of this device nor the accuracy of speed limits provided and shall not be liable for any penalties arising from your failure to comply with applicable laws and regulations.

Always obey applicable laws and road signs, especially those relating to speed limits.

Warnings & Disclaimers ²

PREREQUISITES

The ability of Road Angel products and software to work properly depends on several products and services made available by third parties over which Road Angel has no control, including but not limited to; internet, cellular connectivity, mobile device and operating system compatibility, proper installation and maintenance. Road Angel shall not be liable for any damages caused by actions or omissions of third parties.

Certain products or software manufactured, sold or licensed by Road Angel, connect to the internet to send and/or receive data ("internet of things" or "IOT" products). Any continued use of an IOT product after Road Angel has ceased supporting that IOT product (e.g., through notice that Road Angel no longer provides firm ware updates or bug fixes) may result in reduced performance, malfunction, and/or increased vulnerability to hacking, compromise and/or circumvention.

IMPORTANT

Battery operated devices and accessories have a limited battery life. While these products may be designed to provide some warning of imminent battery depletion, the ability to deliver such warnings is limited and such warnings may not be provided in all circumstances. Periodic testing of the system in accordance with product documentation is the only way to determine if all device and accessories are functioning properly.

Direct sunlight and excessive heat exposure can damage electronics, be mindful of this and remove the Pure Touch from the dashboard or windscreen when not in use.

Road Angel has made every effort to ensure that all the information contained in this manual is accurate and reliable. However, the information is subject to change without notice.

Road Angel assumes no responsibility for any damage or injury resulting from the use of this product.

Under no circumstances should Road Angel products be operated by the driver whilst the vehicle is in motion.

In Phase International Ltd. Limited Warranty Road Angel Pure Touch Safety Camera Detector

THIS LIMITED WARRANTY CONTAINS IMPORTANT INFORMATION ABOUT YOUR RIGHTS AND OBLIGATIONS, AS WELL AS LIMITATIONS AND EXCLUSIONS THAT MAY APPLY TO YOU.

YOUR RIGHTS AND THIS LIMITED WARRANTY

This Limited Warranty gives you specific legal rights. You may also have other legal rights that vary by state, province or jurisdiction. The disclaimers, exclusions and limitations of liability under this Limited Warranty will not apply to the extent prohibited by applicable law. For a full description of your legal rights, you should refer to the consumer protection laws applicable in your jurisdiction, and you may wish to contact a relevant consumer advisory service. This Limited Warranty is in addition to your legal rights in relation to the Products and does not affect your statutory rights. In particular, this Limited Warranty does not limit the legal warranty obligations imposed on the seller and you may claim your rights under the legal warranty against the seller.

WHAT THIS LIMITED WARRANTY COVERS: PERIOD OF COVERAGE

In Phase International Ltd. DB House, Rani Drive, Nottingham, United Kingdom ("Road Angel") warrants to the owner of the enclosed Road Angel-branded product contained in this box that the product ("Product") will be free from defects in materials and workmanship for a period of one (1) year from the date of delivery following the original retail purchase (the "Warranty Period"). If the Product fails to conform to this Limited Warranty during the Warranty Period, Road Angel will, at its sole discretion, either (a) repair or replace any defective Product or component; or (b) accept the return of the Product and refund the money actually paid by the original purchaser for the Product. Repair or replacement may be made with a new or refurbished product or components, at Road Angel's sole discretion, to the extent that this is permitted by local laws in your jurisdiction. If the Product or a component incorporated within it is no longer available, Road Angel may, at Road Angel's sole discretion, replace the Product with a similar product of similar function. Any Product that has either been repaired or replaced under this Limited Warranty will be covered by the terms of this Limited Warranty for the longer of (a) ninety (90) days from the date of delivery of the repaired Product or replacement Product, or (b) the remaining Warranty Period. This Limited Warranty is transferable from the original purchaser to subsequent owners, but the Warranty Period will not be extended in duration or expanded in coverage for any such transfer.

TOTAL SATISFACTION RETURNS POLICY

If you are the original purchaser of the Product and you are not satisfied with this Product for any reason, you may return it, at your cost, in its original condition, within thirty (30) days of the original purchase and receive a full refund.

WARRANTY CONDITIONS: HOW TO GET SERVICE IF YOU WANT TO CLAIM UNDER THIS LIMITED WARRANTY

Before making a claim under this Limited Warranty, the owner of the Product must (a) visit roadangelgroup.com/customer/account during the Warranty Period to provide notice of their warranty claim and describe the alleged failure, and (b) comply with Road Angel's (or its authorised distributor's) return delivery instructions. Road Angel will have no warranty obligations with respect to a returned Product if it determines, at its reasonable discretion after examination of the returned Product, that the Product is an Ineligible Product (defined below). Road Angel will bear all costs of return delivery to the owner.

WHAT THIS LIMITED WARRANTY DOES NOT COVER

This Limited Warranty does not cover the following (collectively "Ineligible Products"): (i) Products marked as "sample" or "Not for sale", or sold "AS IS"; (ii) Products that have been subject to: (a) modifications, alterations, tampering, or improper maintenance or repairs; (b) handling, storage, installation, testing or use not in accordance with any user guide, placement guidelines or other instructions provided by Road Angel; (c) abuse or misuse of the Product; (d) breakdowns, fluctuations or interruptions in the electricity supply or the telecommunications network; or (e) Acts of God, including, but not limited to, lightning, flood, tornado, earthquake or hurricane; or (iii) any non-Road Angel-branded hardware products, even if packaged or sold with Road Angel hardware. This Limited Warranty does not cover consumable parts, including batteries, unless damage is due to defects in materials or workmanship of the Product or software (even if such consumable parts or software are packaged or sold with the Product). Road Angel recommends using only authorised service providers for maintenance or repair. Unauthorised use of the Product or software can impair the Product's performance and may invalidate this Limited Warranty.

DISCLAIMER OF WARRANTIES

EXCEPT AS STATED ELSEWHERE IN THIS LIMITED WARRANTY, AND TO THE MAXIMUM EXTENT PERMITTED BY APPLICABLE LAW, ROAD ANGEL DISCLAIMS ALL EXPRESS, IMPLIED AND STATUTORY WARRANTIES AND CONDITIONS WITH RESPECT TO THE PRODUCT, INCLUDING THE IMPLIED WARRANTIES OF MERCHANTABILITY AND FITNESS FOR A PARTICULAR PURPOSE. TO THE MAXIMUM EXTENT PERMITTED BY APPLICABLE LAW, ROAD ANGEL ALSO LIMITS THE DURATION OF ANY APPLICABLE IMPLIED WARRANTIES OR CONDITIONS TO THE DURATION OF THIS LIMITED WARRANTY.

LIMITATION OF DAMAGES

IN ADDITION TO THE WARRANTY DISCLAIMERS STATED ELSEWHERE IN THIS LIMITED WARRANTY, IN NO EVENT WILL ROAD ANGEL BE LIABLE FOR ANY INDIRECT, CONSEQUENTIAL, INCIDENTAL, EXEMPLARY OR SPECIAL DAMAGES, INCLUDING ANY DAMAGES FOR LOST DATA OR LOST PROFITS, ARISING FROM, OR RELATING TO THIS LIMITED WARRANTY OR THE PRODUCT, AND ROAD ANGEL'S TOTAL CUMULATIVE LIABILITY ARISING FROM, OR RELATED TO THIS LIMITED WARRANTY OR THE PRODUCT WILL NOT EXCEED THE AMOUNT ACTUALLY PAID FOR THE PRODUCT BY THE ORIGINAL PURCHASER.

LIMITATION OF LIABILITY

IF YOU CHOOSE TO USE THEM, ONLINE SERVICES OFFERED BY ROAD ANGEL PROVIDE YOU WITH INFORMATION ("PRODUCT INFORMATION") REGARDING YOUR ROAD ANGEL PRODUCTS OR OTHER PERIPHERALS CONNECTED TO YOUR PRODUCTS ("PRODUCT PERIPHERALS"). THE TYPE OF PRODUCT PERIPHERALS THAT MAY BE CONNECTED TO YOUR PRODUCT MAY CHANGE FROM TIME TO TIME. WITHOUT LIMITING THE GENERALITY OF THE DISCLAIMERS ABOVE, ALL PRODUCT INFORMATION IS PROVIDED FOR YOUR CONVENIENCE, "AS IS" AND "AS AVAILABLE". ROAD ANGEL DOES NOT REPRESENT, WARRANT OR GUARANTEE THAT PRODUCT INFORMATION WILL BE AVAILABLE, ACCURATE OR RELIABLE, OR THAT PRODUCT INFORMATION OR USE OF THE SERVICES OR PRODUCT WILL PROVIDE SAFETY IN YOUR HOME. YOU USE ALL PRODUCT INFORMATION, THE SERVICES AND THE PRODUCT AT YOUR OWN DISCRETION AND RISK. YOU WILL BE SOLELY RESPONSIBLE FOR (AND ROAD ANGEL DISCLAIM) ANY AND ALL LOSS, LIABILITY OR DAMAGES, INCLUDING TO YOUR WIRING, VEHICLE, FIXTURES, ELECTRICITY, HOME, PRODUCT, PRODUCT PERIPHERALS, COMPUTER, MOBILE DEVICE, AND ALL OTHER ITEMS AND PETS IN YOUR HOME, RESULTING FROM YOUR USE OF THE PRODUCT INFORMATION, SERVICES OR PRODUCT. PRODUCT INFORMATION PROVIDED BY THE SERVICES IS NOT INTENDED AS A SUBSTITUTE FOR DIRECT MEANS OF OBTAINING THE INFORMATION. FOR EXAMPLE, A NOTIFICATION PROVIDED THROUGH THE SERVICE IS NOT INTENDED AS A SUBSTITUTE FOR AUDIBLE AND VISIBLE INDICATIONS ON THE ROAD OR IN THE VEHICLE AND ON THE PRODUCT.

VARIATIONS THAT MIGHT APPLY TO THIS LIMITED WARRANTY

Some jurisdictions do not allow limitations on how long an implied warranty lasts or specific exclusions, so some of the limitations set out above may not apply to you. If any court or relevant authority decides that any of these limitations is unenforceable, it should be deemed modified to the minimum extent necessary to make it enforceable. If this modification is not possible, the relevant provision should be deemed deleted. Any modification or deletion will not affect the validity of the rest of this Limited Warranty.

CONTACT INFORMATION

Please direct any questions about this Limited Warranty to In Phase International Ltd. at the address located at: roadangelgroup.com/contact

Designed, engineered and manufactured by Road Angel Group
DB House, Rani Drive, Nottingham, NG5 1RF, United Kingdom

RoadAngelGroup.co.uk



Product names, logos, brands, and other trademarks featured or referred to within Road Angel Group products and services are the property of their respective trademark holders. These trademarks holders are not affiliated with Road Angel Group or our products. They do not sponsor or endorse our materials. The "Apple" name, the Apple logo, iPhone, and iPad are trademarks of Apple Inc. registered in the U.S. and other countries. App Store is a service mark of Apple Inc. The "Android" name, the Android logo, the "Google Play" brand, and other Google trademarks, are property of Google LLC. TM and Copyright 2020 Road Angel. All rights reserved.