

# VNM SHIFTER

## Quick Guide



### Content



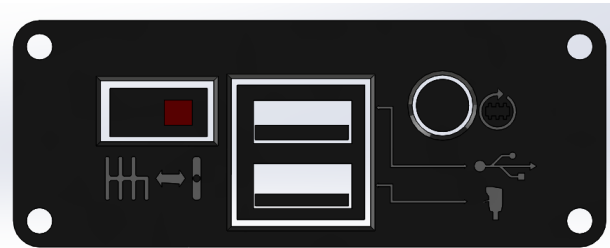
- 1. Shifter with grid SEQ
- 2. Grid H
- 3. Knob SEQ
- 4. Knob H
- 5. USB cable
- 6. Hexagon alloy key
- 7. C Clamp

### Connection



The connection is placed on the low-behind of shifter.  
The icon is:

- Plug in USB cable to connect to PC
- H shifter mode (select by switch to H)
- Sequence mode
- Plug in truck knob
- Button to switch *update firmware/ play Mode*

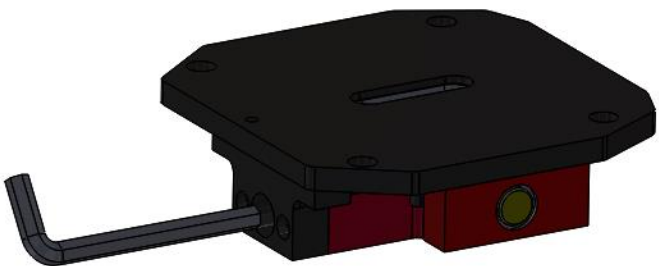


### Adjust Spring

Adjust Y axis:  
✓ Clockwise to increase force



Adjust SEQUENCE grid:  
✓ Clockwise to increase force



### Table Clamp



### Exchange plate & Knob

