

art+dinox

Catalogue

Content	Page No
Arttd'inox Kitchens	2
More about the founder	3-5
Global Partnership	6
Features	10-22
Shades/Textures and Finishes	23- 32
Shapes we offer	33-37
Choose Arttd'inox Kitchens	39
Arttd'inox Wardrobes	41-45
Happy Clients	46
Designers Recommend	47-49
Our Presence	50

Arttd'inox

From the house of Jindal, Arttd'inox is a luxury home lifestyle brand founded by Deepika Jindal. With an experience spanning over two decades. We are dedicated to revolutionizing stainless steel artistry in the Indian lifestyle landscape by introducing innovative and distinctive products. The epitome of sophistication, innovation, and elegance. Our modern designs seamlessly blend cutting-edge technology with fine artistry, creating functional and stylish kitchens that elevate the heart of every home.

Luxury driven by
visionary leadership

Founder
Deepika Jindal



Founded by Mrs. Deepika Jindal, Creative and Managing Director of Jindal Lifestyle Limited, redefines art in stainless steel.

Every Arttd'inox Kitchen & Wardrobe embodies fine craftsmanship, cutting-edge technology, and exquisite artistry. Our bespoke designs are not just functional, but also reflect your lifestyle and personal taste, offering a blend of modernity and luxury.

**"An embodiment of visionary design,
modern luxury, and innovative artistry"**

Inspiring innovation through stainless artistry.

Our collection features innovative, stylish, and functional designs that seamlessly blend with modern spaces. With a wide range of vibrant colours, we offer quality, durability, and aesthetic appeal, while also safeguarding against potential risks like fire, termites, water damage, or harmful bacteria.

We welcome you to a space where art, innovation, and modern luxury come together to create an exceptional masterpiece.



Global Partnership

We tie up with some of the most prestigious global giants to ensure an exquisite fusion of superior quality and refined aesthetics.

SIEMENS

HÄFELE

Miele



hettich

blum

BOSCH







“Invest in higher living”





Inspired by safety Designed for style

Our stainless steel kitchens are designed to withstand high temperatures, resist termites, and prevent harmful bacteria build-up.

Eternal Bonds have
a new home





Fire-resistant

For a safe and worry-free kitchen experience





Water damage protection

To safeguard and ensure longevity

Child-friendly

Ensuring peace of mind
for families





Easy-to-clean surfaces

For convenient maintenance and cleanliness

Eco-friendly and sustainable

That promote a healthy and hygienic kitchen space





Low-maintenance durability

To withstand daily wear and tear without losing its charm

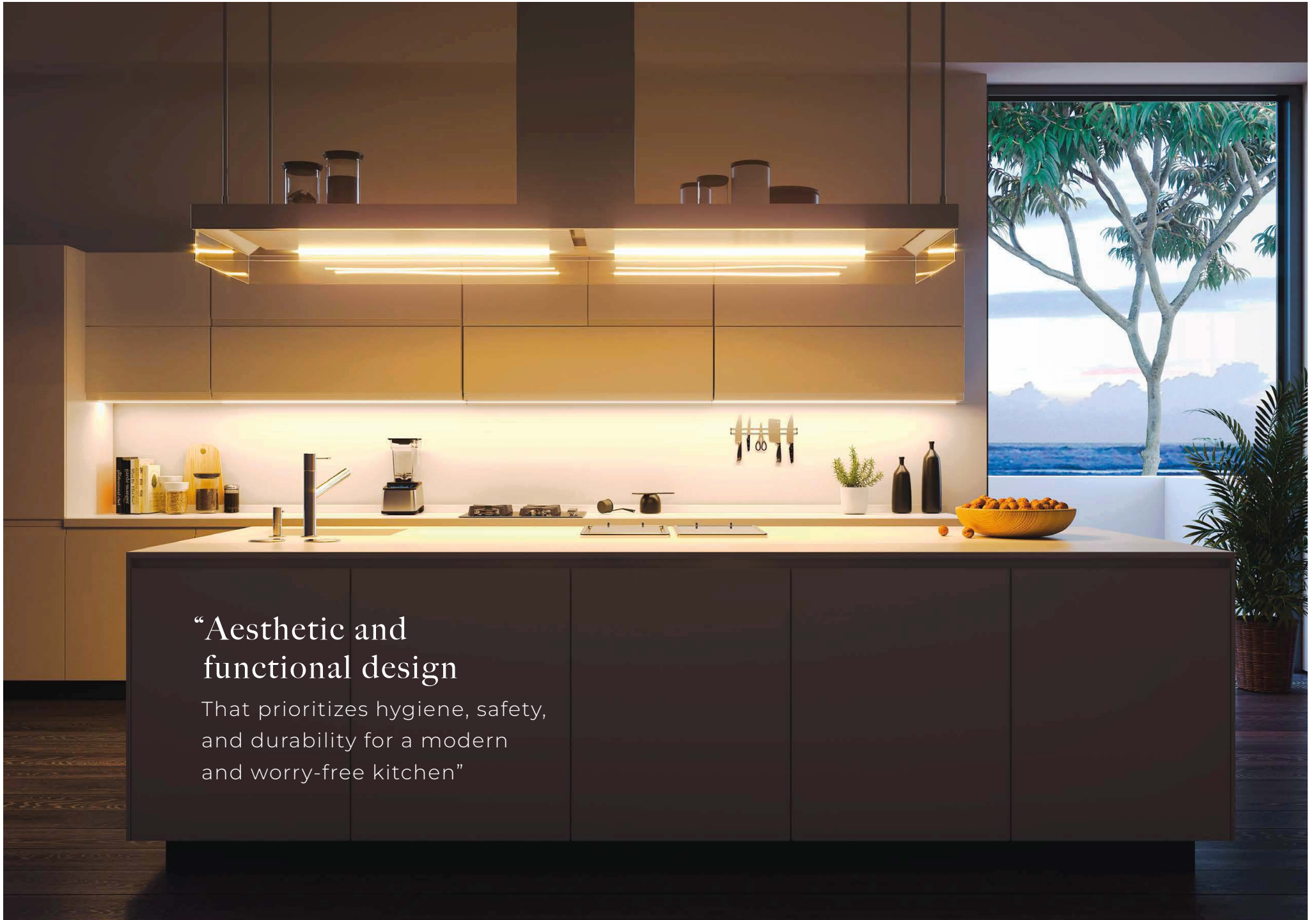
Corrosion-free

For a kitchen that's
forever new









“Aesthetic and
functional design

That prioritizes hygiene, safety,
and durability for a modern
and worry-free kitchen”



Dare to be different with Colourful creations

With our extensive palette of over 180 vibrant shades, you can infuse your kitchen with your unique personality and creativity.





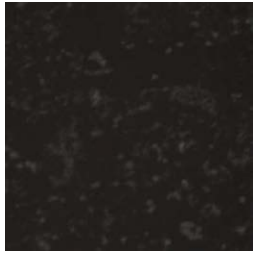
Create your very own
space of culinary delight
By picking your favorite colour
that screams you.





Unparalleled selection of over 180 shades and finishes





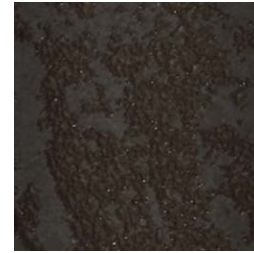
GRAPHITE EFFECT



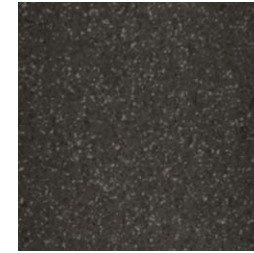
SATVRIO



ROVERE CALCE



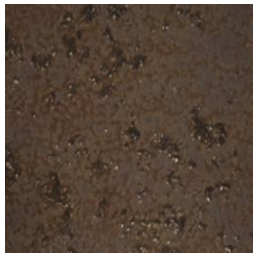
GREY OXIDE



DARK VEIN SCURA



NERO BLACK



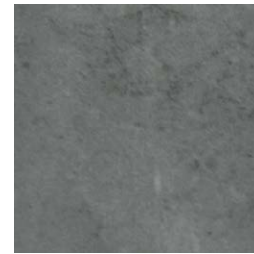
COPPER EFFECT



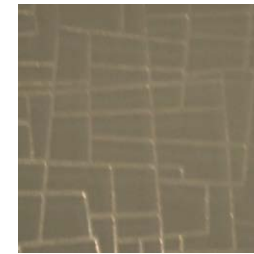
FEROE



ROVERE VISION



MILKY BIANCO



DESIGN BEIGE



CHALKY WHITE



NERO BIANCHE



IVORY MATT



GOLDEN MIRROR



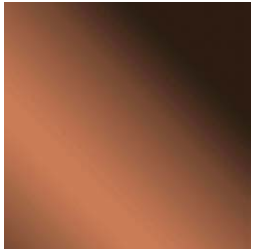
SANDY ROCCIA



WHITE MARBLE



BRONZE MIRROR



COPPER MIRROR



PEARL WHITE



PANTONE GREEN



LIGHT APRICOT



LIGHT APPRICOTA



HICKORY BROWN



GRAY CLAZE MIRROR



GLOSS GREEN



GLOSS IVORY



GLOSS RED



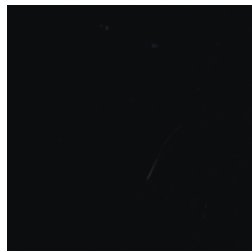
GLOSS YELLOW



GLOSS GRAY



GLOSS CARAMÉ



GLOSS BLACK



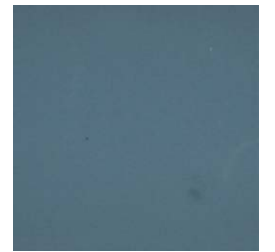
GLOSS BEIGE



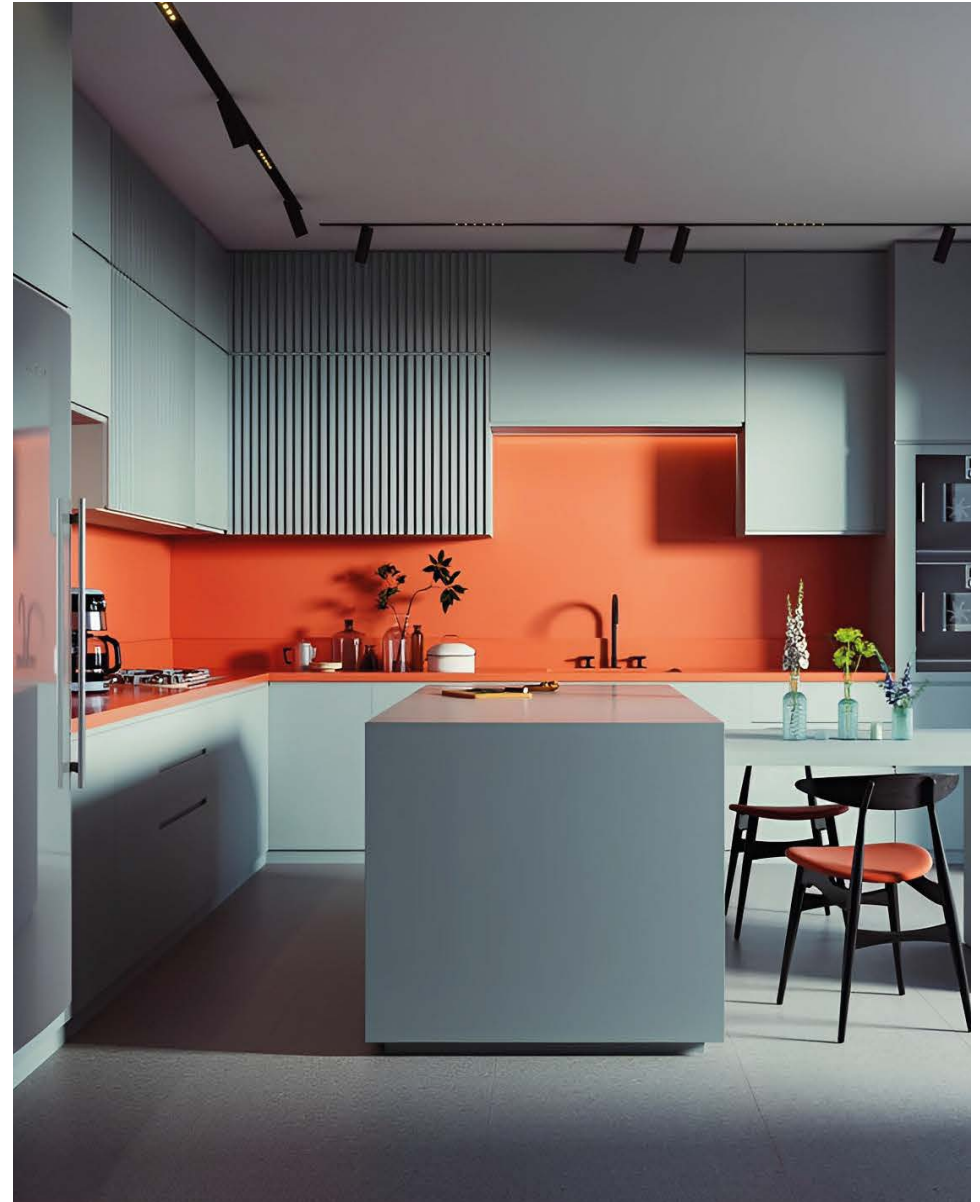
GLOSS AQUA



FLINT GRAY



FAIR HORIZON



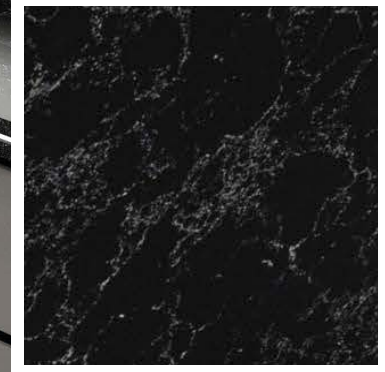


The inner carcass is constructed with robust and sturdy stainless steel of grade 204CU. The modular carcass is supported by stainless steel adjustable legs, capable of bearing weights up to 200 kg. The design accommodates any hardware.





MARBLE

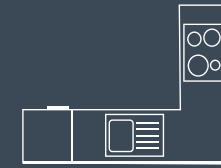


GRANITE



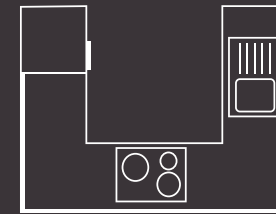
The humble straight kitchens

Make the most of compact spaces with simple yet super elegant straight kitchens.



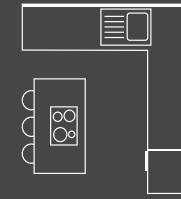
The modern L-shaped kitchens

For optimum storage that
creates a trendy decor.



The convenient U-shaped kitchen

For maximum storage possibilities with everything at your fingertips.



The fun Island kitchens

Creates a defined space
and becomes the heart
of the kitchen



The airy Parallel kitchens

With enough space on your plate, the design demands simplicity with class.



“Timeless style with Arttd’inox kitchens”

Why ‘Wood’ You

When there’s stainless steel

Wood carries an unquestioned old-world charm but stainless steel is modern hi-tech & long-lasting, its robust design prevents rust, corrosion, and kitchen termite, & is fire-resistant, adding safety & reducing repair costs, these are more than enough reasons to step out of the clichés & check-into a new era of stainless steel.













“

Without a doubt, I couldn't be happier with my decision to choose Arttd'inox Kitchens. Their stainless steel kitchens have exceeded my expectations in every way. From being termite-free and safe for my children, to the stunning design that adds a touch of luxury to my home, I am truly impressed. It's a testament to their commitment to quality and customer satisfaction. I highly recommend Arttd'inox Kitchens for anyone seeking a top-notch kitchen solution.

- Priya Sharma

”

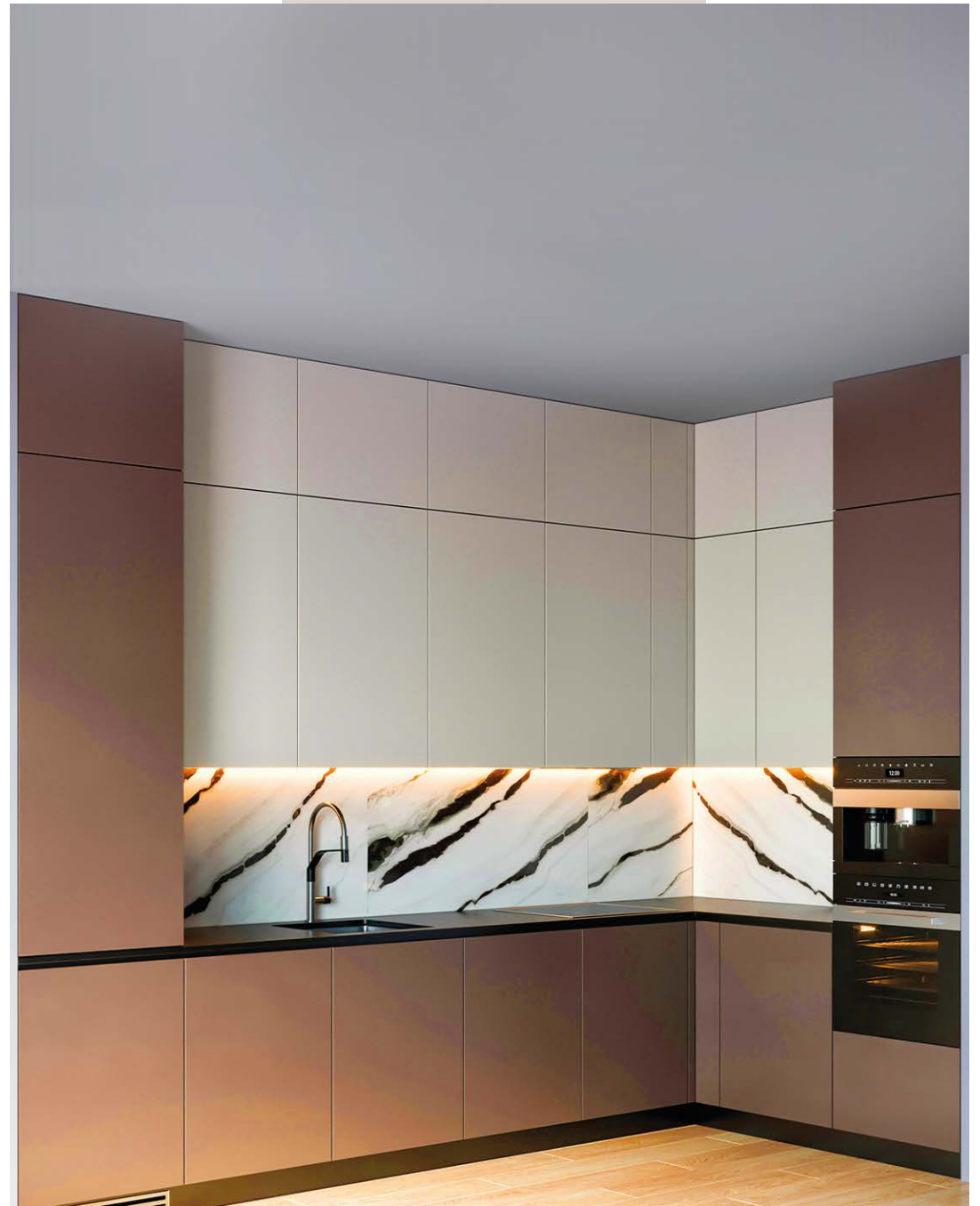


“

I wholeheartedly recommend Arttd'inox Kitchens without hesitation. The exceptional quality, breathtaking aesthetics, and ingenious functional design make them an absolute standout. Choosing your kitchens is an excellent decision that homeowners will cherish for years to come.

- Rajiv Gupta | Interior Designer

”

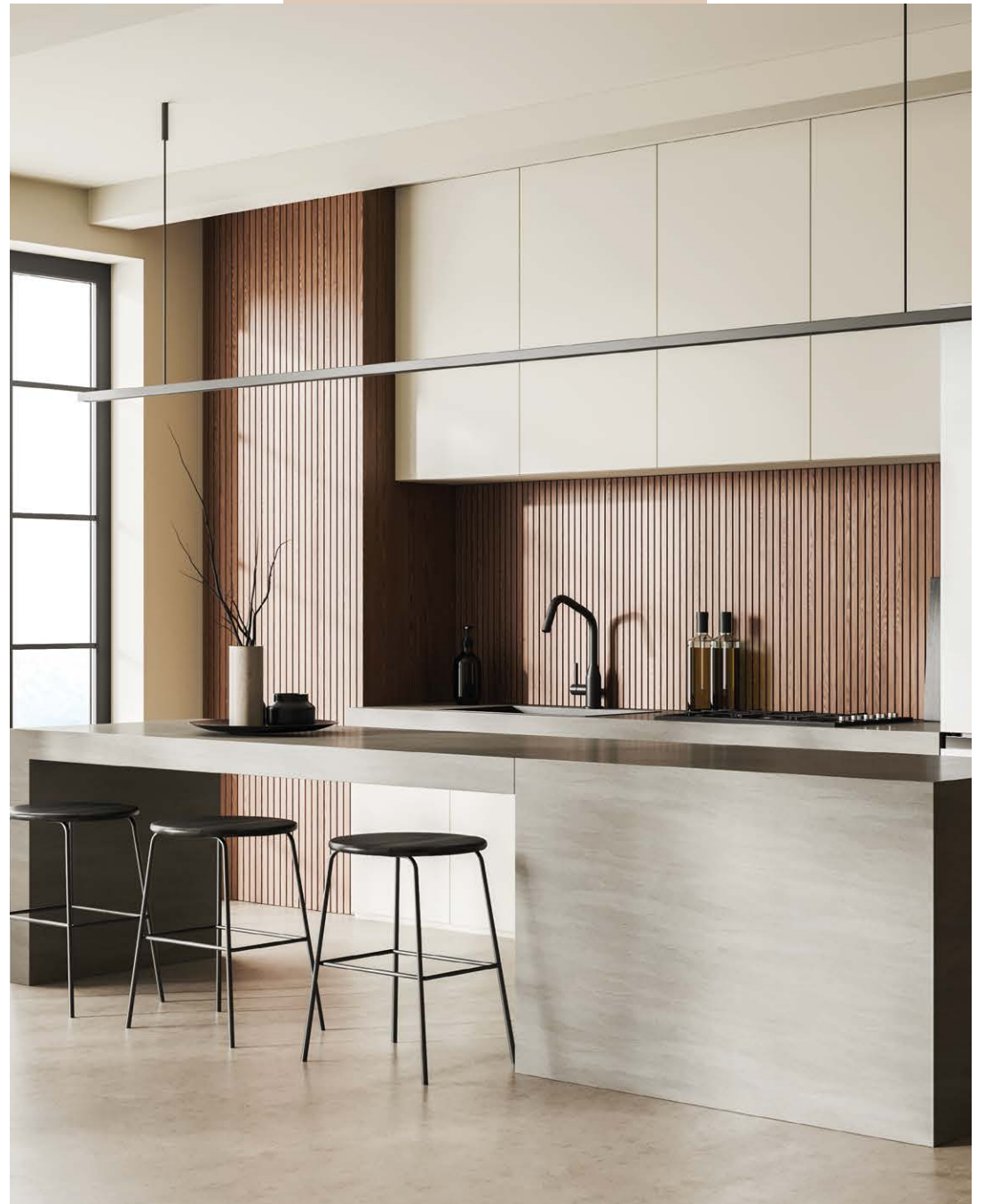


“

I'm absolutely thrilled with my decision to go with Arttd'inox Kitchens! The vibrant and modern design of their kitchens adds a delightful atmosphere that fills our space with positive energy. Their dedication to quality and customer satisfaction is evident in every aspect. If you're seeking a kitchen solution that radiates happy vibes while prioritizing the well-being of your children, I wholeheartedly recommend Arttd'inox Kitchens.

- Janvi Vala

”



Our company provides comprehensive after-sales service for our kitchens.

The kitchens are covered by a 10-year warranty against any manufacturing defects.

This means that if any issues arise due to defects in materials or workmanship, we will take full responsibility for repair or replacement.

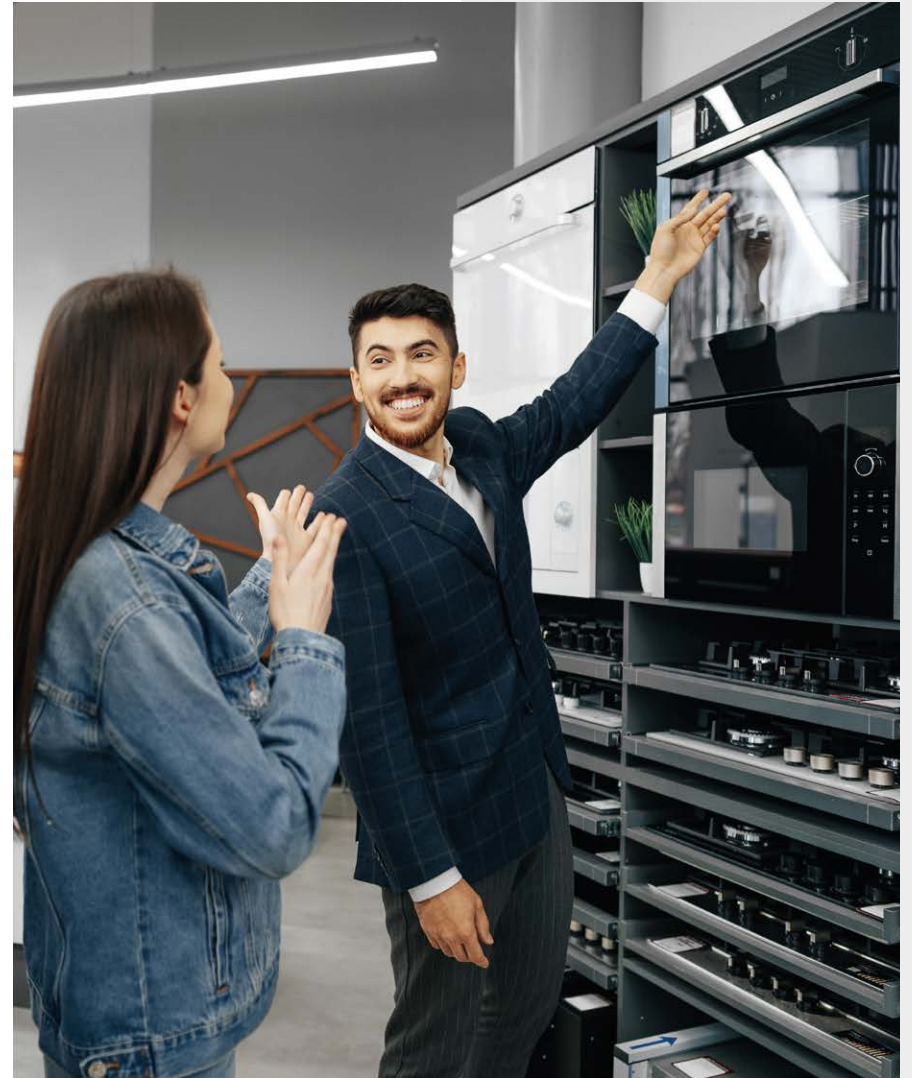
During the first two years of the warranty period, we offer 04 preventive services.

These services are aimed at ensuring that the kitchen is functioning optimally and to address any potential problems before they escalate. Our technicians will conduct inspections, perform maintenance tasks, and address any concerns you may have regarding the performance of the kitchen.

The warranty covers manufacturing defects, installation defects, and transportation defects. If any issues arise from these factors within the warranty period, we will rectify them at no additional cost to you.

However, it's important to note that the warranty does not cover external damage caused by accidents, acts of God (such as natural disasters), or equipment damage caused by the user. These are considered external factors beyond our control. In such cases, repair or replacement would be the responsibility of the user.

We pride ourselves on the quality of our products and strive to provide excellent customer service. If you encounter any issues within the warranty period that fall within the covered aspects, please reach out to our customer support team, and we will promptly assist you in resolving the matter.



Our Presence

Delhi

296/2, Min West, Revenue Estate, Near Sultanpur Metro Station (Opposite Metro Pillar No SP 33), M.G. Road, New Delhi - 110030

Delhi

B-77, Ground Floor, Defence Colony, New Delhi - 110024

Karnataka

2nd Main Road, Sampige Road, 17th Cross, Malleshwaram, Bengaluru, Karnataka - 560003

Karnataka

2nd Cross, Garden Area, Shivamogga, Karnataka - 577201

Maharashtra

29L, Laxmi Industrial Estate, Suresh Nagar, Andheri (West), Mumbai - 53

Rajasthan

S-4, Adinath Nagar, Opp. Genpact, JLN Marg, Jaipur - 302017

Rajasthan

24/155, Swarn Path, Mansarovar, Jaipur, Rajasthan- 302020

Tamil Nadu

Habibullah Road, T Nagar, Chennai, Tamilnadu - 600017

Telangana

Road No. 36, Jubilee Hills, Hyderabad, Telangana - 500033

Punjab

Main Hambran Road, Opposite Anurag Eye Hospital Rishi Nagar, Ludhiana, Punjab-141004

