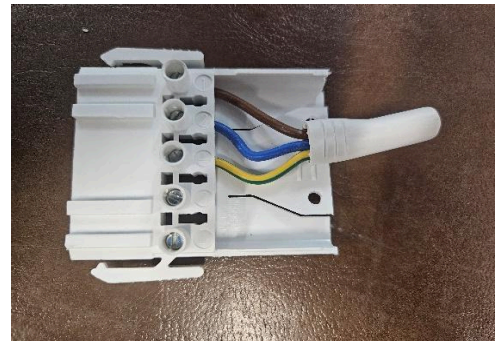
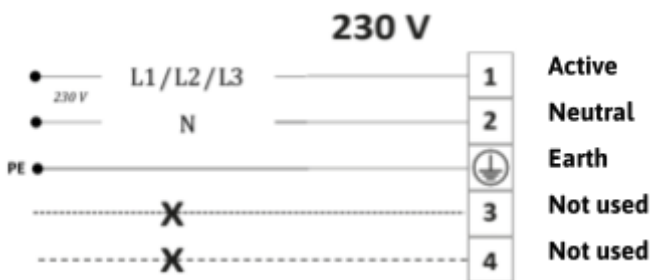


# Wall Box Wiring & Installation Notes

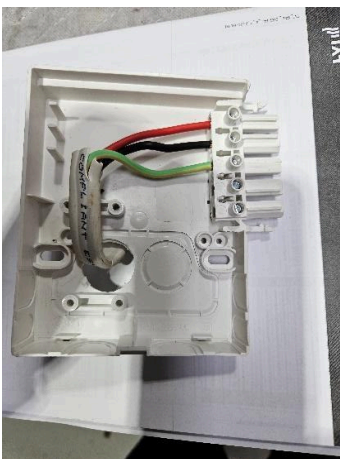
Please find enclosed the wall boxes designed for the installation of Purmo radiators. **Here are some installation tips for optimal setup:**

- Typically, install the wall boxes behind the radiator's designated position, usually centered but clear of any wall studs used for the heater's mounting brackets.
- Avoid placing the Ensto box too high in relation to the radiator's size.
- If the heater brackets are to be mounted on the skirting board, route the cable through the wall approximately 50mm above the skirting.
- Install the wall box with the plug terminals facing towards the right-hand side.
- Pay attention to the placement of the heater mounting bracket, ensuring there's ample room for the Ensto plug to be easily connected or disconnected when installed close to a bracket.
- The Ensto box can serve as a replacement for an existing powerpoint, as it will neatly cover the cut-out. You may need to drill new screw holes into the wall box to fit it properly.
- Given that the terminals are relatively small, it's advisable to route a single 2.5mm cable into the box for a clean installation.

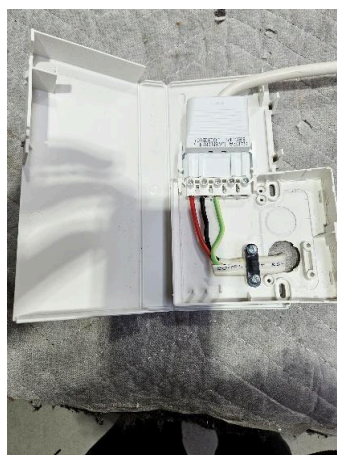
Should you have any questions or require further assistance, please don't hesitate to contact us at **1800 951 439** or via email at [info@thermosoftaustralia.com.au](mailto:info@thermosoftaustralia.com.au)



Ensto plug wiring



Wallbox wiring



Splash cover assembly



Splash cover complete