

Wall Box Wiring & Installation Notes

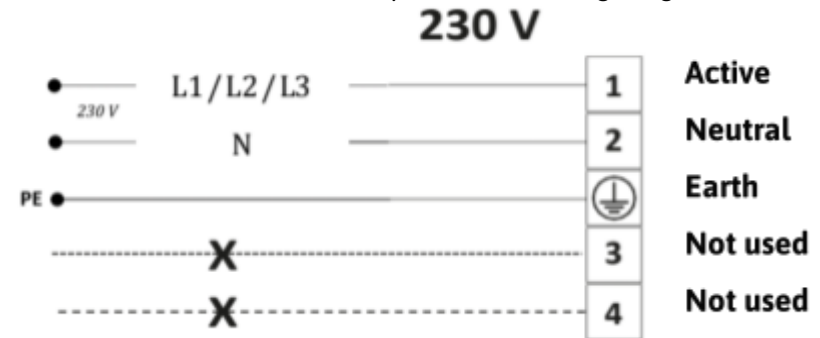
Please find enclosed wall boxes to suit the installation of the LVI radiators.

Installation tips:

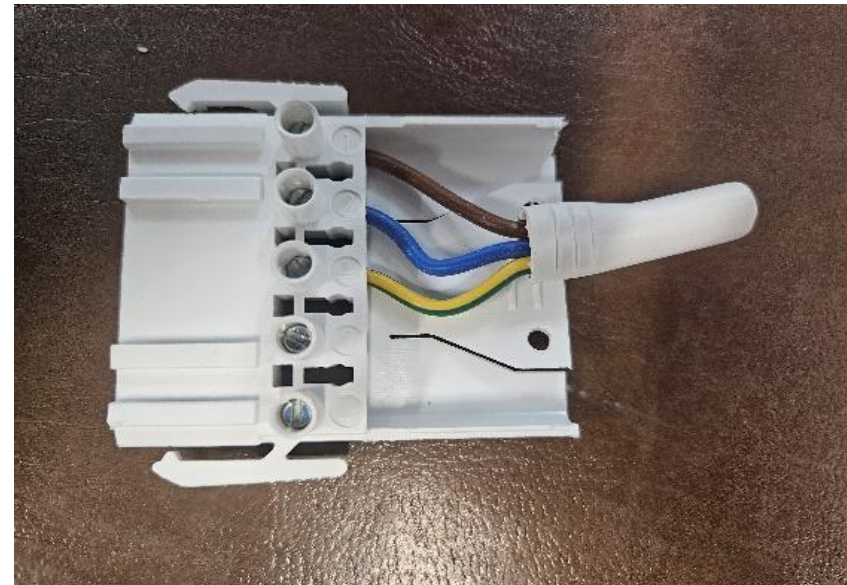
- Typical installation of these wall boxes is behind the radiator position, usually around the centre, but away from wall studs we might use for the heater mounting brackets.
- Don't position the Ensto box too high relative to the size of the radiator,
- If the heater brackets are going to sit on the skirting, then bring cable through the wall about 50mm above the skirting.
- Fit off wall box with plug terminals facing towards the right hand side
- Be aware of where you're positioning the heater mounting bracket. Leave enough room for the Ensto plug to be connected/disconnected when installed near a bracket
- The Ensto box can be used to replace an existing powerpoint, as it will cover the cut-out.
- As terminals are not large, it is best to try and bring a single 2.5mm cable through into the box.

If you have any questions, please call us on **1800 951 439** or email info@thermosoftaustralia.com.au

Terminals should be wired as per the following diagram:

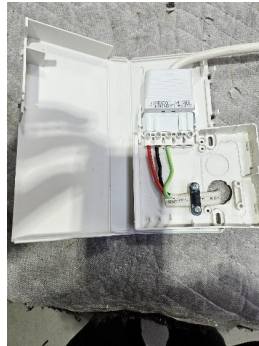
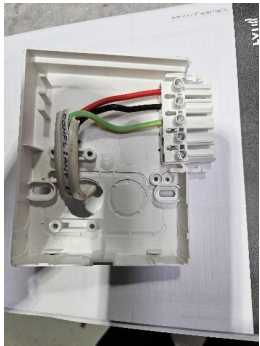


Plug Wiring



To maintain IP44 rating, Ensto connection box must be installed with an associated splash cover as shown below:

Hardwiring to Wallbox Assembly of Splash Cover



What's inside our Hardwiring Kit?

- Ensto Box IP44 Splash Cover
- Ensto Box KDN502
- Ensto Connector - Male Plug
- Wallbox install notes