



BIGBEN

PRODUCT DATA SHEET 09.23



SC-5500

SCAFFOLD LIGHT

DEFINING FEATURES

- 360 Degree polycarbonate lens
- Integrated photocell (Activated by darkness)
- Sealed against dust and water
- Flashing or continuous settings



BIGBEN

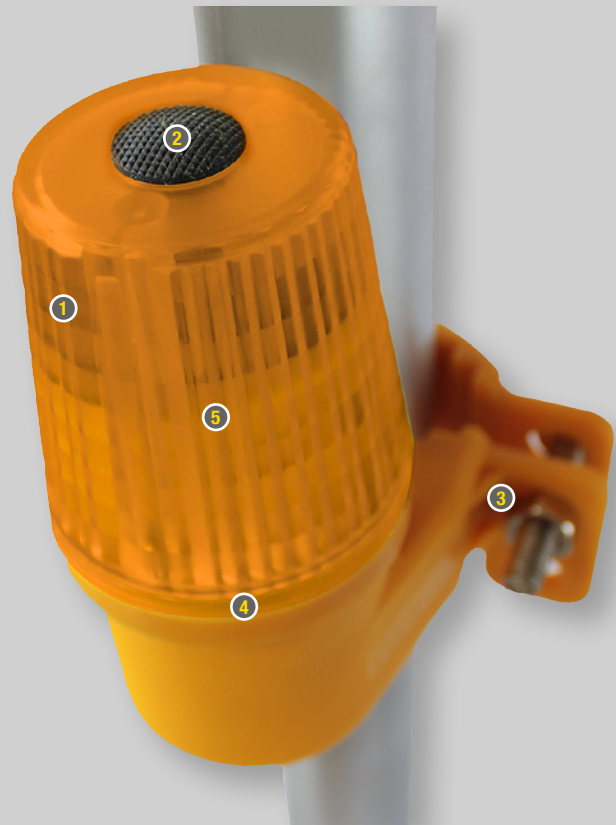
bigbensafety.com

TAKING SAFETY
TO NEW HEIGHTS

 **Swiss
Logo**
The Marque of Excellence

ADDITIONAL FEATURES

- 1 **Robust polycarbonate**
suitable for industrial applications.
- 2 **Alternate on/off switch**
flashing or continuous.
- 3 **Shaped mounting bracket**
with two hexagon security screws (tool provided).
- 4 **Sealed to protect against dust and water.**
- 5 **Integrated photocell**
(Activated by darkness).



ORDERING INFORMATION

PART NO	COLOUR	SIZE	UNIT WEIGHT	BATTERY LIFE	FLASH PATTERN	FLASH DURATION	CANDELA	ILLUMINATION TYPE
SC-5500H	Amber	120mm x 118mm x 95mm	365g	1500 Hours Flashing 750 Hours Steady	30 Per Minute, (single flash)	200 Milliseconds	0.8 Flashing / 0.95 Steady	LED x 2, yield of minimum 1100 mCd
SC-5500HR	Red							
SC-5500HW	White							

SECURITY KEY ORDER CODE

SC-5500KEY

SUITABLE INDUSTRIES



SCAFFOLDING



OIL & GAS



CONSTRUCTION



ROOFING



BRICKWORK



DEMOLITION



TRANSPORTATION



MAINTENANCE



RESCUE

BIGBEN

bigbensafety.com

TAKING SAFETY
TO NEW HEIGHTS

 Swiss
Logo
The Marque of Excellence